

Pittsburg State University

Pittsburg State University Digital Commons

The Kanza, 1910-2010

Yearbooks, 1910-2010

1951

The Kanza 1951

Kansas State Teachers College

Follow this and additional works at: <https://digitalcommons.pittstate.edu/kanza>

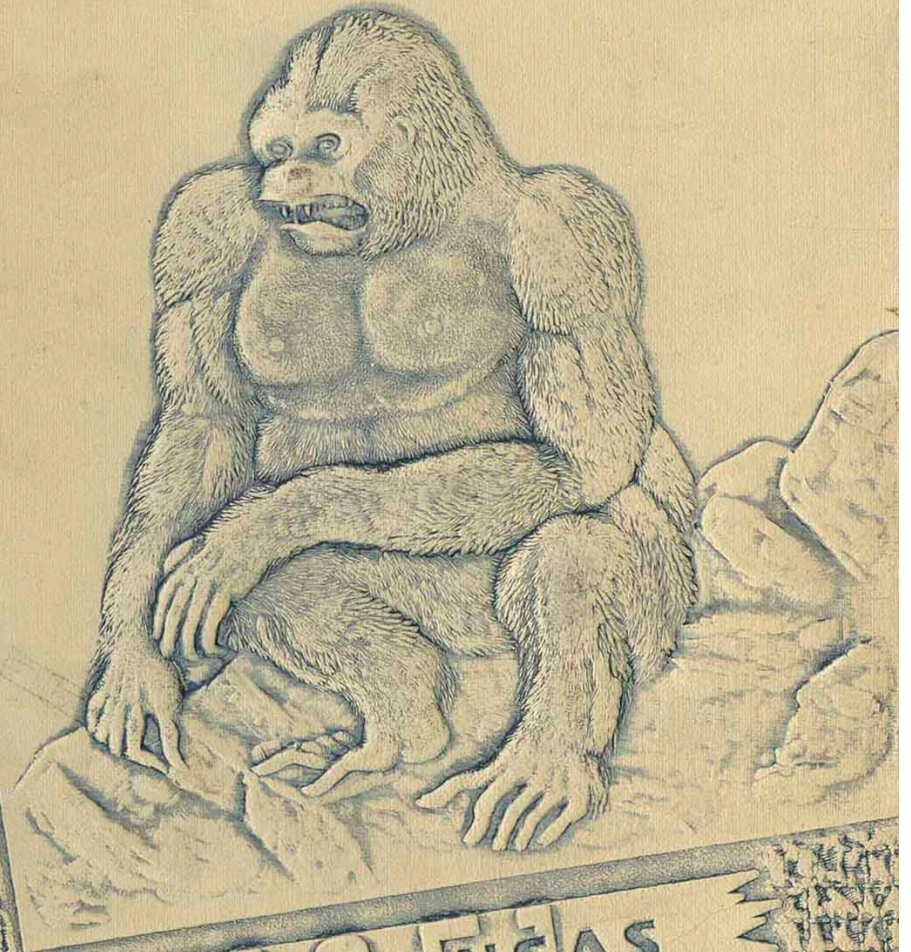
Recommended Citation

Kansas State Teachers College, "The Kanza 1951" (1951). *The Kanza, 1910-2010*. 8.
<https://digitalcommons.pittstate.edu/kanza/8>

This Book is brought to you for free and open access by the Yearbooks, 1910-2010 at Pittsburg State University Digital Commons. It has been accepted for inclusion in The Kanza, 1910-2010 by an authorized administrator of Pittsburg State University Digital Commons. For more information, please contact digitalcommons@pittstate.edu.

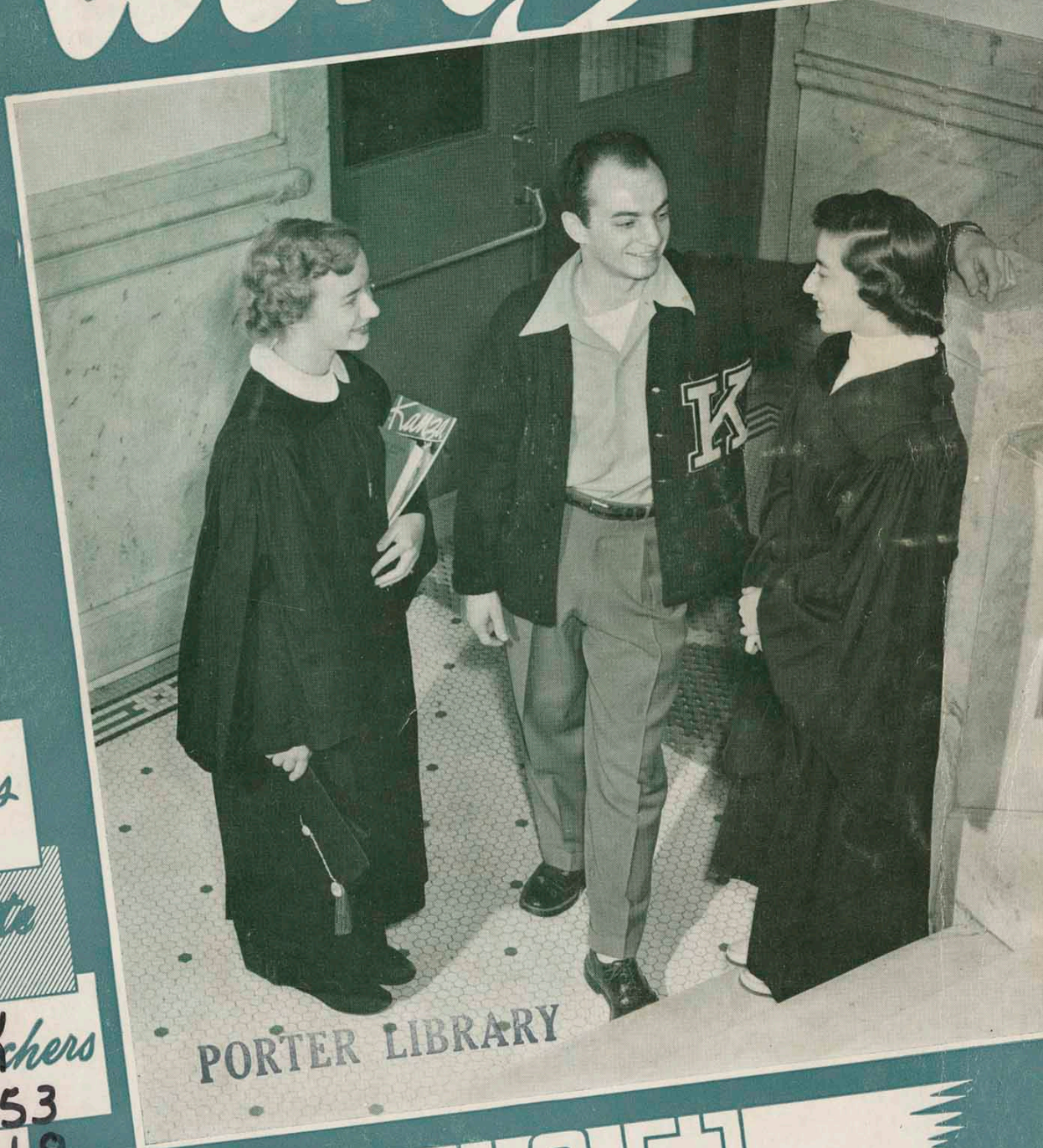
Kanada

Kansas
State
Teachers



PITTSBURG, KANSAS
1951

KAMBA



Kansas

State

Teachers

T 153

K 168

1951

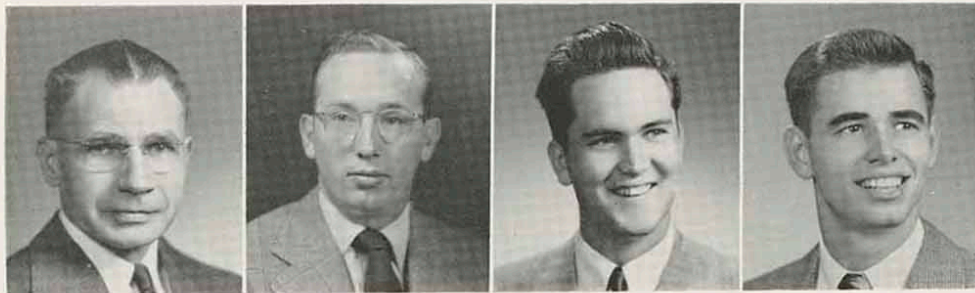
No. 3 Third Number

1951

*And, when the stream
Which overflowed the soul was passed away
A consciousness remained that it had left
Deposited upon the silent shore
Of memories, images and precious thoughts,
That shall not die, and cannot be destroyed.
--- Wordsworth*

PORTER LIBRARY

THE *Big* FOUR —Larry, Harry Bob, Ronnie



the EDITOR *says:*

It has become the custom that each year the editor write an editorial. In it he tells of the trials and hardships he and his staff have gone through to present the Kanza. I regret to report no increase in gray hairs—just thinner that's all. Seriously, putting the Kanza together has been fun. It was fun because we had the full co-operation and backing of everyone from President Hughes down to the frisky dogs on the Campus.

However, some should have special mention—Laurence Cutler, who furnished the answers to my many questions; my wife, Wyn, who lived with the Kanza day and night for a year;

Ralph Kolb of Burger-Baird, for his suggestions and help on the art work; Bob Cox, for doubling as assistant editor and photographer; Adele Mehl Burnett, for her assistance in preparing copy for the printers; Charles Caywood and Emajeane Boone, for taking over the worries of the Kanza Ball; A. P. O. for assistance at the Ball; and my son, Mike, who gave up "playin' with dad" for three months so that we could get the Kanza out.

To my staff and everyone at the College, thanks.

Larry Spurgeon



BOARD OF PUBLICATIONS

Aaron C. Butler (chairman), Eva Pitzer, Beverly Bates, Adele Mehl Burnett, Robert Longstaff, Keitha Bohlander, Mark Plummer, Jo Ann Sell, Richard Kornis, Laurence Cutler, Max Minor. Not present—Leroy Brewington, Dudley T. Cornish, Clay DeFord, Mitzi Donaldson, Mitzi Helm, Belle Provorse, Ernest Stonecipher.

The KANZA



The STAFF

Jo Ann Barr, Vivian Coletti, Aaron Butler, Benny Coletti, Greta Mae Brown, Mona Markham, Loren Phelps, Emajeane Boone, Charles Caywood, Marjorie Wheatley. Standing—Ronnie Roderique, business manager, Larry Spurgeon, editor, L. G. Cutler, sponsor. Members of the staff not present—Barbara Weaver, Dawn Tedlock, Bob Cox, assistant editor (see pages 24, 15, and 18 respectively in second issue), and Beverly Bates (page 8, third issue).

CONTENTS

V. I. P.'s, 6; Listening Posts, 23; Telephone Numbers, 25; Queens of Beauty, 44; Apple Day, 50; The Big Moment, 51; Unrehearsed, 52; The Loop, 54; Melting Pot, 55.

Our COVER

At the foot of the marble stairs—Frances Seckman, Bob Berman, Deanie Wilson.

SENIOR *Class Officers*

President - William (Bill) Jay Brumbaugh

I was born August 21, 1930, at Pittsburg, Kansas. I enjoyed college and participated in many activities. Much of my college life can be summed up in a listing of my activities during my senior year. These would include: Senior Class president, Student Council vice-president, Inter-Fraternity Council vice-president, Sigma Tau Gamma pledge pop, and an intramural basketball team captain. I was a member of Pi Omega Pi, Kappa Delta Pi, Kappa Mu Epsilon, Pep Club, Collegiate Republican Club, Varsity Tennis Team, Who's Who in American Universities and Colleges, Roger Williams Fellowship, and YMCA. I have been a busy man.

Vice-President - Barbara J. Ensman

I entered K. S. T. C. in 1944 when I was serving as a student nurse at Mt. Carmel Hospital. At that time I enrolled in science courses recommended for student nurses. Upon becoming a registered nurse in 1947, I returned to K. S. T. C. to obtain a B. S. degree in Education. I majored in Biology, with minors in English and Social Science. My college years have been busy ones, for in addition to my studies I have served as Clinical Instructor at Mt. Carmel Hospital of Nursing. While on the campus, I have been a member of Sigma Sigma Sigma sorority and was secretary-treasurer of Pan-Hellenic during my junior year. I have been a member of the Biology Club and the Newman Club.

Secretary - Marilyn Mosier

Although I'm a native Kansan and claim Pittsburg as my home town, I'm a wanderer at heart. I love to travel and meet people. Nothing is more fun for me than to meet people and try to figure out by their accents what section of the country they hail from. My college work has been directed toward a pre-professional degree in social welfare—and upon my graduation, I'll receive the first such degree that K. S. T. C. ever issued.

As to my travels thus far, the section of the country that has intrigued me most has been the East Coast. I like the city life of the Easterners with all the advantages and disadvantages. I like their country for its historic background and the ocean for its fishing, swimming and beach parties. It is my hope to go East for some type of welfare work for a while; then maybe I'll go on for graduate work in the field before I come back to my Sunflower State.

Treasurer - Margaret Ann Tinder

One doesn't realize how attached he becomes to people and buildings until the time comes for him to leave. That's how it is with me. College has been fun; especially have I enjoyed the work I have done in the Commerce department. I have been "active" in college affairs, and have enjoyed my associates in the groups to which I belong—both social and professional.

College life is an experience I will never forget. It involved study, work, fun, heartaches, and a sense of accomplishment. But when it is all added up, it is worth the trouble to get a college degree. Now I look forward to teaching high school people in the business field.



Marilyn, Barbara, Margaret and Bill

Mary Ann Abbey
Baxter Springs, Kansas
Education

Gloria Adair
Kansas City, Kansas
Commercial Education



Charles R. Adams
Hume, Missouri
Education

Billy D. Agnew
Pittsburg, Kansas
Business Admin.



Bobbie W. Albers
Pittsburg, Kansas
Industrial Arts

Maxine Alden
McCune, Kansas
Music



William Allen
Balboa, Canal Zone
Music

Nancy Anderson
Pittsburg, Kansas
Education



Samuel T. Anderson
Eldorado Springs
Lang. and Lit.

Kenneth Baden
Independence, Kansas
Accounting



Ruby K. Bailey
Lamar, Missouri
Elementary Education

Gordon Bannister
Coffeyville, Kansas
Biology



Robert Barbero
Pittsburg, Kansas
Drafting

Jack N. Barker
Pittsburg, Kansas
Education



V.I.P.

V.I.P.



Shirley Barker
Pittsburg, Kansas
Social Welfare



Leroy A. Bash
Galena, Kansas
Mathematics



Arlene Bates
Ft. Scott, Kansas
English



Beverly Bates
Kansas City
Lang. and Lit.



Ruth Bauersfeld
Fredonia, Kansas
Elementary Education



Nan Beck
Erie, Kansas
Social Science



William L. Beck
Chanute, Kansas
Industrial Arts



Richard Bennett
Girard, Kansas
Physical Education



Roy S. Bennett, Jr.
Parsons, Kansas
Business Administration



Leon E. Benson
Chanute, Kansas
Mathematics



Roger Bezinque
Pittsburg, Kansas
Physical Education



Robert Birdwell
Pittsburg, Kansas
Mathematics



C. Richard Blancett
Pittsburg, Kansas
Mathematics



Remel Blundell
Pittsburg, Kansas
Physical Education

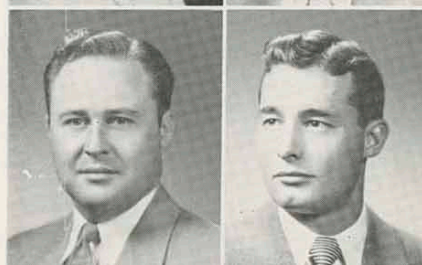
Keitha Bohlander
Walnut, Kansas
Social Science

Royal W. Boone
Neal, Kansas
Printing



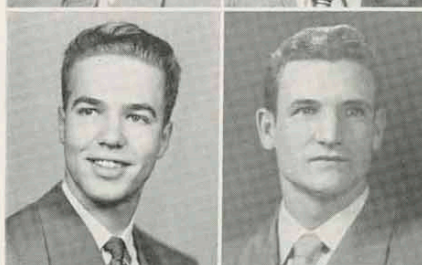
Ervin W. Brant
Winfield, Kansas
Industrial Arts

Harold L. Brown
McCune, Kansas
Lang. and Lit.



William Brumbaugh
Pittsburg, Kansas
Mathematics

Donald L. Bruyr
Columbus, Kansas
Mathematics



Cecil R. Butler
Pittsburg, Kansas
Printing

Beverly Cantrell
Neosho, Missouri
Elementary Education



Margy Carlson
Pittsburg, Kansas
Commerce

Donald Clark
Pittsburg, Kansas
Physical Education



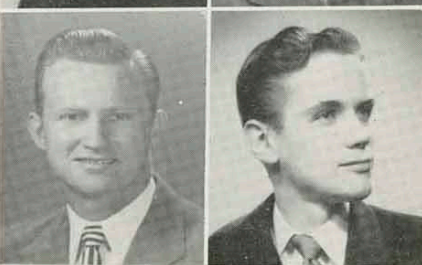
Laura A. Clark
Parsons, Kansas
Business Education

Robert B. Clark
Galena, Kansas
Business Education



William J. Clark
Joplin, Missouri
Physical Education

Glenn Clugston
Pittsburg, Kansas
Piano



V.I.P.

V.I.P.



Leon R. Cole
Cherryvale, Kansas
Social Science



Benny S. Colette, Jr.
Pittsburg, Kansas
Physical Education



Robert Colson
Carthage, Missouri
Marketing



H. Edgar Cornell
Battle Creek, Michigan
Industrial Arts



Floyd Cortner
Osawatomie, Kansas
Physical Education



Beverly Craven
Iola, Kansas
Art



Wayne Craven
Colony, Kansas
Industrial Arts



Merle D. Creed
Pittsburg, Kansas
Industrial Arts



Louis T. Crowe, Jr.
Pittsburg, Kansas
Social Science



Kent Cunningham
Pittsburg, Kansas
Social Science



Lillian Curry
Prescott, Kansas
Lang. and Lit.



Louise Curry
Prescott, Kansas
Lang. and Lit.



Wilma M. Dains
Oswego, Kansas
Elementary Education



Donald L. Daniels
Kansas City, Missouri
Business Administration

Benjamin J. Davis
Fort Scott, Kansas
Physical Education

Cathren Davis
Lamar, Missouri
Elementary Education



Eleanor M. Davison
Pittsburg, Kansas
Secretarial

Rita A. Diskin
Walnut, Kansas
Sect.-Commerce



Charlotte Douglas
Joplin, Missouri
Elementary Education

William Dowling
Walnut, Kansas
Social Science



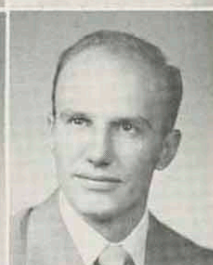
Harvey M. Drake
Pittsburg, Kansas
Physical Education

Elaine M. Duarte
Habalouw, Hawaii
Elementary Education



Lloyd L. Duncan
Pittsburg, Kansas
Elem. Educ. and Adm.

George Dunleavy
Gary, Indiana
Physical Education



Mona Louise Eliff
Pittsburg, Kansas
Art

Barbara J. Ensman
Pittsburg, Kansas
Biology



Pat Epperson
Pittsburg, Kansas
Lang. and Lit.

Pete A. Esch
Pittsburg, Kansas
Business Administration



V.I.P.

V.I.P.



Roberta Evans
Pittsburg, Kansas
Elementary Education



Myron D. Fansler
Garden City, Kansas
Mechanical Arts



Dale S. Felty
Liberal, Missouri
Biology



Eva Belle Fine
Kansas City, Kansas
Elementary Education



Frederick L. Fine
Pittsburg, Kansas
Chemistry



Mary Jo Forsyth
Pleasanton, Kansas
Commerce Education



Elmer Frazell
Iola, Kansas
Social Science



Wendell Frazell
Iola, Kansas
Physical Education



Muriel Frisbie
Pittsburg, Kansas
Lang. and Lit.



Joye Fromong
Weir, Kansas
Music



Clyde E. Gilbert
Pittsburg, Kansas
Industrial Arts



Robert M. Glynn
Wildee, Kansas
Physical Education



William Godina
Arma, Kansas
Business Administration



Ted N. Gould
Pittsburg, Kansas
Industrial Arts

Destia Gray
Pittsburg, Kansas
Physical Education

Lee Roy Gray
Richmond, Missouri
Industrial Arts

James F. Haeffling
Kansas City, Missouri
Chemistry

Kathleen Hager
Erie, Kansas
Commerce

Adah F. Hale
Columbus, Kansas
Education

Charles Hale, Jr.
Wichita, Kansas
Industrial Arts

Jean Halpain
Parsons, Kansas
Chemistry

Alfred C. Hanes
Ft. Scott, Kansas
Social Science

William D. Harman
Garden City, Kansas
Physical Science

William W. Harriss
Fort Smith, Arkansas
Industrial Arts

Ray J. Heatherly
Frontenac, Kansas
Biology

Kelley Hedges
Pittsburg, Kansas
Commerce

Charles H. Higgins
Joplin, Missouri
Biology

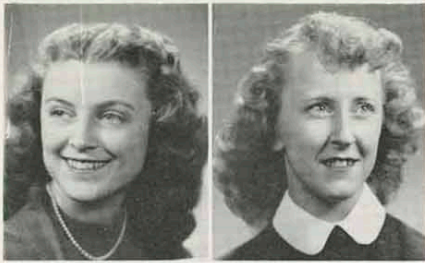
Marion D. Huffman
Pittsburg, Kansas
Social Science



PORTER LIBRARY

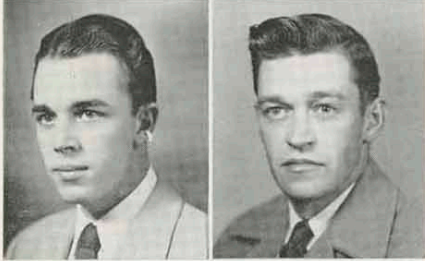
V.I.P.

V.I.P.



Louise Hughes
Galesburg, Kansas
Music

Martha Huston
Parsons, Kansas
Social Science



Robert Jackson
Coffeyville, Kansas
Industrial Arts

Alfred A. Johnson
Pittsburg, Kansas
Auto Mechanics



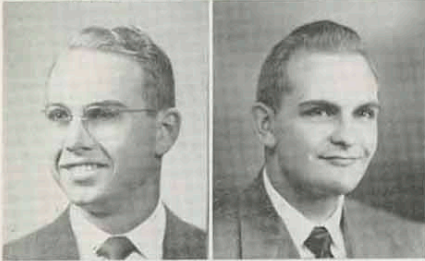
Donald Johnson
Pittsburg, Kansas
Industrial Arts

Henry J. Jones
Kansas City
Industrial Arts



Rosemary Keenan
Baxter Springs, Kansas
Speech

H. L. (Dusty) Kirk
McCune, Kansas
Business Administration



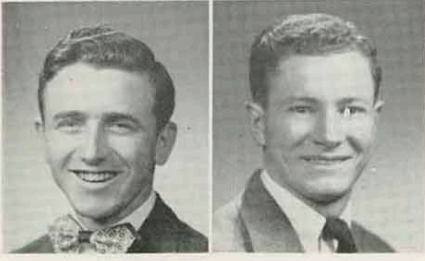
Lewis Kollhoff
Hutchinson, Kansas
Industrial Arts

Stanley Lambdin
Caney, Kansas
Secretarial



Clifford Lee
Pittsburg, Kansas
Accounting

August Lefebvre
Pittsburg, Kansas
Industrial Arts



Damon C. Lloyd
Spring Hill, Kansas
Industrial Arts

John Lock
Pittsburg, Kansas
Biology

William A. Long
Edna, Kansas
Physical Education

Clair O. Lovelace
Carthage, Missouri
Industrial Arts

Richard McCanse
Baldwin, Kansas
Industrial Arts

Kathaleen McClanahan
Jasper, Missouri
Home Economics

James E. McFarland
Girard, Kansas
Physical Education

Robert Mach
Greentown, New York
Industrial Arts

Don Macheers
Pittsburg, Kansas
Industrial Arts

Donald E. Madl
Kansas City, Missouri
Lang. and Lit.

Leonard Mamie
Turner, Kansas
Physical Education

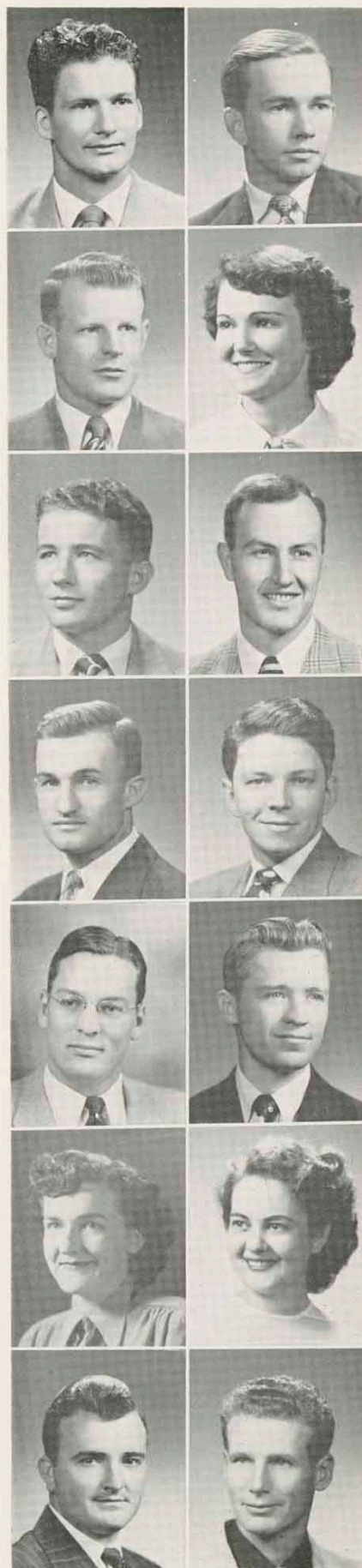
Don K. Marlow
Minden, Missouri
Music

Marie Marti
Lamar, Missouri
Elementary Education

Ethel Martin
Pittsburg, Kansas
Business

Max Martin
Baxter Springs, Kansas
Business Administration

Chester Mason
Pittsburg, Kansas
Industrial Arts



V. I. P.

V.I.P.



Patrick Massman
Pittsburg, Kansas
Physics



Kenneth Mendenhall
Paola, Kansas
Industrial Arts



George W. Miller
Topeka, Kansas
Industrial Arts



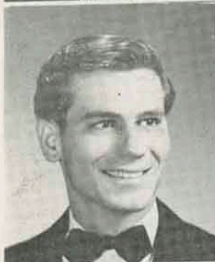
William H. Miller
Fredonia, Kansas
Lang. and Lit.



Max L. Minor
Mulberry, Kansas
Social Science



William W. Mitchell
Pittsburg, Kansas
Business Administration



Norman D. Montgomery
Pittsburg, Kansas
Metalwork



Marilyn Mosier
Pittsburg, Kansas
Psychology



Elaine Mulliken
Columbus, Kansas
Home Economics



Robert E. Murphy
Joplin, Missouri
Metalwork



Robert E. Nighswonger
Fulton, Illinois
Commerce



Denzel W. Niswonger
Pittsburg, Kansas
Business



Keith Noll
Hutchinson, Kansas
Lang. and Lit.



William F. O'Brien, Jr.
St. Paul, Kansas
Mathematics

Robert O'Reilly
Girard, Kansas
Lang. and Lit.

Donald Overman
Pittsburg, Kansas
Business Administration

Loren L. Palmer
Pittsburg, Kansas
Industrial Arts

Patricia Parmenter
Pittsburg, Kansas
Home Economics

Welby G. Parson
Kansas City, Kansas
Business Admin.

Merle J. Parsons
Pittsburg, Kansas
Industrial Arts

Verle K. Parsons
Pittsburg, Kansas
Drafting

Bob P. Patrick
Pittsburg, Kansas
Physical Education

Manco W. Peek
South Haven, Kansas
Industrial Arts

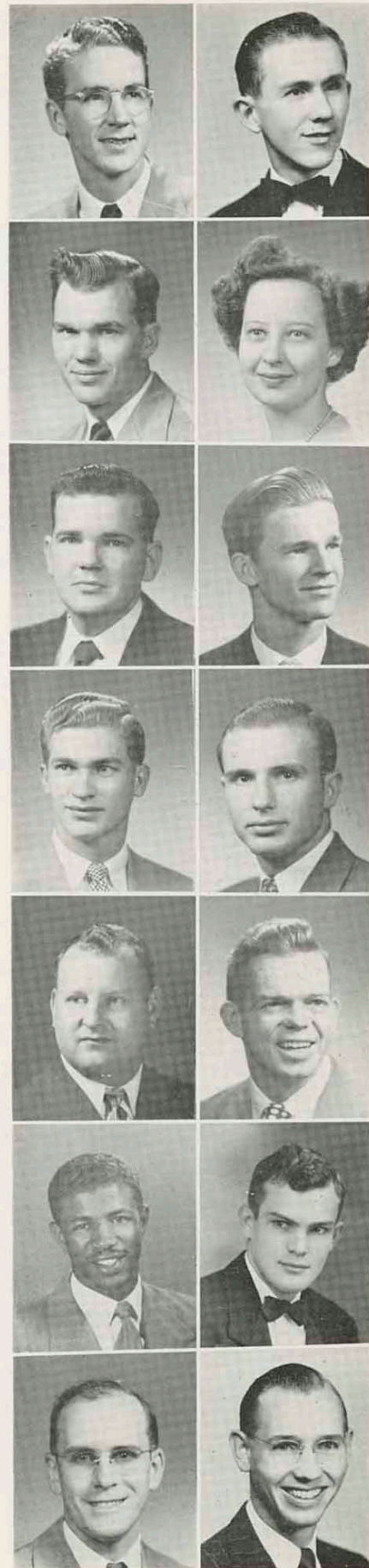
Mark Plummer
Seneca, Missouri
Social Science

Frank Powell
Kansas City, Kansas
Biology

George T. Quier
Pittsburg, Kansas
Industrial Arts

Calvin C. Ramsey
Parsons, Kansas
Printing

Charles Rasmussen
Pittsburg, Kansas
Industrial Arts



V.I.P.

V.I.P.



Rose Mary Reagan
Columbus, Kansas
Home Economics



Mary Jean Regan
Parsons, Kansas
Commerce



Earl A. Rich
Oxford, Kansas
Industrial Arts



Dana Jane Richmond
Parsons, Kansas
Music Education



Ivan R. Riley
Galena, Kansas
Chemistry



Mary E. Robinson
Kansas City, Missouri
Biology



Stanley H. Roberson
Emporia, Kansas
Education



Delores D. Ross
Pittsburg, Kansas
Elementary Education



Turner Rouse
Pittsburg, Kansas
Lang. and Lit.



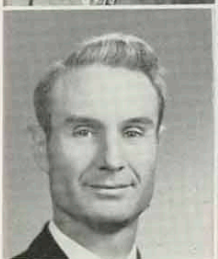
Joe R. Sample
Erie, Kansas
Elementary Education



George Saunders
Pleasanton, Kansas
Industrial Arts



Robert Scalet
Pittsburg, Kansas
Social Science



Walter Schenkosky
Pittsburg, Kansas
Industrial Arts



Arden Schoenig
Pittsburg, Kansas
Industrial Arts

Frances Seckman
Baxter Springs, Kansas
Elementary Education

Donald C. Sesso
Vinita, Oklahoma
Physical Science

Milo M. Sharp
Woodland Park, Colorado
Music

Stephen Shawger
Parsons, Kansas
Business Administration

Wayne Shireman
Walnut, Kansas
Elementary Education

Carlos S. Simion
Pittsburg, Kansas
Physics

Marvin Simpson
Troy, Kansas
Social Science

Earl R. Slapar
McCune, Kansas
Business Administration

Frank M. Slapar
McCune, Kansas
Metalwork

Carol June Smith
Pittsburg, Kansas
Physical Education

Harry L. Spurgeon
Parsons, Kansas
Social Science

Carl J. Stacy
Pittsburg, Kansas
Chemistry

Robert Stahl
Junction City, Kansas
Industrial Arts

Louise Stansel
Hutchinson, Kansas
Home Economics



V.I.P.

V.I.P.



Frances Stephan
Bronaugh, Missouri
Education



Lela Mae Sterling
Ft. Scott, Kansas
Elementary Education



Almeda Stevenson
Mound Valley, Kansas
Home Economics



William B. Stewart, Jr.
Hot Springs, Arkansas
Biology



Niles Stockinger
Arma, Kansas
Biology



Tommy Stockwell
Pittsburg, Kansas
Pre-law



Henry Stovall
Mulberry, Kansas
Industrial Arts



Richard Stratton
Parsons, Kansas
Physical Education



Fred L. Stumbo
Pittsburg, Kansas
Industrial Arts



Robert Sybert
Pittsburg, Kansas
Social Science



Pearl D. Taffner
Lamar, Missouri
Education



Billye J. Talmadge
Bethany, Oklahoma
English



Lawrence Tarbell
Fitchburg, Mass.
Lang. and Lit.



Jack W. Thomas
Pittsburg, Kansas
Psychology

Margaret Tinder
Pittsburg, Kansas
Commerce

Dorothy Tittle
Rosedale, Kansas
Elementary Education

Beatrice Tompkins
Kansas City, Kansas
Mathematics

Rosella Towson
Carthage, Missouri
Physical Education

John Turlip
Frontenac, Kansas
Biology

Leo Utt
Arkansas City, Kansas
Mathematics

Grafton Vanderford
Pittsburg, Kansas
Industrial Arts

Joe M. Walker
Baxter Springs, Kansas
Chemistry

Harold Wallace
Galena, Kansas
Physical Education

Charles S. Warren
Pittsburg, Kansas
History

Lordine Warren
Kansas City, Kansas
Elementary Education

Clyde West
Iola, Kansas
Sec. Educ. and Admin.

Marjorie Wheatley
West Plains, Missouri
English

Alva L. Whitney
Pittsburg, Kansas
Physical Education



V.I.P.

V.I.P.



Jane M. Williams
Riverton, Kansas
Speech



Kenneth Williams
Galena, Kansas
Industrial Arts



Paul Williams
Commerce, Oklahoma
Physical Education



Paul M. Willis
Independence, Kansas
Biology



Deanie Wilson
St. Louis, Missouri
Physical Education



Max V. Wilson
Pittsburg, Kansas
Physical Education



Billy D. Windsor
Wichita, Kansas
Auto Mechanics



Richard Woodall
Pittsburg, Kansas
Physical Education



Martha York
Osawatomie, Kansas
Home Economics



Elsie Zimmerman
Columbus, Kansas
Education

Listening

Posts



Wilber Holland and Ted Huffman take a break in their studies.

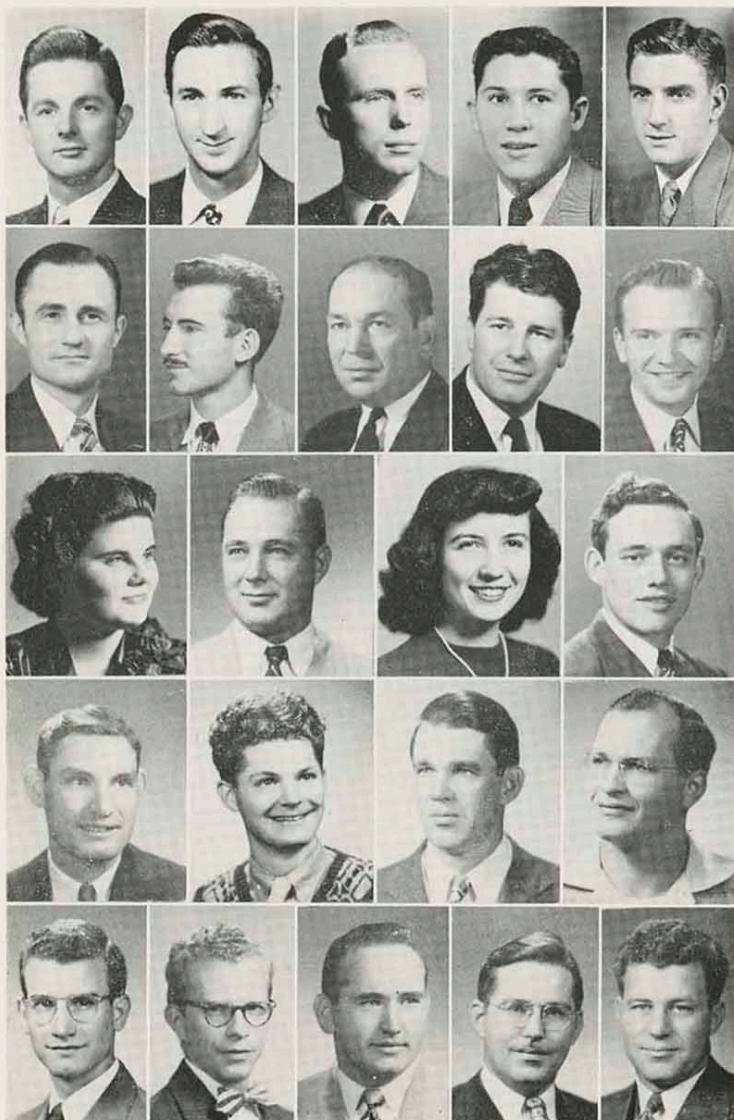
PORTER LIBRARY

- The last and final great hurdle.

Well on the road to becoming experts in their field.

Freshmen mistake them for faculty members.

Many list as their home address—Porter Library.



Theodore Huffman
 Morris Grotheer
 Merlin Staatz
 Melvin Rising
 Floyd Belk

Nolan Cloud
 Robert Pinkerton
 Edwin Pepper
 Firman E. Mall
 William Fish

Mavis Brewington
 Eugene Spangler
 Maxine Fish
 Richard Johnson

Cecil R. Brown
 Max Pickerill
 Chester Grimm
 Charles Burner

Charles Corporon
 William Peaslee
 James Modlin
 Herbert LeVan
 Earl Brooker

OPERATOR *give me...*





Phi Sigma Epsilon



Seated—Floyd Belk, vice president;
George Saunders, president; George
Miller, secretary-treasurer.

Standing—Leon Benson, correspond-
ing secretary; Leo Utt, sentinel, Bob
Jackson and George McKinney, pledge
pops.

Beta Chapter of Phi Sigma Epsilon was organized at K. S. T. C. in 1927, and had an original membership of fifteen. The first meeting of the chapter was held in the former President Brandenburg's home. The chapter now holds its regular Tuesday night meetings at 1718 South Broadway.

At the present time nearly all the curricula of the college are represented in the membership of Phi Sigma Epsilon. Beta Chapter has always encouraged higher scholarship of its members, and has cooperated with faculty and administration by entering into all school activities wholeheartedly.

Beta Chapter now has forty-two active members. Bert Kenney and Charles Minelli are faculty sponsors.



Kenneth Baden
Floyd Belk
Leon Benson
Tom Bellwoar
Joe Connor
Herb Cruickshank

Roger Curran
Richard Duding
Frank Edwards
Pete Esch
Glenn Fialka
Jim Gilmore

Ted Gould
Joseph Hodnik
Bob Jackson
Delbert Jenkins
August Junge, Jr.
Stanley Lambdin

Paul McBeath
Robert Mach
Firman Mall
Walter Meyer
George Miller
William Miller

William Mosse
Robert Murphy
Alfred Ortolani, Jr.
Melvin Osbourn
Melvin Rising
Bill Rottler

Joe Sample
George Saunders
Stephen Shawger
Robert Smith
Tommy Stockwell
George Stroud

Larry Tarbell
Leo Utt
Robert Volk
William Ward
Rex Whitaker
Wesley Williams



Mary Ann Abbey
Virginia Adams
Elaine Allison
Nancy Anderson
Sara A. Archibald
Charlaine Armstrong
Helen M. Bailey

Shirley Barker
Jo Ann Barr
Jeannine Brooks
Mary L. Canny
Betty A. Cole
Jackie Colson
Dorothy A. Cresap

Pat Epperson
Roberta Evans
Sue Grant
Millicent Helms
Virginia Hindman-
Perrine
Norma Holland
Martha Huston

Mitzi Jost
Martha Lasley
Annie C. Lindsay
Beverly McClintic
Ruth Maninger
Claire Marsh
Margaret Marsh

Joan Mosier
Dollie D. Murty
Marjorie Pflug
Beth Phillips
Jonnie R. Polston
Marilyn Prather
Katherine Rae

Mary J. Regan
Janice Rice
Clara Jane Robb
Sylvia Silvia
Marianne Smardo
Bonita Stuckey
Phyllis Stutsman

Virginia Sullivan
Margaret Tinder
Dorothy Tustin
Janette Walker
Janie Williams
Norma Wilson
Molly Jo Woods

Lois Curless

Norma Johnston

Dolores Mingori

Ann Ransom

Alpha Sigma Alpha



Left to right. Ruth Maninger, vice-president; Marianne Smardo, editor; Jo Ann Barr, secretary; Roberta Evans, president; Norma Johnson, chaplain; Sue Grant, registrar; Margaret Tinder, treasurer.



Alpha Sigma Alpha, a national social sorority holding membership in the National Panhellenic Conference, was founded November 15, 1901, at Farmville, Virginia. Eta Eta chapter was organized in Pittsburg, July 9, 1920.

The aim of the sorority is to establish a sisterhood for encouraging the spiritual, intellectual, social and physical development of its members.

Again, this year, Alphas have been out in front in many of the campus organizations and happenings. Three Alphas were elected to Who's Who—Roberta Evans, Nancy Anderson, and Ruth Maninger. Nancy Anderson was presented the Roseberry Award by the Alumnae of Eta Eta chapter. Jo Ann Barr, an Alpha Candidate, was chosen as attendant to the Homecoming queen.

Offices the Alphas hold are: President of the Women's Recreational Association, secretary and treasurer of the Future Teachers of America,

president of the Press Club, and all four offices of the Newman Club.

Alphas also hold memberships in Kappa Pi, Panhellenic Council, Home Economics Club, Education Club, Social Science Club, Physical Education Major Club, Roger Williams Fellowship, Student Union Committee, Pi Delta Kappa, Delta Psi Kappa, College Band, and the Collegio staff.

Annually Alpha Sigma Alpha presents the Christmas assembly. This year the presentation was, "Twas the Night Before Christmas."

Advisors for Eta chapter are Dr. Jane Carroll and Mrs. Perva Hughes. Sponsors are Miss Eulalia Roseberry and Mr. and Mrs. G. W. Weede. Patronesses are Mrs. W. A. Brandenburg, Mrs. C. O. Davis, Mrs. C. F. Spencer, Mrs. C. Y. Thomas, Mrs. H. J. Veatch, Mrs. Clay DeFord, Mrs. Robert Lemon, Mrs. Ernest Mahan, and Mrs. W. L. Merwin. Mrs. Noel Dieu is the sorority housemother.



Sigma Tau Gamma

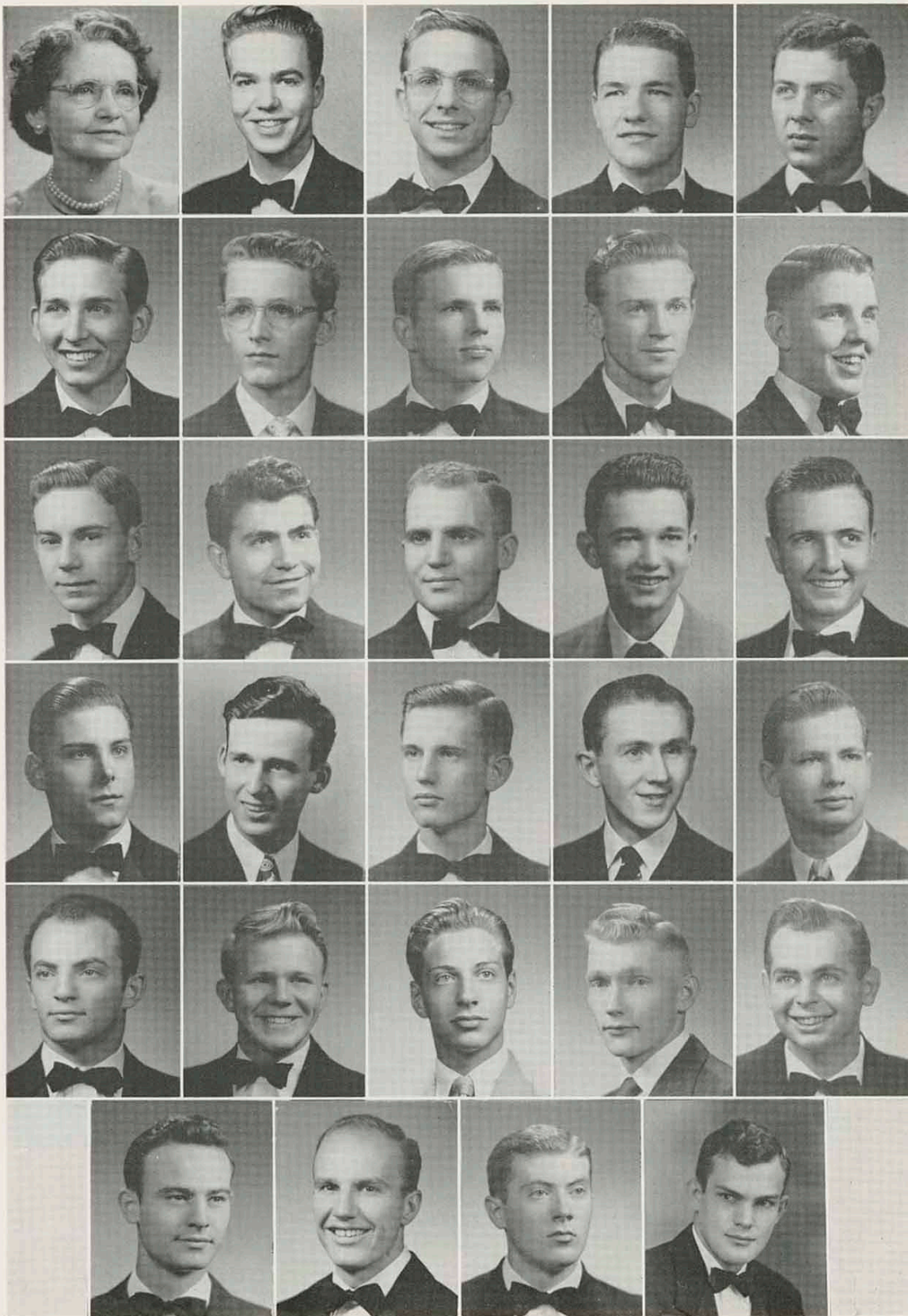


Roy Bennett, treasurer; Loren Phelps, president; William Brumbaugh, pledge pop; Roger Bezinque, sergeant-at-arms; John Frame, corresponding secretary; Richard Slinkman, secretary.

Sigma Tau Gamma fraternity was founded at Warrensburg, Missouri, in 1920. The local Epsilon chapter was organized in 1923. 1951 marked a milestone in Sigma Tau Gamma history when it became the first Teachers College Fraternity to be admitted as a member of the National Inter-Fraternity Conference.

The local chapter sponsors dances and other social events throughout the year. The chapter has been active in athletics and many other extracurricular activities. Epsilon chapter was awarded first prize for its float at the homecoming celebration.

Prof. Clay DeFord, Prof. Richard Korns, and Prof. O. F. Grubbs are sponsors of the local chapter. Mrs. C. F. Lucand is the fraternity housemother.



Mrs. C. F. Lucand
Robert Barbero
Charles Bavuso
Roy Bennett, Jr.
Bob Berman

Roger Bezinque

Bill Brumbaugh
Allan Bryant
Arnold Cisneros
Richard Dale
Ronald Damrill

George Dunleavy

Jim Ellisor
W. L. Ellisor
Jim Hamilton
Glen Hastings
John Herod

Sammy Heryford

Jim Kirchner
James McClendon
Howard McKee
Don Overman
Loren Phelps

George Quier

Donald Sesso
Richard Slinkman
Don E. Smith
Bud Utley
Charles Warren



Maxine Alden
Donna Alderman
Greta Mae Brown
Beverly Cantrell
Margy Carlson

Betty Jo DeLappe
Carole Didier
Rita Diskin
Martha Donaldson
Barbara Ensman

Rose Lee Fliss
Joye Fromong
Lenore Hamm
Mona Markham
Ethel D. Martin

Mariana Millsom
Catherine Modlin
Phyllis Nelson
Jalie Lee Paris
Ann Reeves

Delores Ross
Mary H. Sprenger
Rosella Towson
Dorothy Wolfe
Dorothy Wolkar

Sigma Sigma Sigma



Mitzi Donaldson, keeper of grades; Beverly Cantrell, vice-president; Catherine Modlin, recording secretary; Rose Fliss, corresponding secretary; Margy Carlson, president; Rosella Towson, treasurer.



Sigma Sigma Sigma, a national sorority and a member of the National Panhellenic Conference, was founded at the Virginia State Normal at Farmville, Virginia, on April 20, 1898, for the purpose of establishing a bond of lasting friendship and upholding the ideals of scholarship and ethical character. Chi chapter was founded in 1922.

Miss Betty Bennett, librarian, and Mrs. William Agnew, Women's Physical Education department, are faculty sponsors. Mrs. E. P. Van Horn is the housemother.

Patrons are Dr. and Mrs. J. Ralph Wells, Prof. and Mrs. D. D. Moore, Mr. and Mrs. John

Fenimore, Mr. and Mrs. Frank H. Freeto, Mr. and Mrs. Gordon Angwin, and Mr. and Mrs. Maynard Angwin.

Sigma Sigma Sigma placed second in the local Panhellenic scholarship award in the fall semester of 1950. Margy Carlson and Joye Fromong were selected for *Who's Who*. The Tri-Sig queen car placed second at Homecoming. Dorothy Wolkar, sponsored by the Industrial Arts Club, was selected as first attendant to the queen at the Kanza Ball. Ruth Schowengerdt and Helen Cartwright, both national officers, visited the sorority this winter.



Phi Lambda Chi



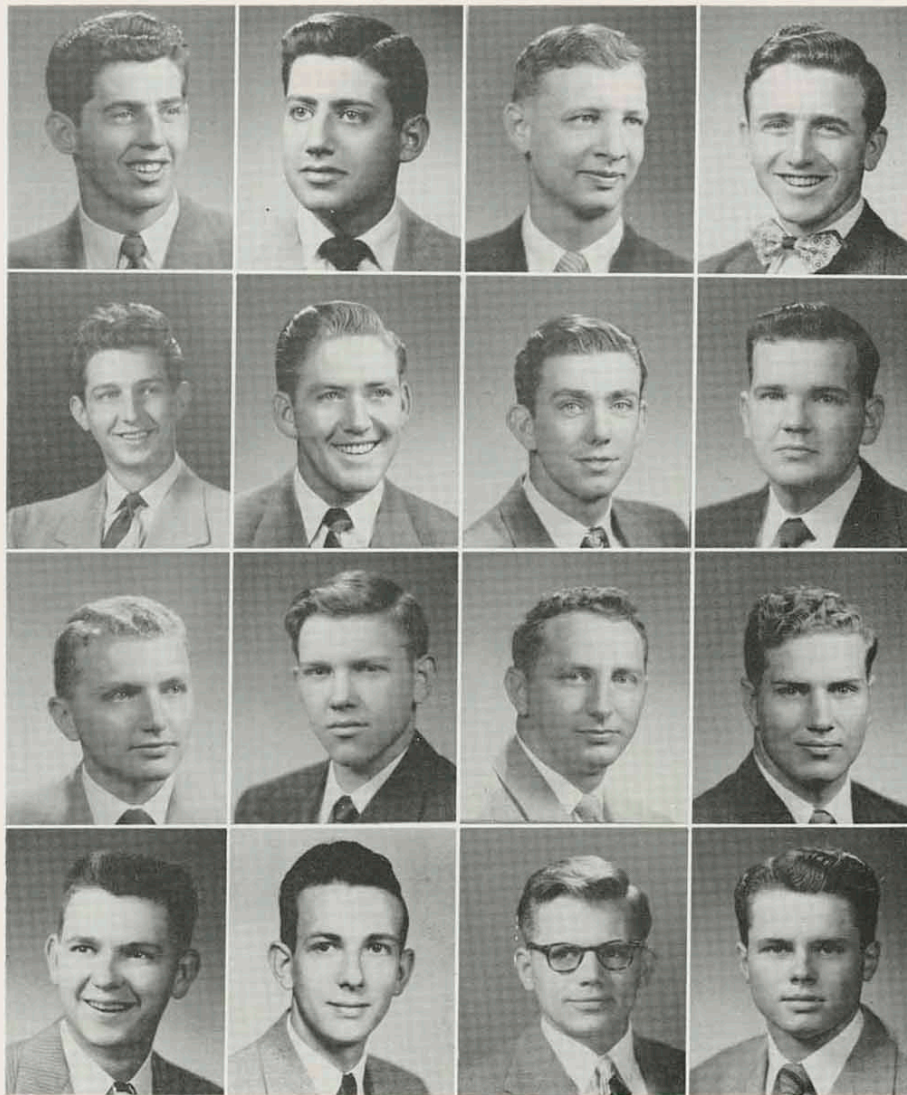
Spring Pledge Class—Robert Reavis, Robert Jacobs, Lex Evans, Edward Ricketts, Glenn Holmes, Stephen Davis.

Zeta Chapter of Phi Lambda Chi was installed on the campus of Kansas State Teachers College, January 14, 1950, with a charter membership of sixteen men.

Although new on the campus, Zeta Chapter is well on its way to becoming a highly successful fraternity. This year, in keeping with the fine traditions entrusted to the chapter, the fraternity participated in many and varied activities. Included in these were a Thanksgiving banquet, several parties, and the annual spring formal.

Zeta Chapter strives for high scholastic standing and encourages cooperation between various other organizations and the school administration.

Officers of the fraternity are: Bill Agnew, president; Bob Agnew, vice-president; Clifford Lee, treasurer; Welby Parson, recording secretary; and Bob Holland, corresponding secretary. Sponsors of the fraternity are Forest Penny and Ralph Wright.



Bobby L. Agnew
Bill D. Agnew
Stephen Blum
Orville Cook

Donald Daniels
William Dowling
John Flater
Bob Holland

Bob Hull
Charles Johnson
Bob Lawson
Clifford Lee

Damon Lloyd
Welby Parson
Richard Rice
Vern Taylor



Eugenia Allen
Norma J. Amer
Roberta Bobbitt
Beverly Craven
Betty Criger
Lucretia Cushman
Retta Dining

Elaine Duarte
Kay Fenton
Mary Jo Forsyth
Eleanor Fyock
Doris Green
Eleanor Gruber
Shirley Herlocker

Carlene Hutchison
Hideno Inamine
Esther McFeater
Leona Meadows
Marjorie Newkirk
Joyce Noddin
Barbara Palling

Jo Ann Sell

Patricia Parmenter
Rosemary Parrish
Lucy Pennington
Sue Carol Rash
Marilyn Rogers
Frances Seckman

Dawn Tedlock

Betty J. Smith
Dorothea Snodgrass
Betty Souder
Louise Stansel
Lela May Sterling
Veralee Taylor

Helen Yeates

Virginia Thomas
Carol Wadleigh
Barbara Weaver
Mary Weng
Marjorie Wheatley
Norma Wilson
Marilyn Youse

Theta Sigma Upsilon



Seated—Eugenia Allen, editor; Jo Ann Sell, president; Marjorie Wheatley, pledge mother.

Standing—Louise Stansel, secretary; Betty Smith, asst. president; Mary Weng, treasurer.



Theta Sigma Upsilon was founded in 1921 at Emporia, Kansas; Epsilon chapter was installed on the Pittsburg campus in 1924. Since that year its members have upheld its motto "The Higher Good," ever keeping in mind its five-fold objective: the physical, intellectual, social, ethical and spiritual development of each girl.

The faculty advisors are Miss Frances Hashbarger and Miss Helen Kriegsman, and the chapter mother is Miss Elmina E. Graham.

Four Thetas were elected to Who's Who: Jo Ann Sell, Louise Stansel, Marjorie Wheatley and Barbara Weaver. Thetas hold offices in YWCA, Newman Club, Kappa Phi, Wesley Foundation, Roger Williams Fellowship, Theta

Alpha Phi, Education Club, Kappa Pi, Home Economics Club, Sigma Alpha Iota, Language and Literature Club, Christian Fellowship and Panhellenic Council.

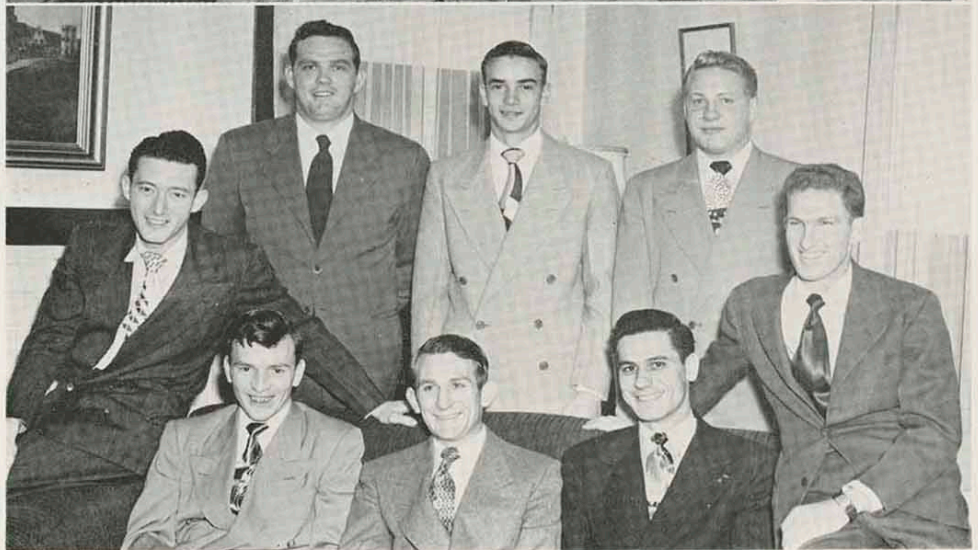
Thetas have membership also in Polymnia Club, Band, Choir, Orchestra, Pep Club, Future Teachers of America, Student Council, Women's Recreational Association, Delta Psi Kappa, Pi Omega Pi, UNESCO, and the Kanza staff. Epsilon chapter also participated in the W.S. S.F. drive and Religious Emphasis Week. The social service project this Christmas was sending boxes of clothing to the Salvation Army, caroling and presenting gifts to members of the Roeber Home.

Kappa Delta Kappa

Standing—Walter McGregor, Charles Sample, William Burns. Seated—William Lehr, Clifford Hardy, Gary Parsons, Philip Gass.



Standing — James Harris (pledge pop), Henry Scott, William Kepler. Seated — Gordon Lohr (secretary), Burton Howard (vice-president), Robert Clemmons (president), Dean Montgomery (treasurer), Orville Wells (corresponding secretary).



Kappa Delta Kappa was formed in 1926 and received its charter, April 14, 1927. The purpose of the organization is to promote physical, intellectual, social, ethical, and professional development of its members.

The charter members were Lawrence Curfman, Charles Bachman, Frank Hansford, Howard Laughlin, Johnny West, and Eugene Frank. Today the organization has an active alumni of over one thousand members.

Kappa Alpha Psi



Seated—Arthur L. James, James Easter, Eugene Terry, LeRoy Everett, Warren L. Work, Z. J. Nevels, Lloyd Brown, T. Homer Denney, Jr.

Standing—Richard C. Estes, Bob E. Bowers, Jackson Van Trece, Frankie G. Tolson, Louis Braxton, Fred L. Hill.

Officers—Jackson C. VanTrece, Polemarch; LeRoy Everett, Vice Polemarch; Warren L. Work, Exchequer and Keeper of Records; Eugene Terry, Strategus; Johns S. Harwell, Lt. Strategus (not pictured); James Easter, Graduate Board of Directors.

Kappa Alpha Psi, a national fraternity, was founded at Indiana University in 1911. The founders envisioned an organization which would reach out into all parts of the country and bring together college men of like ideals, potentialities and attainments for the mutual benefits which such an organization offers.

Alpha Psi chapter at Pittsburg, Kansas, was organized by Atty. A. W. Martin, Prof. Percy H. Lee, and Dr. J. F. Evans, all former students of the College, on May 11, 1936, and is one of more than 180 chapters whose thousands of members pledge to highest ideals of manhood, of scholarship, and of service doing honor to the fraternity. The Scroller Club is the pledge club of the fraternity and the chapter dean of pledges is LeRoy Everett.

Panhellenic COUNCIL



*Seated—Betty Souder (vice-president-treasurer), Carole Didier (president), Jackie Colson (secretary-editor), Roberta Evans.
Standing—Kay Fenton, Margy Carlson, Martha Lasley, Maxine Alden, Jo Ann Sell.*

The Panhellenic Council, composed of members from the three social sororities, is dedicated to the task of fostering better understanding and cooperation among the sororities, of making the rules to govern the rushing activities of the member groups, and of promoting the growth of new chapters on the campus and the scholarship of participating sororities.

Each year Panhellenic sponsors two social events on the campus. The first of these is the Freshman Tea which is held in the fall during orientation week for the purpose of acquainting all girls new to the campus with campus life and the Greek sororities. The Panhellenic Square Dance is the other event on the social calendar. A scholarship cup is awarded each semester to the group with the highest grade point average.

Officers of the Council are rotated each year among the sororities. Two other representatives from each group are chosen to serve on the Council. Edwina Fowler is the faculty advisor for the Council.

Interfraternity COUNCIL



Seated—Bill Brumbaugh, Bert Howard (president), LeRoy Everett, Bert O. Keeney (sponsor).

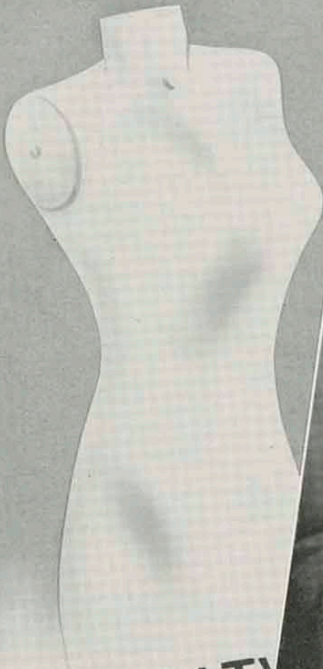
Standing—Charles Chirby, Henry Jones, Welby Parson, Bill Agnew, George Miller, George Saunders, Orville Wells.

The Inter-Fraternity council is composed of two representatives from each of the five fraternities on the campus.

The council through cooperative effort and planning has promoted numerous Greek activities, which are usually highlighted by an annual Inter-fraternity dance.

This year the fraternities cooperated in their endeavor to orient new students to the social and personal benefits to be derived by participating in fraternity life.

LUCY PENNINGTON
Phi Sigma Epsilon



Queen of BEAUTY



BONITA STUCKEY
Wesley Foundation



VERALEE TAYLOR
Kappa Delta Kappa

QUEENS



PAT GAYLOR
Phi Lambda Chi



EDITH LAND
Willard Hall

WINIFRED EASTERDAY
Sigma Alpha Iota



BEVERLY CRAVEN
Kappa Pi

CAROL DUNSHEE
Indep. Men and Women

SHIRLEY HERLOCKER
Home Economics Club

JEAN JONES
Dames Club

OF BEAUTY





CAROLE DIDIER
Theta Alpha Phi

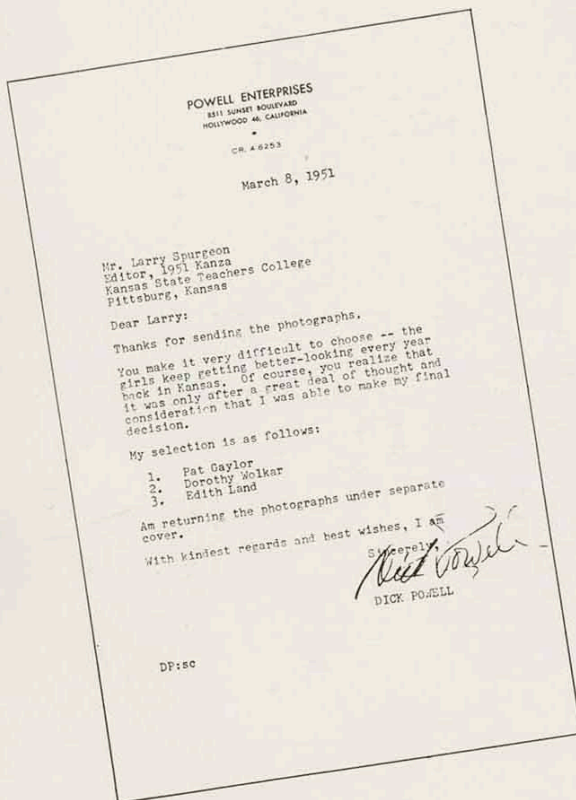
DOROTHY WOLKAR
Industrial Arts Club

JANICE RICE
Alpha Sigma Alpha

JANE WILLIAMS
Press Club



The 1951 Kanza Queen—
Pat Gaylor



A well-kept secret—Powell's letter to the editor.



The leader of the band—RAY PEARL

The man that picked the queen—DICK POWELL.



While flash bulbs popped—Harry Spurgeon, Charles Sample, Dorothy Wolkar, Pat Gaylor, Bob Agnew, Laurence Cutler, Edith Land, Duane Law-ellin.

The Court of Gus was the main theme of this year's Kanza Ball. Gus reigned over a dance floor decorated with a canopy of gayly-colored streamers and balloons. Beautiful formals swirled and well-polished shoes kept time to Ray Pearl's Musical Gems.

The highlight of the Ball was the crowning of Pat Gaylor as queen of the 1951 Kanza. Miss Gaylor was crowned in front of a six foot replica of the Kanza cover. Dorothy Wolkar and Edith Land were chosen as her attendants.

When the last Musical Gem had been played and the ball had become more than a date circled on the calendar, it was hard to believe that the event next year would be even a bigger and better ball than this one.



Apple DAY

"Queen" Virginia Sullivan and "King" Mark Plummer hold court. L. G. Cutler polishes the apple for Margaret Kelley, Glen Clugston lights a torch to carry on. The tall and the short of the Apple Day dance, Jo Ann Hammond and Bernie Tye.



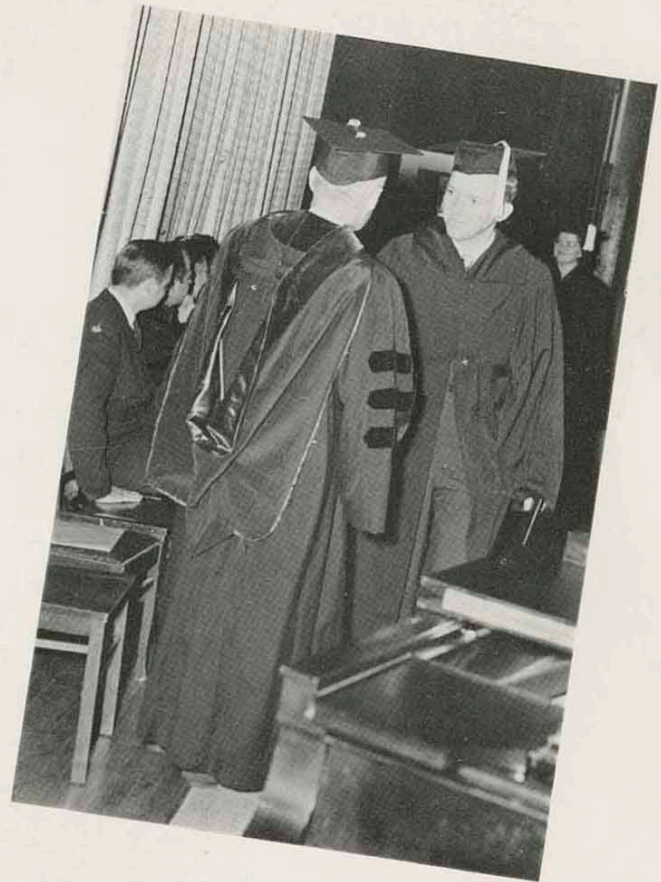
The BIG MOMENT

Graduation

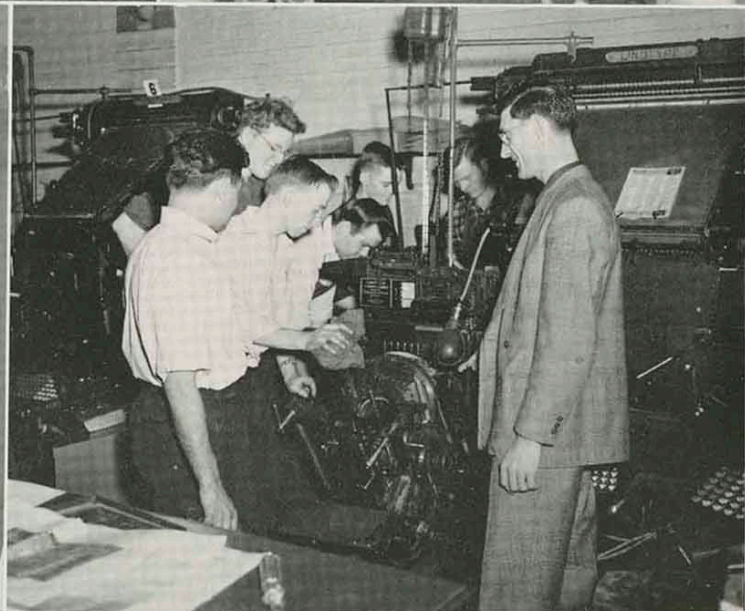


Caps and gowns! After four long years of study, social life and college activities the day has arrived. How you have looked forward to this day!

And now that the day is here, it will be one of the greatest days in your life. You will be happy when you try on your cap and gown for size, sad when you tour the oval to say goodbye to the campus and buildings, proud on your march to the auditorium, and lonely when you realize that this is the last time that you will see some of the friends you have worked and played with for the last four years. But most of all you will remember it for the feeling of accomplishment you will have when you march across the stage to receive your diploma.



Unrehearsed...



Mona Markham puts the finishing touches on a frat panel. Hideno Inamine assists a Theta pledge with the bat. Edith Land and Duane Lawellin step out on the "Queen's Dance," at the Kanza Ball. Louis Tassi explains the finer points of a linotype machine to Sebastian "Mike" De Modica.

Dorothy Wolkar entertains at the Tri-Sig open house. Eugene Terry inspects his apple, Tomas Edgar samples his. Main entrance, K. S. T. C. Social Science students visit the State House. The Alphas serenade the Tri-Sigs. "Sully," Mark, and an Apple.



THE *Loop*

What was the record of the Gorillas at the end of the season? Who won the 1951 CIC title? To keep the record straight here is how the season ended.

The Emporia Hornets downed the Pittsburg Gorillas 61-50. The Pittmen were cold under the basket the first half of the game. During the second half the Gorillas warmed up and gave the Hornets several bad moments before the game was over. In the final quarter the score was 48-50. The Hornets held the Gorillas to six points by a semi-freeze.

Pitt went into an overtime period to defeat the Moundbuilders of Winfield 50-47. Pitt started off in the lead but the builders drew ahead in the waning minutes of the first period. The Gorillas fell further behind in the second period but rallied in the third. The game was tied at 44-all at the end of the regular period and went into extra time.

The Lancemen edged by Springfield 69-65 in an overtime period. The Springfield Bears had a 12-point lead at the end of the half. Pitt staged a rally in the last half to hand Springfield their third defeat of the season.

The Gorillas seemed to be on a winning streak. The Pittmen plastered Washburn 75-64. A rally in the third won the game for the Gorillas. The Pittsburg *Headlight* said "It took one of the best games of the season for the Gorillas to do the trick but once the Lancemen got a

full head of steam, there was no stopping them."

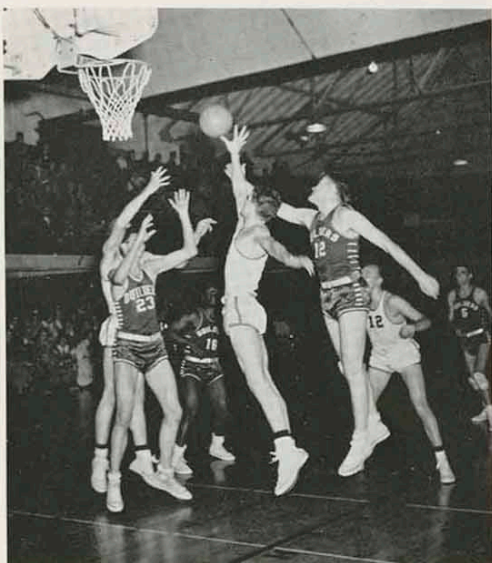
The fifth victory in a row! Fort Hays was trampled 73-49. The Gorillas grabbed an early lead and held it throughout the game. The Fort Hays' Tigers put up a stiff fight but were no match for the Gorillas.

Emporia State number six to be defeated in the Gorilla winning streak. During the first quarter Pitt went to town. The team built up a 22-9 lead by the end of the first ten minutes of play. Emporia never fully recovered from the shock attack. It was the first Pittsburg victory over the Emporians since the recent war. Final score was 63-57.

The Pitt winning streak hit a snag when the Gorillas met the Fort Hays Tigers. The Tigers won 76-70. The game was loaded with fouls—38 for the Gorillas and 21 for the Tigers. Pitt was in the lead at the end of the third period. The Tigers tightened up their defense and started hitting the net. The score was 70-68 with two minutes to go when Hays threw in three goals to put the game on ice. Final score 76-70.

The last game of the conference was a play off between Emporia State and Washburn. In the play off Washburn staged a comeback in the second half to defeat Emporia and win the CIC title.

The loss put Emporia State into a tie for second place with the KSTC Gorillas!



Melting POT

Organizations





TOP PICTURE. First Row—Kay Fenton, Betty Leffler, Retta Ann Dining, Marjorie Pflug, Pat True, Eva Pitzer, Norma Wilson, Betty Fisher. Second Row—Dorothea Snodgrass, Mary Ann Abbey, Mary Ann Butler, Sue Silman, Elsie Dungan, Elizabeth Phelps, Evelyn Pappas, Eleanor Gruber, Margaret Early. Third Row—Allene McDaniel, Mary Denton, Betty Williams, Betty Smith, Betty Souder, Lorraine Cooper, Leona Meadows, Rosemary O'Mally, Betty Criger, Eleanor Fyock. Fourth Row—Mrs. Hazel Cockerill, Claire Marsh, Rosemary Keenan, Charlotte Douglas, Rosemary Parrish, Jane Roberts, Clarice Beaver, Catherine Trau, DeLoryse Hough, Lulu McBee, Ernestine Medcalf, Doris Green, Wilma Fahler.

BOTTOM PICTURE. First Row—Frances Seckman, Jo Ann Hammond, Edith Land, Marilyn Rogers, Lucy Akins, Lucretia Cushman, Janie Williams. Second Row—Jean Halpain, Laura Clark, Mildred Cross, Martha Lasley, Jackie Colson, Veralee Taylor, Delores Adams, Beverly Ackley, Deloris Zimmerman. Third Row—Lillian Curry, Sara Ann Archibald, Louise Curry, Francis Call, Louise Hughes, Margaret Charlton, Martha Carmichael, Almeda Stevenson, Carlene Hutchison, Louise Kyser, Lynette Bowles, Cynthia Zimmerman, Sue Carol Rash. Fourth Row—Lela Mae Sterling, Joye Fromong, Mary Weng, Mitzi Helms, Jalie Lee Paris, Martha Jean Reagan, Elaine Mulliken, Mary Helen Springer, Darlene Hanks, Ila Bricker, Marjorie Wheatley, Betty McBee.

Willard HALL

Kappa Mu EPSILON

Kappa Mu Epsilon is a national fraternity for college students majoring or minoring in mathematics. It was founded in 1931. The Kansas Alpha Chapter at Pittsburg was installed January 30, 1932.

Club Officers are Tom Clark, president; Richard Slinkman, vice-president; Jean Halpain, secretary; Joe Butler, treasurer; and Dr. R. G. Smith, sponsor.

The aims of Kappa Mu Epsilon are to learn to appreciate the beauty of mathematics, to foster scholarship, and to maintain fellowship and cooperation with individuals and organizations interested in mathematics.

Seated—Jay Allen, Gladys Alling, Tom Clark, Joe Butler, Jean Halpain, Helen Kriegsman, Virginia Adams, Richard Dale.

Second Row—R. G. Smith, W. H. Hill, James Patterson, Lowell Needham, Gerald Kyser, Donald Bruyr, David Wilson, L. E. Curfman, W. E. Matter.

Third Row—J. D. Haggard, R. W. Hart, William R. Slinkman, William Brumbaugh, Leo Utt, Fred Luke, Maurice Perkins, F. C. German, William O'Brien, Robert Thomas.

Fourth Row—Clyde West, James Modlin, Robert Green, James Pike, Carl Stacy, John Doty, Franklin Bouser, Lee Roy Gray, Jack Barker, Theodore Nairn, James McKimson.



YWCA



First Row—Lillian Curry, Sara Ann Archibald, Clara Jane Robb, Mariana Millsom, Lois Griffith, Darla Buchanan, Roberta Bobbitt, Leona Meadows, Mary Ann Butler.

Second Row—Janie Hall, Rozella Newman, Hideo Inamine, Mr. William Hall, Marilyn Mosier, Lela May Sterling, Eleanor Davison, Margaret Early, Esther McFeaters.

Third Row—Betty Williams, Geraldine Nichols, Dawn Tedlock, Coralyn Kittell, Mickey McCoy, Phyllis Colwell, Helen Meek, Ella Mae Ross, Sammie Jackson.

Fourth Row—Janna McEndree, Dolores Zimmerman, Elsie Dungan, Louise Curry, Marilyn Rogers, Shirley Johnson, Shirley Meeder, Betty Fisher, Veralee Taylor, Lucy Pennington.

Not Present—Pat Harkins, Lois Parker, Shirley Herlocker, Mildred Calhoun, Blanche Gray, Elisabeth Phelps.

The College YWCA is an organization for all girls on the campus. Its purpose is to "... Unite in the desire to realize full and creative life through a growing knowledge of God." The organization helps to support the WSSF drive, Religious Emphasis Week, the freshmen picnic and other activities on the campus.

The regular meetings are on Wednesday evening at five with programs that are varied, interesting, and inspirational. Fall and spring retreats, dances, banquets, and the Senior Honor Breakfast are promoted each year.

Social Science CLUB



The Social Science Club is one of the Department's many activities—conferences on politics, workshops on marriage and current affairs, radio panels, Great Issue lectures, national field trips, and a film series. At K.S.T.C., it's modern social science for modern students.

Phi Alpha Theta, national honor society in history, was originated at the University of Ar-

Seated—Dr. Alvin Proctor, Carl Liebig, Martha Huston, Marjorie Wheatley, Keitha Bohlander, Dr. Elizabeth Cochran, Joe Connor, Theodore Huffman.

Second Row—Donald Eugene Wilson, Elmer Frazell, Eldon Hart, Leon Cole, Max Minor, Victor Lindeman, Cletis Harris, Morris Stevens, Harry Spurgeon, Marvin Gilbreath.

Third Row—Mark Plummer, Robert Sullivan, Robert Hedgecock, Dr. Ralph Smith, Prof. S. L. Householder, Stephen Davis, Eugene Terry, Walter Meeks.

kansas in 1921 for the purpose of stimulating interest and scholarship in history. In the thirty years since its founding Phi Alpha Theta has grown into an organization with chapters on a hundred campuses across the United States.

The Lambda Chapter was installed at Kansas State Teachers College in May of 1930. Election to Phi Alpha Theta is on the sole basis of high academic standing.

Phi Alpha THETA

Seated—J. C. Straley, Martha Huston, Dudley T. Cornish, Theodore Huffman.

Standing—Leon Cole, Harry Spurgeon, Robert Sullivan, Victor Lindeman, Alvin Proctor, Max Minor, Edwin Walbourn, Wayne Shireman, O. F. Grubbs, Marvin Gilbreath.

Not Present—Charles Brown, Keitha Bohlander, Mervin Jantz, Ruth Biles, Marion Huffman, Robert Lawson, Floyd Belk, Marvin Simpson, Temple Hill, Clay DeFord, Ernest Mahan, Bob Hickman, and Meredith Huffman.



UNESCO



Seated—Frank E. Powell, Joseph Rahmanan, Mansour Rahmanan, Carl Liebig (extension program chairman), Keitha Bohlander, Mona Markham (corresponding secretary), Eleanor Gruber (treasurer).

Standing—Clair O. Lovelace (president), Dean Paul Roberts, James Easter, Russell Pegram, Eugene Terry, Willa Thacker, Marilyn Parker (program chairman), Theodore M. Sperry (sponsor), R. W. Wright (sponsor).

The local chapter of UNESCO is designed to give students on the campus information about and appreciation of the organization and activities of the United Nations and its specialized agencies. Representatives of the local chapter go in a service capacity to civic clubs, high school assemblies and women's clubs within a radius of 100 miles to advance the work of the United Nations. It is the only organization on the campus devoted exclusively to United Nations work.

The local chapter is affiliated through the state organization with national and international UNESCO groups. Selected members of the local group regularly attend state meetings where they have an opportunity to meet with persons of similar interests from other campus and county organizations.

The chapter is designed to simulate the United Nations organizations with representatives in the local chapter from each of the college organizations as there are representatives in the United Nations from each of the member nations. Members at large are welcome and have equal status with official representatives.

Sinfonia

Beta Delta chapter of Phi Mu Alpha Sinfonia was organized at Pittsburg State Teachers College October 9, 1928. Since then it has constantly grown and is now one of the most honored groups on the campus.

Phi Mu Alpha Sinfonia stands for the advancement of music in America, and Beta Delta chapter is composed of the musically-minded men of the campus.

The slogan of the fraternity is "The Manly Musician and the Musicianly Man." Advisors for Beta Delta chapter are Miss Ruth V. Stamm and Mr. Robert Schott.

First Row—Cletus Haines, Bill Allen (parliamentarian), Arthur Easterday (warden), Dale Swall, Dwight Douglass (president), Bill Lothead, Claude Newcomb (province governor), Alfred Hanes.

Second Row—Bill Albers, Lloyd Wright, Roger Thompson, Jim Baird, Kent Garrison, Roger Coppenbarger, Dillard Cox.

Third Row—Gus Dittman (national councilman), Fred Clem, Jack Glick, Robert Wolff (secretary-treasurer). Not present are Glen Clugston (vice-president) and Milo Sharp (alumni secretary).



Women's PHYS. ED. Majors



First Row — Marjorie Martinous, Cynthia Zimmerman, Mary Ellen Glover, Donna Needham, Rosella Towson, Martha Leonard.

Second Row — Virginia Ambler, Zeola Jones, Corrine Russell, Joye Fromong, Elaine Allison, Jalie Lee Paris, Eva Belle Fine, Lynette Bowles, Marlene Plagens, Joan McClure, Carol Smith, Margie Estes, Margaret Charlton, Nadine Wake, Sue Grant.

First Row—Zeola Jones, Corrine Russell, Marjorie Martinous, Lynette Bowles, Margaret Charlton, Rosella Towson, Cynthia Zimmerman, Sue Grant, Nadene Wake, Virginia Ambler, Martha Leonard.

Second Row — Elaine Allison, Joye Fromong, Donna Needham, Jalie Lee Paris, Eva Belle Fine, Marlene Plagens, Joan McClure, Mary Ellen Glover, Margie Estes, Carol Smith.



W.R.A.

Kappa DELTA Pi



Seated—E. M. Anderson, Elizabeth Anderson, James Lyle (treasurer), Keitha Bohlander (secretary), Belle Provorse, Eulalia Roseberry, Charles Corporon (president), Joye Fromong (vice-president), Jane M. Carroll, Ethel Peck.

Second Row—Paul Willis, Harry Spurgeon, Larry Tarbell, Dick Slinkman, Wayne Shireman, Bill Brumbaugh, Leo Utt, Annie Marriott, Odella Nation, Gwendel Nelson, Bob Holland, Mayo Jones, Frances Tedlock, Margaret Coventry, Janet Dalton, Joe Butler, Wayne Carlson.

Third Row—Helen Kriegsman, Hulda Berg, Pearl Strawn, Faye Douglas, Barbara Weaver, Kathaleen McClanahan, Marjorie Wheatley, Billye Talmadge, Margy Carlson, Almeda Stevenson, Nancy Anderson, Leona Meadows, Lela Sterling, Bea Tompkins.

Kappa Delta Pi is an international honorary educational society. Its purpose is to foster high professional standards and to recognize outstanding service in the field of education.

The society is open to juniors, seniors, and graduate students in the college who stand high in scholarship, leadership, and cooperative spirit on the campus.

Alpha Zeta chapter of Kansas State Teachers College, Pittsburg, was established, March 14, 1925. Local chapter meetings are held on the third Wednesday of each month. Outside speakers are invited, and subjects pertaining to up-to-date educational policies are discussed.

Epsilon Pi TAU



First Row—Leroy Brewington, Ray Boyer, Forest Penny, Ernest Baxter, Lemoine Carlyon, O. A. Hankammer, Laurence Cutler, Leo Ensmann.

Second Row—George McKinney, Lewis Kollhoff, Kenneth Mendenhall, Franklin King, Fred Stumbo, Merlin Staatz, Clyde Gilbert.

Third Row—Ernest Hart, Wayne Craven, Keith Kirby, Warren McClellan, Richard Johnson, Chester Grimm.

Alpha Alpha chapter of Epsilon Pi Tau, international industrial arts honorary scholastic fraternity, was installed on the campus of Kansas State Teachers College on May 16, 1947.

Maintaining high professional scholarship in its membership and giving recognition to those who have performed outstanding services in the field of industrial arts are the purposes of this society. The aims of Epsilon Pi Tau are skill, social efficiency, and research.

In accordance with the new constitution adopted this year, membership is offered to those juniors and seniors who rank in the upper 20 per cent of the baccalaureate candidates in industrial education or 50 per cent if a graduate student. Each must possess high leadership qualities and good personality traits. Alumni requirements for membership are successful and outstanding performance as a teacher in Industrial Education.

Kappa PI

Kappa Pi, national honorary art fraternity, was founded at the University of Kentucky in 1911. Tau chapter was installed on the campus of Kansas State Teachers College in the spring of 1938. Membership is open to men and women of junior-senior rank, based upon scholarship and proved ability in the field of art.

Officers of the organization are: Charles C. Caywood, president; Gene Logue, vice-president; Louise Elliff, secretary; James Embrey, treasurer; Lou Kirby, historian. Bertha A. Spencer, sponsor of Tau Chapter is also national treasurer of Kappa Pi.

Active members of Tau Chapter are: Myrtle F. Bartolini, Frances Baxter, Emajeane S. Boone, Beverly B. Craven, Charles Caywood, James Embrey, Louise Elliff, Ferne Epperson, Bess Graves, O. A. Hankammer, Miriam Hankammer, Bert O. Keeney, Lou Kirby, Gene Logue, Lorena McCoy, Francis Murth, Forest Penny, Katherine Rae, Dorris W. Rouse, Oren R. Sloan, Arthur Scott, Christine Scott, Bertha A. Spencer, and Wilma Troxel.

Left to Right—Beverly Craven, Francis Murth, Frances Baxter, Katherine Rae, Charles Caywood, James Embrey, Bert O. Keeney, Lou Kirby, Bertha Spencer, Louise Elliff, Emajeane Boone.



Kappa PHI METHODIST WOMEN



Top Picture—First Row—Keitha Bohlander, Lois Parker, Bonita Stuckey, Mildred Cross. Second Row—Patsy Bammann, Lynette Bowles, Wilma Da'ns, Hideo Inamine, Thelma Wrestler, Ila Bricker. Third Row—Beverly Craven, Carol Walker, Carole Didier, Rita McCoy, Charleen McClanahan, Clarice Beaver.

First Row—Nancy Anderson, Sara Ann Archibald, Mariana Millsom, Marilyn Mosier, Louise Curry—president, Helen Meek, Mrs. Ralph Perry—national treasurer, Lillian Curry, Rozella Newman, Lois R. Griffith. Second Row—Mrs. Charles Burner and Mrs. Wayne Dunlap—sponsors, Carlene Hutchinson, Eleanor Davison, Jane Roberts, Louise Elliff, Lou Kirby, Kathaleen McClanahan, Lela May Sterling, Betty Doll, Mary Ann Butler, Leona Meadows. Third Row—Betty Criger, Margaret Kelley, Mary MacMurray, Elisabeth Phelps, Martha Lasley, Ruth Ann Bauersfeld, Retta Dining, Deloris Taylor, Jackie Colson.



Pep CLUB

PORTER LIBRARY



Under the leadership of Dick Slinkman the Pep Club went "all out" this year in bolstering the morale of the K. S. T. C. football and basketball squad. Accompanying the squad on several trips, the club provided a vocal chord counter-attack to opposing pepsters in a sportsmanship-like manner.

Homecoming, the big event of the year on any school agenda, was entered into wholeheartedly by the pep club beginning on Friday night with a burial of Ichabod and continuing Saturday with the down-town parade; cheering at the game itself and the victory dance Saturday evening.

Climaxing the year was organizational night, which probably promoted more school spirit than any other event of the year. Trophies were awarded the two organizations displaying the most team support and membership attendance of the evening. The Phi Sigs were the winning men's organization and the Thetas won the other trophy.

Supporting Dick in his role of prexy was the all-important nucleus of the club, the cheerleaders: Don Overman, Dollie Murty, Mary Canny, Lois Curless, Jonnie Polston, Chuck Bavuso, and Jim Ellisor, whom Uncle Sam called before the finale of the season. M. J. Little is sponsor of the organization.

First Row—Richard Slinkman, Marlene Plagens, Donna Alderman, Rose L. Fliss, Dorothy Wolkar, Cletis Harris, Eugene Terry.

Second Row—Phil Doty, Rosemary Keenan, Virginia Adams.

Third Row—Beverly Cantrell, Phyllis Stutsman, Richard Kingston, Wayne Shireman, Max Minor, Margaret Charlton, Lucy Akins, Retta Dining.

Fourth Row—Sammy Heryford, Dorothy Tustin, Mildred Cross, Beverly Bates, Pat Short, Marcia Ingram, Veralee Taylor, Eva Pitzer.

Fifth Row—Merle Hardin, Allan Bryant, Bob Ford.

Sixth Row—Mary Weng, Roger Thompson, Jack Irwin, Virginia Ambler, Frank Powell.



Independents



Seated—Evelynne Cederlund, Allene McDaniels, Betty Leffler, Ila Bricker, Maud McBee, Betty McBee, Lynette Bowles, Dolores Adams, Aaron Butler.

Second Row—Duane Bacon, Frank Slapar, Charles Corporon, Jim Holman, Charles Bennett, Darlene Hanks, Martha Jean Reagan, Roger Thompson, Phil Doty, Jim Ruggles, Jim Baird, Ralph Peck,

Third Row—Jack Theis, Robert Slapar, Ralph Montee, Max Minor, Perry Page, Kent Garrison.

I. S. A. was organized in 1948. It won its first student election three years ago and has been an active, influential body since its inception. Membership is composed of students who have chosen not to become affiliated with any Greek social organization. While not the largest organization on the campus, I. S. A. has certainly been a very powerful one during the past three years.

Formed to provide a strong political minority party I. S. A. is now the incumbent party, but its activities have not been confined to politics. I. S. A. members have been named to every important Student Council committee this year, numerous parties and bull sessions have been held, heated discussions have opened the way for more enlightenment, and several I. S. A. members have been named to the collegiate *Who's Who*.

Psi CHI

Psi Chi is a national organization in psychology founded September 4, 1929, during the International Congress of Psychology at New Haven, Conn. Its purpose is to advance the science of psychology and to maintain scholarship of the individual members in other academic fields as well as in psychology.

The Kansas State Teachers College chapter was formed and became a member of the national organization in 1941. The local chapter is the only chapter located at a teachers' college. Membership is limited to majors and minors in the field who have excellent or superior academic records in psychology and above average work in all other subject fields.

Seated—Shirley Barker, Evelyn Pappas, Dr. Dorothy Simrall, Marilyn Mosier, Wayne Shireman.

Standing—Dr. Otis Mumav, Stanley Roberson, Marvin Simpson, Lewis Gilbreath, Richard Bird, R. W. Wright, Prof. Ray Baird, Dean Eugene Dawson, Charles Baker, Dr. William A. Black, Dr. J. A. Glaze.



YMCA

The YMCA is composed of college men who desire to discover for themselves the highest ideals of Christian living and service, and to have a part in making these ideals operative on the campus and throughout the world.

In an effort to fulfill these ideals, the college YMCA has accomplished the following: Assistance in freshmen orientation, enrolling periods, and Homecoming; the sponsorship of Religious Emphasis Week, an Inter-faith breakfast and an Easter Service. It organized the International House, and gave memberships to men leaving for the armed services, as well as two scholarships.

Regular "Y" meetings included worship, speakers, discussion groups, and recreation. Five members were sent to the National Assembly and eight were sent to the State Conference. Service also included helping the community with scholarships for needy "Y" boys in Pittsburg and in Christmas carolling to shut-ins.

Seated—T. William Hall, Jim Holman, Leon Cole, Fred Stumbo, Paul Willis, Dudley T. Cornish.

Second Row—Robert Ford, Jim Ruggles, Rolando Yujah, Don Hight, Roger Thompson, Duane Lawellin, Charles Scott, Harry Cann, Max Lundquist, Cecil Brown, Duane Bacon.

Third Row—Bill Stewart, Richard Joseph, Russell Pegram, Thomas Edgar, Bob Stahl, Roy Bennett, Bill Harman, Sammy Heryford, Max Minor, Bill Ellisor, Loren Palmer, Richard Dale, Phil Doty, Kent Garrison, Myron Fansler, Max Rahmanan, Noman Fujimura.



The Cabinet



Seated—Sammy Heryford, social responsibility; Jim Holman, treasurer; Leon Cole, president; Paul Willis, secretary; Fred Stumbo, second vice-president.

Standing—T. William Hall, advisor; Russell Pegram, membership chairman; Jim Ruggles, publicity chairman; Loren Palmer, world relatedness; Duane Lawellin, campus affairs; Bill Harman, concessions; Harry Cann, recreation; Myron Fansler, Christian faith; Dudley T. Cornish, advisor.

Leon Cole calls for the business of the day.



Industrial EDUCATION *Club*



TOP PICTURE

Seated—O. A. Hankammer, E. W. Baxter, L. G. Cutler, Loren Palmer, Forest Penny, Lemoine Carlyon, Charles Morgan.

Second Row—Custer Carpenter, William W. Harriss, Glenn Gable, Oliver Koch, Richard Kingston, Bill Hopkins, David Dodge, Robert W. Harbour, Gordon Knuth.

Third Row—Clyde Williams, Max Artinger, Richard T. Kelly, Travis Slaback, Bob Mach, Gerald Bruner, Roy J. Smith, Charles Smith, Pat H. Atteberry.

BOTTOM PICTURE

Seated—Ernest M. Hart, Kent Garrison, Franklin King, Robert Stahl, Jesse Wilson, Jerome Waite, Vincent Pemberton.

Second Row—Kenneth Syring, Orville Wells, Richard Cox, Earl Rich, Ervin Brant, Clyde Gilbert, Richard McCause, Ray Kreutzer, Hervey Fox, Ray Kellstadt, Manco Peek.

Third Row—O. L. Cook, K. C. Hartman, Warren McLellan, Keith Kirby, John Deardorff, Edgar Hallman, Clarence W. Miles, Arden F. Schoenig, Don Jones.

International HOUSE



First Row—Charles Lee, Norman Fujimura (vice-president), Frank Powell (president), Tomas Edgar (steward), Russell Pegram (secretary), Joseph Rahmanan.

Second Row—Ted Huffman, LeRoy Everett, Bob Ford, Marvin Gilbreath, Max Rahmanan, Dudley T. Cornish (adviser), Robert Noble (adviser), Daisy Scott (housemother), T. William Hall (adviser), Alonzo Robinson, Nelson Blythe.

In the International group above, four national origins are represented, members of all three dominant racial stocks are in the group, and many shades of religious belief are represented.

Organized January, 1951, by the College YMCA, supported by the Y and the Student Council, International House provides an opportunity for cooperative and democratic living in an international atmosphere. Membership is open to college men of all national, racial, and religious backgrounds. The purpose of the House is to aid in the full development of democratic individuals through group experience in a variety of intercultural relationships.

International House is supervised by a board of directors composed of both faculty and student members, including representatives from the House.

Newman CLUB



Seated—Martha Jean Reagan, Sue Grant, Norma Holland, Bunny Lindsay, Dollie Murty, Father Stremel, Thelma Williams, Barbara Ensman, Rita Diskin, Rosemary O'Malley, Mariclaire Benage.

Second Row—, Woodrow Holland, LeRoy Everett, Charles Chirby, Sebastian DeModica, Jim Skahan, Jean Charles, Bill Lehr, Mary Ann Horgan, Catherine Modlin, Lena Zanotti, Harold Willard, Vincent Pemberton.

Third Row—Don Manning, Glenn Fialka, Joe Connor, Bernie Tye, James O'Toole, Orland Akers, Paul Bartolini, Steve Davis, Ray Willson.

The Newman Club is a club of culture and fellowship that fosters the spiritual, intellectual, and social interests of the Catholic students of the Pittsburg Kansas State Teachers College in this order of importance: weld them into a common union, assist the Pittsburg Kansas State Teachers College and its students whenever possible, and shall be a member of the Newman Club Federation.

The officers of the club are: Dollie Dean Murty, president; Bunny Lindsay, vice-president; Norma Holland, secretary; Katherine Rae, treasurer; Rev. Alex G. Stremel, chaplain; Orland Akers and Paul Bartolini, sponsors.

HOUSE of 209



Across the street from the gym is the House of 209. The boys that live here are active in almost all of the organizations on the campus and usually the house manages to get its share of honor roll students.

Mrs. Mary McGee has become "Mom" to her boys, and is the center of the friendly atmosphere that always prevails at 209.

Seated—Lewis Kollhoff, Clinton Brown, Gerald Bruner, Glenn Smyth, Richard Joseph, Dale Felty, Walter Brown, Ray Willson, Wayne Shireman.

Second Row—Jay Allen, Larry Tarbell, Robert Mach, Jack Irwin, "Mom" Mary McGee, Richard Kingston, Charles Ginness.

Third Row—Max Lundstrom, Lynn Peters, David Wilson, William Stewart, Jr., Woodrow Holland.

Pi Omega Pi, national business teachers honorary fraternity, was organized to encourage, promote, and create interest and scholarship in commerce, and to promote fellowship among business teachers. Membership is limited to juniors and seniors majoring or minoring in business education who are above average in scholarship.

Omicron chapter was established at K.S.T.C. February 8, 1930, with thirteen charter members.

Pi Omega PI

Seated—Hortense Smith, W. S. Lyerla, Marcella Mouser, Margaret Ann Tinder, Don Overman, Kathryn Calhoun. *Standing*—Clarence Swenson, Kenneth Hillier, Eugene Jewell, James Lyle, Max Minor, Rozella Newman, Robert Nighswonger, Dorothy Bulger, Bill Brumbaugh, Harry Mallard, Clarence Lundquest, Mervin Fichtner, Reid McKinney, Ralf Thomas, M. J. Little.



Alpha Phi OMEGA



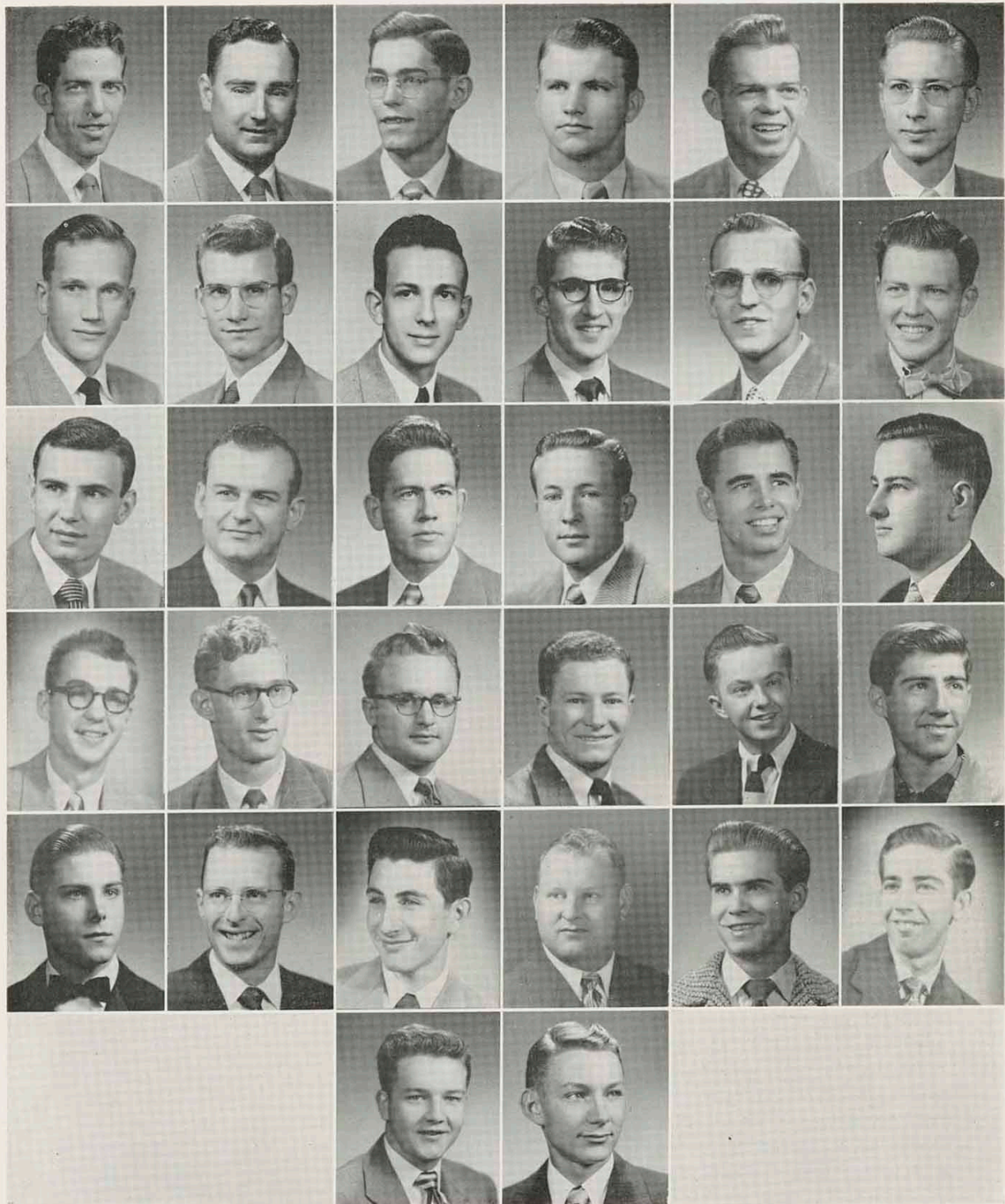
Seated—Robert Stahl, vice-president; Ronnie Roderique, president; Mark Plummer, pledge pop.
 Standing—Ralph Peck, sergeant-at-arms; Jack Theis, treasurer; John Robinson, secretary;
 Tom Beal, jeweler; Phil Doty, historian.
 Not present—Charles Corporon, alumni secretary; and Leon Cole, chaplain.

Delta Mu chapter of Alpha Phi Omega is the service organization on the campus since it was founded on December 15, 1946. Delta Mu chapter is dedicated to service to the student body and faculty, service to youth and community, service to members of the fraternity, and service to the nation as participating citizens. Founded as a national service fraternity in 1925, Alpha Phi Omega is one of the fastest growing organizations in the United States and now has 233 chapters.

Among the services rendered to the campus are helping out with Homecoming and the Kanza Ball, serving as guides to visiting groups, and

serving as election officials. Alpha Phi Omega also sponsors projects of its own, such as the Ugly Man contest, singing valentines, and senior scout visitation day. The annual Sweetheart Dance was held in the Collegiate Room of the Besse Hotel. Six members attended the national convention at Des Moines, Iowa.

Officers for the first semester were: August Lefebvre, president; Jack Theis, vice-president; Leon Cole, pledge pop; Harry Spurgeon, secretary; Ronnie Roderique, treasurer; Milo Sharp, historian; Tom Beal, alumni secretary; Duane Lawellin, sergeant-at-arms. Professor Lewis Caldwell and Gilbert Fites are faculty advisers.



Bob W. Albers
Kenneth Baden
Tom E. Beal
Charles Bennett
Roy S. Bennett, Jr.

Leon Cole
Charles Corporon
Merle D. Creed
Phil Doty
Myron Fansler

William D. Harman
Bob Holland
Gerald Houghland
Richard Jacques
Don Keenan
Richard Kingston

Tommy Kiser
August Lefebvre
William Lehr
John Lock
Manco W. Peek
Lynn Peters

Mark Plummer
John Robinson
Ronnie Roderique
Gordon Ross
Milo M. Sharp

Robert Stahl
William Stewart, Jr.
Jack Theis
Roger Thompson
James Van Horn

Home ECONOMICS Club



Front Row—Beverly Ackley, Helen Meek, Esther Dale, Dolores Adams, Coralyn Kittell, Martha Leonard, Betty Pacconi, Normal Wilson, Eleanore Fyock.

Second Row—Margaret Coventry, Annie Marriott, Mary Canny, E. Louise Gibson, Kathaleen McClanahan (president), Evelynne Cedarlund, Janet Dalton, Norma Holland, Hazel Buck, Pearl Strawn.

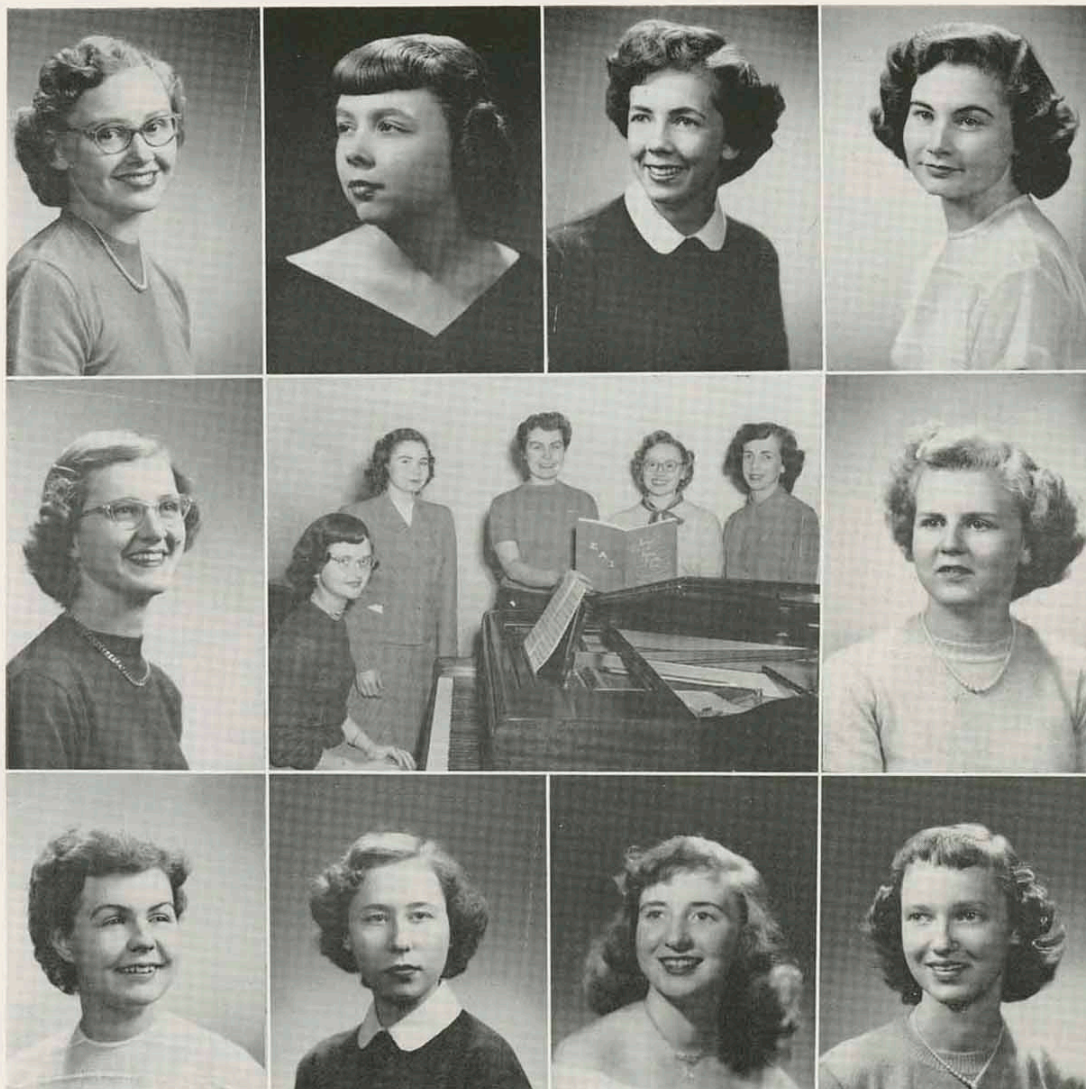
Third Row—Darlene Hanks, Elaine Mulliken, Betty McBee, Charleen McClanahan, Ruth Maninger (vice-president), Lula McBee, Eugenia Allen (treasurer), Demarice Coots, Almeda Stevenson, Mary Elnn Glover, Betty Doll, Esther McFeaters.

Fourth Row—Eleanor Gruber, Lucretia Cushman, Ila Bricker, Retta Dining, Rose Lee Fliss, Elvalee Leonard, Patricia Parmenter.

The purpose of the Home Economics Club is: To strengthen student-faculty relationships; to promote professional development; to interpret the purpose and functions of Home Economics; to work with groups in other countries for development of Home Economics; to promote recruitment in the field; and to provide an opportunity for fellowship among Home Economics students on the campus.

The club membership is composed of majors and minors in the Home Economics field. The group meets once a month for a business meeting and program.

Sigma Alpha IOTA



Center picture—LaVonne Buck (vice-president), Maxine Alden (secretary), Joye Fromong (president), Jo Ann Sell (chaplain), Nancy Anderson (treasurer). Panel pictures clockwise, beginning in the upper left hand corner: Jo Ann Sell, Winifred Easterday, Nancy Anderson, Maxine Alden, Wanda Seem, Eugenia Allen, Gussie Rae Rouse, Pat Epperson, Joye Fromong, Mary Lee Coleman.

Sigma Alpha Iota, a national professional fraternity for women, was organized in 1903 at Ann Arbor, Michigan. It is the oldest and largest organization of its type in the world.

The purpose of the fraternity is to further the cause of music. The group gives loyal support to

the activities of the College and the Music Department.

Advisors for Alpha Kappa chapter are Mabel Newcomb, Eugenia Johnson, and Rose Buchmann. Gabriella Campbell is Theta Province President.

Education CLUB



First Row—O. H. Wilson, John Sartore, Harry Bishop, Joe Sample, E. M. Anderson (sponsor), Reid McKinney, Jesse Wilson. Second Row—Ruth Fleischaker, Roberta Evans, Cheri Montgomery, Norma Wilson, Betty Cole, Rosemary Keenan, Dorothea Snodgrass. Third Row—Robert Shaw (president), Jane Williams, Mabel Miles, Marty Marsh, Frances Stephan, Patsy Bammann, Janna McEndree, Wilma Dains, Leona Meadows, Mary Ann Butler, Mary Ann Abbey. Fourth Row—LeRoy Everett, Ruth Bauersfeld, Claire Marsh, Janette Walker, Lola Millard, Wilma Rinehart, Beverly Cantrell, Roberta Bobbitt, Lela Sterling (secretary-treasurer), Eleanor Lewis, James Easter.

The meetings of the Charles W. Eliot Education Club are open to students and instructors interested in the teaching profession and the study of educational problems. However, membership is restricted to those students recommended by a committee which makes its selection on a basis of scholarship, future promise, and interest in teaching.

The Club has three definite purposes: (1) To afford opportunities for acquaintance among students and members of the educational faculty; (2) to help members learn of new developments in the field of education; (3) to give opportunity for social and cultural growth.

The Language and Literature Club is an organization composed of the majors and faculty members of the Language and Literature department. The club holds meetings each month with programs of interest to those majors and minors in English, foreign languages, journalism and speech. The last meeting of the spring semester is traditionally a dinner for all majors of the Language and Literature department.

Officers for 1950-1951 are Marjorie Wheatley, president; Carole Didier, vice-president; Gerald Gifford, secretary-treasurer; Dora Robertson, sponsor.

Language and Literature CLUB

Seated—Walter Pennington, Gerald Gifford, Marjorie Wheatley, Dora Robertson, Carole Didier, Dawn Tedlock, Lucy Pennington.

Second Row—Betty Leffler, Lillian Curry, Louise Curry, Jane Williams, Frances Call, Deloryse Hough, Eve Pitzer, Martha Lasley, Lynette Bowles, Jean McColley.

Third Row—Samuel Anderson, Eugene Degruson, Robertson Strawn, Ulf Ostergaard, Larry Tarbell, Rex Harrison, Don Madl, Helen Carney, Charles Corporon, Fay Douglas.



International RELATIONS Club

First Row—Larry Tarbell (secretary), Louise Elliff, Keitha Bohlander (president), Marilyn Mosier, Robert Hedgecock (treasurer), Elizabeth Cochran (sponsor). Second Row—Max Minor, Victor Lindeman, President Rees Hughes, Theodore Sperry, Leon Cole, Theodore Huffman, Marvin Gilbreath, Frank Powell, William B. Stewart. Shirley Barker, vice-president, was not present.



The primary aim of the International Relations Club is to stimulate public thinking in the realm of international understanding. Monthly forum meetings with persons vitally interested in foreign affairs or foreign students are conducted on some phase of international relations. The club sponsors an annual get-together with the foreign students on the campus.

Future Teachers of America is one of the

first national professional organizations a future teacher can belong to. By belonging to F.T.A., one is a member of the National Educational Association and the Kansas State Teachers Association and receives publications of these. Preparing more professionalized and better qualified teachers, and becoming socially acquainted with the faculty and other students are the primary aims of the organization.

Future TEACHERS



Seated—Sue Silman, J. Edgar Hallman, Nancy Anderson, Joe Sample, Roberta Evans, Elaine Duarte, Charlotte Douglass, Frances Seckman. Second Row—Wilma Duncan, Dorothea Snodgrass, Mary Ann Abbey, Elsie Dungan, Betty Williams, Jane Williams, Ruth Bauersfeld, Lucy Akins, Frances Stephan, Patsy Bammann, Pauline Bass, Perva Hughes, Janna McEndree, Ruth Fleischaker. Third Row—Harry Bishop, Harold Aldrich, O. H. Wilson, Robert Reavis, LeRoy Everett, Gwendel Nelson, Lola Millard, Wilma Da'ns, Thelma Wrestler, Esther Lee, Mary Ann Butler, Roberta Bobbitt, Ethel Peck.

Wesley FOUNDATION



First Row—Marilyn Mosier, Bonita Stuckey, Margaret Kelley, Elisabeth Phelps, Lois Parker, Lillian Curry, Sara Ann Archibald, Mickey McCoy.

Second Row—John Deardorff, Jim Ruggles, Martha Boulware, Nancy Anderson, Mariana Millsom, Bob Longstaff, Mrs. Wayne Dunlap, Paul Willis.

Third Row—William Harman, Russell Pegram, Bill Lothead, Tomas Edgar, Bill Stewart Bill Harriss, Rev. Wayne Dunlap, Jim Holman.

The Wesley Foundation, national Methodist student organization, was founded on the University of Illinois campus over 30 years ago. Since the establishment of the organization, it has become an important working body in the extra-curricular field on almost every state-supported college or university in the United States.

The purpose of the Wesley Foundation in Pittsburg is to plan a program specifically for and with the students of the college campus, but in the framework of the Christian concept of right behavior and the increasing insight into the will of God.

The program and activities are planned on yearly retreats by the student cabinet. The program includes such things as student-led

panel discussions, speakers, special devotional and inspirational services, films, participation in campus services, outings and social functions.

The local Wesley Foundation is affiliated with the Methodist Student Movement on other campuses of this state. The doors of the Pittsburg Wesley Foundation are always open to all Christian students on the campus.

Cabinet

Bill Harriss, Elsabeth Phelps, Margaret Kelley, Rev. Wayne Dunlap, Mariana Millsom, Bob Longstaff, Lillian Curry, Paul Willis, Sara Ann Archibald, Bill Harman, Russell Pegram.



Biology CLUB



First Row—Prof. George E. Ruggles, Dr. Claude Leist, Richard Joseph, Donna Alderman, William Stewart, Charles Clark, Perry Page, Carol Dunshee, Dr. Alice Elliott, Dr. Theodore M. Sperry.

Second Row—Dr. Gladys Galligar, Angelo Barone, Carlyle Dunshee, Robert Holland, Woodrow Holland, Fred Featherstone, Paul Willis, Dale Felty, Arthur Corporlongo.

Third Row—Dr. J. R. Wells, William Fish, James Ruggles, Niles Stockinger, Guinn Shannon, Merlin Kirby, John Corporlongo, John Ward, Robert Schnackenberg.

The Biology Club of today began as an Agriculture Club in 1912. During the intervening years it was called variously the Carroll Medic Club, Lambda Sigma Kappa, and finally the Biology Club, thereby reflecting the changing ideas and interests of the majority of its members as well as changing conditions within the department. The membership of the club is, and has long been, composed mainly of pre-professionals, especially premedical and pre dental students.

Regular meetings are held bi-monthly, at which topics of interest are presented by various physicians, dentists, veterinarians, educators, and other especially qualified persons. A few of the meetings are social. Of these the annual Christmas party and the spring picnic are outstanding.

Dames CLUB



Seated—Jean Jones, Lou Kirby, Georgia Frazell, Helen Woodall.

First Row—Marjorie Knuth, June Self, Betsy Drake, Kathryn Smith, Betty Lyerla, Martha Johnson, Elaine Miles, Doris Winchell, Mae Spicer, Pruella Munz, Jean Gable.

Second Row—Maxine Schoenig, Ruth Williams, Jeannine Norris, Marilyn Walton, Wanita Hopkins, Betty Doll, Beverly Craven, Norma Swank.

Autographs



Cooperative Planning

Burger Baird's planning with close cooperation with the 1951 Kanza staff has brought the Kanza to the Pitt campus in three timely sections packed full of memories of your college life and your college friends. You too can profit with Burger-Baird's helpful cooperation and rapid service.

PORTER LIBRARY

BURGER-BAIRD ENGRAVING CO.

GRAPHIC ARTS BUILDING . . . KANSAS CITY 6, MISSOURI