

the following specimens
for the Museum collection

① Notropis bellare

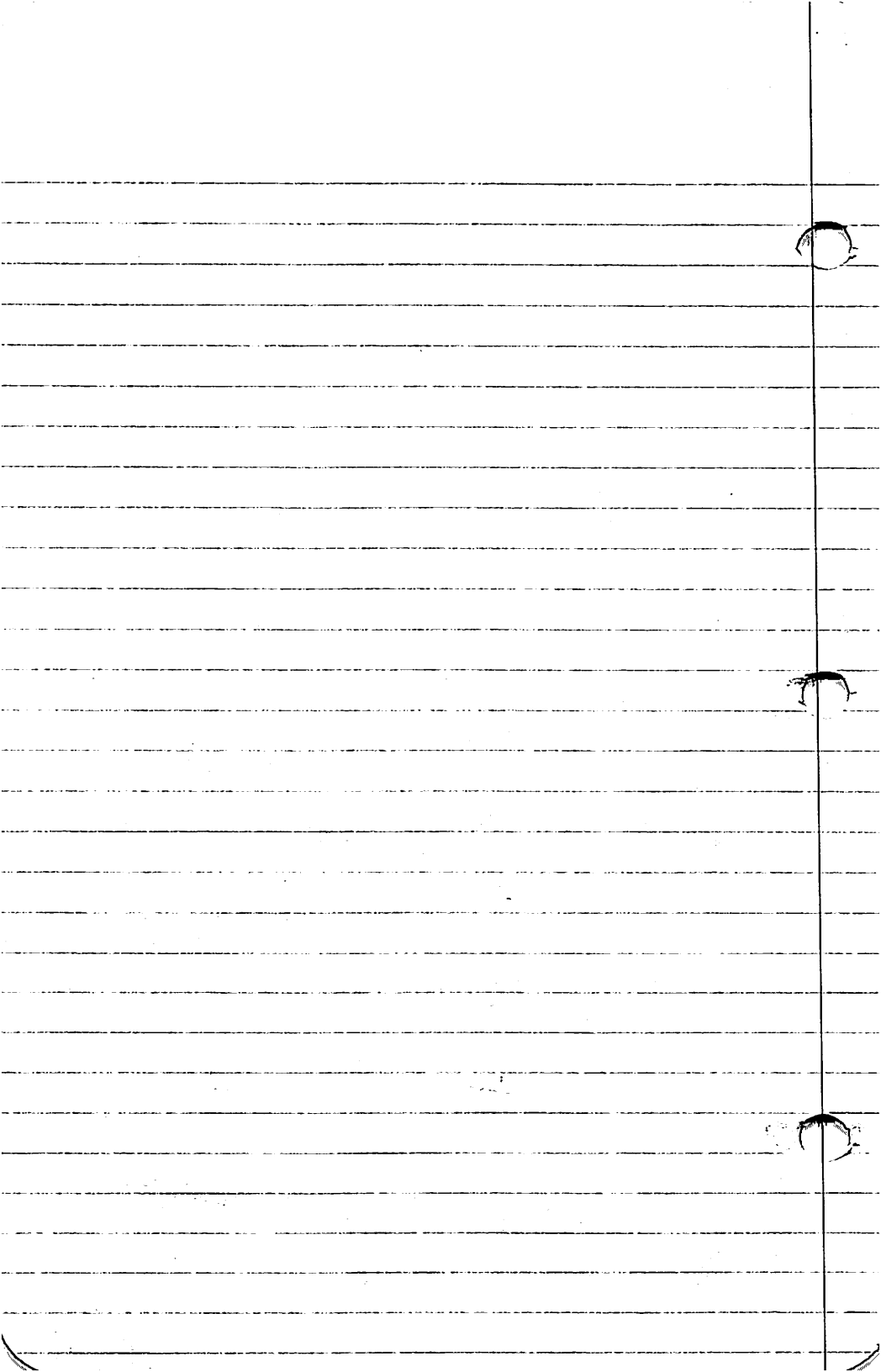
The following specimens
are misidentified

X Etheostoma caeruleum
is E. spectabile

X Etheostoma flabellare
is E. spectabile

X Etheostoma chlorosomum
is E. gracile

Jeff Luttrell



Petromyzontidae

Ichthyomyzon castaneus Co Collector

Lepisosteidae

Lepisosteus osseus Co Collector

Lepisosteus oculatus

Clupeidae

Dorsoma cepedianum

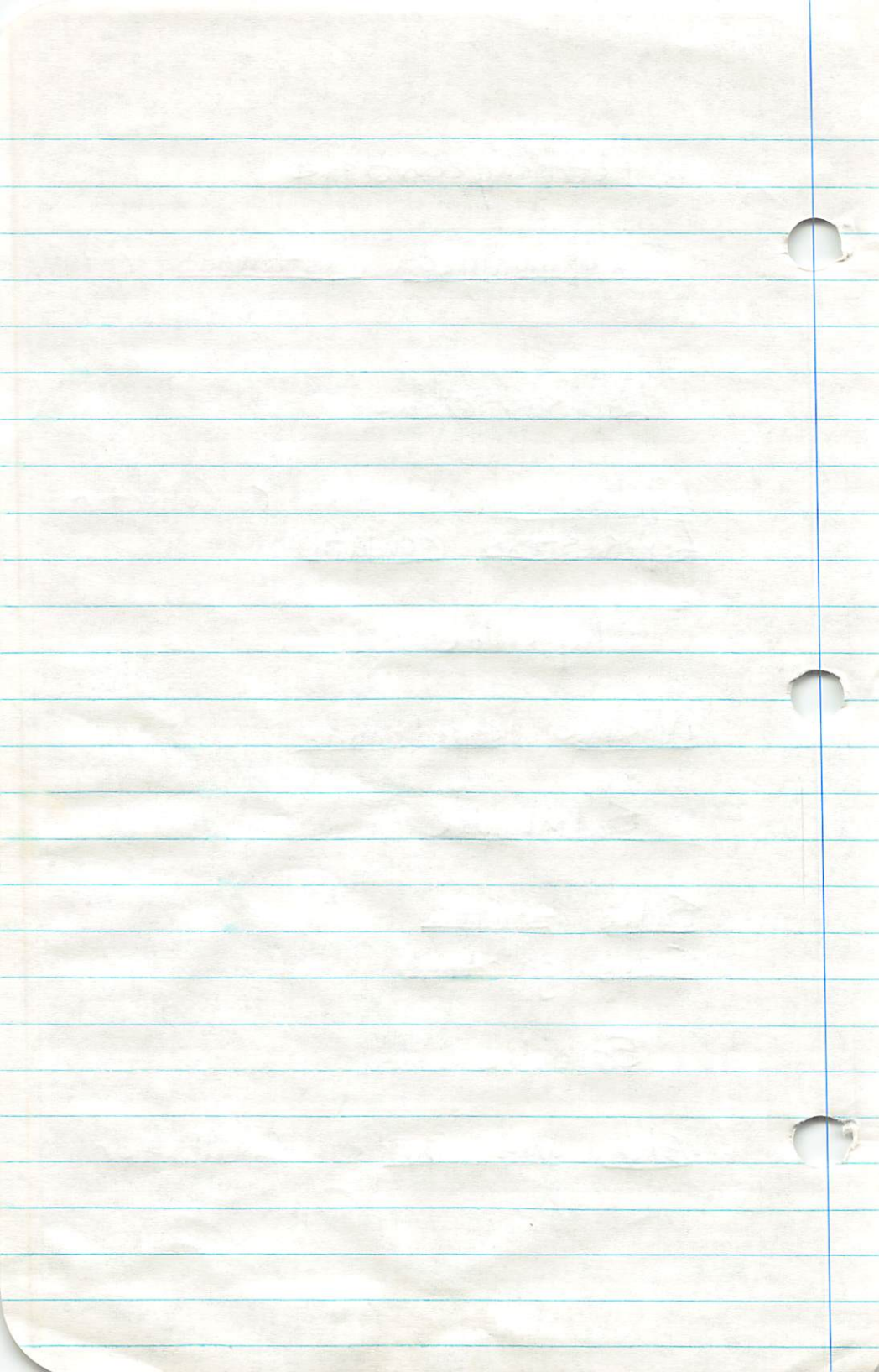
Salmonidae

Salmo trutta

Salmo gairdneri

Esocidae

Esox americanus Co Collector



Cyprinidae

Carassius auratus

Ctenopharyngodon idella

Notemigonus crysoleucas

Phoxinus phoxinus

Pimephales vigilax

Pimephales tenellus Co Collector

Pimephales notatus

Pimephales promelas

Noemius apterus Co Collector

Hybopsis amblops

Campostoma anomalum

Campostoma oligolepis

Semotilus atromaculatus

Notropis rubila

Notropis umbrotilis

Notropis lutrensis

Notropis galacturus

Notropis rubellus

Notropis umbrotilis

Notropis telescopus

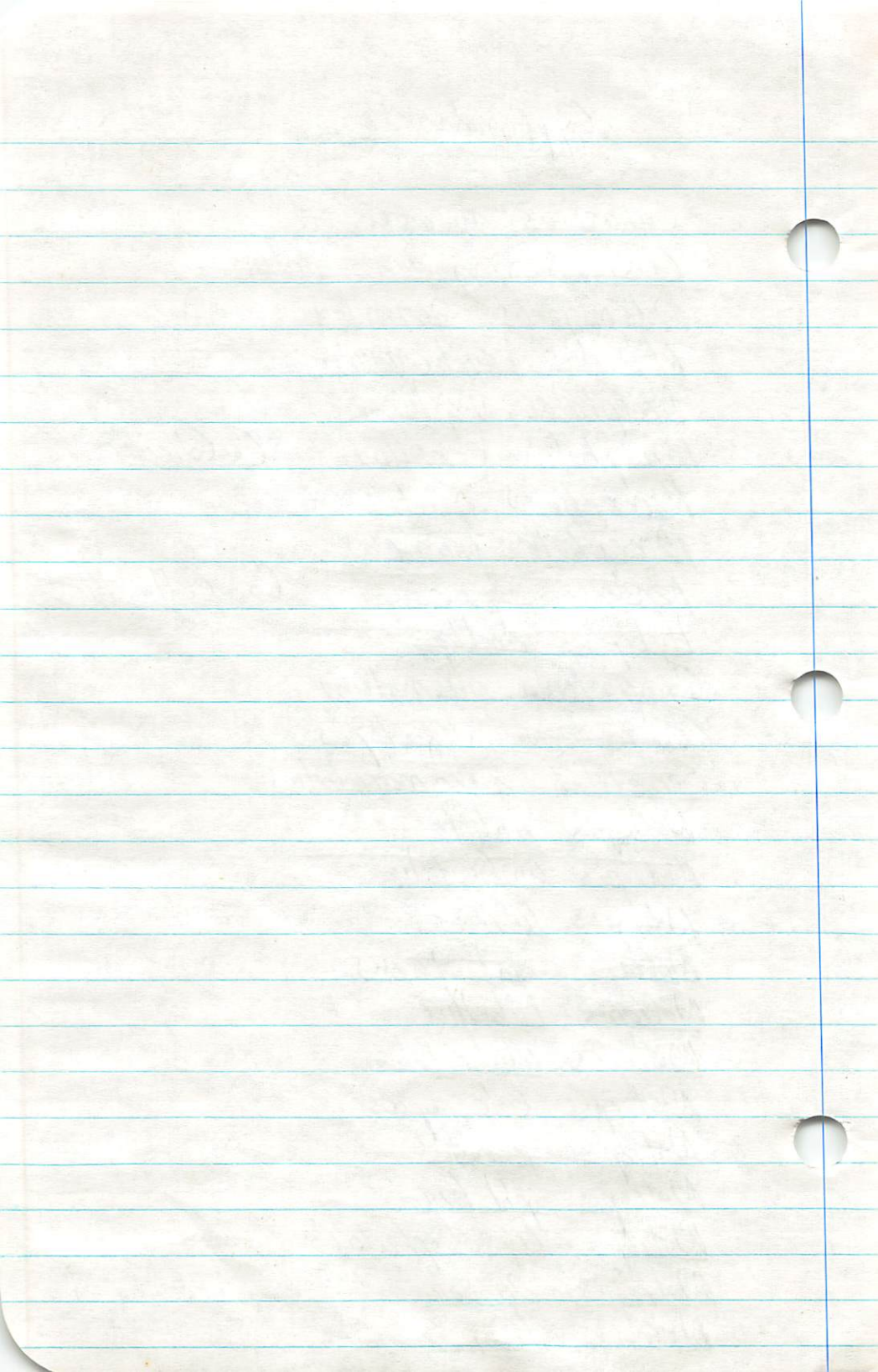
Notropis zonatus

Notropis pilosus

Notropis cyanocephalus

Notropis discalis

Notropis boops



Catostomidae

Hypentelium nigricans

Moxostoma duquesnei

Catostomus commersoni

Ictaluridae

Ictalurus punctatus

Ictalurus natalis

Ictalurus melas

Ambloplites olivaris

Noturus exilis

Noturus albatar Co Collector

Cyprinodontidae

Fundulus notatus

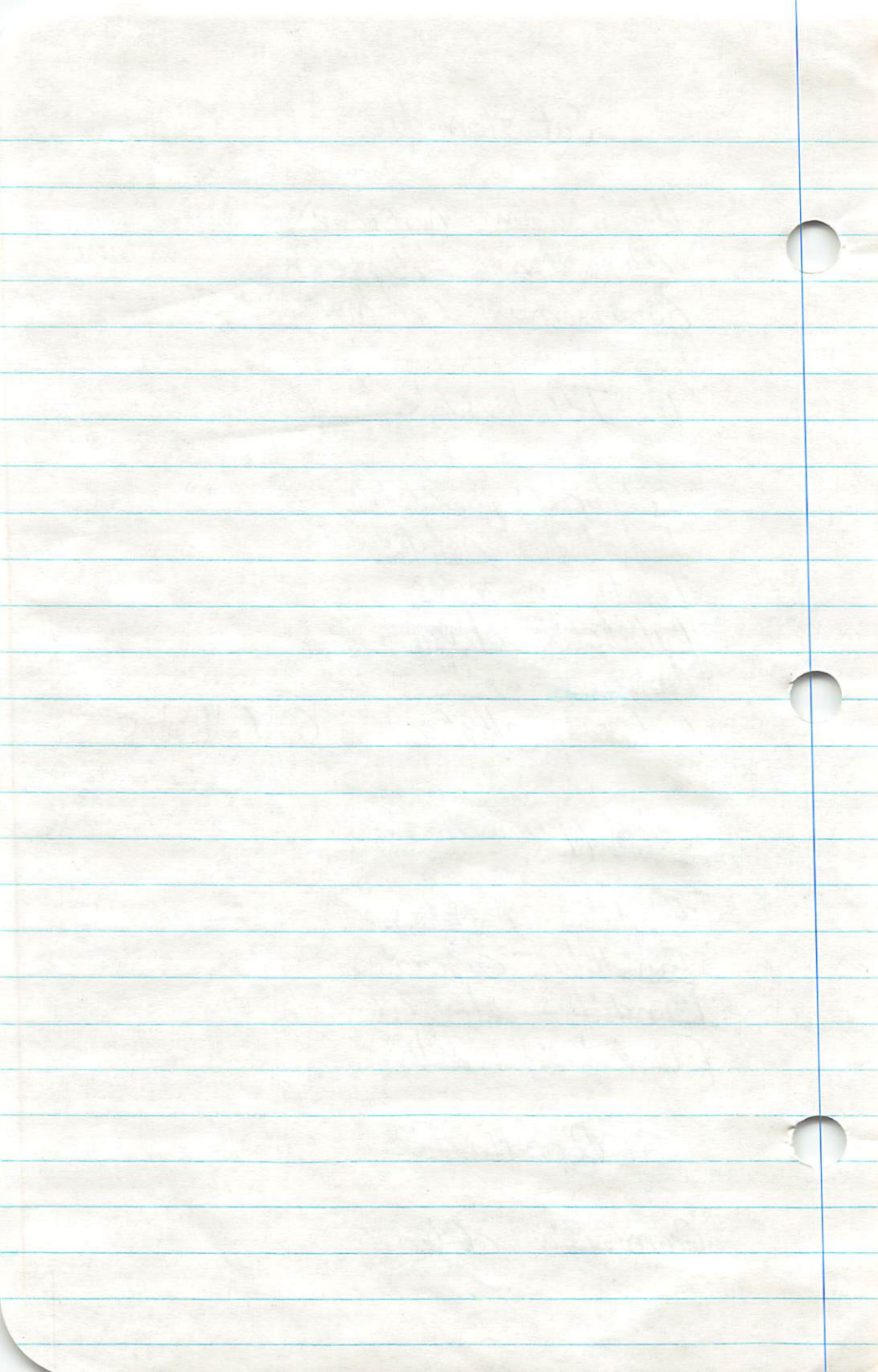
Fundulus catenatus

Fundulus olivaceus

Fundulus similis

Poeciliidae

Gambusia affinis



Atherinidae

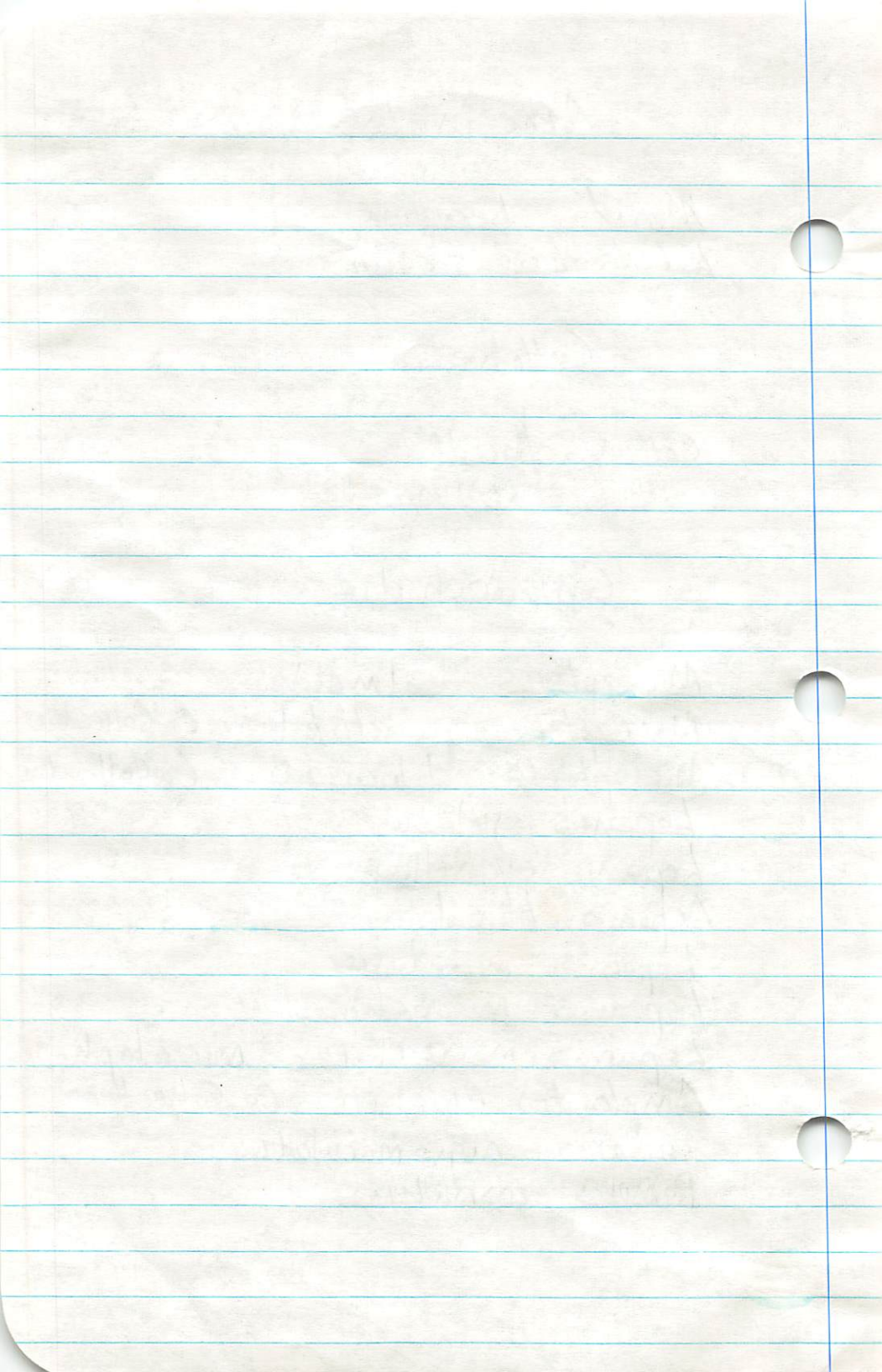
Menidia beryllina
Labidesthes sicculus

Cottidae

Cottus bairdi
Cottus carolinæ

Centrarchidae

Micropterus salmoides
Micropterus punctulatus Co Collector
Micropterus dolomieu Co Collector
Lepomis gulosus
Lepomis cyanellus
Lepomis humilis
Lepomis megalotis
Lepomis microchirus
Lepomis microchilus - microlophus
Ambloplites rupestris Co Collector
Pomoxis nigromaculatus
Pomoxis annularis



Percidae

Stizostedion vitreum

Percina caprodes

Etheostoma nigrum

Etheostoma diloresomum

Etheostoma stigmaeum

Etheostoma blennioides Co Collector

Etheostoma tetrazonum

Etheostomaizonum Co Collector

Etheostoma zonale

Etheostoma whipplei

Etheostoma flabellare

Etheostoma punctulatum Co Collector

Etheostoma caeruleum

Etheostoma caeruleum

Etheostoma spectabile

Etheostoma microperca

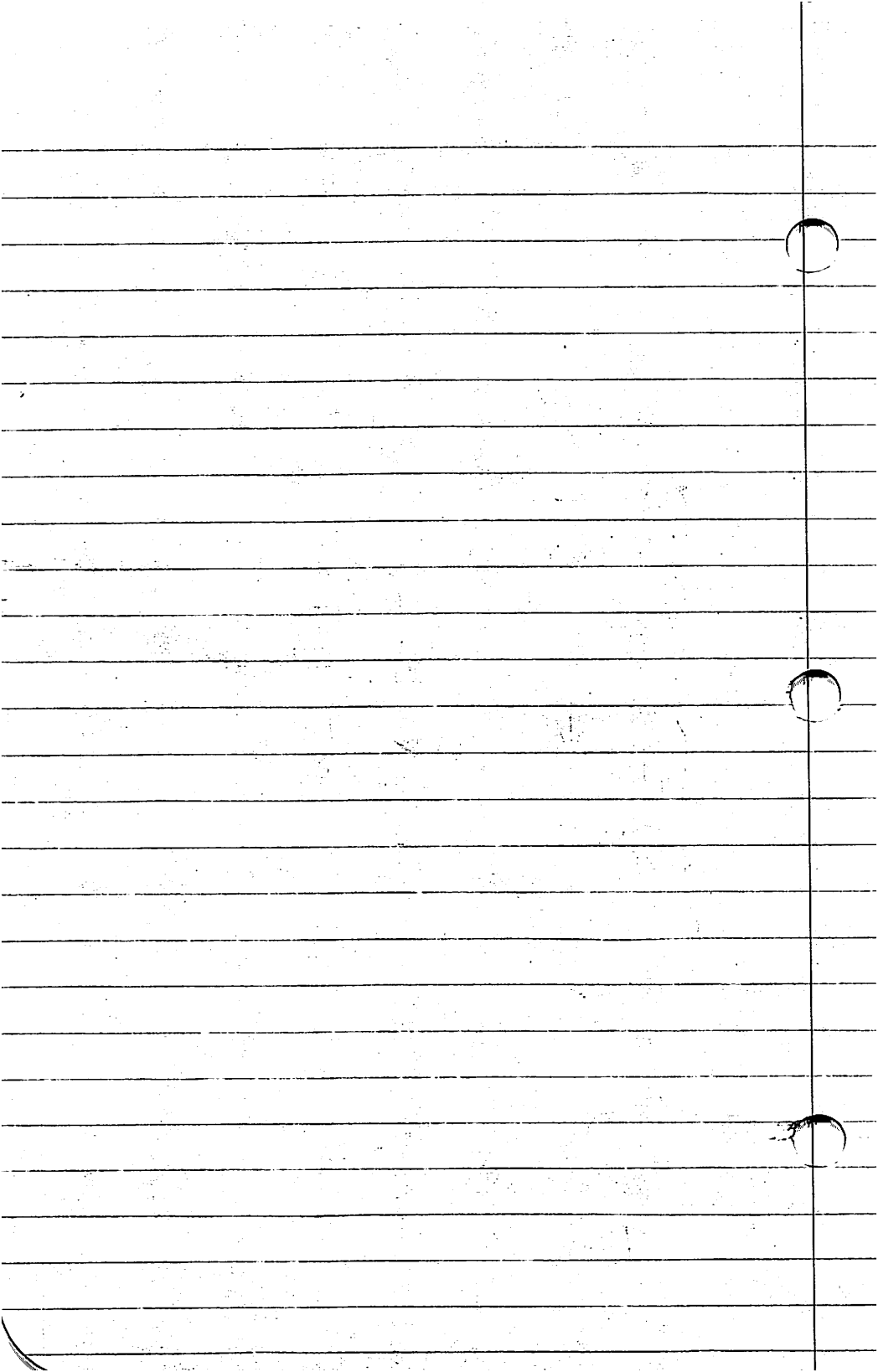
Sciaenidae

Aplodinotus grunniens

Micropogonias undulatus

Blenniidae

Blennius cristatus

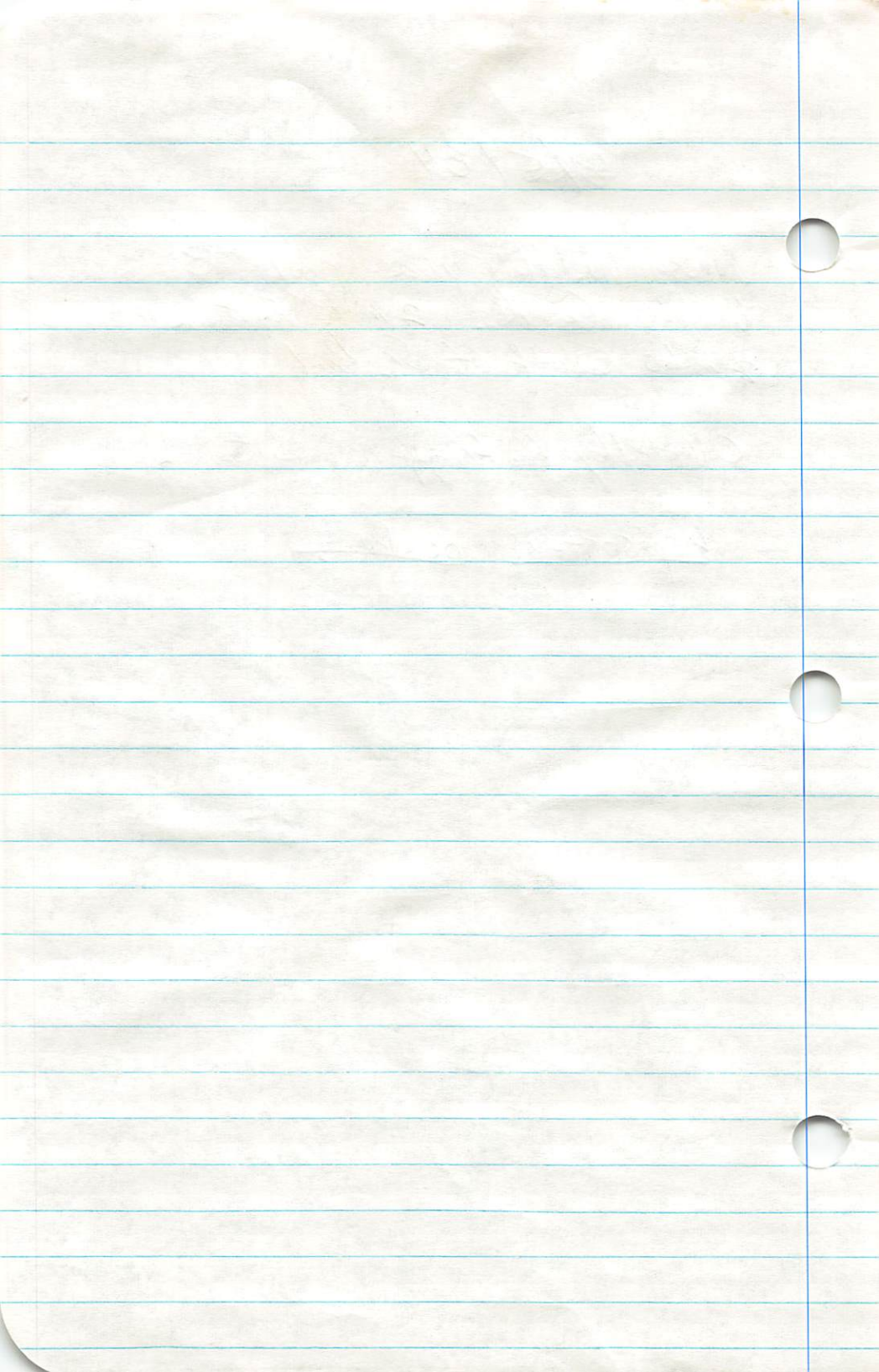


8/5/84

Neosho Wildlife Area pool #3
Woods Co. Ks 2 miles East and
2 miles South of St. Paul

Collected by R. Kriggers, D. Smith

Lepisosteus oculatus

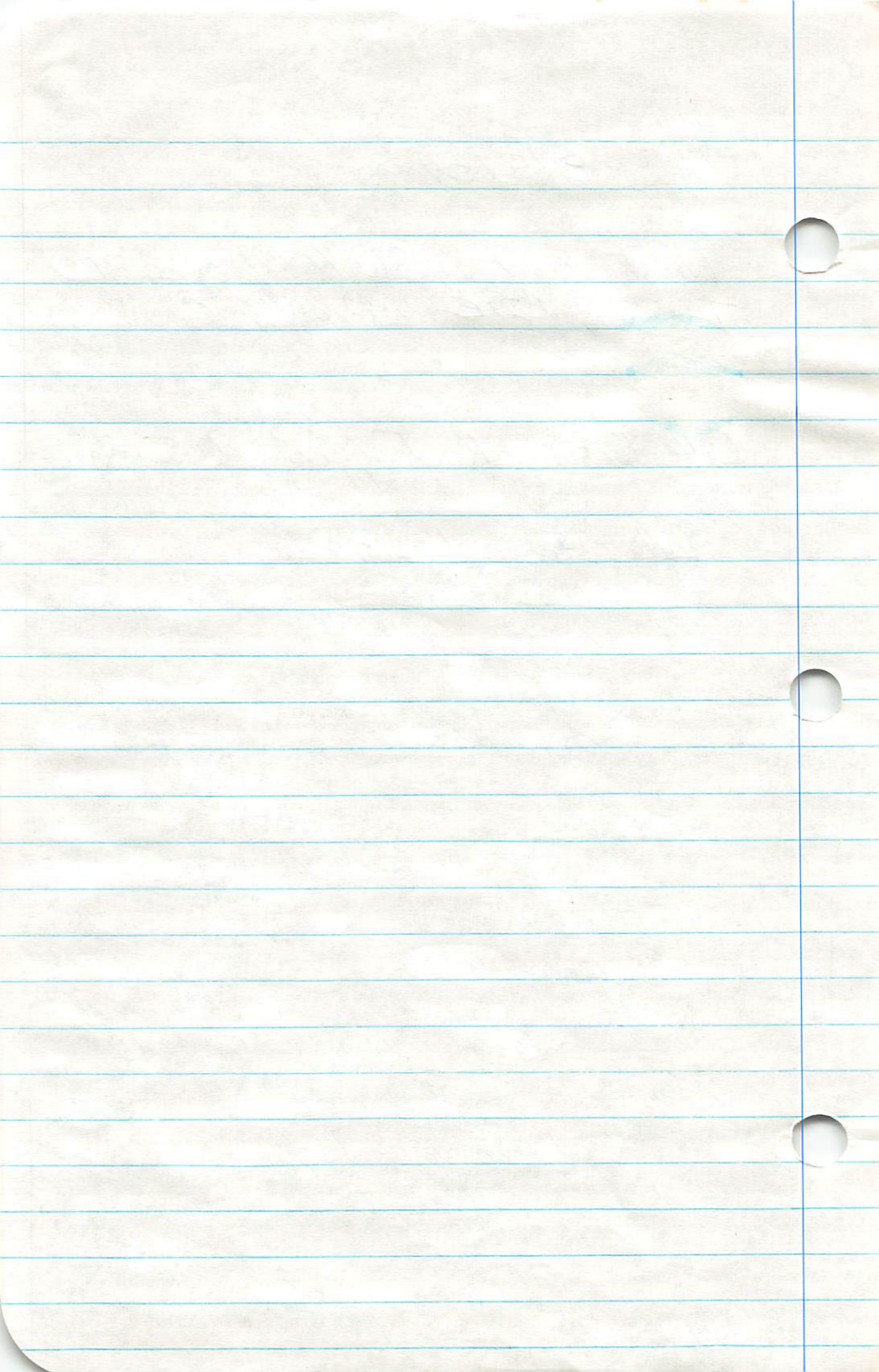


8/5/84

Neosho River SW 1/4 of sec. 31
T29S, R21E Neosho Co.
Kan 545

Collectors R. Figgieri, D Smith

Rhyodictis olivaris



2/23/86

Location: Second Cow Creek
Crawford County Kansas
S.E. $\frac{1}{4}$ of S.E. $\frac{1}{4}$ of Section 9
T 29S, R 23E

Water Temp. est. 46° F.

Air Temp. - est. 50° F.

Taken upstream from bridge
for approximately 200 m.

Stream characteristics

Low Water levels

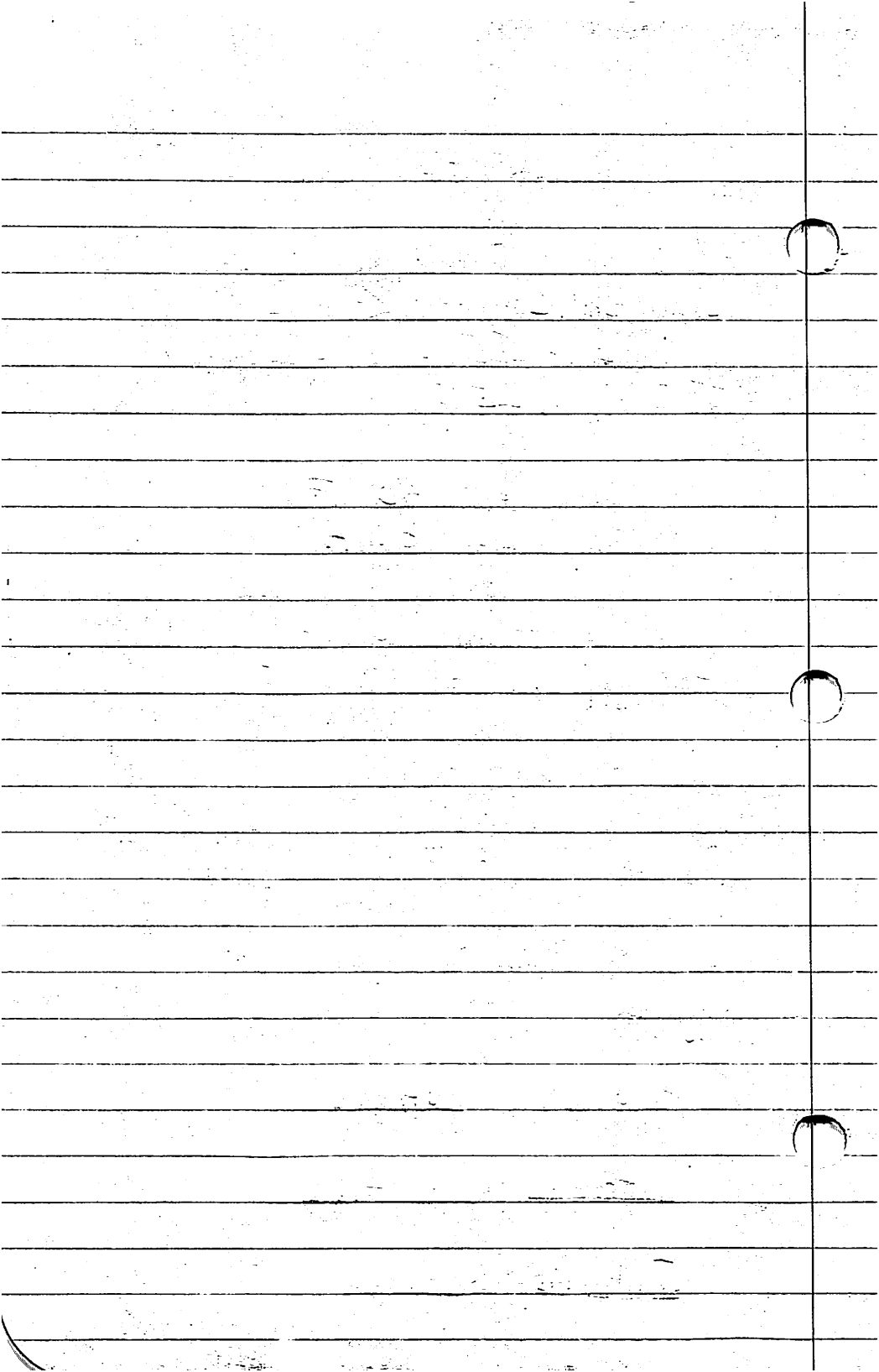
Shallow rocky riffles and pools

Collectors John Ballin and Craig
Kasjaka

Pimephales notatus

Notropis umbratilis

Fundulus notatus

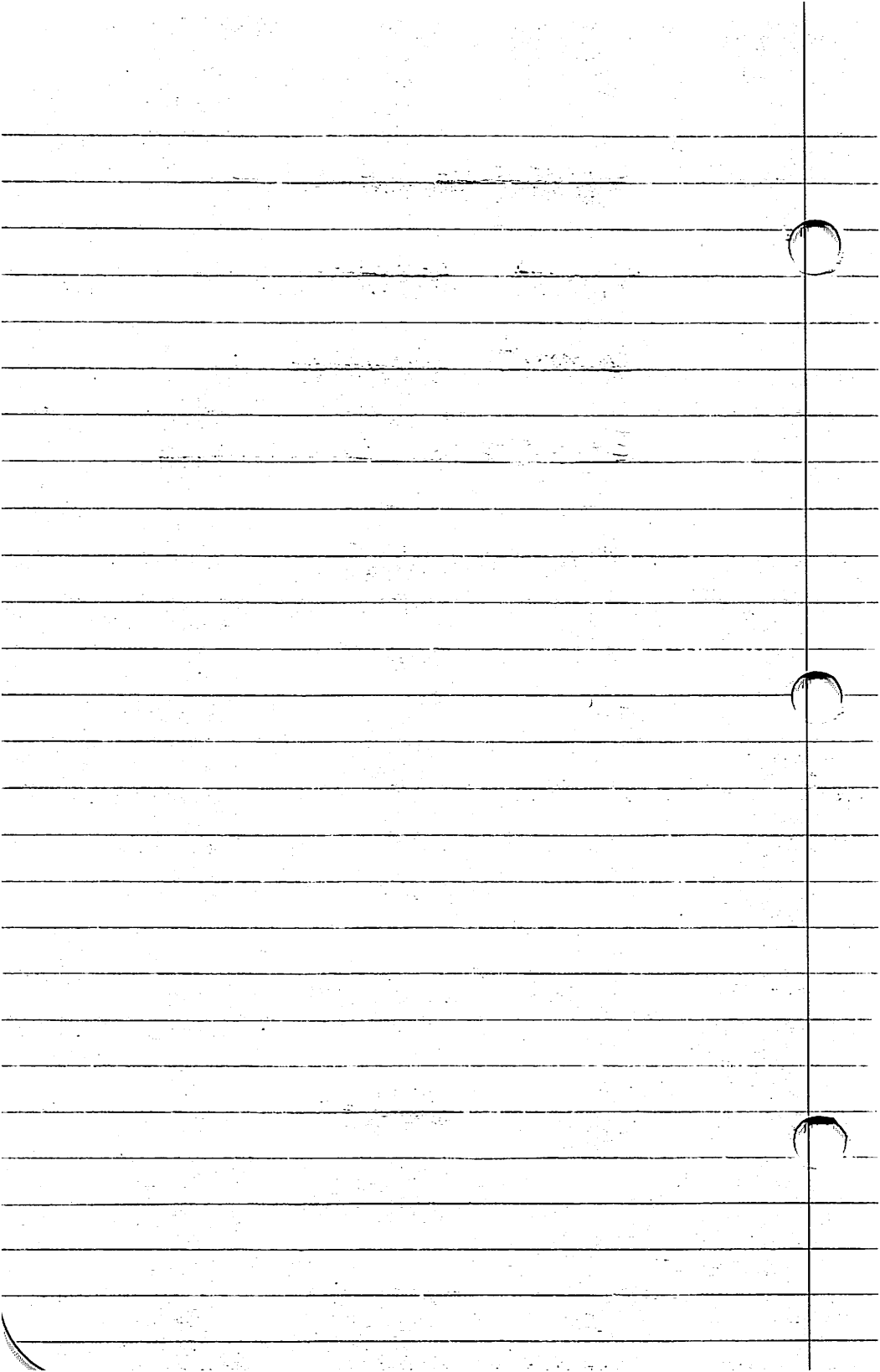


Labidesthes sicculus

Lepomis humilis

Promoxis annularis

Etheostoma chlorosomum



3/1/86

Location: Five mile Creek
Ottawa County Oklahoma
NE 1/4 of Section 22, R. 25E,
T 29N

air temp. est. 60° F
water temp. est. 15° F

Taken by seine and habitat net
upstream from bridge 1/4 mile

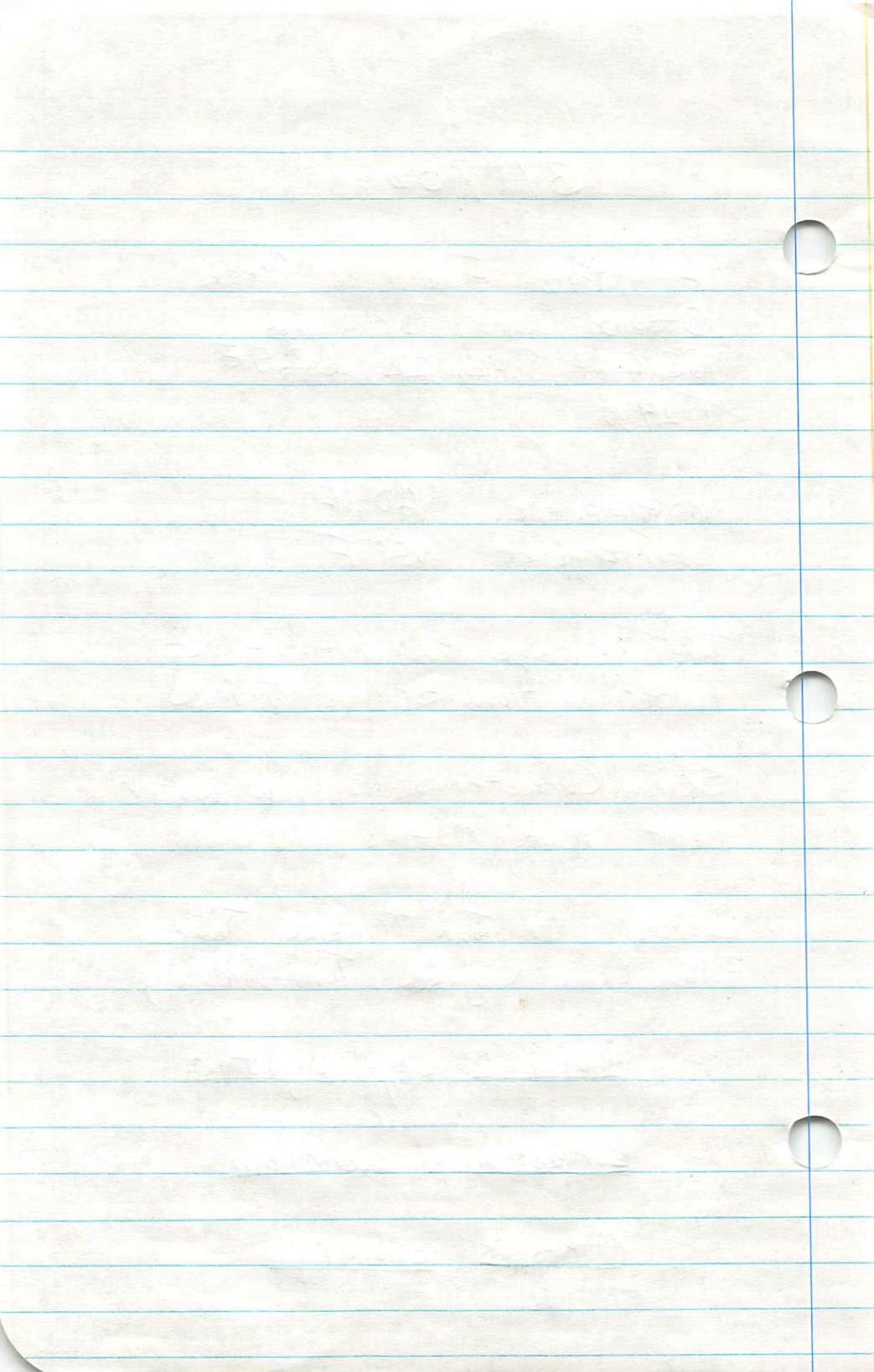
Stream Characteristics; low water
clear rocky riffles and pools

Collectors; Dr. J.R. Triplett, John
Bollin, Craig Kasjka, Tom Silovsky

Phoxinus erythrogaster

Campostoma anomalum

Nothopsis pilsbryi

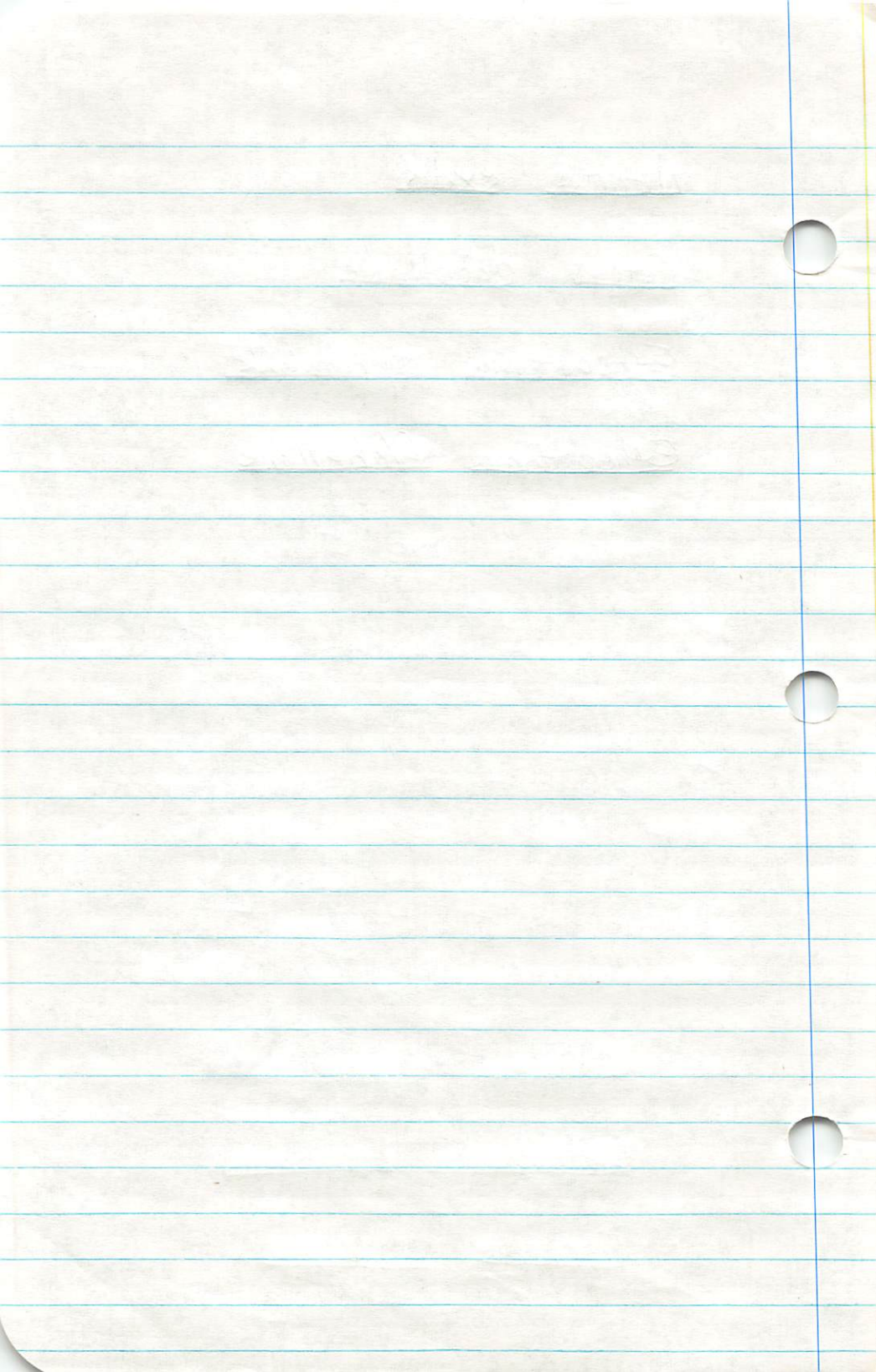


Noturus exilis

Cottus carolinæ

Etheostoma spectabile

Etheostoma flabellare

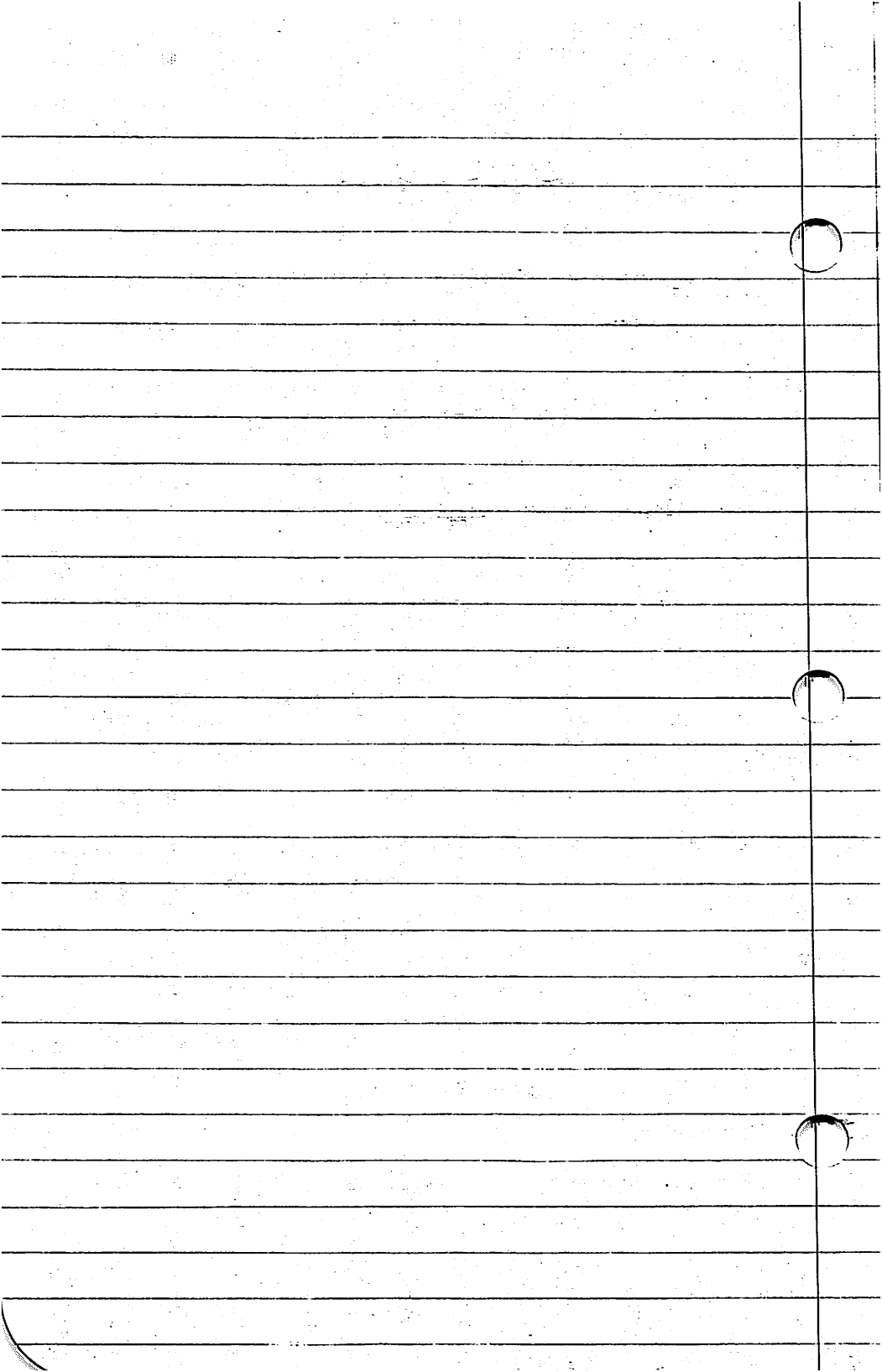


3/12/86

Laguna Madre, South Padre Island
Blanco Co. Texas

Collectors Ichthyology Class

Fundulus similis



3/12/86

Location: Plum Creek 2 1/4 from
U.S. 73 on Leavenworth Co. Road 18
Leavenworth County Kansas

air temp. 55°F

water temp. 45°F

Taken by seine west of bridge

Stream Characteristics: low water
murky pools, back waters, and
shallow riffles.

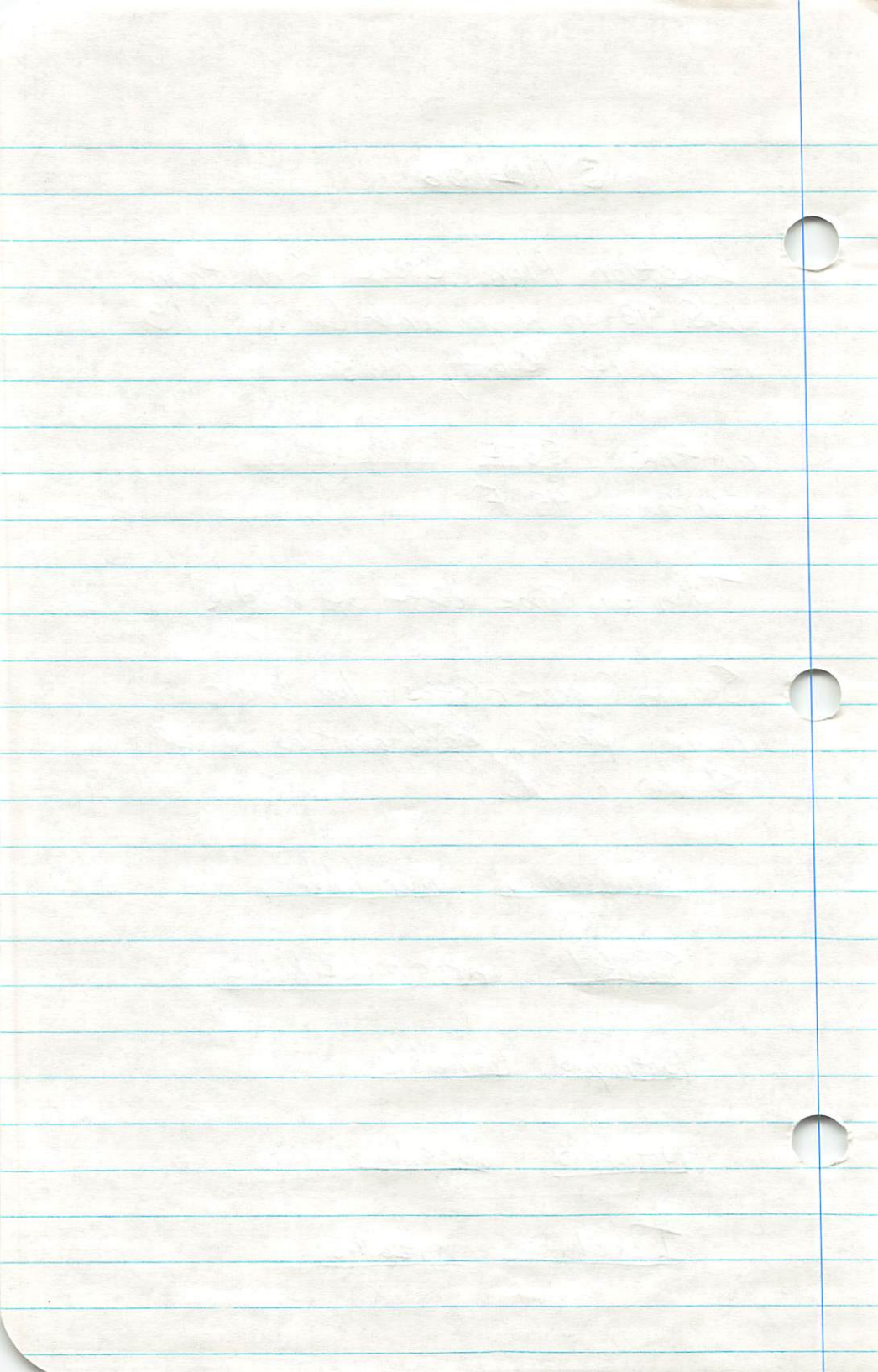
Phenacobius mirabilis

Semotilus atromaculatus

Notropis lutrensis

Notropis dorsalis

Ictalurus natalis



3/13/86

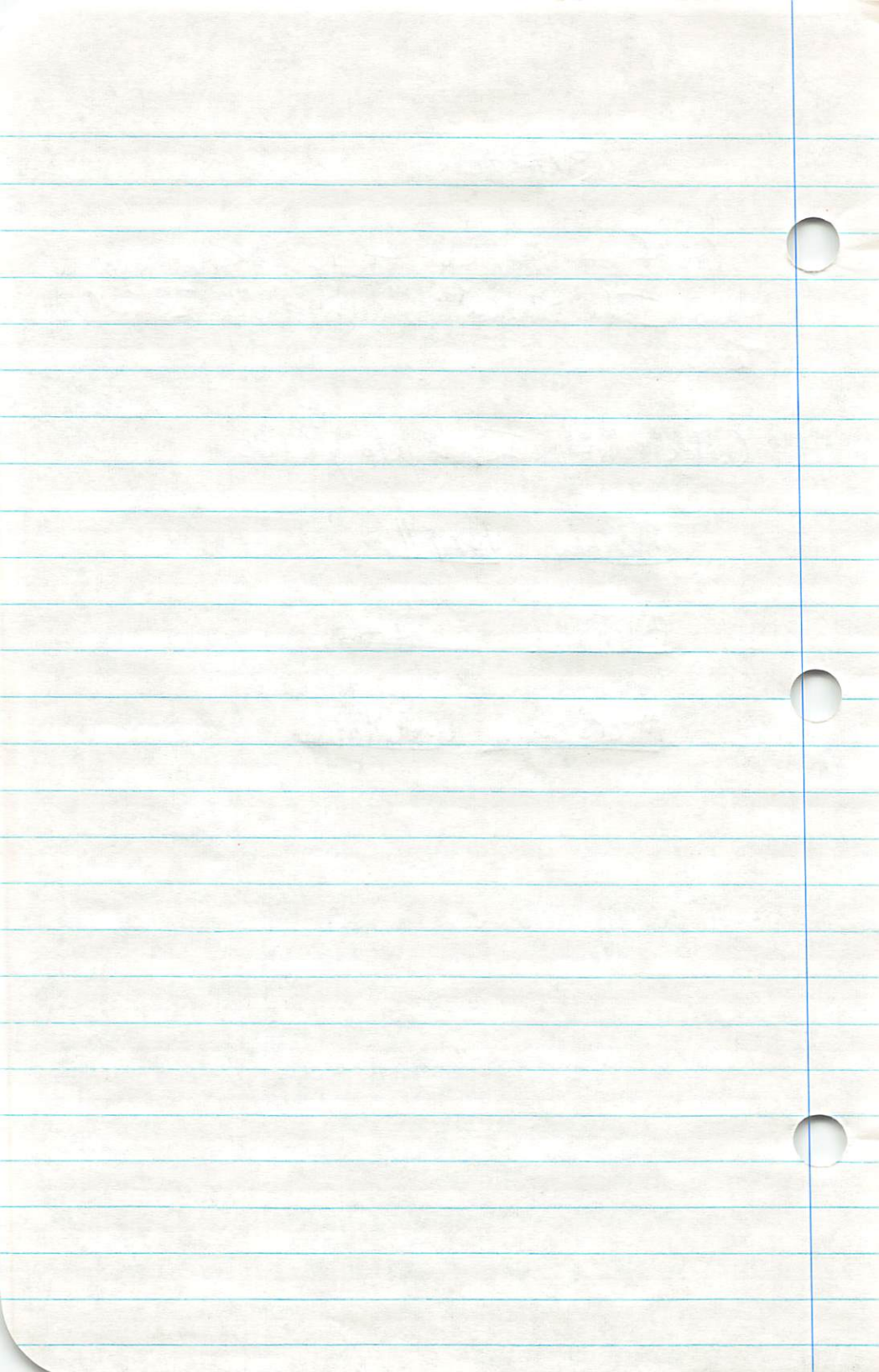
Gulf of Mexico Jeffries, Santiago
Pass Isla Blanca Co. South Padre Island
Texas

Collected by Ichthyology Class

Menidia beryllina

Blennius crinotatus

Microgobius undulatus

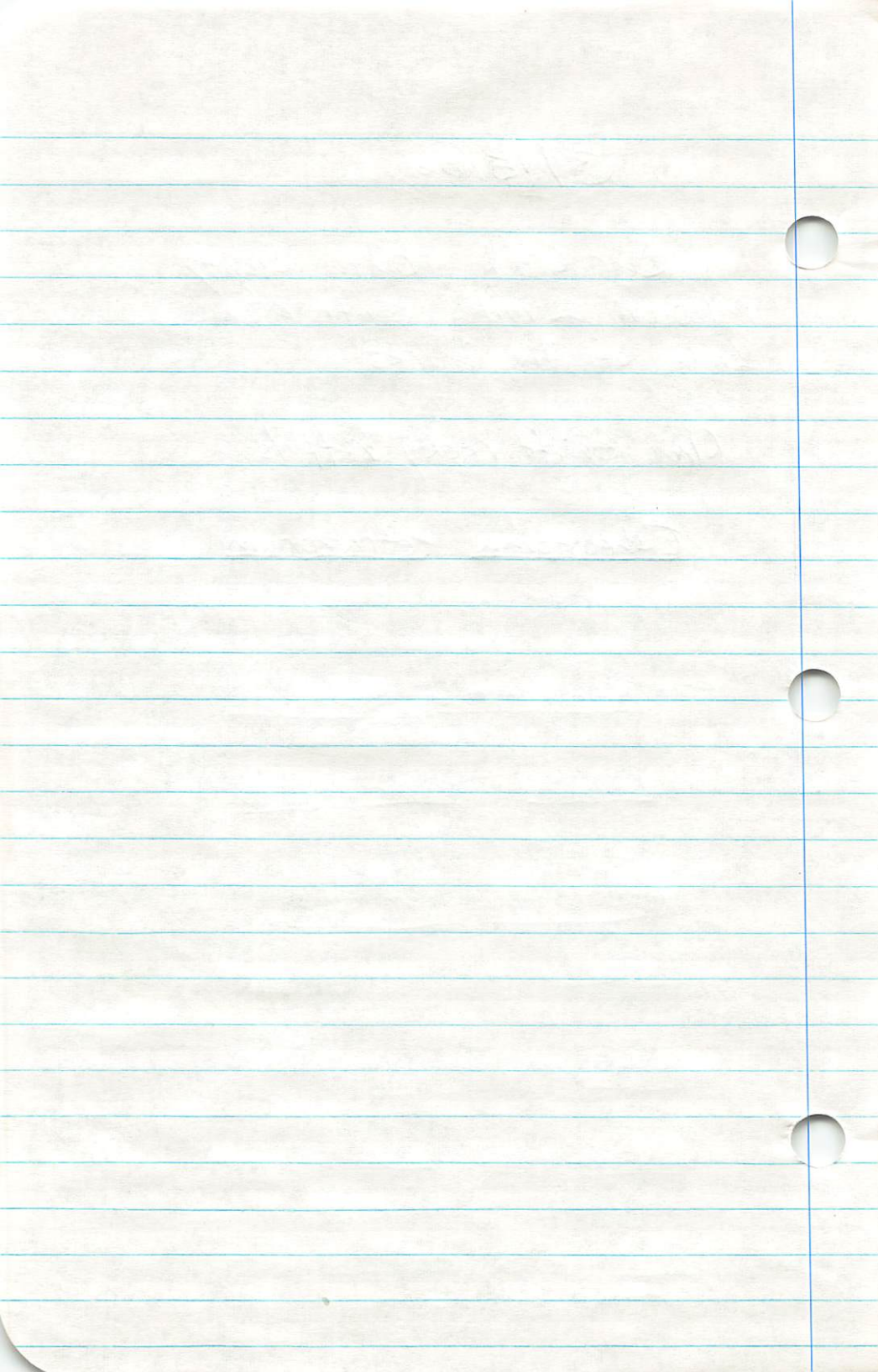


3/15/86

Deer Creek Benton County
Missouri 2 miles south of
Lake of the Ozarks

Clear swift rocky riffles

Etheostoma tetrazonum

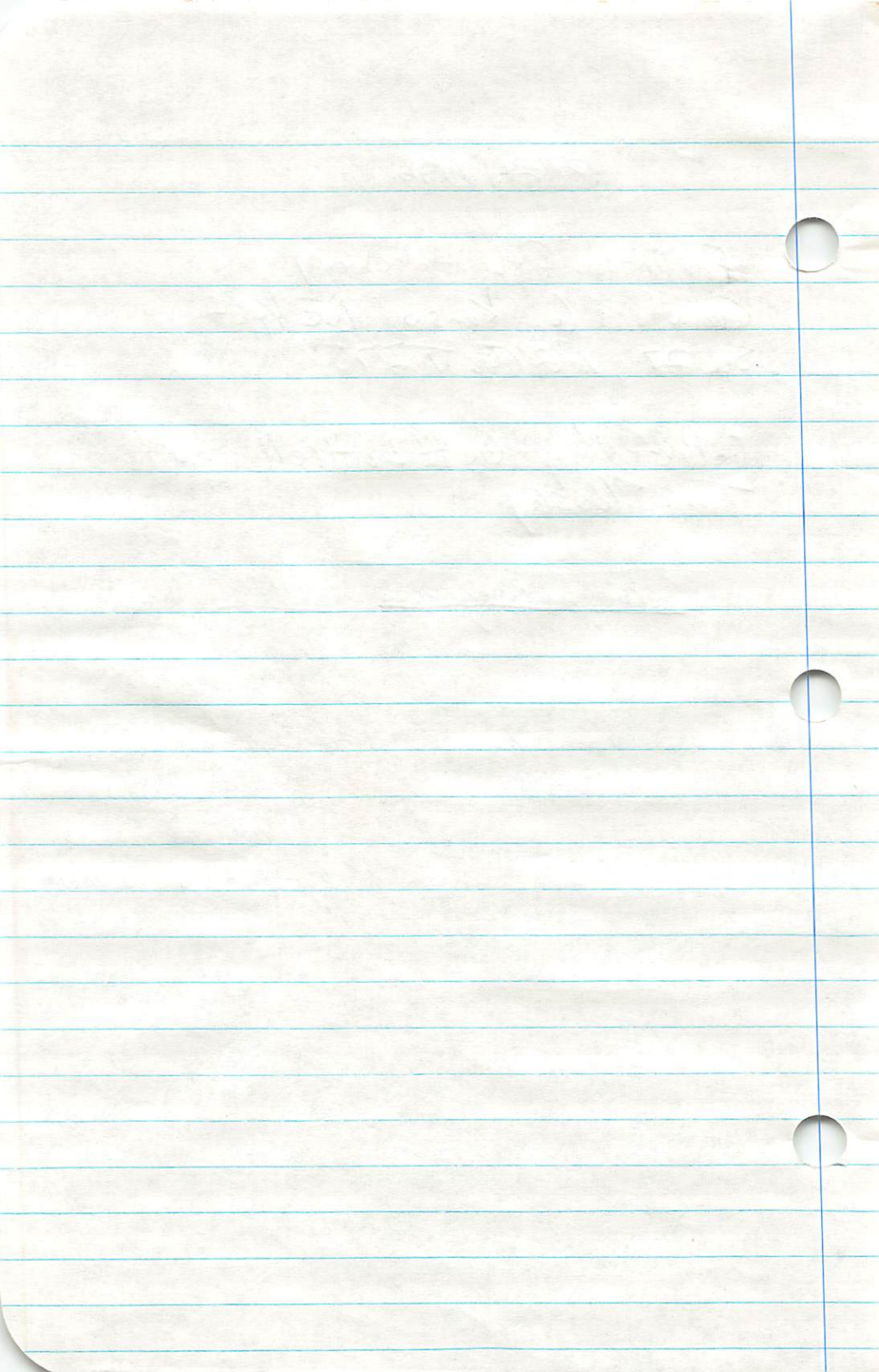


3/24/86

Farlington Fish Hatchery
Crawford Co. Kansas NE 1/4 of
Sec 27, R24E, T27S

Collected by - Geoff Lenthell and
Tom Silovsky

Genopharyngodon idella



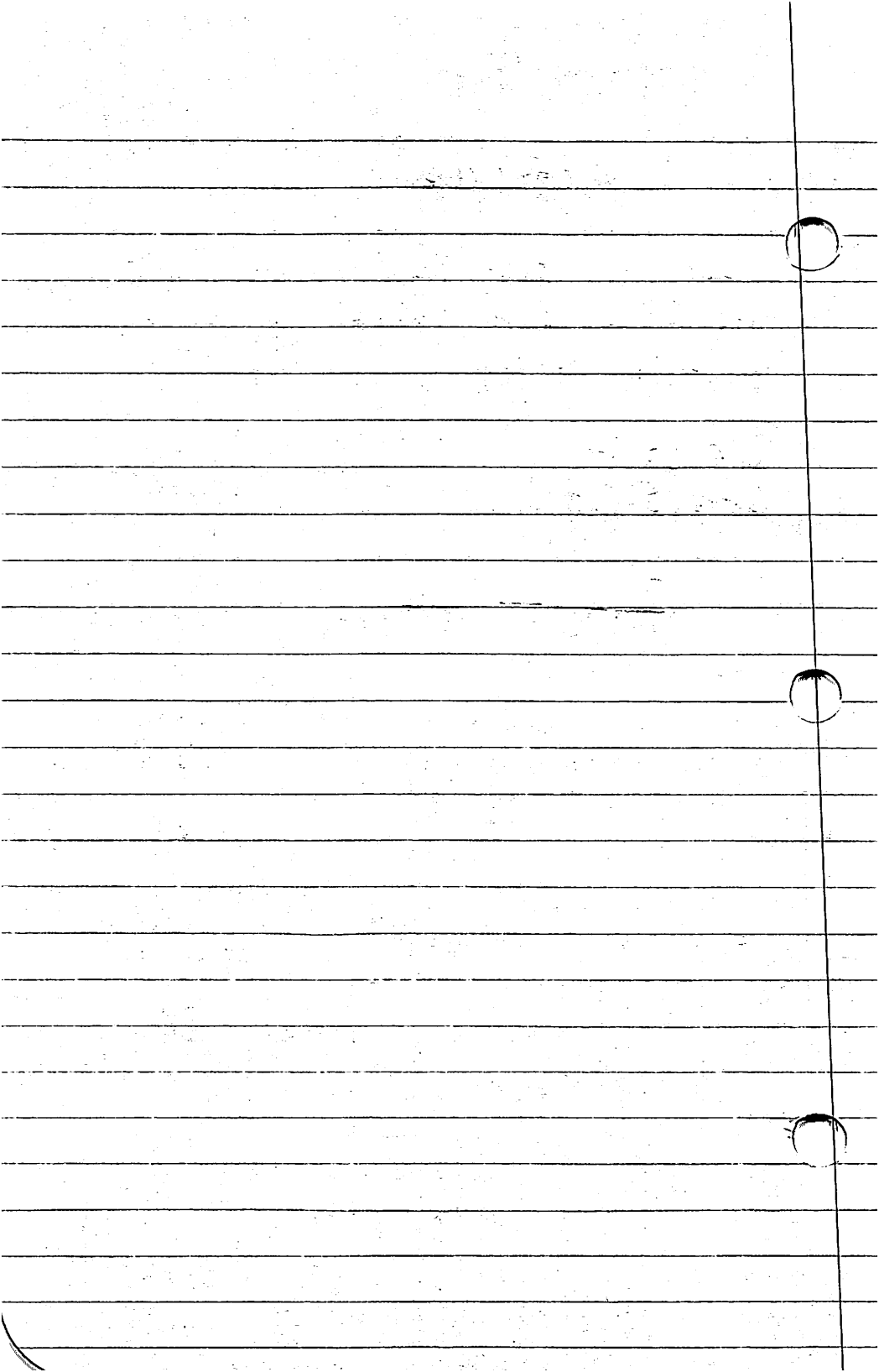
3/29/86

Location: Farm Pond 3 miles off
U.S. 73 on Leavenworth Co. 18 Leaven-
worth Co. Kansas.

air 65°F

Water 50°F

Ictalurus melas



3/29/86

Missouri River Backwater Slough
1/2 mile North of Atchison/Leavenworth
County lines.

air: 65°F

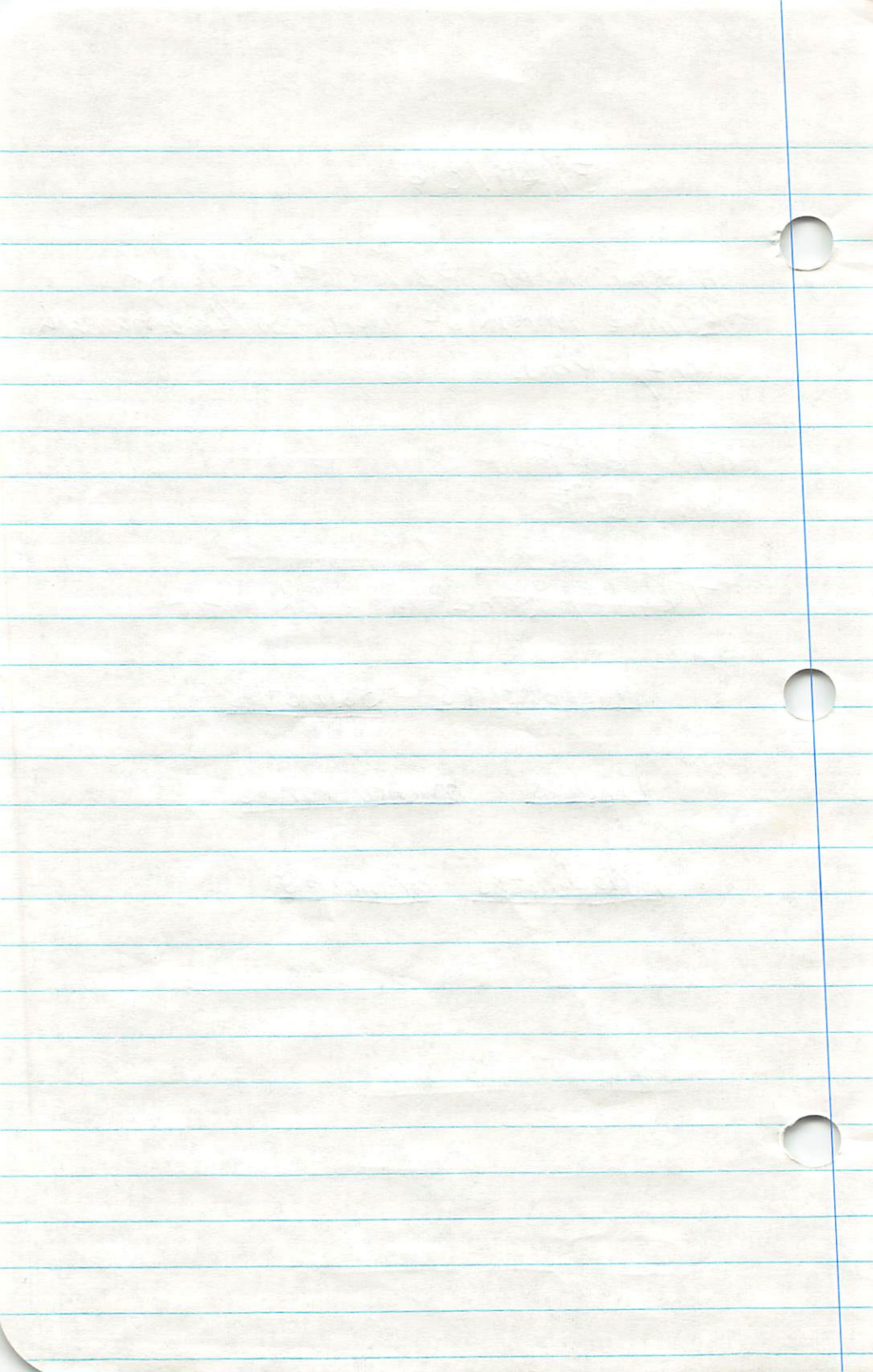
water 50°F

Taken by seine in backwater.

Micropterus salmoides

Lepomis macrochirus

Aplodinotus grunniens



4/10/86

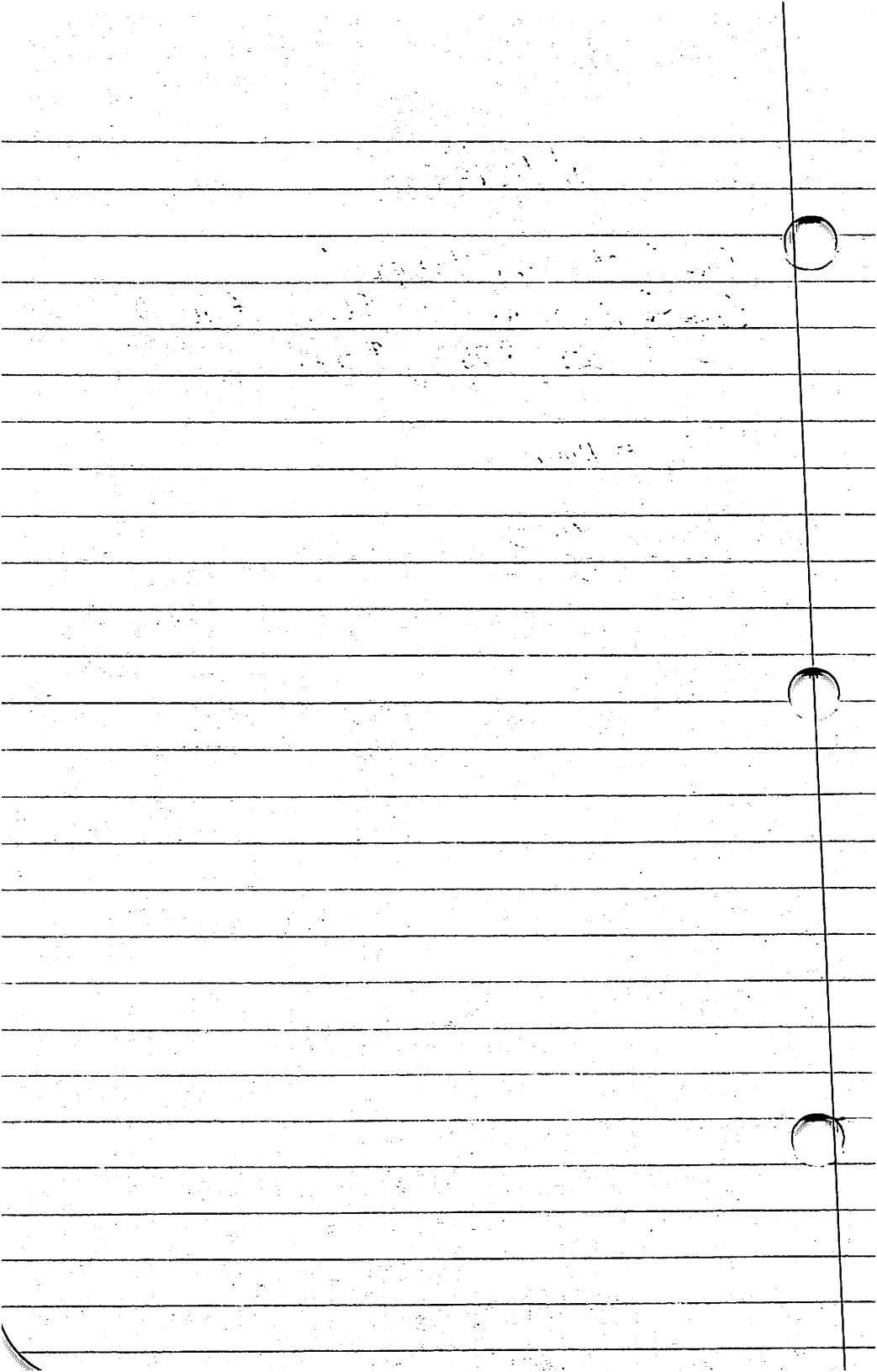
Cow Creek Overflow pond
Crawford Co. Kansas SW $\frac{1}{4}$, of SW $\frac{1}{4}$
of Sec. 27, R 25E, T 30S

Clay bottom

Water 60°F

air 70°F

Notemigonus crysoleucas



4/19/86

Arkansas River at Van Buren City
Parks Van Buren Arkansas Polk Co.

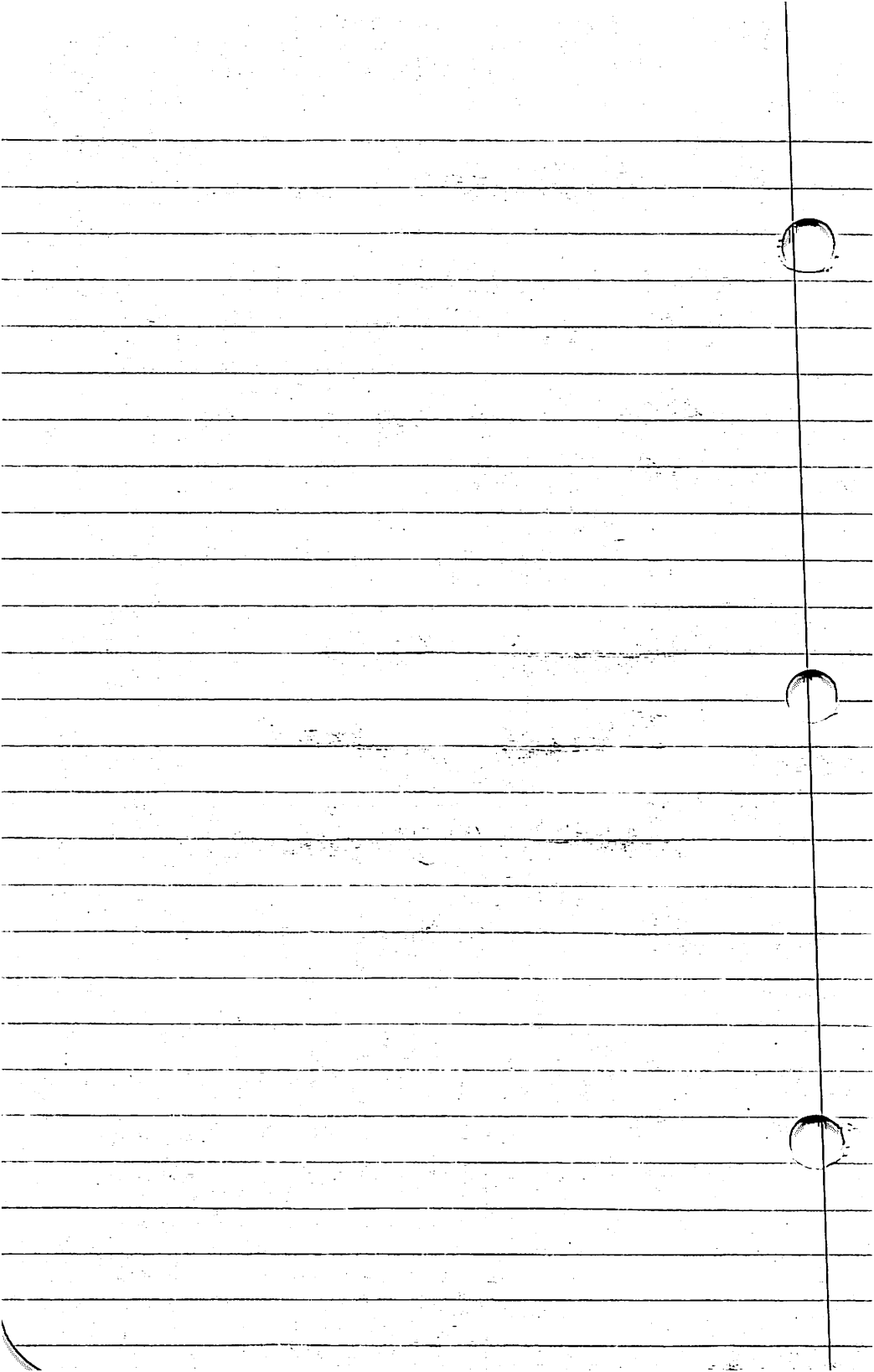
Air and water temp. est 60° for
both and raining

Collected by Ichthyology Class

Pimephales vigilax

Tetodon punctatus

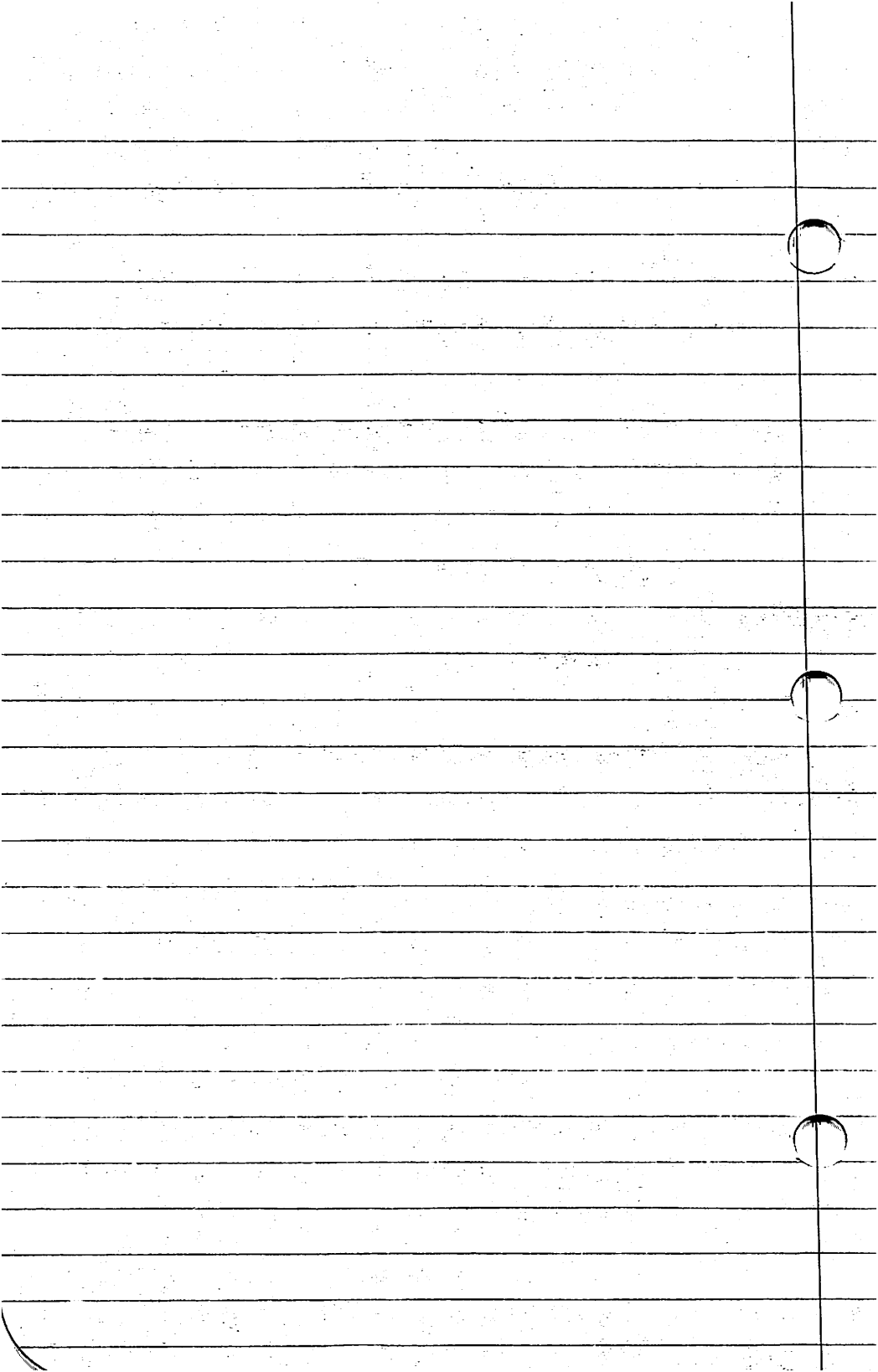
Lepomis megalotis



4/20/86

Little River 10 mi West Mena
Ark Hwy 8 Polk Co Arkansas

Micropterus dolomieu 6 Collectors

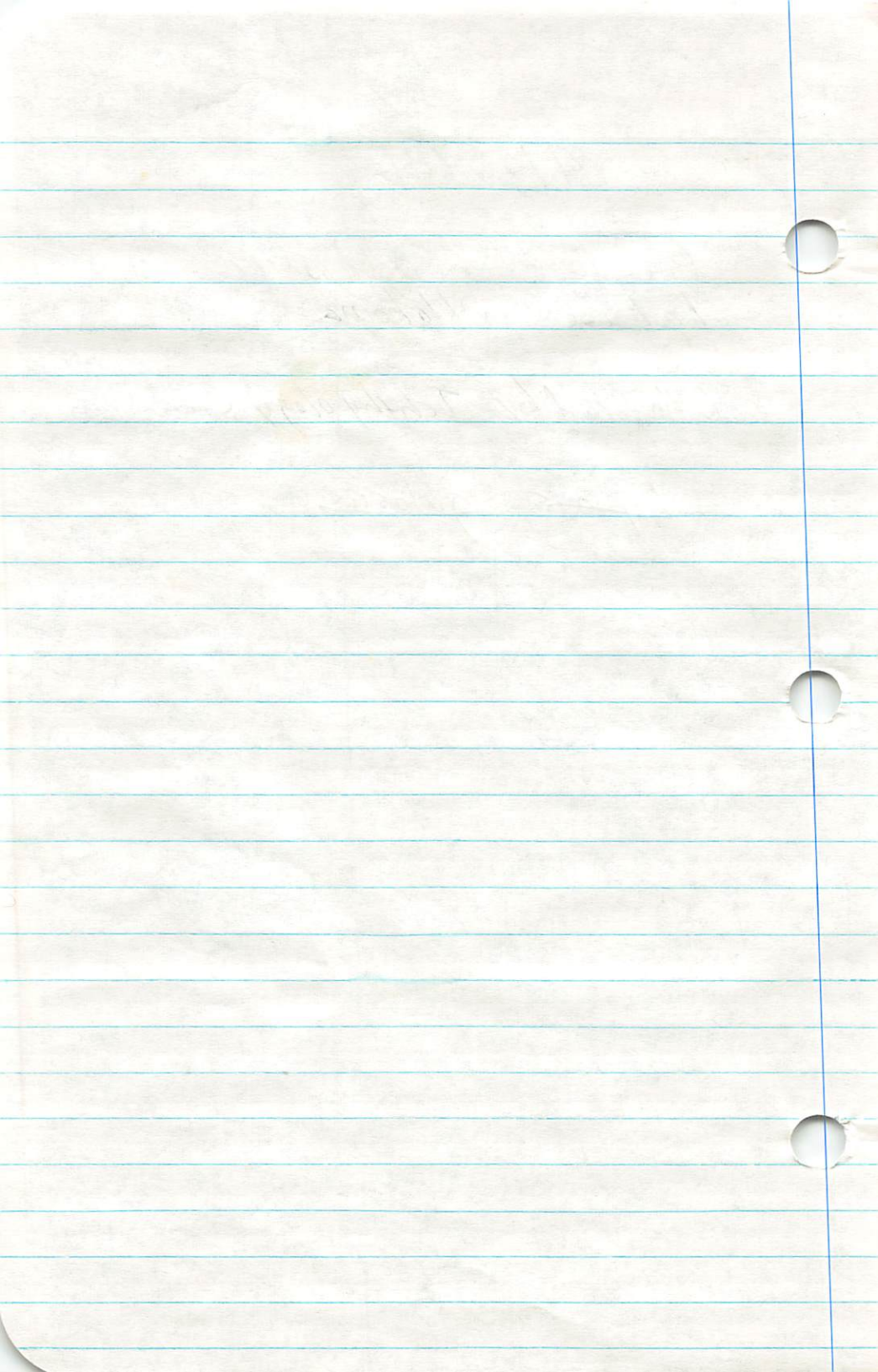


4/20/86

Poteau River Backwater
La Forge Co. Oklahoma

Collected by Ichthyology Class

Lepomis gulosus



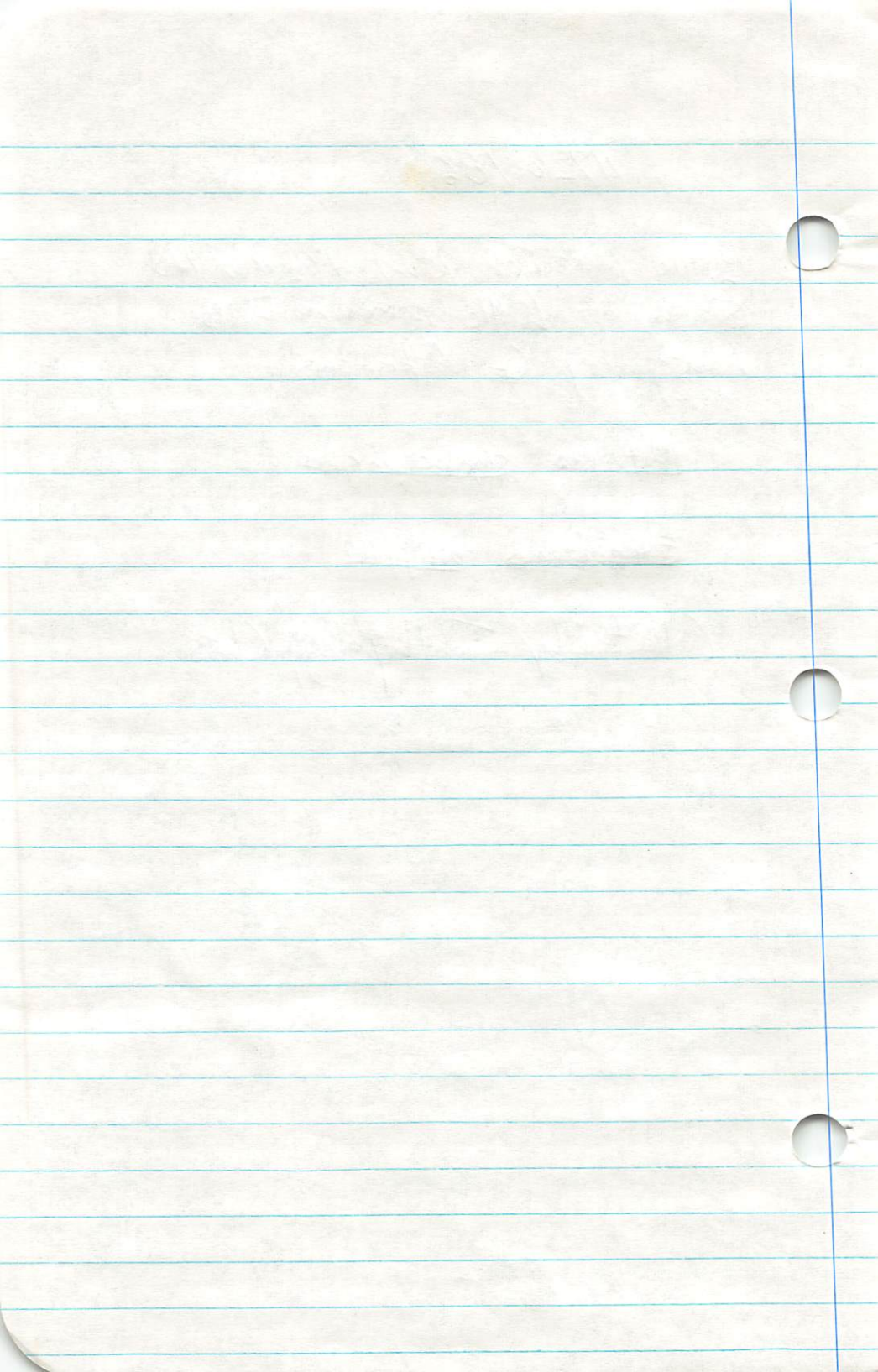
4/20/86

Little Missouri River $1\frac{1}{2}$ miles
South of Little Missouri Falls
Montgomery Co Arkansas

Notropis crysocephalus

Etheostoma whipplei

Collected by Ichthyology Class



4/20/86

Ouchita River McGuire Public
Access area 10 miles East of
Mena Arkansas Montgomery Co.

Water 60°F

Air 65°F

Lepisosteus osseus 6 collector

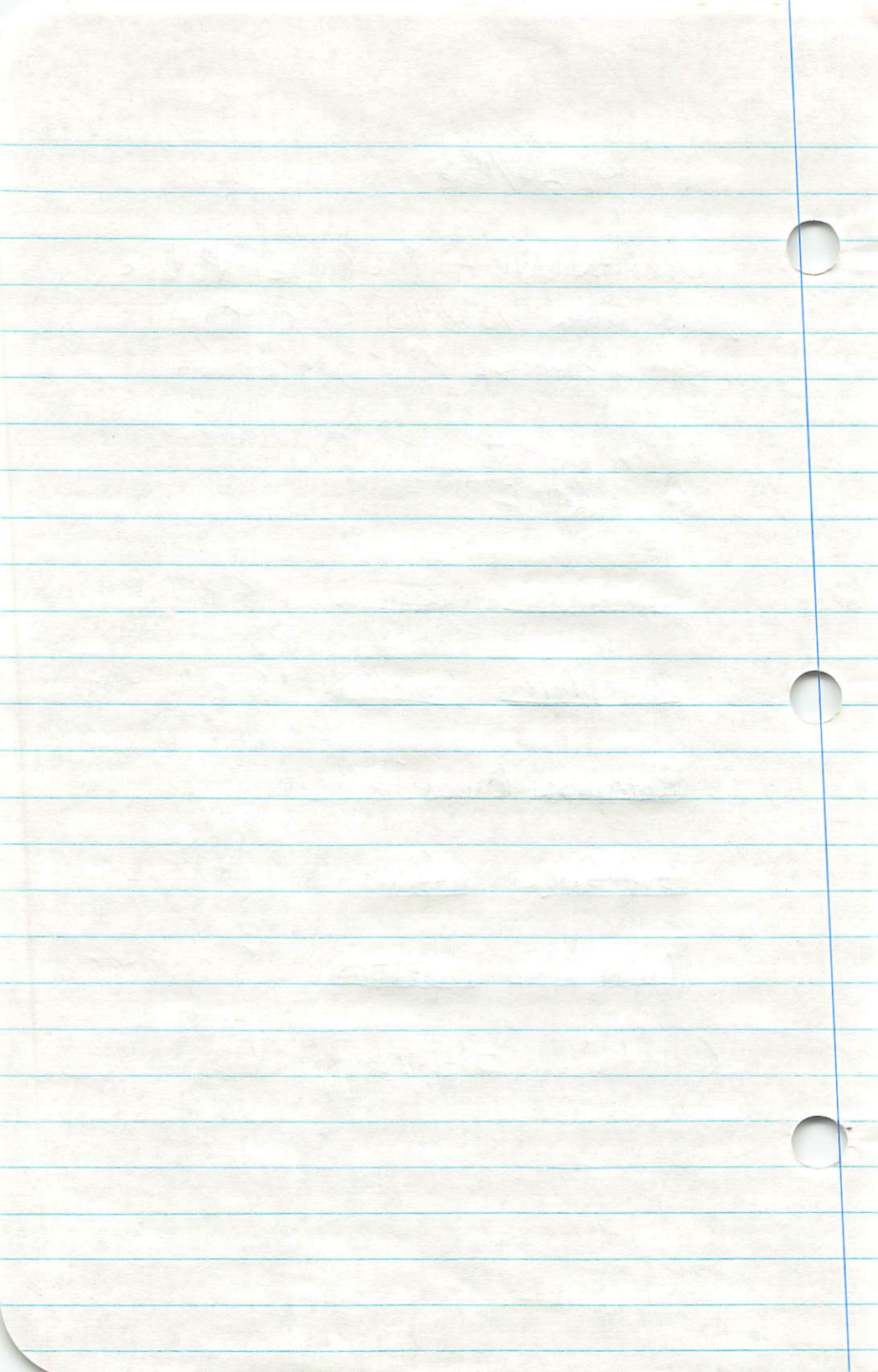
Pimephales fenellus 6 collector

Notropis baeri

Creamfishia affinis

Amphiprion rupestris 6 collector

Collected by Ichthyology Class



5/3/86

Center Creek SW $\frac{1}{4}$ of NW $\frac{1}{4}$ of
Sec: 9, R 29 W, T 27 N Jasper Co
Missouri

Collected by Ichthyology Class

Nocomis asper Co. Collector

Micropterus punctulatus Co. Collector

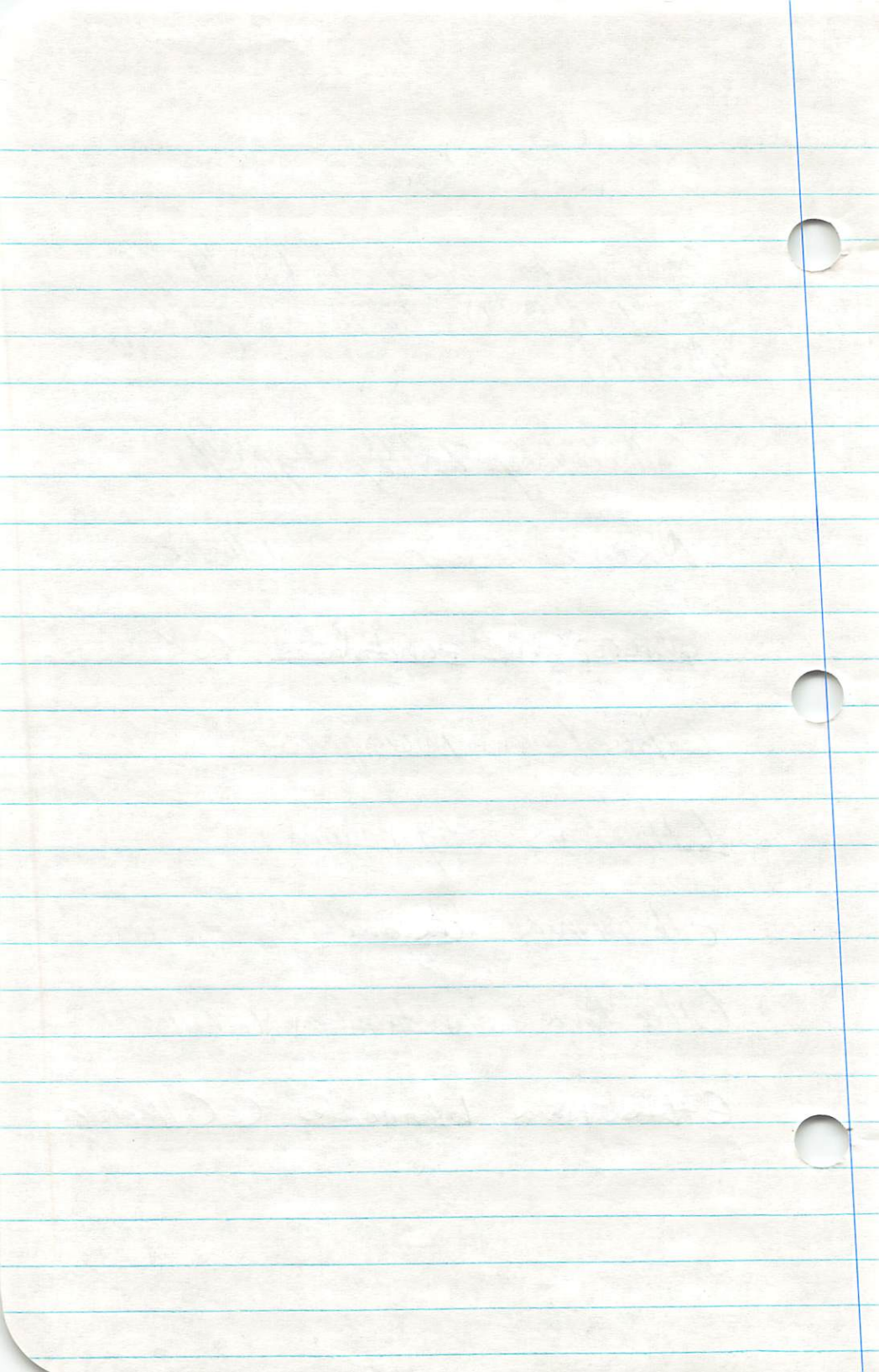
Etheostoma microperca

Etheostoma stigmaeum

Etheostoma cragani

Etheostoma punctulatum Co. Collector

Etheostoma blennioides Co. Collector



5/3/86

James River Near Junction of
Hwy. 13 & 248 Stone Co. Missouri!
SW $\frac{1}{4}$ of SW $\frac{1}{4}$ of Sec 6, R 23 W,
T 24 N.

Clear rocky riffles

Collectors Ichthyology Class

Dorosoma cepedianum

Hybopsis amblopo

Notropis galacturus

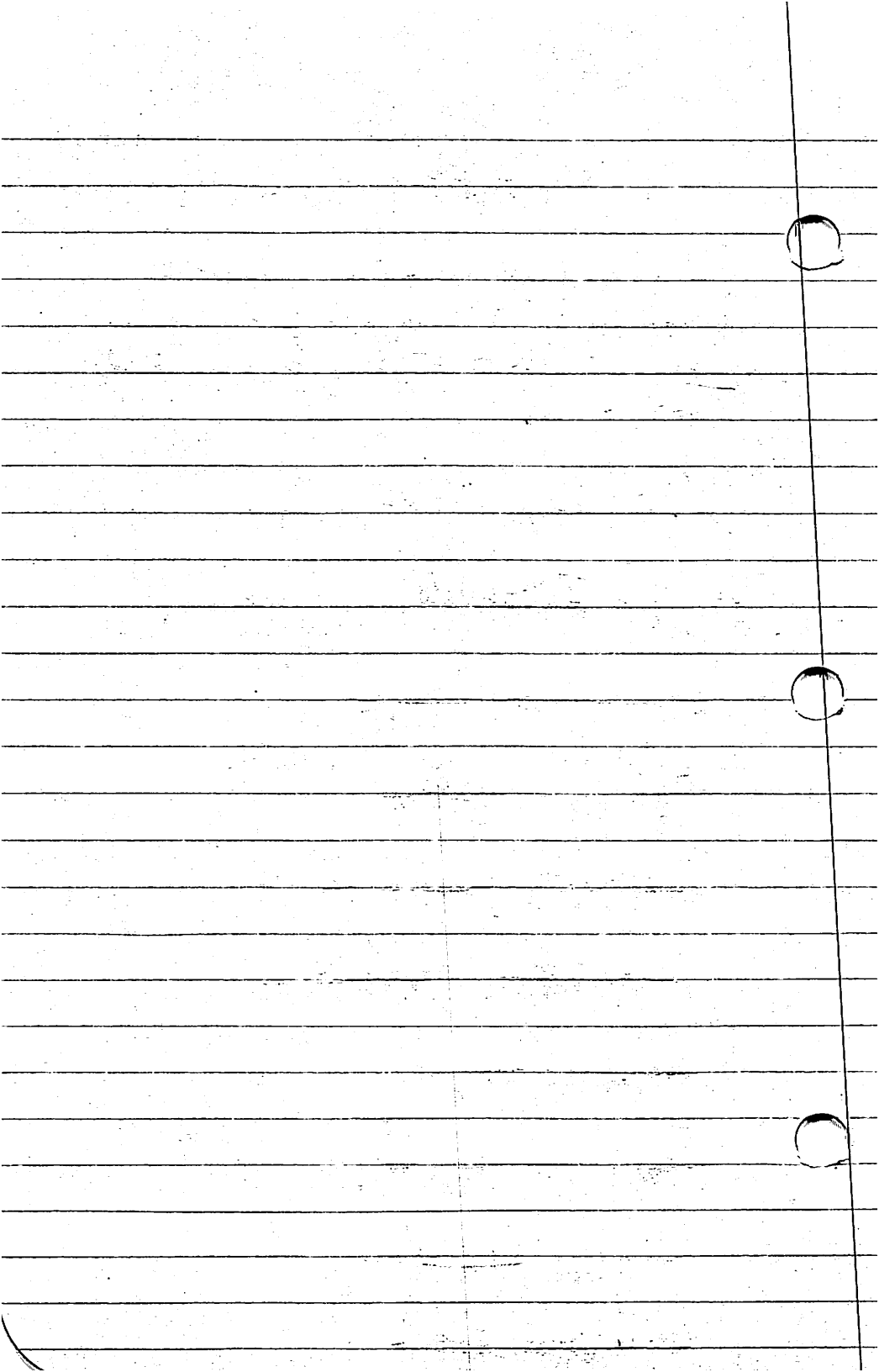
Catostomus commersoni

Noturus albater

Fundulus olivaceus

Percina caprodes

Etheostoma zonale

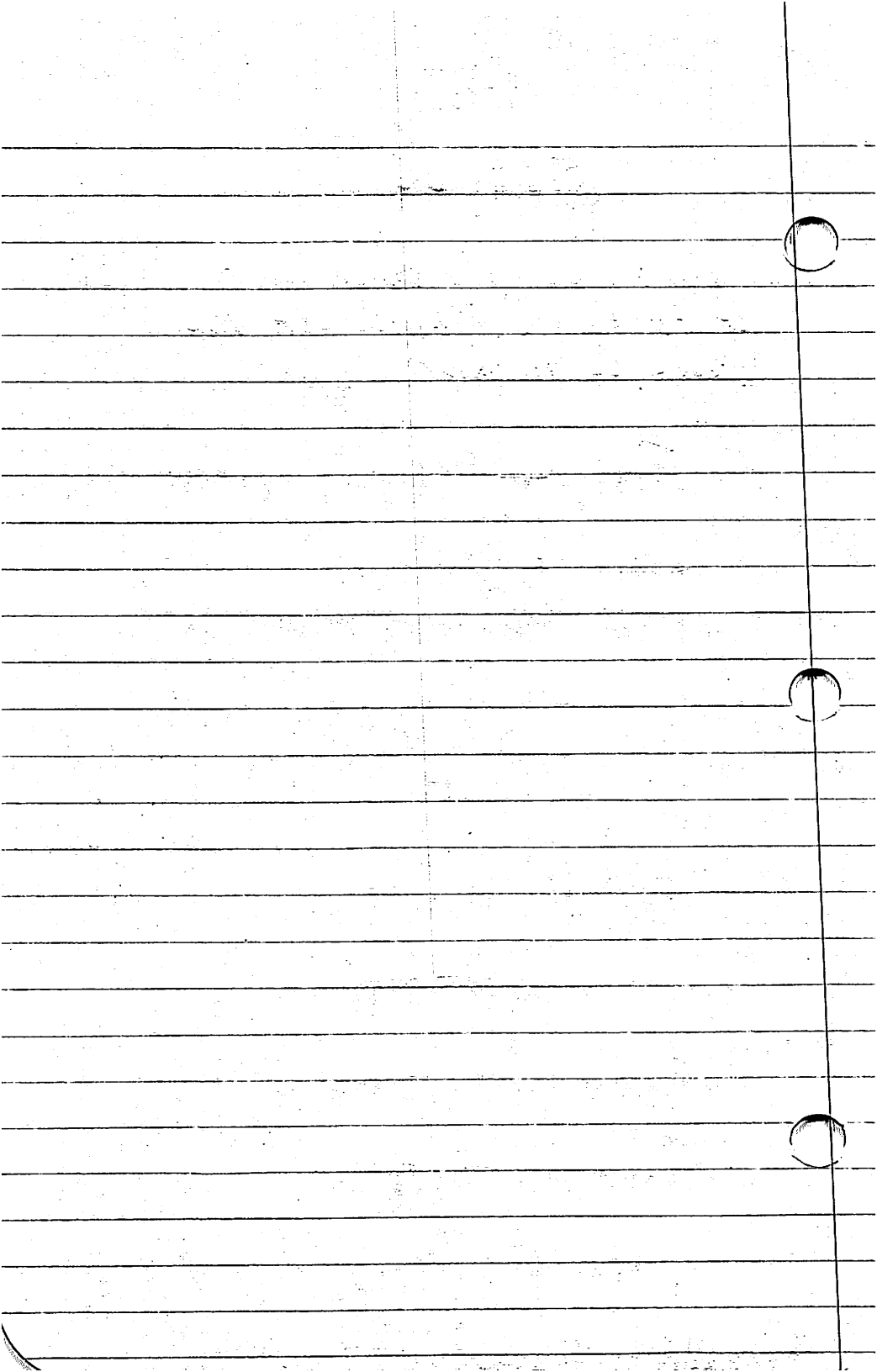


513/86

North Fork of White River
at PP bridge 3 miles off 166
Ozark Co Missouri

Salmo gairdneri

Cottus bairdi



5/4/86

Black River Wayne Co. Missouri
Below Hwy 34 Near Leeper

air 80°F

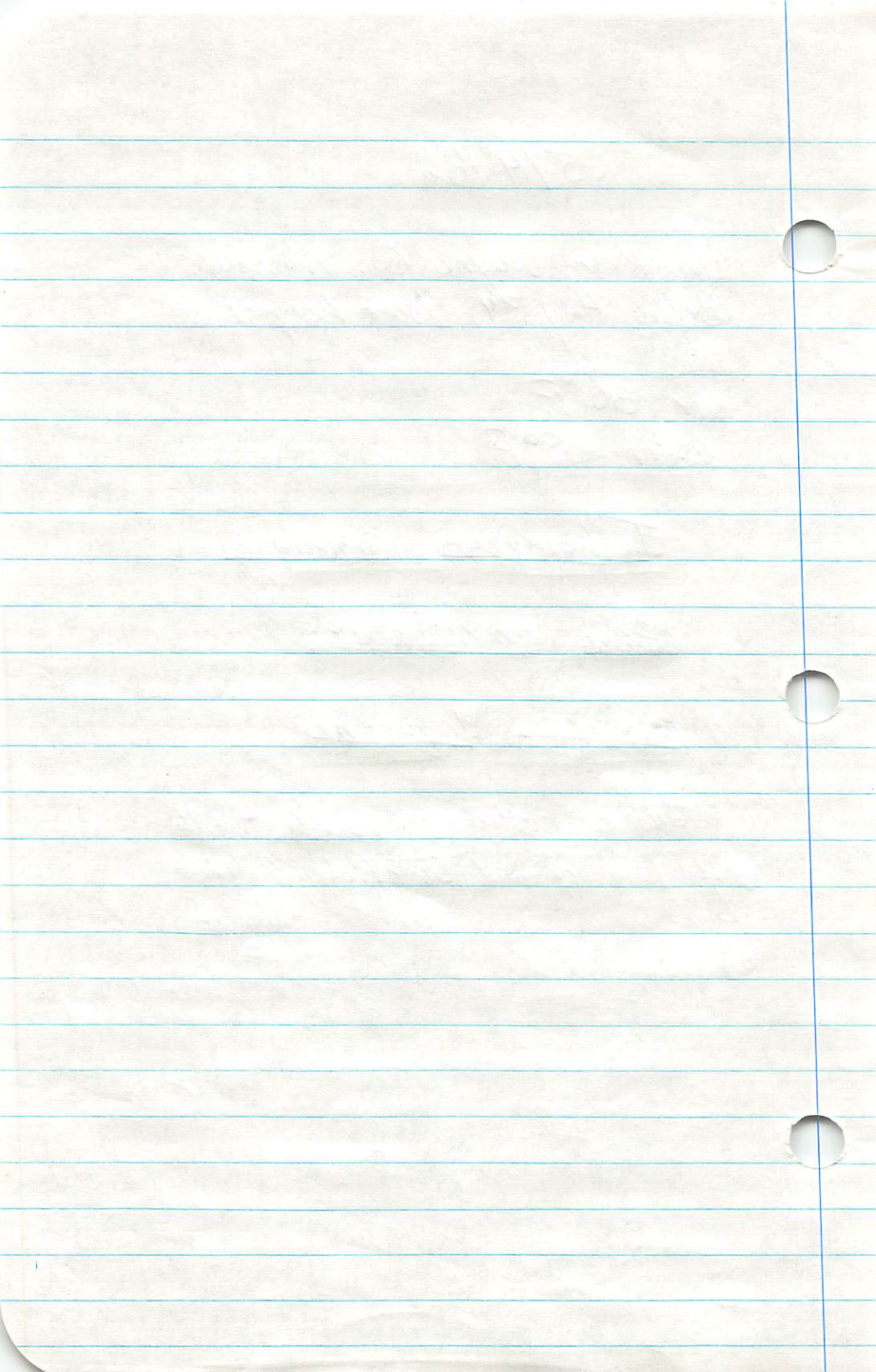
water 65°F

Icthyomyzon castaneus

Esox americanus

Moxostoma duquesnei

All co collector Rhonda Smith
Wes Lamprey and Gene Pickrel



5/4 186

Current River U.S. 60 Bridge
SE $\frac{1}{4}$ of SW $\frac{1}{4}$ Sec 24 R 1W
T27N Van Buren Co. Missouri

Clear Rocky Riffles, backwater,
and eddies

Collectors Ichthyology Class

Campanostoma oligolepis

Notropis nubila

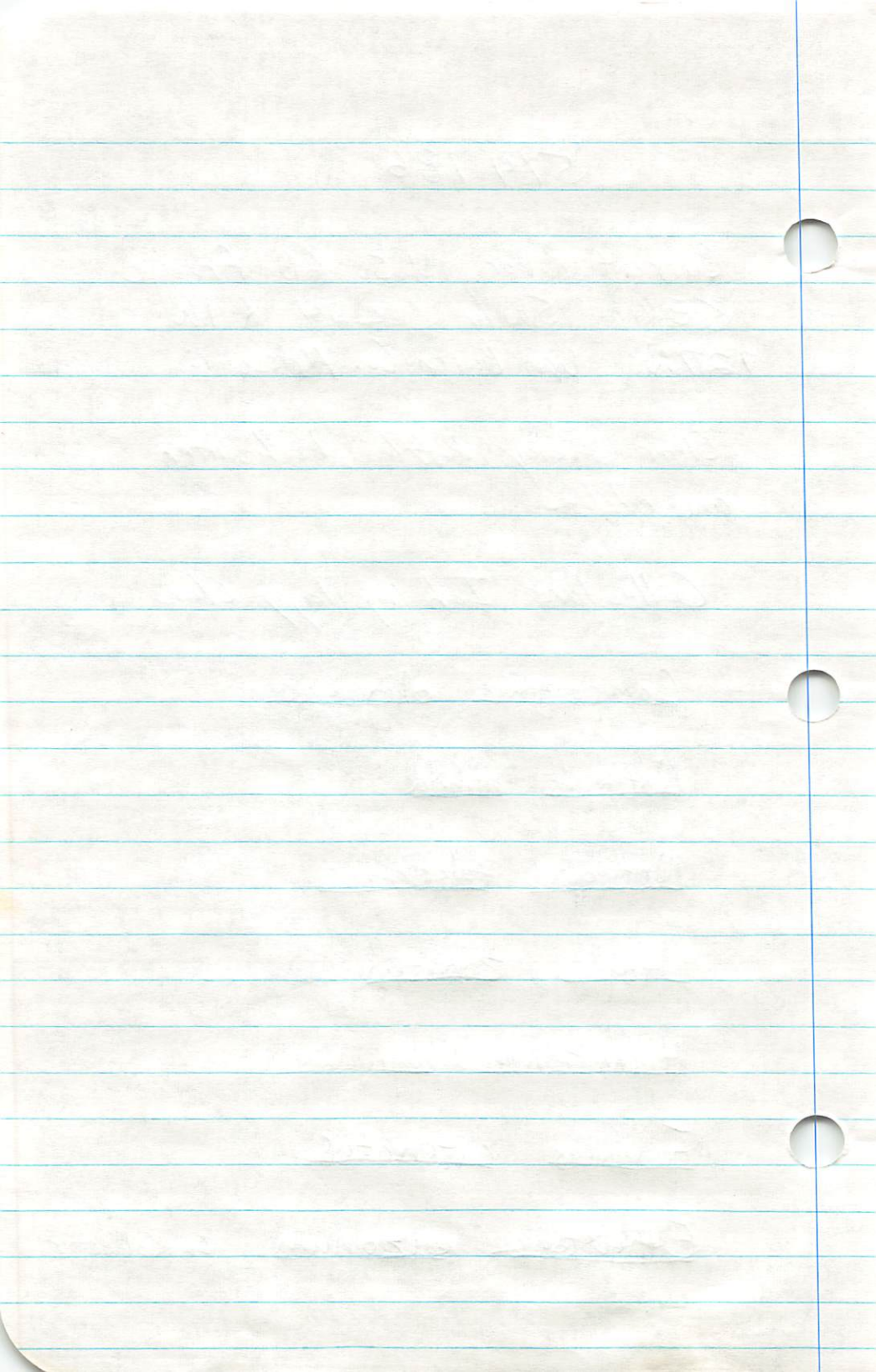
Notropis telescopus

Notropis zonatus

Hyphantelium nigricans

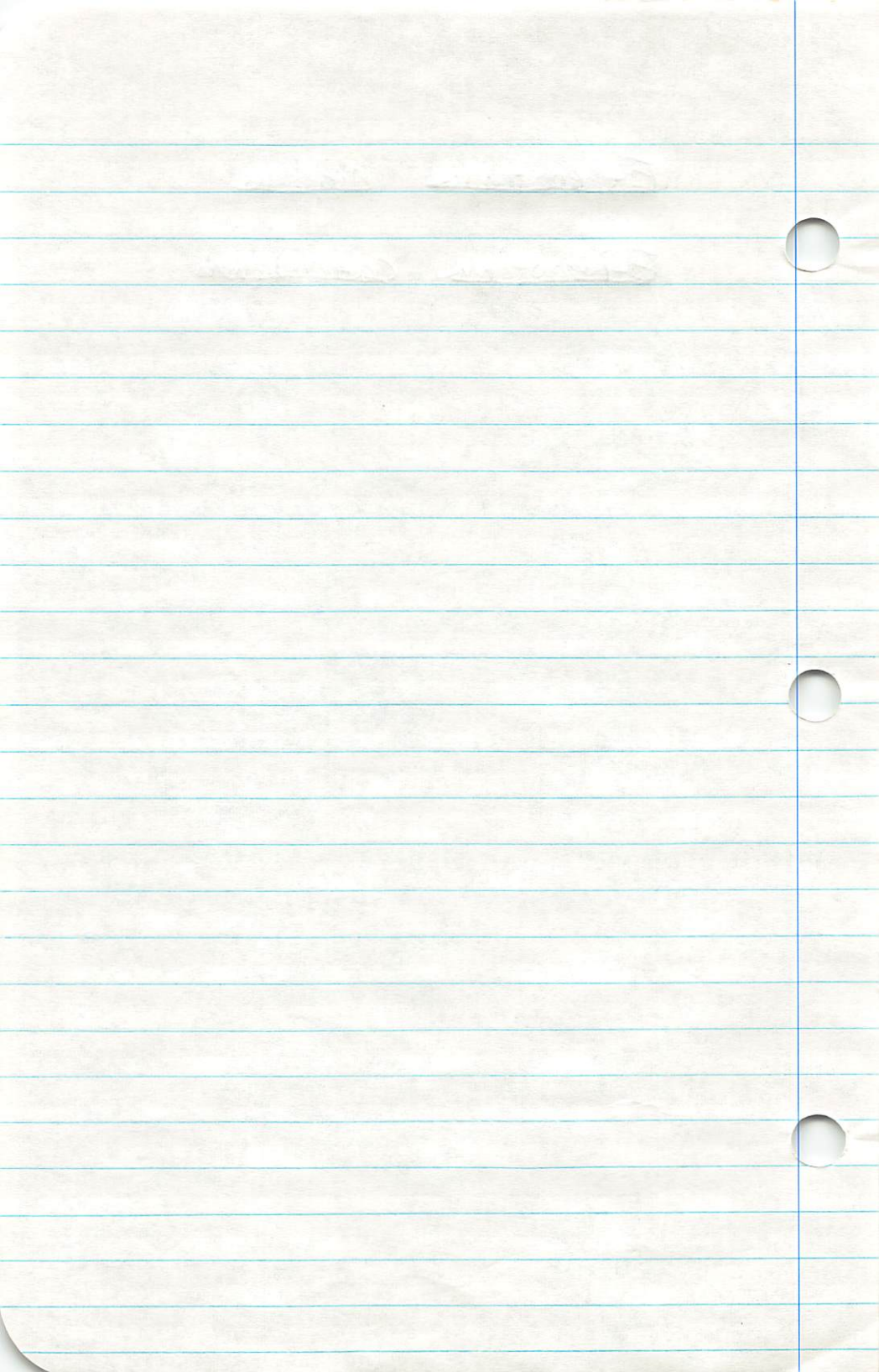
Fundulus catenatus

Etheostoma caeruleum G. Collector



Etheostoma nigrum

Etheostoma caeruleum



5/8/86

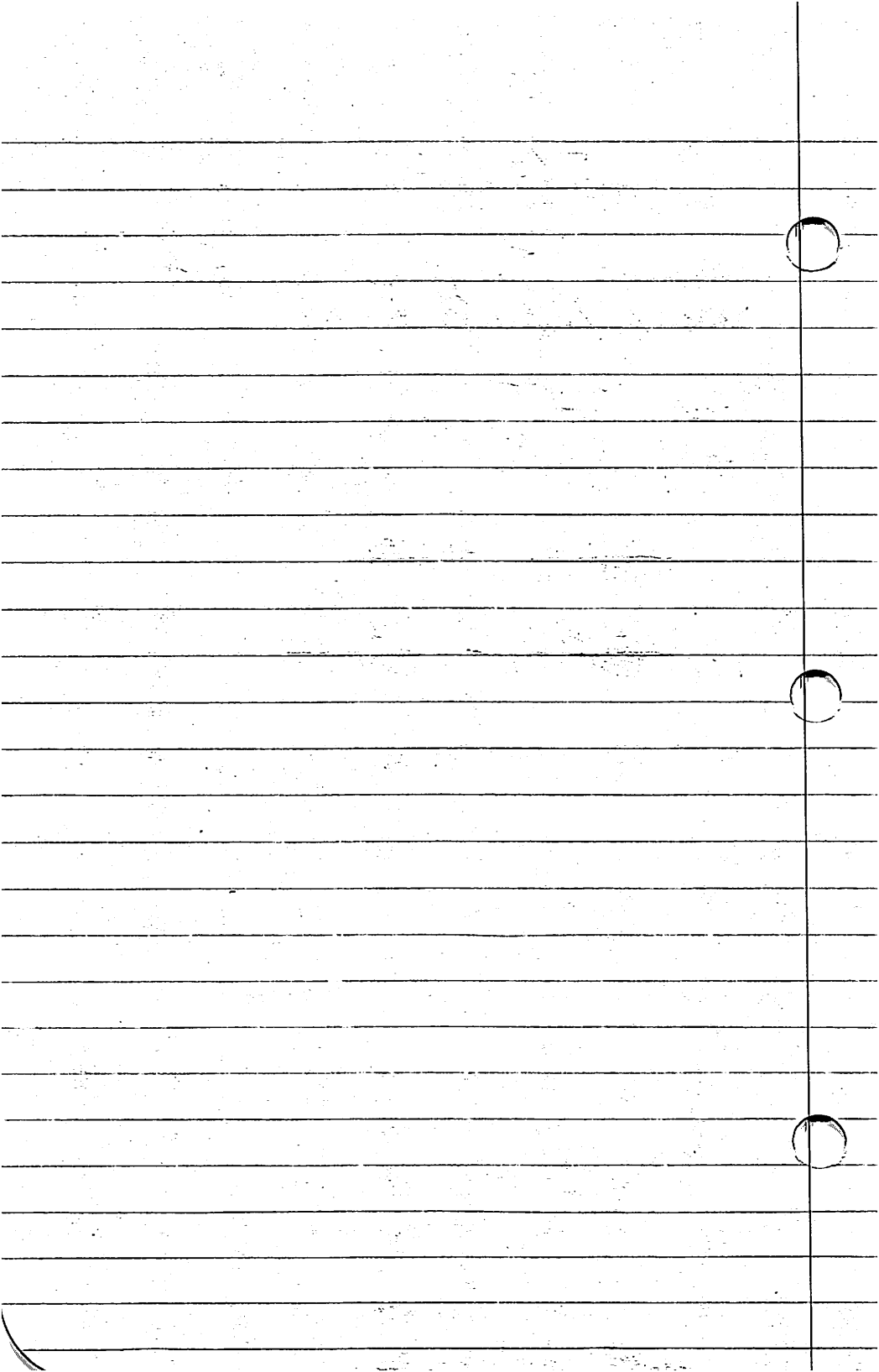
Mammoth Springs National Fish
Hatchery Fulton Co. Arkansas

air 72° F

water 68° F

Carassius auratus

Stizostedion vitreum



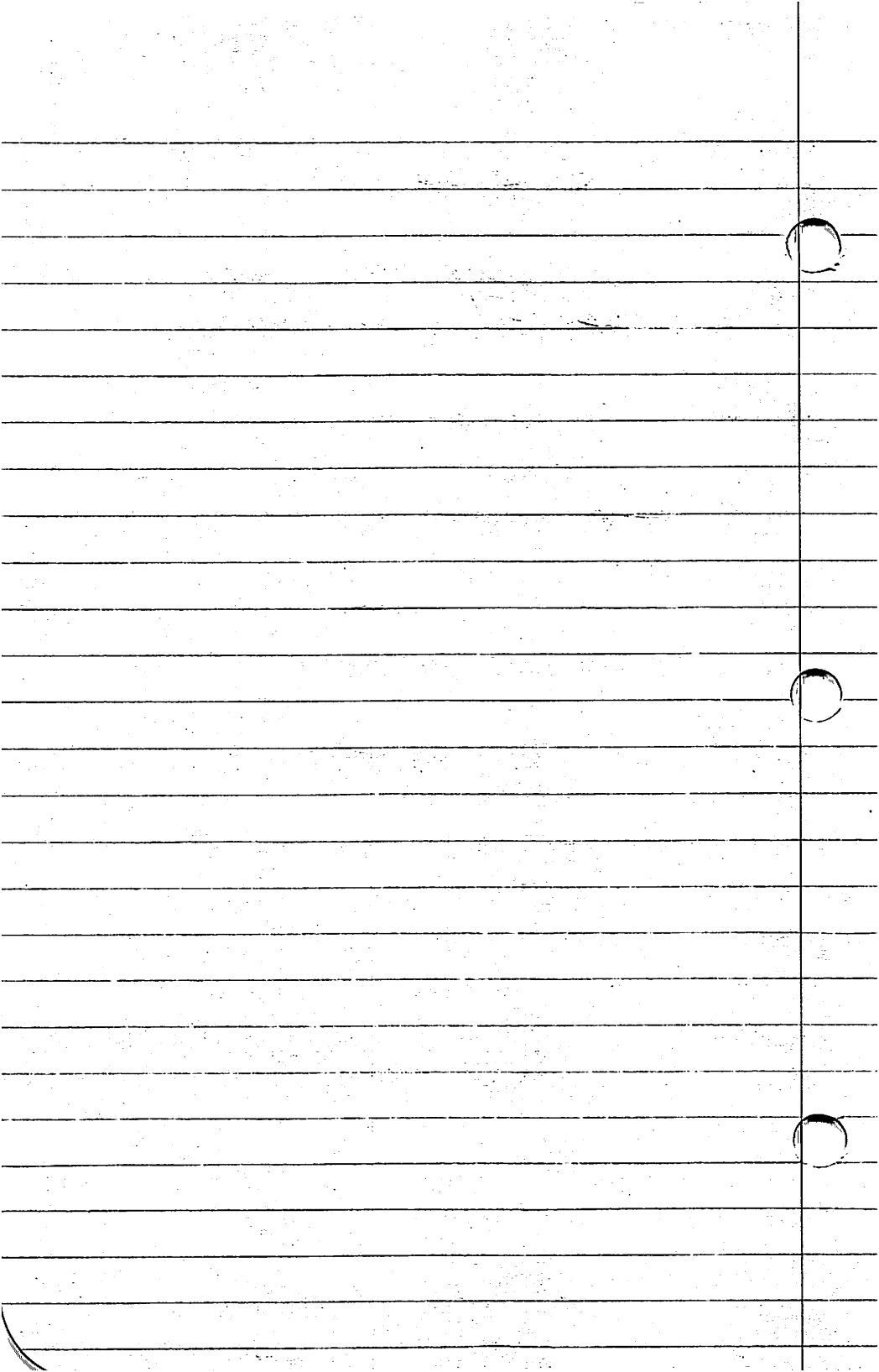
5/8/86

Spring River State Fish Hatchery
Highway 392 Fulton Co. Arkansas

Collected by Rhonda Simpson

Salmo trutta

Carassius auratus

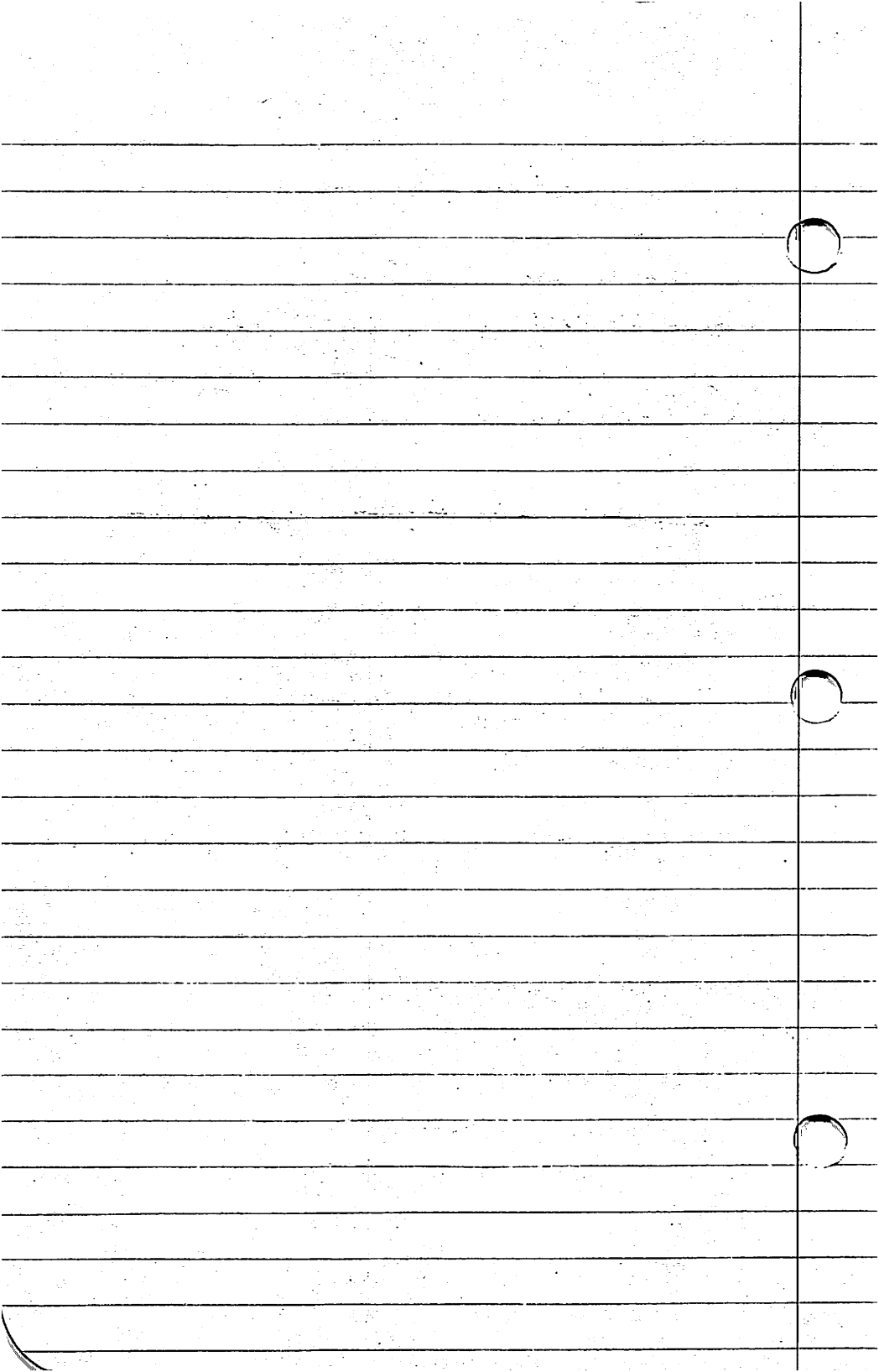


5/10/86

Craighead Co. Arkansas 3 miles
South of Hwy 63 Jonesboro Ark

Collected by Rhonda and D. Simpson

Lepomis microlophus - microchirus



5/13/86

Barber State Fishing Lake
Barber Co. Kansas 5 miles
East of Elmore R 21E, T 26S

Collectors Rob Friggeri

Pomoxis nigromaculatus

