

Jesse Morland

Ichthyology Notebook

Dr. Triplett 2014

Jesse Morland Phylogenetic Species List: Ichthyology 2014
Using updated 2013 EtoI bony fish classifications

Total: 104 Species

Order: Myliobatiformes

Family: Dasyatidae

Species: *Dasyatis sabina*

Location:

Teaching Collection

Order: Clupeiformes

Family: Clupeidae

Species: *Brevoortia patronus*

*Dorosoma petenense**

Jenkinsia lamprotaenia

Teaching Collection

Personal Collection

Teaching Collection

Family: Engraulidae

Species: *Anchoa mitchilli**

Personal Collection

Order: Cypriniformes

Family: Cyprinidae

Species: *Campostoma anomalum*

*Campostoma oligolepis**

Cyprinella galactura

Cyprinella venusta

Hybopsis dissimilis

Luxilus cardinalis

Luxilus cornutus

Luxilus pilsbryi

Nocomis asper

Nocomis biguttatus

Notropis amblops

Notropis boops

Notropis nubilus

Notropis percobromus

Notropis texanus

Notropis zonatus

Phoxinus erythrogaster

Pimphales notatus

Teaching Collection

Personal Collection

Teaching Collection

Teaching Collection

Teaching Collection

Teaching Collection

Teaching Collection

Teaching Collection

Picture

Picture

Teaching Collection

Teaching Collection

Teaching Collection

Teaching Collection

Teaching Collection

Teaching Collection

Teaching Collection

Teaching Collection

Family: Catostomidae

Species: *Moxostoma duquesnei*

Hypentelium nigricans

Teaching Collection

Teaching Collection

Order: Siluriformes

Family: Ictaluridae

Species: *Noturus albater*

Noturus exilis

Ictalurus punctatus

Ameiurus natalis

Teaching Collection

Teaching Collection

Picture

Picture

Family: Ariidae

Species: *Ariopsis felis*

Teaching Collection

Order: Salmoniformes

Family: Salmonidae

Species: *Oncorhynchus mykiss**

Personal Collection

Order: Aulopiformes

Family: Synodontidae

Species: *Synodus foetens*

Picture

Order: Gadiformes

Family: Physidae

Species: *Urophycis regia*

Species: *Urophycis floridana*

Teaching Collection

Teaching Collection

Order: Ophidiiformes

Family: Ophidiidae

Species: *Lepophidium brevibarbe*

Ophidion josephi

Ophidion welshi

Teaching Collection

Teaching Collection

Teaching Collection

Order: Syngnathiformes

Family: Syngnathidae

Species: *Hippocampus erectus*

Picture

Order: Pleuronectiformes

Family: Achiridae

Species: *Trinectes maculatus*

Teaching Collection

Family: Cynoglossidae

Species: *Symphurus plagiusa*

Teaching Collection

Family: Paralichthyidae

Species: *Citharichthys macrops*

Etropus crossotus

Paralichthys squamilentus

Teaching Collection

Teaching Collection

Teaching Collection

Syacium papillosum

Teaching Collection

Order: Antheriniformes

Family: Atherinopsidae

Species: *Membras martinica*
Menidia peninsulae

Teaching Collection

Teaching Collection

Family: Atherinidae

Species: *Labidesthes sicculus*

Teaching Collection

Order: Cyprinodontiformes

Family: Cyprinodontidae

Species: *Cyprinodon variegatus*

Teaching Collection

Family: Poeciliidae

Species: *Gambusia affinis*
Poecilia latipinna

Teaching Collection

Teaching Collection

Family: Fundulidae

Species: *Adinia xenica*
Fundulus catenatus
Fundulus grandis
Fundulus majalis
Fundulus olivaceus
Fundulus pulvereus
Lucania parva

Teaching Collection

Teaching Collection

Teaching Collection

Teaching Collection

Teaching Collection

Teaching Collection

Teaching Collection

Order: Mugiliformes

Family: Mugilidae

Species: *Mugil curema*
Mugil cephalus

Teaching Collection

Teaching Collection

Order: Blenniiformes

Family: Gobiesocidae

Species: *Gobiesox strumosus*

Teaching Collection

Order: Tetraodontiformes

Family: Tetraodontidae

Species: *Sphoeroides parvus*

Teaching Collection

Order: Perciformes

Family: Triglidae

Species: *Prionotus rubio*
Prionotus tribulus

Teaching Collection

Teaching Collection

Family: Cottidae

Species: *Cottus carolinae*
*Cottus hypselurus**

Teaching Collection

Personal Collection

Family: Eleotridae

Species: *Dormitator maculatus*

Teaching Collection

Family: Gobiidae

Species: *Ctenogobius boleosoma*
Gobiosoma bosci

Teaching Collection

Teaching Collection

Family: Trichiuridae

Species: *Trichiurus lepturus*

Teaching Collection

Family: Stromateidae

Species: *Peprilus burti**

Personal Collection

Family: Scombridae

Species: *Scomberomorus maculatus*
Thunnus atlanticus

Teaching Collection

Teaching Collection

Family: Sphyraenidae

Species: *Sphyraena guachancho*

Teaching Collection

Family: Lutjanidae

Species: *Lutjanus campechanus*

Teaching Collection

Family: Moronidae

Species: *Morone chrysops*

Teaching Collection

Family: Sciaenidae

Species: *Cynoscion arenarius*
Leiostomus xanthurus
Menticirrhus americanus
Menticirrhus littoralis
Micropogonias undulatus
Sciaenops ocellatus
Stellifer lanceolatus

Teaching Collection

Teaching Collection

Teaching Collection

Teaching Collection

Teaching Collection

Teaching Collection

Teaching Collection

Family: Sparidae

Species: <i>Archosargus probatocephalus</i>	Teaching Collection
<i>Lagodon rhomboids*</i>	Personal Collection
<i>Stenotomus caprinus*</i>	Personal Collection

Family: Centrarchidae

Species: <i>Lepomis cyanellus</i>	Teaching Collection
<i>Lepomis humilus</i>	Teaching Collection
<i>Lepomis macrochirus</i>	Teaching Collection
<i>Lepomis megalotis*</i>	Personal Collection
<i>Micropterus salmoides</i>	Teaching Collection
<i>Pomoxis nigromaculatus</i>	Picture

Family: Carangidae

Species: <i>Trachurus lathami</i>	Teaching Collection
-----------------------------------	---------------------

Family: Serranidae

Species: <i>Diplectrum bivittatum</i>	Teaching Collection
<i>Perca formosa</i>	Teaching Collection

Family: Percidae

Species: <i>Ammycrypta vivax</i>	Picture
<i>Etheostoma caeruleum*</i>	Personal Collection
<i>Etheostoma cragini</i>	Picture
<i>Etheostoma flabellare</i>	Teaching Collection
<i>Etheostoma microperca</i>	Picture
<i>Etheostoma punctulatum</i>	Teaching Collection
<i>Etheostoma spectabile</i>	Teaching Collection
<i>Etheostoma zonale</i>	Teaching Collection
<i>Percina caprodes</i>	Teaching Collection

Chronological Order of Specimens

Permit Reporting Forms by State

Alabama

Name of Permit: James R. Triplett


Collectors: Class Collection



Common Name	Scientific Name	Date	# of Species	GPS	State and County	Site	Species Disposition
Spotted Hake	<i>Urophycis regius</i>	3-17-14	1	30.27206 N, 88.08156 W	Alabama, Mobile	Billy Goat Ramp	Teaching Collection
Darter Goby	<i>Ctenogobius boleosoma</i>	3-17-14	1	30.27206 N, 88.08156 W	Alabama, Mobile	Billy Goat Ramp	Teaching Collection
Rough Silverside	<i>Membras martinica</i>	3-17-14	1	30.27206 N, 88.08156 W	Alabama, Mobile	Billy Goat Ramp	Teaching Collection
Tidewater Silverside	<i>Menidia peninsulae</i>	3-17-14	4	30.27206 N, 88.08156 W	Alabama, Mobile	Billy Goat Ramp	Teaching Collection
Sailfin Molly	<i>Poecilia latipinna</i>	3-17-14	4	30.27206 N, 88.08156 W	Alabama, Mobile	Billy Goat Ramp	Teaching Collection
Stripped Mullet	<i>Mugil cephalus</i>	3-17-14	43	30.27206 N, 88.08156 W	Alabama, Mobile	Billy Goat Ramp	Teaching Collection
White Mullet	<i>Mugil curema</i>	3-17-14	43	30.27206 N, 88.08156 W	Alabama, Mobile	Billy Goat Ramp	Teaching Collection
Spot Croaker	<i>Leiostamus xanthurus</i>	3-17-14	24	30.27206 N, 88.08156 W	Alabama, Mobile	Billy Goat Ramp	Teaching Collection
Sheepshead Minnow	<i>Cyprinodon variegates</i>	3-17-14	1	30.27206 N, 88.08156 W	Alabama, Mobile	Billy Goat Ramp	Teaching Collection
Southern Hake	<i>Urophycis floridana</i>	3-17-14	2	30.27206 N, 88.08156 W	Alabama, Mobile	Billy Goat Ramp	Teaching Collection
Blackedge Cuskeel	<i>Lepophidium pheromystax</i>	3-17-14	4	30.27206 N, 88.08156 W	Alabama, Mobile	Billy Goat Ramp	Teaching Collection
Gulf Killifish	<i>Fundulus grandis</i>	3-17-14	1	30.27206 N, 88.08156 W	Alabama, Mobile	Billy Goat Ramp	Teaching Collection
Rough Scad	<i>Trachurus lathami</i>	3-17-14	1	30.27206 N, 88.08156 W	Alabama, Mobile	Billy Goat Ramp	Teaching Collection
Gulf Menhaden	<i>Brevoortia patronus</i>	3-17-14	19	30.27206 N, 88.08156 W	Alabama, Mobile	Billy Goat Ramp	Teaching Collection

Common Name	Scientific Name	Date	# of Species	GPS	State and County	Site	Species Disposition
Hardhead Catfish	<i>Ariopsis felis</i>	3-18-14	6	30.257584 N, 88.069925 W	Alabama, Mobile	Ocean Trawl	Teaching Collection
Gulf Kingfish	<i>Menticirrhus littoralis</i>	3-18-14	1	30.257584 N, 88.069925 W	Alabama, Mobile	Ocean Trawl	Teaching Collection
Red Snapper	<i>Lutjanus campechanus</i>	3-18-14	1	30.257584 N, 88.069925 W	Alabama, Mobile	Ocean Trawl	Teaching Collection
Blackwing Sea Robin	<i>Prionotus rubio</i>	3-18-14	5	30.257584 N, 88.069925 W	Alabama, Mobile	Ocean Trawl	Teaching Collection
Atlantic Cutlassfish	<i>Trichiurus lepturus</i>	3-18-14	1	30.257584 N, 88.069925 W	Alabama, Mobile	Ocean Trawl	Teaching Collection
Least Puffer	<i>Spoeoroides parvus</i>	3-18-14	4	30.257584 N, 88.069925 W	Alabama, Mobile	Ocean Trawl	Teaching Collection
Star Drum	<i>Stellifer laceolatus</i>	3-18-14	1	30.257584 N, 88.069925 W	Alabama, Mobile	Ocean Trawl	Teaching Collection
Sand Sea trout	<i>Cynoscion arenarius</i>	3-18-14	10	30.257584 N, 88.069925 W	Alabama, Mobile	Ocean Trawl	Teaching Collection
Gulf Butterfish	<i>Peprilus triacnathus</i>	3-18-14	5	30.257584 N, 88.069925 W	Alabama, Mobile	Ocean Trawl	Teaching Collection
Dwarf Sand Perch	<i>Diplectum bivittatum</i>	3-18-14	8	30.257584 N, 88.069925 W	Alabama, Mobile	Ocean Trawl	Teaching Collection
Southern Kingfish	<i>Menticirrhus americanus</i>	3-18-14	2	30.257584 N, 88.069925 W	Alabama, Mobile	Ocean Trawl	Teaching Collection
Bighead Sea Robin	<i>Prionotus tribulus</i>	3-18-14	1	30.257584 N, 88.069925 W	Alabama, Mobile	Ocean Trawl	Teaching Collection
Fringed Flounder	<i>Etropus crossotus</i>	3-18-14	5	30.257584 N, 88.069925 W	Alabama, Mobile	Ocean Trawl	Teaching Collection
Spotted Whiff	<i>Citharichthys macrops</i>	3-18-14	2	30.257584 N, 88.069925 W	Alabama, Mobile	Ocean Trawl	Teaching Collection
Dusky Flounder	<i>Syacium papillosum</i>	3-18-14	4	30.257584 N, 88.069925 W	Alabama, Mobile	Ocean Trawl	Teaching Collection
Sand Perch	<i>Diplectum formosum</i>	3-18-14	8	30.257584 N, 88.069925 W	Alabama, Mobile	Ocean Trawl	Teaching Collection

Bay Anchovy	<i>Anchoa mitchilli</i>	3-18-14	19	30.257584 N, 88.069925 W	Alabama, Mobile	Ocean Trawl	Teaching Collection
Long Spine Porgy	<i>Stenotomus caprinus</i>	3-18-14	6	30.257584 N, 88.069925 W	Alabama, Mobile	Ocean Trawl	Personal Collection
Atlantic Stingray	<i>Dasyatis sabina</i>	3-18-14	1	30.257584 N, 88.069925 W	Alabama, Mobile	Ocean Trawl	Teaching Collection
Atlantic Croaker	<i>Micropogonias undulates</i>	3-18-14	1	30.257584 N, 88.069925 W	Alabama, Mobile	Ocean Trawl	Teaching Collection
Hogchoaker	<i>Trinectes maculatus</i>	3-18-14	1	30.257584 N, 88.069925 W	Alabama, Mobile	Ocean Trawl	Teaching Collection
Pinfish	<i>Lagodon rhomboids</i>	3-18-14	1	30.257584 N, 88.069925 W	Alabama, Mobile	Ocean Trawl	Personal Collection
Threadfin Shad	<i>Dorosoma pretnense</i>	3-18-14	8	30.257584 N, 88.069925 W	Alabama, Mobile	Ocean Trawl	Personal Collection
Crested Cusk-eel	<i>Ophidion josephi</i>	3-18-14	1	30.257584 N, 88.069925 W	Alabama, Mobile	Ocean Trawl	Teaching Collection
Spotted Hake	<i>Urophycis regia</i>	3-18-14	5	30.257584 N, 88.069925 W	Alabama, Mobile	Ocean Trawl	Teaching Collection
Southern Hake	<i>Merluccius australis</i>	3-18-14	3	30.257584 N, 88.069925 W	Alabama, Mobile	Ocean Trawl	Teaching Collection
Sheepshead	<i>Archosargus probatocephalus</i>	3-18-14	-	30.257584 N, 88.069925 W	Alabama, Mobile	Ocean Trawl	Photograph
Inshore Lizardfish	<i>Synodus foetens</i>	3-18-14	-	30.257584 N, 88.069925 W	Alabama, Mobile	Ocean Trawl	Photograph
Lined Seahorse	<i>Hippocampus ercectus</i>	3-18-14	-	30.257584 N, 88.069925 W	Alabama, Mobile	Ocean Trawl	Photograph
Guaguanche	<i>Sphyaena guachancho</i>	3-18-14	1	30.257584 N, 88.069925 W	Alabama, Mobile	Ocean Trawl	Photograph

Common Name	Scientific Name	Date	# of Species	GPS	State and County	Site	Species Disposition
Stripped Mullet	<i>Mugil cephalus</i>	3-19-14	9	30.246176 N, 88.082806	Alabama, Mobile	Campsite Beach	Teaching Collection
Gulf Butterfish	<i>Peprilus burti</i>	3-19-14	3	30.27206 N, 88.08156 W	Alabama, Mobile	Campsite Beach	Personal Collection
Gulf Kingfish	<i>Menticirrhus littoralis</i>	3-19-14	1	30.27206 N, 88.08156 W	Alabama, Mobile	Campsite Beach	Teaching Collection
Bay Anchovy	<i>Anchoa mitchilli</i>	3-19-14	1	30.27206 N, 88.08156 W	Alabama, Mobile	Campsite Beach	Personal Collection
Southern Flounder	<i>Paralichthys lethostigma</i>	3-19-14	2	30.27206 N, 88.08156 W	Alabama, Mobile	Campsite Beach	Teaching Collection
Skillet Fish	<i>Gobiesox strumosus</i>	3-19-14	1	30.27206 N, 88.08156 W	Alabama, Mobile	Campsite Beach	Teaching Collection
Black Fin Tuna (Head)	<i>Thunnus atlanticus</i>	3-19-14	-	30.27206 N, 88.08156 W	Alabama, Mobile	Billy Goat Ramp	Photograph only
Skillet Fish	<i>Gobiesox strumosus</i>	3-19-14	1	30.27206 N, 88.08156 W	Alabama, Mobile	Billy Goat Ramp	Teaching Collection
Parter Goby	<i>Ctenogobius boleosoma</i>	3-19-14	7	30.27206 N, 88.08156 W	Alabama, Mobile	Billy Goat Ramp	Teaching Collection
Bayou Killifish	<i>Fundulus pulvereus</i>	3-19-14	1	30.27206 N, 88.08156 W	Alabama, Mobile	Billy Goat Ramp	Teaching Collection
Diamond Killifish	<i>Adinia xenic</i>	3-19-14	3	30.27206 N, 88.08156 W	Alabama, Mobile	Billy Goat Ramp	Teaching Collection
Tidewater Silverside	<i>Menidia peninsulae</i>	3-19-14	2	30.27206 N, 88.08156 W	Alabama, Mobile	Billy Goat Ramp	Teaching Collection
Gulf Killifish	<i>Fundulus grandis</i>	3-19-14	2	30.27206 N, 88.08156 W	Alabama, Mobile	Billy Goat Ramp	Teaching Collection
Sheepshead Minnow	<i>Cyprinodon variegatus</i>	3-19-14	10	30.27206 N, 88.12998 W	Alabama, Mobile	Airport Marsh	Teaching Collection
White Mullet	<i>Mugil curema</i>	3-19-14	11	30.27206 N, 88.12998 W	Alabama, Mobile	Airport Marsh	Teaching Collection
Spot Croaker	<i>Leiostomus xanthurus</i>	3-19-14	11	30.27206 N, 88.12998 W	Alabama, Mobile	Airport Marsh	Teaching Collection
Rainwater Killifish	<i>Lucania parva</i>	3-19-14	1	30.27206 N, 88.12998 W	Alabama, Mobile	Airport Marsh	Teaching Collection

 Dwarf Herring	<i>Jenkinsia lamprotaenia</i>	3-19-14		30.27206 N, 88.12998 W	Alabama, Mobile	Airport Marsh	Teaching Collection
Striped Killifish	<i>Fundulus majalis</i>	3-19-14	3	30.27206 N, 88.12998 W	Alabama, Mobile	Airport Marsh	Teaching Collection
Sailfin Molly	<i>Poecilia latipinna</i>	3-19-14	6	30.27206 N, 88.08156 W	Alabama, Mobile	Tidal Ditch	Teaching Collection
Fat Sleeper	<i>Dormitator maculatus</i>	3-19-14	1	30.27206 N, 88.08156 W	Alabama, Mobile	Tidal Ditch	Teaching Collection

Common Name	Scientific Name	Date	# of Species	GPS	State and County	Site	Species Disposttion
Pinfish	<i>Lagodon rhomboids</i>	3-20-14	4	30.255143N, 87715166W	Alabama, Mobile	Lagoon Park Launch	Teaching Collection
 Darter Goby	<i>Ctenogobius boleosoma</i>	3-20-14	6	30.255143N, 87715166W	Alabama, Mobile	Lagoon Park Launch	Teaching Collection
Tidewater Silverside	<i>Menidia peninsulae</i>	3-20-14	1	30.255143N, 87715166W	Alabama, Mobile	Lagoon Park Launch	Teaching Collection
Bay Anchovy	<i>Anchoa mitchilli</i>	3-20-14	1	30.255143N, 87715166W	Alabama, Mobile	Lagoon park Launch	Teaching Collection
Naked Goby	<i>Gobiosoma boscii</i>	3-20-14	4	30.255143N, 87715166W	Alabama, Mobile	Lagoon park Launch	Teaching Collection
Black Cheek Tongue Fish	<i>Symphurus plagiusa</i>	3-20-14	1	30.255143N, 87715166W	Alabama, Mobile	Lagoon park Launch	Teaching Collection
Southern Flounder	<i>Paralichthys lethostigma</i>	3-20-14	1	30.322711 N, 88.135942	Alabama, Mobile	Causeway	Teaching Collection
Striped Mullet	<i>Mugil cephalus</i>	3-20-14	1	30.322711 N, 88.135942	Alabama, Mobile	Causeway	Teaching Collection
Broad Flounder	<i>Paralichthys squamilentus</i>	3-20-14	1	30.322711 N, 88.135942	Alabama, Mobile	Causeway	Teaching Collection
Mosquito Fish	<i>Gambusia affinis</i>	3-20-14	1	30.27206 N, 88.08156 W	Alabama, Mobile	Tidal Ditch	Teaching Collection
 Spanish Mackerel (head)	<i>Scomberomorus maculatus</i>	3-20-14	-	30.27206 N, 88.08156 W	Alabama, Mobile	Billy Goat Ramp	Photograph
Red-Drum (teeth)	<i>Sciaenops ocellatus</i>	3-20-14	-	30.27206 N, 88.08156 W	Alabama, Mobile	Campsite Beach	Photograph

4/12/2014

Center Creek

Old US 66

N 37°04'18.12 W -94° 06' 35.66

Jasper County, MO

Habitat: Stream

Collectors: Allison Hullinger, Tyler Dubin, Brady Bunton, Deann Harreld, Lewis Kellogg, Jared Lytle, Dillon Barton, McKenzie May, Jesse Morland, Thomas Myers, Thomas Westerhaus, Samantha Young, James Triplett

Species Collected:

Scientific Name	Common Name	#	Location
<i>Luxilus cardinalis</i>	(Cardinal Shiner)	(13)	Teaching Collection
<i>Lepomis macrochirus</i>	(Bluegill)	(1)	Teaching Collection
<i>Etheostoma flabellare</i>	(Fantail Darter)	(3)	Teaching Collection
<i>Etheostoma punctulatum</i>	(Stippled Darter)	(10)	Teaching Collection
<i>Noturus exilis</i>	(Slender Madtom)	(5)	Teaching Collection
<i>Etheostoma microperca</i>	(Least Darter)	(1)	Released
<i>Etheostoma cragini</i>	(Arkansas Darter)	(1)	Released
<i>Campostoma anomalum</i>	(Central Stoneroller)	(6)	Teaching Collection
<i>Etheostoma spectabile</i>	(Orangethroat Darter)	(8)	Teaching Collection
<i>Hypentelium nigricans</i>	(Northern Hogsucker)	(2)	Teaching Collection
<i>Cottos carolinae</i>	(Banded Sculpin)	(1)	Teaching Collection
<i>Morone chrysops</i>	(White Bass)	(1)	Dead when found
<i>Notropis nubilus</i>	(Ozark Minnow)	(2)	Teaching Collection
<i>Nocomis asper</i>	(Redspot Chub)	(1)	Released
<i>Lepomis cyanellus</i>	(Green Sunfish)	(1)	Teaching Collection
<i>Notropis percobromus</i>	(Carmine Shiner)	(4)	Teaching Collection

James River

Off MO 125

N 36.80720, W -93.46265

Stone County, MO

Habitat: River

Collectors: Allison Hullinger, Tyler Dubin, Brady Bunton, Deann Harreld, Lewis Kellogg, Jared Lytle, Dillon Barton, McKenzie May, Jesse Morland, Thomas Myers, Thomas Westerhaus, Samantha Young, James Triplett

Species Collected

Scientific Name	Common Name	#	Location
<i>Luxilus pilsbryi</i>	(Duskystripe Shiner)	(3)	Teaching Collection
<i>Fundulus olivaceus</i>	(Blackspotted Topminnow)	(5)	Teaching Collection
<i>Etheostoma spectabile</i>	(Orangethroat Darter)	(5)	Teaching Collection
<i>Etheostoma caeruleum</i>	(Rainbow Darter)	(5)	Personal Collection
<i>Campostoma oligolepis</i>	(Largescale Stoneroller)	(2)	Personal Collection
<i>Campostoma pullum</i>	(Central Stoneroller)	(2)	Teaching Collection
<i>Percina caprodes</i>	(Logperch)	(1)	Teaching Collection
<i>Noturus albater</i>	(Ozark Madtom)	(3)	Teaching Collection
<i>Fundulus catenatus</i>	(Northern Studfish)	(2)	Teaching Collection
<i>Etheostoma zonale</i>	(Banded Darter)	(2)	Teaching Collection
<i>Phoxinus erythrogaster</i>	(Southern Redbelly Dace)	(1)	Teaching Collection
<i>Notropis nubilus</i>	(Ozark Minnow)	(3)	Teaching Collection
<i>Luxilus cornutus</i>	(Striped Shiner)	(2)	Teaching Collection

Beaver Creek

Kissee Mills, MO

N 36.67333, W -93.02072

Taney County, MO

Habitat: Stream

Collectors: Allison Hullinger, Tyler Dubin, Brady Bunton, Deann Harreld, Lewis Kellogg, Jared Lytle, Dillon Barton, McKenzie May, Jesse Morland, Thomas Myers, Thomas Westerhaus, Samantha Young, James Triplett

Species Collected

Scientific Name	Common Name	#	Location
<i>Micropterus salmoides</i>	(Largemouth Bass)	(1)	Teaching Collection

<i>Percina caprodes</i>	(Logperch)	(4)	Teaching Collection
<i>Lepomis macrochirus</i>	(Bluegill)	(2)	Teaching Collection
<i>Fundulus catenatus</i>	(Northern Studfish)	(4)	Teaching Collection
<i>Lepomis megalotis</i>	(Longear Sunfish)	(6)	Personal Collection
<i>Hybopsis dissimilis</i>	(Streamline Chub)	(1)	Teaching Collection
<i>Fundulus olivaceus</i>	(Blackspotted Topminnow)	(2)	Teaching Collection
<i>Campostoma pullum</i>	(Central Stoneroller)	(1)	Teaching Collection
<i>Etheostoma spectabile</i>	(Orangethroat Darter)	(2)	Teaching Collection
<i>Notropis boops</i>	(Bigeye Shiner)	(1)	Teaching Collection
<i>Cyprinella galactura</i>	(Whitetail Shiner)	(3)	Teaching Collection
<i>Notropis annectans</i>	(Bigeye Chub)	(1)	Teaching Collection
<i>Notropis nubilus</i>	(Ozark Minnow)	(1)	Teaching Collection

White River

Sunburst Canoe Ranch

N 36.65482, W -92.22122

Ozark County, MO

Habitat: River

Collectors: Allison Hullinger, Tyler Dubin, Brady Bunton, Deann Harreld, Lewis Kellogg, Jared Lytle, Dillon Barton, McKenzie May, Jesse Morland, Thomas Myers, Thomas Westerhaus, Samantha Young, James Triplett

Species Collected

Scientific Name	Common Name	#	Location
<i>Oncorhynchus mykiss</i>	(Rainbow Trout)	(4)	Personal Collection
<i>Cottus caroliniae</i>	(Banded Sculpin)	(1)	Teaching Collection
<i>Nocomis biguttatus</i>	(Horney Head Chub)	(5)	Released
<i>Etheostoma caeruleum</i>	(Rainbow Darter)	(1)	Teaching Collection
<i>Cottus hypselurus</i>	(Ozark Sculpin)	(6)	Personal Collection
<i>Phoxinus erythrogaster</i>	(Redbelly Dace)	(1)	Teaching Collection
<i>Luxilus pilsbryi</i>	(Duskystripe Shiner)	(1)	Teaching Collection
<i>Etheostoma punctulatum</i>	(Stippled Darter)	(3)	Teaching Collection

4/13/ 2014

Black River

MO 34, Mill Spring

N 36.99232, W -91.01342

Wayne County, MO

Habitat: River

Collectors: Allison Hullinger, Tyler Dubin, Brady Bunton, Deann Harreld, Lewis Kellogg, Jared Lytle, Dillon Barton, McKenzie May, Jesse Morland, Thomas Myers, Thomas Westerhaus, Samantha Young, James Triplett

Species Collected:

Scientific Name	Common Name	#	Location
<i>Ammocrypta vivax</i>	(Scaly Sand Darter)	(1)	Released
<i>Gambusia affinis</i>	(Mosquito Fish)	(2)	Teaching Collection
<i>Pimphales notatus</i>	(Blunt Nose Minnow)	(4)	Teaching Collection
<i>Notropis texanus</i>	(Weed Shiner)	(6)	Teaching Collection
<i>Cyprinella venusta</i>	(Blacktail Shiner)	(7)	Teaching Collection
<i>Notropis boops</i>	(Bigeye Shiner)	(5)	Teaching Collection
<i>Labidesthes sicculus</i>	(Brook Silverside)	(3)	Teaching Collection

Current River

US 60, Van Buren Access

N 36.99232, W - 91.0134

Carter County, MO

Habitat: River

Collectors: Allison Hullinger, Tyler Dubin, Brady Bunton, Deann Harreld, Lewis Kellogg, Jared Lytle, Dillon Barton, McKenzie May, Jesse Morland, Thomas Myers, Thomas Westerhaus, Samantha Young, James Triplett

Species Collected:

Scientific Name	Common Name	#	Location
<i>Fundulus catenatus</i>	(Northern Studfish)	(1)	Teaching Collection
<i>Notropis nubilis</i>	(Ozark Minnow)	(2)	Teaching Collection
<i>Etheostoma zonale</i>	(Banded Darter)	(1)	Teaching Collection
<i>Notropis zonatus</i>	(Bleeding Shiner)	(9)	Teaching Collection
<i>Lepomis humilis</i>	(Orangespotted Sunfish)	(1)	Teaching Collection

<i>Moxostoma duquesnei</i>	(Black Redhorse)	(1)	Teaching Collection
<i>Etheostoma careuleum</i>	(Rainbow Darter)	(1)	Teaching Collection
<i>Hypentelium nigricans</i>	(Northern Hogsucker)	(2)	Teaching Collection
<i>Cyprinella galactura</i>	(White Tailed Shiner)	(6)	Teaching Collection
<i>Nocomis biguttatus</i>	(Horney Head Chub)	(1)	Teaching Collection

Kansas Species 2014 in Chronological Order

Permit # SC-108-2014 Permittee: James Triplett

Collected by Jesse Morland using rod and reel while in possession of a Kansas fishing license.

Common Name	Scientific Name	Date	# of Specimens	Exact location and Habitat	County	Specimen Disposition
Channel Catfish	<i>Ictalurus punctatus</i>	4/17/2014	1	Lakeside Park Pittsburg, Kansas 37.402933 N -94.714168 W	Crawford	Photographed and Released
Yellow Bullhead	<i>Ameiurus natalis</i>	4/29/2014	1	Bone Creek Reservoir Arma, Kansas 37.615414 N -94.765736 W	Crawford	Photographed and Released
Black Crappie	<i>Pomoxis nigromaculatus</i>	5/3/2014	1	Metcalf Ridge Golf Course Pond Louisburg, KS 38.594212 N -94.659995 W	Miami	Photographed and Released

Alabama Species 2014

Genus Species	Total Number	Common Name
1. <i>Urophycis regius</i>	6	Spotted Hake
2. <i>Ctenogobius boleosoma</i>	20	Darter Goby
3. <i>Membras martinica</i>	1	Rough Silverside
4. <i>Menidia peninsulae</i>	7	Tidewater Silverside
5. <i>Poecilia latipinna</i>	10	Sailfin Molly
6. <i>Mugil curema</i>	35	White Mullet
7. <i>Mugil cephalus</i>	1	Stripped Mullet
8. <i>Leiostamus xanthurus</i>	35	Spot Croaker
9. <i>Cyprinodon variegatus</i>	1	Sheepshead Minnow
10. <i>Urophycis floridana</i>	5	Southern Hake
11. <i>Lepophidium pheromystax</i>	5	Blackedge Cusk-eel
12. <i>Fundulus grandis</i>	3	Gulf Killifish
13. <i>Trachurus lathami</i>	1	Rough Scad
14. <i>Brevoortia patromus</i>	19	Gulf Menhaden
15. <i>Ariopsis felis</i>	6	Hardhead Catfish
16. <i>Menticirrhus littoralis</i>	2	Gulf Kingfish
17. <i>Lutjanus campechanus</i>	1	Red Snapper
18. <i>Prionotus rubio</i>	5	Blackwing Sea Robin
19. <i>Trichiurus lepturus</i>	1	Atlantic Cutlass Fish
20. <i>Spoeoroides parvus</i>	4	Least Puffer
21. <i>Stellifer laceolatus</i>	1	Star Drum
22. <i>Cynoscion arenarius</i>	10	Sand Sea trout
23. <i>Peprilus triacnathus</i>	8	Gulf Butterfish
24. <i>Diplectum bivittatum</i>	8	Dwarf Sand perch
25. <i>Mentirrhys americanus</i>	2	Southern Kingfish
26. <i>Prionotus tribulus</i>	1	Bighead Sea Robin
27. <i>Etropus crossotus</i>	5	Fringed Flounder
28. <i>Citharichthys macrops</i>	2	Spotted Whiff

29. <i>Syacium papillosum</i>	4	Dusky Flounder
30. <i>Diplectum formosum</i>	8	Sand Perch
31. <i>Anchoa mitchilli</i>	21	Bay Anchovy
32. <i>Stenotomus caprinus</i>	6	Long Spine Porgy
33. <i>Dasyatis sabina</i>	1	Atlantic Stingray
34. <i>Micropogonias undulates</i>	1	Atlantic Croaker
35. <i>Trinectes maculatus</i>	1	Hogchoaker
36. <i>Lagodon rhomboids</i>	5	Pinfish
37. <i>Dorosoma Pretnense</i>	8	Threadfin Shad
38. <i>Ophidion josephi</i>	1	Crested Cusk-eel
39. <i>Archosargus probatocephalus</i>	-	Sheepshead
40. <i>Synodus foetens</i>	-	Inshore Lizardfish
41. <i>Hipposcampus erectus</i>	-	Lined Seahorse
42. <i>Sphyræna guachancho</i>	-	Guaguanche
43. <i>Paralichthys lethostigma</i>	3	Southern Flounder
44. <i>Gobiesox strumosus</i>	2	Skillet Fish
45. <i>Thunnus atlanticus</i>	-	Black-fin Tuna
46. <i>Fundulus pulvereus</i>	1	Bayou Killifish
47. <i>Adinia xenic</i>	3	Diamond Killifish
48. <i>Lucania parva</i>	1	Rainwater Killifish
49. <i>Jenkinsia lamprotaenia</i>	1	Dwarf Herring
50. <i>Fundulus majalis</i>	3	Striped Killifish
51. <i>Dormitator maculatus</i>	1	Fat Sleeper
52. <i>Mosquito Fish</i>	1	Mosquito Fish
53. <i>Gobiosoma boscii</i>	4	Naked Goby
54. <i>Paralichthys squamilentus</i>	1	Broad Flounder
55. <i>Sciaenops ocellatus</i>	-	Red Drum
56. <i>Symphurus plagiusa</i>	-	Black Cheek Tongue Fish
57. <i>Scomberomorus maculatus</i>	-	Spanish Mackerel

Missouri Species 2014

Genus Species	Total Number	Common Name
1. <i>Moxostoma duquesnei</i>	1	Black Redhorse
2. <i>Hypentelium nigricans</i>	4	Northern Hogsucker
3. <i>Campostoma anomalum</i>	9	Central Stoneroller
4. <i>Campostoma oligolepis</i>	2	Largescale Stoneroller
5. <i>Cyprinella galactura</i>	3	Whitetail Shiner
6. <i>Cyprinella venusta</i>	7	Blacktail Shiner
7. <i>Hybopsis dissimilis</i>	1	Streamline Chub
8. <i>Luxilus cardinalis</i>	13	Cardinal Shiner
9. <i>Luxilus cornutus</i>	2	Striped Shiner
10. <i>Luxilus pilsbryi</i>	4	Duskystripe Shiner
11. <i>Nocomis asper</i>	1	Redspot Chub
12. <i>Nocomis biguttatus</i>	5	Horneyhead Chub
13. <i>Notropis amblops</i>	1	Bigeye Chub
14. <i>Notropis boops</i>	6	Bigeye Shiner
15. <i>Notropis nubilus</i>	8	Ozark Minnow
16. <i>Notropis percobromus</i>	4	Carmine Shiner
17. <i>Notropis texanus</i>	6	Weed Shiner
18. <i>Notropis zonatus</i>	9	Bleeding Shiner
19. <i>Phoxinus erythrogaster</i>	1	Redbelly Dace
20. <i>Pimphales notatus</i>	4	Bluntnose Minnow
21. <i>Noturus albater</i>	3	Ozark Madtom
22. <i>Noturus exilis</i>	5	Slender Madtom
23. <i>Oncorhynchus mykiss</i>	4	Rainbow Trout
24. <i>Labidesthes sicculus</i>	3	Brook Silverside
25. <i>Gambusia affinis</i>	2	Mosquito fish
26. <i>Fundulus olivaceus</i>	7	Blackspotted Topminnow
27. <i>Fundulus catenatus</i>	7	Northern Studfish
28. <i>Morone chrysops</i>	-	White Bass

29. <i>Lepomis cyanellus</i>	1	Green Sunfish
30. <i>Lepomis humilus</i>	1	Orangespotted Sunfish
31. <i>Lepomis macrochirus</i>	3	Bluegill
32. <i>Lepomis megalotis</i>	6	Longear Sunfish
33. <i>Micropterus salmoides</i>	1	Largemouth Bass
34. <i>Ammycrypta vivax</i>	-	Scaly Sand Darter
35. <i>Etheostoma careuleum</i>	7	Rainbow Darter
36. <i>Etheostoma cragini</i>	-	Arkansas Darter
37. <i>Etheostoma flabellare</i>	3	Fantail Darter
38. <i>Etheostoma microperca</i>	-	Least Darter
39. <i>Etheostoma punctulatum</i>	13	Stippled Darter
40. <i>Etheostoma spectabile</i>	15	Orangethroat Darter
41. <i>Etheostoma zonale</i>	1	Banded Darter
42. <i>Percina caprodes</i>	5	Logperch
43. <i>Cottus carolinae</i>	2	Banded Sculpin
44. <i>Cottus hypselurus</i>	6	Ozark Sculpin

Kansas Species 2014

Genus Species	Total Number	Common Name
1. <i>Pomoxis nigromaculatus</i>	-	Black Crappie
2. <i>Ictalurus punctatus</i>	-	Channel Catfish
3. <i>Ameiurus natalis</i>	-	Yellow Bullhead

Photographs Alabama

Black Fin Tuna (Head) *Thunnus atlanticus*

3-19-14 Found Dead

Alabama, Mobile County; Billy Goat Ramp

GPS 30.27206 N, 88.08156 W

Class Collection



Inshore Lizardfish *Synodus foetens*

3-18-14 Released Alive

Alabama, Mobile County; Ocean Trawl

GPS 30.257584 N, 88.069925 W

Class Collection



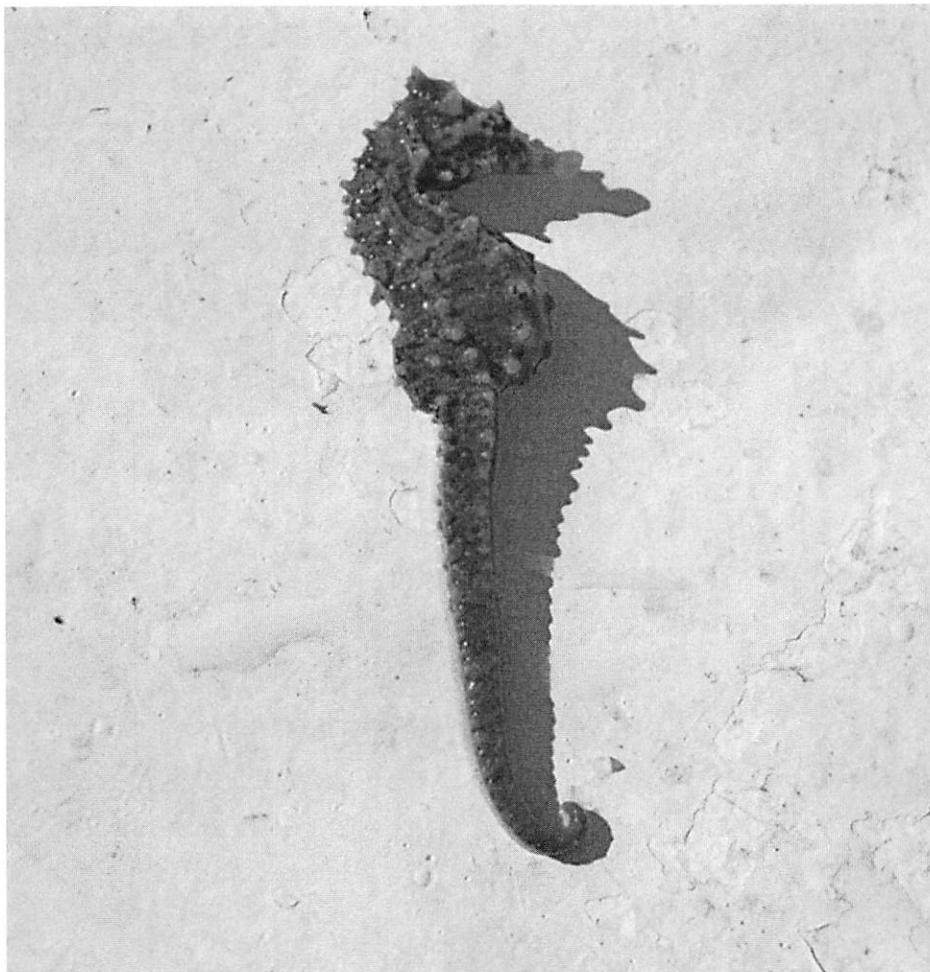
Lined Seahorse *Hippocampus ercectus*

3-18-14 Released Alive

Alabama, Mobile County; Ocean Trawl

GPS 30.257584 N, 88.069925 W

Class Collection



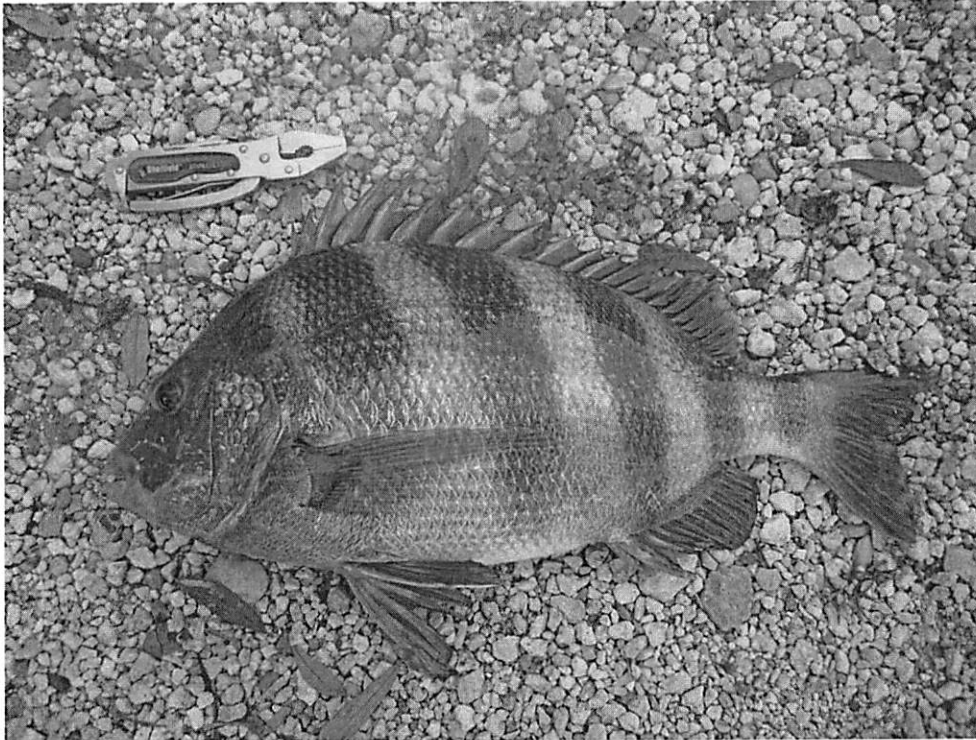
Sheepshead *Archosargus probatocephalus*

3-18-14 Photographed alive; Eaten

Alabama, Mobile County; Ocean Trawl

GPS 30.257584 N, 88.069925

Class Collection



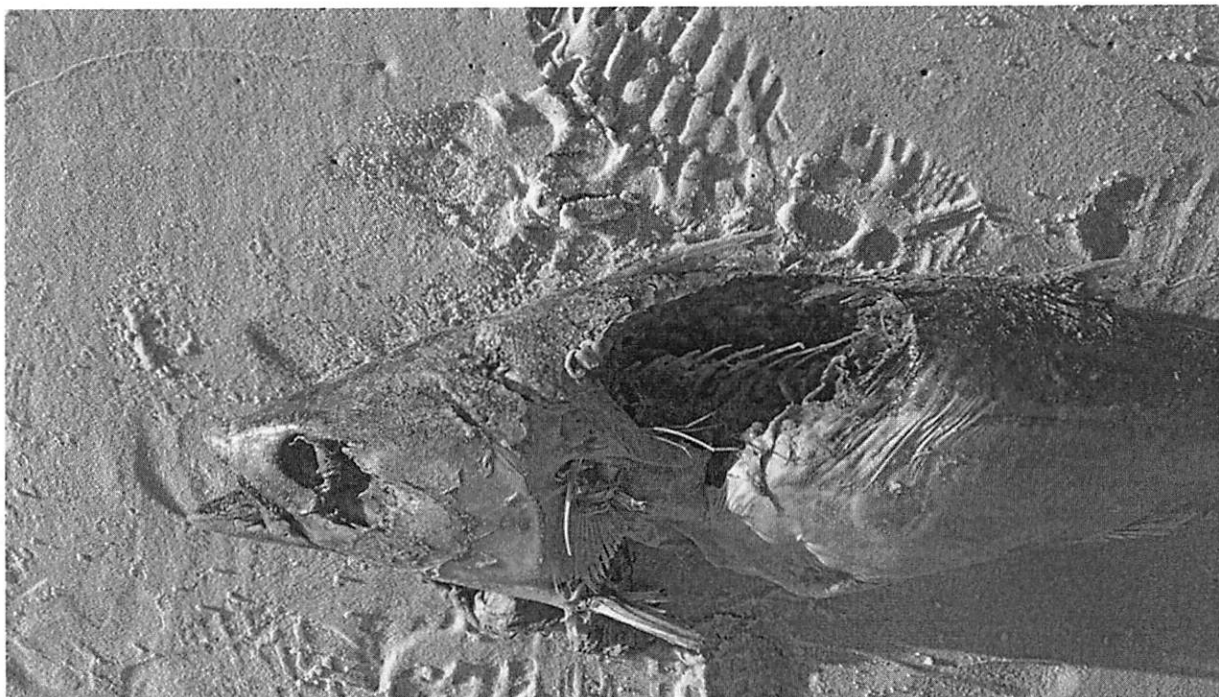
Spanish Mackerel *Scomberomorus maculatus*

3-20-14 Found Dead

Alabama, Mobile County; Billy Goat Ramp

GPS 30.27206 N, 88.08156 W

Class Collection



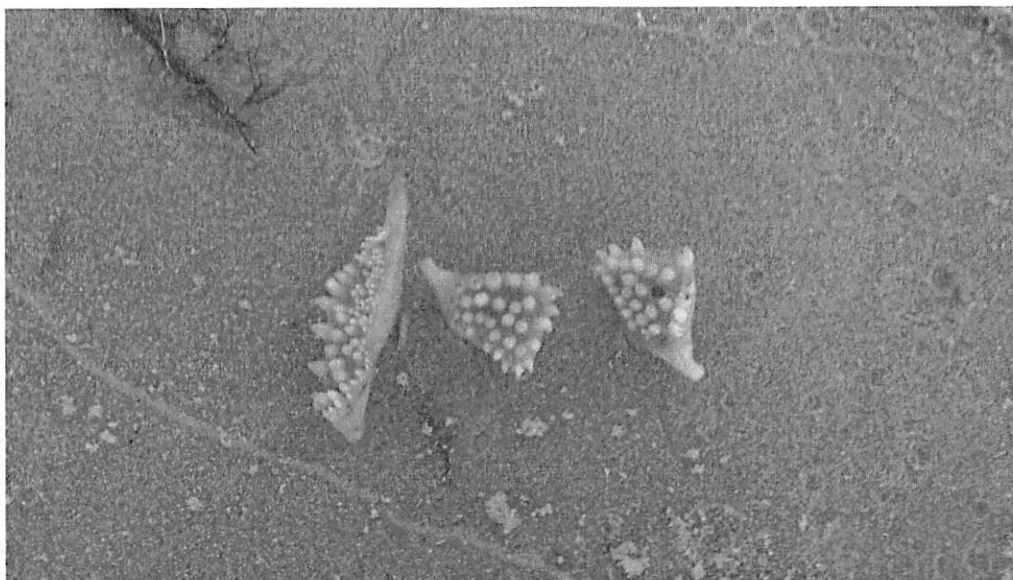
Red-Drum (teeth) *Sciaenops ocellatus*

3-20-14 Found Dead

Alabama, Mobile County; Campsite Beach

GPS 30.27206 N, 88.08156 W

Class Collection



Missouri
Photographs

White Bass *Morone chrysops*

4/12/2014 Found Dead

GPS N37°04'18.12 W94°06'35.66

Old US 66, Jasper County; Center Creek

Class Collection



Arkansas Darter *Etheostoma cragini*

4/12/2014 Released Alive

Old US 66 Jasper County; Center Creek

GPS N37°04'18.12 W94°06'35.66

Class Collection



Least Darter *Etheostoma microperca*

4/12/2014 Released Alive

Old US 66 Jasper County; Center Creek

GPS N37°04'18.12 W94°06'35.66

Class Collection



Red Spot Chub *Nocomis asper*

4/12/2014 Released Alive

Old US 66 Jasper County; Center Creek

GPS N37°04'18.12 W94°06' 35.66

Class Collection



Scaly Sand Darter *Ammycrypta vivax*

4/13/2014 Released Alive

MO 34, Mill Spring, Wayne County; Black River

GPS N 36.99232 W -91.01342

Class Collection



Kansas Photographs

Black Crappie *Pomoxis nigromaculatus*

5/3/2014 Miami County; Photographed and Released

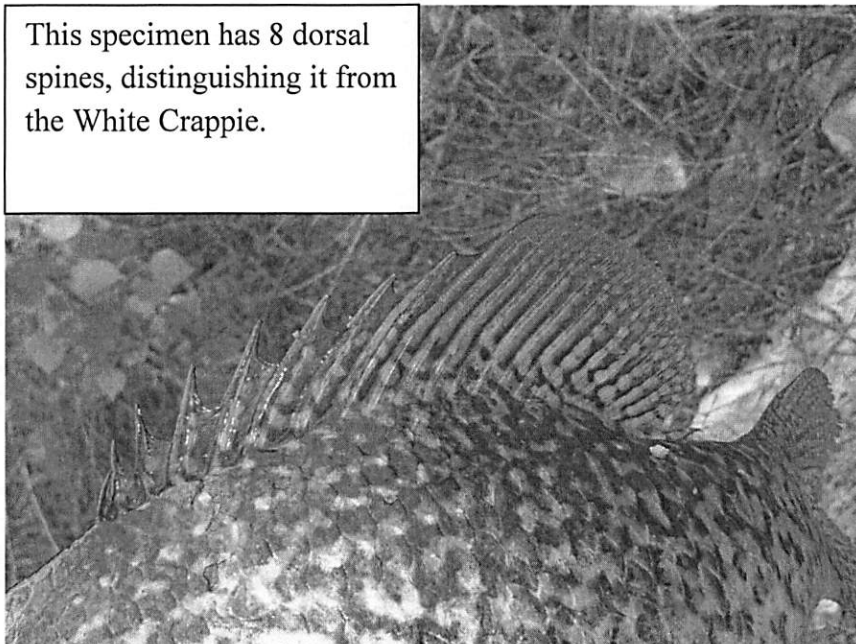
Metcalf Ridge Golf Course Pond, Louisburg, KS

GPS 38.594212 N, -94.659995 W

Collected by Jesse Morland



This specimen has 8 dorsal spines, distinguishing it from the White Crappie.



Channel Catfish *Ictalurus punctatus*

4/17/2014 Crawford County, Photographed and Released

Lakeside Park; Pittsburg, Kansas

GPS 37.402933 N, -94.714168 W

Collected by Jesse Morland



Yellow Bullhead *Ameiurus natalis*

4/29/2014 Crawford County Photographed and Released

Bone Creek Reservoir; Arma, Kansas

GPS 37.615414 N -94.765736 W

Collected by Jesse Morland

