

Ichthyology Field Notebook

Dr. Triplett

Logan VanOverschelde

Part I.

75 Species total:

Order: Myliobatiformes	Location:
Family: Dasyatidae	
Species: <i>Dasyatis sabina</i>	Sam Young's Collection
Order: Lepisosteiformes	
Family: Lepisosteidae	
Species: <i>Lepisosteus osseus</i>	Deceased
Order: Clupeiformes	
Family: Clupeidae	
Species: <i>Brevoortia patronus</i>	Teaching Collection
<i>Dorosoma petenense</i>	Teaching Collection
<i>Jenkinsia lamprotaenia</i>	Teaching Collection
Family: Engraulidae	
Species: <i>Anchoa mitchilli</i>	Teaching Collection
Order: Cypriniformes	
Family: Catostomidae	
Species: <i>Moxostoma duquesnei</i>	Teaching Collection
Family: Cyprinidae	
Species: <i>Campostoma anomalum</i>	Teaching Collection
<i>Cypirella camura</i>	Teaching Collection
<i>Cypirnella spilopectera</i>	Released
<i>Ctenopharyngodon idella</i>	Pictures
<i>Luxilus cardinalis</i>	Teaching Collection
<i>Luxilus pilsbryi</i>	Teaching Collection
<i>Notropis nubilus</i>	Released
<i>Notropis percobromus</i>	Logan's Collection
<i>Pimphales notatus</i>	Released
<i>Pimphales vigilax</i>	Released
Family: Fundulidae	
Species: <i>Fundulus notatus</i>	Released
Order: Siluriformes	
Family: Ictaluridae	
Species: <i>Noturus exilis</i>	Released
Family: Ariidae	

Species: *Ariopsis felis*

Teaching Collection

Order: Aulopiformes

Family: Synodontidae

Species: *Synodus foetens*

Picture

Order: Gadiformes

Family: Merlucciidae

Species: *Urophycis regia*

Teaching Collection

Family: Physidae

Species: *Urophycis floridana*

Teaching Collection

Order: Ophidiiformes

Family: Ophidiidae

Species: *Lepophidium brevibarbe*

Teaching Collection

Ophidion josephi

Teaching Collection

Ophidion welshi

Teaching Collection

Order: Pleuronectiformes

Family: Achiridae

Species: *Trinectes maculatus*

Teaching Collection

Family: Cynoglossidae

Species: *Symphurus plagiusa*

Teaching Collection

Family: Paralichthyidae

Species: *Citharichthys macrops*

Teaching Collection

Etropus crossotus

Teaching Collection

Paralichthys squamilentus

Teaching Collection

Syacium papillosum

Teaching Collection

Order: Antheriniformes

Family: Atherinopsidae

Species: *Membras martinica*

Teaching Collection

Menidia peninsulae

Teaching Collection

Family: Atherinidae

Species: *Labidesthes sicculus*

Teaching Collection

Order: Cyprinodontiformes

Family: Cyprinodontidae

Species: *Cyprinodon variegatus*

Teaching Collection

Family: Poeciliidae	
Species: <i>Poecilia latipinna</i>	Teaching Collection
Family: Fundulidae	
Species: <i>Adinia xenica</i>	Teaching Collection
<i>Fundulus notatus</i>	Released
<i>Fundulus grandis</i>	Teaching Collection
<i>Fundulus majalis</i>	Teaching Collection
<i>Fundulus pulvereus</i>	Teaching Collection
<i>Lucania parva</i>	Teaching Collection
Order: Mugiliformes	
Family: Mugilidae	
Species: <i>Mugil curema</i>	Teaching Collection
<i>Mugil cephalus</i>	Teaching Collection
Order: Gobiesociformes	
Family: Gobiesocidae	
Species: <i>Gobiesox strumosus</i>	Teaching Collection
Order: Tetraodontiformes	
Family: Tetraodontidae	
Species: <i>Sphoeroides parvus</i>	Teaching Collection
Order: Perciformes	
Family: Eleotridae	
Species: <i>Dormitator maculatus</i>	Teaching Collection
Family: Gobiidae	
Species: <i>Ctenogobius boleosoma</i>	Teaching Collection
<i>Gobiosoma bosci</i>	Teaching Collection
Family: Syngnathidae	
Species: <i>Hippocampus erectus</i>	Picture
Family: Trichiuridae	
Species: <i>Trichiurus lepturus</i>	Teaching Collection
Family: Stromateidae	
Species: <i>Peprilus burti</i>	Teaching Collection
Family: Scombridae	
Species: <i>Scomberomorus maculatus</i>	Picture
<i>Thunnus atlanticus</i>	Picture
Family: Sphyrnidae	
Species: <i>Sphyrna guachancho</i>	Teaching Collection

Family: Lutjanidae	
Species: <i>Lutjanus campechanus</i>	Teaching Collection
Family: Sciaenidae	
Species: <i>Cynoscion arenarius</i>	Teaching Collection
<i>Leiostomus xanthurus</i>	Teaching Collection
<i>Menticirrhus americanus</i>	Teaching Collection
<i>Menticirrhus littoralis</i>	Teaching Collection
<i>Micropogonias undulatus</i>	Teaching Collection
<i>Sciaenops ocellatus</i>	Pictures
<i>Stellifer lanceolatus</i>	Teaching Collection
Family: Sparidae	
Species: <i>Archosargus probatocephalus</i>	Teaching Collection
<i>Lagodon rhomboides</i>	Teaching Collection
<i>Stenotomus caprinus</i>	Teaching Collection
Family: Centrarchidae	
Species: <i>Lepomis humilus</i>	Teaching Collection
<i>Micropterus dolomieu</i>	Teaching Collection
<i>Micropterus salmoides</i>	Teaching Collection
Family: Carangidae	
Species: <i>Trachurus lathami</i>	Teaching Collection
Family: Serranidae	
Species: <i>Diplectrum bivittatum</i>	Teaching Collection
<i>Perca formosa</i>	Logan's Collection
Family: Percidae	
Species: <i>Etheostoma spectabile</i>	Released
<i>Etheosoma nigrum</i>	Released
<i>Etheosoma blenoides</i>	Released
<i>Etheostoma zonale</i>	Released
<i>Percina caprodes</i>	Released
Order: Scorpaeniformes	
Family: Triglidae	
Species: <i>Prionotus rubio</i>	Teaching Collection
<i>Prionotus tribulus</i>	Teaching Collection

Part II.

3/17/2014

Billy Goat Ramps

30.27206 N, 88.08156 W

Mobile, Alabama

Habitat: Shoreline/boat ramps

Species Collected: *Urophycis regius* (Spotted Hake) (1)

Ctenogobius boleosoma (Darter Goby) (1)

Membras martinica (Rough Silverside) (1)

Menidia peninsulae (Tidewater Silverside) (4)

Poecilia latipinna (Sailfin Molly) (4)

Mugil cephalus (Stripped Mullet) (43)

Mugil curema (White Mullet) (43)

Leiostamus xanthurus (Spot Croaker) (24)

Cyprinodon variegatus (Sheepshead Minnow) (1)

Urophycis floridana (Southern Hake) (2)

Lepophidium pheromystax (Blackedge Cuskeel) (4)

Fundulus grandis (Gulf Killifish) (1)

Trachurus lathami (Rough Scad) (1)

Brevoortia patronus (Gulf Menhaden) (19)

Collectors: Allison Hullinger, Tyler Dubin, Briana Hall, Deann Harreld, Lewis Kellogg, Jared Lytle, Logan VanOverschelde, McKenzie May, Jesse Morland, Thomas Myers, Stephanie Reynolds, Samantha Young, Valerie Weilert, Cory Brown, Sydney Hale, James Triplett

3/18/2014

Ocean Trawl

30.257584 N, 88.069925 W

Mobile, Alabama

Habitat: Open Sea

Species Collected: *Ariopsis felis* (Hardhead Catfish) (6)

Menticirrhus littoralis (Gulf Kingfish) (1)

Lutjanus campechanus (Red Snapper) (1)

Trichiurus lepturus (Atlantic Cutlassfish) (1)

Prionotus rubio (Blackwing Sea Robin) (5)

Spoeoroides parvus (Least Puffer) (4)

Stellifer laceolatus (Star Drum) (1)

Cynoscion arenarius (Sand Sea Trout) (10)

Peprilus triacnathus (Gulf Butterfish) (5)

Diplectum bivittatum (Dwarf Sand Perch) (8)
Mentirrhys americanus (Southern Kingfish) (2)
Prionotus tribulus (Bighead Sea Robbin) (1)
Etropus crossotus (Fringed Flounder) (5)
Citharichthys macrops (Spotted Whiff) (2)
Syacium papillosum (Dusky Flounder) (4)
Diplectum formosum (Sand Perch) (8)
Anchoa mitchilli (Bay Anchovy) (19)
Stenotomus caprinus (Long Spine Porgy) (6)
Dasyatis Sabina (Atlantic Stingray) (1)
Micropogonias undulates (Atlantic Croaker) (1)
Trinectes maculates (Hogchoaker) (1)
Lagodon rhomboids (Pinfish) (1)
Dorosoma Pretnense (Threadfin Shad) (8)
Ophidion josephi (Crested Cusk-eel) (1)
Urophycis regia (Spotted Hake) (5)
Merluccius australis (Southern Hake) (3)
Archosargus probatocephalus (Sheapshed)
Synodus foetens (Inshore Lizardfish)
Hippocampus ercectus (Lined Seahorse)
Sphyræna guachancho (Guaguanche) (1)
 Collectors: Allison Hullinger, Tyler Dubin, Briana Hall, Deann Harreld, Lewis Kellogg, Jared Lytle, Logan VanOverschelde, McKenzie May, Jesse Morland, Thomas Myers, Stephanie Reynolds, Samantha Young, Valerie Weilert, Cory Brown, Sydney Hale, James Triplett

3/19/14

Campsite Beach

30.246176 N, 88.082806

Mobile, Alabama

Habitat: Beach

Species: *Mugil cephalus* (Stripped Mullet) (9)

Peprilus burti (Gulf Butterfish) (3)

Menticirrhus littoralis (Gulf Kingfish) (1)

Anchoa mitchilli (Bay Anchovy) (1)

Paralichthys lethostigma (Southern Flounder) (2)

Gobiesox strumosus (Skillet Fish) (1)

Collectors: Allison Hullinger, Tyler Dubin, Briana Hall, Deann Harreld, Lewis Kellogg, Jared Lytle, Logan VanOverschelde, McKenzie May, Jesse Morland, Thomas Myers, Stephanie Reynolds, Samantha Young, Valerie Weilert, Cory Brown, Sydney Hale, James Triplett

3/19/14

Billy Goat Ramp

30.27206 N, 88.08156 W

Mobile, Alabama

Habitat: Boat dock/shoreline

Species: *Thunnus atlanticus* (Black Fin Tuna) (1)

Ctenogobius boleosoma (Darter Goby) (7)

Fundulus pulverous (Bayou Killifish) (1)

Adinia xenic (Diamond Killifish) (3)

Menidia peninsulae (Tidewater Silverside) (2)

Fundulus grandis (Gulf Killifish) (2)

Collectors: Allison Hullinger, Tyler Dubin, Briana Hall, Deann Harreld, Lewis Kellogg, Jared Lytle, Logan VanOverschelde, McKenzie May, Jesse Morland, Thomas Myers, Stephanie Reynolds, Samantha Young, Valerie Weilert, Cory Brown, Sydney Hale, James Triplett

3/19/14

Airport Marsh

30.27206 N, 88.12998 W

Mobile, Alabama

Habitat: Marsh

Species: *Cyprinodon variegates* (Sheepshead Minnow) (10)

Mugil curema (White Mullet) (11)

Leiostomus xanthurus (Spot Croaker) (11)

Lucania parva (Rainwater Killifish) (1)

Jenkinsia lamprotaenia (Dwarf Herring)

Fundulus majalis (Striped Killifish) (3)

Collectors: Allison Hullinger, Tyler Dubin, Briana Hall, Deann Harreld, Lewis Kellogg, Jared Lytle, Logan VanOverschelde, McKenzie May, Jesse Morland, Thomas Myers, Stephanie Reynolds, Samantha Young, Valerie Weilert, Cory Brown, Sydney Hale, James Triplett

3/19/14

Tidal Ditches

30.27206 N, 88.08156 W

Mobile, Alabama

Habitat: Runoff Ditch

Species: *Poecilia latipinna* (Sailfin Molly) (6)

Dormitator maculatus (Fat Sleeper) (1)

Collectors: Allison Hullinger, Tyler Dubin, Briana Hall, Deann Harreld, Lewis Kellogg, Jared Lytle, Logan VanOverschelde, McKenzie May, Jesse Morland, Thomas Myers, Stephanie Reynolds, Samantha Young, Valerie Weilert, Cory Brown, Sydney Hale, James Triplett

3/20/14

Lagoon Park Launch

30.255143N, 87.715166W

Mobile, Alabama

Habitat: Lagoon

Lagodon rhomboids (Pinfish) (4)

Ctenogobius boleosoma (Darter Goby) (6)

Menidia peninsulae (Tidewater Silverside) (1)

Anchoa mitchilli (Bay Anchovy) (1)

Gobiosoma boscii (Naked Gobi) (1)

Symphurus plagiatus (Black Cheek Tongue Fish) (2)

Collectors: Allison Hullinger, Tyler Dubin, Briana Hall, Deann Harreld, Lewis Kellogg, Jared Lytle, Logan VanOverschelde, McKenzie May, Jesse Morland, Thomas Myers, Stephanie Reynolds, Samantha Young, Valerie Weilert, Cory Brown, Sydney Hale, James Triplett

3/20/14

Causeway

30.322711 N, 88.135942

Mobile, Alabama

Habitat: Causeway/man-made habitat

Species: *Paralichthys lethostigma* (Southern Flounder) (1)

Mugil cephalus (Striped Mullet) (1)

Paralichthys squamilentus (Broad Flounder) (1)

Collectors: Allison Hullinger, Tyler Dubin, Briana Hall, Deann Harreld, Lewis Kellogg, Jared Lytle, Logan VanOverschelde, McKenzie May, Jesse Morland, Thomas Myers, Stephanie Reynolds, Samantha Young, Valerie Weilert, Cory Brown, Sydney Hale, James Triplett

3/20/14

Tidal Ditch

30.27206 N, 88.08156 W

Mobile, Alabama

Habitat: Run-off ditch

Species: *Gambusia affinis* (Mosquito fish) (1)

Collectors: Allison Hullinger, Tyler Dubin, Briana Hall, Deann Harreld, Lewis Kellogg, Jared Lytle, Logan VanOverschelde, McKenzie May, Jesse Morland, Thomas Myers, Stephanie Reynolds, Samantha Young, Valerie Weilert, Cory Brown, Sydney Hale, James Triplett

3/20/14

Mobile, Alabama

Billy Goat Ramp

30.27206 N, 88.08156 W

Habitat: Boat ramp/man-made habitat/shoreline

Species: *Scomberomorus maculatus* (Spanish Mackerel) (1)

Collectors: Allison Hullinger, Tyler Dubin, Briana Hall, Deann Harreld, Lewis Kellogg, Jared Lytle, Logan VanOverschelde, McKenzie May, Jesse Morland, Thomas Myers, Stephanie Reynolds, Samantha Young, Valerie Weilert, Cory Brown, Sydney Hale, James Triplett

3/20/14

Campsite Beach

30.27206 N, 88.08156 W

Mobile, Alabama

Habitat: Beach

Species: *Sciaenops ocellatus* (Red-Drum) (1)

Collectors: Allison Hullinger, Tyler Dubin, Briana Hall, Deann Harreld, Lewis Kellogg, Jared Lytle, Logan VanOverschelde, McKenzie May, Jesse Morland, Thomas Myers, Stephanie Reynolds, Samantha Young, Valerie Weilert, Cory Brown, Sydney Hale, James Triplett

4/27/14

Shoal Creek

Access at Schermerhorn Park in Galena Kansas

N 37.04485, W -94.63992

Cherokee County, KS

Habitat: Stream

Species: *Etheostoma spectabile* (Orangethroated Darter)

Notropis nubilus (Ozark Minnow)

Etheostoma zonale (Banded Darter)

Notropis percobromus (Carmine Shiner)

Percina caprodes (Logperch)

Cyprinella spiloptera (Spotfin Shiner)

Pimphales notatus (Bluntnose Minnow)

Campostoma anomalum (Central Stoneroller)

Luxilus cardinalis (Cardinal Shiner)

Pimphales vigilax (Bullhead Minnow)

Etheostoma nigrum (Johnny Darter)

Etheostoma blenoides (Greenside Darter)

Moturus exilis (Slender Madtom)

Micropterus dolomieu (Small Mouth Bass)

Lepomis megalotis (Longear Sunfish)

Ctenopharyngodon idella (Grass Carp)

Collectors: Samantha Young, Balsam Alessa, Thomas Westerhaus, Logan Vanoverschelde, Deanne Herald, Stephanie Reynolds, Valerie Weilert, James Triplett

4/27/14

Spring River

N 37.05613, W -94.70204

Cherokee County, KS

Habitat: Dammed River, below hydroelectric plant

Species: *Lepisosteus osseus* (Longnose Gar)

Fundulus notatus (Black Stripe Topminnow)

Lepomis humilis (Orangespotted Sunfish)

Collectors: Samantha Young, Balsam Alessa, Thomas Westerhaus, Logan Vanoverschelde, Deanne Herald, Stephanie Reynolds, Valerie Weilert, James Triplett

Part III.

Alabama: 57 Species: *Urophycis regius*, *Ctenogobius boleosoma*, *Membras martinica*, *Menidia peninsulae*, *Poecilia latipinna*, *Mugil cephalus*, *Leiostomus xanthurus*, *Cyprinodon variegates*, *Urophycis floridana*, *Lepophidium pheromystax*, *Fundulus grandis*, *Trachurus lathami*, *Brevoortia patronus*, *Ariopsis felis*, *Menticirrhus littoralis*, *Lutjanus campechanus*, *Prionotus rubio*, *Trichiurus lepturus*, *Cynoscion arenarius*, *Stellifer laceolatus*, *Peprilus triacnathus*, *Diplectum bivittatum*, *Menticirrhus americanus*, *Prionotus tribulus*, *Etropus crossotus*, *Citharichthys macrops*, *Syacium papillosum*, *Diplectum formosum*, *Anchoa mitchilli*, *Stenotomus caprinus*, *Dasyatis Sabina*, *Micropogonias undulates*, *Trinectes maculates*, *Lagodon rhomboids*, *Dorosoma Pretense*, *Ophidion josephi*, *Urophycis regia*, *Merluccius australis*, *Archosargus probatocephalus*, *Synodus foetens*, *Hippocampus ercectus*, *Sphyræna guachancho*, *Mugil cephalus*, *Peprilus burti*, *Menticirrhus littoralis*, *Paralichthys lethostigma*, *Anchoa mitchilli*, *Gobiosoma strumosus*, *Thunnus atlanticus*, *Ctenogobius boleosoma*, *Fundulus pulverous*, *Adinia xenic*, *Menidia peninsulae*, *Fundulus grandis*, *Cyprinodon variegates*, *Mugil curema*, *Leiostomus xanthurus*, *Lucania parva*, *Jenkinsia lamprotaenia*, *Fundulus majalis*, *Poecilia latipinna*, *Dormitator maculates*, *Gobiosoma bosci*, *Symphurus plagiusa*, *Gambusia affinis*, *Scomberomorus maculates*, *Sciaenops ocellatus*.

Kansas: 18: *Etheostoma spectabile*, *Notropis nubilus*, *Etheostoma zonale*, *Notropis percobromus*, *Percina caprodes*, *Pimphales notatus*, *Cyprinella spiloptera*, *Campostoma anomalum*, *Luxilus cardinalis*, *Pimphales vigilax*, *Etheostoma nigrum*, *Etheostoma blenoides*, *Moturus exilis*, *Micropterus dolomieu*, *Lepomis megalotis*, *Lepisosteus osseus*, *Fundulus notatus*, *Lepomis humilis*.

Part IV.

3/19/14

Billy Goat Ramp

30.27206 N, 88.08156 W

Mobile, Alabama

Thunnus atlanticus (Black-fin Tuna)



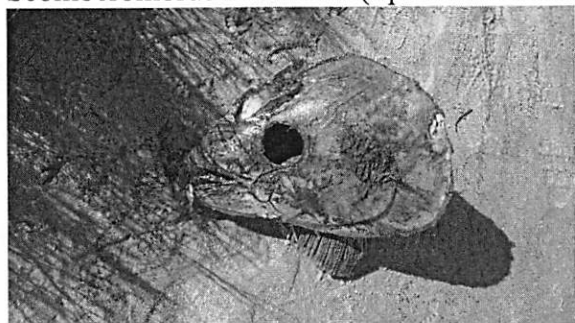
3/20/14

Billy Goat Ramp

30.27206 N, 88.08156 W

Mobile, Alabam

Scomberomorus maculatus (Spanish Mackerel)



3/20/14

Campsite Beach

30.27206 N, 88.08156 W

Mobile, Alabama

Sciaenops ocellatus (Red-Drum)

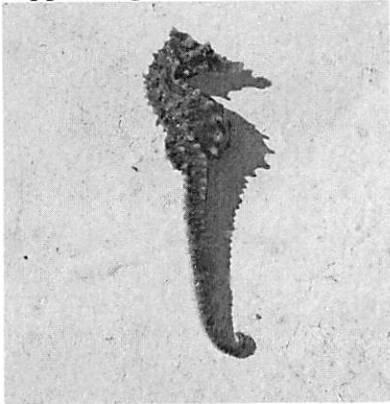


3/18/2014

Ocean Trawl
30.257584 N, 88.069925 W
Mobile, Alabama
Synodus foetens (Inshore Lizardfish)



3/18/2014
Ocean Trawl
30.257584 N, 88.069925 W
Mobile, Alabama
Hippocampus ercectus (Lined Seahorse)



4/27/14
Shoal Creek
Access at Schermerhorn Park in Galena Kansas
N 37.04485, W -94.63992
Cherokee County, KS
Ctenopharyngodon idella (Grass Carp)



Part V.

Species

Etheostoma spectabile
Etheostoma zonale
Percina caprodes
Campostoma anomalum
Cyprinella spiloptera
Pimphales vigilax
Luxilus cardinalis
Etheostoma blenoides
Moturus exilis
Micropterus dolomieu
Lepomis megalotis
Lepisosteus osseus
Fundulus notatus
Lepomis humilis

Disposition

Released at Collection Site
Released at Collection Site
Released at Collection Site
Released at Collection Site
Released at Collection Site
Released at Collection Site
Released at Collection Site
Released at Collection Site
Released at Collection Site
Released at Collection Site
Released at Collection Site
Deceased
Released at Collection Site
Released at Collection Site

Verification