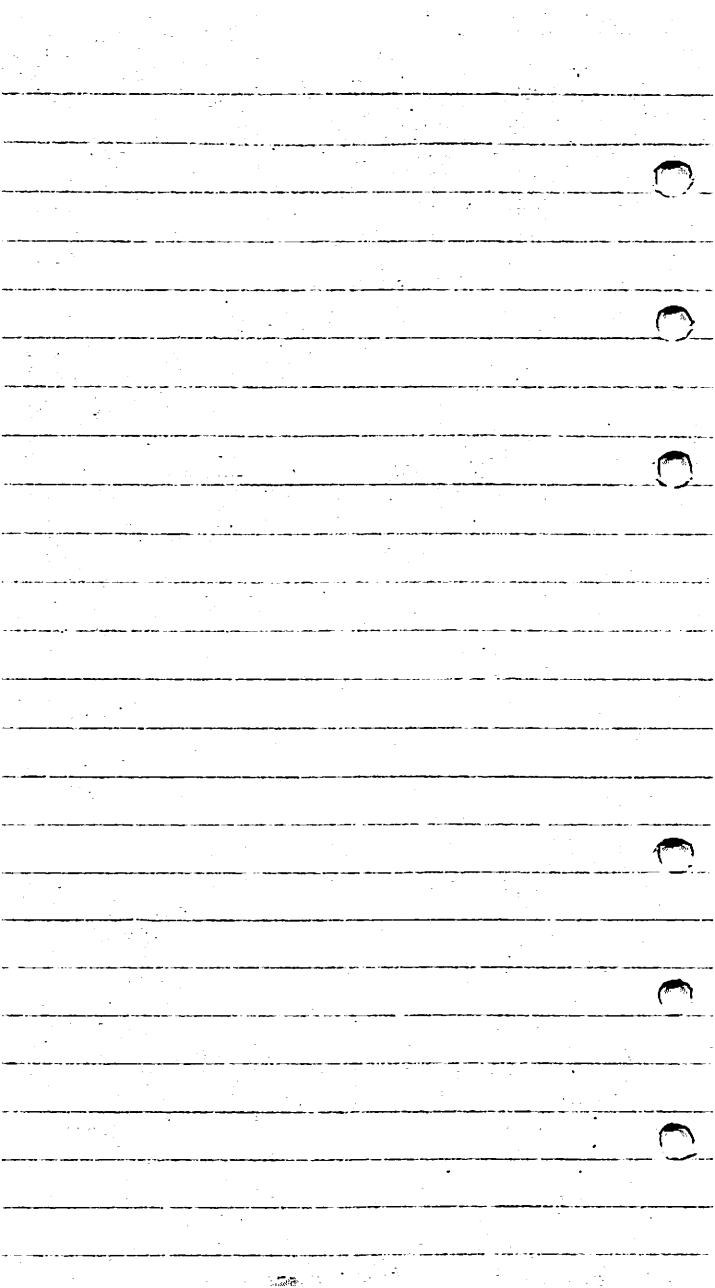


Ichthyology

79 total species

Scott Crupper



Family Petromyzontidae

Ichthyomzon castaneus

Family Lepisosteidae

Lepisosteus osseus

Family Clupeidae

Dorosoma petenese

Dorosoma cepedianum

Family Salmonidae

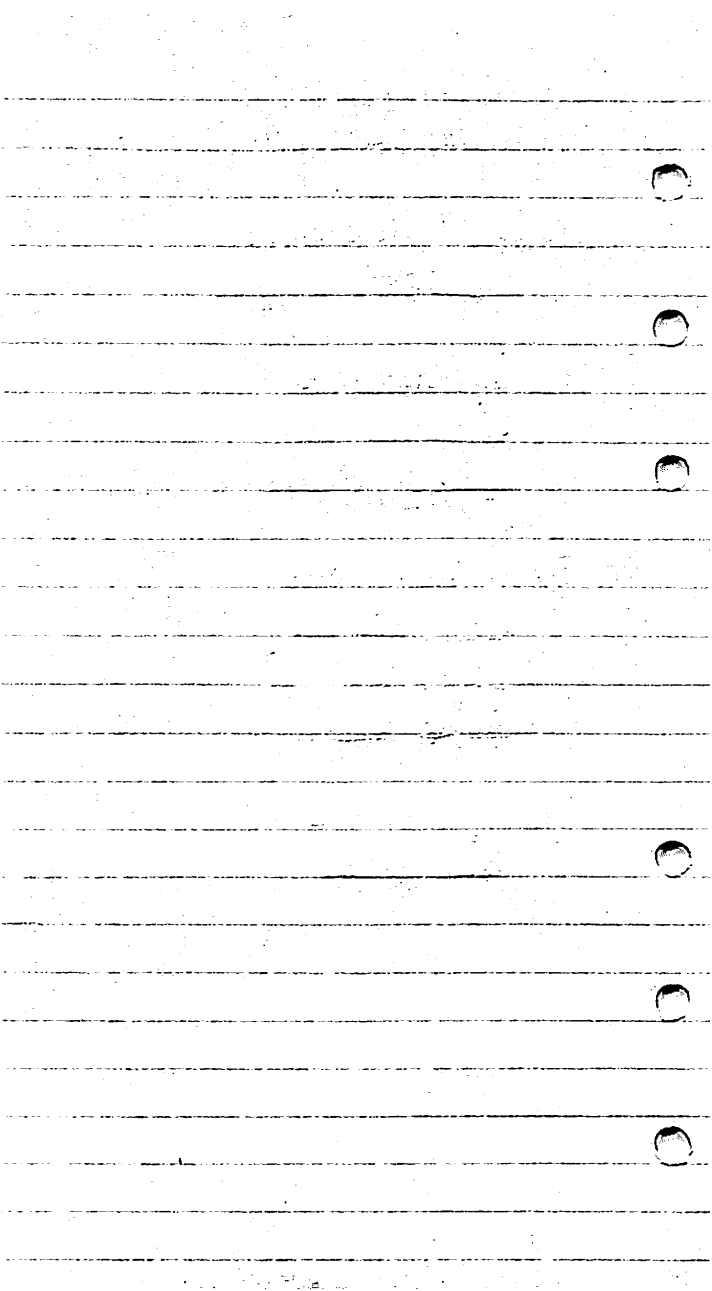
Salmo trutta

Salmo gairdneri

Salmo clarki

Family Esocidae

Esox lucius



Family Cyprinidae

Campostoma anomalum

Campostoma oligolepis

Notropis cornutus

Notropis pilsbryi

Notropis boops

Notropis zonatus

Notropis umbratilis

Notropis nubilis

Notropis chrysocephalus

Notropis rubellus

Notropis lutrensis

Notropis atherinoides

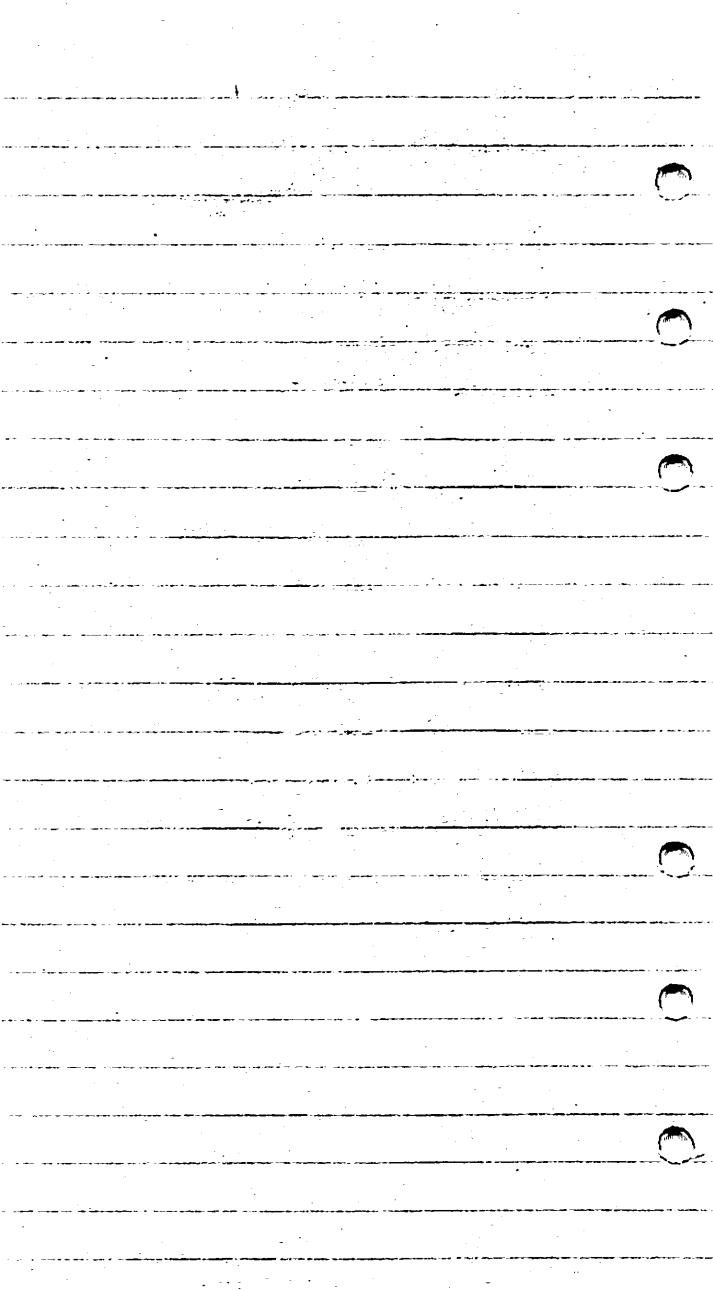
Pimephales notatus

Carassius auratus

Phoxinus erythrogaster

Notemigonus crysoleucas

Nocomis biguttatus



Family Catostomidae

Carpinus carpio

Minytrema melanops

Hypentelium nigricans

Catostomus commersoni

Moxostoma duquesnei

Family Ictaluridae

Ictalurus punctatus

Ictalurus melas

Ictalurus natalis

Noturus flavus

Noturus nocturnus

Noturus albatel

Noturus exilis

Pylodictis olivaris

Family Cyprinodontidae

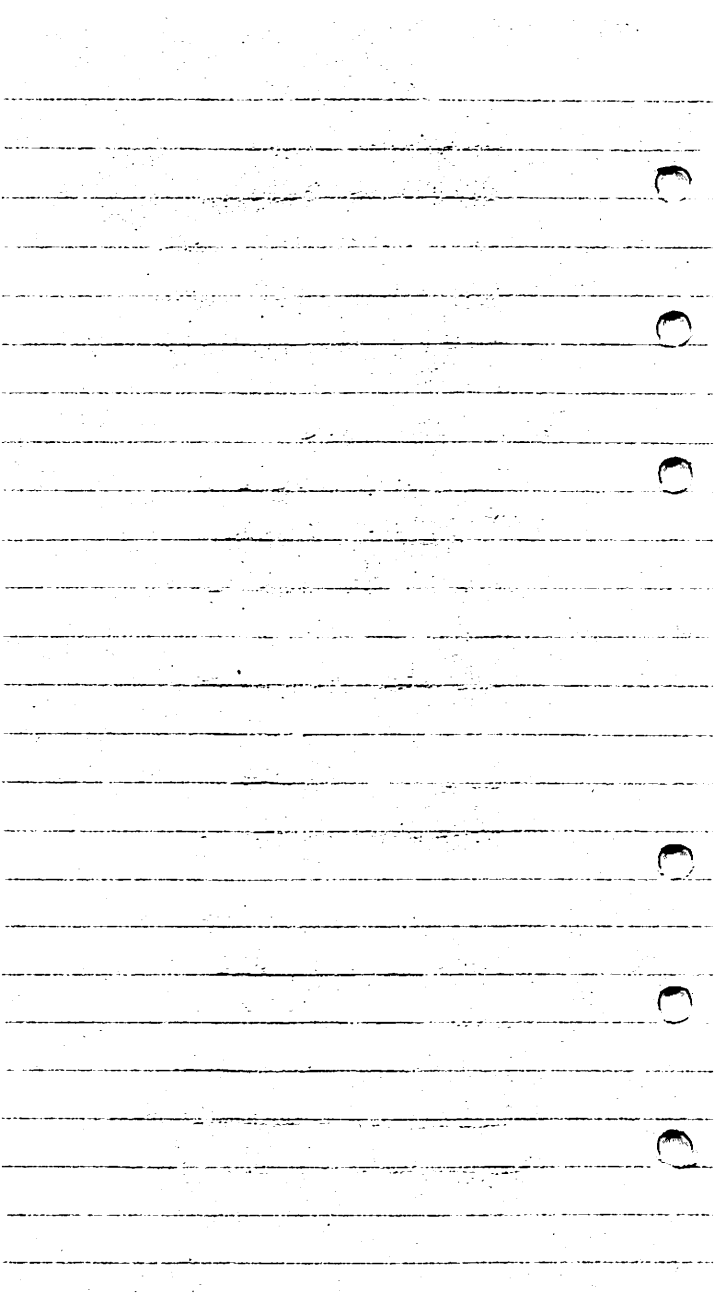
Fundulus coteratus

Fundulus notatus

Fundulus olivaceus

Fundulus similis

Cyprinodon variegatus



Family Poeciliidae

Gambusia affinis

Family Atherinidae

Labidesthes sicculus

menidia beryllina

Family Cottidae

Cottus bairdi

Cottus carolinae

Family Centrarchidae

Micropterus salmoides

Micropterus punctulatus

Micropterus dolomieu

Lepomis cyanelus

Lepomis megalotis

Lepomis punctatus

Lepomis marginatus

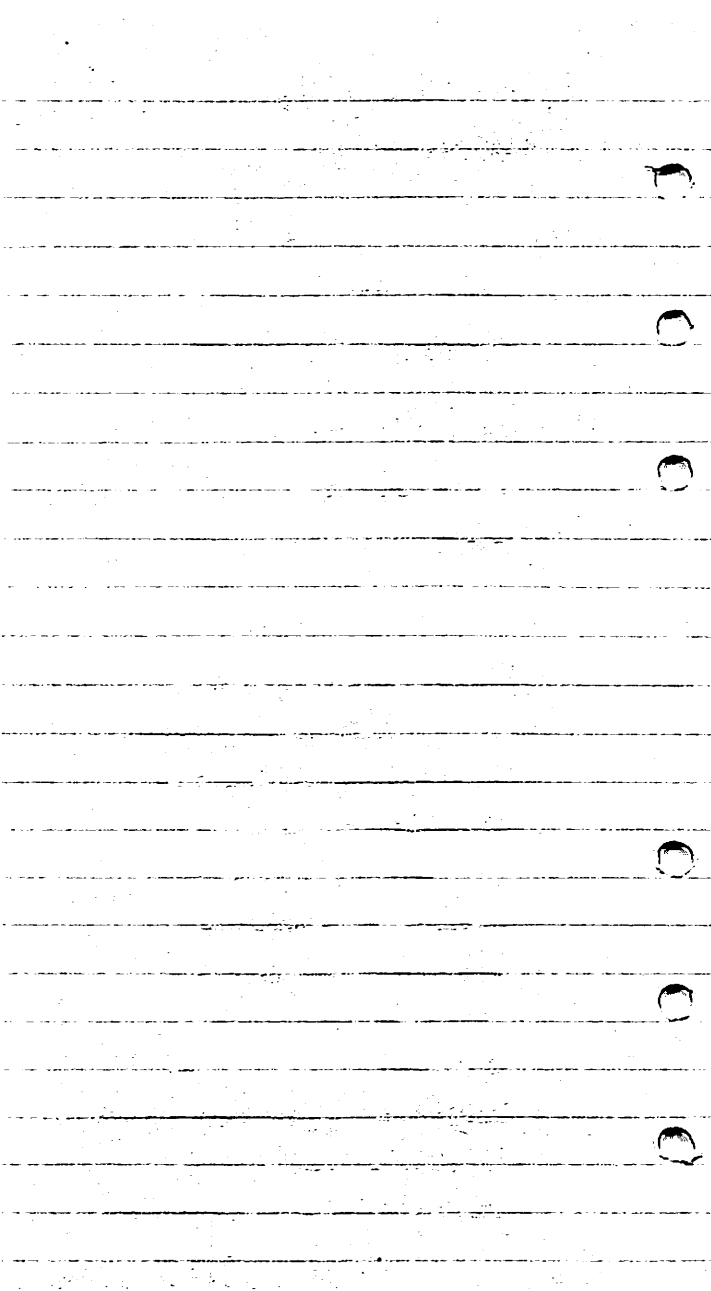
Lepomis gulosus

Lepomis macrochirus

Pomoxis nigromaculatus

Pomoxis annularis

Ambloplites rupestris



Family Percidae

Etheostoma caeruleum

Etheostoma cragini

Etheostoma stigmaeum

Etheostoma juliae

Etheostoma spectabile

Etheostoma whipplei

Etheostoma flabellone

Etheostoma nigrum

Etheostoma zonale

Etheostoma punctulatum

Percina phoxacephala

Percina caprodes

Notropis nubilis ← ? wrong

Stizostedion vitreum

Family Sciaenidae

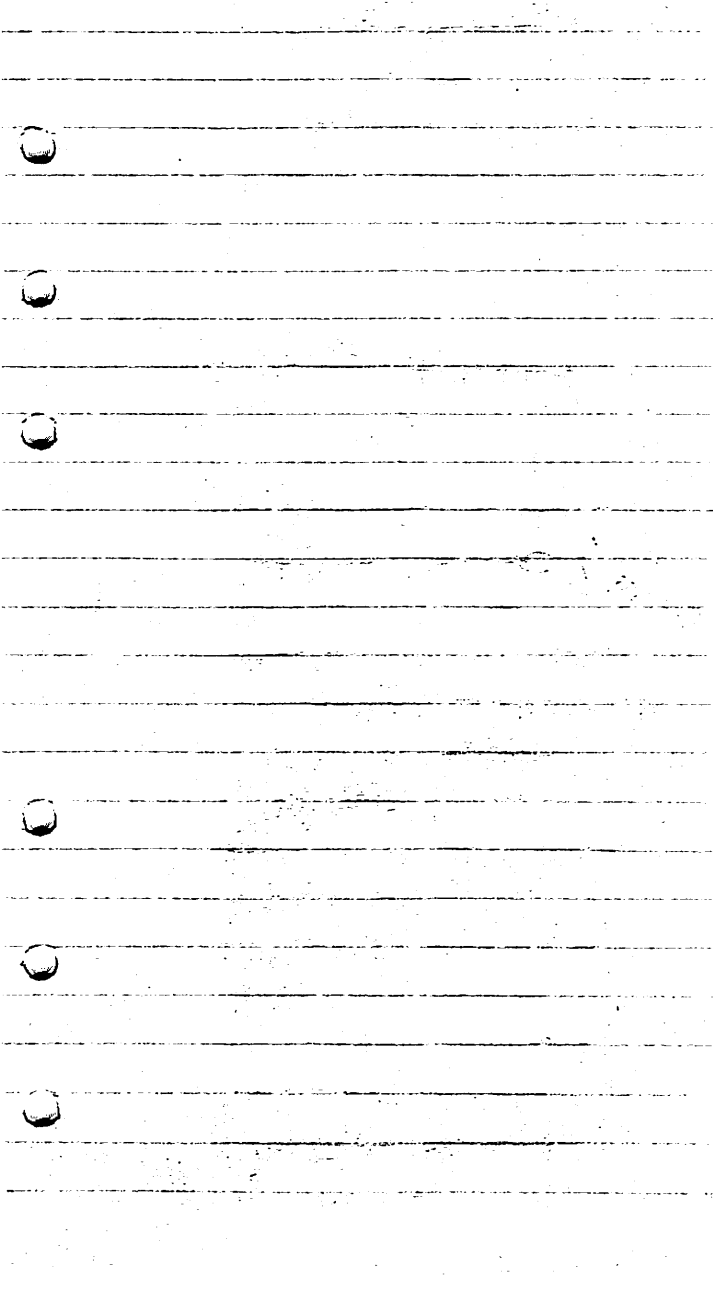
Aplodinotus grunniens

Texas fish

Micropogon undulatus

Gobionellus boleosoma

Mugil curema



3-8-86 Saturday

Elane Horsts pond. Approx 3 miles
east, $\frac{1}{2}$ miles north of Yates Center, Ks
T 25S R 16E S9

Water temp: 40°

Air temp: 55°

Very muddy bottom. A lot of
surface roughness due to wind.
Seined many tadpoles.

Lepomis cyanellus

3-9-86 Sunday

East Buffalo creek, Woodson Co., Ks.

T 26 S R 16 E S 32

Water Temp 41°

Air Temp 75°

Mostly muddy bottom w/ patches of rock.

Ictalurus melas Black bullhead

Minytrema melanops Spotted sucker

Percina caprodes Log Perch

Pomoxis annularis White crappie

Lepomis megalotis Longear Sunfish

3-10-86 Monday

Owl Creek, Woodson Co, Ks. Approx
1½ miles north of Yates Center.

T 24 S R 15 B S 35

Water Temp 40°

Air Temp 51°

Very muddy bottom. Seined a lot
of crawdads.

Notropis umbratilis - Redfin shiner

Ictalurus natalis - Yellow bullhead

Lepomis macrochirus - Bluegill

3-10-86 Monday

Big Sandy Creek, Woodson Co, KS.
approx 1 mile north, $1\frac{1}{2}$ miles
east of Woodson county State Lake.

T 26S R 14E S 1

Water Temp 40°

Air Temp 49°

Rocky bottom w/ a few riffles.

Pimephales notatus - Bluntnose minnow

Labidesthes sicculus - Brook silverside

Fundulus notatus - Blackstripe topminnow

3-11-86 Tuesday

Verdigris River, Greenwood Co, ks.
Approx 2 miles north of 54
highway on Quincy road

Water Temp 41°

Air Temp 54°

Rocky bottom, fast moving water

Noturus nocturnus - Freckled madfish

Notemigonus crysoleucas - Golden Shiner

3-14-86 Friday

Neosho River at the Neosho Falls
bridge, Woodson Co, Ks.

T 23S R 17E S 27

Water Temp 41°

Air Temp 58°

mostly rocky bottom.

Carpodacus carpio - River carpsucker

Noturus flavus - Stonecat

Campestris anomalum - Central Stoneroller

Aplodinotus grunniens - Freshwater Drumm.

4-20-86

Headwaters Little Missouri
Camp Albert Pike State Park, Ark.
Swimming Beach

Water Temp 40°

Air Temp 40°

- X Notropis cornutus - common shiner
- Fundulus catenatus - northern studfish
- Notropis boops - big eye shiner
- Etheostoma stigmaeum - speckled darter
- Micropterus dolomieu - smallmouth bass
- ✓ Notropis atherinoides - Emerald shiner
- Fundulus olivaceus - Blackspotted Topminnow

4-19-86

Arkansas River

Van Buren, Ark.

Historical Mural, Riverboat Park

Air Temp 57°

Water Temp 41°

Ictalurus punctatus - channel catfish

Micropterus punctulatus - spotted bass

Pimephales vigilax - Bullhead minnow

4-20-86

McGuire Public Access

Ouachita River

10 miles E. Mena, Ark.

Lepisosteus osseus - Longnose gar

5-3-86

Center Creek

S 1/4 of NW 1/4 of Sec. 9 T 27N R 29W

Jasper County, Mo.

Upstream from bridge Hwy 37

Business loop I 44

Air Temp - 75°

Water Temp 50° approx.

Notropis nubilus - Ozark minnow

Gambusia affinis - mosquitofish

1. Etheostoma whipplei - Redfin darter.

Etheostoma stigmaeum - speckled darter

Etheostoma flabellare - faintail darter.

Etheostoma nigrum - Johnny darter

Etheostoma cragini - Arkansas darter.

Etheostoma punctulatum - Stippled darter.

Nocomis biguttatus - Hornedhead chub

NO
NO
NO

5-5-86

North fork of the White River

Ozark co, Mo.

Hwy pp Bridge, 3 miles east
of Hwy 160

Water Temp 56°

Hypentelium nigricans - Northern Hog
Sucker

Cottus bairdi - Mottled Sculpin

Cottus caroliniae - Banded Sculpin

5-3-86

Flat Creek

Junction of Hwy 39 + 248

Barry County, Mo.

SE $\frac{1}{4}$ of SW $\frac{1}{4}$ of Sec. 19 T 24N R 25W

- Low Turbidity (very clear)

- Slow moving

- Ripples, Pools

Air Temp 78°

Water Temp 53° approx

Catostomus commersoni - White sucker

Notropis pilsbryi - Dusky stripe shiner

Notropis chryscephalus - Striped shiner

Compositoma oligolepis - Largescale shiner

Notropis rubellus - Rosyface shiner

Phoxinus erythrogaster - Southern redbelly dace

Moxostoma duquesnei - Black redhorse

Etheostoma juliae - Yoke darter

Etheostoma spectabile - Orangethroat darter

Notropis lutrensis - Red shiner

5-5-86

Black River Public Access

Wayne Co, Mo.

Below Hwy 34 Bridge

Leeper, Mo.

Air temp 75°

Water temp 68°

Ichthyomzon castaneus - chestnut lamprey

Lepomis gulosus - Warmouth

Ambloplites rupestris - Rock Bass

4-30-86

Neosho River, 4th St. dam

Neosho Co., KS

NW 1/4 of Sec. 29 T 30S R 21E

Percina phoxocephala - slenderhead darter

Carassius auratus - Goldfish

Pylodictis olivaris - flathead catfish

Dorosoma cepedianum - Gizzard shad

5-4-86

Current River Public Access

Van Buren, Mo. Carter County

SE 1/4 of SW 1/4 of Sec. 24 R 1W T 24

Notropis zonatus - Bleeding shiner

Etheostoma caeruleum - Rainbow darter

Etheostoma zonale - Banded darter

Noturus albat - Ozark madtom

7-7-84

Linn Co, ks

KG & E Power Plant Lake

La Cygne, ks

Dorosoma petenense - Threadfin Shiner

Esox lucius - Northern Pike

3-13-86

Jetties Santiago Pass, Isla Blanca co.
South Padre Island, Texas

Menidia beryllina - Tidewater Silverside

Blennius cristatus - Molly miller

3-12-86

Laguna Madre, South Padre, Texas
Opposite Andy Bowie Park

Fundulus similis

3-15-86

Brozos River

S.E. of Waco, Texas

Falls Co., Texas

Lepomis marginatus - Dollar Sunfish

5-3-86

Stone Co, Mo.

Near Junction of 13 & 248

SW $\frac{1}{4}$ of SW $\frac{1}{4}$ of Sec. 6 T 24N R 23W

Lepomis punctatus - Spotted sunfish

5-11-86

Cameron Co, Texas

Rio Grande river mouth at gulf of Mexico

Micropogon undulatus - Atlantic croaker

Gobionellus boleosoma - darter golby

5-1-86

Mammoth Springs Nat. Fish hatchery

Hwy 62

Fulton co, Ark.

Stizostedion vitreum - Walleye

5-1-86

Spring River State Fish hatchery

Hwy 342

Fulton co, Ark.

Salmo trutta - Brown trout

Salmo clarki - Cutthroat trout

Salmo gairdneri - Rainbow trout

