

Pittsburg State University

Pittsburg State University Digital Commons

Communication and Theater Programs

Communication

10-29-1998

Crimes of the Heart

Pittsburg State University

Follow this and additional works at: <https://digitalcommons.pittstate.edu/theater-programs>

Recommended Citation

Pittsburg State University, "Crimes of the Heart" (1998). *Communication and Theater Programs*. 177.
<https://digitalcommons.pittstate.edu/theater-programs/177>

This Book is brought to you for free and open access by the Communication at Pittsburg State University Digital Commons. It has been accepted for inclusion in Communication and Theater Programs by an authorized administrator of Pittsburg State University Digital Commons. For more information, please contact digitalcommons@pittstate.edu.

[1998]

A Pulitzer Prize-Winning Play

Crimes of the Heart

by Beth Henley



8:00 p.m. Thursday, Friday and Saturday

October 29, 30, and 31

2:00 p.m. Sunday, November 1

Memorial Auditorium

Directed by Sally Shedd

Technical Design by Barry Bengtsen

PSM Theatre Company presents

Crimes of the Heart

by Beth Henley

CAST

(In order of appearance)

Lenny Magrath, the oldest sister Alice Hilt
Chick Boyle, The sisters' first cousin Shimelle Laine
Doc Porter, Meg's old boyfriend Michael Jones
Meg Magrath, the middle sister Vonnie Corsini
Babe Botrelle, the youngest sister Heidi Hanson
Barnette Lloyd, Babe's Lawyer Clayton Fixsen

Time: In the fall; five years after
Hurricane Camille.

Setting: The kitchen of the
Magrath sisters' house in
Hazlehurst, Mississippi, a small
southern town.

Originally produced by the Actors
Theatre of Louisville, Inc. in February
1979.

CRIMES OF THE HEART received its New
York Premiere at the Manhattan Theatre
Club in 1980.

Produced on the Broadway Stage by
Warner Theatre Productions, Inc./Claire
Nichtern, Mary Lea Johnson, Martin Richards, Francine Lefrak.

Produced by special arrangement with Dramatists Play Service, Inc.

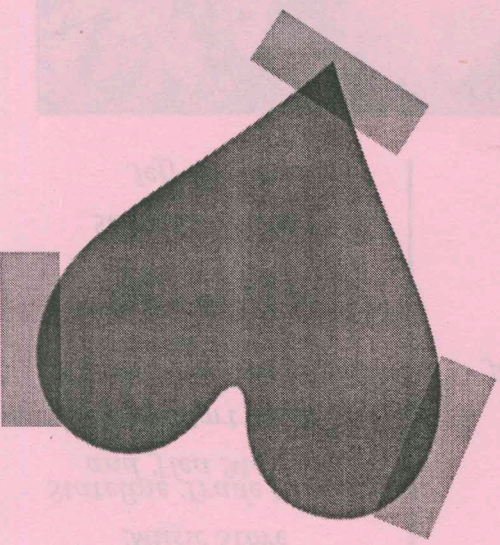
THERE WILL BE A 15-MINUTE INTERMISSION.

Family Reunion

Old Granddaddy is
at death's door, Babe
has shot her husband
because she "didn't like
his stinking looks,"
Lenny is mourning her
thirtieth birthday and
Meg is recovering from
a nervous breakdown.

*You won't want
to miss this
family's reunion!*

DIRECTOR'S NOTES



Through the setting of *Crimes of the Heart* is a small town in Mississippi in the 1970s, its depiction of individuals trying to make peace with the past and embrace love and happiness in the present are timeless. To highlight this universality, heavy accents and drastic fashion statements have been avoided in the hopes of creating a production whose relevance is not confined to a particular historical period or region of the country.

This play was chosen for presentation on PSU's Family Day Weekend because of its focus on family. Though they struggle through moments of hopelessness, anger, jealousy and utter frustration, eventually the sisters realize that they are "not so all alone" and in each other find the joy necessary to face life with renewed courage and hope. Their "jubilee" at the end of the play is a celebration of family, love — and refined sugar.

ACKNOWLEDGEMENTS

Ernie Williamson
Music Store

Stateline Trade Center
and Flea Market

Judy Portwood

PSU Printing Services -
Linda Grilz

Lindsay Hudson
Kris Hudson

Sara McAllister

Jeff Lovett

David Stubbs

Laura Zabel

Lin Little

Jennifer Powell

Joe Smith Tobacco
Company

Cathy Coomer

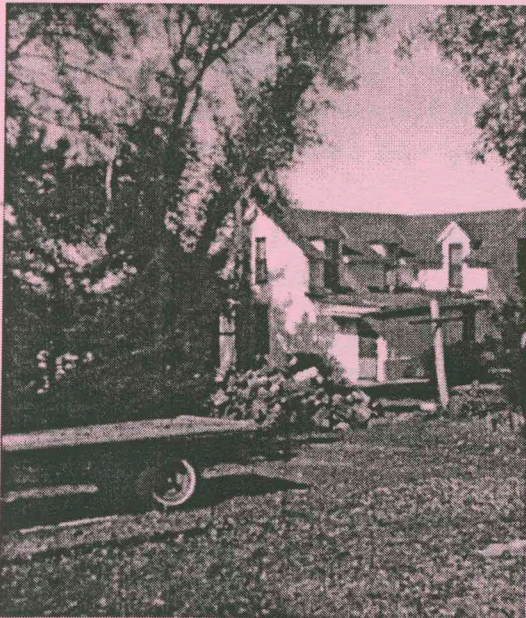
Ann Andaloro

Frances Corsini

Country Gardens
Photography - Kim Davis
and Melinda Rybnick

**VERY SPECIAL
THANKS TO:**

Dillons Bakery
Ron's IGA Bakery
Wal-Mart Supercenter



PRODUCTION CREW

Production Assistant . . . Vonnice Corsini
Sound Operator Jeff Lovett
Hair Design Elaine Harris

TECHNICAL PRODUCTION STUDENTS

. Elaine Harris
. Shimelle Laine
. Brian Walrod
. Corey Fugitt

TECHNICAL PRODUCTION CREW

. Paul Sawyer
. Brian Olson
. Ed Corbett
. Michelle Corbett

UPCOMING PSU THEATRE COMPANY PRODUCTIONS

Tony and Tina's Wedding February 19 -21

Antigone March 11-13

Note: The use of photographic, video, or recording equipment during the performance is strictly prohibited by law.

Beeping watches and portable paging devices are often distracting to the audience. If you are wearing a watch or a pager with an audible signal, please turn it off for the duration of the performance.

Thank you.