

Pittsburg State University

Pittsburg State University Digital Commons

Communication and Theater Programs

Communication

8-22-1991

Sunday in the Park with George

Pittsburg State University

Follow this and additional works at: <https://digitalcommons.pittstate.edu/theater-programs>

Recommended Citation

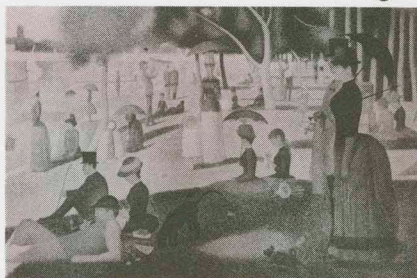
Pittsburg State University, "Sunday in the Park with George" (1991). *Communication and Theater Programs*. 162.

<https://digitalcommons.pittstate.edu/theater-programs/162>

This Book is brought to you for free and open access by the Communication at Pittsburg State University Digital Commons. It has been accepted for inclusion in Communication and Theater Programs by an authorized administrator of Pittsburg State University Digital Commons. For more information, please contact digitalcommons@pittstate.edu.

SUNDAY

IN THE PARK with George



Pittsburg State University
Department of Communication • Department of Music

1991 Summer Gala • August 22, 23, 24

COLLEGE OF ARTS & SCIENCES FINE AND PERFORMING ARTS 1991 SCHEDULE

COMMUNICATION DEPARTMENT

Sept. 19-20-21 Purple Doorknob (student production), 7:30pm, 108 Grubbs
Oct. 10-11-12 The Boys Next Door, 7:30pm, 108 Grubbs Hall
Nov. 14-15-16 Split Ends, 7:30pm, 108 Grubbs Hall
Dec. 5-6-7-8 Oliver, 7:30pm, Memorial Auditorium

MUSIC DEPARTMENT

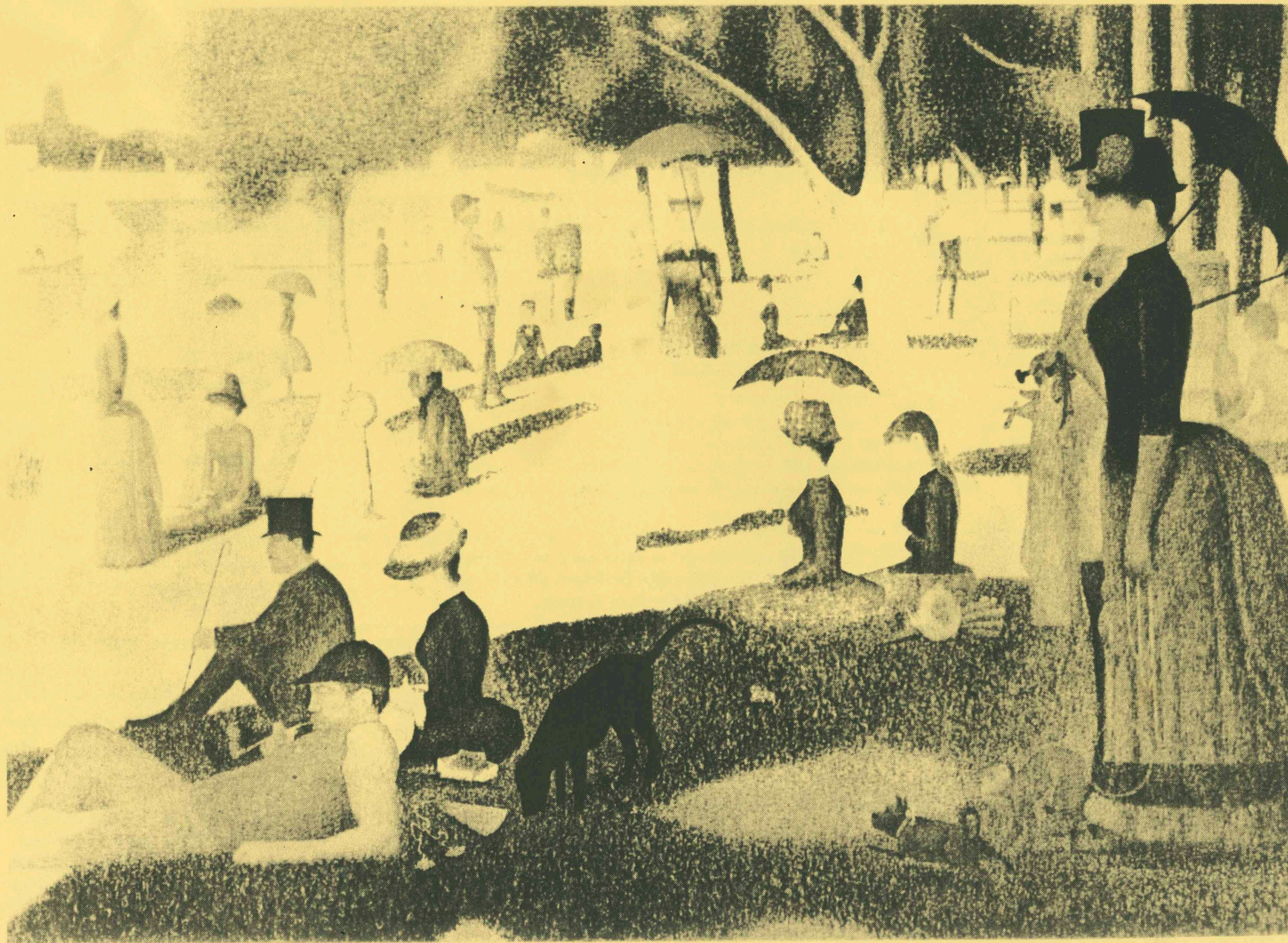
Sept. 10 Chiu-Ling Lin, Pianist SCMS, 8:00pm, McCray Auditorium
Oct. 1 25th Anniversary of Timmons Chapel, 7:00pm, Timmons
Oct. 3 PSU Jazz Band Concert, 8:00pm, McCray
Oct. 6 SEK Symphony (Paul Groves, Guest Tenor), 3:00pm, Memorial
Oct. 8 Paul Groves, Tenor-SCMS, 8:00pm, McCray Auditorium
Oct. 15 Lori Kehle, Faculty Piano Recital, 7:00pm, McCray
Oct. 22 Paul Carlson, Faculty Violin, 8:00pm, McCray Auditorium
Oct. 24 PSU Band Concert, 8:00pm, McCray Auditorium
Nov. 12 Robert Guthrie, Guitar-SCMS, 8:00pm, McCray Auditorium
Nov. 17 SEK Symphony (Spoon River Anthology), 3:00pm, Memorial
Nov. 19 PSU Jazz Band Concert, 8:00pm, McCray Auditorium
Nov. 21 PSU Band Concert, 8:00pm, McCray Auditorium
Nov. 24 PSU Choir Concert, 3:00pm, McCray Auditorium
Dec. 4 Timmons Christmas Program, Timmons Chapel
Dec. 6 Timmons Christmas Program, Timmons Chapel
Dec. 8 Centennial Choir, 3:00pm, McCray Auditorium

ART DEPARTMENT

Aug. 19-Sept. 13 Prints/Drawings, Porter Hall, Judith Fowler, Artist
Aug. 30 Lecture/Intro class, 9:30am, 109 Grubbs Hall
Reception, 10:30am, Porter Hall
Sept. 16-Oct. 4 Paintings/Sculptures, Porter Hall, Edward Metcalf, Artist
Sept. 16 Lecture/Intro class, 9:30am, 109 Grubbs Hall
Reception, 10:30am, Porter Hall
Oct. 14-25 Bag Exhibit, Porter Hall, Marjorie Schick, Artist
Oct. 16 Lecture, 6:30pm, 103 Porter Hall
Oct. 27-Nov. 15 Graduate Exhibit, Porter Hall, Michael Prater, Artist
Oct. 27 Reception, 7:00-9:00pm, Porter Hall
Nov. 17-Dec. 13 Senior Exhibit, Porter Hall
Nov. 17 Reception, 2:00-4:00pm, Porter Hall

ENGLISH DEPARTMENT

October 10 Jusef Komunyakaa, Poetry Reading
November 7 Greg Kuzma, Poetry Reading
March 5 Susan Hubbard, Poetry Reading



SUNDAY
In The
Park
With
George

SUNDAY IN THE PARK WITH GEORGE

produced by
the Departments of Communication and Music
College of Arts and Sciences
Pittsburg State University

Chair of Communication **Dr. Peter K. Hamilton**
Chair of Music **Dr. Gene E. Vollen**

"SUNDAY IN THE PARK WITH GEORGE"

Music & Lyrics by **STEPHEN SONDHEIM**

Book by **JAMES LAPINE**

Originally Directed on Broadway by James Lapine

Originally Produced on Broadway by

The Shubert Organization and Emanuel Azenberg

By arrangement with Playwrights Horizons, Inc., New York City,
which produced the original of "Sunday in The Park With George" in 1983

"Sunday in the Park with George" is presented through special
arrangement with **MUSIC THEATRE INTERNATIONAL**, 545
Eighth Avenue, New York, N.Y. 10018.

ANNOUNCEMENTS _____

- A special thanks to the stage crew, ushers, ticket sales staff and others who helped make the production a success.
- Thanks to Blackfriar Theatre for rental of costumes.
- Program design and photos by Ron McIntosh.

GEORGE SEURAT - DETAILS FROM A LIFE

1859: Born December 2 in Paris, France.

1884: Completes his first masterpiece at the age of 24 - "Bathers at Asnieres". The painting now hangs in the National Gallery in London. Population of the United States is 50,155,783.

1886: Completes "A Sunday Afternoon on the Island of La Grand Jatte". Seurat began the painting in March, 1884. It now hangs in the Chicago Art Institute.

Oct. 28: Statue of Liberty erected on Bedloe's Island. Geronimo, chief of the Chiricahua Apache, surrenders to General Crook.

1887: Seurat meets Vincent Van Gogh, who declares him the leader of a group of post-impressionist artists, including Gauguin and Toulouse-Lautrec.

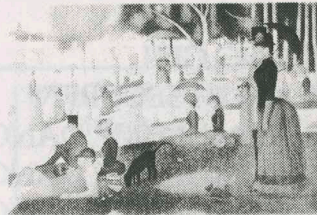
1889: March 4, Benjamin Harrison inaugurated as President of the U.S.
March 23: Oklahoma opened to white settlement.
March 31: Eiffel Tower is completed in Paris.

1890: February: Seurat's mistress (real name Madeleine Knobloch) has a son by him.

March: Seurat completes "Woman Powdering Herself", a portrait of Madeleine Knobloch.

1891: March 20, George Seurat dies from meningitis.

"Sunday Afternoon on the Island of La Grand Jatte" was painted in 1884-1886 by George Seurat in Paris. The oil painting, measuring 8'11" X 10', hangs in the Chicago Art Institute.



STEPHEN SONDHEIM

Composer, lyricist Stephen Sondheim, 61, is the premier living composer of the American stage. With his dazzling words and music, he has become the critical standard of intellect, taste and talent against which others are measured. His career spans four decades, and includes 13 original Broadway shows and six Tony awards, more than any other songwriter.

Beginning in his preteen years -- even as "Oklahoma" was in the planning stage -- Sondheim became a surrogate son and protege to Oscar Hammerstein. Hammerstein instructed him in the craft of writing for the musical stage, bequeathing him the breakthroughs of "Showboat" and "Oklahoma". Once Sondheim's professional career began in the 1950s, he collaborated on shows with many other innovators in the musical field, among them Richard Rodgers, George Abbott, Jerome Robbins, Leonard Bernstein, Harold Prince and Michael Bennett.

Sondheim's list of shows include such idiosyncratic topics as the westernization of Japan ("Pacific Overtures"), a counterpoint between the industrial Revolution and a man's murderous impulse for revenge ("Sweeney Todd") and an artist's obsession with the creative process ("Sunday in the Park with George").

"Sunday", the most demanding of the Sondheim musicals, was regarded as his most audacious work when it opened. It ran for more than a year on Broadway and won Sondheim and playwright-director James Lapine the 1985 Pulitzer Prize.

Ever since he made his Broadway debut in 1957 as the lyricist for "West Side Story", he has continued to propel the musical toward brave new horizons. In "Company" and "Follies" he explored the alienating themes of the cost of modern-day marriage and the inevitable erosion of youth and beauty. Another of Sondheim's recent credits includes writing three songs for Madonna for the film "Dick Tracy".

The more I found out about him (Seurat), the more I realized this is all about music. Seurat experimented with the color wheel the way one experiments with a scale. He used complementary color exactly the way one uses dominant and tonic harmony. When you start thinking about it, there are all kinds of analogies. It seemed effective to use rhythm to reflect putting dots on canvas..... STEPHEN SONDHEIM

SUNDAY in the Park with George

ACT I

The action takes place on a series of Sundays from 1884 to 1886, and alternates between a park on an island in the River Seine, just outside Paris, and George's studio.

GEORGE, an artist
DOT, his mistress
AN OLD LADY
HER NURSE
FRANZ, a servant
A BOY, bathing # 1
A BOY, bathing # 2
JULES, another artist
YVONNE, his wife
A BOATMAN
CELESTE #1
CELESTE #2
LOUISE, daughter of Jules
and Yvonne
FRIEDA, a cook
LOUIS, a baker
A SOLDIER
MR.
MRS.
RUNNING GIRL
YOUNG GIRL, with flowers
WOMAN, with baby
MAN, with French horn
YOUNG GIRL, with parasol
YOUNG MAN, her lover

CHRISTOPHER WILLARD
TAMMY BARNETT
KATHLEEN LOMSHEK
HOPE TAJ
CURT CRESPINO
PATRICK LAUSHMAN
EVAN HOYT
ROB PYLE
HEATHER ARNOLD
CYPRIAN SANCHEZ
GENE ANNE EVANS-YOUNG
LIZ WEBSTER
BARBARA HILT

M'LOU GLOVER
THOMAS ANDERSON
DAVID DALBY
WHITNEY PLATT
CHRISTINE HAMMERSLEY
JENNIFER SCHOTT
KRISTINA PATRICK
JANETTE MAUK
MATT WEBSTER
LIZ HILT
BRIAN BEESON

— ● —
THERE WILL BE A 15-MINUTE
INTERMISSION BETWEEN ACTS

SUNDAY in the Park with George

ACT II

The action takes place in the present at an American art museum, and back on the island in the River Seine.

GEORGE, an artist
MARIE, his grandmother
DENNIS, a technician
BOB GREENBERG, the museum
director
NAOMI EISEN, a composer
HER ASSISTANT
HARRIET PAWLING, a patron
of the arts
BILLY WEBSTER, her friend
A JOURNALIST
A PHOTOGRAPHER
CHARLES REDMOND, a
visiting curator
ALEX, an artist
BETTY, an artist
LEE RANDOLPH, the museum's
publicist
BLAIR DANIELS, an art critic
A WAITRESS
ELAINE
ART PATRON
YOUNG GIRL
MUSEUM SECURITY
CHROMOLUME DANCER #1
CHROMOLUME DANCER #2
CHROMOLUME DANCER #3

CHRISTOPHER WILLARD
TAMMY BARNETT
CURT CRESPINO
ROB PYLE

HEATHER ARNOLD
KRISTINA PATRICK
HOPE TAJ

THOMAS ANDERSON
CHRISTINE HAMMERSLEY
MATT WEBSTER
CYPRIAN SANCHEZ

DAVID DALBY
M'LOU GLOVER
WHITNEY PLATT

KATHLEEN LOMSHEK
GENE ANNE EVANS-YOUNG
LIZ WEBSTER
LIZ HILT
BARBARA HILT
BRIAN BEESON
DEBRA LINDQUIST
JANETTE MAUK
JENNIFER SCHOTT

A Sondheim chronology of first performances

*WEST SIDE STORY (lyrics)	1957
*GYPSY (lyrics)	1959
*A FUNNY THING HAPPENED ON THE WAY TO THE FORUM (music & lyrics)	1962
ANYONE CAN WHISTLE (music & lyrics)	1964
DO I HEAR A WALTZ? (lyrics)	1965
COMPANY (music & lyrics)	1970
FOLLIES (music & lyrics)	1971
A LITTLE NIGHT MUSIC (music & lyrics)	1973
PACIFIC OVERTURES (music & lyrics)	1976
SIDE BY SIDE BY SONDHEIM (anthology)	1977
*SWEENEY TODD (music & lyrics)	1979
MERRILY WE ROLL ALONG (music & lyrics)	1981
*SUNDAY IN THE PARK WITH GEORGE (music & lyrics)	1984
INTO THE WOODS (music & lyrics)	1987

*Shows that have been staged in Pittsburg by
Pittsburg State University.

FANCY GOODS CONSIGNMENT ANTIQUES 818 N. Broadway	JB's Bar & GRILL 516 N. Broadway	PORTRAITS By Gayden Shell 231-3350	BARGAIN OUTLET Wholesale prices 1810 N. Broadway
---	--	---	---

The Directorate

DIRECTOR --

John Green



This is director John Green's third summer gala. The London, England, native divised the first gala in 1989, "An Evening in Silver & Gold", and also created last summer's "An Evening with Andrew Lloyd Webber". An assistant professor at PSU, he also has directed PSU productions of "West Side Story", "Hiawatha", "Sweeney Todd", "A Child's Christmas" and "Metamorphosis". Mr. Green, who is working on a doctorate, also has directed productions in London, Scotland, Germany and France, and has participated in theatre workshops with the Royal Shakespeare Company and the Royal National Theatre Co.

MUSICAL DIRECTOR/

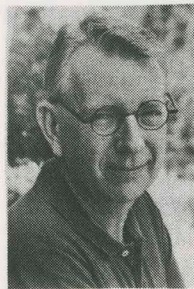
ORCHESTRAL CONDUCTOR -- Susan Laushman



Ms. Laushman is a graduate assistant in the music department at Pittsburg State University, where she is pursuing a master's degree in music. She also assumed the baton last year in presenting the challenging "An Evening with Andrew Lloyd Webber" gala night. Ms. Laushman is director of the PSU Jazz Choir, and directs two children's choirs in Pittsburg. She also has appeared on stage in roles that include Despina in "Cosi fan Tutte", Anna in "Tintypes", Griddlebone in "Cats", and Sally from "Die Fliedermaus".

DESIGNER --

Barry Bengtsen



Mr. Bengtsen has designed more than 140 productions for PSU, most notably "Hamlet", the first production (1985) in the renovated Pittsburg Memorial Auditorium. He also has designed sets for Barking College of Technology, London; Missouri Repertory Theatre, Kansas City; University of Kansas; University of Missouri, and Topeka Civic Theatre. He also will take a turn at direction this fall with PSU's "The Boys Next Door", scheduled for October.

The Staff

Director	John Green
Musical Director	Susan Laushman
Designer	Barry Bengtsen
Movement Director	Tess Green
Sound	Robert Kehle
Lighting	Barry Bengtsen
Stage Manager	Linda Bush
Scenic Artist	C.L. Wilson (U.S.A.)
Assistant Stage Mgr. Technical Crew	Kristine Shoemaker Michelle Kuehm Jeff Glenn Kevin Hamilton Shawn Hamilton Adam Barber Sandra Belfield Alex Barde Vern Morton Jimmy McFall Dallas Masoner Arlan Vomhof
Art Advisor Scene Painter Set Construction	

A special thanks to Mary Hamilton,
for costumes; KRPS-radio, and PSU
faculty.

MARY KAY
Cosmetics
PATTY SEARS
316-232-6825

The Orchestra

* Susan Laushman	Conductor/Piano/Synthesizer
* Carol Hoyt	Synthesizer
Ed Good	Synthesizer
* Bob Laushman	Percussion
Arlecia Elkamil	Percussion
* Dr. Paul Carlson	Violin
Linda Vollen	Violin
Cecily Mahan	Viola
* Dr. Carolann Martin	Cello
* Dr. Robert Schott	Woodwinds
* Dr. Russell Jones	Woodwinds
Jennifer Holman	Flute, Piccolo
Jean Klassen	French Horn
* Denotes Pittsburg State University faculty.	

SPECIAL THANKS TO Luis Ortega, NEO Music Department, Mary
Susan Whaley and the PSU Music Department for use of their synthe-
sizers.

THE CAST

GEORGE -- Christopher Willard

Chris is a master's degree candidate at PSU, and a television/film instructor at Northeast Oklahoma A & M College in Miami, Ok., where he also is on the directing staff. His most recent stage shows include "Charlotte's Web", "The Nerd", and "1776". He also has worked professionally as an entertainer at Dogpatch U.S.A. in Harrison, Ark., and in the "Trail of Tears" outdoor drama in Tahlequah, OK. Chris also works as a freelance videomaker and has won awards for his work from the Hometown Video Festival, The Rochester Film Fest, and the Chicago International Film Festival. He is a past recipient of grants from the National Endowment of the Arts and the American Film Institute.

DOT & MARIE -- Tammy Barnett

Ms. Barnett has performed in numerous musical theatre and light opera productions in the Joplin area. Most recently she portrayed the principal character in the 1990 PSU Summer Gala "An Evening with Andrew Lloyd Webber". She is a recipient of the Mamie Holden Music Scholarship, and a winner of PSU's Waddill Competition. She has attended the Inspiration Point Fine Arts Colony at Eureka Springs, Ark., through an award from the Carthage Music Devotees, where she performed the role of "Zerlina" in the opera "Don Giovanni". Ms. Barnett has studied voice at the University of Oklahoma, PSU, and is currently studying with Marguerite Carney of Webb City.

OLD LADY & BLAIR DANIELS Kathleen Lomshek

Ms. Lomshek, fourth grade teacher at McCune Elementary School, is well known for her musical talents, having appeared in Pittsburg Community Theater productions of "Sound of Music", "Mame", "Hello, Dolly", "Damn Yankees", and the PSU production last winter of "A Child's Christmas".

NURSE & HARRIET PAWLING Hope Taj

Ms. Taj, a PSU communication major, made an acclaimed PSU stage debut last winter as the "tipsy" Auntie Hanna in "A Child's Christmas". She also is the 1990-91 PSU winner of the Daugherty Scholarship, and was named 1990 PSU Theater Department's "Best Newcomer".

FRANZ & DENNIS Curt Crespino

Curt completed undergraduate and graduate degrees at PSU, and appeared in the 1989 and 1990 summer galas as well as "Sweeny Todd", "Hiawatha", "Guys & Dolls", "Hamlet" and "West Side Story". He also appeared in Pittsburg Community Theater's "Damn Yankees", "Mame", "Livin' De' Life", and "Annie Get Your Gun".

JULES & BOB GREENBERG Rob Pyle

Rob is appearing in his first PSU production, but he is not new to the stage. He is starring in a new Nashville Network comedy series that premieres Oct. 23., and has appeared on stage in "The Elephant Man", "Hello, Dolly", "Back County Crimes", and "Skin of Our Teeth". A Florida native, he lives in Girard.

MUSICAL NUMBERS

ACT I

"SUNDAY IN THE PARK
WITH GEORGE"

Dot

"NO LIFE"

"COLOR AND LIGHT"

"GOSSIP"

Jules & Yvonne
Dot & George
Celeste #1 & #2,
Boatman, Nurse, Old
Lady, Jules & Yvonne

"THE DAY OFF"

George, Nurse, Franz,
Frieda, Boatman,
Soldier, Celeste #1,
Celeste #2, Yvonne,
Louise, Jules & Louis
George
George & Dot
George & Old Lady
Company

"EVERYBODY LOVES LOUIS"

"FINISHING THE HAT"

"WE DO NOT BELONG TOGETHER"

"BEAUTIFUL"

"SUNDAY"

ACT II

"IT'S HOT UP HERE"

"CHROMOLUME # 7"

"PUTTING IT TOGETHER"

"CHILDREN AND ART"

"LESSON #8"

"MOVE ON"

"SUNDAY"

Company
Orchestra
Company
Marie
George
George & Dot
Company

Safety that's sure

FIRST STATE BANK
and Trust Co.

5th and Broadway / Drive-in at 4th and Walnut
Pittsburg, Ks. 66762 Member FDIC

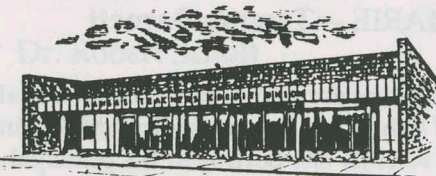
24-hour service

Service that satisfies

Overall, You Will Always Save More Money at

WAL-MART®

Kansas Teachers
Credit Union



"Serving All Area Residents"

EXPANDACHEK

THE PERFECT CHECKING ACCOUNT

- . Loans
- . Expandachek
- . Passbook Share Accounts
- . Money Market Certificates
- . Drive-In Windows
- . Christmas Club
- . Safe Deposit Boxes
- . Traveler's Checks
- . Free Notary Service
- . Night Depository

231-5719

416 N BROADWAY
PITTSBURG

C City
National
Bank

2720 N. Broadway
231-8280

100 S. Broadway
231-8400

McCune Branch
632-4267

MEMBER FDIC



CELESTE #1 & WAITRESS
Gene Anne Evans-Young

Gene Anne, whose most recent PSU appearances were in last year's gala and "A Child's Christmas", completed a master's degree in music this year at PSU. She has sung in "Die Fledermaus," "Old Maid and the Thief" and "The Marriage of Figaro". Ms. Evans-Young also sang the "Scarlatti Christmas Cantata" which was recorded and presented on KRPS, 89.9 FM Radio, in 1989.



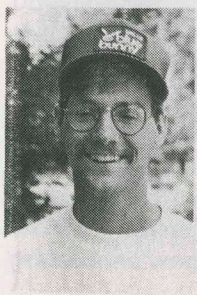
CELESTE #2 & ELAINE
Liz Webster

Liz arrives at PSU this year after being named 1991 Ft. Scott Community College "Drama Student of the Year". She was in FSCC productions of "The Shagwood Secret", "King and I", "Sound of Music", "Cheaper by the Dozen", and "Leader of the Pack". She also was in PSU's gala and Christmas show last year.



FRIEDA & BETTY
M'Lou Glover

M'Lou is a master's degree candidate in the PSU Department of Communication. She has performed in PSU productions of "Anne Sexton - Death Within Life", "On Golden Pond", "Beyond the Call of Duty", and received acclaim as the mother in this year's production of "Metamorphosis". She received the Theta Alpha Phi "Best Actress" awards in 1986 and 1987.



LOUIS & BILLY WEBSTER
Thomas Anderson

Tom made his debut for PSU in the first summer gala, "An Evening in Silver and Gold". He subsequently appeared in the "Fantastiks", and "Tissue", for which he won the best actor award for experimental theatre this year. This summer, he has performed for the River City Players in Kansas City. Tom is studying music at PSU.

YVONNE & NAOMI EISEN
Heather Arnold

Ms. Arnold appeared in several productions at Cottey College in Nevada, Mo., before enrolling at PSU where she was named this year's "Best Actress" in Experimental Theatre, in large part due to her role in "Trifles". She appeared in "Girls of the Garden Club", "Goodbye My Fancy", and "Winnie the Pooh" at Cottey. She is from Nebraska City, Ne.



BOATMAN & CHARLES REDMOND
Cyprian Sanchez

Cyprian, a PSU junior from Dodge City, has appeared in PSU Experimental Theatre productions of "The Fantastiks" and "Trifles". At Dodge City Community College he appeared in "The Mousetrap" and "The Nerd". He also played in "Biloxi Blues" and "Anything Goes" in the Joplin Little Theater.



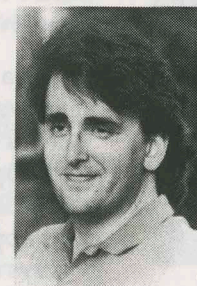
LOUISE
Barbara Hilt

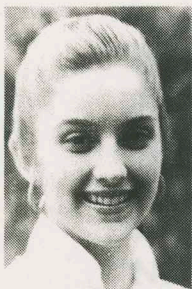
Barbara, a student at St. Mary's Grade School, is no stranger to the stage even though she is only 11. She was a munchkin in PSU's 1989 summer gala, a servant in Pittsburg's "Calvary Hill", appeared in "Three Wee Kings" at St. Mary's, and just completed a role in Pittsburg Community Theatre's "Gypsy".



SOLDIER AND ALEX
David Dalby

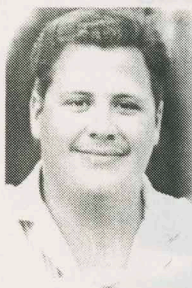
David brings his fine voice to the show straight from his super performance as Tom in PSU's production of "A Child's Christmas" last December. A native of Scribner, Neb., he also has appeared in "Dracula", "The Zoo Story", "Anything Goes", "Summer and Smoke", "Godspell" and "Bastien and Bastienna".





YOUNG GIRL WITH FLOWERS and MUSICIAN
Kristina Patrick

Kristina, a junior at Pittsburg High School, is PHS's 1991 "Best Actress". Her long list of stage credits includes "A Christmas Carol" at PSU, "The Wolf and the Seven Kids" for Pittsburg Community Theatre, and "Brighton Beach Memoirs" and "Play On" at PHS.



MISTER and LEE RANDOLPH
Whitney Platt

Whitney, a PSU communication major, brings his multi-talents to "Sunday" after his saluted role as the father in PSU's "Metamorphosis" last Spring. He has written and produced two scripts - "Cacophony" and "Gathering Dust" - for PSU's experimental theatre, won "Best Actor" awards for roles in PSU's "Fantastiks" and "House of Blue Leaves".



MRS. and PHOTOGRAPHER
Christine Hammersley

Ms. Hammersley, an Emporia State University graduate, appeared in last year's summer gala and the PSU production of "A Christmas Carol", and just completed playing Rose in the Pittsburg Community Theatre production of "Gypsy". She also appeared in numerous productions at ESU, including "Oklahoma", "Brighton Beach Memoirs" and "Daughters".



MAN WITH FRENCH HORN
Matt Webster

Matt, a senior at Ft. Scott High School, is a state choir medalist, and was selected as a member of the district and state high school choirs. He appeared in last year's PSU summer gala, and has appeared in productions for Ft. Scott Community Theatre, Ft. Scott High School and Pittsburg Community Theatre. He has appeared in "Gypsy", "Oklahoma", "West Side Story", and "Guys and Dolls".

RUNNING GIRL and DANCER
Jennifer Schott

Jennifer is a junior at Pittsburg High School who already has appeared in five PSU productions, including the last two summer galas and "A Christmas Carol". At PHS she starred in the one-act plays, "Sally and Sam" and "The Dark Room". A 1991 Four-star Thespian Member, she also has played in "Tom Sawyer" and "Showboat".



YOUNG GIRL WITH PARASOL
Liz Hilt

Liz is a student at Colgan High School, Pittsburg. She won two best actress awards this year in tournaments, and just completed a role in Pittsburg Community Theatre's "Gypsy". She also has appeared in "The Prodigal Daughter", "Little Shop of Horrors", "Oklahoma" and "You're A Good Man Charlie Brown".



WOMAN WITH BABY CARRIAGE & CHROMOLUME DANCER
Jeanette Mauk

Ms. Mauk has appeared in every PSU production directed by John Green at Pittsburg Memorial Auditorium, including the last two summer galas and "A Child's Christmas". She also appeared in the Pittsburg Community Theatre production of "Crimes of the Heart". A talented dancer, she is a member of the Jody Phillips Dance Company.



CHORUS
Brian Beeson

Brian is a PSU freshman from Girard who is appearing in his first PSU production, although he has extensive experience on stage for Pittsburg Community Theatre with appearances in "Gypsy", "The Heiress" and "Oklahoma". He also appeared in the "Sound of Music" at Girard High School. He went to the state championships for improvised duet acting.



About the painting

When George Seurat began work on his second major painting in 1884 he had already carefully studied the scientific findings on color set down by Eugene Delacroix and, following the influence of the impressionist painters of the period, had arrived at a new style of painting...one that would later be termed "divisionism". Seurat's intent was to substitute the mixture of pigments on the palette with the mixture of colors by the eye. Complementaries, applied to the canvas in tiny brushstrokes side by side, fuse together optically at a distance, stirring up luminosities from the canvas more intense than those created by mixed pigments alone. The result is a painting that is alive with a vibrating radiance of color and light.

"A Sunday Afternoon on the Island of La Grande Jatte" became Seurat's manifesto painting: a singularly mature work, representing his completely worked-out technique. The French art critic, Felix Feneon, defined it: "It is four o'clock on Sunday afternoon in the dog-days. On the river the swift barks dart to and fro. On the island itself, a Sunday population has come together at random, and from a delight in the fresh air, among the trees. Seurat has treated his 40 or so figures in summary and hieratic style, setting them up frontally or with their backs to us or in profile, seated at right angles, stretched out horizontally, or bolt upright."

The grouping of figures in profile is a direct influence from the Pan-Athenaic friezes Seurat studied as a young artist. The choice of subject matter -- the working class on an industrial park Sunday -- owes much to Puvis de Chavannes who Seurat idolized. The harmonious arrangement of figures in the park, however, is entirely Seurat's own contribution. The careful arrangement of shapes and the repeated motifs of color and line are trademarks of his work. So perfectly balanced, so painstakingly composed, every detail is a result of months of exhaustive research which rendered an unprecedented number of smaller oil studies and crayon drawings in preparation for the final, massive canvas of "La Grande Jatte" which took two years to complete.

When painting, Seurat always concentrated on a single section of the canvas, having previously determined each stroke and color to be applied. Thus, he was able to paint steadily without having to step back from the canvas in order to judge the effect obtained. His extreme mental concentration enabled him to continue working late into the night, even by the faint illumination of lantern light. But the type of light in which he painted was unimportant, since his purpose was completely formulated before he ever took up his brush. Nothing was left to chance. Nevertheless, the completed work appears to be something very natural, without any evidence of strain.

"La Grande Jatte" was first shown at the Eight Impressionist Exhibition in a room too narrow for spectators to see it at the proper distance Seurat had intended. Only the critic Feneon and a few Seurat followers saw the uniqueness in his canvas and praised the work.



PHOTO SESSION: Photographer Gayden Shell sets up a publicity photo on the lawn in front of PSU's Russ Hall of costumed (l-r) Kristina Patrick, Jennifer Schott, Heather Arnold and Whitney Platt.

A
BANK IV
people like you.



BANK IV, Pittsburg, s.s. / 3rd & Broadway / 2805 N. Broadway / Pittsburg, Kansas 66762 / (316) 231-0800
Member FDIC

FINDER'S KEEPERS is your "VALUE FASHION STORE" in the Meadowbrook Mall.

C & S CLEANERS is located on the Plaza across Broadway from Pittsburg State University.

B.O.C. TIRE & SUPPLY, 302 S. Broadway, features Hunter Computer Alignment service. Phone: 231-1250.

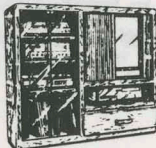
RADIO SHACK is the place for electronics. We're located in the Meadowbrook Mall.

BUD'S JEWELRY, 720 N. Broadway. Phone: 231-7399. And, C & B Audio for dances. Call 231-1668.

CITIZEN'S NATIONAL BANK of Pittsburg is a full-service bank located downtown on Broadway. Phone: 232-1100.

UNITED ARTISTS CABLE is Pittsburg's cable-TV company. We're at 2802 N. Joplin. Phone: 231-3360.

J.C. PENNEY, "where fashion comes to life", in the Meadowbrook Mall.

PSU presents "The Boys Next Door" Oct. 10 11 & 12	merle norman total-image, full-service salon 231-2760 613 N. Broadway	Sporting goods JOCK'S NITCH 513 N. Broadway & Meadowbrook	ENTERTAINMENT CENTER by Lifestyle of California  44314 *Organize your valuable electronics * All solid wood *Why pay more elsewhere? * Reg. \$499 \$299 <small>\$18 per month*</small> westco Monthly payments with approved credit 621 N. Broadway
---	--	---	--

THANK YOU

For all the help ---

Shirley Purdy

Kim Shipman

Jerry Miller

Patty Abbott

Hope Taj

Shirley McConnell

Mary Hamilton

Kathy Holsman

Phyllis Cobb

David Purdy

Fred Boham

Joyce Boham

Ernie Williamson Music House

Memorial Auditorium Staff

Menghini Brothers Distributors Inc.

PSU Desktop Publishing

PSU THEATER AUDITIONS
September 5 & 6 7 p.m. 108 Grubbs Hall

FOR

"THE BOYS NEXT DOOR"

Directed by Barry Bengtsen

October 10-11-12, 1991

Minimum: five men and two women

PSU Christmas Production

"Oliver!"

December 5, 6, 7, & 8

A Benefit Production for
Pittsburg Public Library

SPECIAL PATRONS

(Donations of \$50 or more)

Joe E. and Nancy Aquino
Pamela Beer
DuReece Porr
Lisa and Sudhir Chopra
Dr. and Mrs. Art Fischer
Mark and Cheryl Carlson
Mr. and Mrs. Joe F. Gregory
Mr. and Mrs. Wm. R. Hagman
Sara S. Beezley, attorney
Mr. and Mrs. Joe Keller
Don and Diana Kerle
Robert E. Lyerla
Patrick O'Bryan
Mr. and Mrs. A.J. Menghini
Mr. and Mrs. George E. Nettels
Jeff and Deb Nichols
Magda and Elias Tawil
Randy and Ann Timi
Paul L. and Florine Wilbert
Dr. and Mrs. T. E. Yaghmour
John and Hazel McCrone
KOAM-TV
Dr. and Mrs. Don Holsinger
Mrs. Susie Hamilton
Mrs. Mary Hamilton
Dr. Peter K. Hamilton
Fred and Joan Tweet

Tony and Joyce Vietti
Dr. Gene Vollen
Chet and Cecie Fritz
Mr. and Mrs. William Weigel
Charlotte Barnett
City National Bank
Dr. and Mrs. Earl E. Miller
David and Jane Nance
Kaye Lynn Webb
Elizabeth Dougan
Louise Dougan



**At Pizza Hut,[®]
we believe that
fine food is also a fine art.**

**Pizza Hut[®]
supports the best of
Pittsburg and America**

**© 1990 Pizza Hut Inc.[®] and TM designate registered
trademarks of Pizza Hut, Inc.**