

Pittsburg State University

Pittsburg State University Digital Commons

Communication and Theater Programs

Communication

6-19-1976

Playhouse On Broadway

Kansas State College of Pittsburg


Follow this and additional works at: <https://digitalcommons.pittstate.edu/theater-programs>

Recommended Citation

Kansas State College of Pittsburg, "Playhouse On Broadway" (1976). *Communication and Theater Programs*. 90.

<https://digitalcommons.pittstate.edu/theater-programs/90>

This Book is brought to you for free and open access by the Communication at Pittsburg State University Digital Commons. It has been accepted for inclusion in Communication and Theater Programs by an authorized administrator of Pittsburg State University Digital Commons. For more information, please contact digitalcommons@pittstate.edu.



PLAYHOUSE ON BROADWAY

presents —

**SOUTHEAST KANSAS'
ONLY REPERTORY
SUMMER THEATRE!**

**JOIN US!
HELP US CELEBRATE**
—Our Fifteenth Summer!
—Our Nation's Bicentennial!
—Our City's Centennial!

**JUNE 19 — JULY 25
1976**

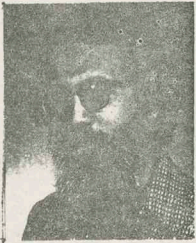


Playhouse on Broadway
Kansas State College of Pittsburg

SUMMER COMPANY

Chairman of the Department	Dr. Harold Loy
Associate Professor of Theatre . .	Dr. Cary Clasz
Director of Summer Theatre	Don Ramsey
Technical Director	Sam Raines
Musical Director	John E. Cox
Choreographers	Susan McCrate Piper Pickrell
Costume Designer	Dawn Murrell
Master Electrician	Gary Weber
Master Carpenter	Mike Farris
Stage Manager	Jim Wright
House Manager	Nancy Flagg
Properties	Becky Langan
Departmental Secretary	Bev Vogel
Company Secretary	Janie Van Vleck
Seamstresses	Amber Crawford Sallye Cox Therese Jones Patty German Kandy Varian Nancy Tinsley Keith Welty
Technicians. .Kris Pearson	
Robert Gobetz	
Steve Allen	
Mark Denney	

JACQUES BREL IS ALIVE AND WELL
AND LIVING IN PARIS



JOHN E. COX (Jacques Brel director; musical director)

John holds a B Mus Ed and MA from the University of Tulsa and is completing another MA in music at KSCP. He was musical director for KSCP productions of Godspell, She Loves Me, and No, No, Nanette. A teacher for 8 years, John has taught vocal music at ACCJC in Iola and Lebanon High School in Missouri. John directed last spring's studio production of Jacques Brel.



KEN WILSON (Assistant Musical Director)

Ken is a Parsons senior working toward an organ major at KSCP. His orchestral experience includes the Parsons Recreation Commission's production of Fiddler on the Roof, and Labette Community Players' production of Sweet Charity.



SUSAN McCRATE (Choreographer)

An Iola senior, Susan choreographed the previous production of Jacques Brel and Pittsburg's Udell's Printer '76. She has portrayed major roles at KSCP in Bus Stop, Autumn Garden, Godspell, and The Children's Hour. Susan has had technical stage experience in lighting, stage managing, and directing.



SALLYE COX. (Costumer)

Sallye completes her BFA at KSCP this summer. She was costume designer for Superman, Scandel in St. Florence Valley, Autumn Garden, and the spring production of Jacques Brel at KSCP. Wife of the director, Sallye will be spending her second summer with the Playhouse.

ORCHESTRA

Piano - Ken Wilson
Guitar - James Christian

Drums - Ralph Taylor Marimba - Denise Heising
Bass - Joe Ferraro

WHO'S WHO IN THE CAST



CAROLYN BERRY (Jacques Brel cast)

From Ellinwood, KS, Carolyn has received her BSED from Northwest Missouri State University. Finishing her MSed in art education at KSCP this summer, Carolyn joins the Playhouse for the first time. Her only previous theatre experience was the title role in Alice in Wonderland at Great Bend, KS.



STEVE ALLEN (Jacques Brel cast; Dick)

Steve is a Parsons senior working on a speech and drama major and music minor in voice at KSCP. He appeared last spring in the chorus of the KSCP's opera Street Scene. Spending his first summer with the Playhouse, Steve is also a member of the technical staff.



PAM HANDSHY (Jacques Brel cast; Velvetene Rabbit, Ruby)

A KSCP sophomore from Pittsburg, Pam has appeared in community and summer recreation productions of Arsenic and Old Lace, Black Comedy, Pajama Game, 110 in the Shade, and Udell's Printer '76. Her KSCP production credits are roles in Autumn Garden, Ah! Wilderness, Jacques Brel, and No, No, Nanette. This will be Pam's second summer with the Playhouse.



KRIS PEARSON (Jacques Brel cast)

Originally from Ulysses, KS, Kris has attended K-State, Garden City Community Juco, and Columbia School of Broadcasting in Los Angeles, and he is now a senior at KSCP. He has performed in KSCP productions of No, No, Nanette, Pinocchio, Bus Stop, and Ah! Wilderness. A technician for the Playhouse, Kris is with the company for the second time.



TERESA WALLEN (Jacques Brel cast; chorus)

Returning for her second summer with the Playhouse, Teresa has attended KSCP and ICJC in Independence, KS. She was in KSCP's Oklahoma and Carousel, and in the Independence production of The King and I. Specializing in dance, Teresa was a member of the Joplin Civic Ballet in 1973 and has studied under Elizabeth Ketchem, Trenetta Robertson, and Piper Pickrell.



KEITH WELTY (Jacques Brel cast; Lucky)

Another member of the technical staff, Keith is with the Playhouse for the first time. A native of Pittsburg, he portrayed Richard Faulkner in Pittsburg's production, Udell's Printer '76. Keith is a sophomore at Baker University studying voice and working on a music major.

JACQUES BREL

IS ALIVE AND WELL AND LIVING IN PARIS
A NEW KIND OF MUSICAL

Production conception, English lyrics, additional material

by *Eric Blau* and *Mort Shuman*.

Based of Brel's lyrics and commentary

Music by

Jacques Brel

Directed by

JOHN E. COX

Assistant Musical Director

KEN WILSON

Costumes

SALLYE COX

Choreography

SUSAN McCRATE

CAST:

Carolyn Berry
Pam Handsby
Teresa Wallen
~~Joanne Young~~

Steve Allen
Kris Pearson
Keith Welty
~~Eric Young~~

MUSICAL SYNOPSIS

ACT ONE

Overture Orchestra
Marathon Company
Alone Keith
Madeleine Company
I Loved Pam
Mathilde Kris
Bachelor's Dance ~~Eric~~ Keith
Timid Frieda Teresa & Co.
My Death Carolyn
~~Girls and Dogs~~ Steve and Keith
Jackie ~~Eric~~ Kris
Statue Steve
The Desperate Ones Company
Sons of ~~Joanne~~ Pam
Amsterdam Kris & Co.

ACT TWO

The Bulls Keith
Old Folks ~~Joanne~~ & Co. Teresa
Marieke Carolyn & Co.
Brussels Company
Fannette ~~Eric~~ Kris
Funeral Tango Steve
Middle Class Kris and ~~Eric~~ Steve
No, Love, You're Not Alone ~~Joanne~~
Next Kris
Carousel Pam & Co.
If We Only Have Love Company

There will be one 15-minute intermission.

VELVETEEN RABBIT

A MUSICAL PLAY

Book, Lyrics and Music by

Barnes Boffey and Paul Pilcher

Additional Music by

Bob Love

Based on Book by *Margery Williams*

Designed and Directed by

SAM RAINES

Musical Director

JOHN E. COX

Costumes

DAWN MURRELL

Choreography

SUSAN McCRATE

Musical Accompaniment

KEN WILSON

BECKY PORTER

CAST:

Velveteen Rabbit Pam Handshy
The Little Boy John Ploof
Skin Horse Randy Buford
Nana Nancy Tinsley
Uncle Fred Rich Davidson
Aunt Sally Becky Henderson
First Tin Soldier Sue Zan Foster
Second Tin Soldier Joy Brooker
Third Tin Soldier Becky Gramh
Fourth Tin Soldier Cindy Kuhel
Clown Demetri Bardi
Baby Doll Linda McCabe
Model Boat Sean Cox
Fire Truck Rick Schnakenberg

Jack-in-the-Box Penny Tretbar
Spinning Top Colin Cox
Mouse Brad Cox
Lion David Dechicchio
First Building Block Amber Crawford
Second Building Block Candy Varian
Third Building Block Nancy Alexander
Fourth Building Block Olive Sullivan
Muggsy Sue Blancho
Buggsy Susan McCrate
Huggsy Mary Dellasega
Doctor Rick Schnakenberg
Good Fairy Leah Maiserouille
Narrator Jim Wright

TIME: Present.

PLACE: The Little Boy's Home; the toy closet; the forest.

There will be one 15-minute intermission.

★ GIRLS IN 509 ★

A Comedy in Two Acts

by *Howard Teichmann*

Directed by

DR. CARY CLASZ

Designed by

SAM RAINES

Costumes by

DAWN MURRELL

CAST:

Mimsy	Linda Bush
Aunt Hettie	Mary Dellasega
Old Jim	Randy Buford
Ryan, of the Daily News	Ted Smethers
Pusey	Don Ramsey
Miss Freud	Patty Broyles
Winifred Allen	Sue Schimmel
Summers	Lyndall Stockebrand
Johnson	Owen Mooney
Rosenthal	Carol Karnes
Frances X. Nella	Sue Schimmel
Aubrey McKittridge	Doug Sheward

Scenes:

The entire action of the play occurs in the sitting room of a suite, and in the hallway of a not-now fashionable hotel in New York City. The time is the present.

We are following the suggestion of the original producer with one exception. Please indulge us and assume that only 26 years have passed since 1932.

"As *The Girls in 509* is a political satire and is, therefore, somewhat subject to the light whims and fancies of time and personalities, permission is hereby granted to future producers and/or directors to bring up to date those few lines which, from moment to moment, may require such assistance."

ACT ONE

Scene 1: Noon. April 2nd.

Scene 2: A few minutes later.

ACT TWO

Scene 1: One minute later.

Scene 2: Morning. April 3rd.

Scene 3: Evening.

There will be one 15-minute intermission.

Produced by arrangement with Samuel French, Inc., New York.

DAMES AT SEA

A Musical Comedy

Book and Lyrics by

George Haimsohn and Robin Miller

Music by

Jim Wise

Directed by

DON RAMSEY

Choreography

PIPER PICKRELL

Musical Director

JOHN E. COX

Costumes

DAWN MURRELL

CAST:

Mona Kent Nancy Flagg
Joan Susan McCrate
Hennesey Jim Wright
Ruby Pam Handshy
Dick Steve Allen
The Captain Eric Young
Lucky Keith Welty

Chorus Teresa Wallen, Amber Crawford
Margaret Seidler, Sue Blancho, John Ploof
Paul LaBounty, Randy Buford, Bob Tindel
Extras Linda Bush, Janis Miller

TIME:

The Early 30's:

ACT ONE:

Any 42nd St. Theatre.

ACT TWO:

On the Battleship

Musical Numbers

ACT ONE

Wall Street Mona & Company
It's You Dick and Ruby
Broadway Baby Dick
That Mister Man of Mine Mona & Co.
Choo-Choo Honeymoon Joan & Lucky
The Sailor of My Dreams Ruby
Singapore Sue Lucky & Co.
Good Times are Here to Stay Joan & Co.

ACT TWO

Dames at Sea Company
The Beguine Mona & Captain
Raining in My Heart Ruby & Company
There's Something About You Dick & Ruby
Raining in My Heart (Reprise) Ruby
The Echo Waltz Company
Star Tar Ruby and Company
Let's Have a Simple Wedding Company

There will be one 15-minute intermission.

Mrs. Rodley - Smolay Hill

The Playhouse on Broadway is grateful to the following, among many others for their assistance. A theatre cannot operate without friends.

THANK

YOU!



Collegio - KSCP
Morning Sun - Pittsburg
KOAM Radio - Pittsburg

KOAM TV - Pittsburg
KSEK-KMRJ Radio - Pittsburg
KFSB Radio - Joplin
WMBH Radio - Joplin
KSYN FM Radio - Joplin
KODE Radio - Joplin
KODE TV - Joplin
KTVJ TV - Joplin

Kansas State College of Pittsburg



**KANSAS STATE COLLEGE OF PITTSBURG
DEPARTMENT OF SPEECH AND THEATRE**

PLAYHOUSE-ON-BROADWAY

SUMMER OF '76

The PLAYHOUSE-ON-BROADWAY Summer Theatre is back with plans for a great season of celebration. This summer the nation celebrates its Bicentennial, the city of Pittsburg celebrates its Centennial, and the PLAYHOUSE celebrates its FIFTEENTH YEAR of satisfying what our audiences want most—the best in lively entertainment! We begin our celebration on June 19 and perform through July 25.

The PLAYHOUSE Season—performed in modified repertory—usually includes two great musicals, a comedy or drama, and a children's theatre production. Located on the north corner of the KSCP campus at the intersection of South Broadway and Cleveland Street, the PLAYHOUSE seats 250 people in air-conditioned comfort. A non-equity acting company, the PLAYHOUSE is an educational theatre organization. While we can offer no salaried positions for ACTORS, the PLAYHOUSE provides unique employment and educational opportunities for actors and students in the following categories: DIRECTORS, SCENIC DESIGNERS, MUSICAL DIRECTOR, CHOREOGRAPHERS, STAGE MANAGER, COSTUMIER, HOUSE MANAGERS, LIGHTING DESIGNERS, and TECHNICIANS!

A limited number of Seasonal Civil Service positions are available, up to forty hours per week. Most of these positions are supervisory in nature and demand previous experience and full-time availability. We also hire students for summer theatre employment through funds from the College Work-Study Program. Student employees work from fifteen to forty hours a week depending upon financial need, grade-point average and class load.

While enrollment is not mandatory, PLAYHOUSE participants are encouraged to earn college credit in Summer Theatre by concurrent enrollment in one of the following courses:

- | | |
|--------------|---|
| SPEECH 133 - | Introduction to Summer Theatre Practice - 3 credits
(Freshmen and Sophomore level) |
| SPEECH 333 - | Summer Theatre Practice - 3 credits
(Junior and Senior level) |
| SPEECH 760 - | Project in Theatre - 2 credits
(Senior/Graduate level) |
| SPEECH 843 - | Educational Theatre Organization - 3 credits
(Graduate level only) |

PLAYHOUSE '76 REPERTOIRE

Although exact selections will not be announced until auditions in early May, the following titles are among the shows being considered for KSCP Summer '76 celebration:

Plays

Three Men on a Horse
The Girls in 509
You Can't Take It With You
George Washington Slept Here
Ten Little Indians
Death of a Salesman
Sunrise at Campobello

Musicals

Anything Goes
Dames at Sea
Showboat
Oliver
Jacques Brel
Pippin (if available)

Children's Plays

The Thirteen Clocks
Johnny Moonbeam and the Silver Arrow
Simon Big Ears
Tom Sawyer

AUDITIONS

Auditions will be held on May 2 and May 9 at 2:00 p.m. in the Theatre Lab, Room 108 Grubbs Hall, on the KSCP Campus. Interested persons are invited to attend on either date. Those who have resumes and portfolios are encouraged to bring them.

OUR COVER—A LOOK TO THE PAST

The Bicentennial Year brings with it a mood of nostalgia. Caught up in this spirit, we dug into the archives for pictures from the seventy shows that have been on the boards during the past fourteen seasons of KSCP Summer Theatre. From those files we selected the group of action shots which comprise the montage of photos on our cover.