

Pittsburg State University

Pittsburg State University Digital Commons

Carson J. Robison Music Scores

Carson J. Robison, the Cowboy Radio Singer,
1903-1988

2015-01-01

A Ridin' Ol' Paint and a Leadin' Ol' Dan

Carson Robison

Follow this and additional works at: <https://digitalcommons.pittstate.edu/cjrms>

Recommended Citation

Robison, Carson, "A Ridin' Ol' Paint and a Leadin' Ol' Dan" (2015). *Carson J. Robison Music Scores*. 90.
<https://digitalcommons.pittstate.edu/cjrms/90>

This Sheet Music is brought to you for free and open access by the Carson J. Robison, the Cowboy Radio Singer, 1903-1988 at Pittsburg State University Digital Commons. It has been accepted for inclusion in Carson J. Robison Music Scores by an authorized administrator of Pittsburg State University Digital Commons. For more information, please contact digitalcommons@pittstate.edu.

Refined

A RIDIN' OL' PAINT AND A LEADIN' OL' DAN

A blank sheet of musical manuscript paper with 12 horizontal staves, each consisting of five lines. The staves are evenly spaced and cover the majority of the page area.

A RIDIN' OL' PAINT AND A LEADIN' OL' DAN

Tenor

A THE RID---IN' OL' PAINT AND A LEAD---IN' OL' LONG

DAN--- I'M A GOIN' TO MON---TAN---A FOR TO RIDE-- BUT THERES NOTH---IN' TO WEAR WITH MY---

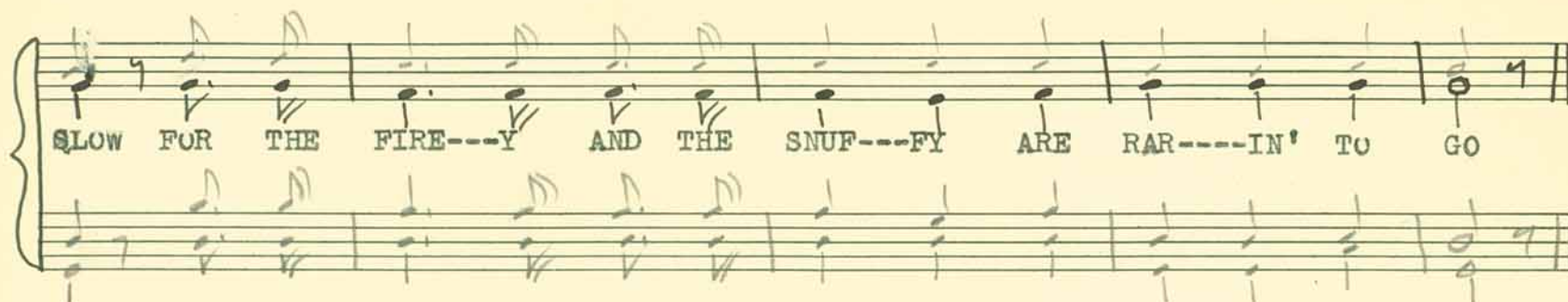
THROW THE HOOL---A---HAN THEY FEED IN THE BUSH---ES AND PIS---TOL BY MY SIDE MY FAITH---FUL OL' PAINT--- WILL

WAT---ER IN THE DRAW THEIR TAILS ARE ALL MAT---TED AND THIER CAR---RY ME A---LONG AND WHEN WE GIT LONE---SOME I'LL---

BACKS ARE ALL RAW SING US A SONG

CHORUS

RIDE ROUND THE LIT---TLE DOG-----IES RIDE A---ROUND 'EM



3. OH WHEN I DIE
TAKE MY SADDLE FROM THE WALL
PUT IT ON MY OL' PONY AND LEAD 'IM FROM THE STALL
TIE MY BONES TO THE SADDLE
TURN OUR FACES TO THE WEST
AND WE'D RIDE THE LONG TRAIL
THAT WE BOTH LOVE THE BEST

A RIDIN' OL' PAINT AND A LEADIN' OL' DAN

First 2 verses and Chorus
re-written by Carson Robison

Lead *+ Blue*
In A

A RIDIN' OL' PAINT AN' A LEADIN' OL' DAN I'M A
THE TRAIL THAT I'M TRAV-LIN' IS A LONG LONG RIDE BUT THERES
GOIN' TO MON-TAN-A AS FAST AS I CAN I'M TIRED O' THIS
NOTH-IN' TO FEAR WITH MY GUN BY MY SIDE MY FAITH-FUL OL'
WAN-DE-RIN' AND ROAM-IN' A-ROUND AN' WHEN I GIT OUT THERE I'LL
BRON-CHO WILL CAR-RY ME A-LONG AN' WHEN WE GIT LONE-SOME I'LL
SET-TLE ME DOWN
SING US A SONG

CHORUS

MOVE ON LIT-TLE DO-GIES I'M TIRED AN' I'M-- SORE BUT I'M
GOIN' TO MON-TAN-A TO RAM-BLE NO MORE

OH WHEN I DIE TAKE MY SADDLE FROM THE WALL
PUT IT ON MY OL' PONY AND LEAD 'IM FROM THE STALL
TIE MY BONES TO THE SADDLE TURN OUR FACES TO THE WEST
AND WE'LL RIDE THE LONG TRAIL THAT WE BOTH LOVED THE BEST

Public Domain

PARTIAL COPYRIGHT BY Carson J. Robison (See above)

A RIDIN' OL' PAINT

1 Vamp

2100

G

A RIDIN' OL' PAINT
AND A LEADIN' OL' DAN
I'M A GOIN' TO MONTANA
FOR TO THROW THE HOOLIHAN
THEY FEED IN THE BUSHES
AND WATER IN THE DRAW
THEIR TAILS ARE ALL MATTED
AND THEIR BACKS ARE ALL RAW

CHORUS***

RIDE ROUND THE LITTLE DOGIES
RIDE AROUND 'EM SLOW
FOR THE FIREY AND THE SNUFFY
ARE RARIN' TO GO

THE TRAIL TO MONTANA
IS A LONG LONG RIDE
BUT THERES NOTHIN' TO FEAR
WITH MY PISTOL BY MY SIDE
MY FAITHFUL OL' BRONCHO
WILL CARRY ME ALONG
AND WHEN WE GIT LONESOME
I'LL SING US A SONG

Chorus -

Inst. Cho

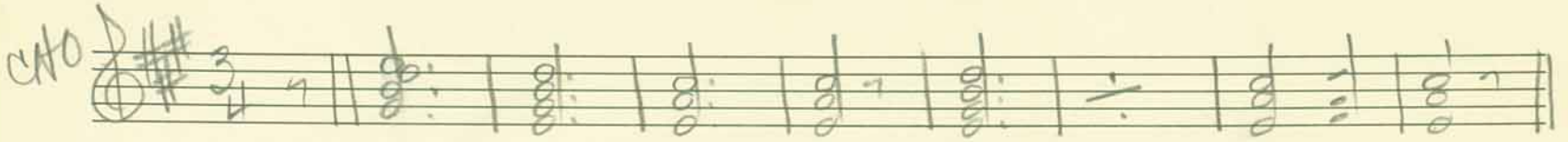
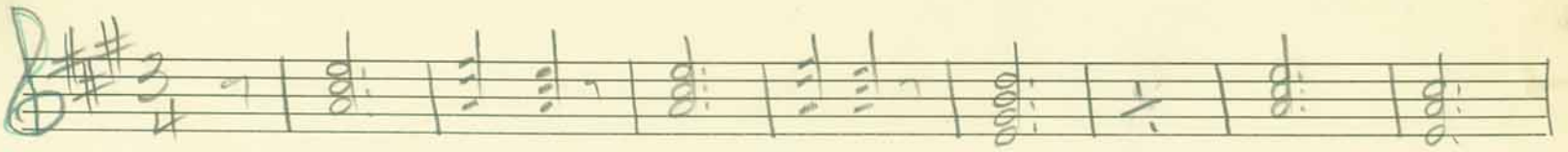
OH WHEN I DIE
TAKE MY SADDLE FROM THE WALL
PUT IT ON MY OL' PONY
AND LEAD IM FROM THE STALL
TIE MY BONES TO THE SADDLE
TURN OUR FACES TO THE WEST
AND WE'LL RIDE THE LONG TRAIL
THAT WE BOTH LOVED THE BEST

Word Book

[Large handwritten signature or scribble across the bottom right of the page]

acord

A RIDIN' OLD PAINT AND A LEADIN' OLD DAN



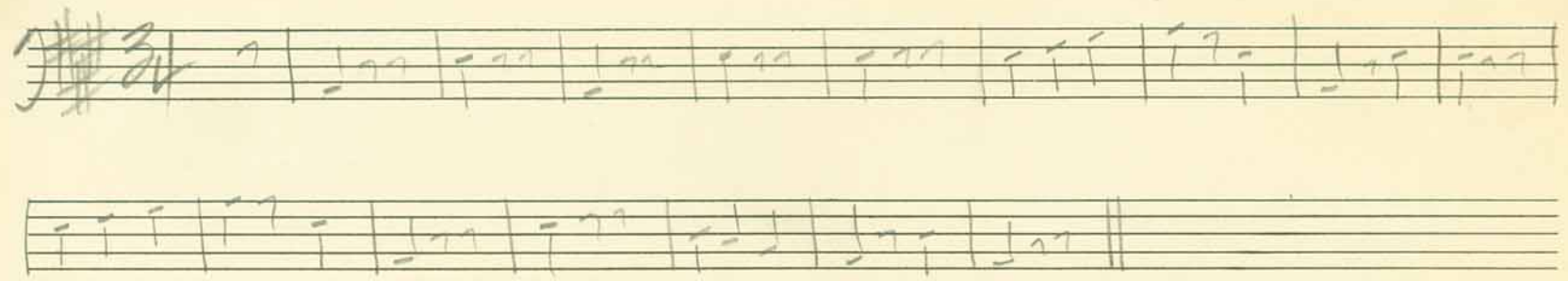
1+1
1+1

Musicians
g#

Pass

A RIDIN' OL' PAINT

*343
with rumps*



vocal 1 & 1

rump - 1 & 1

A RIDIN' OL' PAINT & LEADIN' OL' DAN

First two verses & Chorus
re-written by Carson Robison

John & Bobby

1

A RID---IN' OL' PAINT-- AN' A LEAD---IN' OL' DAN I'M A
THE TRAIL THAT I'M TRAV-LIN' IS A LONG--- LONG RIDE BUT THERES

GOIN' TO MON---TAN---A AS FAST AS I--- CAN I'M TIRED O' THIS
NOTH---IN' TO FEAR WITH MY GUN BY MY--- SIDE MY FAITH--FUL OL'

WAN--D'RIN' AND ROAM---IN' A---ROUND AN' WHEN I GIT OUT THERE I'LL
BRON--CHO WILL CAR---RY ME A---LONG AN' WHEN WE GIT LONE-SOME I'LL

SET---TLE ME DOWN
SING US A SONG

CHO

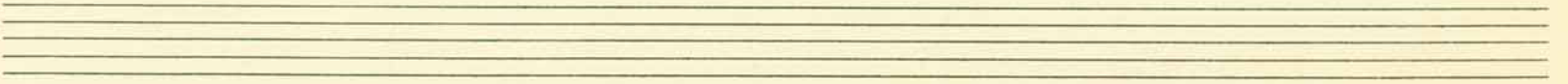
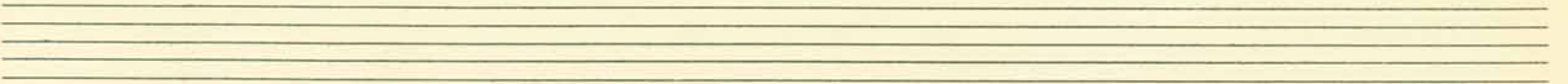
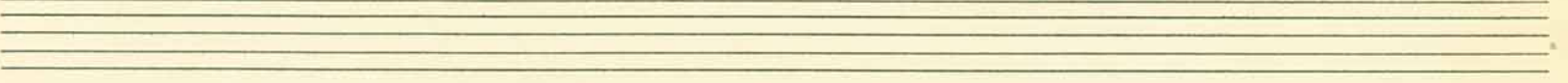
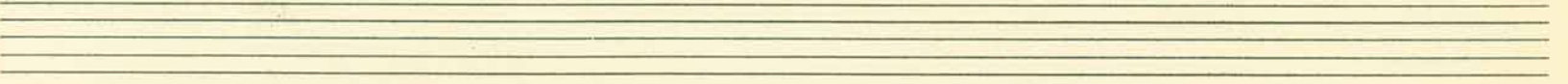
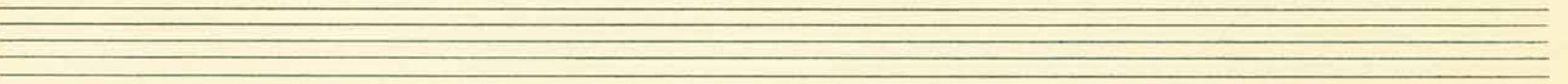
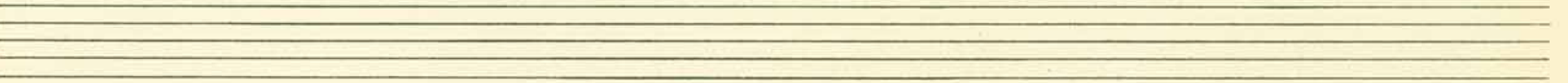
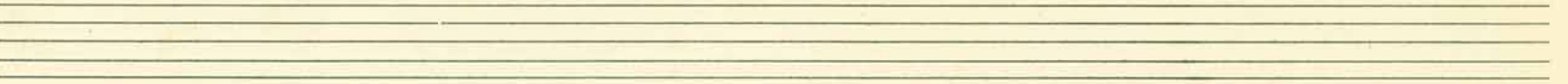
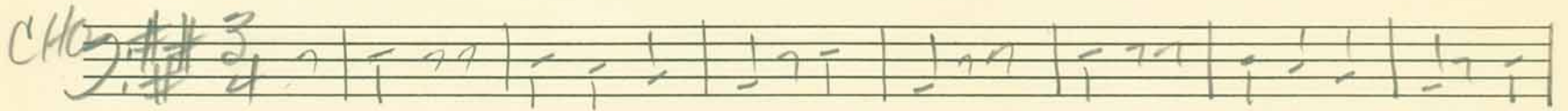
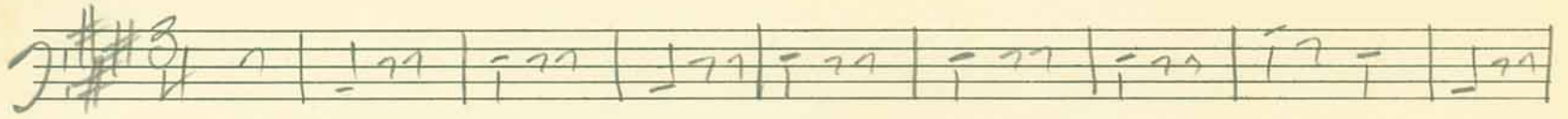
MOVE ON LIT--TLE DO--GIES I'M TIRED AN' I'M-- SORE BUT I'M

GOIN' TO MON---TAN---A TO RAM---BLE NO MORE

3

OH WHEN I DIE TAKE MY SADDLE FROM THE WALL
PUT IT ON MY OL' PONY AND LEAD 'IM FROM THE STALL
TIE MY BONES TO THE SADDLE TURN OUR FACES TO THE WEST
AND WE'LL RIDE THE LONG TRAIL THAT WE BOTH LOVE THE BEST

A RIDIN' OL' PAINT AN' LEADIN' OL' DAN



A RIDIN' OL' PAINT

2:00

*John
Robb* "A" one Vamp

A RIDIN' OL' PAINT
AND A LEADIN' OL' DAN
I'M A GOIN' TO MONTANA
FOR TO THROW THE HOOLIHAN
THEY FEED IN THE BUSHES
AND WATER IN THE DRAW
THEIR TAILS ARE ALL MATTED
AND THEIR BACKS ARE ALL RAW

CHORUS*****

RIDE ROUND THE LITTLE DOGIES
RIDE AROUND 'EM SLOW
FOR THE FIREY AND THE SNUFFY
ARE RARIN' TO GO

THE TRAIL TO MONTANA
IS A LONG LONG RIDE
BUT THERE'S NOTHIN' TO FEAR
WITH MY PISTOL BY MY SIDE
MY FAITHFUL OL' BRONCHO
WILL CARRY ME ALONG
AND WHEN WE GIT LONESOME
I'LL SING US A SONG

Banjo-chorus

chorus
OH WHEN I DIE
TAKE MY SADDLE FROM THE WALL
PUT IT ON MY OL' PONY
AND LEAD 'IM FROM THE STALL
TIE MY BONES TO THE SADDLE
TURN OUR FACES TO THE WEST
AND WE'LL RIDE THE LONG TRAIL
THAT WE BOTH LOVED THE BEST

vocal chorus

Nevada

A RIDIN' OL' PAINT

"A"

141

141

A RIDIN' OL' PAINT
AND A LEADIN' OL' DAN
I'M A GOIN' TO MONTANA
FOR TO THROW THE HULLIHAN
THEY FEED IN THE BUSHES
AND WATER IN THE DRAW
THEIR TAILS ARE ALL MATTED
AND THEIR BACKS ARE ALL RAW

CHORUS*

RIDE ROUND THE LITTLE DOGIES
RIDE AROUND 'EM SLOW
FOR THE FIREY AND THE SNUFFY
AND RARIN' TO GO

Ave

THE TRAIL TO MONTANA
IS A LONG LONG RIDE
BUT THERE'S NOTHIN' TO FEAR
WITH MY PISTOL BY MY SIDE
MY FAITHFUL OL' BRONCO
WILL CARRY ME ALONG
AND WHEN WE GIT LONESOME
I'LL SING US THIS SONG

CHORUS

OH WHEN I DIE
TAKE MY SADDLE FROM THE WALL
PUT IT ON MY OL' PONY
AND LEAD 'IM FROM THE STALL
TIE MY BONES TO THE SADDLE
TURN OUR FACES TOWARD THE WEST
AND WE'LL RIDE THE LONG TRAIL
THAT WE BOTH LOVED THE BEST

CHORUS

Watch walls for
fade -
cut with
deer

"G" ~~Barn Dance~~

A RIDIN' OL' PAINT

1

Brain Bass

1st - inst - 1st 2

2nd 3 4

A RID---IN' OL' PAINT AND A LEAD---IN' OL' DAN-- I'M A---

GOIN' TO MON---TAN---A FOR TO THROW THE HODL---I---HAN THEY

FEED IN THE BUSH---ES AND WAT---ER IN THE DRAW THEIR

TAILS ARE ALLL MAT---TED AND THEIR BACKS ARE ALL RAW

2nd 3 4

RIDE ROUND THE LIT---TLE DO---GIES RIDE A---ROUND 'EM

SLOW FOR THE FIE-----RY AND THE SNUF---FY ARE RAR---IN' TO GO

THE TRAIL TO MONTANA IS A LONG LONG RIDE
BUT THERE'S NOTHIN' TO FEAR WITH MY PISTOL BY MY SIDE
MY FAITHFUL OL' PAINT WILL CARRY ME ALONG
AND WHEN WE GIT LONESOME I'LL SING US A SONG

OH WHEN I DIE TAKE MY SADDLE FROM THE WALL
PUT IT ON MY OL' PONY AND LEAD HIM FROM THE STALL
TIE MY BONES TO THE SADDLE TURN OUR FACES TO THE WEST
AND WE'LL RIDE THE LONG TRAIL THAT WE BOTH LOV THE BEST

"A"

A RIDIN' OL' PAINT

A RIDIN' OL' PAINT
AND A LEADIN' OL' DAN
I'M A GOIN' TO MONTANA
FOR TOT THROW THE HULLIHAN
THEY FEED IN THE BUSHES
AND WATER IN THE DRAW
THEIR TAILS ARE ALL MATTED
AND THEIR BACKS ARE ALL RAW

CHORUS

RIDE ROUND THE LITTLE DOGIES
RIDE AROUND 'EM SLOW
FOR THE FIREY AND THE SNUFFY
ARE RARIN' TO GO

THE TRAIL TO MONTANA
IS A LONG LONG RIDE
BUT THERE'S NOTHIN' TO FEAR
WITH MY PISTOL BY MY SIDE
MY FAITHFUL OL' BRONCHO
WILL CARRY ME ALONG
AND WHEN WE GIT LONESOME
I'LL SING US THIS SONG

CHORUS

OH WHEN I DIE
TAKE MY SADDLE FROM THE WALL
PUT IT ON MY OL' PONY
AND LEAD 'IM FROM THE STALL
TIE MY BONES TO THE SADDLE
TURN OUR FACES TO THE WEST
AND WE'LL RIDE THE LONG TRAIL
THAT WE BOTH LOVED THE BEST

~~Barn Dance~~

watch for
fade
over
G
cut