

Johnson county and provided for the payment of the mileage assessment.

We then went back to Paola for lunch and took the back track through Mound City for Fort Scott where a meeting was scheduled for that night.

## AT FORT SCOTT, KANSAS

Here we were entertained at a banquet at the Elks Club. After a very satisfying experience with Fort Scott's hospitality, an adjournment was taken to the assembly room up stairs where the affairs of the Highway were fully discussed.

## FROM FT. SCOTT TRIBUNE

Fort Scott and Bourbon county are now on the Jefferson Highway, or virtually so, as Secretary Russell, of the Chamber of Commerce has been authorized to pay the entrance fee for Bourbon county, which is about \$270, the charge being \$9 a mile, and as the papers officially designating the route through this county as a part of the Highway, will soon be received. That the payment of the fee, and the receipt of the necessary papers were the only things standing in the way of the route through this county being a part of the Highway was the rather surprising news imparted to the local Highway boosters last night at the meeting at the Elks' home by J. D. Clarkson, General Manager of the Jefferson Highway. It had been thought here that a contest of several months' duration between Kansas and Missouri for the route through this section was still in progress, and that in the near future one of the routes would be definitely chosen as the official route, the other being left out entirely, and the choice depending upon which had the most miles of north and south rock roads built, under way, or contracted for. But Mr. Clarkson said that both states have shown such enthusiasm, have spent so much money, having worked so hard to secure the section of the Highway through here, that the officials had considered it unfair to deprive either of the right of being upon the Highway as officially designated, and had therefore decided to put both routes on the Highway, and give Kansans and Missourians equal rights.

The organization of the Bourbon County Jefferson Highway Association was perfected at the meeting, Mr. Clarkson, and S. Wolstencroft, Publicity Manager of the Highway, who arrived yesterday afternoon from the north in their Chalmers gift car, the car given to them by Hugh Chalmers, as an expression of his approval of the Jefferson Highway project, aiding in this work. The officers and directors chosen were: F. H. Niles, Fulton, President; H. A. Russell, Ft. Scott, Secretary; C. M. Howard; Ft. Scott; Chas. Blubaugh, Ft. Scott; I. E. Morrison, Pawnee, and

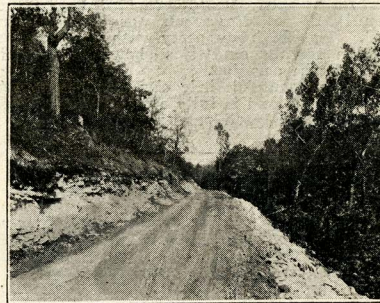
A. B. Dickmann, Ft. Scott. R. S. Tiernan, one of the directors of the Kansas route also aided in the work of perfecting the organization, which was done after those present had enjoyed a sumptuous chicken supper in the banquet room, and after they had heard most interesting talks by Mr. Clarkson and Mr. Wolstencroft.

Mr. Clarkson in his talk spoke of the general desire that is being expressed by different localities from north to south to secure a section of the Jefferson Highway. The speaker said this desire for the Highway was most plainly in evidence where contests had arisen for a section, such as that between Kansas and Missouri or that in Minnesota, north of St. Paul and Minneapolis.

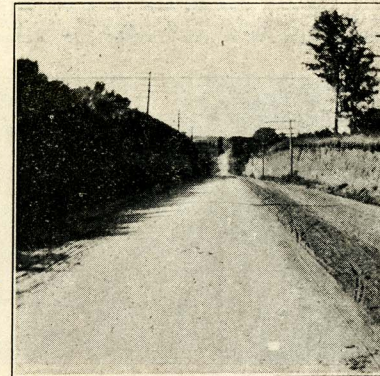
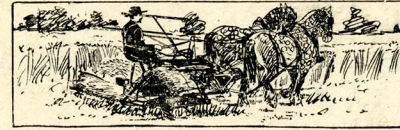
## AT STRENUOUS DAY'S WORK

Closing the meeting at Paola on Thursday at midnight, we commenced operations. Friday morning at six o'clock and by midnight had traveled one hundred and fifty miles, visited and drawn together in community work and fully qualified for the Highway, fifteen towns. Those Jayhawkers are some goers when they get warmed up.

We claim that the Highway is as valuable to any community through which it runs as another line of railroad. Does this day's work tend to prove it?



A sample of the rock roads and scenery  
in the Ozarks near Gravette



Macadam road between St. Joseph and Dearborn, Mo.,  
on the Jefferson Highway



E. T. MEREDITH, Pres. Des Moines, Ia. D. N. FINK, V-Pres. Muskogee, Okla.

WALTER PARKER, Secretary  
New Orleans, La.

F. J. WRIGHT, Treas. J. D. CLARKSON, Gen. Mgr.  
Des Moines, Ia. Des Moines, Ia.

# Jefferson Highway Association

General Manager's Travel  
Letter No. 11





## AT LAMONI, IOWA

The time having arrived to visit headquarters, and Lamoni wishing to put on a Big Gala Day in honor of the Jefferson Highway, it was planned to stop off there for that event.

The day dawned threatening rain, and as that portion of Iowa has not put roofs on its roads yet, the prospects of rain intimidated many from attempting the trip. But as it cleared up by noon, the nearby people came in and made quite a satisfactory crowd and the occasion will be remembered with pleasure by all who attended.

## AT TIFFNEY SPRINGS, MISSOURI

Good roads meetings in Platte County, Mo., have not been very frequent of late, but they had a good one at Tiffney Springs. This is a beautiful walnut grove with many springs flowing all the year. If the Jefferson Highway was routed past or near this spot, it would soon become a favorite resort for tourists. Judge Alonzo D. Burns, of Platte City, presided. E. E. Peake, the good roads apostle, of Kansas City, F. W. Hawley, President of Park College and others made pleadings eloquently and logically for better roads for Platte county. Over one thousand were in attendance and all went away determined to work for the Jefferson Highway and its feeders.

## AT WEBB CITY, MISSOURI

A few of the faithful gathered in the afternoon at the Commercial Club and were told about the value of the Highway. They soon became enthused with a desire for action and appointed Geo. W. Ball for their member of the Jasper county directory and Judge J. A. Daugherty, of Carterville, was named to represent Carterville.

Hearing that Cass County, Missouri, had raised their initiation fee (mileage) in one hour and forty-five minutes, Bob Stewart and Mr. Jerrard started out to beat that record. They said they would do it in fifteen minutes, but in eight minutes, they returned with the fund made up.

## AT JOPLIN, MISSOURI

A few gathered in the Commercial Club rooms and after hearing a brief account of what was being done on the Highway, named Howard Murphy as their representative, and agreed to pay the mileage for the twenty-three miles north of Opolis on the road to Pittsburg, Kansas. This was in addition to what had already been paid as a high point.

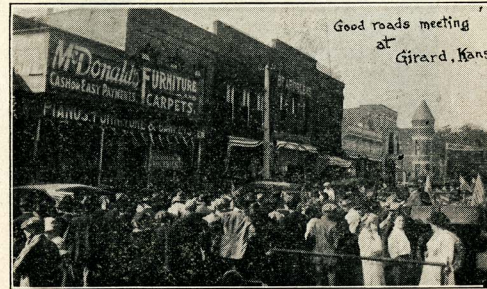
## AT PITTSBURG, KANSAS

Clipping from Pittsburg Daily Headlight:

### Formed a Crawford Jefferson Highway Association

Pittsburg is to Have Four Directors and Girard Three, it's Planned. Manager Clarkson Spoke to Large Audience Here Last Night on the Progress of "Pine to Palm" Road—Meet at County Seat

Organization of the Jefferson Highway Association in Crawford county was effected at a meeting last night of the Crawford County Highway Association and kindred interests in the Chamber of Commerce



An example of the kind of crowds which attend the good roads meetings in Girard, Kansas

rooms, with the assistance of the general manager of the Association, J. D. Clarkson. Four directors were elected, and Girard will be asked to name the remaining three of the board. The good roads men agreed to pay Pittsburg's share of the membership assessment, four-sevenths, or the whole sum if necessary. The assessment is based on the Jefferson Highway mileage across the county at \$9 a mile. The sum of \$150, already paid as a membership fee in accordance with the action of the Kansas City directors' conference which fixed the rate for Missouri and Kansas at \$5 a mile, is insufficient, Mr. Clarkson reported, as it would be discrimination against other counties paying the \$9 rate. The directors are: M. O. French, J. Luther Taylor, M. M. Hartzell and J. H. Seeley. The board is to meet at 2 P. M. Thursday at Girard

at the call of Mr. Clarkson. Mr. Clarkson was in Girard today to organize that end of the county. The rules of the Jefferson Association require the directors to meet in the county seat.

The Chamber of Commerce assembly hall was crowded last night and the greatest enthusiasm prevailed. Mr. Seeley, who heads the Crawford County Association presided. S. Wolstencroft, the publicity man, spoke briefly about the educational purposes of the Jefferson Association's official publication.

### Missourians Want Route

Mr. Clarkson said he had just come down the Missouri side and that the people were ambitious to qualify for the Highway. In that state, as in all others, it was necessary for all the counties along the route to qualify, and Missouri had not yet come up to the mark.

## AT GIRARD, KANSAS

A luncheon was served in the hotel dining room at which some seventy-five business men and farmers were present. There were also present, nine of a committee of sixteen of the Crawford County, Jefferson Highway Club.

They were advised of what was being done generally all along the Highway and specifically of what had been done at Pittsburg in the same county the night before, and a suggestion was made to join with Pittsburg and the seat of the county, in completing the Crawford County Board, provided for by the Association By-Laws. No action was taken looking to this end. The Highway party wish to express their appreciation for the courtesies shown in providing a luncheon for the occasion.

Girard is a beautiful little city and county seat of Crawford county, and is fully awake to the advantages of good roads and good paving.

## AT MOUND CITY, KANSAS

A run was made to Linn county, some fifty miles, and a meeting held that night in the opera house at Mound City. The meeting was well attended, and a board of directors of Linn county was appointed. The Highway party was the guests of the Mound City Commercial Club while in the city, and all wish to extend thanks for the courtesies received.

## AT OSAWATOMIE, KANSAS

The community spirit is highly developed at this point. This was manifested in many ways.

When we arrived within six miles of town, we

passed two automobiles by the road side loaded with ladies and gentlemen and the men had just finished fixing a bumpy culvert, throwing in the last shovelful of dirt as Old Jeff (that is the pet name of the Chalmers car we are driving) struck the spot.

This was only the vanguard of the escort that Osawatomie had sent out to meet us at the busy hour of ten o'clock in the morning. A short distance down the road they began to appear in twos and threes till a score or more were gathered.

The next evidence of community spirit was a luncheon held at one o'clock in the afternoon of a busy day at which over a hundred of the busy people of Osawatomie devoted more than three hours to the consideration of a community affair (The Jefferson Highway). The fact that several busy men came down from Paola to attend this luncheon and co-ordinate the interests of these two communities was another pleasing evidence of the fact that the Jefferson Highway has the faculty of rubbing off some of the asperities that occasionally exist between neighboring towns.

The luncheon was a delightful affair held in the recently erected Elks home.

Jefferson Highway tourists are going to like Osawatomie; we certainly liked it.

## AT PAOLA, KANSAS

A short run brought us to Paola where a sumptuous banquet was served that night to over a hundred persons, including people from Mound City and Osawatomie.

The meeting closed at midnight after a vigorous program had been agreed upon for the next day to commence at six o'clock in the morning.

Owing to other activities at Olathe in Johnson county, Kansas, we had been unable to get a meeting at this point, although it was understood that Olathe wanted the Highway.

It was suggested by some that the Highway could be diverted to the east at Paola and reach Kansas City through Missouri, but others thought if Olathe once had an understanding of the matter her people would gladly qualify for the Highway. So it was arranged that an early start was to be made and a carload of people from Mound City, one from Osawatomie, another from Paola and a fourth from Spring Hill, together with the Highway party, went to Olathe and laid the matter before her people and let them determine whether they wanted to voluntarily, cheerfully and harmoniously qualify for the Highway.

As soon as the matter was briefly explained to them, they did promptly elect a board of directors for