

Pittsburg State University

Pittsburg State University Digital Commons

Apple Day Programs, 1908-2016

University Archives

3-5-1964

Commemoration Day Assembly, 1964

Kansas State College of Pittsburg

Follow this and additional works at: <https://digitalcommons.pittstate.edu/apple-day>

Recommended Citation

Kansas State College of Pittsburg, "Commemoration Day Assembly, 1964" (1964). *Apple Day Programs, 1908-2016*. 80.

<https://digitalcommons.pittstate.edu/apple-day/80>

This Book is brought to you for free and open access by the University Archives at Pittsburg State University Digital Commons. It has been accepted for inclusion in Apple Day Programs, 1908-2016 by an authorized administrator of Pittsburg State University Digital Commons. For more information, please contact digitalcommons@pittstate.edu.

Commemoration Day Assembly

COMMEMORATING APPLE DAY

MARCH 8, 1905

Kansas State College of Pittsburg

Thursday, March 5, 1964

10:30 a.m.

Selections by the College Band

Group Singing: "Star Spangled Banner"

The Origin of Commemoration Day, President Leonard H. Axe

Looking at 1914-1915 with Professor O. F. Grubbs

Election of Kanza Queen, conducted by David Van Hooser, editor of
the Kanza

Who's Who in American Colleges and Universities, introduced by
Dean Denmar Cope

Louie Barney	Vera Macklin	Glenna Richardson
Katherine Bradshaw	Walter Mason	Erma Rose
John Brunet	Frank Matteucci	Douglas Scherer
Dorothy Carlyon	Judith Menghini	Martin Shepard
Barbara Dixon	Sharon Moore	Tara Shideler
Kenneth Doffing	Sue Ooley	James Spigarelli
Harry Frizzell	David Palmer	Jane Stine
Judith Hastings	Carl Parker	Robert Sullivan
Willis Heydenberk	Sammy Pennington	Lawrence Thompson
David John	Joan Pistotnik	Norberta Wachter
George Lampe	Virgil Potts	Mary Walker
Lana McCullough	Janice Reda	Wayne Young

Group Singing: "Gold and Crimson"

On the plains of Southeast Kansas,
'Neath an ever cloudless sky,
Far away from surging ocean,
And the storm-bird's plaintive cry;
With her prairies rolling Westward,
Where the Red men once roamed free,
With her ensign proudly waving,
Stands our own K.S.C.

Let us greet the Gold and Crimson,
With a strong and cordial cheer;
Let our hearts be ever loyal,
To our Alma Mater dear.

We her faithful sons and daughters,
For our college proudly stand,
May we ever sing her praises,
Let them ring throughout the land;
We will hold aloft her banner,
Loyal and true we'll always be,
To our school and to her colors,
Hail to thee, K.S.C.

Let us greet the Gold and Crimson,
With a strong and cordial cheer;
Let our hearts be ever loyal
To our Alma Mater dear.

The New Russ Hall

The outside of the new Russ Hall will be the same as before the fire, except that it will be seven feet higher, a five-foot border of terra cotta design will adorn the top story, and a brick wall will extend six feet above the roof, making a fire proof wall,

Due to the need of class rooms this fall, the north part of the building has been replaced with practically the same kind of building material as there was before the fire, with this change, however: the windows opening from the class rooms into the halls have been sealed up, leaving only a small alcove on the hall side for pieces of statuary—expected to be donated. Also, the floors of the north and central parts of the building have their wooden beams embedded in concrete, making the halls entirely fire proof.

For each floor, between the north and central parts of the building, a fire-proof door has been planned.

The central and south sections of the building will be made of fire-proof material throughout. Re-enforced concrete posts will support the new east walls of the central part, and the middle part of the south wall. The floors are to consist of steel beams embedded in concrete with re-enforced concrete flooring. The roof is to be made of steel and concrete, and will have the above mentioned eight feet of brick walls raised above its sides. Three stories of the entire building were reconstructed into their general form by the end of October.

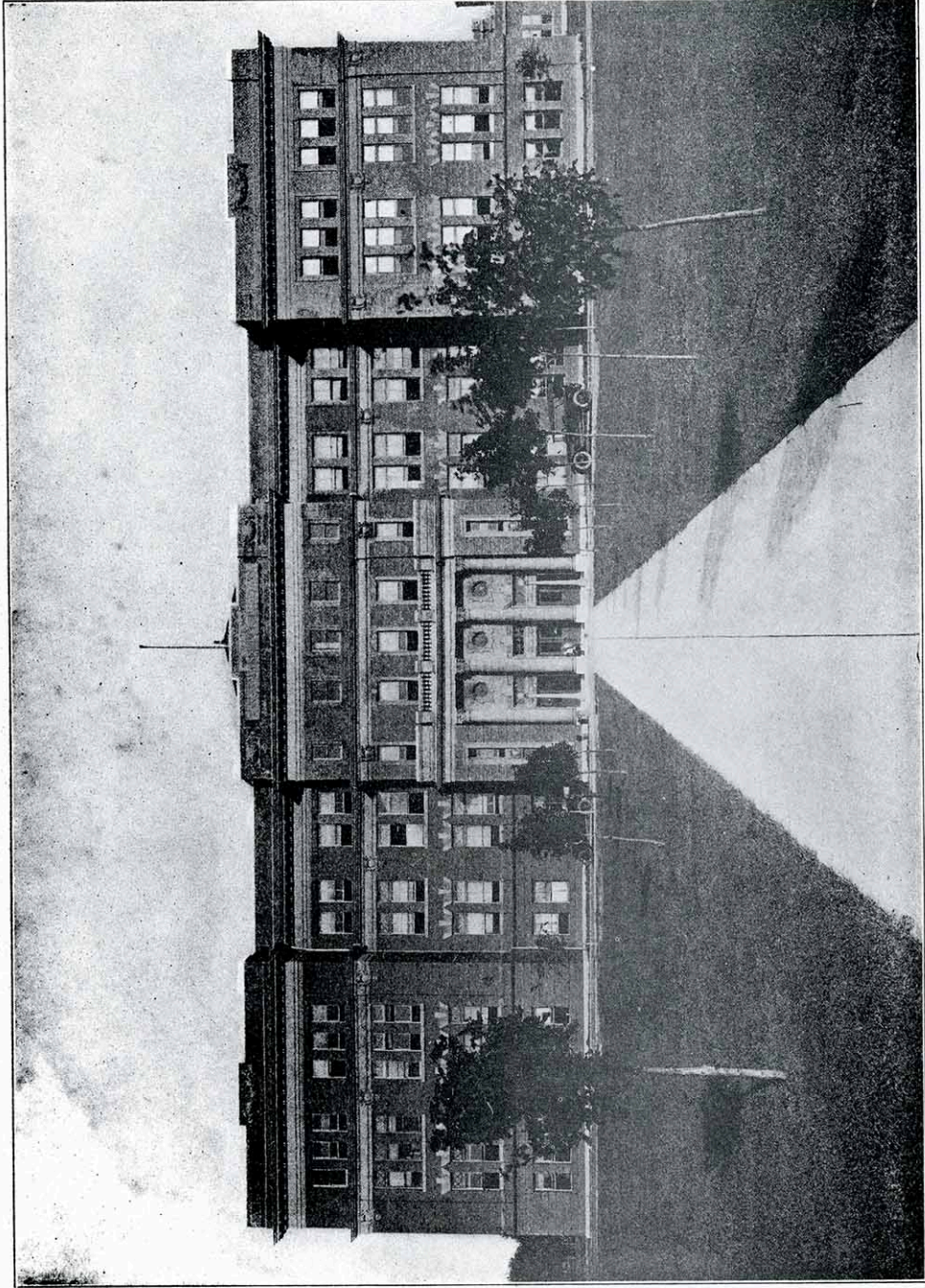
Much internal alteration is designed for the new Russ Hall. In the basement (called the first floor by some) the gymnasium remains as before. As one enters the front entrance hall, he will be greeted by a very beautiful white marble stairway, in place of the beloved wooden one. The library will occupy all but two small rooms of the first floor of the south section, these rooms of the library are to be connected by open archways. The office has already been enjoying increased space, having annexed two rooms just south of its former ones. These are occupied by the accrediting committee and the registrar.

The chemistry department has been enjoying practically the whole north part of the second floor. The domestic science department is an equal competitor, choosing as its field the south end of this floor. The auditorium, which occupied this floor will be made into three large class rooms. The north end of the third floor has been remodeled into two elegant society halls—Manus Verez and Porterian.

The central part of the building will contain a recital hall, equal in size to the old auditorium, but without the gallery.—Manualite.

The September students will enjoy the completed new structure.

Kanza, 1915



Kanza, 1916

RUSS HALL