

Pittsburg State University

## Pittsburg State University Digital Commons

---

Communication and Theater Programs

Communication

---

6-22-1974

### Summer Theatre '74

Kansas State College of Pittsburg

Follow this and additional works at: <https://digitalcommons.pittstate.edu/theater-programs>



Part of the [Acting Commons](#)

---

#### Recommended Citation

Kansas State College of Pittsburg, "Summer Theatre '74" (1974). *Communication and Theater Programs*. 78.

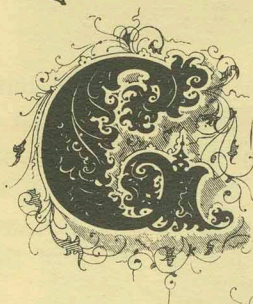
<https://digitalcommons.pittstate.edu/theater-programs/78>

This Book is brought to you for free and open access by the Communication at Pittsburg State University Digital Commons. It has been accepted for inclusion in Communication and Theater Programs by an authorized administrator of Pittsburg State University Digital Commons. For more information, please contact [digitalcommons@pittstate.edu](mailto:digitalcommons@pittstate.edu).



PLAYHOUSE ON BROADWAY

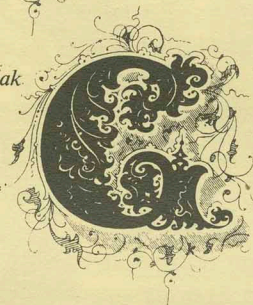
Cohan—Stewart—Pascal's



GEORGE

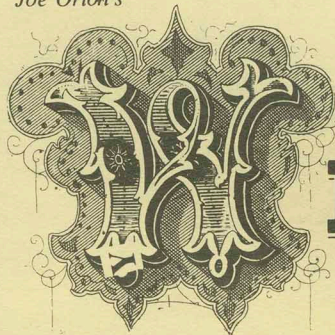


Schwartz—Tebellak

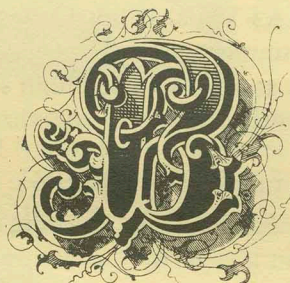


ODSPELL

Joe Orton's



HAT THE

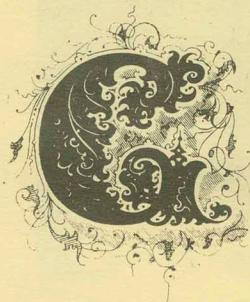


UTLER



AW

Children's Theatre



REENSLEEVEES



MAGIC

13th SEASON

KANSAS STATE COLLEGE OF PITTSBURG

MCMLXXIV



## PLAYHOUSE ON BROADWAY

(complimentary card)

KSCP Summer Theatre — Good at Any Performance

June 22 — July 24

Evenings at 8 p.m. Fri. Matinees at 2 p.m.

(No shows on Mondays)

"George M" "Godspell" "What the Butler Saw"

... and the children's show, "Greensleeves Magic"

KANSAS STATE COLLEGE OF PITTSBURG

STATE COLLEGE OF PITTSBURG

NT OF SPEECH AND THEATRE

## Summer Theatre '74

Thirteen years, and the 1974 PLAYHOUSE-ON-BROADWAY is bigger and better than ever! Each year, we at Kansas State College of Pittsburg strive to bring our audiences what they want most—the best in lively entertainment. This year is no exception: two musicals, a very "British" comedy and a wonderful children's theatre production, complimenting our air-conditioned, "Gay Nineties" atmosphere. AND you can see all of our shows in any seven day period! Come to the PLAYHOUSE and see what Southeast Kansans enjoy most in summer entertainment. The PLAYHOUSE is located on the northwest corner of the campus at the intersection of South Broadway and Cleveland streets.

*COME, BRING A FRIEND, AND END THE DAY WITH A PLAY!*

DID YOU KNOW THAT Kansas State College of Pittsburg offers up to 8 semester hours of undergraduate and graduate credit for summer theatre? Enrollment is open to undergraduate and graduate college students, to high school graduates, and for selected high school students who are admitted by special application and screening. Courses offered include:

SPEECH 333. EDUCATIONAL THEATRE PRODUCTION. 8 CREDIT HOURS. Participation in summer theatre for advanced students. Particular emphasis will be placed on the design and construction of multiple settings, acting in a repertory situation and summer theatre management.

SPEECH 843. EDUCATIONAL THEATRE ORGANIZATION. 3 GRADUATE CREDIT HOURS. A comprehensive examination of theatre arts elements and the way in which they function in various forms or organization within educational contexts.

DID YOU KNOW THAT Kansas State College of Pittsburg has a SUMMER THEATRE INSTITUTE? Open only to high school sophomores, juniors and seniors, a "model student" program offers college level instruction to selected high school students in the areas of acting, technical theatre and publicity. The high school student becomes an active PLAYHOUSE COMPANY MEMBER, lives on campus and participates in all areas of our summer theatre program.

DID YOU KNOW THAT Kansas State College of Pittsburg's Summer Theatre offers financial assistance and employment opportunities to PLAYHOUSE COMPANY MEMBERS? (Employment not available to participants of the SUMMER THEATRE INSTITUTE.)

STIPENDS. This summer we have a limited number of stipends for qualified students who join the PLAYHOUSE COMPANY as REGULAR MEMBERS. This stipend is credited toward room and board costs for the summer session.

STUDENT EMPLOYMENT. We also hire students for summer theatre employment through funds from the College Work Study Program. Student employees work 15-40 hours a week, depending upon grade-point average and class load. Students employed under the Work Study Program must qualify on basis of financial need.

CIVIL SERVICE. A limited number of seasonal Civil Service positions are also available, up to 40 hours per week. Most of these positions are supervisory in nature and demand full-time availability; i.e. House Manager, Stage Manager, Business Manager, Shop Foreman, Costumer.



## PLAYHOUSE ON BROADWAY OFFERING IN REPERTORY:

BROADWAY

Cohan—Stewart—Pascal's **GEORGE M**

Schwartz & Tebelak **GODSPELL**

Joe Orton's **WHAT THE BUTLER SAW**, and

Children's Theatre, **GREENSLEEVES MAGIC**

### THE DIRECTORS:



← Mr. Barry R. Bengtsen, Assistant Professor of Theatre, Director of the Summer Theatre Program. He will direct **GEORGE M** and design all summer theater productions. Since last summer's production of **GYPSY**, he directed the award winning production of **THE SERPENT** this past fall.

Dr. Cary Clasz, Associate Professor of Theatre. She will direct **GODSPELL**. Playgoers will remember the production last summer of **OKLAHOMA**, and the K.S.C.P. fall semester production of **CAROUSEL**. →



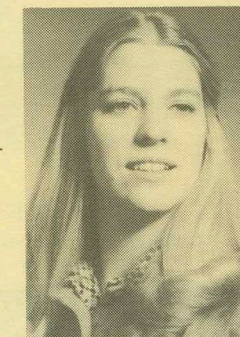
← Mr. Robert Gobetz, Assistant Professor of Theatre. He will direct **WHAT THE BUTLER SAW**. His most recent productions were last summer's **DIRTY WORK AT THE CROSSROADS** and **OF MICE AND MEN** this past spring.

Ms. Kathy Hill, director of the children's theatre production this summer. A native of Pittsburg, Kathy teaches school at Santa Fe Trail Jr. High in Olathe. She received her BA from KSCP and her MA in Theatre from K.U. She started the Olathe Community Theatre and her recent productions include **OKLAHOMA** and **NEVER TOO LATE**. →



← Ms. Nancy Beth Poteete received her MA at KSCP and her BA Ed. at Northwestern State College in Tahlequah, Okla. Nancy is our musical director for the summer. Audiences will remember her performance as Mama Rose in **GYPSY** last summer.

Ms. Cherie Fleischaker, Graduate Student in Theatre. She is our choreographer this summer for the musicals. A native of Joplin, Mo., Cherie completed her BFA in Theatre at Stephen's College in Columbia, Mo. →



**FOR INFORMATION about Summer Theatre Applications, the Summer Theatre Institute, and classes, write: Mr. Barry R. Bengtsen, Department of Speech and Theatre, Kansas State College of Pittsburg, Pittsburg, Kansas 66762.**

**COME, BRING A FRIEND, AND END THE DAY WITH A PLAY!**



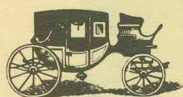


Goodness  
**seems impossible**

## SUMMER THEATRE SCHEDULE

| SUN            | MON  | TUE    | WED    | THU  | FRI   | SAT    |
|----------------|------|--------|--------|--|-------|--------|
| <b>J u n e</b> |      |        |        |  |       | GM 22  |
| GM 23          | D 24 | GOD 25 | GOD 26 | WBS 27   | CT 28 | WBS 29 |
| <b>J u l y</b> |      |        |        |  |       |        |
| GM 30          | D 1  | GM 2   | GOD 3  | GOD 4  | CT 5  | WBS 6  |
| WBS 7          | D 8  | GM 9   | GM 10  | GOD 11   | CT 12 | GOD 13 |
| WBS 14         | D 15 | WBS 16 | GM 17  | GM 18  | CT 19 | GOD 20 |
| GOD 21         | D 22 | WBS 23 | WBS 24 | G M—George M<br>WBS—What the Butler Saw<br>CT—Children's Theatre<br>GOD—Godspell |       |        |

Plenty of



FREE PARKING

### Ticket Information

Mail: Central Ticket Office  
 Student Union  
 KSCP  
 Pittsburg, Kansas 66762  
 Benefit and Party Prices Available  
 Season Tickets (4 Admissions—\$6.00)

Phone: Area Code 316  
 231-8950  
 Tickets Available At The Door  
 Prices: All Performances  
 Adults \$1.75  
 Children: .75  
 KSCP Students Free With ID  
 "Golden Age" .75

Curtain Promptly at 8:00 P.M.  
 Children's Matinee and Evening Performance  
 2:30 P.M. and 8:00 P.M.

