

Pittsburg State University

## Pittsburg State University Digital Commons

---

Communication and Theater Programs

Communication

---

6-1-1972

### Summer Theatre '72

Kansas State College of Pittsburg

Follow this and additional works at: <https://digitalcommons.pittstate.edu/theater-programs>



Part of the [Acting Commons](#)

---

#### Recommended Citation

Kansas State College of Pittsburg, "Summer Theatre '72" (1972). *Communication and Theater Programs*. 75.

<https://digitalcommons.pittstate.edu/theater-programs/75>

This Book is brought to you for free and open access by the Communication at Pittsburg State University Digital Commons. It has been accepted for inclusion in Communication and Theater Programs by an authorized administrator of Pittsburg State University Digital Commons. For more information, please contact [digitalcommons@pittstate.edu](mailto:digitalcommons@pittstate.edu).



PLAYHOUSE

ON

BROADWAY

Kansas State College

summer  
'72  
theatre

Of Pittsburg

YOU'RE A GOOD  
\*  
CHARLIE  
BROWN  
MAN

*Living  
de  
Life*

DIAL  
M

FOR  
MURDER

*Plaza  
Suite*



# KANSAS STATE COLLEGE OF PITTSBURG

## DEPARTMENT OF SPEECH AND THEATRE

Harold W. Loy, Ph.D., Chairman

### Summer Theatre '72

1972 PLAYHOUSE-ON-BROADWAY marks the eleventh season of Kansas State College Summer Theatre. Each of the eleven years has brought better summer theatre to Southeast Kansas. Last year, we moved indoors to air-conditioned comfort and a "Gay Nineties" atmosphere. This year, we are inaugurating yet another change—a change to a repertory schedule. What does this mean for you, our audience? It means that during any ten-day period throughout *THE ENTIRE SUMMER*, you may see *ANY ONE* or *ALL* of our popular shows! A Season Ticket will guarantee you "the best seat in the house." The *PLAYHOUSE* is located in Pittsburg at the northwest corner of the campus at the intersection of South Broadway and Cleveland Streets.

COME, BRING A FRIEND, AND END THE DAY WITH A PLAY!

*DID YOU KNOW THAT* Kansas State College offers 6-8 semester hours of undergraduate and graduate credit for summer theatre? Enrollment is open to undergraduate and graduate college students, to high school graduates, and to selected students of high school senior standing who are admitted by special application and screening. Courses offered include:

*SPEECH 133. Fundamental Theatre Techniques. 8 CREDIT HOURS.* Participation in a practical summer theatre program. Students will present theatre to the public, work on the construction and operating crews, handle business details under supervision, and generally participate in the operation of a continuing summer theatre. Includes preparation of a paper emphasizing one aspect of the student's work in summer theatre. May substitute for the regular session courses Introduction to Theatre: History 103 and Introduction to Theatre: Arts 104 or electives.

*SPEECH 333. Educational Theatre Production. 8 CREDIT HOURS.* Participation in summer theatre for advanced students. May substitute for the regular session courses Stagecraft 253 and Beginning Acting 254 or electives.

*SPEECH 633. Problems of the Educational Theatre. 6 GRADUATE CREDIT HOURS.* A seminar with concurrent laboratory participation in summer theatre for those in charge of educational theatre programs. Various problems in managing those programs, including educational objectives, personnel, finance, institutional traditions, and community relationships.

*DID YOU KNOW THAT* Kansas State College Summer Theatre offers financial assistance and employment opportunities to *PLAYHOUSE* Company Members?

*STIPENDS.* This summer we have a limited number of stipends for qualified students who join the *PLAYHOUSE* Company as *REGULAR MEMBERS*. The stipend is credited toward room and board costs for the summer session.

*STUDENT EMPLOYMENT.* We also hire students for summer theatre employment through funds from the college Work Study Program. Student employees work 15-40 hours a week, depending upon grade-point average and class load. Students employed under the Work Study Program must qualify on the basis of financial need.

*CIVIL SERVICE.* A limited number of civil service positions are also available, up to 40 hours per week. Most of these positions are supervisory in nature and demand full-time availability; i.e. House Manager, Stage Manager, Business Manager, Shop Foreman, Costumer.

*SUMMER PLAYHOUSE* student employees have the opportunity to take acting roles to the extent that their employment obligations permit.



KANSAS STATE COLLEGE OF PITTSBURG  
DEPARTMENT OF SPEECH AND THEATRE  
PLAYHOUSE-ON-BROADWAY  
OFFERING IN REPERTORY:

PLAZA SUITE, by Neil Simon

DIAL "M" FOR MURDER, by Frederick Knott

LIVIN' DE LIFE, by Ed Graczyk

YOU'RE A GOOD MAN CHARLIE BROWN, by Clark  
Gesner, based on the comic strip "PEANUTS" by  
Charles M. Schulz

THE DIRECTORS:

♦ Mr. Barry R. Bengtsen, Assistant Professor in Theatre, Director of the Summer Theatre Program. He will direct *PLAZA SUITE* and design all summer theatre productions. His last directing assignment was *MARAT/SADE*.

Dr. Cary Clasz, Associate Professor in Theatre. She will direct ♦ *CHARLIE BROWN*. Playgoers will remember her production last summer of *GLASS MENAGERIE*, and *ADAM THE CREATOR*, the K.S.C. fall production entry in the American College Theatre Festival.

♦ Mr. Robert Gobetz, Assistant Professor in Theatre. He will direct the chiller *DIAL "M" FOR MURDER*. His most recent productions were *TOBACCO ROAD* and *STREETCAR NAMED DESIRE* this past spring.

Mr. Charles Shipman, Graduate Student in Theatre. He will ♦ direct the children's production of *LIVIN' DE LIFE* based on the Tales of Uncle Remus. He also performed in last summer's *THE RED SHOES*.

♦ Miss Terry Carney, Graduate Student in Theatre. Miss Carney is our choreographer for the children's production of *LIVIN' DE LIFE*. She recently directed the children's play *THE LAND OF THE DRAGON* at Pittsburg's Washington Elementary School.

Miss Ruth Wallace, Graduate Student in Theatre. Miss Wallace ♦ is our Musical Director for *YOU'RE A GOOD MAN CHARLIE BROWN*. Summer Theatre audiences will remember her performance in *VISIT TO A SMALL PLANET* last summer.



COME, BRING A FRIEND, AND END THE DAY  
WITH A PLAY!

FOR INFORMATION about Summer Theatre Applications and classes, write: Mr. Barry R. Bengtsen, Department of Speech and Theatre, Kansas State College of Pittsburg, Pittsburg, Kansas 66762.



KANSAS STATE COLLEGE OF PITTSBURG  
PLAYHOUSE-ON-BROADWAY  
CORNER OF BROADWAY & CLEVELAND

SUMMER THEATRE (REPERTORY) SCHEDULE

SUN	MON	TUE	WED	THU	FRI	SAT
* J U N E *						24 P
25 P	26 P	27 D	28 D	29 D	30 L	
* J U L Y *						1 CB
2 CB	3 CB	4 CB	5 P	6 P	7 L	8 P
9 P	10 D	11 D	12 CB	13 CB	14 L	15 CB
16 CB	17 P	18 P	19 D	20 D	21 L	22 D
23 CB	24 P					

P = Plaza Suite  
D = Dial M For Murder  
CB = You're A Good Man Charlie Brown  
L = Livin' de Life  
Childrens Matinee and Evening Performance  
2:30 P.M. & 8:00 P.M.

Ticket Information  
Advance Reservations Suggested  
Mail: Central Ticket Office  
Student Union  
KSC  
Pittsburg, Kansas 66762

Phone: Area Code 316  
231-8950  
Tickets Available At The Door  
Group and Party Prices Available  
(Minimum 10)

Prices: All Performances  
Adults: \$1.50  
Children: \$.75  
KSC Students Free With Id.  
Season Tickets (4 Admissions) \$4.00

Curtain Promptly at 8:00 P.M.



PLAYHOUSE-ON-BROADWAY  
REPERTORY SUMMER THEATRE

*presents*

*Plaza Suite*

*by*

Neil Simon

*starring*

**JOHN  
COAKLEY**

and

**RUTH  
WALLACE**

*Directed by*

**BARRY R. BENGTSSEN**

---

ACT I

VISITOR FROM MAMARONECK

About four in the afternoon, mid-December

Karen Nash .....	Ruth Wallace
Sam Nash .....	John Coakley
Bellhop .....	Sam Umland
Waiter .....	Randy Hicks
Jean McCormack .....	Verna Page

ACT II

VISITOR FROM HOLLYWOOD

About three in the afternoon on a warm, sunny, spring day

Muriel Tate .....	Ruth Wallace
Jesse Kiplinger .....	John Coakley
Waiter .....	Randy Hicks

ACT III

VISITOR FROM FOREST HILLS

Three o'clock on a warm Saturday afternoon in Spring

Norma Hubley .....	Ruth Wallace
Roy Hubley .....	John Coakley
Borden Eisler .....	Randy Hicks
Mimsey Hubley .....	Verna Page

---

An Intermission of 15 minutes will precede Act II and Act III.  
The action takes place in Suite 719 of the Plaza Hotel in New York City.  
Produced by special arrangement with Samuel French, Inc.



PLAYHOUSE-ON-BROADWAY  
REPERTORY SUMMER THEATRE

*presents*

**DIAL "M" FOR MURDER**

by Frederick Knott

*with*

**BARBARA SMITH**

and

**GARY D. RONEY**

*Directed by*

**ROBERT W. GOBETZ**

---

CAST

Margot Wendice .....	Barbara Smith
Max Halliday .....	Alan Beckworth
Tony Wendice .....	Gary Roney
Captain Lesgate .....	John E. Gobetz
Inspector Hubbard .....	Richard Davison
Thompson .....	Sam Umland
Reporter .....	Jim Rinker

The action of the play takes place in the living room of the Wendice's apartment in London.

---

Act I

Scene one—Friday evening in September

Scene two—One hour later.

Act II

Scene one—Saturday evening.

Scene two—Later that night.

Scene three—Sunday morning.

Act III

A few months later. Early afternoon.

---

An Intermission of 15 minutes will precede Act II and Act III.

Produced by special arrangement with Dramatist's Play Service, Inc.



PLAYHOUSE-ON-BROADWAY  
REPERTORY SUMMER THEATRE

presents

*Livin' De Life*

by Ed Graczyk

starring

JOHN  
GOOD

JAN  
JACKSON

RANDY  
HICKS

Directed by

CHARLES SHIPMAN

Choreographed by

K. SNYDER WILSON

---

CHARACTERS

Brer Tarrypin	Mike Lane
Brer Coon	Bob Tindel
Brer Rabbit	John Good
Brer Fox	Jan Jackson
Brer Bear	Randy Hicks
Miss Meadows	Karen Gazaway
Aunt Mammy-Bammy	Nancy Beth Poteete
Sis Buzzard	Marthanda Beckworth
Miss Goose	Janice Carinder
Doc Crow	Larry Randolph
Sis Pig	Becky Hutchens
Brer Frog	Marion LeVieux
Brer Squirrel	Loretta Kokjohn
Miss Skunk	Bonnie Coleman

---

"Hoot an Holler Jamboree"

(Musical and Dance Numbers)

ACT I

Zip-a-dee-doo-dah	Brer Tarrypin
Mornin', Brer Rabbit!	Miss Meadows
De Creepy-Crawly Forest	Brer Coon, Doc Crow, Brer Squirrel, Sis Pig, Miss Skunk, Brer Frog
De Scrubba-Dubba Dancin' Fool	Sis Buzzard
Hopin' to Get Rid of the Mopin' Stomp	Brer Rabbit, Sis Buzzard

(Intermission of 15 Minutes)

ACT II

De Creepy Crawlers	Brer Frog, Miss Skunk, Miss Meadows, Doc Crow
Everybody's Got a Laffin' Place	Brer Rabbit, Brer Fox, Brer Bear, and All Characters
De Magical Cure	Aunt Mammy-Bammy
Livin' de Life	All Characters

An Intermission of 15 minutes will precede Act II and Act III.

Produced by special arrangement with The Anchorage Press, of Anchorage, Ky.



PLAYHOUSE-ON-BROADWAY  
REPERTORY SUMMER THEATRE

presents

# You're A Good Man, Charlie Brown

Based on the comic strip "Peanuts"

by Charles M. Schulz

Music, Lyrics and Adaptation

by Clark Gesner

Directed by

**DR. CARY CLASZ**

Musical Direction by

**RUTH WALLACE**

with

**BOB TINDEL as Charlie Brown**

and

Mary Dellasega as Lucy

Mike Bauer as Snoopy

Charlie Shipman as Schroeder

Paul Staat as Linus

Claire Childress as Patty

and in the Chorus

Janice Carinder as Frieda

Verna Page as Violet

Mary Swartz as Sally

Randy Hicks as Sherman

Tom Corporan as Pigpen

TIME—An average day in the life of Charlie Brown

## MUSICAL NUMBERS

### ACT I

You're a Good Man, Charlie Brown	Entire Company
Schroeder	Lucy, Schroeder
Snoopy	Snoopy, Charlie Brown
My Blanket and Me	Linus
The Kite	Charlie Brown
Dr. Lucy (The Doctor is In)	Lucy, Charlie Brown
Book Report	Charlie Brown, Lucy, Linus, Schroeder

### A 15 MINUTE INTERMISSION

### ACT II

The Red Baron	Snoopy
T. E. A. M. (The Baseball Game)	Entire Company
Glee Club Rehearsal	Entire Company
Little-Known Facts	Lucy, Linus, Charlie Brown
Suppertime	Snoopy
Happiness	Entire Company

Produced by arrangement with, and music and dialogue material furnished by Tams-Witmark Music Library, Inc.

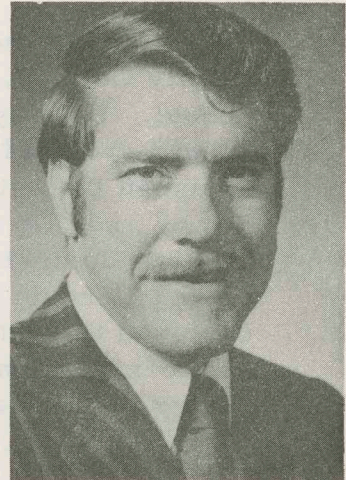




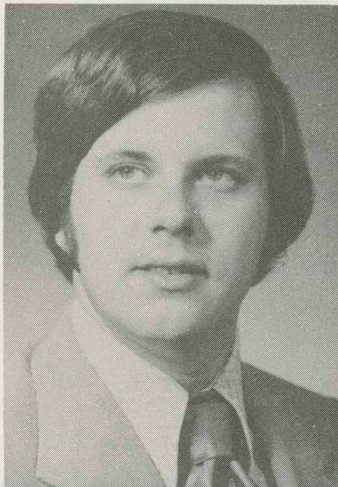
Ruth Wallace is no stranger to the KSC stage. She began her acting career in 1971 as Eleanor in "The Lion in Winter". Last summer she played the clever Cretin in "Visit to a Small Planet". In the fall she sang and acted in the Quartet in "Marat/Sade". This spring she played Ada in "Tobacco Road", considered by many to be her finest performance. Miss Wallace also performed in "Adam the Creator" and "Holy Mistake." For this season's Playhouse-on-Broadway Ruth is cast in "Plaza Suite" as Karen Nash, Muriel Tate and Norma Hubley respectively in each act.

RUTH WALLACE

John Coakley is an instructor of Drama at Oak Park High School in North Dansas City, holding a Masters in Education and one in Speech and Drama from the University of Missouri, Kansas City. John first appeared on the KSC stage last summer in the role of Bud Walters in "Anniversary Waltz". John has played such roles as Ben Burton in "Philadelphia, Here I Come", Lord Rivers in "Richard III", and Death in the medieval "Everyman". He has worked on technical theatre for several productions here and at UMKC's Repertory Theatre. John has directed such high school productions as "The Man Who Came to Dinner", "The Prime of Miss Jean Brodie", and "Guys and Dolls". He is cast this summer in "Plaza Suite".



JOHN COAKLEY



Gary Roney is a Speech and Drama Instructor at Joplin's Parkwood High School. He has his B.S. degree in Education from Missouri Southern College in 1970. Gary's acting experience includes such roles as Petruchio in "Taming of the Shrew", Marvin Hudgeons in "Dark of the Moon", Reverend Winemiller in "Summer and Smoke", the Preacher in "Finian's Rainbow", and Valere in Moliere's "The Miser". Gary has done technical work on many other shows and was awarded Outstanding Technical Achievement at MSC in 1969. Gary will play Tony Wendice in this summer's "Dial M for Murder".

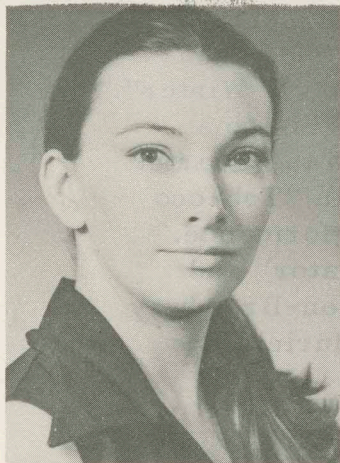
GARY RONEY

Barbara Smith received her B.S. degree in Speech and Drama from Northeastern State College at Talequah, Oklahoma. Miss Smith has held such leads as Raina in "Arms and the Man" and Blanche in "A Streetcar Named Desire". She has also performed in "The Solid Gold Cadillac" and other productions at the Little Theatre in Miami Oklahoma. She was awarded Best Actress at N. E. O. S. in 1968. Miss Smith is cast this summer as Margot Wendice in "Dial M for Murder".



BARBARA SMITH

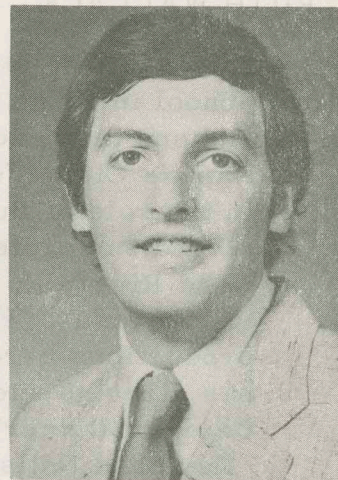




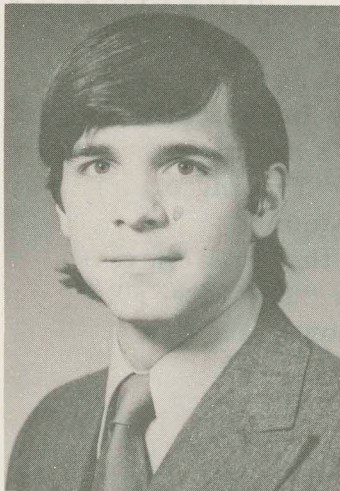
Jan Jackson received her B.S. in Education from Southwest Missouri State in 1967 in Springfield and her Masters from KSC in 1971. Miss Jackson is directing a large amount of the choreography in this summer's childrens show "Livin' de Life" and she is also playing the part of Brer Fox in the same production.

JAN JACKSON

Randy Hicks who recently transferred from Fort Scott Community College, enjoyed an active dramatic career in high school. He played Elwood P. Dowd in "Harvey" (for which he was awarded Best Actor in his senior year); Randy also designed the set for "Harvey". He also performed in "Our Town" and "Up the Down Staircase" and received top rating at State Contest. At Fort Scott Community College Randy played Norman Cornell in "Star Spangled Girl" and also designed the set for the show. This summer Randy is cast as Brer Bear in "Livin' de Life" and the Waiter and Border Eisler in "Plaza Suite".



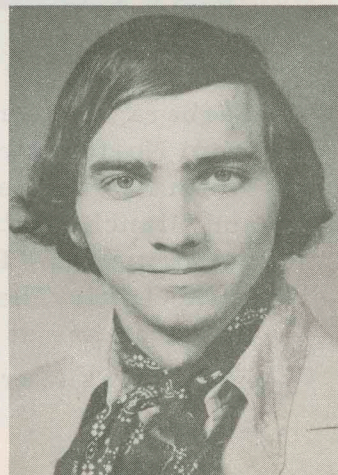
RANDY HICKS



John Good is a college student at KSC. His home is Liberal, Kansas. John was awarded Best Supporting Actor for his role in the high school musical "Oklahoma" and "1984". While attending Hutchinson Junior College he played in "Our Town". He carried a minor role in last spring's "A Streetcar Named Desire" at KSC. John will be seen as Brer Rabbit in this summer's "Livin' de Life".

JOHN GOOD

Bob Tindel, a graduate of Pittsburg High School, is currently attending KSC. In high school Bob played Rev. Parris in "The Crucible". He participated in the City Summer Theatre in musicals such as "How to Succeed in Business, Without Really Trying", "Lil' Abner", "Oklahoma", and "Oliver". Bob has been cast as Charlie Brown in this summer's "You're a Good Man, Charlie Brown".



BOB TINDEL



JANICE CARINDER comes from Caney, Kansas. A recent high school graduate, Janice played Alice in "Up the Down Staircase," Kate in "The Miracle Worker," and Alice in "You Can't Take It With You." Janice received top honors in high school for her achievements in poetry and dramatic interpretation. She will be seen this summer as Miss Goose in "Livin' de Life" and Frieda in "You're A Good Man, Charlie Brown."

CLAIRE CHILDRESS came to KSC in June, 1971, from DePauw University in Indiana, where she received her B. A. in Speech and Drama. In college Claire played Antigone in Sophocles' "Antigone." In last summer's Playhouse-on-Broadway she played Janice in "Anniversary Waltz." But it was during the recent academic year that Claire rendered excellent performances as Charlotte Corday in "Marat/Sade" and Blanche in "A Streetcar Named Desire." Currently she is cast as Patty in "You're A Good Man, Charlie Brown."

TOM CORPORON, a 1972 graduate of Pittsburg High School has appeared at the Lincoln Center Summer Theatre for three years performing in such shows as "Babe in Arms," "Little Mary Sunshine," "Bye, Bye Birdie," "Cinderella," and "The Boy Friend." At P. H. S. he starred as Scrouge in "The Christmas Carol," Action Boy in "West Side Story" and Ire Crane in "Mr. Crane of Sleepy Hollow." Tom portrays the part of Pigpen for this summer's production of "You're A Good Man, Charlie Brown."

RICHARD DAVISON has a long list of acting and technical credits to his name appearing in such shows as "Dark of the Moon" as Mr. Allen, "Tom Sawyer" as Muff Potter, and "Of Mice and Men" as Lennie for which he won an award. He's done technical work for "Bye, Bye Birdie," "Marat/Sade" to name just a few. As one of the actors in "Dial 'M' for Murder" he plays Inspector Hubbard.

MARY DELLASEGA has a long list of acting credits at KSC. She's appeared as the witch in "Wizard of Oz," Runner in "Warrior's Husband," Luce in "Knight of the Burning Pestle," Foux-Foux in "Marat/Sade," and Ma Lester in "Tobacco Road." For KSC's Playhouse-on-Broadway Mary has the role of Lucy in "You're A Good Man, Charlie Brown."

KAREN GAZAWAY's acting experience is limited to her part as the patient in "Marat/Sade." However, her knowledge of theatre goes further since she served as the Department of Speech and Theatre Secretary for many years. For KSC's Playhouse-on-Broadway Karen has the part of Miss Meadows in "Livin' de Life."



MIKE BAUER, recently graduated from Parkwood High School in Joplin, held roles in the following plays: "On Borrowed Time," "Camelot," "Romeo and Juliet" and "Hello Dolly." He was also on the set crew for "On Borrowed Time." This summer Mike is cast as Snoopy in "You're A Good Man, Charlie Brown."

ALAN BECKWORTH not only is acting this summer but also has the job of Stage Manager for "You're A Good Man, Charlie Brown" and House Manager for "Livin' de Life" and "Plaza Suite." Alan's acting experience includes roles in, "The Angels," "Not Enough Rope," and "South Pacific." His technical work includes stage crew chief for "A Company of Wayward Saints," sound chief for "Cactus Flower," and technical director for "Only an Orphan Girl." Alan is appearing this summer as Max in "Dial 'M' for Murder."

MARTHANDA BECKWORTH, a graduate of Northeastern State College in Tahlequah, Oklahoma, played Louka in "Arms and the Man," Mme. Dubonnet in "The Boy Friend," and Aunt Alicia in "Gigi." She also appeared in "A Streetcar Named Desire" and "The Cave Dwellers." Marthanda has also done publicity and property work on all the above named shows. She was named Best Supporting Actress at NEOS for Aunt Alicia in "Gigi." This summer she is playing Sis Buzzard in "Livin' de Life."

TERRY BINNS is a native of Webb City and has done extensive work in dance. He will be a student at KSC in the fall and is currently a student of dance under Miss Laura Perkins. This summer Terry is directing much of the choreography in "You're A Good Man, Charlie Brown."

ELIZABETH BURRIS has been involved in theatre for a number of years and her experience has not been limited to the United States. She has served on the Board of Directors of the Bellevue, Nebraska Little Theatre, worked with the Little Theatre at Torrejon Air Force Base in Madrid, Spain, and was with the Witchita Little Theatre for ten years and the Witchita Children's Theatre. Last summer she played the role of Grandma in the children's show "The Red Shoes." This summer Liz is working sound for "Livin' de Life" and make-up for "Plaza Suite."

LINDA BUSH is props mistress for the summer theatre company. Linda's acting roles include Gloria in "Wait Until Dark," the Owl and Typewriter in "Thurber Carnival," and Widow Carney in "Oliver." She acted in last summer's theatre as Debbie Walters in "Anniversary Waltz." Linda seems to have found her forte in technical theatre. She has served as props mistress in over twelve shows.



RON HEILMAN is heading costume work for Summer Repertory. Ron was recently graduated from KSC and holds an impressive bit of costuming credits: "The Lion in Winter," "Anniversary Waltz," "Tobacco Road," "Three Penny Opera," "A Streetcar Named Desire," "Adam the Creator," "Marat/Sade," "The Red Shoes," and many others. This summer he has designed and executed costumes for "Livin' de Life" and "Plaza Suite." Ron has acted in several plays that include "Born Yesterday," "Harvey," and "Tobacco Road."

REBECCA HUTCHENS last attended Neosho County Community College before she enrolled at KSC. At Neosho she appeared in "Teach Me How to Cry" as Anne. During high school at Thayer, Kansas, Becky played Aunt March in "Little Women," Eloise Baxter in "Autumn Story," Gladys in "Washington Never Slept Here" and Susan in "Of Poems, Youth, and Spring" winning the outstanding Thespian Award in 1971. This summer Becky has taken the role of Sis Pig in the children's show "Livin' de Life."

SILAS KLINGENSMITH is a graduate of KSC with a major in music. Silas is currently working on his masters degree at KSC. For the summer theatre program Silas will be pianist for "You're A Good Man, Charlie Brown."

BARBARA LANE majored in Speech-Drama Education at Culver-Stockton College in Canton, Missouri and recently received her B. A. degree. Her college acting roles include Molly in "Take Her, She's Mine," the Young Girl in "Summertree," and Cherie in "Bus Stop" a role which won her the Best Actress Award at Culver. Barbara has worked in lights and costumes in "More Stately Mansions," "King Lear," "Flower Drum Song," and "The Lion in Winter." Barbara directed "The Boor" her senior year. This summer she is the Playhouse Secretary.

MICHAEL LANE did his undergraduate work at Culver-Stockton College in Canton, Missouri, where he appeared as Albany in "King Lear," an Elder in "Flower Drum Song," Paul Bratter in "Barefoot in the Park," Mr. Zuss in "J. B." and the leading Young Man in "Summertree." Mike was master carpenter for "King Lear" and set designer and electrician for "Spoon River Anthology" and the other productions mentioned above. Mike was awarded Best Contribution to Theatre and Best Actor at Culver-Stockton in 1971. This summer he is master electrician for all four shows.



MARION LE VIEUX was graduated from the University of Dallas with a B. A. in Speech and Drama. As an undergraduate Marion was cast as the Young Queen in "Beckett," Kari in "Peer Gynt," Maria in "The Misunderstanding," and Dodo in "The Great Rage of Phillip Hotz." She has done costume design and construction for "Measure for Measure," "Waiting for Godot," and "Six Characters in Search of An Author." Marion directed Booth Tarkington's "Beauty and the Jacobin." This summer she is assistant to Ron Heilman in costume design and construction and she is playing the role of Brer Frog in "Livin' de Life."

VERNA PAGE is a 1972 graduate of Frontenac High School. While in high school Verna played the part of Helena Popova in "The Boor" which won her The Best Supporting Actress award at CNC speech contest. Other plays Verna has performed in include: "The Egg and I," "Rest Assured," and "The Marriage Proposal." While attending classes this summer at KSC Verna is also acting in "Plaza Suite" as Jean McCormick and Mimsy Hubley and in "You're A Good Man, Charlie Brown."

LARRY RANDOLPH is Playhouse-on-Broadway's scenic artist. He is currently finishing his M. A. degree at KSC in art. Larry has often worked as a special effects man for the KSC theatre working his talents on such shows as: "Marat/Sade," "Adam the Creator," "Visit to a Small Planet," and "The Red Shoes." Larry is making his first appearance on the KSC stage as Doc Crow in "Livin' de Life."

JIM RINKER received a B. A. degree in Speech and Drama from Southwestern State College. He has held leading roles such as Cyrano in "Cyrano de Bergerac," and the Impressario in "The Impressario." Jim also played Elyot in "Private Lives," and Ali Hakin in "Oklahoma." He has done stage work on "H. M. S. Pinafore" and "The King and I." In the 1972 summer theatre Jim plays the Reporter in "Dial 'M' for Murder."

JAMES L. SCOTT received his M. A. in Speech and Theatre at KSC this past year. Scotty's responsibilities in KSC theatre have been heavy to say the least. As an undergraduate, he played Norman Cornell in "Star Spangled Girl" and Starbuck in "The Rainmaker." Last summer he was Technical Director for the first Playhouse-on-Broadway; and during the past year he was stage manager for all KSC major productions. For the past five years he has been repeatedly assigned as master electrician. Scotty has directed "Far from the Valley of the Green" and "The Wish." Currently, Scotty is the master carpenter for the summer theatre and is responsible for all set construction.



CHARLES SHIPMAN, the Director of "Livin' de Life," received his M. A. this year from KSC. His acting experience holds a wide variety, including such roles as the Burgomaster in "The Red Shoes," Mr. Gaus in "Anniversary Waltz," and the Actor in "Holy Mistake." Charles previously directed "Bringing It All Back Home." In the summer theatre he also plays Schroeder in "You're A Good Man, Charlie Brown."

PAUL STAAT is a 1972 graduate of Parkwood High School in Joplin, Missouri. While in high school Paul played in "Camelot," "Romeo and Juliet," and as Cornelious Hackle in "Hello Dolly," a role which won him the Best Supporting Actor award. Paul also did technical work on those three shows as part of the set crew. This summer Paul is playing the role of Linus in "You're A Good Man, Charlie Brown."

KATHY SPIGARELLI, a sophomore at KSC, has just begun work in theatrical productions. She is currently working on costumes for the four shows of the 1972 Playhouse-on-Broadway.

MARY SWARTZ is a student at Girard, Kansas, where she's acted as June in "The Man Who Came to Dinner." Mary also directed "The Cave Dwellers" at Girard High School. For this summer's Playhouse-on-Broadway Mary has the role of Sally in "You're A Good Man, Charlie Brown."

KERRY TREMAIN comes to KSC from Coffeyville Junior College and William Jewell College in Liberty, Missouri. Kerry first worked with KSC theatre in last summer's Playhouse-on-Broadway. He worked as a stage technician in junior college for Shakespeare's "Hamlet" and "The Second Shepherd's Play." Kerry was cast as Nels in "The Red Shoes" and did extensive technical and scenery work on all of last summer's productions. Currently he is assistant to James Scott in set design and construction for all four productions.

K. SNYDER WILSON is one of the stage managers for Playhouse-on-Broadway and is also the choreographer for "Livin'de Life." She has done technical work on "The Lion in Winter," "Don't Drink the Water," "Inherit the Wind," and was choreographer for last summer's children's show, "The Red Shoes." Miss Wilson has had acting roles in "The House of Bernarda Alba" as Bernarda Alba, "Mary, Mary" as Tiffany Richards, and "Born Yesterday" as Billie Dawn. She has also directed, "Picnic," "Harvey," and "Zoo Story."



SAM UMLAND is a graduate of Humboldt High School and is taking classes this summer at KSC. Sam has worked on the set crews for all of the shows for this summer's Playhouse-on-Broadway. Along with that, Sam is cast as the Bellhop in "Plaza Suite" and as Brer Tarrypin in the children's play "Livin' de Life."

NANCY BETH POTEETE received her B. A. in Education this spring from Northeastern State College in Tahlequah, Oklahoma. Nancy played such roles as Marion Hollander in "Don't Drink the Water" and Hecuba in "Tiger at the Gate." Her technical production experience ranges from lighting crew and publicity manager to stage manager and assistant director. Nancy was awarded Best Actress at Northeastern State in 1970. She is cast as Aunt Mammy Bammy in "Livin' de Life."

DOUG JACKSON is a graduate of Southern Illinois University at Carbondale. He is currently a graduate student in Theatre at KSC. Doug will be filling the role of Brer Bear in "Livin' de Life." He will replace Randy Hicks.

BONNIE COLEMAN a native of Baxter Springs, Kansas attended KSC for two years. She is making her first appearance as Miss Skunk in "Livin' de Life" for the summer theatre program.

LORETTA KOKJOHN, newly assigned as a graduate assistant in Speech-Theatre, comes from St. Mary of the Plains College in Dodge City. She performed in several plays in college and makes her first appearance on the KSC stage as Brer Squirrel in "Livin' de Life."

JOHN GOBETZ is a junior at KSC majoring in Speech with a theatre emphasis and a minor in music. John did a great deal of acting in high school at College High. Since coming to KSC John played Sam the T. V. man in "Anniversary Waltz," the Shiek in "Don't Drink the Water," and sang in the Quartet in "Marat/Sade." This summer John plays Captain Lesgate in "Dial 'M' for Murder."

Departmental Secretary .....	Angie Snawder
Concessions .....	Terry Binns
Box Office .....	Mrs. Eleanor Florio
Usher Coordinators .....	Mrs. Maxime Bebb
	Mrs. Harold Loy
	Mrs. Jack Hoffman
	Mrs. John Shaw
Usherettes .....	Girl Scout Troups No. 11 and No. 9
Photographer .....	Larry Long
Running Crews .....	Speech 133, 333, 633

FIRE NOTICE: The exit indicated by a red light and sign nearest to the seat you occupy is the shortest route to the street. In the event of fire or other emergency please do not run--WALK TO THE EXIT. Thoughtless persons annoy patrons and endanger the safety of others by lighting matches or smoking in prohibited areas during the performance and intermissions.