

Pittsburg State University

Pittsburg State University Digital Commons

Carson J. Robison Music Scores

Carson J. Robison, the Cowboy Radio Singer,
1903-1988

2015-01-01

Man Trouble

Carson Robison

Follow this and additional works at: <https://digitalcommons.pittstate.edu/cjrms>

Recommended Citation

Robison, Carson, "Man Trouble" (2015). *Carson J. Robison Music Scores*. 63.
<https://digitalcommons.pittstate.edu/cjrms/63>

This Sheet Music is brought to you for free and open access by the Carson J. Robison, the Cowboy Radio Singer, 1903-1988 at Pittsburg State University Digital Commons. It has been accepted for inclusion in Carson J. Robison Music Scores by an authorized administrator of Pittsburg State University Digital Commons. For more information, please contact digitalcommons@pittstate.edu.

"MAN TROUBLE.

(Vocal accomp.) (Key of F)

by Carson J. Robison.
copyright 1934.

Orch. By
Sven von Hallberg

This orchestration contains the following parts:—

1st VIOLINS. [A] + [B] (2 parts)
" " [C]

1st Sax (Eb Alto)

2nd Sax (Bb Tenor)

3rd Sax (Eb Alto)

4th Sax (Eb Bar.)

I Trumpet.

II "

III "

I Trombone

II "

BASS

PIANO

DRUMS

GUITAR

CONDUCTOR (Vocal Lead + Condensed Orch.)

VOCAL PART. (2 verses, 2 choruses, Patter)

The parts are arranged progressively.
Playable with strings, saxes + rhythm
(With out brass)

Can be used with small combinations.

If lighter effect is desired drop out
these parts: [I] 2nd Trombone.

[2] 4th sax. [3] 3rd Trpt.

Carson J. Robison,

48 West 48th St.
N.Y.

VIOLINS.

A + B

"MAN TROUBLE"

Carson J. Robison.

VAMP

VERSE

CHORUS

1. To Patter To Verse 2. FINE

PATTER

(Voice)

Pizz (82)
pp



D.S. f. To Chorus.



Richard Von Hallberg
V 381
LOCAL 502
COPYRIGHT 1925



VIOLINS

A & B

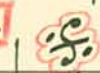
Carson J. Robison

"MAN TROUBLE" (Vocal accomp.)

VAMP

VERSE

CHORUS



To Patter

To Verse

FINE

PATTER

(a2) (voice)

Pizz
PP

Arco.



D.S. *f* To Chorus.



Richard Von Hallberg
V 381
LOCAL 602
COPYRIGHT 1968



VIOLINS.

C

"MAN TROUBLE" (vocal accomp.)

Carson J. Robison.

Orch. By
Sven von Hallberg

VAMP

VERSE

CHORUS.

1. To Patter


To Verse

2. FINE

PATTER

Pizz. pp

frc.

D.S. 
to Chorus



Richard Von Hallberg
V 381
LOCAL 502
COPYRIGHT 1959

Ist. Sax.
(Eb Alto)

"MAN TROUBLE" ¹¹ (vocal accomp.)

Carson J. Robison.

Orch. By
Sven von Hallberg

VAMP

VERSE

CHORUS

PATTER

1. To patter

To verse

2. FINE

D.S. *f.* to Chorus.



Richard Von Hallberg
V 381
LOCAL 802
COPYRIGHT 1985

2nd Sax.
(Bb Tenor)

"MAN TROUBLE" (vocal accomp.)

Carson J. Robison.

Orch. By
Sven von Hallberg

VAMP

VERSE

CHORUS

FINE

PATTER

D.S. *f* to Chorus.



3rd. SAX
(Eb Alto)

Carson J. Robison.

"MAN TROUBLE" (vocal accomp.)

Orch. By
Sven von Hallberg

VAMP.

VERSE

CHORUS.

1. To Patter

To Verse

2. FINE.

PATTER.

stacc. pp

Unison. soli

mp

mf soli

D.S. f.
To Chorus.



Richard Von Hallberg
V 381
LOCAL 902
COPYRIGHT 1935

4th Sax.
(Eb Bar.)

"MAN TROUBLE" (vocal accomp.)

Carson J. Robison.

Orch. By
Sven von Hallberg

VAMP

VERSE

CHORUS.

To Patter

To Verse

FINE

PATTER

stacc. pp

unis. soli.

mf (soli)

D.S. *f* to chorus.



Richard V. Hallberg
V301
LOCAL 502
COPYRIGHT 1965

Ist. Trpt.

Carson J. Robison.

"MAN TROUBLE" (vocal accomp.)

Orch. By
Sven von Hallberg

VAMP *muted.*

VERSE

sol

pp

CHORUS *sol*

p

sol

4

To Patter *To Verse*

2.

PATTER *stacc.*

ppp

sol *mf*

D.S. f. to Chorus.



Richard von Hallberg
V 381
LOCAL 102
COPYRIGHT 1939

2nd. Trpt.

Carson J. Robison.

"MAN TROUBLE" (vocal accomp).

Orch. By
Sven von Hallberg

VAMP muted

VERSE

Soli

pp #6

CHORUS. *f*

Soli-mf

p

Soli

stacc pp

PATTER

Soli

1. *To Patter* *To Verse* 2. **FINE**

D.S. f to Chorus.



3rd. Trpt.

Carson J. Robison

"MAN TROUBLE" (vocal/ accomp.)

Orch. By
Sven von Hallberg

VAMP muted. *pp*

Soli. *pp*

VERSE *voice.*

CHORUS *f.* *Soli*

Soli

PATTER

Soli. *mf*

Soli. *mf*

FINE

D.S. *f.* to Chorus.

To Patter *To Verse*



Richard von Hallberg
V381
LOCAL 002
COPYRIGHT 1969

Ist.
Trombone.

Carson J. Robison.

"MAN TROUBLE" (vocal accomp.)

Orch. By
Sven von Hallberg

VAMP muted. *mp*

VERSE 1 3

pp

CHORUS. *Soli. mf*

2 4

1. *To Patter* *To Verse* **FINE**

PATTER *stacc. pp.*

Soli. mf *p* **D.S. f. to Chorus.**



Ind.
Trombone.

Carson J. Robison.

"MAN TROUBLE" (Vocal/ accomp.)

Orch. By
Sven von Hallberg

VAMP muted *mp*

VERSE *voice* 1 2 3

CHORUS. *p* *Soli. mp* 2

mp *pp* 4

PATTER *mp* *stacc. pp.* 1 *To Patter* *To Verse* 2. **FINE.**

pp

D.S. *f.* to Chorus.



Richard Von Hallberg
V 381
LOCAL 502
COPYRIGHT 1959

BASS.

Carson J. Robison

"MAN TROUBLE" (vocal accomp.)

Orch. By
Sven von Hallberg

VAMP

VERSE

CHORUS

FINE

PATTER

D.S. f to Chorus.



Richard von Hallberg
V 381
LOCAL 602
COPYRIGHT 1965

PIANO.

Carson J. Robison.

"MAN TROUBLE" (vocal accomp.)

Orch. By
Sven von Hallberg

(VOICE)

VAMP

VERSE

CHORUS.

5.

This is a handwritten musical score for the song "Man Trouble". It is written for piano accompaniment and includes a vocal line. The score is organized into four systems, each with a vocal staff and a piano accompaniment section (treble and bass staves). The first system includes a "VAMP" section and a "VERSE" section. The second and third systems continue the piano accompaniment. The fourth system includes a "CHORUS" section, marked with a circled "5." and a key signature change to one sharp (F#). The notation includes various musical symbols such as notes, rests, bar lines, and dynamic markings like accents and slurs.

Handwritten musical score for piano and voice, consisting of four systems of staves. The notation includes treble and bass clefs, various note values (quarter, eighth, sixteenth notes), rests, and dynamic markings (accents, slurs). The key signature changes from one flat (B-flat) to one sharp (F-sharp) across the systems. The final system includes performance directions: "1. To PATTEN", "To VERSE", and "2. FINE".

PATTER

D.S. f. to Chorus.



DRUMS.

"MAN TROUBLE" (vocal accomp)

Carson J. Robison

Orch. By
Sven von Hallberg

VAMP (lightly)

VERSE

CHORUS

FINE

PATTER

D.S. to Chorus.

cymb.

pp

mp (cymb.)

(2) (3) (4)

(cymb.)

1. To Patter To Verse

B.D. with stick.

stacc.

(2) (3) (4)

(B.D. with stick)

(2) (3) (4)



Richard Von Hallberg
V 381
LOCAL 002
COPYRIGHT 1956

Guitar.

Carson. J. Robison.

"MAN TROUBLE" (vocal accomp.)

Orch. By
Sven von Hallberg

VAMP

VERSE

CHORUS

PATTER

FINE.

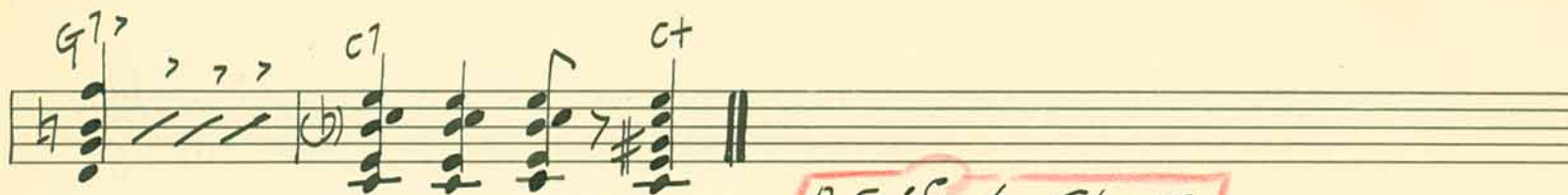
stacc. pp.

To Patter

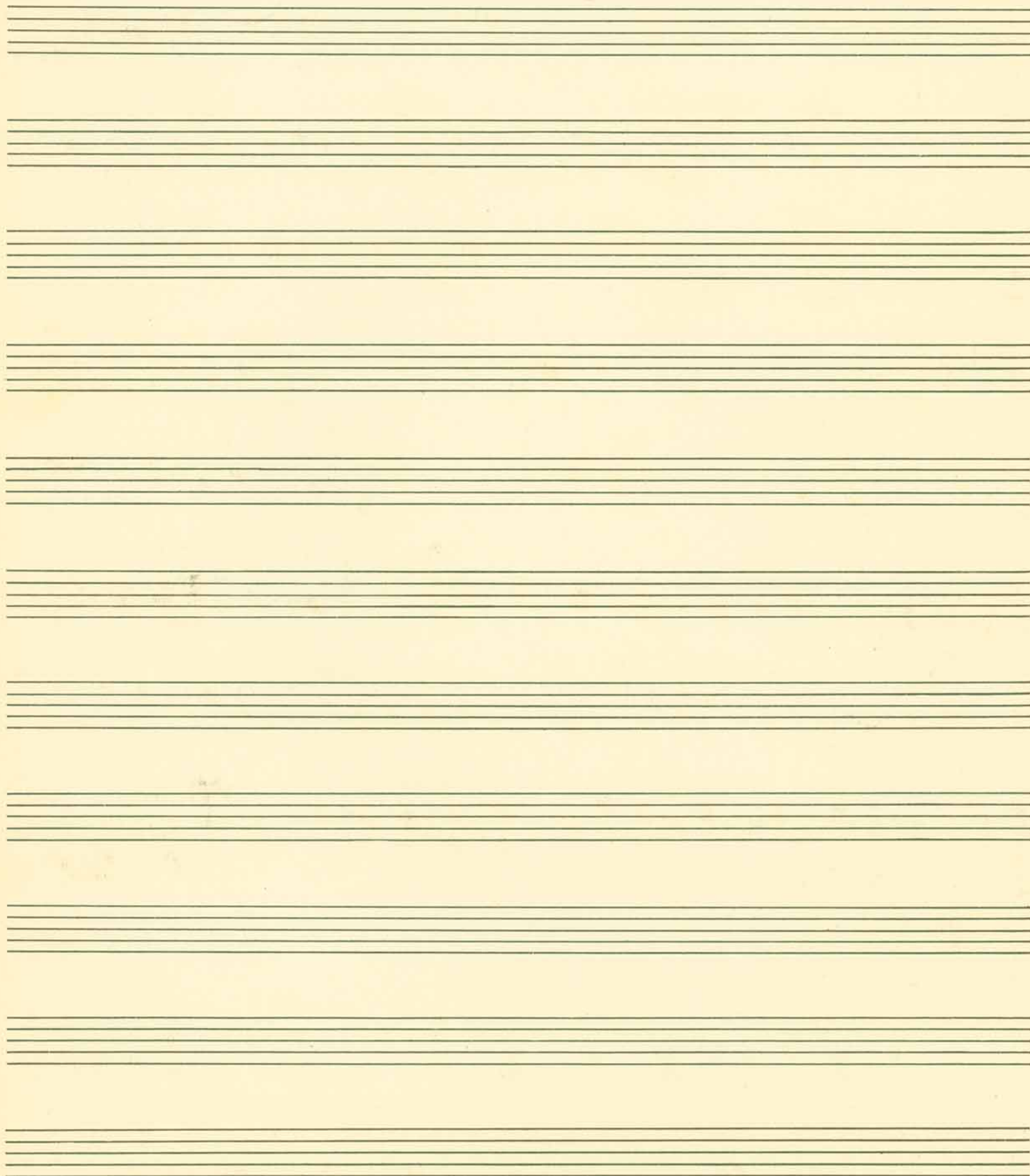
To Verse



Richard V. Hallberg
V 381
LOCAL 602
COPYRIGHT 1965



D.S. f. to Chorus.



CONDUCTOR

"MAN TROUBLE" (vocal accomp.)

Carson J. Robison

Orch. By
Sven von Hallberg

VERSE

Handwritten musical score for the Verse section. The score is written for piano and includes parts for saxophones and trumpets. The key signature is one flat (Bb) and the time signature is 4/4. The score consists of four systems of staves. The first system shows the piano introduction and the entry of the saxophones. The second system features a trumpet solo. The third system includes a saxophone glissando and a trumpet solo. The fourth system continues the piano accompaniment and saxophone parts. Various musical notations such as slurs, accents, and dynamic markings are present throughout the score.

CHORUS.

Handwritten musical score for the Chorus section. The score is written for piano and includes parts for saxophones. The key signature is one flat (Bb) and the time signature is 4/4. The score consists of two systems of staves. The first system shows the piano introduction and the entry of the saxophones. The second system continues the piano accompaniment and saxophone parts. Various musical notations such as slurs, accents, and dynamic markings are present throughout the score.

(Saxes & Trpts)
(Bass and Bar. Sax)

Saxes.
(Tutti)pp

(Saxes & Trpts.)
(Bass Bar.)

1. To Patter. To Verse 2. FINE

PATTER.

stacc. pp.
(Tutti)



No 2 - 10 Lines
1595 B'way. N.Y.



Richard Van Hallberg
V 331

LOCAL 502

Handwritten musical score for the first system. The top staff contains a melody with eighth and sixteenth notes, including a triplet. The bottom staff provides a harmonic accompaniment with chords and single notes. A handwritten annotation "saxes. unison." with a circled "3" is written above the bottom staff in the fourth measure.

Handwritten musical score for the second system. The top staff continues the melody. The bottom staff continues the accompaniment, starting with a bass clef and a key signature of one flat. A handwritten annotation "(b)" is written below the first measure of the bottom staff.

Handwritten musical score for the third system. The top staff continues the melody. The bottom staff continues the accompaniment. A handwritten annotation "saxes. mf" is written above the bottom staff in the fourth measure.

Handwritten musical score for the fourth system. The top staff contains a few notes before a double bar line. The bottom staff contains a few notes before a double bar line. A handwritten annotation "D.S. to Chorus" is written in a pink box between the staves.

Original Routine:

1st. Verse - Chorus.

2nd Verse - Patter - Chorus - Fine.

This arrgt. is purposely simple, with very few figures, light melody, and is chiefly background - in order not to conflict with the somewhat difficult lyrics.

VAMP

VERSE



I got a lov-in' man in
I got a maj-or in the



Fris-co — Got a noth-er one in Car-o-line -, and there's a cow-boy in Mon-arm-y — Got a cap-tain on the brin-y deep, now I've got a



-ta-na — I've nev-er got-ten off my mind, — When I came to this big big Ma-rine that's certin'ly mess-in' up my sleep, — Oh I nev-er used to



cit-y — Oh, I made my-self a sol-emn vow, And I swore I'd leave the wor-ry But it's get-tin' might-y plain to see, That I bet-ter turn my



men a-lone, But I got a noth-er sweet-ie now — I got MAN damp-er down, — Dis-ast-er's catch-in' up with me — I got MAN



TRoub-LE — MAN TROUB-LE — Got a lot o' wor-ries in my heart, I'm TRoub-LE — MAN TROUB-LE — Used to think that life was just a song, But



Won-drin how to keep my men a-part, I got MAN TROUB-LE — MAN now, I guess I sung one tune too long, I got MAN TROUB-LE — MAN

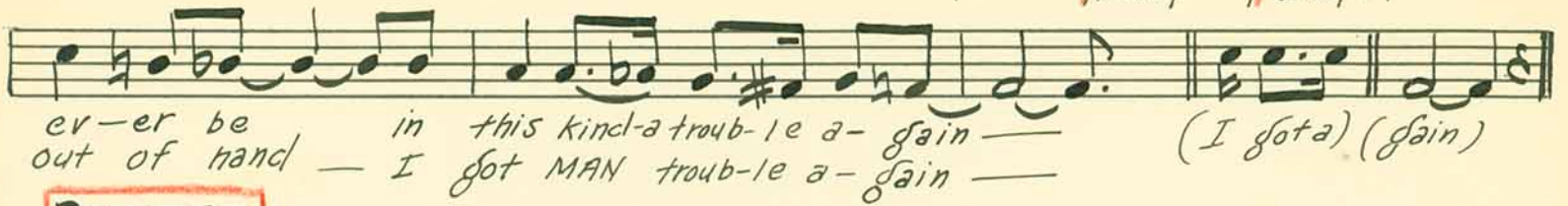


TRoub-LE — Talk a-bout your weath-er on the storm-y sea, If they TRoub-LE — Start-ed spec-u-la-tions with just one man, And



ev-er get to-geth-er it's plain to see, There's a quest-ion as to wheth-er I'll then my op-er-a-tions be-gan to ex-pand And now the sit-u-a-tion is.

1 To Patter, To Verse 2. FINE



PATTER



f. D.S. to Chorus



Richard Von Hallberg
V381
LOCAL 502
COPYRIGHT 1966



No 2 - 10 Lines
1595 B'way. N.Y.

MAN TROUBLE

[PATTER]

I GOT A BROK--ER DOWN IN WALL STREET A
FARM---ER IN THE WEST A COL--ONEL IN KEN---TUCK---Y THAT
WEARS A FAN---CY VEST A BANK---ER IN CHI---CA---GO THAT
I LIKE BEST I GOT MAN TROU--BLE GOT A
TEN--OR IN THE OP--'RA A CROON--ER ON THE AIR A
GIG---O---LO ON BROADWAY WITH PAT--ENT LEATH--ER HAIR A
DOC---TOR AND A LAW--YER THAT I CAN SPARE I GOT
back to 2nd chorus
MAN TROU--BLE

MAN TROUBLE

A handwritten musical score for the piece "MAN TROUBLE". The score is written on ten staves, with the first staff beginning with a treble clef and a key signature of one sharp (F#). The notation includes various musical symbols such as notes, rests, and accidentals. The score is written in a cursive, handwritten style. The first staff begins with a treble clef and a key signature of one sharp (F#). The notation includes various musical symbols such as notes, rests, and accidentals. The score is written in a cursive, handwritten style. The first staff begins with a treble clef and a key signature of one sharp (F#). The notation includes various musical symbols such as notes, rests, and accidentals. The score is written in a cursive, handwritten style.

MAN TROUBLE

I GOT A LOVIN' MAN IN FRISCO
GOT ANOTHER ONE IN CAROLINE
AND THERE'S A COWBOY IN MONTANA
THAT I'VE NEVER GOTTEN OFF MY MIND
WHEN I COME TO THIS BIG CITY
I MADE MYSELF A SOLEMN VOW
AND I SWORE I'D LEAVE THE MEN ALOME
BUT I GOT ANOTHER SWEETIE NOW

CHORUS

I GOT MAN TROUBLE
MAN - TROUBLE
GOT A LOT O' WORRIES IN MY HEART
WOND'RING HOW TO KEEP MY MEN APART
I GOT MAN TROUBLE
MAN - TROUBLE
TALK ABOUT YOUR WEATHER ON THE STORMY SEA
IF THEY EVER GET TOGETHER ITS PLAIN TO SEE
THERE'S A QUESTION AS TO WHETHER I'LL EVER BE
IN THIS KINDA TROUBLE AGAIN

PATTER

~~XXXX~~

GOT A BROKER DOWN IN WALL STREET
A FARMER IN THE WEST
A COL'NEL IN KENTUCKY
WHO WEARS A FANCY VEST
A BANKER IN CHICAGO
THAT I LIKE BEST
I GOT MAN - TROUBLE
GOT A TENOR IN THE OP'RA
FOR WHOM I REALLY CARE
A JOCKEY DOWN IN TULSA
WITH PATENT LEATHER HAIR
A DOCTOR AND A LAWYER
THAT I CAN SPARE
I GOT MAN TROUBLE

LAST HALF CHORUS

I GOT MAN - TROUBLE
MAN - TROUBLE
STARTED SPECULATION WITH JUST ONE MAN
AND THEN MY OPERATIONS BEGAN TO EXPAND
AND NOW THE SITUATION IS OUT OF HAND
AND I GOT MAN TROUBLE AGAIN

MAN TROUBLE

2nd. Verse

GOT A MAJOR IN THE ARMY
GOT A CAPTAIN ON THE BRINY DEEP
AND NOW I'VE GOT A BIG MARINE
THATS CERTAINLY MESSIN' UP MY SLEEP
OH I NEVER USED TO WORRY
BUT ITS GETTIN' MIGHTY PLAIN TO SEE
THAT I BETTER TURN MY DAMPER DOWN
DISASTER'S CATCHIN' UP WITH ME

Patter

GOT A BROKER DOWN IN WALL STREET
A FARMER IN THE WEST
A COLONEL IN KENTUCKY
THAT WEARS A FANCY VEST
A ~~GANGSTER~~ IN CHICAGO
THAT I LIKE BEST *Banker*
I GOT MAN TROUBLE
GOT A TENOR IN THE OPERA
A CRONER ON THE AIR
A GIGGOLO ON BROADWAY
WITH PATENT LEATHER HAIR
A DOCTOR AND A LAWYER THAT I CAN SPARE
I GOT MAN TROUBLE

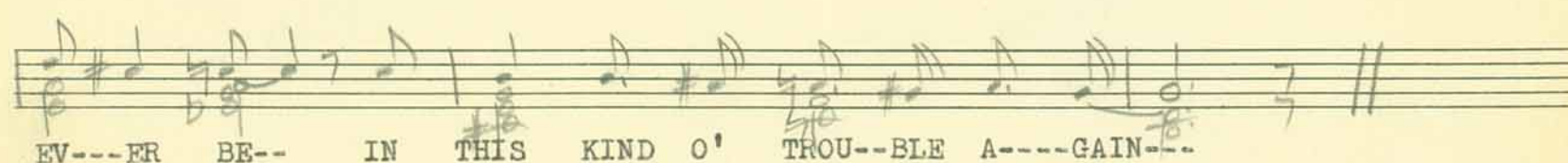
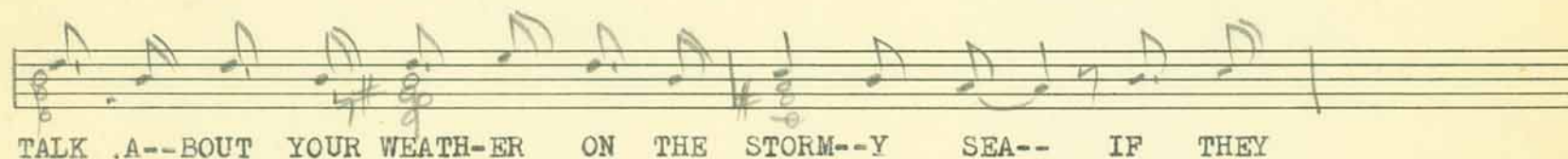
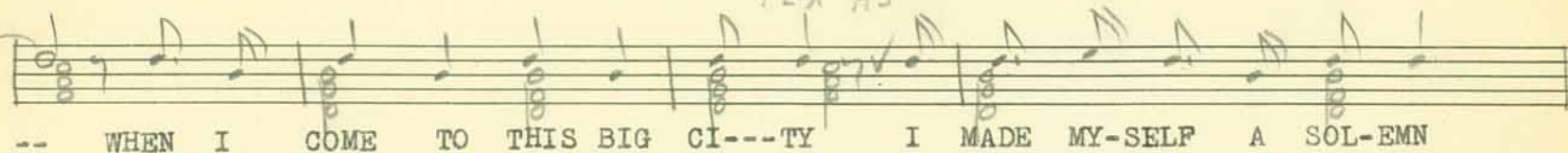
Chorus-

I GOT MAN TROUBLE
~~TRONKLEKX~~ MAN TROUBLE
I USED TO THINK THAT LIFE WAS JUST A SONG
BUT NOW I GUESS I SUNG ONE TUNE TOO LONG
I GOT MAN TROUBLE
MAN TROUBLE
STARTED ~~E~~ SPECULATIONS WITH JUST ONE MAN
AND THEN MY OPERATIONS BEGAN TO EXPAND
AND NOW THE SITUATION IS OUT OF HAND
AND I GOT MAN TROUBLE AGAIN

MAN TROUBLE

Words & Music By
Carson J. Robison

Zora *J*



ZORA LAYMAN

"MAN TROUBLE"

Carson J. Robison.

VERSE

I got a lov-in' man in Fris-co Got an-oth-er one in Car-o-

line And there's a cow-boy in Man-ha-ve ner-er got-ten off my mind

When I came to this big cit-y Oh I made my-self a sal-ern

Now And I swore I'd leave the men a-lone but I got a- noth-er sweetie now

Handwritten musical score for guitar and voice. The first system includes a guitar part with chords and a vocal line. The chords are: C7, C^{aug}, F, F7, Bb7, and Bbm. The vocal line includes the lyrics: "I got MAN TROUB-LE MAN TROUB-LE". A red box highlights "2nd Time to Patter." and another red box highlights "CHORUS".

Handwritten musical score for guitar and voice. The second system includes a guitar part with chords and a vocal line. The chords are: F, F# dim., Gm, C7, F, D7, G7, C7, and C^{aug}. The vocal line includes the lyrics: "Got a lot of wor-ries in my heart - won-din how to keep my men a-part, I got".

Handwritten musical score for guitar and voice. The third system includes a guitar part with chords and a vocal line. The chords are: F, F7, Bb7, Bbm, F, and F# dim. The vocal line includes the lyrics: "MAN TROUB-LE MAN TROUB-LE Talk a-bout your weather on the".

Handwritten musical score for guitar and voice. The fourth system includes a guitar part with chords and a vocal line. The chords are: Gm, C7, F, F# dim., Gm, C7, F, and D7. The vocal line includes the lyrics: "storm-y sea If they ever get to-gether its plain to see There's a question as to whether I'll".

er-er be in this kind-a trouble a-gain

To 2nd. Verse.

Chords: Gm, Bbm, G7, C7, F

PATTER

Got a broker down in Wall Street, A farm-er in the west, A colo-nel in Ken-tuck-y that

Chords: C7, F, F7, Bb

Wear's a fanc-y vest, A bank-er in chic-a-go that I like best I got MAN

Chords: Bbm, F, Eb, D7, Gm, D7, G7

troub-le - Got a ten-or in the op'-ra, a croon-er on the air, A sig-o-lo on Broadway with

Chords: C7, F, F7, Bb

Handwritten musical score for guitar and voice. The first system includes guitar chords: Bbm, F, Eb, D7, and Gm. The lyrics are: "pat-ent leath-er hair, A doct-or and a law-yer that I can spare, I got".

Handwritten musical score for guitar and voice. The second system includes guitar chords: G7, C7, and Aug. The lyrics are: "MAN TROU-BLE — I got". A red box contains the instruction: "D.S. to chorus.".

Three empty systems of musical staves, each consisting of a treble and bass staff joined by a brace.