

Pittsburg State University

## Pittsburg State University Digital Commons

---

Carson J. Robison Music Scores

Carson J. Robison, the Cowboy Radio Singer,  
1903-1988

---

2015-01-01

### Long Long Ways From Home

Carson Robison

Follow this and additional works at: <https://digitalcommons.pittstate.edu/cjrms>

---

#### Recommended Citation

Robison, Carson, "Long Long Ways From Home" (2015). *Carson J. Robison Music Scores*. 62.  
<https://digitalcommons.pittstate.edu/cjrms/62>

This Sheet Music is brought to you for free and open access by the Carson J. Robison, the Cowboy Radio Singer, 1903-1988 at Pittsburg State University Digital Commons. It has been accepted for inclusion in Carson J. Robison Music Scores by an authorized administrator of Pittsburg State University Digital Commons. For more information, please contact [digitalcommons@pittstate.edu](mailto:digitalcommons@pittstate.edu).

LONG LONG WAYS FROM HOME

Verse

1-- YOU ASK ME WHY I'M GRIEVIN'  
AND WHY THE TEAR DROPS START  
IT'S JUST BECAUSE I'M HOMESICK  
A SAD AND LONELY HEART  
I HEAR THE COWBOYS SINGIN'  
I SEE THEIR CAMP FIRES BRIGHT  
OH WHAT I'D GIVE TO BE THERE  
WITH MY OLD PALS TONIGHT

Chorus

LONG LONG WAYS FROM HOME  
I'M A LONG LONG WAYS FROM HOME  
LONGIN' FOR THE PRAIRIE  
WHERE I USED TO ROAM  
LONG LONG WAYS FROM HOME  
I'M A LONG LONG WAYS FROM HOME  
JUST A WEARY COWBOY  
LONG LONG WAYS FROM HOME

2-- NO MATTER WHERE I WANDER  
WHERE EVER I MAY BE  
MY HEART IS ALWAYS YONDER  
UPON THE LONE PRAIRIE  
MY SADDLE AND MY BRIDLE  
ARE HANGIN' ON THE WALL  
MY GOOD OLD BRONCHO'S WAITIN'  
TO HEAR HIS MASTER'S CALL

# LONG LONG WAYS FROM HOME

Words & Music By  
Carson J. Robison

YOU ASK ME WHY I'M GRIEV---IN'--- AND WHY THE  
NO MAT--TER WHERE I WAN--DER----- WHERE EV---ER

TEAR DROPS START--- ITS JUST BE---CAUSE I'M HOME---SICK--- A  
I MAY BE----- MY HEART IS AL---WAYS YON---DER-- UP--

SAD AND LONE---LY HEART--- I HEAR THE COW--BOYS SING---IN ---  
ON THE LONE PRAI---REE----- MY SAD---DLE AND MY BRID---LE-----

--- I SEE THEIR CAMP--FIRES BRIGHT-- OH HOW I LONG TO  
ARE RUST---IN' ON THE WALL----- MY GOOD OLD BRON--CHO'S

BE THERE WITH MY OLD PALS TO-----NIGHT---  
WAIT--IN'--- TO HEAR HIS MAS--TER'S CALL-----

I'M A LONG LONG WAYS FROM HOME---- I'M A LONG LONG WAYS FROM

HOME----- LONG---IN' FOR THE PRAI-----RIE WHERE I

USED TO ROAM---- LONG LONG WAYS FROM HOME---- I'M A

LONG LONG WAYS FROM HOME----- JUST A WEA-----RY COW----

BOY LONG LONG WAYS FROM HOME-----

Copyright 1933 By Carson J. Robison, 120 West 45th. St., New York.



# LONG LONG WAYS FROM HOME

Pearl  
Hill

## CHORUS -

LONG LONG WAYS FROM HOME----- I'm a LONG LONG WAYS FROM

HOME----- LONG---IN' FOR THE PRAI-----RIE WHERE I USED TO

ROAM--- LONG LONG WAYS FROM HOME----- I'm a LONG LONG

WAYS FROM HOME----- JUST A WEAR---Y COW-----BOY LONG LONG

WAYS FROM HOME-----

## verse

I HEAR THE COW--BOYS SING---IN!--- I SEE THEIR

CAMP FIRE BRIGHT----- Oh WHAT I'D GIVE TO BE THERE IN

MY OL' HOME TO----NIGHT-----

vocal cho -  
vocal verse  
Banjos + clarinet middle of cho. 8 bars  
vocal last 8

# LONG LONG WAYS FROM HOME

Words & Music By  
Carson J. Robison

*John*

#3 4

YOU ASK ME WHY I'M GRIEV--IN'--- AND WHY THE TEAR DROPS  
NO MAT---TER WHERE I WAN---DER--- WHERE EV---ER I MAY

START--- its JUST BE--CAUSE I'M HOME---SICK--- A SAD AND LONE--LY  
BE----- my HEART IS AL---WAYS YON---DER--- UP-----ON THE LONE PRAI--

HEART----- I HEAR THE COW--BOYS SING---IN'--- I SEE THEIR  
REE----- my SAD---DLE AND MY BRI---DLE-- ARE RUST-----IN'

CAMP FIRES BRIGHT-- HOW I LONG TO BE THERE WITH  
ON THE WALL----- my GOOD OLD BRON-CHO'S WAIT---IN'--- TO

MY OLD PALS TO-----NIGHT---  
HEAR HIS MAS-----TER'S CALL-----

#3 4

~~I'M~~ LONG LONG WAYS FROM HOME----- LONG LONG WAYS FROM

HOME--- LONG---IN' FOR THE PRAI---RIE WHERE I USED TO

ROAM----- LONG LONG WAYS FROM HOME--- LONG LONG WAYS FROM

HOME----- JUST A WEA-----RY COW-----BOY LONG LONG WAYS FROM

HOME---

Copyright 1933 By Carson J. Robison, 120 West 45th. St., New York.



John  
Robby

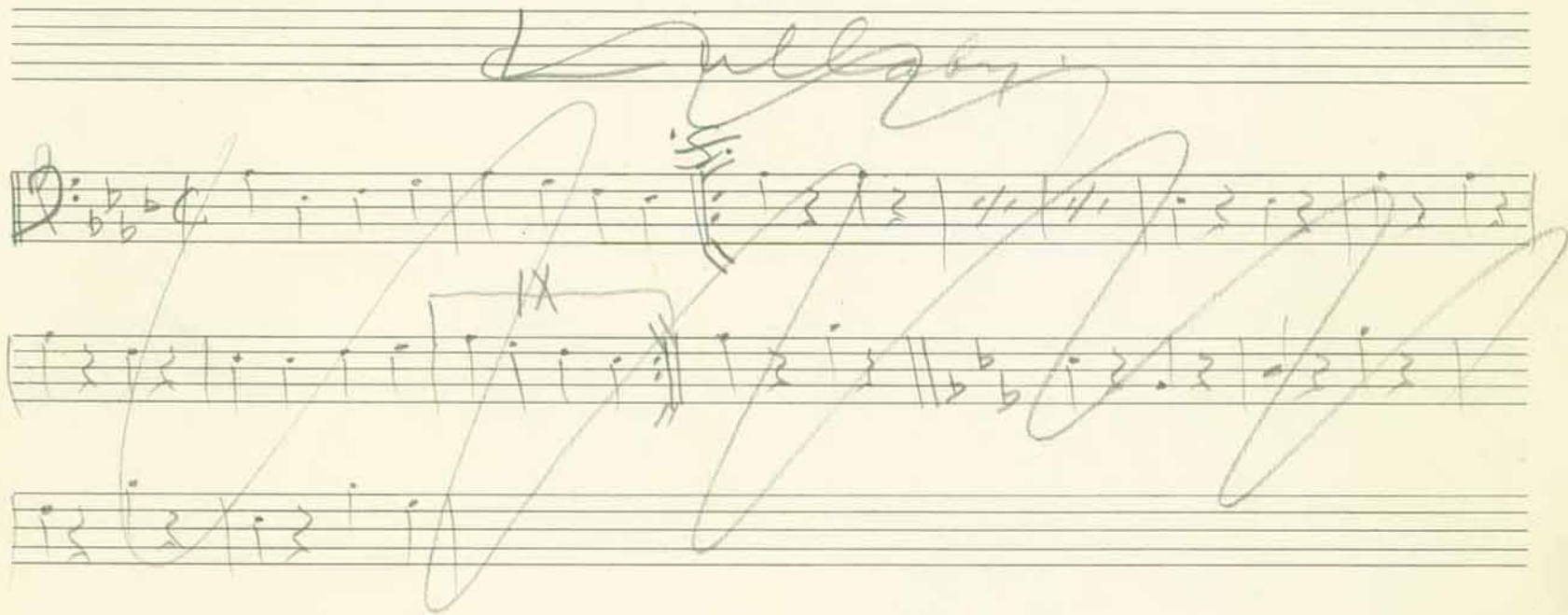
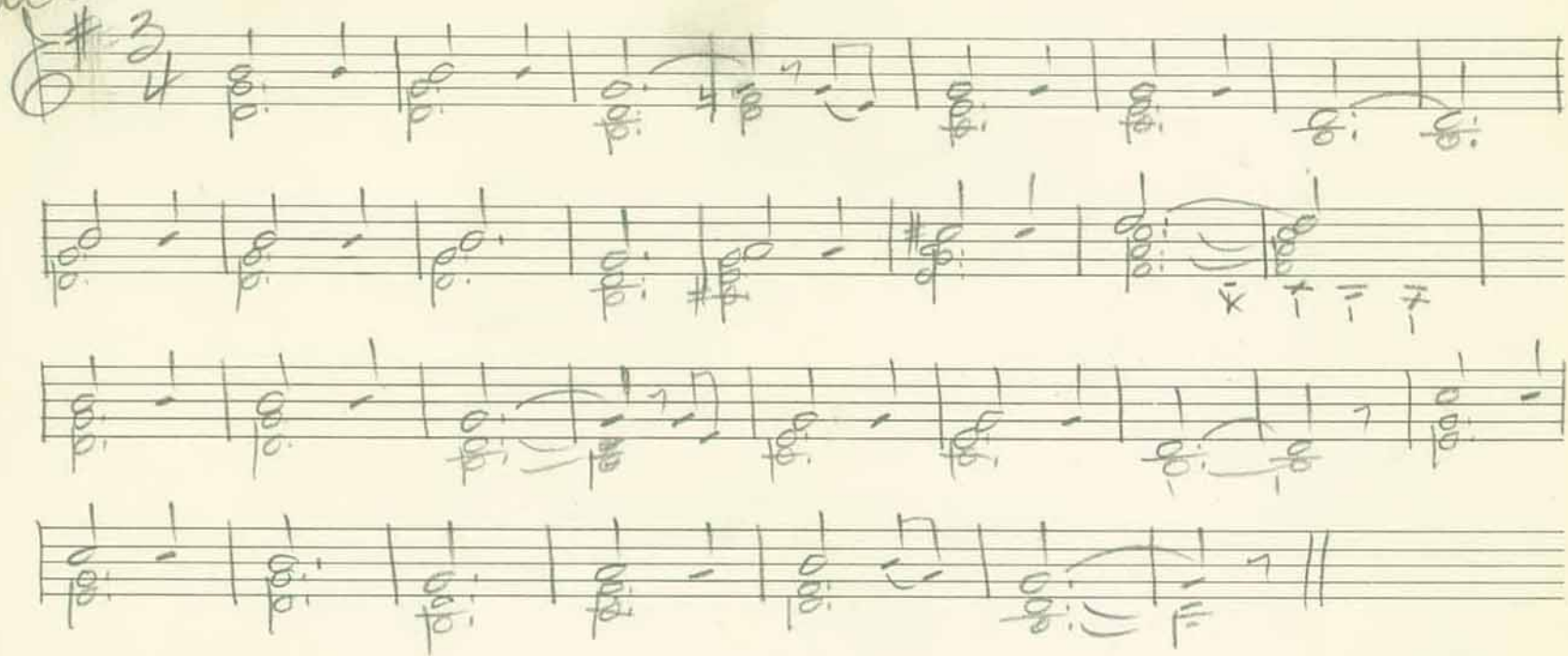
# LONG LONG WAYS FROM HOME

Handwritten musical score for "Long Long Ways From Home". The score is written on 12 staves, with the first 10 staves containing the main melody and lyrics. The key signature is one sharp (F#) and the time signature is 3/4. The lyrics are: "LONG LONG WAYS FROM HOME--- LONG LONG WAYS FROM HOME--- LONG---IN' FOR THE PRAI---RIE WHERE I USED TO ROAM----- LONG LONG WAYS FROM HOME--- LONG LONG WAYS FROM HOME--- JUST A WEAR---Y COW-----BOY LONG LONG WAYS FROM HOME I HEAR THE COW--BOYS SING---IN'---- I SEE THEIR CAMP FIRE BRIGHT----- WHAT I'D GIVE TO BE THERE--- WITH MY OL' PAL TO-----NIGHT-----". There are several handwritten annotations: a red 'X' over the first measure of the second staff, a red circle around the first measure of the third staff, and a red 'X' over the first measure of the fourth staff. The word "HOME" is written below the first measure of the first staff. The word "HOME" is written below the first measure of the third staff. The word "HOME" is written below the first measure of the fourth staff. The word "HOME" is written below the first measure of the fifth staff. The word "HOME" is written below the first measure of the sixth staff. The word "HOME" is written below the first measure of the seventh staff. The word "HOME" is written below the first measure of the eighth staff. The word "HOME" is written below the first measure of the ninth staff. The word "HOME" is written below the first measure of the tenth staff. The word "HOME" is written below the first measure of the eleventh staff. The word "HOME" is written below the first measure of the twelfth staff.

vocal chorus  
vocal verse  
banjos + charino (middle of elo - 8 bars)  
vocal last 8

*Theme* Hong Kong Ways from Home

accordion



Bass Clar.



Bass

# LONG LONG WAYS FROM HOME

Handwritten musical notation for the first section of the song. It consists of three staves. The first staff begins with a treble clef, a key signature of one sharp (F#), and a time signature of 3/4. The notation includes various musical symbols such as notes, rests, and bar lines, with some notes marked with '7'.

Chorus

Handwritten musical notation for the chorus section. It consists of six staves. The first staff begins with a treble clef, a key signature of one sharp (F#), and a time signature of 3/4. The notation includes various musical symbols such as notes, rests, and bar lines, with some notes marked with '7'.

Four empty musical staves for additional notation.