

Pittsburg State University

Pittsburg State University Digital Commons

Football Programs, 1916-2013

University Archives

9-27-1969

Northeastern Missouri vs. Kansas State Teachers College

Kansas State Teachers College

Follow this and additional works at: <https://digitalcommons.pittstate.edu/footb>

Recommended Citation

Kansas State Teachers College, "Northeastern Missouri vs. Kansas State Teachers College" (1969).
Football Programs, 1916-2013. 60.
<https://digitalcommons.pittstate.edu/footb/60>

This Book is brought to you for free and open access by the University Archives at Pittsburg State University Digital Commons. It has been accepted for inclusion in Football Programs, 1916-2013 by an authorized administrator of Pittsburg State University Digital Commons. For more information, please contact digitalcommons@pittstate.edu.

Archives
KD
E 205710
969/9-27
C1

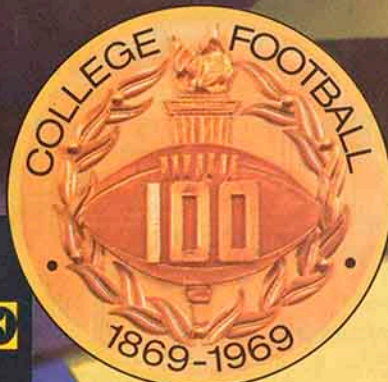
THIRTY-FIVE CENTS

KSC ... N.E. MO.

BRANDENBURG STADIUM



**THE
COLLEGE
GAME**



SEPTEMBER 27, 1969

GORILLA BOOSTERS

American Legion
AmVets
A. L. Beasley
Dr. James Bena
Dr. C. H. Benage
Dr. Vernon A. Berkey
Lewis Bertalatto
Gene Bicknell
Dr. K. J. Bierlein
Tim Biggs
B.P.O. Elks No. 412
Dave Cunningham
Daugherty Pontiac
Dick's Transfer
Bob Dittman
Paul Elliott
Dr. C. W. Erickson
Paul W. Fisher
Fogarty News
Don Gutteridge
Guys Shop
Dr. R. V. Haderlein
Harold's
Joe Hart
Holiday Lanes
Flo Holman
Claude Huffman

Jackson Electric
Claude Jackson
Paul Jones
Al Kendall
D. E. Kendall
Randall Kennon
Garry W. Lassman
Dr. Paul B. Leffler
Forest Leon
Lion's Club
John Lusker
Bob Lyerla
Dr. D. J. Lyons
Morris Matuska
Maudlin's, Inc.
Dr. Robert M. Menchetti
James R. Morgan
F. G. Morris
Motor Supply
Dr. Sam Muller
Don Musser
Otto's Cafe
Ott's TV & Appliance
Perry Owsley
Pittsburg Pottery
Palace Clothing
Randall D. Palmer
Robert Pate
Pittsburg Cable TV
Dr. G. W. Pogson
Alvin H. Procter
Dr. W. G. Rinehart

Arthur Robb
Mullen, Letton, White and Nettels
Tony Roitz
Rotary Club
Dr. David D. Russell
Albert W. Scherff
J. Doyle Shultz
Kenneth Simons
Joe Skubitz
Dr. L. L. Stumfoll
Swartz Ambulance
Taylor Paint & Wallpaper Co.
Thomas Wheel & Alignment
A. L. Thurman
Nelson E. Toburen
John Towner
Vel Fre Motel
Viatti Body Shop
VFW
A. J. Watcher
Simeon Webb
Donald Webber
Sim Wesong
Paul L. Wilbert
Willigms Chevrolet
Dr. Doug H. Wood

YEA

GORILLAS

YEA

**Crawford
County
Realty**

908 S. Bdwy

AD1-4370

**Pittsburg
Lumber Co.**

601 E. 4th

AD1-0730

**Vern Plattner
Motors**

114 S. Bdwy

AD1-2450

**Wright's
Greenhouse**

412 S. Walnut

AD1-6400

**Montgomery
Ward**

517 N. Bdwy.

AD1-3200

COME IN-LET'S GET BETTER ACQUAINTED



At 417 N. Broadway Since 1893



Drive-In Bank 4th & Walnut

THE FIRST STATE BANK **OF PITTSBURG**

MEMBER F.D.I.C.

Bankmark



**THE "FIRST"
CHARGE CARD**

HAGMAN'S

**Your Friendly House
of Service
Since 1918**

-Wholesale-

**CANDY
TOBACCO
CIGARS**

**Now in our
Second-Half Century**

231-8000

**OUR BEST
WISHES
FOR
A
SUCCESSFUL
SEASON**

**Dunton
Hardware**

Arcadia, Kansas



TOM LESTER
Head Football Coach



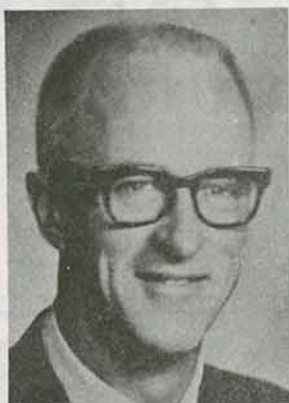
CARNIE SMITH
Athletic Director



JOE MURPHY
Line and Swimming Coach



BOB JOHNSON
Head Basketball Coach



GEORGE F. BUDD
President



BILL SAMUELS
Backfield Coach



DAVE SUENRAM
Track Coach



AL ORTOLANI
Trainer

KSC President and Athletic Staff

KSC Annual Football Awards

THE STRATTON AWARD

The Stratton Award was established just prior to the 1954 football season, in honor of Richard Stratton, a letterman in 1951 who was killed in the Korean conflict. He was the first KSC football player to lose his life after World War II.

Stratton was a native of Picher, Oklahoma, and characterized the American football player who played for fun, completely devoted to his team, without jealousy or envy, and was a genuine "member" of the team on the field, on the bench, or on the campus. It is to his team loyalty and complete dedication that a player on the team is named each year. The player need not be a letterman. The winners were:

- 1968 - Fred Linebarger
- 1968 - FRED LINEBARGER
- 1967 - Fred Held
- 1966 - Lewis Kalm
- 1965 - Ron Vignery
- 1964 - Ron Vignery and John Brunet
- 1963 - Doug Scherer
- 1962 - Bob Fulton and Tom Spiewak
- 1961 - Mike Riley
- 1960 - Jerry Louthan
- 1959 - Eldon Danenhauer
- 1958 - John Levra
- 1957 - Paul Crandell
- 1956 - Jim Skillen
- 1955 - Allen Graber
- 1954 - James Crutcher

HONORARY CAPTAINS

Team captains are usually named on a game to game basis until the season ends, at which time lettermen ballot to name their captain. Often there is a tie, or three players, once four players, who received votes sufficient to name more than one captain. They are chosen on the basis of team leadership on the field, represents the team during the season, and becomes the Honorary Captain when chosen at the conclusion of the season. The records include those chosen since 1949.

- 1968 - Charles Broyles
- 1967 - John Peterson - Fred Held
- 1966 - A. J. Wachter - John Tripp
- 1965 - Larry Basky
- 1964 - Gene John - Jerry Cummings - John Brunet - Phil Young
- 1963 - Craig Campbell
- 1962 - Tom Spiewak - Harlan Hess - Jerry Archer
- 1961 - Lewis Holmes - Tom Gosch - Richard Beal
- 1960 - Bill Brown
- 1959 - Paul Schleicher - Eldon Danenhauer
- 1958 - John Levra
- 1957 - Bill Samuels - Carroll Cobble
- 1956 - Marvin Ackerson - Bill Mosley
- 1955 - Marvin Ackerson - Jim Troxel
- 1954 - David Fowler - Bob Hill
- 1953 - Bob Coughenour
- 1952 - Bernard Hays
- 1951 - Tom Lester - Junior Rons
- 1950 - Paul Hutsey
- 1949 - Art Parkhurst - James Gumfory

OFFICIAL WATCH FOR THIS GAME LONGINES

THE WORLD'S MOST HONORED WATCH



Ultra-Chron #8214, automatic calendar, 10k gold filled case and link bracelet, \$185.

ULTRA-CHRON

THE WORLD'S MOST ACCURATE WATCH

Guaranteed accurate to a minute a month*

Requires no batteries

Unaffected by gravitational field...

therefore, not sensitive

to change of position

Fully automatic

Superior protection against water,

dust, shock, magnetism

Thinner movement,

Extraordinary reliability

Tells date, hour, minute, second

Longines, only watch

ever to win 10 World's

Fair Grand Prizes

and 28 Gold Medals.

Your Longines-Wittnauer Franchised Jeweler will adjust your Ultra-Chron to this accuracy, if necessary. Guarantee is for one year.

LONGINES

LONGINES-WITTAUER WATCH COMPANY

Longines-Wittnauer Building, New York*

For The Best In
Service, Comfort,
Convenience
and Economy

Choose
Modern Gas
Appliances

See your Gas Appliance Dealer
Plumber, Heating Contractor
Or . . .

**The Gas
Service Co.**

118 E. Fourth

AD1-3300

We Manufacture

The Best In

Wallboard

**Wallace
Manufacturing
Company**

811 E. Jefferson

AD1-8200

**Shop at one of Pittsburg's Three Big
Foodtown Super Markets**

Pittsburg is also the home of the
Foodtown Offices and Warehouse

Foodtown Super Markets

1806 N. Broadway
612 S. Broadway
312 W. Fourth

AD1-5810
AD1-4780
AD1-7420

Southeast Kansas Largest Bank

For Your Convenience:

4 Drive-In Windows

Installment Loan Dept—Open 9 to 5

Convenient Parking

The National Bank of Pittsburg

Third and Broadway

AD1-0600

TWO WINNERS

**THE GORILLAS
AND
JAYHAWK COAL**

**Mackie
Clemens
Fuel Co.**

302½ N. Bdwy.

AD1-1050

GO GORILLAS

ALWAYS TOPS

**KOAM
Radio**

860 on your Dial

First In Pittsburg

MEET THE 1969 GORILLAS



FRED SCHOENING
Guard, Fulton, Mo.



CURTIS SQUIRE
End, Humboldt



JIM BRENNAN
End, Kansas City



JIM ATWELL
Guard, Kansas City



ALBERT SCHMIDT
Halfback, Caldwell



GREG WELLS
Tackle, Fredonia



RANDY WHIPPLE
End, Bellevue, Neb.



TED ALLMON
Halfback, Pittsburg

Break your beard in right.

Right now your beard is in the formative stage.

You can shave it with a razor blade like your father does. And each time you do your beard will grow back a little more difficult. Until one day shaving's no longer a chore. It's an agony.



Look no further than your father's face for proof.

But fortunately, you're catching your beard at an early age. You can break it in to be just as shaveable 10 and 20 years from now as it is today.

With a REMINGTON® shaver.

And if you think the kind of shave we're selling won't be close enough for you, you're wrong.

Our new blades are sharper than anything that's been in an electric shaver before. And there's a dial that lets you adjust them for your skin and beard.

What's more, you can dial a REMINGTON electric shaver into a sideburn trimmer.

Admittedly, it costs more to buy our electric shaver than a razor and some blades.

But it's a good investment.

These next few years will determine how you and your beard will get along for the rest of your lives.†

SPERRY RAND® ©1969 S. R.



REMINGTON
ELECTRIC SHAVING DIVISION, BRIDGEPORT, CONNECTICUT.

**You Can Order
from our Big**

CATALOG

**as well as
SHOP**

at

**J. C.
Penney**

523 N. Bdwy

AD1-2000

**Want to Sell
Something**

Quickly

**Use Headlight-Sun
WANT ADS**

**NEWS to You
Every Morning**

**Pittsburg
Headlight-Sun**

701 N. Locust

AD1-2600

**Member of the National School Supply
and Equipment Association**

"From the Nursery to the University"

Bowlus School Supply, Co.

201 E. Fifth

School Division

AD1-3450

1015 N. Broadway

Sporting Goods Division

AD1-2290

ELECTRIC HEAT IS

Instant, Flameless, Clean, Constant, and Worry-Free

LIVE MODERN-GO TOTAL-ELECTRIC

It costs so much LESS than you think



320 N. BDWY.

AD1-4000

Call Today For FREE Estimates

**Eager
To Serve
YOU!**

**City National
Bank
Of Pittsburg**

522 S. Bdwy

AD1-8400

**Complete Wholesale
Beauty Salon
Equipment and
Supplies**

Bottenfield's, Inc.

503 N. Walnut

AD1-3900

**WE MAKE
STOCKADE MINERALS
FOR LIVESTOCK**

Harvest Brand Inc.

Country Club Road

AD1-6700

**The Gorillas
Have Quality
We Have It Too
Beck & Hill
Market**

303 N. Bdwy.

AD1-0540

**GO
GORILLAS
GO**

**First
State Bank
of Arma**

**Serving the Area
With Pride
For Many Years**

ARMA, KANSAS

Fight

Gorillas

Fight

Pittsburg

Laundry

110 N. Bdwy.

AD1-1380

Savings Invested

With Us

**Helps To Build
A Better Pittsburg**

**First Federal
Savings & Loan
of Pittsburg**

306 N. Bdwy.

AD1-3170

**GO,
GORILLAS**



MILLER'S

**The Complete
PHOTOGRAPHY
STORE**

506 N. Bdwy.

AD1-3350

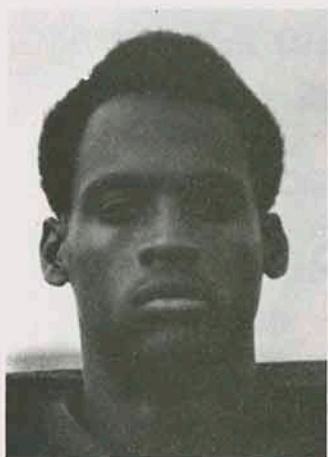
**OUR BEST
WISHES
FOR
A
SUCCESSFUL
SEASON**

**Ted's
Coal
Yard**

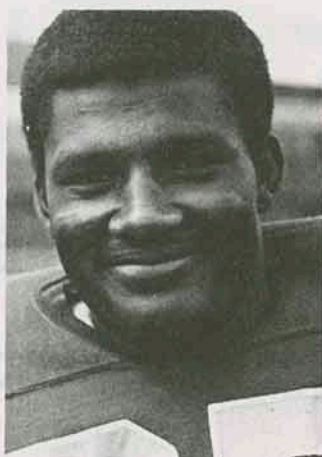
402 W. 4th

AD1-6160

MEET THE 1969 GORILLAS



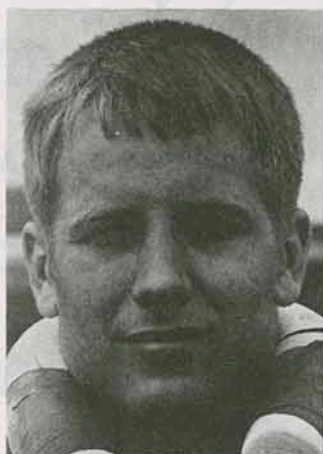
MICHAEL POWELL
End, Kansas City, Mo.



FLOYD MAY
Halfback, Kansas City, Mo.



ROGERS SMITH
Quarterback, Bellevue, Neb.



BOB NUMRICH
Center Kansas City



JOHN SAUNDERS
End, Lawrence



RON CAPPOCIA
Guard, Topeka

GORILLA BOOSTERS

Ace's Grill
George Brinkley
J. B. Towner

Jack Murray
Buick-Opel

525 S. Bdwy 231-5070



MIKE CHAPMAN
End, Fredonia

Go

Big Red

Go

**Pittsburg
Optical Service**

105 W. 5th AD1-6590

Seymour's

313 N. Bdwy. AD1-1250

Good Luck, Gorillas

**MINERS
State Bank**

211 E. McKay
Frontenac AD1-9280

**Midwest Tank and
Reservoir Service**

915 E. Jefferson AD1-2160

BEST OF LUCK GORILLAS

Sheward Realty

301 S. Pine AD1-1160

Best Wishes

to

THE GORILLAS

**Pepsi-Cola
Bottling
Company**

1211 N. Bdwy. AD1-3800

**Bitner
Realty and
Insurance**

208 N. Locust AD1-0951

WIN!

WIN!

WIN!

**Pittsburg
Automotive**

503 N. Locust

AD1-5850

Win

Gorillas

Win

**Ramsay
Brothers**

616 N. Bdwy.

AD1-9500

MEET THE 1969 GORILLAS



JOHN KOTZMAN
Halfback, Frontenac



ROBERT HOWARD
Fullback, Kansas City



HERB KERSLEY
Guard, Kincaid



RICK CLARK
Quarterback, Chanute



RAYMOND HARVEY
Quarterback, Blue Mound



MIKE POTCHAD
Tackle, Kansas City



JIM MANLEY
Guard, Ft. Scott



MERLE CLARK
Halfback, Pittsburg

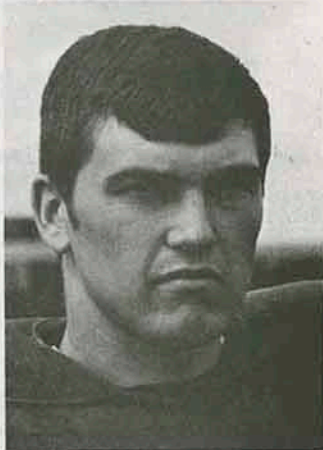
MEET THE 1969 GORILLAS



JOE LEE
Tackle, Kansas City



ROBERT HOMER
Guard, Meade



RON COMMONS
Halfback, Lawrence



TOM MICHAEL
Halfback, Topeka



RON MANN
Guard, Lawrence



GENE SCHIMPF
Tackle, Marion



RON KIETZMANN
End, Kansas City



JOE DRESSLER
Tackle, Humboldt

**A Complete Sympathetic
Funeral Service for Everyone
of Every Creed and
Income**

**Brenner
Mortuary**

114 E. 4th

AD1-5600

**For The Best
In TV
Entertainment
Turn to**

**T V 7
KOAM-TV**

Television City Kans.

AD1-0400

**We Are
Back
Of You
Gorillas**

**Tri-State
Building &
Supply Co.**

3035 N. Bdwy.

AD1-5260

Fight

Gorillas

Fight

**▼
Delleletters**

603 E. Washington

AD1-7130

**"Mother's
Only
Competitor"**

**Harry's
Cafe**

412 N. Bdwy.

AD1-9703

**Lime and
Fertilizer
Pay**

**Midwest
Minerals,
Inc.**

Girard, Kansas

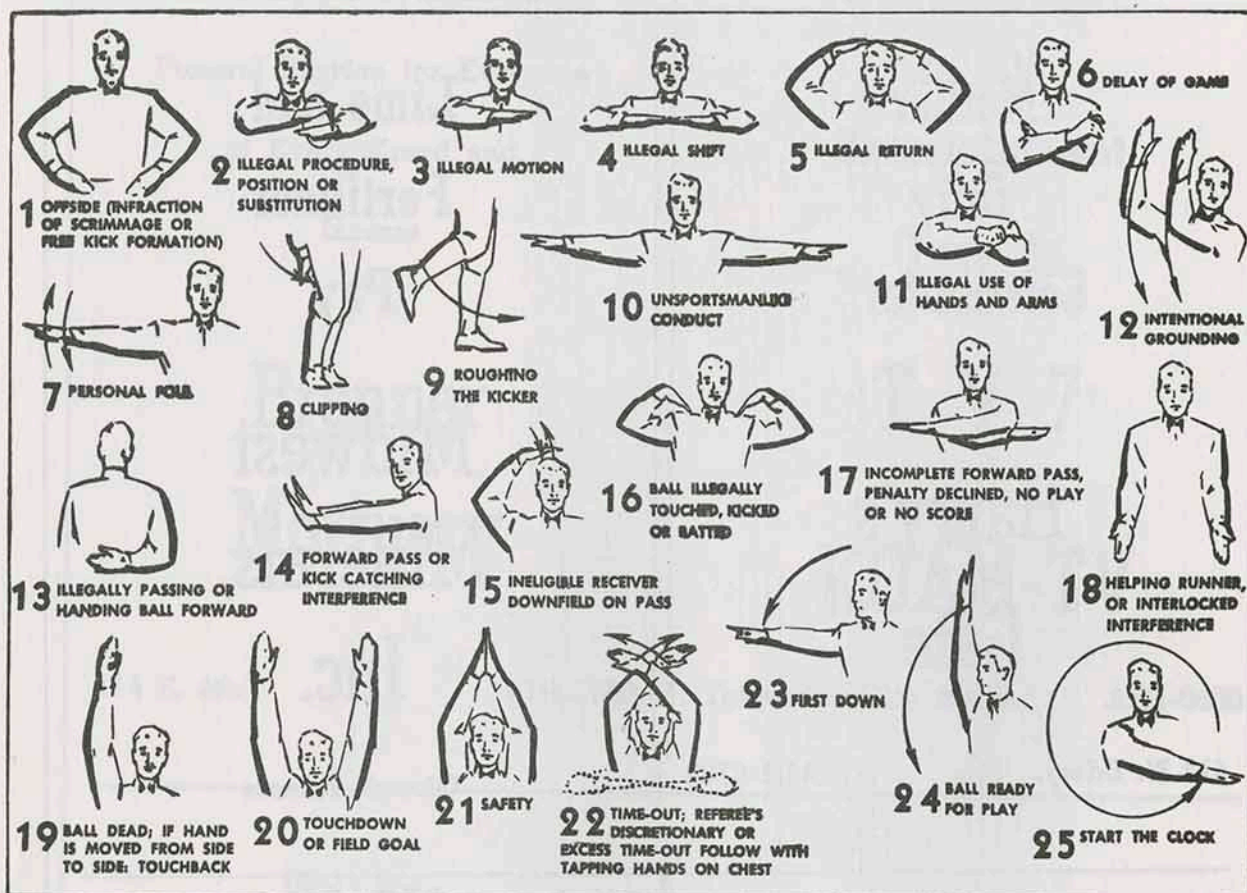
Best of Luck to the Gorillas

Wholesale Fruits and Vegetables

Fadler Produce Company

112 N. Elm

AD1-1200



1. OFFSIDE by either team; Violation of scrimmage or free kick formation; Encroachment on neutral zone—Loss of Five Yards.

2. ILLEGAL PROCEDURE, POSITION OR SUBSTITUTION—Putting ball in play before Referee signals "Ready-for-Play"; Failure to complete substitution before play starts; Player out-of-bounds when scrimmage begins, or on free kick formation; Failure to maintain proper alignment of offensive team when ball is snapped; False start or simulating start of a play; Taking more than two steps after Fair Catch is made; Player on line receiving snap; Free kick out-of-bounds—Loss of Five Yards.

3. ILLEGAL MOTION—Offensive player illegally in motion when ball is snapped—Loss of Five Yards.

4. ILLEGAL SHIFT—Failure to pause one full second in shift play—Loss of Five Yards.

5. ILLEGAL RETURN—Infraction of substitution rule—Loss of Five Yards.

6. DELAY OF GAME—Consuming more than 25 seconds in putting the ball in play after it is declared ready-for-play; Failure to remove injured player for whom excess timeout was granted; Crawling—Loss of Five Yards. Team not ready to

play at start of either half—Loss of 15 Yards.

7. PERSONAL FOUL—Tackling or blocking defensive player who has made fair catch; Piling on; Hurdling; Tripping; Grasping face mask of opponent; Tackling player out-of-bounds, or running into player obviously out of play; Loss of 15 Yards. (Flagrant offenders will be disqualified.)

8. CLIPPING—Loss of 15 Yards.

PENALTIES

9. ROUGHING THE KICKER or holder—Loss of 15 Yards.

10. UNSPORTSMANLIKE CONDUCT—Striking an opponent with fist, forearm, elbow or locked hands; Kicking or kneeling—Loss of 15 Yards (offenders will be disqualified); Violation of rules during intermission; Illegal return of disqualified player; Coaching from side lines; Invalid signal for Fair Catch; Persons illegally on field—Loss of 15 Yards. (Flagrant offenders will be disqualified.)

11. ILLEGAL USE OF HANDS AND ARMS by offensive or defensive player—Loss of 15 Yards.

12. INTENTIONAL GROUNDING of forward pass—Loss of Five Yards from spot of pass Plus Loss of Down.

13. ILLEGAL FORWARD PASS OR ILLEGALLY HANDING BALL FORWARD—Loss of Five Yards from spot of foul Plus Loss of Down.

14. FORWARD PASS OR KICK CATCHING INTERFERENCE—Interference with opportunity of player of receiving team to catch a kick—Loss of 15 yards. Interference by member of offensive team on forward pass—Loss of 15 Yards Plus Loss of Down. Interference by defensive team on forward pass—Passing Team's Ball at Spot of Foul and First Down.

15. INELIGIBLE RECEIVER DOWNFIELD ON PASS—Loss of 15 Yards.

16. BALL ILLEGALLY TOUCHED, KICKED OR BATTED—Forward pass being touched by ineligible receiver beyond the line of scrimmage—Loss of 15 Yards from Spot of Preceding Down and Loss of a Down. Eligible pass receiver going out-of-bounds and later touching a forward pass—Loss of Down; Illegally kicking the ball—Loss of 15 Yards; Illegally kicking or batting a free ball—Offended team's ball at Spot of Foul.

17. INCOMPLETE FORWARD PASS—Penalty declined; No play or no score.

18. HELPING THE RUNNER, or interlocked interference—Loss of 15 Yards.

NAYLOR-QUINN

Funeral Home

609 N. Elm

AD1-0680

**Broadway
Realty Inc.**

August Rua and Wayne Allai
REALTORS

Graduates of KSC

1504½ N. Bdwy.

AD1-3020

**W. A. Thomas
Supply Co.**

112 W. 3rd

AD1-3070

**BEST WISHES
TO
THE GORILLAS**

**Landmark
Restaurant**

2412 S. Bdwy.

231-6550

**Carlin Pruitt
Motor Co.**

107 S. Bdwy.

231-4800

**Menghini Bros.
Packing Co.**

Frontenac

231-7050

**Morwood
Appliances**

712 N. Bdwy.

231-0740

Sell & Sons

319 N. Bdwy.

AD1-1650

**Rex's Liquor
Store**

306 S. Bdwy.

231-7630

**Mike's 66
Service**

1117 W. 4th

231-5890

**Men's and Boy's
CLOTHING
and
SHOES**

**Coulter-
McGuire**

508-510 N. Bdwy.

AD1-0490

The Athletic Council appointed by the President is charged with the responsibility for carrying out the Athletic program of the College. They have many responsibilities such as stadium decorations, arrangements for concessions, tickets, seat reservations, press box, guards, half-time activities, etc.

Athletic Director Carnie Smith is chairman of the committee responsible for the Gorilla Booster and Richard I. Jacques is the editor. Refer publication matters to the Athletic Council, Phone AD1-7000.



**Big cars cost big money...
That's the way it was.**



O. J. Simpson with his big, reasonably priced 1970 Chevrolet Impala Sport Coupe.