

Pittsburg State University

## Pittsburg State University Digital Commons

---

Carson J. Robison Music Scores

Carson J. Robison, the Cowboy Radio Singer,  
1903-1988

---

2015-01-01

### Long Ago

Carson Robison

Follow this and additional works at: <https://digitalcommons.pittstate.edu/cjrms>

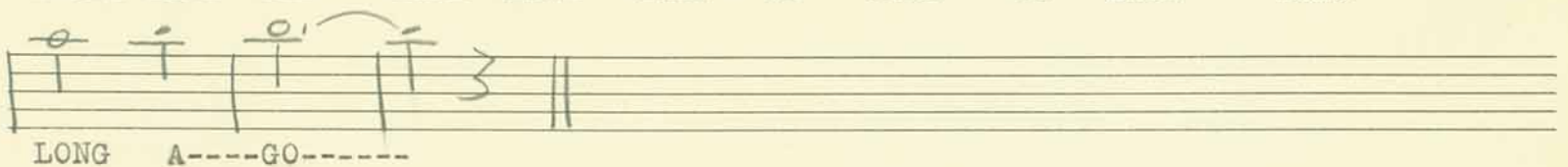
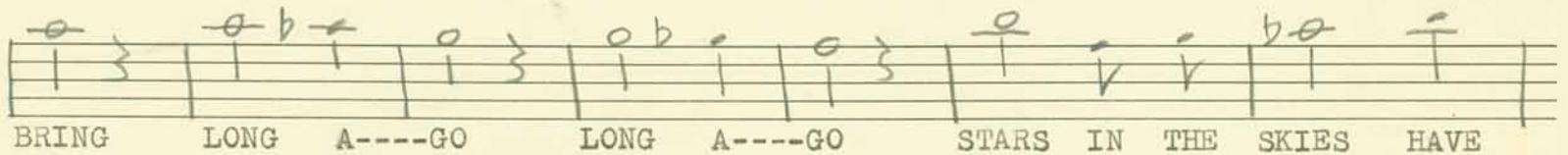
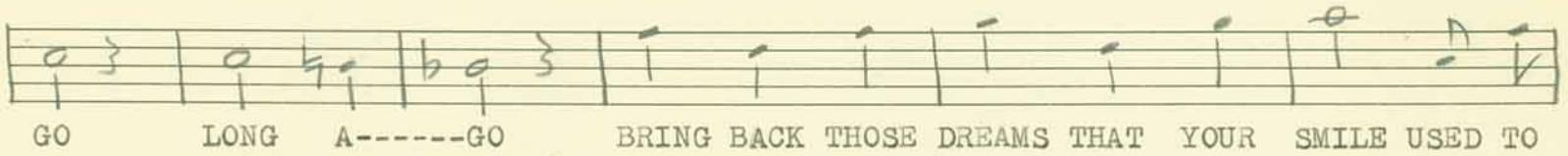
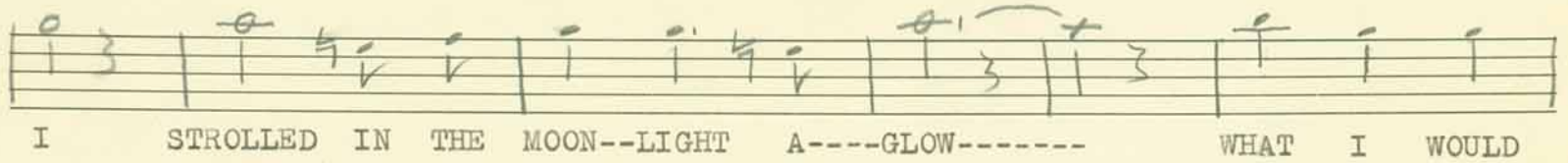
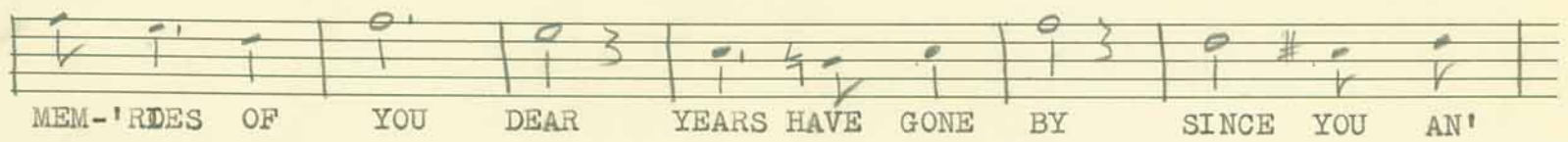
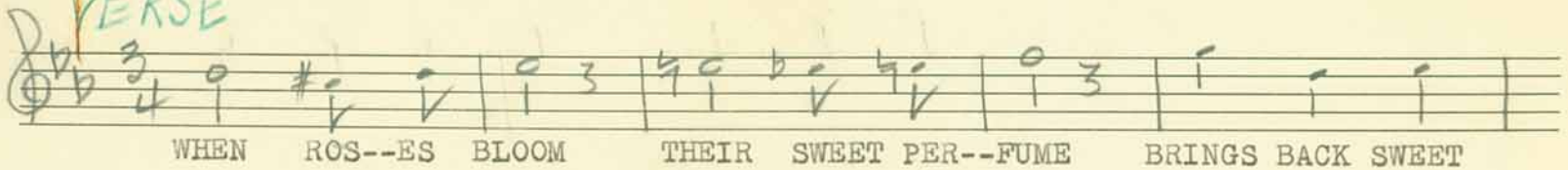
---

#### Recommended Citation

Robison, Carson, "Long Ago" (2015). *Carson J. Robison Music Scores*. 61.  
<https://digitalcommons.pittstate.edu/cjrms/61>

This Sheet Music is brought to you for free and open access by the Carson J. Robison, the Cowboy Radio Singer, 1903-1988 at Pittsburg State University Digital Commons. It has been accepted for inclusion in Carson J. Robison Music Scores by an authorized administrator of Pittsburg State University Digital Commons. For more information, please contact [digitalcommons@pittstate.edu](mailto:digitalcommons@pittstate.edu).

## VERSE



Copyright 1926 By Carson J. Robison

LONG AGO

*File*

WHEN ROSES BLOOM THEIR SWEET PERFUME BRINGS BACK SWEET  
 MEMORIES OF YOU DEAR YEARS HAVE GONE BY SINCE YOU AND  
 I STROLLED IN THE MOON LIGHT A GLOW WHAT I WOULD  
 GIVE ONCE MORE TO LIVE DAYS IN THE LONG A GO  
 BRING BACK THOSE MELLODIES WE USED TO SING  
 LONG A GO LONG A GO BRING BACK THE DREAMS THAT YOUR  
 SMILE USED TO BRING LONG A GO LONG A GO STARS IN THE  
 SKY HAVE LOST THEIR GLOW I NEVER DREAMED I WOULD  
 MISS YOU SO BRING BACK THE TRUE LOVE THAT WE USED TO  
 KNOW LONG LONG A GO



acords  
type

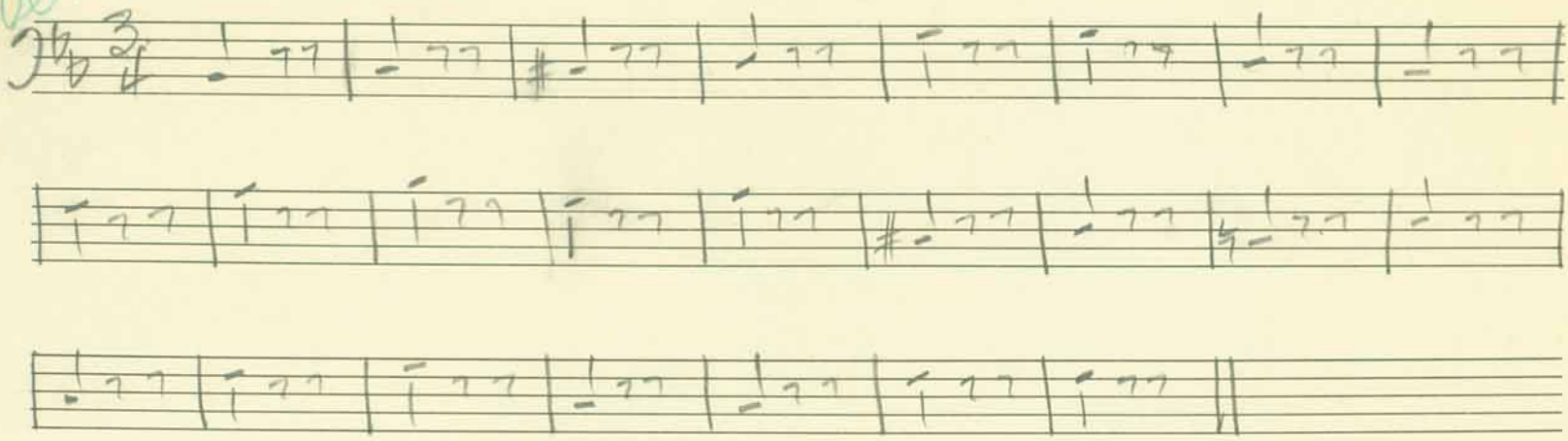
# LONG AGO (ROBISON)

Handwritten musical notation for the song "Long Ago" by Carson Robison. The notation is written on a 12-stave system. The first staff is marked with a treble clef, a key signature of one flat (B-flat), and a time signature of 3/4. The music is written in a style that appears to be a simplified or "type" notation, possibly for a specific instrument or voice part. The notation includes various notes, rests, and accidentals, with some notes marked with a "3" indicating a triplet. The piece concludes with a double bar line.

Four empty 12-stave systems, each consisting of three staves, provided for additional musical notation.

Bass  
Verse

# LONG AGO (Robison)



Chorus

