

Pittsburg State University

## Pittsburg State University Digital Commons

---

Football Programs, 1916-2013

University Archives

---

11-16-1968

### Northeastern Oklahoma vs. Kansas State Teachers College

Kansas State Teachers College

Follow this and additional works at: <https://digitalcommons.pittstate.edu/footb>

---

#### Recommended Citation

Kansas State Teachers College, "Northeastern Oklahoma vs. Kansas State Teachers College" (1968).  
*Football Programs, 1916-2013*. 57.

<https://digitalcommons.pittstate.edu/footb/57>

This Book is brought to you for free and open access by the University Archives at Pittsburg State University Digital Commons. It has been accepted for inclusion in Football Programs, 1916-2013 by an authorized administrator of Pittsburg State University Digital Commons. For more information, please contact [digitalcommons@pittstate.edu](mailto:digitalcommons@pittstate.edu).

includes  
#D  
E 26.570  
968/11-16  
C.1



# THE COLLEGE GAME

OFFICIAL PROGRAM • THIRTY-FIVE CENTS



**KANSAS STATE COLLEGE  
VS  
N. E. OKLAHOMA  
SAT. NOV. 16, 1968**

# GORILLA BOOSTERS

American Legion  
Amvets  
B. P. O. Elks No. 412  
T. W. Bath  
Dr. James Bena  
Dr. C. H. Benage  
David P. Benelli  
Dr. Vernon Berkey  
Dr. K. J. Bierlein  
E. L. Bournonville  
Rex Bowers  
Dr. James L. Buckles  
Orval Close  
Dave Cunningham  
Dr. C. W. Erickson  
Paul W. Fisher  
Philip Glick  
Don Gutteridge  
Flo Holman  
Claude Huffman  
Dr. John Kazmerski  
Al Kendall  
Randall Kennon  
Garry W. Lassman  
Dr. Paul B. Leffler  
Forest Leon  
Lions Club  
Dr. D. J. Lyons  
Morris Matuska  
Edward T. McNally  
Dr. Robert Menchetti  
Dr. Earl Miller  
F. G. Morris  
Dr. S. B. Muller  
Don Musser  
Perry Owsley  
Randall D. Palmer  
Robert Pate

Dr. George W. Pogson  
Arthur Rader  
Dr. W. G. Rinehart  
Arthur Robb  
Rotary Club  
Albert Scherff  
H. L. Spuin  
Dr. L. L. Stumfoll  
Nelson E. Toburen  
J. J. Towner  
John B. Towner  
Veterans of Foreign Wars  
Guy Von Schrittz  
Walker & Phalen  
Simeon Webb  
Donald Webber  
S. P. Wesonig  
Paul L. Wilbert  
Dr. D. H. Wood

You Can Order  
from our Big

CATALOG

as well as  
SHOP

at

J. C.  
Penney

523 N. Bdwy

AD1-2300

# THE Gorilla Booster

## Official Athletic Program of Kansas State College of Pittsburg

Price Thirty-five Cents Includes Tax

---

HOME		AWAY	
Pittsburg 27	S. W. Mo. State 20	Pittsburg 3	Central Okla. 29
Pittsburg 7	U of N, Omaha 14	Pittsburg 7	Southern Colo. 10
Pittsburg 27	KSTC, Emporia 27	Pittsburg 15	N. E. Mo. State 18
Pittsburg 14	Missouri Southern 3	Pittsburg 14	Washburn University 0
Nov. 16	N. E. Okla. State	Pittsburg 19	Ft. Hays State 13

---

A winning season is in the offing this afternoon as Kansas State College of Pittsburg closes out the 1968 football campaign against Northeastern Oklahoma State in Brandenburg Stadium in Military Day activities. The Gorillas go into this game with an overall record of 4-4-1 and a second place tie with Emporia State in CIC with a 2-1-1 record. The Northeastern Redmen are looking for their fourth straight win with a 5-4 season mark. The seven seniors that will be playing their last game for Coach Tom Lester and for Kansas State College of Pittsburg are Charles Broyles, Rod Ivy, Fred Linebarger, Gary Massey, Don Streets, Roger Barney, and Larry Beard. As a special feature of "Military Day" at the College, the ROTC unit will host a group of wounded veterans of the Vietnam conflict. The veterans will be flown from the Ft. Riley hospital to Pittsburg where they will be the guests of Col. Jack S. French, chairman of the department of military science, and the Cadet unit at a luncheon at noon and the afternoon festivities of the ballgame. Preceding the game and at halftime the Cadet Corps will march on the field and present its drill team and band.

---

### GORILLA COACHING STAFF

Tom Lester, Head Coach  
Joe Murphy, Ass't Coach  
Bill Samuels, Ass't Coach  
Alfred Ortolani, Trainer  
Willie Adkins, Staff Assistant  
Jerry Archer, Staff Assistant  
Billy Rink, Staff Assistant  
Phil Vogrin, Staff Assistant

### REDMAN COACHING STAFF

Tracy Norwood, Head Coach  
Gerald Benn, Assistant Coach  
George Elliott, Assistant Coach  
John McFarlin, Assistant Coach  
Bud Casey, Assistant Coach  
Tim Hendricks, Trainer

---

The front cover was designed and printed by Spencer Advertising Company, Inc., 271 Mad. Ave., N. Y.  
Represented for National Advertising by **Spencer Advertising Company, Inc.**, 271 Mad. Ave., New York City

---

Printed by Printing Division of the School of Technology

We Manufacture

The Best In

Wallboard

Wallace  
Manufacturing  
Company

811 E. Jefferson

AD1-8200

For The Best In  
Service, Comfort,  
Convenience  
and Economy

Choose  
Modern Gas  
Appliances

See your Gas Appliance Dealer  
Plumber, Heating Contractor  
Or . . .

The Gas  
Service Co.

118 E. Fourth

AD1-3300

We Are  
Back  
Of You  
Gorillas

•  
Tri-State  
Building &  
Supply Co.

3035 N. Bdwy.

AD1-5260

Fight Gorillas, Fight

Fieldcrest Superette

2006 S. Joplin

AD1-6500

NAYLOR-QUINN

Funeral Home

609 N. Elm

AD1-0680

GOOD LUCK GORILLAS

Daugherty Pontiac

119 N. Bdwy.

AD1-0900

John's Sports  
Center

1511 N. Bdwy.

AD 1-7740

A Complete Sympathetic  
Funeral Service for Every-  
one of Every Creed and  
Income



Brenner  
Mortuary

114 E. 4th

AD1-5600

GO

GORILLAS

GO

**FIRST  
STATE BANK  
OF ARMA**

Serving the Area  
With Pride  
For Many Years  
ARMA, KANSAS

**TWO  
WINNERS**

THE GORILLAS  
and  
JAYHAWK COAL

**MACKIE  
CLEMENS  
COAL CO.**

502 1/2 N. Bdwy. AD1-1050

Good Luck, Gorillas

**MINERS  
State Bank**

211 E. McKay  
Frontenac AD1-9280

YEA, YEA, GORILLAS

**Moore Furniture**

622 N. Bdwy AD1-6360

**Helen Maletz  
Insurance Agency**

102 W. Fourth AD1-0640

Go

Big Red

Go

**Pittsburg  
Optical Service**

105 W. 5th AD1-6590

**Fight Gorillas, Fight  
Saia Explosives**

303 E. McKay Frontenac  
AD1-9610

The Gorillas  
Have Quality

We Have It Too



**BECK & HILL  
Market**

303 N. Bdwy. AD1-0540

WIN!

WIN!

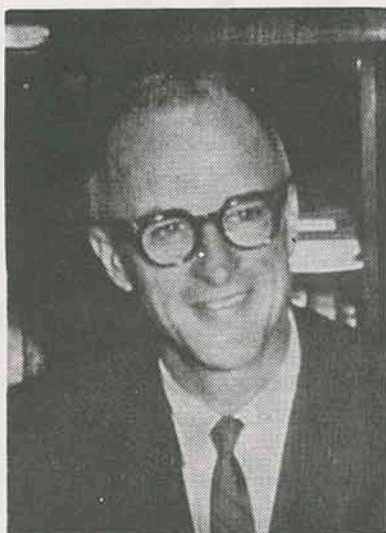
WIN!



**Pittsburg  
Automotive**

503 N. Locust AD1-5850

## WHO'S WHO AT PITTSBURG . . .



GEORGE F. BUDD  
President

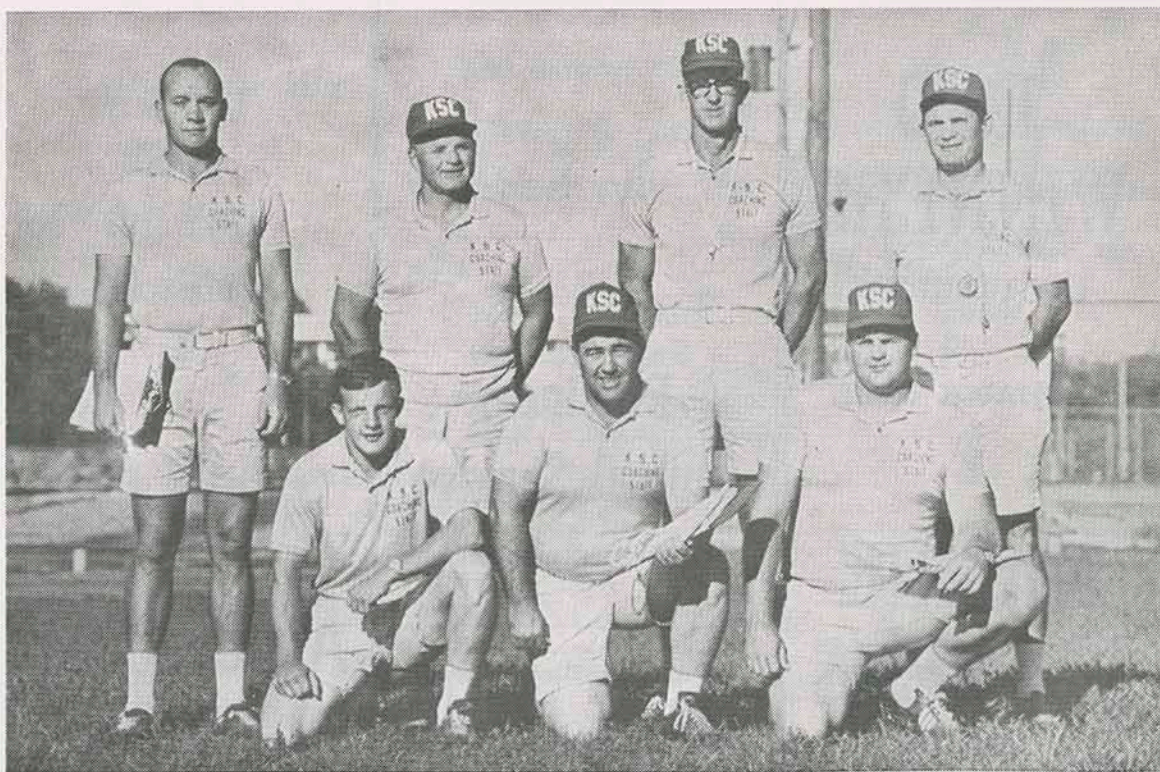


CARNIE SMITH  
Director of Athletics



PRENTICE GUDGEN  
Chairman of Phys. Ed Dept.

## KSC COACHING STAFF



Front Row, left to right: Billy Rink, Staff Assistant; Willie Adkins, Staff Assistant; Jerry Archer, Staff Assistant. Back Row, left to right: Phil Vogrin, Staff assistant; Joe Murphy, Assistant Coach; Tom Lester, Head Coach; and Bill Samuels, Assistant Coach

**CARNIE SMITH**  
Athletic Director

Carnie Smith is KSC's director of athletics. resident Budd announced the new full-time assignment following completion of Smith's 18th season as head football coach at the College in 1966.

Recognized by many as one of Pittsburg's foremost ambassadors of goodwill, Smith closed out his KSC coaching career with a record of 116 wins, 52 losses and 6 ties including two 11-0 seasons that brought Pittsburg two national championships within five years. In 1957 the Gorillas won the Holiday Bowl National Association of Intercollegiate Athletics Championship at St. Petersburg, Florida, and in 1961 won the Camellia Bowl at Sacramento, California, for the second NAIA championship. His 1961 squad was rated the No. 1 small college football team in the nation by AP, UPI and NAIA.

Many honors have been bestowed upon Carnie including NAIA Hall of Fame membership, the presidency of the NAIA Coaches Association in 1961-63, and the NAIA Coach of the Year award and Greater Kansas City area Byline Club's first annual Sports Page Award, both in 1961. He has received numerous citations for his activities in the NAIA and he has been cited for outstanding service at Alliance Football Rules Meetings in Chicago.

**PRENTICE GUDGEN**  
Department Chairman

Prentice Gudgen is chairman of the department of health, physical education and recreation. He was formerly athletic director and track coach, but relinquished these duties with the opening of the spring semester, 1967, to give full time to the department chairmanship and the directing of an extensive study of the health, physical education and recreation curriculum, including detailed planning for a new physical education building.

**OFFICIAL WATCH  
FOR THIS GAME**



**LONGINES**

**THE WORLD'S  
MOST HONORED  
WATCH®**

10 world's fair grand prizes  
28 gold medals



Longines watches are recognized as OFFICIAL for timing world championships and Olympic sports in all fields throughout the world.



Longines Ultra-Chron #8205, automatic with calendar, \$175.  
Other Ultra-Chron Models, \$115 to \$595.

**the fabulous, new  
LONGINES ULTRA-CHRON®**

**Guaranteed Accurate To A Minute A Month\***

The ultimate personal chronometer, guaranteed accurate to a minute a month—a mean average of 2 seconds per day. Ultra-Chron tells the date, hour, minute, second. Never needs batteries. Winds automatically while you wear it. All Proof® construction defeats water, dust, shock, magnetism. At Longines-Wittnauer Franchised Jewelers, coast-to-coast.

\*Your Longines-Wittnauer Franchised Jeweler will adjust your Ultra-Chron to this accuracy, if necessary. Guarantee is for one year.

**LONGINES-WITTAUER WATCH CO.**  
NEW YORK • MONTREAL • GENEVA  
Maker of Watches Of The Highest Character  
For Over A Century



The Downtown Bank at the Sign  
of the Revolving Clock

Since  
1903

A Complete Banking  
and  
Trust Service

Member  
FDIC

The First State Bank  
of Pittsburg

417 N. Broadway  
Fourth and Walnut

Main Bank  
Drive-In Bank

AD1-2000  
AD1-2016

**ALL SUCCESS**  
to the  
**GORILLAS**



**Ellsworth  
Funeral  
Home**

Bob Wilson, Director

114 W. 6th

AD 1-0250

"Scrap 'em  
Gorillas"

**S. A. Rose**  
IRON & METAL  
COMPANY

501 N. Joplin AD1-0620

**Oldham  
Dairy**

512 S. Georgia AD1-4110

**Seymour's**

513 N. Bdwy. AD1-1250

WE ARE  
ROOTING FOR  
A WINNER

**Dickey  
Clay  
Manufacturing  
Company**

900 E. 2nd

AD1-1400

Eager  
To Serve  
YOU!

City National  
Bank  
Of Pittsburgh

522 S. Bdwy

AD1-8400

Prescription  
Specialists

Cut-Rate  
Prices

Free  
Delivery

Lindburg  
Drug  
Inc.

611 N. Bdwy

AD1-7300

## ELECTRIC HEAT IS

Instant, Flameless, Clean, Constant, and Worry-Free

### LIVE MODERN-GO TOTAL-ELECTRIC

It costs so much LESS than you think

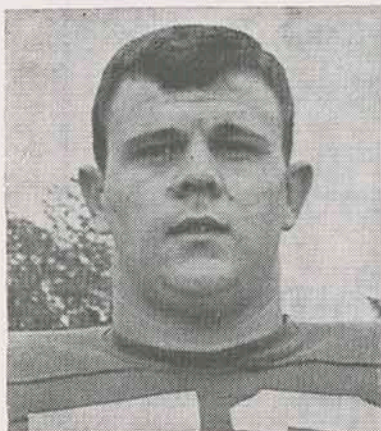


320 N. BDWY.

AD1-4000

Call Today For FREE Estimates

**MEET THE  
1968  
GORILLAS**



**CHARLES BROYLES**  
Tackle, Mulberry



**ROGERS SMITH**  
Quarterback, Bellevue, Neb.

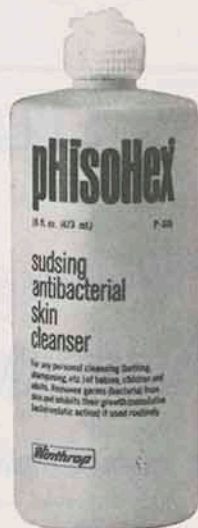


**RON KIETZMANN**  
End, Kansas City



**We're proud...**

that pHisoHex® has been selected as the antibacterial wash to be used by the U.S. Team for the 1968 Olympic Games!



A winning athlete takes special care of his skin. Above all, he protects it against bacteria that can cause infections and lead to missed practice sessions and games.

If you've ever tried to play with an infected blister on your heel or an abscess on your finger, then you know the role of healthy skin in sports. And that's why pHisoHex is an important part of an athlete's daily health routine.

pHisoHex is America's leading liquid antibacterial skin cleanser in homes and in hospitals. Used regularly in place of soap, pHisoHex produces a superclean skin and builds up an invisible antibacterial film of hexa-

chlorophene to protect your skin against germs between washings.

And if you have problem skin, pHisoHex is often valuable. The antibacterial film it leaves on your face will ward off blemish-infecting bacteria. pHisoHex also helps to soften and wash away blackheads.

Use pHisoHex, the skin cleanser of winning athletes.

Made by Winthrop Laboratories, 90 Park Avenue, New York, N.Y. 10016. Available in drugstores in 5 oz. and 16 oz. plastic squeeze bottles.



Winthrop Laboratories, New York, N.Y. 10016

BEAT'EM GORILLAS

## Van Hoy Used Cars

921 S. Bdwy AD1-9200

---

Fight Gorillas, Fight  
**Smith Funeral Home**  
510 S. Bdwy. AD1-4700

---

BEST OF LUCK GORILLAS

## A&W Rootbeer

1609 N. Bdwy AD1-9560

---

## Flowers by Gale

For All Occasions

422 N. Bdwy AD1-1800

---

Fight Gorillas, Fight

## Messenger Lumber Co.

822 E. 4th AD1-0700

---

## The Pizza Hut

102 E. Quincy AD1-8990

## Broadway Realty Inc.

August Rua and Wayne Allai  
REALTORS

Graduates of KSC

1504½ N. Bdwy. AD1-3020

---

YEA, YEA, GORILLAS

## Roitz Oil Co.

Kansas & Joplin AD1-5610

---

Fight Gorillas, Fight

## Holiday Lanes

2406 N. Bdwy AD1-2222

---

## W. A. Thomas Supply Co.

112 W. 3rd AD1-3070

---

## LITTLE'S, INC.

Ladies Ready-to-Wear

515 N. Bdwy. AD1-1220

---

## Montgomery

Ward

517 N. Bdwy. AD1-3200

---

## United Weatherproofing

915 E. Jefferson AD1-2160

GO,  
GORILLAS

G. E.

Knost

Novelty

Co.

1211 E. Fourth AD1-5240

---

Go

Big Red

Go

The  
Oxford  
Shop

Across The Street  
From The College

"MOTHER'S  
ONLY  
COMPETITOR"

## Harry's Cafe

412 N. Bdwy. AD1-9703

---

## Paul Jones Realty

106 E. 5th AD1-6800

---

## Gutteridge Pharmacy

606A N. Bdwy AD1-3410

---

## A & A Food Store

202 S. Bdwy AD1-7220

---

## Martinous Produce Co.

618 E. 7th AD1-5840

---

## Midwest Tank and Reservoir Service

915 E. Jefferson AD1-2160

## Gragg Typewriter Co.

110 W. 4th AD1-3760

---

## Williams Jewelry

424 N. Bdwy AD1-2130

---

## Pittsburg Lumber Co.

601 E. 4th AD1-0730

---

## Decker Insurance Agency, Inc.

115 W. 4th AD1-3660

---

## Southern's Vickers Service

510 W. 4th AD1-9883

---

## Bud's Jewelry

720 N. Bdwy AD1-7399

---

## Plaza Supermarket

Across from the College

---

## Pittsburg Ambulance Service

915 N. Bdwy AD1-4600

Go  
Big Red  
Go



## Arma Elevator Company

800 E. 14th AD1-5000

---

### COMMERICAL PRINTERS

Programs

Catalogs

Annuals

Business Forms



## Pittcraft, Inc.

104 N. Locust AD1-6200

---

## Abe's Flowers

108 N. Bdwy AD1-5690

# Past Individual Award Winners

## W. G. PARROTT AWARD

*Instituted 1963*

(Most Valuable Players)

- 1967 John Peterson
- 1966 A. J. Wachter—John Peterson—Gary Wilson
- 1965 Larry Basky
- 1964 Gene John
- 1963 Craig Campbell—Gaylen McCubbin
- 1962 Bob Fulton—Tom Spiewak
- 1961 Gary Snadon
- 1960 Jerry Archer
- 1959 Paul Schleicher
- 1958 John Levra—Paul Schleicher
- 1957 Len Mansfield
- 1956 Marvin Ackerson—Lynn Pollock
- 1955 Marvin Ackerson—Spencer Carter
- 1954 Bob Hill—Ray McDaniel
- 1953 Bob Hill
- 1952 Dale Neth—Paul Friskel
- 1951 Buddy Ball—Bert Lewis
- 1950 Buddy Ball
- 1949 Jim Jolgen

## HONORARY CAPTAINS

- 1967 John Peterson—Fred Held
- 1966 A. J. Wachter—John Tripp
- 1965 Larry Basky
- 1964 Gene John—Jerry Cummings—John Brunet—Phil Young
- 1963 Craig Campbell
- 1962 Tom Spiewak—Harlan Hess—Jerry Archer
- 1961 Lewis Holmes—Tom Gosch—Richard Beal
- 1960 Bill Brown
- 1959 Paul Schleicher—Eldon Danenhauer
- 1958 John Levra
- 1957 Bill Samuels—Carroll Cobble
- 1956 Marvin Ackerson—Bill Mosley
- 1955 Marvin Ackerson—Jim Troxel
- 1954 David Fowler—Bob Hill
- 1953 Bob Coughenour
- 1952 Bernard Hays
- 1951 Tom Lester—Junior Rons
- 1950 Paul Hutsey
- 1949 Art Parkhurst—Jim Gumfory

## SUNFLOWER AWARD

*Instituted 1963*

- 1967 Fred Held
- 1966 A. J. Wachter
- 1965 Ron Vignery
- 1964 John Brunet
- 1963 Wayne Young

(Given annually to the graduating senior with the highest overall grade point average)

## STRATTON AWARD WINNERS

- 1967 Fred Held
- 1966 Lewis Kalm
- 1965 Ron Vignery
- 1964 John Brunet—Ron Vignery
- 1963 Doug Scherer
- 1962 Bob Fulton—Tom Spiewak
- 1961 Mike Riley
- 1960 Jerry Louthan
- 1959 Eldon Danenhauer
- 1958 John Levra
- 1957 Paul Crandell
- 1956 Jim Skillen
- 1955 Allen Graber
- 1954 James (Tex) Crutcher

(Given annually by vote of team members to the player showing most sportsmanship, loyalty and inspiration, in honor of Richard Stratton, killed in service in 1952.)

GO  
GO  
GO  
**GORILLAS**

**Burnidge  
Welding  
Supplies**

321 E. 4th      AD1-6010

**TOOLS &  
Industrial Equipment  
PIPES & FITTINGS**  
Established Since 1914

**General  
Machinery Co.**

512 N. Elm      AD1-1550

BEST WISHES  
TO  
THE GORILLAS

•  
**Bob's Textile  
Care Service**

1608 S. Bdwy.      AD1-0650

**SMASH 'EM**

▼  
**Automatic  
Termite  
Control**

506 S. Bdwy.      AD1-6920

**Vern Plattner  
Motors**

114 S. Bdwy      AD1-2450

**Shop at one of Pittsburg's Three Big  
Foodtown Super Markets**

Pittsburg is also the home of the  
Foodtown Offices and Warehouse

**Foodtown Super Markets**

1806 N. Broadway  
612 S. Broadway  
312 W. Fourth

AD1-5810  
AD1-4780  
AD1-7420

# Southeast Kansas Largest Bank

For Your Convenience:

4 Drive-In Windows

Installment Loan Dept—Open 9 to 5

Convenient Parking

## The National Bank of Pittsburg

Third and Broadway

AD1-0600

Pittsburg's Friendly  
Department Store  
  
Famous Brands's for  
Every Member of the  
Family

•  
Back The Gorillas!

**Jones Store  
Co.**

411 N. Bdwy.

AD1-4200

JOHN R. THOMAS  
Frame & Wheel Alignment  
PHONE 231-0940  
219 S. Broadway

WIN  
GORILLAS  
WIN

Dick's Transfer

910 N. Bdwy

AD1-1880

RCA  
Ott's TV and  
Appliance  
1301 N. Bdwy AD1-1810

**Fight**

**Gorillas**

**Fight**



**Delletters**

603 E. Washington

AD1-7130



# GORILLA STATISTICS

No.	Name	Pos.	Weight	Height	Hometown	Class
10	Alpha Bibbs	HB	170	5-8	Kansas City, Mo.	Jr.
11	Jerry Ward	HB	165	5-9	Kearney, Mo.	Fr.
12	Dave Uzelac	HB	160	5-8	Kansas City	So.
14	Bob Wheaton	HB	180	5-8	Fredonia	Fr.
21	Rod Ivy	QB	185	6-0	Honey Grove, Tex.	Sr.
22	Rogers Smith	QB	160	5-10	Bellevue, Neb.	So.
23	Dave Melchori	HB	175	6-0	Frontenac	So.
24	John Reynolds	QB	165	5-10	Kansas City	Fr.
27	Gary Taylor	QB	170	6-0	Joplin, Mo.	Fr.
32	Craig Pearson	HB	170	5-10	Shawnee Mission	Fr.
33	Roger Easley	E	180	6-1	Huntsville, Ala.	Fr.
34	Larry Beard	FB	215	6-1	Pittsburg	Sr.
35	James Burke	FB	195	5-11	Oswego	Fr.
36	Bob Howard	FB	215	6-1	Kansas City	Jr.
42	Jim Brennan	E	195	6-0	Kansas City	So.
43	Albert Schmidt	HB	195	6-1	Caldwell	Fr.
44	Ron Commons	HB	165	6-0	Lawrence	Fr.
46	Ted Allmon	HB	165	5-9	Pittsburg	Jr.
48	Don Collins	QB	170	5-11	Webb City, Mo.	Fr.
51	Steve Esposito	G	170	5-7	Elmont, N. Y.	Fr.
54	Fred Linebarger	C	200	5-10	Shawnee Mission	Sr.
55	Michael Powell	E	190	6-0	Lee Summit, Mo.	Fr.
56	Bob Numrich	C	180	5-10	Shawnee Mission	Jr.
58	Roger Barney	C	195	5-10	Olathe	Sr.
61	Ralph Ramsey	G	180	5-11	Altamont	Fr.
62	Fred Schoening	G	195	5-9	Fulton, Mo.	Jr.
63	Greg Wells	G	215	5-10	Fredonia	So.
64	Jim Manley	G	200	5-10	Fort Scott	Fr.
65	Don Krug	G	225	5-7	Jacksonville, Fl.	Jr.
66	Don Barcus	G	180	5-10	Oswego	Fr.
67	Gary Massey	G	200	5-10	Shawnee Mission	Sr.
68	Bob Homer	G	180	5-10	Meade	Fr.
69	Larry Lemon	G	170	5-9	Claflin	Fr.
71	Dick Adams	T	195	6-0	Kansas City	So.
72	Charles Broyles	T	235	6-2	Mulberry	Sr.
73	Gene Schimpf	T	240	6-4	Marion	Jr.
74	Mike Potchad	T	240	6-6	Kansas City	So.
75	Jim Drummond	E	210	6-2	Ashville, N. C.	Fr.
76	John Farrar	T	215	6-1	Iola	Fr.
77	Jack Milligan	G	180	5-11	Overland Park	Fr.
78	Charles Killinger	T	220	5-9	Joplin, Mo.	So.
79	Phil Schmidt	G	210	6-0	Caldwell	Fr.
80	Greg Bankhead	E	155	5-9	Kansas City	Fr.
81	Andy Brown	E	180	6-0	Overland Park	Fr.
82	John Saunders	E	196	6-0	Lawrence	So.
83	Mike Chapman	E	175	6-0	Fredonia	Fr.
84	Tom Hicks	E	175	6-1	Overland Park	Fr.
85	Curtis Squire	E	187	5-11	Humboldt	So.
86	Kris Petrich	E	170	6-0	Warren Robbins, Ga.	Fr.
87	Tom Kennard	E	170	6-0	Shawnee Mission	So.
88	Ron Welch	E	195	6-0	Kearney, Mo.	Fr.
89	Ron Kietzmann	E	210	6-0	Kansas City	So.

"OFFICIAL WATCH FOR THIS GAME—LONGINES—THE WORLD'S MOST HONORED WATCH"

Oldsmobile recreates a scene from the classic movies.



## Olds Delta 88 Royale: The bold and the beautiful.

Meet our new top-of-the-line 88. Big-car room and ride on a longer 124-inch wheelbase. Vinyl roof, pin-striping, fender louvers, big Rocket 455 V-8 and much more, standard. All for little more than you'd pay for an ordinary car! **Escape from the ordinary.**





Coca-Cola

TRADE MARK ®

Coca-Cola

Coke

Coca-Cola

Coke has the taste

TRADE-MARK ®

COCA-COLA AND "COKE" ARE REGISTERED TRADE-MARKS WHICH IDENTIFY ONLY THE PRODUCT OF THE COCA-COLA COMPANY. PRINTED IN U.S.A.

## KANSAS STATE

Probable Offensive Lineup

83	MIKE CHAPMAN	.....LE
74	MIKE POTCHAD	.....LT
62	FRED SCHOENING	.....LG
56	BOB NUMRICH	.....C
67	GARY MASSEY	.....RG
73	GENE SCHIMPF	.....RT
85	CURTIS SQUIRE	.....RE
21	ROD IVY	.....QB
46	TED ALLMON	.....LH
43	ALBERT SCHMIDT	.....RH
36	BOB HOWARD	.....FB

## N.E. OKLAHOMA

Probable Offensive Lineup

80	R. G. COGLE	.....LE
79	CLARENCE NEWTON	.....LT
63	TOMMY O'MALLEY	.....LG
50	ART RUBY	.....C
61	NORMAN KAUBIN	.....RG
66	TIM LIVESAY	.....RT
84	AL SIMMONS	.....RE
12	ROY BURK	.....QB
20	KEN REDDING	.....WB
46	MANNY BRITTO	.....TB
33	ROGER HORN	.....FB

### —OFFICIALS—

Referee	..... Russell Sehon	Head Linesman	..... Tom Carlson
Umpire	..... Chet Laney	Field Judge	..... Quincy Seymour

## KSC SQUAD

10	Bibbs, HB	63	Wells, G
11	Ward, HB	64	Manley, G
12	Uzelac, HB	65	Krug, G
14	Wheaton, HB	66	Barcus, G
21	Ivy, QB	67	Massey, G
22	Smith, R., QB	68	Homer, G
23	Melchori, HB	69	Lemon, G
24	Reynolds, QB	72	Broyles, T
27	Taylor, QB	73	Schimpf, T
32	Pearson, HB	74	Potchad, T
33	Easley, E	75	Drummond, E
34	Beard, FB	76	Farrar, T
35	Burke, FB	77	Milliagan, G
36	Howard, FB	78	Killinger, T
42	Brennan, E	79	Schmidt, P., G
43	Schmidt, A., HB	80	Bankhead, E
44	Commons, HB	81	Brown, E
46	Allmon, HB	82	Saunders, E
48	Collins, QB	83	Chapman, E
51	Esposito, G	84	Hicks, E
54	Lineberger, C	85	Squire, E
55	Powell, E	86	Petrich, E
56	Numrich, C	87	Kennard, E
58	Barney, C	88	Welch, E
61	Ramsey, G	89	Kietzmann, E
62	Schoening, G		

## NEO SQUAD

12	Burk, QB	62	Kiger, DT
15	Goodsell, QB	63	O'Malley, OG
16	Wylie, QB	64	Undernehr, DG
17	Collis, QB	65	Bethel, LB
18	Gooch, DHB	66	Livesay, OT
19	Derwin, P	68	Barnett, OG
20	Redding, WB	69	Asbill, OG
21	Coker, DHB	70	MacFeely, DE
22	Thompson, DHB	71	Harlin, DE
23	West, DHB	72	Corbin, OT
24	Chaplin, LB	74	Langevin, OG
26	Angieri, WB	75	Minick, C
30	Kinnard, FB	76	Sagely, DE
60	James, LB	77	Manning, DT
33	Horn, FB	78	Stephens, DT
40	Barnett, TB	79	Newton, OT
41	Grimes, DHB	80	Cogle, OE
44	Beaulieu, TB	81	Dotson, K
46	Britto, TB	82	Barclow, DE
50	Ruby, LB	83	Wilkey, DHB
51	Lowery, LB	84	Simmons, OE
52	O'Bryan, C	85	Sasser, OE
55	Mills, C	83	Williams, DE
61	Kaubin, OG		

te you never get tired of.

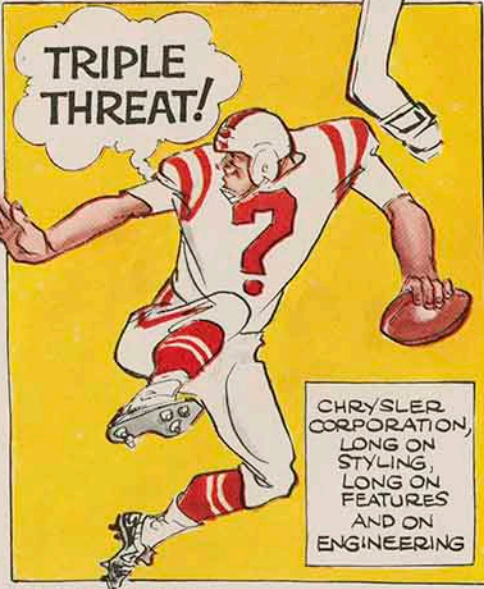


BEFORE YOU BUY, SEE YOUR CHRYSLER-PLYMOUTH OR DODGE DEALER.

...BE THE CENTER OF ATTENTION IN A NEW CAR FROM CHRYSLER CORPORATION!



WHAT A LINE!  
PLYMOUTH, DODGE, CHRYSLER, IMPERIAL, SIMCA OR SUNBEAM



CHRYSLER CORPORATION, LONG ON STYLING, LONG ON FEATURES AND ON ENGINEERING

Plymouth • Dodge • Chrysler • Imperial • Dodge Trucks • Simca • Sunbeam



**CHRYSLER CORPORATION**

SEE THE AFL IN ACTION EACH WEEK ON NBC-TV.

# REDMAN STATISTICS

No.	Name	Pos.	Weight	Height	Hometown	Class
12	Roy Burk	QB	6-1	165	Wagoner	Jr.
15	Randy Goodsell	QB	6-0	170	Tulsa	Jr.
16	Bill Wylie	QB	6-0	175	Monroeville, Pa.	Jr.
17	John Collis	QB	6-0	170	Rogers, Ark.	Fr.
18	Keith Gooch	DHB	5-11	170	Midwest City	Sr.
19	Jim Derwin	P	5-11	180	Wyandotte	Jr.
20	Ken Redding	WB	5-6	150	Choctaw	Sr.
21	Larry Coker	DHB	5-11	165	Okemah	Jr.
22	Greg Thompson	DHB	5-8	165	Tulsa	So.
23	Ronnie West	DHB	5-11	175	Shidler	Fr.
24	Charles Chaplin	LB	5-9	175	Muskogee	Sr.
26	Phil Angieri	WB	5-11	175	Tulsa	Jr.
30	Milford Kinnard	FB	5-11	195	Claremore	Fr.
60	Warren James	LB	5-10	205	Quinton	Fr.
33	Roger Horn	FB	6-3	220	Sapulpa	Fr.
40	Roy Barnett	TB	6-1	200	Wagoner	So.
41	Raymond Grimes	DHB	6-1	185	Akron, Ohio	Jr.
44	Roger Beaulieu	TB	6-4	210	Biddeford, Maine	Fr.
46	Manny Britto	TB	6-0	200	Bourne, Mass.	Jr.
50	Art Ruby	LB	6-1	215	Tulsa	Fr.
51	Harry Lowery	LB	5-9	185	Tulsa	Fr.
52	Robert O'Bryan	C	6-1	200	Jay	So.
55	Robert Mills	C	6-0	210	Oklahoma City	Sr.
61	Norman Kaubin	OG	5-11	195	Oklahoma City	Sr.
62	David Kiger	DT	6-0	210	Panama	Jr.
63	Tommy O'Malley	OG	5-11	210	Brenham, Tex.	Jr.
64	Tom Undernehr	DG	5-9	205	Tulsa	Fr.
65	David Bethel	LB	5-11	185	Muldrow	Fr.
66	Tim Livesay	OT	6-0	215	Heavener	Jr.
68	Charles Barnett	OG	6-0	200	Tulsa	Jr.
69	Ronnie Asbill	OG	5-7	200	Sallisaw	So.
70	Penei MacFeely	DE	6-0	195	Coweta	Sr.
71	Larry Harlin	DE	5-11	185	Claremore	Sr.
72	Richard Corbin	OT	6-2	210	Miami, Fla.	Sr.
74	Peter Langevin	OG	6-2	195	Biddeford, Maine	Fr.
75	Mike Minick	C	6-2	215	Bixby	So.
76	Kenny Sagely	DE	5-11	200	Van Buren, Ark.	Jr.
77	Roosevelt Manning	DT	6-5	215	Wichita Falls, Tex.	Fr.
78	Fred Stephens	DT	6-3	215	El Reno	So.
79	Clarence Newton	OT	6-3	210	Tulsa	So.
80	B. G. Cogle	OE	6-1	195	Vinita	Sr.
81	Larry Dotson	K	5-9	165	Tahlequah	Fr.
82	David Barclow	DE	5-11	200	Tulsa	Jr.
83	Don Wilkey	DHB	6-1	175	Bartlesville	So.
84	Al Simmons	OE	5-11	180	Fort Lauderdale, Fla.	Sr.
85	David Sasser	OE	6-3	185	Hugo	Fr.
88	Ned Williams	DE	6-3	225	Vian	Jr.

"OFFICIAL WATCH FOR THIS GAME—LONGINES—THE WORLD'S MOST HONORED WATCH"

FIGHT, GORILLAS, FIGHT

**Deill  
&  
Harvey  
C'nstruction  
Co., Inc.**

1302 S. Bdwy. AD 1-7160

**TAYLOR**  
Paint & Wallpaper Co.  
Benjamin Moore Paints  
109 W. 4th AD1-0530

**Townsmen  
Motel**

2408 S. Bdwy AD 1-8300

COMPLIMENTS

**Pittsburg Pottery**

30 & Walnut AD1-3920

BEST OF LUCK GORILLAS

**Sheward Realty**

301 S. Pine AD1-1160

**ALL SUCCESS  
to the  
GORILLAS**

**Silva's  
Tobacco  
Store**

Barton County  
Missouri

**Best of Luck to the Gorillas**

**Wholesale Fruits and Vegetables**

**Fadler Produce Company**

112 N. Elm

AD1-1200

## Prescriptions

- PRESCRIPTION SPECIALISTS
- QUICK DELIVERY SERVICE
- FOUNTAIN LUNCHEONETTE

The Rexall Store  
**Crowell's  
Drug Store**

4th and Bdwy. AD1-0750

## SHOES

AND ARCH SUPPORTS  
for the entire family

### "FIT"

The Most Precious  
thing we have to  
Offer

Cost You Nothing

COME SEE  
What We Have For

## YOU!

and your loved ones

# DeNeves

"Foot Comfort Specialist"  
106 W. Sixth AD1-4409

## MOTOR SUPPLY COMPANY

206 N. Locust AD1-7801

## Bitner Realty and Insurance

208 N. Locust AD1-0951

## BACK THE GORILLAS

## Rodkey's

712 N. Bdwy AD1-0740

## OTTO'S CAFE

711 N. Bdwy. AD1-6110

## Vel-Fre Tourist Court

2422 S. Bdwy. AD1-4220

## PALACE CLOTHING COMPANY

502 N. Bdwy. AD1-1612

## Centennial Life Insurance Co.

105 W. 7th AD1-6644

## YEA

## GORILLAS

## YEA

•  
**Joe Smith  
Tobacco  
Company**

409 N. Locust AD1-3610

Eat Town Talk

and

Tater Bread

▼  
**A. J. CRIPE  
Baking Co.**

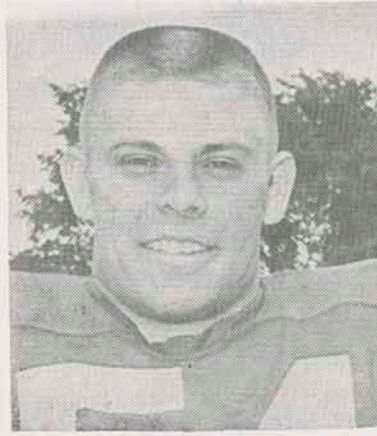
112 E. Rose AD1-2500



## MEET THE 1968 GORILLAS



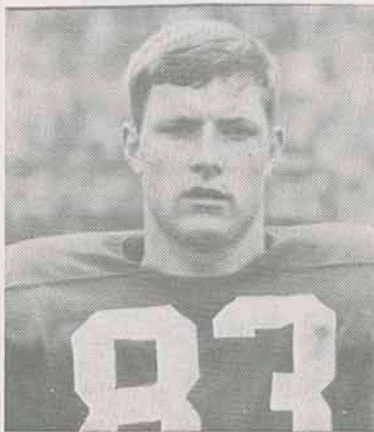
TED ALLMON  
Halfback, Pittsburg



FRED LINEBARGER  
Center, Shawnee Mission



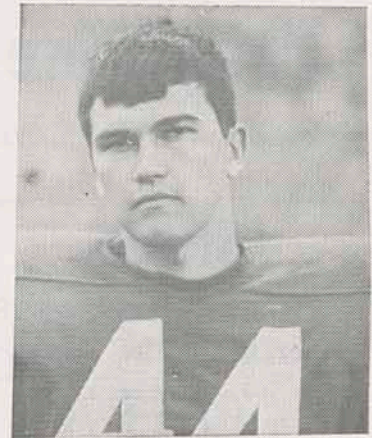
DONALD KRUG  
Guard, Jacksonville, Florida



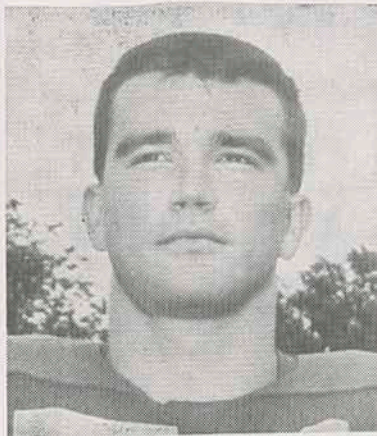
MIKE CHAPMAN  
End, Fredonia



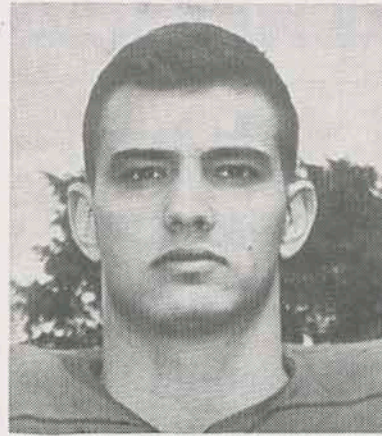
RALPH RAMSEY  
Guard, Altamont



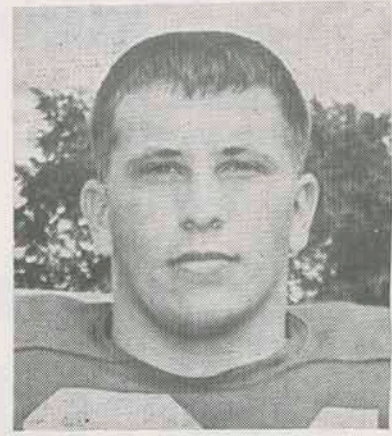
RON COMMONS  
Halfback, Lawrence



MIKE POTCHAD  
Tackle, Kansas City



DON STREETS  
End, Neodesha



LARRY BEARD  
Fullback, Pittsburg

**GO,  
GORILLAS**



**MILLER'S**

The Complete  
PHOTOGRAPHY  
STORE

506 N. Bdwy. AD1-3350

**The  
Rock of  
Gibraltar**



**The  
Prudential  
Insurance  
Company  
of America**

902 S. Bdwy AD1-0550

**Pittsburg Transfer  
and Storage Co.**  
205 N. Locust AD1-3260

**Jim's  
Steak House**  
1912 N. Bdwy AD1-5770

**Ft. Scott  
Coca Cola  
Bottling Co.**

Ft. Scott, Kansas

**A & P  
Food Store**  
813 N. Bdwy AD1-9819

**Vietti Auto  
Body Shop**  
315 E. 4th AD1-6230

**Gulf  
Oil  
Corporation**

Houston, Texas

**The  
GORILLAS**  
for football

**ANGWIN  
STANLEY**

FOR  
INSURANCE  
AND BONDS

107 E. 4th AD1-3500

**More For A  
\$**

**Smith  
St. John  
Co.**

Frederick Young,  
Representative

701 Deill AD1-3625

For The Best  
In TV  
Entertainment

Turn to

**T V 7**

**KOAM-TV**

Television City Kans.

AD1-0400

Complete Wholesale

Beauty Salon

Equipment and

Supplies

**Bottenfield's, Inc.**

503 N. Walnut

AD1-3900

Compliments of

**Hull and  
Dillon  
Packing Co.**

1220 W. Fourth

AD1-5500

**Cole's Awning  
Company**

204 W. 5th

AD1-0370

**BEST OF LUCK GORILLAS  
Superior Printing  
and Office Supply Co.**

109 N. Bdwy.

AD1-5098

We Make  
**Stockade**  
for Livestock



**Harvest  
Brand  
Inc.**

Country Club Road AD1-6700

Fight, Gorillas

**Cremer  
Monuments**

617 S. Bdwy.

AD 1-2360

Everything To Read

**FOGARTY NEWS**

418 N. Bdwy.

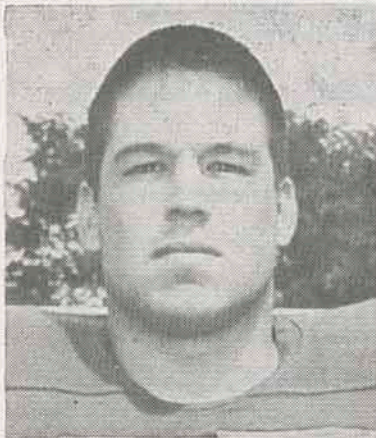
AD1-3320

**Pittsburg Garden  
of Memories**

RFD 1

AD1-9235

# MEET THE 1968 GORILLAS



**GARY MASSEY**  
Guard, Shawnee Mission



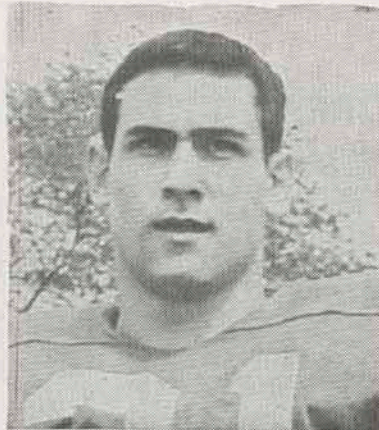
**CURTIS SQUIRE**  
End, Humbolt



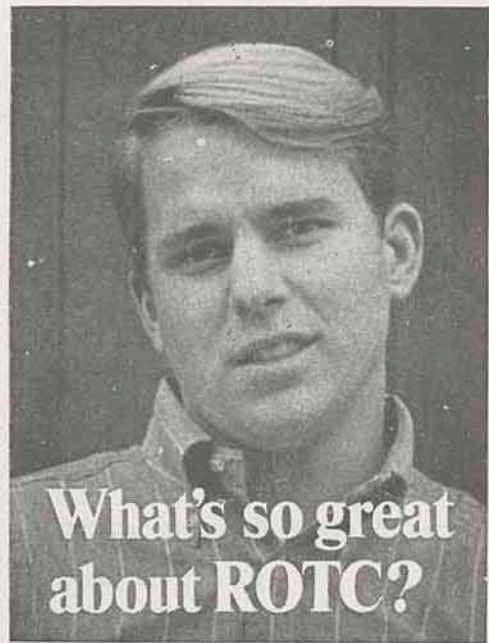
**BOB HOMER**  
Guard, Meade



**BOB NUMRICH**  
Center, Shawnee Mission



**ROD IVY**  
Quarterback, Honey Grove, Tex.



What's so great  
about ROTC?

Check 'em.

**Great opportunity.** You earn a commission while you earn your college degree. Graduate—you start at the top. Fulfill your military obligation as an Army officer. With officer's pay. Officer's privileges.

**Great advantages.** Employers prefer a college graduate with service as an officer. Pay more to get him. Because he's a trained, experienced leader. Can handle heavier responsibilities.

**Great success.** From the 5% of college men who had ROTC training have come 24% of our state governors, 28% of executives earning \$100,000 to \$325,000 per year, 10% of Congress, 15% of our ambassadors.

**Great guys.** ROTC men are campus leaders—in ROTC, athletics, extracurricular activities. And they do better scholastically than non-ROTC students.

**Great extras.** \$50 per month in junior and senior years. Scholarships for outstanding students. Free flight training at over 125 colleges. Extra social activities—military balls, honor societies, bands, rifle teams.

Any way you look at it, there's a lot more going for you when you're in ROTC.

Your future, your decision . . .

choose **Army ROTC.**

Army ROTC

CP 69

P.O. Box 12703

Philadelphia, Pa. 19134

I want to know more about Army ROTC.  
Send me your free brochure.

Name \_\_\_\_\_ Age \_\_\_\_\_

Address \_\_\_\_\_

City \_\_\_\_\_

State \_\_\_\_\_ Zip \_\_\_\_\_

Want to Sell  
Something

Quickly

Use Headlight-Sun  
WANT ADS

NEWS to You  
Every Morning

**Pittsburg  
Headlight-Sun**

701 N. Locust

AD1-2600

We Repair  
All Kinds Of  
Electric Motors

**Atkinson**

**Armature**

**Works**

116 W. 1st

AD1-6900

---

Member of the National School Supply  
and Equipment Association

**"From the Nursery to the University"**

**Bowlus School Supply, Co.**

201 E. Fifth

School Division

AD1-3450

1015 N. Broadway

Sporting Goods Division

AD1-2290

**HIT 'EM HARD  
GORILLAS!**

We believe in the Gorillas  
and Quality Service  
Come in Anytime

**Crawford  
County  
Abstract  
Company**

110 W. 6th AD1-0870

**OUR BEST  
WISHES  
FOR  
A  
SUCCESSFUL  
SEASON**

▼  
**Dunton  
Hardware**

Arcadia, Kansas

Best Wishes  
to  
THE GORILLAS

**Pepsi-Cola  
Bottling  
Company**

1211 N. Bdwy. AD1-3800

Bill Williams  
Chevrolet Co.

909 N. Bdwy AD1-2080

Mac's IGA Food  
Market

502 E. 20th AD1-1750

GO TEAM, FIGHT

F. O. Doty & Sons

122 E. First AD1-1010

Travella and DePaoli  
Harness Shop

209 N. Bdwy AD1-3690

GO TEAM, FIGHT

Gill's 66 Service

301 S. Bdwy AD1-9852

**Win**

**Gorillas**

**Win**

COMPLIMENTS OF

**RAMSAY  
Bros.**

616 N. Bdwy. AD 1-9500

**OUR BEST  
WISHES  
FOR  
A  
SUCCESSFUL  
SEASON**

**Ted's  
Coal  
Yard**

402 W. 4th AD1-6160

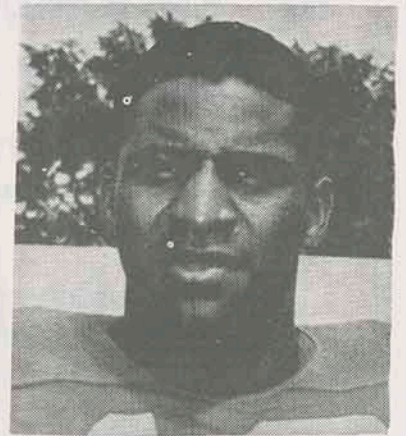
## MEET THE 1968 GORILLAS



PHIL SCHMIDT  
Guard, Caldwell



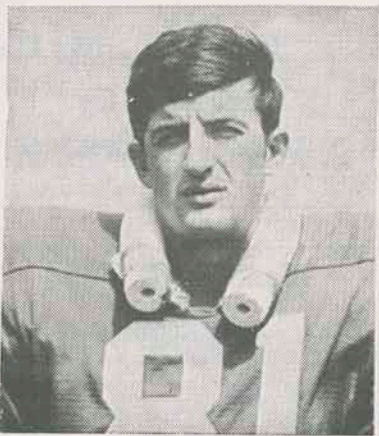
FRED SCHOENING  
Guard, Fulton, Mo.



ALPHA BIBBS  
Halfback, Kansas City, Mo.



ALBERT SCHMIDT  
Halfback, Caldwell



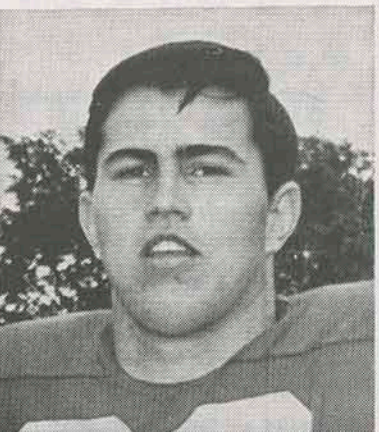
JIM BRENNAN  
End, Kansas City



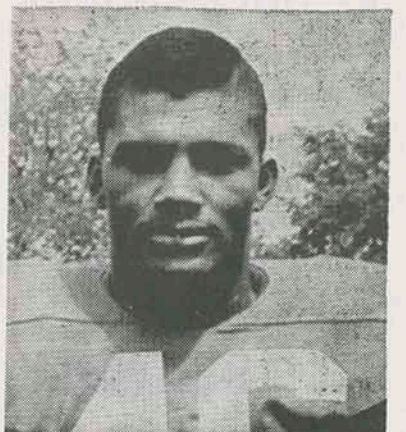
JIM MANLEY  
Guard, Fort Scott



GARY TAYLOR  
Quarterback, Joplin, Mo.



BOB HOWARD  
Fullback, Kansas City



FLOYD MAY  
Halfback, Kansas City, Mo.

# Break your beard in right.

Right now your beard is in the formative stage.

You can shave it with a razor blade like your father does. And each time you do your beard will grow back a little more difficult. Until one day shaving's no longer a chore. It's an agony.



Look no further than your father's face for proof.

But fortunately, you're catching your beard at an early age. You can break it in to be just as shaveable 10 and 20 years from now as it is today.

With a REMINGTON® shaver.

And if you think the kind of shave we're selling won't be close enough for you, you're wrong.

Our new blades are sharper than anything that's been in an electric shaver before. And there's a dial that lets you adjust them for your skin and beard.

What's more, you can dial a REMINGTON electric shaver into a sideburn trimmer.

Admittedly, it costs more to buy our electric shaver than a razor and some blades.

But it's a good investment.

These next few years will determine how you and your beard will get along for the rest of your lives. † SPERRY RAND™ ©1968, SPERRY RAND CORP.



**REMINGTON**  
ELECTRIC SHAVER DIVISION, BRIDGEPORT, CONNECTICUT



Men's and Boy's  
CLOTHING  
and  
SHOES

▼  
Coulter-  
McGuire

508-510 N. Bdwy.  
AD1-0490

Compliments of

▼  
Beatrice  
Food  
Company

108 E. 10th AD1-3170

fight  
Gorillas  
fight

•  
Pittsburg  
Laundry

110 N. Bdwy. AD1-1380

GO GORILLAS  
ALWAYS  
TOPS

KOAM  
Radio  
Dial 860

First In Pittsburg

GO  
GORILLAS  
GO

PIGGLY  
WIGGLY  
STORES

710 N. Locust AD1-1460

Savings  
Invested  
With Us  
Helps To Build  
A Better  
Pittsburg

First Federal  
Savings & Loan  
Association  
of Pittsburg

306 N. Bdwy. AD1-4040

# Besse Motor Hotel

Coffee Shop and Patio Dining Room

La Tierra Club

Banquet and Meeting Facilities for up 300

Fourth and Locust

AD1-0350

Lime and  
Fertilizer  
Pay.

•  
**Midwest  
Minerals,  
Inc.**

Girard, Kansas

BEST WISHES TO THE  
GORILLAS

•  
**Crawford  
County  
Realty**

908 S. Bdwy

AD1-4370

GO BIG RED

**Beasley's**

822 N. Bdwy.

AD1-6600

Go

Gorillas!



**HAGMAN'S**

Since 1918

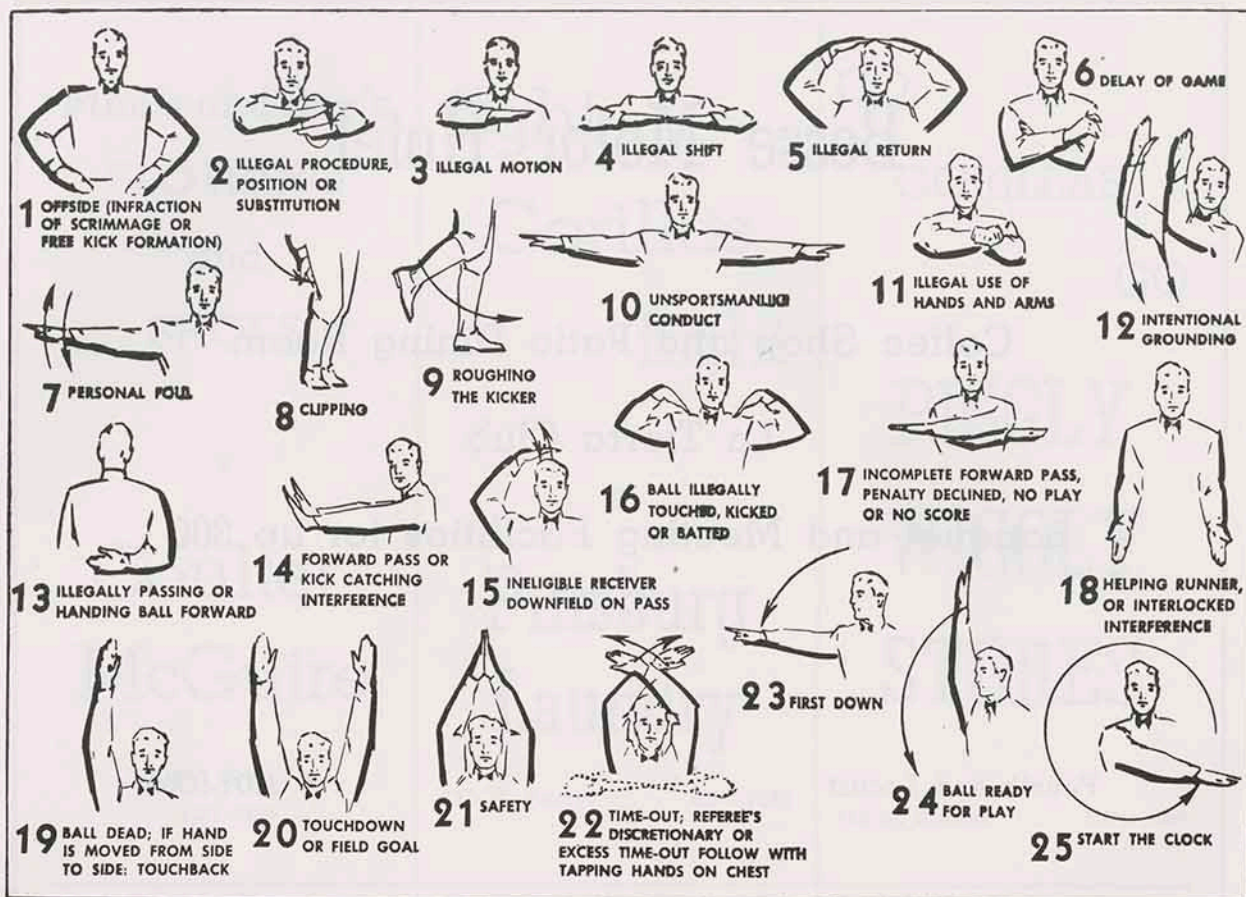
-Wholesale-

CANDY  
TOBACCO  
CIGARS

"Our 50th-Year"

Pittsburg

231-8000



**1. OFFSIDE** by either team; Violation of scrimmage or free kick formation; Encroachment on neutral zone—Loss of Five Yards.

**2. ILLEGAL PROCEDURE, POSITION OR SUBSTITUTION**—Putting ball in play before Referee signals "Ready-for-Play"; Failure to complete substitution before play starts; Player out-of-bounds when scrimmage begins, or on free kick formation; Failure to maintain proper alignment of offensive team when ball is snapped; False start or simulating start of a play; Taking more than two steps after Fair Catch is made; Player on line receiving snap; Free kick out-of-bounds—Loss of Five Yards.

**3. ILLEGAL MOTION**—Offensive player illegally in motion when ball is snapped—Loss of Five Yards.

**4. ILLEGAL SHIFT**—Failure to pause one full second in shift play—Loss of Five Yards.

**5. ILLEGAL RETURN**—Infraction of substitution rule—Loss of Five Yards.

**6. DELAY OF GAME**—Consuming more than 25 seconds in putting the ball in play after it is declared ready-for-play; Failure to remove injured player for whom excess timeout was granted; Crawling—Loss of Five Yards. Team not ready to

play at start of either half—Loss of 15 Yards.

**7. PERSONAL FOUL**—Tackling or blocking defensive player who has made fair catch; Piling on; Hurdling; Tripping; Grasping face mask of opponent; Tackling player out-of-bounds, or running into player obviously out of play; Loss of 15 Yards. (Flagrant offenders will be disqualified.)

**8. CLIPPING**—Loss of 15 Yards.

## PENALTIES

**9. ROUGHING THE KICKER** or holder—Loss of 15 Yards.

**10. UNSPORTSMANLIKE CONDUCT**—Striking an opponent with fist, forearm, elbow or locked hands; Kicking or kneeling—Loss of 15 Yards (offenders will be disqualified); Violation of rules during intermission; Illegal return of disqualified player; Coaching from side lines; Invalid signal for Fair Catch; Persons illegally on field—Loss of 15 Yards. (Flagrant offenders will be disqualified.)

**11. ILLEGAL USE OF HANDS AND ARMS** by offensive or defensive player—Loss of 15 Yards.

**12. INTENTIONAL GROUNDING** of forward pass—Loss of Five Yards from spot of pass Plus Loss of Down.

**13. ILLEGAL FORWARD PASS OR ILLEGALLY HANDING BALL FORWARD**—Loss of Five Yards from spot of foul Plus Loss of Down.

**14. FORWARD PASS OR KICK CATCHING INTERFERENCE**—Interference with opportunity of player of receiving team to catch a kick—Loss of 15 yards. Interference by member of offensive team on forward pass—Loss of 15 Yards Plus Loss of Down. Interference by defensive team on forward pass—Passing Team's Ball at Spot of Foul and First Down.

**15. INELIGIBLE RECEIVER DOWNFIELD ON PASS**—Loss of 15 Yards.

**16. BALL ILLEGALLY TOUCHED, KICKED OR BATTED**—Forward pass being touched by ineligible receiver beyond the line of scrimmage—Loss of 15 Yards from Spot of Preceding Down and Loss of a Down. Eligible pass receiver going out-of-bounds and later touching a forward pass—Loss of Down; Illegally kicking the ball—Loss of 15 Yards; Illegally kicking or batting a free ball—Offended team's ball at Spot of Foul.

**17. INCOMPLETE FORWARD PASS**—Penalty declined; No play or no score.

**18. HELPING THE RUNNER, or interlocked interference**—Loss of 15 Yards.

# GORILLA BOOSTERS

The following firms and individuals have cooperated with the Athletic Council in making this program and the 1-page ad in the Pittsburg Headlight-Sun possible. Their spirit and friendliness as well as all advertisers represented in this program are worthy of your support and patronage.

Abe's Flowers	Campbell "66" Express	J. C. Penney Co.
Abbe Deruy Maytag Co.	Centennial Life Insurance	Gutteridge Pharmacy
Angwin Blair Insurance Agency	City National Bank of Pittsburg	Plaza Bakery
Arma Elevator	Coca Cola	Palace Clothing Co.
August Rua Insurance Agency	Cook Paint and Varnish	Pepsi-Cola Bottling Co.
Baker Printing, Inc.	College Bakery and Donut Shop	Pla-Mor Smoke House
Beasley Tire Co.	Cinema-Pittsburg Drive-In	Seymours
Beitzinger Hardware and Furniture Co.	Meadow Gold Dairy	Smith Funeral Home
Besse Motor Hotel	Midwest Auto Store	Jones Store
Bob's Textile Care Service	Mackie-Clemens Fuel Co.	KG&E The Electric Co.
Burger Chef	Moore's Furniture	KSEK
Weeks-Wilbert Realty	Montgomery Ward and Co.	Ku Ku Burger
The Pittsburg Headlight-Sun	Crawford County Realty	Lindburg Drug, Inc.
Hull and Dillon Packing Co.	Deruy-Albertini Furniture Co.	1 Hour Martinizing
Gas Service	Dryer's Shoe Store	Miller's Studio
Gibson's Discount Store	Ellsworth Funeral Home	National Bank of Pittsburg
McCall Shoe Store	First State Bank of Pittsburg	Naylor-Quinn Funeral Home
Bowlus School Supply	The Appliance Center	Oldham's Dairy
Bud's Jewelry (Bud Benelli)	Gragg Typewriter Co.	Otto's Cafe
Brenner Mortuary	Grant Oil Co.	Walt Panneck Men's Wear
Clyde's Music, Inc.	General Machinery and Supply Co.	Thomas Frame and Wheel Aligning
Flowers by Gale		W. A. Thomas Supply Co.
		Tower Ball Room
		Bill Williams Chevrolet
		F. W. Woolworth Co.

The Athletic Council appointed by the President is charged with the responsibility for carrying out the Athletic program of the College. They have many responsibilities such as stadium decorations, arrangements for concessions, tickets, seat reservations, press box, guards, half-time activities, etc.

Athletic Director Carnie Smith is chairman of the committee responsible for the Gorilla Booster and Richard I. Jacques is the editor. Refer publication matters to the Athletic Council, Phone AD 1-7000.

GO BIG RED

**Hofer Truck Sales**

20th & Bypass AD1-5210

Compliments of

**Pla-Mor Smoke House**

420 N. Bdwy

AD1-9767

# Z/28 Camaro



**Putting you first vaaarrrrrroooooooooomm**

**keeps us first.**



*Special offer from the Chevrolet Sports Art Collection:  
18" x 24" prints of four Arthur Friberg paintings  
portraying the 100 years of college football:  
(1) The First Game; (2) Knute Rockne—The Coach;*

*(3) Howell to Hutson—The Passing Game; (4) O. J. Runs for Daylight.  
Send \$3.00 in cash, check or money order to L. G. Balfour  
Company, P.O. Box 11608, Salt Lake City, Utah 84111.*