

Pittsburg State University

Pittsburg State University Digital Commons

Football Programs, 1916-2013

University Archives

10-12-1968

University of Nebraska of Omaha vs. Kansas State Teachers College

Kansas State Teachers College

Follow this and additional works at: <https://digitalcommons.pittstate.edu/footb>

Recommended Citation

Kansas State Teachers College, "University of Nebraska of Omaha vs. Kansas State Teachers College" (1968). *Football Programs, 1916-2013*. 55.
<https://digitalcommons.pittstate.edu/footb/55>

This Book is brought to you for free and open access by the University Archives at Pittsburg State University Digital Commons. It has been accepted for inclusion in Football Programs, 1916-2013 by an authorized administrator of Pittsburg State University Digital Commons. For more information, please contact digitalcommons@pittstate.edu.

0
265710
10-12
C.1



THE COLLEGE GAME

OFFICIAL PROGRAM • THIRTY-FIVE CENTS

Salute to the U.S. Olympic Team

OCTOBER 12, 1968 BRANDENBURG STADIUM

PITTSBURG U. of NEB., OMAHA



GORILLA BOOSTERS

American Legion

Amvets

B. P. O. Elks No. 412

T. W. Bath

Dr. James Bena

Dr. C. H. Benage

David P. Benelli

Dr. Vernon Berkey

Dr. K. J. Bierlein

E. L. Bournonville

Rex Bowers

Dr. James L. Buckles

Orval Close

Dave Cunningham

Dr. C. W. Erickson

Paul W. Fisher

Philip Glick

Don Gutteridge

Flo Holman

Claude Huffman

Dr. John Kazmerski

Al Kendall

Randall Kennon

Garry W. Lassman

Dr. Paul B. Leffler

Forest Leon

Lions Club

Dr. D. J. Lyons

Morris Matuska

Edward T. McNally

Dr. Robert Menchetti

Dr. Earl Miller

F. G. Morris

Dr. S. B. Muller

Don Musser

Perry Owsley

Randall D. Palmer

Robert Pate

Dr. George W. Pogson

Arthur Rader

Dr. W. G. Rinehart

Arthur Robb

Rotary Club

Albert Scherff

H. L. Spuin

Dr. L. L. Stumfoll

Nelson E. Toburen

J. J. Towner

John B. Towner

Veterans of Foreign Wars

Guy Von Schrittz

Walker & Phalen

Simeon Webb

Donald Webber

S. P. Wesonig

Paul L. Wilbert

Dr. D. H. Wood

You Can Order
from our Big

CATALOG

as well as
SHOP

at

J. C.
Penney

523 N. Bdwy

AD1-2300

THE Gorilla Booster

Official Athletic Program of Kansas State College of Kansas

Price Thirty-Five Cents Includes Tax

HOME		AWAY	
Pittsburg 27	S. W. Mo. State 20	Pittsburg 3	Central Okla. 29
Oct. 12	Omaha University	Pittsburg 7	Southern Colo. 10
Oct. 26	KSTC, Emporia	Pittsburg 15	N. E. Mo. State 18
Nov. 9	Missouri Southern	Oct. 19	Washburn University
Nov. 16	N. E. Okla. State	Nov. 2	Ft. Hays State

Kansas State College of Pittsburg opens the 1968 Central Intercollegiate Conference race tonight against the University of Nebraska of Omaha Indians in Parents Night activities at Brandenburg Stadium. Tonight's game marks the beginning of the end of the CIC, as the new Rocky Mountain Athletic Conference will officially open with the 1968-69 basketball season. The Gorillas enter the game with a 1-3 record fresh from last weekend's 27-20 victory over Southwest Missouri State. Omaha University, now 0-3, also is making its first conference appearance of the season as the Indians travel to Pittsburg in search of their first win of the season. Indian Coach Al Caniglia in his ninth season as Omaha's head coach, returns 31 lettermen from last season's 7-3 conference championship team. Last season, the Gorillas lost a 29-25 thriller in Omaha. Pittsburg leads in wins, 5-4, in the nine year-old series that dates back to 1959.

GORILLA COACHING STAFF

Tom Lester, Head Coach
Joe Murphy, Ass't Coach
Bill Samuels, Ass't Coach
Alferd Ortolani, Trainer
Willie Adkins, Staff Assistant
Jerry Archer, Staff Assistant
Billy Rink, Staff Assistant
Phil Vogrin, Staff Assistant

INDIAN COACHING STAFF

Al F. Caniglia, Head Coach
Don Watchron, Assistant Coach
Don Benning, Assistant Coach
Carl Meyers, Assistant Coach

The front cover was designed and printed by Spencer Advertising Company, Inc., 271 Mad. Ave., N. Y.
Represented for National Advertising by **Spencer Advertising Company, Inc.**, 271 Mad. Ave., New York City

Printed by Printing Division of the School of Technology

Men's and Boy's
CLOTHING
and
SHOES

▼
Coulter-
McGuire

508-510 N. Bdwy.
AD1-0490

Compliments of

▼
Beatrice
Food
Company

108 E. 10th AD1-3170

fight
Gorillas
fight

•
Pittsburg
Laundry

110 N. Bdwy. AD1-1380

GO GORILLAS
ALWAYS
TOPS

KOAM
Radio
Dial 860

First In Pittsburg

GO
GORILLAS
GO

PIGGLY
WIGGLY
STORES

710 N. Locust AD1-1460

Savings
Invested
With Us
Helps To Build
A Better
Pittsburg

First Federal
Savings & Loan
Association
of Pittsburg

306 N. Bdwy. AD1-4040

Besse Motor Hotel

Coffee Shop and Patio Dining Room

La Tierra Club

Banquet and Meeting Facilities for up to 300

Fourth and Locust

AD1-0350

Lime and
Fertilizer
Pay.

•
**Midwest
Minerals,
Inc.**

Girard, Kansas

BEST WISHES TO THE
GORILLAS

•
**Crawford
County
Realty**

908 S. Bdwy

AD1-4370

GO BIG RED

Beasley's

822 N. Bdwy.

AD1-6600

Go

Gorillas!



HAGMAN'S

Since 1918

-Wholesale-

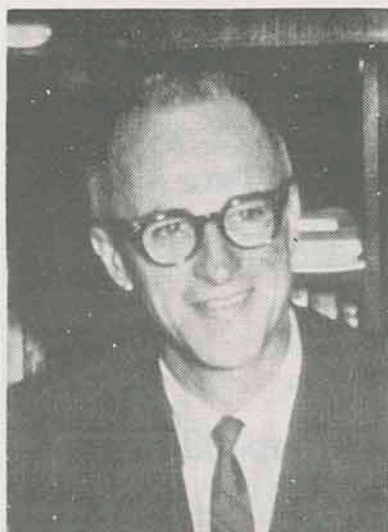
CANDY
TOBACCO
CIGARS

"Our 50th-Year"

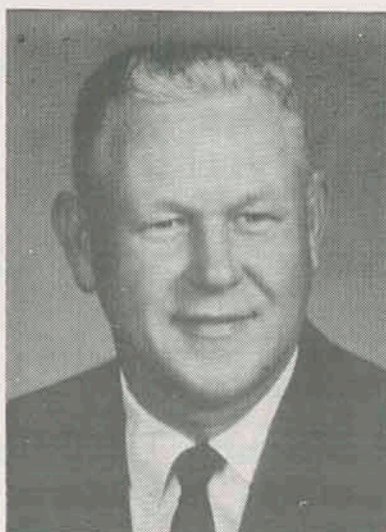
Pittsburg

231-8000

WHO'S WHO AT PITTSBURG . . .



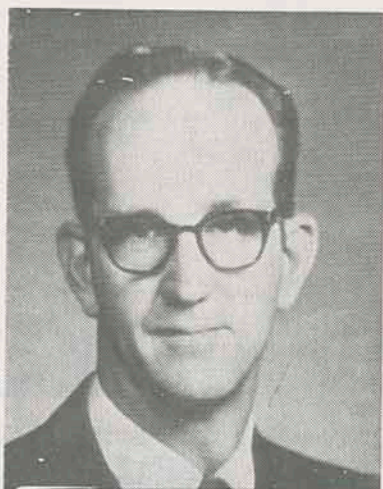
GEORGE F. BUDD
President



CARNIE SMITH
Director of Athletics



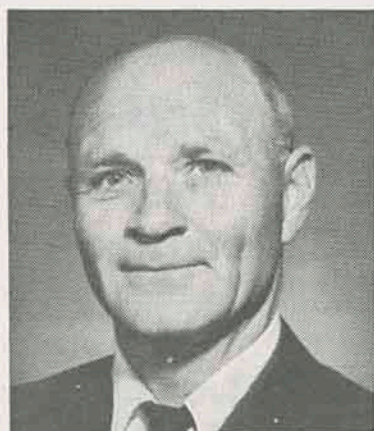
PRENTICE GUDGEN
Chairman of Phys. Ed Dept.



TOM LESTER
Head Coach



ALFRED ORTOLANI
Trainer



Joe Murphy
Assistant Coach

Sharing in the credit for KSC's successful football teams is Joseph P. Murphy, line coach. Coming to the College with former Head Coach Carnie Smith, he is in his twentieth season with the Gorillas.

Murphy attended the University of Illinois playing under Bob Zupke. He transferred to KSC as a junior and was All-CIC guard in 1933, his Senior year. After playing pro ball with the St. Louis Gunners he returned to KSC in 1936 to do graduate work and to serve as assistant football coach to Charlie Morgan. Murphy coached and taught at Minden, Mo., 1937-38; Leavenworth, 1938-41; Parsons high school, 1946; and Parsons junior college, 1947-48.



Bill Samuels
Assistant Coach

In his second year as a member of the Gorilla coaching staff, Bill Samuels joined the KSC ranks in 1967. He came to the College from Riverton High School where he was assistant football coach since 1964. Previously he was a helicopter pilot with Petroleum Helicopters in Lafayette, La., from 1962-63 and he was a naval aviator with the U.S. Marine Corps from 1958 to 1962. Samuels earned a B.S. degree in 1958 and the M.S. degree in 1964, both at Pittsburg.

Samuels, a former athlete at KSC, was starting quarterback and kicked the winning extra point in the Gorillas' 27-26 NAIA championship Holiday Bowl game with Hillsdale at St. Petersburg, Fla., in 1957.

OFFICIAL WATCH FOR THIS GAME



LONGINES THE WORLD'S MOST HONORED WATCH®

10 world's fair grand prizes
28 gold medals



Longines watches are recognized as OFFICIAL for timing world championships and Olympic sports in all fields throughout the world.



Longines Ultra-Chron #8205, automatic with calendar, \$175.
Other Ultra-Chron Models, \$115 to \$595.

the fabulous, new LONGINES ULTRA-CHRON®

Guaranteed Accurate To A Minute A Month*

The ultimate personal chronometer, guaranteed accurate to a minute a month—a mean average of 2 seconds per day. Ultra-Chron tells the date, hour, minute, second. Never needs batteries. Winds automatically while you wear it. All Proof® construction defeats water, dust, shock, magnetism. At Longines-Wittnauer Franchised Jewelers, coast-to-coast.

*Your Longines-Wittnauer Franchised Jeweler will adjust your Ultra-Chron to this accuracy, if necessary. Guarantee is for one year.

LONGINES-WITNAUER WATCH CO.
NEW YORK • MONTREAL • GENEVA
Maker of Watches Of The Highest Character
For Over A Century

Want to Sell
Something

Quickly

Use Headlight-Sun
WANT ADS

NEWS to You
Every Morning

Pittsburg
Headlight-Sun

701 N. Locust

AD1-2600

We Repair
All Kinds Of
Electric Motors

Atkinson
Armature
Works

116 W. 1st

AD1-6900

Member of the National School Supply
and Equipment Association

"From the Nursery to the University"

Bowlus School Supply, Co.

201 E. Fifth

School Division

AD1-3450

1015 N. Broadway

Sporting Goods Division

AD1-2290

HIT 'EM HARD GORILLAS!

We believe in the Gorillas
and Quality Service
Come in Anytime

Crawford County Abstract Company

110 W. 6th AD1-0870

OUR BEST
WISHES
FOR
A
SUCCESSFUL
SEASON



Dunton Hardware

Arcadia, Kansas

Best Wishes
to
THE GORILLAS

Pepsi-Cola Bottling Company

1211 N. Bdwy. AD1-3800

Bill Williams
Chevrolet Co.

909 N. Bdwy AD1-2080

Mac's IGA Food
Market

502 E. 20th AD1-1750

GO TEAM, FIGHT

F. O. Doty & Sons

122 E. First AD1-1010

Travella and DePaoli
Harness Shop

209 N. Bdwy AD1-3690

GO TEAM, FIGHT

Gill's 66 Service

301 S. Bdwy AD1-9852

Win

Gorillas

Win

COMPLIMENTS OF

RAMSAY Bros.

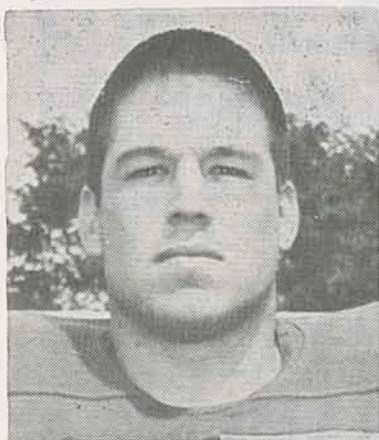
616 N. Bdwy. AD 1-9800

OUR BEST
WISHES
FOR
A
SUCCESSFUL
SEASON

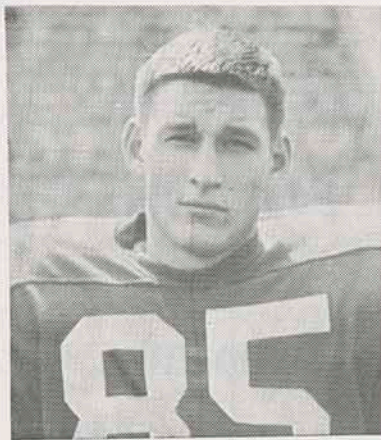
Ted's Coal Yard

402 W. 4th AD1-6160

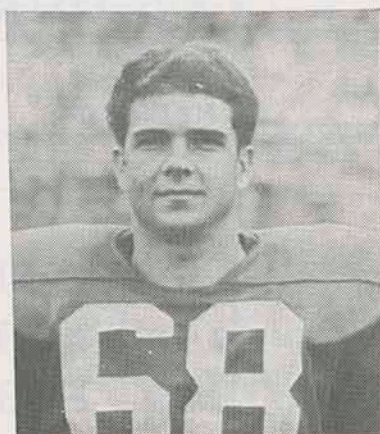
MEET THE 1968 GORILLAS



GARY MASSEY
Guard, Shawnee Mission



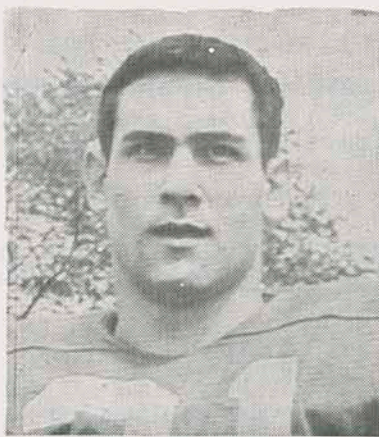
CURTIS SQUIRE
End, Humbolt



BOB HOMER
Guard, Meade



BOB NUMRICH
Center, Shawnee Mission



ROD IVY
Quarterback, Honey Grove, Tex.

What's so great about ROTC?

Check 'em.

☐ **Great opportunity.** You earn a commission while you earn your college degree. Graduate—you start at the top. Fulfill your military obligation as an Army officer. With officer's pay. Officer's privileges.

☐ **Great advantages.** Employers prefer a college graduate with service as an officer. Pay more to get him. Because he's a trained, experienced leader. Can handle heavier responsibilities.

☐ **Great success.** From the 5% of college men who had ROTC training have come 24% of our state governors, 28% of executives earning \$100,000 to \$325,000 per year, 10% of Congress, 15% of our ambassadors.

☐ **Great guys.** ROTC men are campus leaders—in ROTC, athletics, extracurricular activities. And they do better scholastically than non-ROTC students.

☐ **Great extras.** \$50 per month in junior and senior years. Scholarships for outstanding students. Free flight training at over 125 colleges. Extra social activities—military balls, honor societies, bands, rifle teams.

Any way you look at it, there's a lot more going for you when you're in ROTC.

Your future, your decision...

choose **Army ROTC.**

Army ROTC
P.O. Box 12703
Philadelphia, Pa. 19134

CP 69

I want to know more about Army ROTC.
Send me your free brochure.

Name _____ Age _____

Address _____

City _____

State _____ Zip _____

**GO,
GORILLAS**



MILLER'S

The Complete
PHOTOGRAPHY
STORE

506 N. Bdwy. AD1-3350

**The
Rock of
Gibraltar**



**The
Prudential
Insurance
Company
of America**

902 S. Bdwy AD1-0550

**Pittsburg Transfer
and Storage Co.**

205 N. Locust AD1-3260

**Jim's
Steak House**

1912 N. Bdwy AD1-5770

**Ft. Scott
Coca Cola
Bottling Co.**

Ft. Scott, Kansas

**A & P
Food Store**

813 N. Bdwy AD1-9819

**Vietti Auto
Body Shop**

315 E. 4th AD1-6230

**Gulf
Oil
Corporation**

Houston, Texas

**The
GORILLAS
for football**

**ANGWIN
STANLEY**

**FOR
INSURANCE
AND BONDS**

107 E. 4th AD1-3500

**More For A
\$**

**Smith
St. John
Co.**

Frederick Young,
Representative

701 Deill AD1-3625

For The Best
In TV
Entertainment
Turn to

T V 7

KOAM-TV

Television City Kans.

AD1-0400

Complete Wholesale
Beauty Salon
Equipment and
Supplies

Bottenfield's, Inc.

503 N. Walnut

AD1-3900

Compliments of

**Hull and
Dillon
Packing Co.**

1220 W. Fourth

AD1-5500

**Cole's Awning
Company**

204 W. 5th

AD1-0370

**BEST OF LUCK GORILLAS
Superior Printing
and Office Supply Co.**

109 N. Bdwy.

AD1-5098

We Make
Stockade
for Livestock



**Harvest
Brand
Inc.**

Country Club Road AD1-6700

Fight, Gorillas
**Cremer
Monuments**

617 S. Bdwy.

AD 1-2380

Everything To Read

FOGARTY NEWS

418 N. Bdwy.

AD1-3320

**Pittsburg Garden
of Memories**

RFD 1

AD1-9235

Athletics, Sportsmanship, and Education

Parents Night, 1968

We welcome the parents of our students tonight. We are glad to have you here, and hope that you will leave our campus and the Pittsburg community with the same friendliness that you will find on campus and among our Pittsburg citizens. Pittsburg has always been a friendly place. We are proud of Pittsburg and KSC of Pittsburg. Your sons and daughters are now a part of this spirit, and we want you also to be a part of it.

Tonight marks the beginning of the last season in the Central Inter-Collegiate Conference. The league has broken up, and we have new commitments for the future.

We wish to commend the sons and daughters of KSC for perpetuating the spirit of fair play and true sportsmanship at all athletic events on our campus. Such conduct on the part of our students is a standing tradition at Pittsburg where our townspeople and the Pittsburg community support our Gorillas enthusiastically! A worthy opponent has always been respected, treated as a guest, although a little unwelcome when he gets too far ahead, which is not often.

The people of Pittsburg and our entire college community has long been a warm and friendly crowd at athletic events. We hope that the parents, too, will feel this pervading warmth and friendliness.

Intercollegiate athletics is an integral part of the total education at KSC. Our teams play hard, to win when they can, and many have brought honor and prestige to our campus. Many have lost, too, before understanding audiences. Our coaches are high type individuals who are teachers first, coaches second. They "live and die" with the players, get closer to the young men who play the game, and have a relationship of influence upon young lives that they consider a privilege and an obligation. They make certain demands upon your sons, teach them the meaning of discipline, help them improve their techniques by practice while learning the ingredients of teamwork, loyalty, cooperation, and responsibility. Such learnings in a real-life situation compared to a laboratory-controlled learning situation are probably more meaningful because of the time involved in consolidating the learning processes.

Millions watch athletic contests each week, and we often wonder why. Is it possible that athletics today symbolize characteristics in our society that do not exist to the same extent they did in times past? As we watch a football game, for example, we see law and order with justice dispensed by officials who must act fairly and honestly before audiences. We see responsibility and order by the teams in action, we witness teamwork by players who were selected because they are **best** at their job, and they must produce on that job regardless of who they are or who their ancestors were; they are judged entirely upon **their** merit. And this judgment comes every week by the jury in the stadium, for the player and the officials.

Thus, the college athlete **learns** that discipline **can** be teamwork and responsibility. He learns, too, that discipline, authority of the proper type, gives authority, direction and purpose to his life for those who take advantage of the learning situation.

Now, back to **SPORTSMANSHIP** as it particularly applies to KSC, Pittsburg and community. Continue to reflect the spirit and tradition of our crowds, especially with reference to attitudes. It is hoped that you will continue along the familiar lines for all sports at KSC:

- 1) Strive to never violate your private convictions under the emotional stress of the game. Do not justify or rationalize your laxity because of your enthusiasm.
- 2) Give your influence to encourage the highest courtesy toward officials, coaches and athletes who are guests of our institution.
- 3) Maintain decorum and an adult attitude in all matters pertaining to the athletic environment.
- 4) Show your appreciation of the good play, by opponent or home team; applaud the fair play of both teams.
- 5) And remember that the contest is only a game, not a matter of life or death.

FIGHT, GORILLAS, FIGHT

**Deill
&
Harvey
C'nstruction
Co., Inc.**

1302 S. Bdwy.

AD 1-7160

**TAYLOR
Paint & Wallpaper Co.**

Benjamin Moore Paints

109 W. 4th

AD1-0530

**Townsmen
Motel**

2408 S. Bdwy

AD 1-8300

COMPLIMENTS

Pittsburg Pottery

30 & Walnut

AD1-3920

BEST OF LUCK GORILLAS

Sheward Realty

301 S. Pine

AD1-1160

ALL SUCCESS

**to the
GORILLAS**

**Silva's
Tobacco
Store**

Barton County
Missouri

Best of Luck to the Gorillas

Wholesale Fruits and Vegetables

Fadler Produce Company

112 N. Elm

AD1-1200

Prescriptions

- PRESCRIPTION SPECIALISTS
- QUICK DELIVERY SERVICE
- FOUNTAIN LUNCHEONETTE

The Rexall Store

Crowell's Drug Store

4th and Bdwy. AD1-0750

SHOES

AND ARCH SUPPORTS
for the entire family

"FIT"

The Most Precious
thing we have to
Offer

Cost You Nothing

COME SEE
What We Have For

YOU!

and your loved ones

DeNeve's

"Foot Comfort Specialist"
106 W. Sixth AD1-0409

MOTOR SUPPLY COMPANY

206 N. Locust AD1-7801

Bitner Realty and Insurance

208 N. Locust AD1-0951

BACK THE GORILLAS

Rodkey's

712 N. Bdwy AD1-0740

OTTO'S CAFE

711 N. Bdwy. AD1-6110

Vel-Fre Tourist Court

2422 S. Bdwy. AD1-4220

PALACE CLOTHING COMPANY

502 N. Bdwy. AD1-1612

Centennial Life Insurance Co.

105 W. 7th AD1-6644

YEA

GORILLAS

YEA

Joe Smith Tobacco Company

409 N. Locust AD1-3610

Eat Town Talk

and

Tater Bread



A. J. CRIPE

Baking Co.

112 E. Rose AD1-2500

GORILLA STATISTICS

No.	Name	Pos.	Weight	Height	Hometown	Class
10	Alpha Bibbs	HB	170	5-8	Kansas City, Mo.	Jr.
11	Jerry Ward	HB	165	5-9	Kearney, Mo.	Fr.
12	Craig Pearson	HB	165	5-9	Shawnee Mission	Fr.
14	Don Collins	QB	165	5-11	Webb City, Mo.	Fr.
21	Rod Ivy	QB	185	6-0	Honey Grove, Tex.	Sr.
22	Rogers Smith	QB	160	5-10	Bellevue, Neb.	So.
23	Gregory Schmidt	HB	185	6-0	Andale	Fr.
24	John Reynolds	QB	165	5-10	Kansas City	Fr.
27	Gary Taylor	QB	170	6-0	Joplin, Mo.	Fr.
32	Dave Schmidt	HB	162	5-9	Kansas City, Mo.	Fr.
33	Robert Barrett	FB	190	6-0	Fredonia	So.
34	Larry Beard	FB	215	6-1	Pittsburg	Sr.
35	Floyd May	FB	170	5-9	Kansas City, Mo.	Jr.
36	Bob Howard	FB	215	6-1	Kansas City	Jr.
42	Jim Brennan	E	195	6-0	Kansas City	So.
43	Albert Schmidt	HB	195	6-1	Caldwell	Fr.
44	Ron Commons	HB	165	6-0	Lawrence	Fr.
46	Ted Allmon	HB	165	5-9	Pittsburg	Jr.
48	Mark Kenney	HB	150	5-10	Shawnee Mission	Fr.
51	Michael Powell	E	189	6-2	Kansas City, Mo.	Fr.
54	Fred Linebarger	C	200	5-10	Shawnee Mission	Sr.
55	Larry Mroz	C	200	6-0	Coweta, Okla.	Jr.
56	Bob Numrich	C	180	5-10	Shawnee Mission	Jr.
58	Roger Barney	C	195	5-10	Olathe	Sr.
61	Ralph Ramsey	G	180	5-11	Altamont	Fr.
62	Fred Schoening	G	195	5-9	Fulton, Mo.	Jr.
63	Greg Wells	G	215	5-10	Fredonia	So.
64	Jim Manley	G	200	5-10	Fort Scott	Fr.
65	Don Krug	G	225	5-7	Jacksonville, Fl.	Jr.
66	Don Barcus	G	175	5-11	Oswego	Fr.
67	Gary Massey	G	200	5-10	Shawnee Mission	Sr.
68	Bob Homer	G	180	5-10	Meade	Fr.
69	Jack Milligan	G	180	5-11	Overland Park	Fr.
71	Dick Adams	T	195	6-0	Kansas City	So.
72	Charles Broyles	T	235	6-2	Mulberry	Sr.
73	Gene Schimpf	T	240	6-4	Marion	Jr.
74	Mike Potchad	T	240	6-6	Kansas City	So.
75	Kris Petrich	E	170	6-0	Warner Robbins, Ga.	Fr.
76	Tom Hicks	E	175	6-1	Overland Park	Fr.
77	Steve Esposito	G	180	5-7	Elmont, N. Y.	Fr.
78	Charles Killinger	T	220	5-9	Joplin, Mo.	So.
79	Phil Schmidt	G	210	6-0	Caldwell	Fr.
80	Greg Bankhead	E	155	5-9	Kansas City	Fr.
81	Andy Brown	E	180	6-0	Overland Park	Fr.
82	John Saunders	E	196	6-0	Lawrence	So.
83	Mike Chapman	E	175	6-0	Fredonia	Fr.
84	Don Streets	E	186	6-1	Neodesha	Sr.
85	Curtis Squire	E	187	5-11	Humboldt	So.
86	Mike Smith	E	210	6-3	Uniontown	Fr.
87	Tom Kennard	E	170	6-0	Shawnee Mission	So.
88	Ron Welch	E	195	6-0	Kearney, Mo.	Fr.
89	Ron Kietzmann	E	210	6-0	Kansas City	So.

"OFFICIAL WATCH FOR THIS GAME—LONGINES—THE WORLD'S MOST HONORED WATCH"



BEFORE YOU
BUY, SEE YOUR
CHRYSLER-
PLYMOUTH
OR DODGE
DEALER.

...BE THE CENTER
OF ATTENTION
IN A NEW CAR
FROM CHRYSLER
CORPORATION!



WHAT A
LINE!

PLYMOUTH, DODGE,
CHRYSLER,
IMPERIAL,
SIMCA OR
SUNBEAM

THEY
GRAB
YOU!



TRIPLE
THREAT!



CHRYSLER
CORPORATION,
LONG ON
STYLING,
LONG ON
FEATURES
AND ON
ENGINEERING

Plymouth • Dodge • Chrysler • Imperial • Dodge Trucks • Simca • Sunbeam



**CHRYSLER
CORPORATION**

SEE THE AFL IN ACTION EACH WEEK ON NBC-TV.



Coca-Cola

TRADE-MARK®

Coca-Cola

Coke

Coca-Cola

Coke has the taste

TRADE-MARK®

KANSAS STATE

Probable Offensive Lineup

83	MIKE CHAPMAN	LE
74	MIKE POTCHAD	LT
62	FRED SCHOENING	LG
56	BOB NUMRICH	C
67	GARY MASSEY	RG
73	GENE SCHIMPF	RT
85	CURTIS SQUIRE	RE
22	ROGERS SMITH	QB
35	FLOYD MAY	LH
43	ALBERT SCHMIDT	RH
36	BOB HOWARD	FB

U.N. - OMAHA

Probable Offensive Lineup

87	JOHN DICE	SE
71	PAT RYAN	LT
68	RICH SCHUCKMAN	LG
51	FERNANDO MESA	C
69	DAN KLEPPER	RG
75	ED JACKSON	RT
85	STAN STANDIFER	TE
12	ROCCO GONNELLA	QB
34	RON SAYERS	RB
31	PAT SMAGACZ	FB
89	TOM McKERNAN	FLK

—OFFICIALS—

Referee.....	Quincy Seymour	Head Linesman.....	Jerry Kleinsmith
Umpire.....	Wendell Wingler	Field Judge.....	Maclyn Haynes

KSC SQUAD

10	Bibbs, HB	63	Wells, G
11	Ward, HB	64	Manley, G
12	Pearson, HB	65	Krug, G
14	Collins, QB	66	Barcus, G
21	Ivy, QB	67	Massey, G
22	Smith, R., QB	68	Homer, G
23	Schmidt, G., HB	69	Milligan, G
24	Reynolds, QB	72	Broyles, T
27	Taylor, QB	73	Schimpf, T
32	Schmidt, HB	74	Potchad, T
33	Barrett, FB	75	Petrich, E
34	Beard, FB	76	Hicks, E
35	May, FB	77	Esposito, G
36	Howard, FB	78	Killinger, T
42	Brennan, E	79	Schmidt, P., G
43	Schmidt, A., HB	80	Bankhead, E
44	Commons, HB	81	Brown, E
46	Allmon, HB	82	Saunders, E
48	Kenney, HB	83	Chapman, E
51	Powell, E	84	Streets, E
54	Linebarger, C	85	Squire, E
55	Mroz, C	86	Smith, M., E
56	Numrich, C	87	Kennard, E
58	Barney, C	88	Welch, E
61	Ramsey, G	89	Kietzmann, E
62	Schoening, G		

UNO SQUAD

12	Gonella, QB	76	Kendzierski, DE
19	Peters, QB	77	Luger, DE
27	Wise, DB	79	Brenan, T
28	Paporello, DB	80	Belitz, LB
31	Smagacz, FB	81	Crnkovich, SE
32	Williams, G	82	Polifrone, LB
33	Johnson, FLK	83	Washington, T
34	Sayers, HB	84	Scholz, TE
35	Cummings, HB	85	Standifer, S., TE
37	Franklin, DB	86	Bauer, LB
38	Jarrett, DB	87	Dice, SE
42	Wachtler, FLK	89	McKernan, FLK
43	Shaw, QB-K		
44	Reagan, FB		
45	Walker, FB		
50	Emsick, C		
51	Mesa, C		
60	McGinn, G		
61	Buzbee, G		
62	Pulliam, G-K		
63	McGill, LB		
64	Taylor, B., T		
66	Kanger, LB		
68	Schuckman, G		
69	Klepper, G		
70	Kipfmiller, T		
71	Ryan, T		
72	Hoakanson, T		
75	Jackson, T		

te you never get tired of.

Oldsmobile recreates a scene from the classic movies.



Olds Delta 88 Royale: The bold and the beautiful.

Meet our new top-of-the-line 88. Big-car room and ride on a longer 124-inch wheelbase. Vinyl roof, pin-striping, fender louvers, big Rocket 455 V-8 and much more, standard. All for little more than you'd pay for an ordinary car! **Escape from the ordinary.**



INDIAN STATISTICS

No.	Player	Pos.	Ht.	Wt.	Hometown	Yr.
12	Gonella, Rocco	QB	5-10	178	Syracuse, N. Y.	So.
19	Peters, Gary	QB	5-10	185	Omaha	Sr.
27	Wise, Phil	QB-CB	5-11	180	Omaha	So.
28	Paporello, Gary	DCB	5-11	180	Little Ferry, N. J.	Jr.
31	Smagacz, Pat	FB	6-0	185	Omaha	Sr.
32	Williams, Lloyd	OG	5-10	170	Cincinnati, Ohio	Sr.
33	Johnson, Harry	FLK	6-0	180	Rockaway, N. Y.	So.
34	Sayers, Ron	HB	6-2	215	Omaha	Sr.
35	Cummings, Robin	HB	6-0	200	Syracuse, N. Y.	Jr.
37	Franklin, Don	DB	5-10	175	Cincinnati, Ohio	Jr.
38	Jarrett, Tom	DCB	5-10	190	Rochester, N. Y.	Fr.
42	Wachtler, Bill	FLK	6-0	194	Omaha	Fr.
43	Shaw, Ray	QB-K	6-0	200	Omaha	Sr.
44	Reagan, Francis	FB	5-10	190	Syracuse, N. Y.	Jr.
45	Walker, Billy	FB	6-0	180	Morristown, N. J.	Fr.
50	Emcick, Rick	C	6-0	200	Omaha	Jr.
51	Mesa, Fernando	C	6-0	215	Omaha	Jr.
60	McGinn, Tom	OG	5-10	200	Omaha	Jr.
61	Buzbee, Dick	OG	5-7	195	Omaha	Fr.
62	Pulliam, Oscar	OG-K	6-0	230	St. Louis, Mo.	Sr.
63	McGill, Tim	MLB	6-0	208	Omaha	So.
64	Taylor, Bob	OT	5-11	196	Omaha	Fr.
66	Kanger, Bernie	MLB	6-2	195	Omaha	Sr.
68	Schuckman, Rich	OG	6-1	220	Cincinnati, Ohio	Sr.
69	Klepper, Dan	OG	6-3	245	Omaha	Sr.
70	Kipfmiller, Gary	DT	6-4	325	Saginaw, Mich.	Fr.
71	Ryan, Pat	OT	6-0	215	Omaha	So.
72	Hoakanson, Dean	OT	6-0	210	Omaha	Sr.
75	Jackson, Ed	DT	6-0	258	Cincinnati, Ohio	Sr.
76	Kendzierski, Joe	DE	6-4	225	New Buffalo, Mich.	So.
77	Luger, Richard	DE	6-4	240	Jersey City, N. J.	So.
79	Brennan, John	DE	6-5	225	Hoboken, N. J.	So.
80	Belitz, Buddy	LB	6-1	220	Omaha	Sr.
81	Crnkovich, Tony	SE	6-4	175	Omaha	Fr.
82	Polifrone, Dom	LB	5-11	225	Hackensack, N. J.	Jr.
83	Washington, Mel	DT	5-10	205	Rochester, N. Y.	So.
84	Scholz, Ted	TE	6-2	200	Omaha	So.
85	Standifer, Stan	TE	6-2	195	Omaha	Jr.
86	Bauer, George	LB	6-0	205	Cincinnati, Ohio	So.
87	Dice, John	SE	5-11	170	Omaha	So.
89	McKernan, Tom	FLK	6-3	200	Cincinnati, Ohio	Jr.

"OFFICIAL WATCH FOR THIS GAME—LONGINES—THE WORLD'S MOST HONORED WATCH"

GO
GO
GO
GORILLAS

**Burnidge
Welding
Supplies**

321 E. 4th AD1-6010

**TOOLS &
Industrial Equipment
PIPES & FITTINGS**

Established Since 1914

**General
Machinery Co.**

512 N. Elm AD1-1550

BEST WISHES
TO
THE GORILLAS



**Bob's Textile
Care Service**

1608 S. Bdwy. AD1-0650

SMASH 'EM



**Automatic
Termite
Control**

506 S. Bdwy. AD1-6920

**Vern Plattner
Motors**

114 S. Bdwy AD1-2450

**Shop at one of Pittsburgh's Three Big
Foodtown Super Markets**

Pittsburg is also the home of the
Foodtown Offices and Warehouse

Foodtown Super Markets

1806 N. Broadway
612 S. Broadway
312 W. Fourth

AD1-5810
AD1-4780
AD1-7420

Southeast Kansas Largest Bank

For Your Convenience:

4 Drive-In Windows

Installment Loan Dept—Open 9 to 5

Convenient Parking

The National Bank of Pittsburg

Third and Broadway

AD1-0600

**Pittsburg's Friendly
Department Store**

**Famous Brands's for
Every Member of the
Family**

•

Back The Gorillas!

**Jones Store
Co.**

411 N. Bdwy.

AD1-4200

JOHN R. THOMAS
Frame & Wheel Alignment
PHONE 231-0940
219 S. Broadway

WIN
GORILLAS
WIN

Dick's Transfer
910 N. Bdwy AD1-1880

RCA
**Ott's TV and
Appliance**
1301 N. Bdwy AD1-1810

Fight
Gorillas
Fight



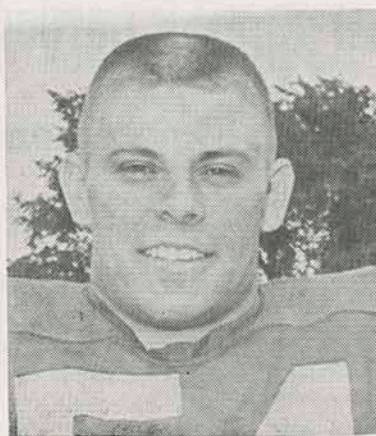
Delleletters

603 E. Washington AD1-7130

MEET THE 1968 GORILLAS



TED ALLMON
Halfback, Pittsburg



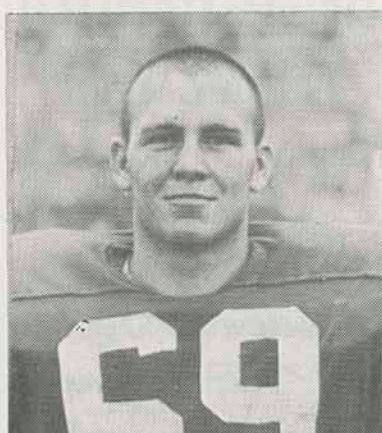
FRED LINEBARGER
Center, Shawnee Mission



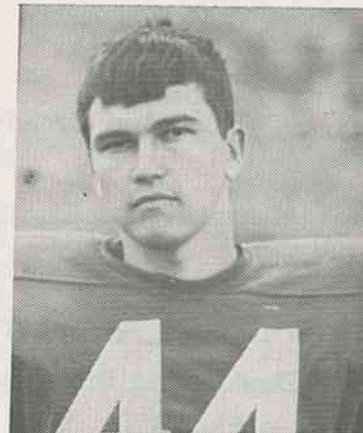
DONALD KRUG
Guard, Jacksonville, Florida



MIKE CHAPMAN
End, Fredonia



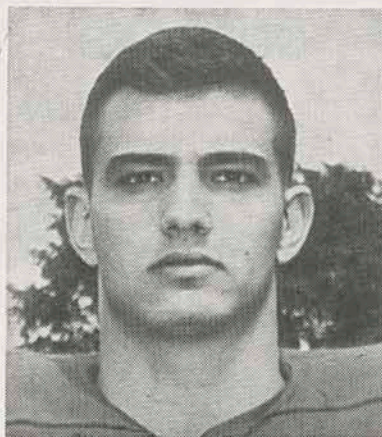
RALPH RAMSEY
Guard, Altamont



RON COMMONS
Halfback, Lawrence



MIKE POTCHAD
Tackle, Kansas City



DON STREETS
End, Neodesha



LARRY BEARD
Fullback, Pittsburg

BEAT'EM GORILLAS

Van Hoy Used Cars

921 S. Bdwy AD1-9200

Fight Gorillas, Fight
Smith Funeral Home
510 S. Bdwy. AD1-4700

BEST OF LUCK GORILLAS

A&W Rootbeer

1609 N. Bdwy AD1-9560

Flowers by Gale

For All Occasions
422 N. Bdwy AD1-1800

Fight Gorillas, Fight
Messenger Lumber Co.
822 E. 4th AD1-0700

The Pizza Hut

102 E. Quincy AD1-8990

Broadway Realty Inc.

August Rua and Wayne Allai
REALTORS

Graduates of KSC
1504½ N. Bdwy. AD1-3020

YEA, YEA, GORILLAS
Roitz Oil Co.
Kansas & Joplin AD1-5610

Fight Gorillas, Fight
Holiday Lanes
2406 N. Bdwy AD1-2222

W. A. Thomas Supply Co.

112 W. 3rd AD1-3070

LITTLE'S, INC.

Ladies Ready-to-Wear
515 N. Bdwy. AD1-1220

Montgomery Ward

517 N. Bdwy. AD1-3200

United Weatherproofing

915 E. Jefferson AD1-2160

GO,
GORILLAS

G. E. Knost Novelty Co.

1211 E. Fourth AD1-5240

Go
Big Red
Go

The Oxford Shop

Across The Street
From The College

**"MOTHER'S
ONLY
COMPETITOR"**

Harry's Cafe

412 N. Bdwy. AD1-9703

Paul Jones Realty

106 E. 5th AD1-6800

Gutteridge Pharmacy

606A N. Bdwy AD1-3410

A & A Food Store

202 S. Bdwy AD1-7220

Martinous Produce Co.

618 E. 7th AD1-5840

Midwest Tank and Reservoir Service

915 E. Jefferson AD1-2160

Gragg Typewriter Co.

110 W. 4th AD1-3760

Williams Jewelry

424 N. Bdwy AD1-2130

Pittsburg Lumber Co.

601 E. 4th AD1-0730

Decker Insurance Agency, Inc.

115 W. 4th AD1-3660

Southern's Vickers Service

510 W. 4th AD1-9883

Bud's Jewelry

720 N. Bdwy AD1-7399

Plaza Supermarket

Across from the College

Pittsburg Ambulance Service

915 N. Bdwy AD1-4600

Go

Big Red

Go



Arma Elevator Company

800 E. 14th AD1-5000

COMMERICAL PRINTERS

Programs

Catalogs

Annuals

Business Forms



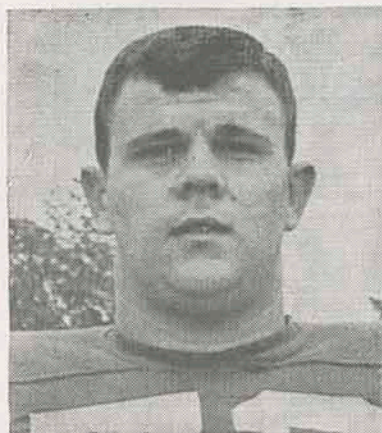
Pittcraft, Inc.

104 N. Locust AD1-6200

Abe's Flowers

108 N. Bdwy AD1-5690

MEET THE 1968 GORILLAS



CHARLES BROYLES
Tackle, Mulberry



ROGERS SMITH
Quarterback, Bellevue, Neb.

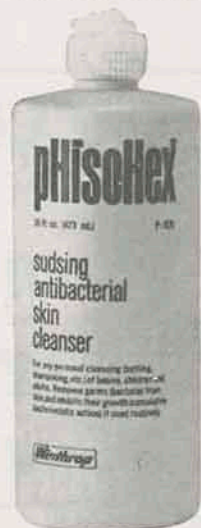


RON KIETZMANN
End, Kansas City



We're proud...

that pHisoHex® has been selected as the antibacterial wash to be used by the U.S. Team for the 1968 Olympic Games!



A winning athlete takes special care of his skin. Above all, he protects it against bacteria that can cause infections and lead to missed practice sessions and games.

If you've ever tried to play with an infected blister on your heel or an abscess on your finger, then you know the role of healthy skin in sports. And that's why pHisoHex is an important part of an athlete's daily health routine. pHisoHex is America's leading liquid antibacterial skin cleanser in homes and in hospitals. Used regularly in place of soap, pHisoHex produces a superclean skin and builds up an invisible antibacterial film of hexa-

chlorophene to protect your skin against germs between washings.

And if you have problem skin, pHisoHex is often valuable. The antibacterial film it leaves on your face will ward off blemish-infecting bacteria. pHisoHex also helps to soften and wash away blackheads.

Use pHisoHex, the skin cleanser of winning athletes.

Made by Winthrop Laboratories, 90 Park Avenue, New York, N.Y. 10016. Available in drugstores in 5 oz. and 16 oz. plastic squeeze bottles.

Winthrop

Winthrop Laboratories, New York, N.Y. 10016

**The Downtown Bank at the Sign
of the Revolving Clock**

Since
1903

A Complete Banking
and
Trust Service

Member
FDIC

**The First State Bank
of Pittsburg**

417 N. Broadway
Fourth and Walnut

Main Bank
Drive-In Bank

AD1-2000
AD1-2016

**ALL SUCCESS
to the
GORILLAS**



**Ellsworth
Funeral
Home**

Bob Wilson, Director

114 W. 6th

AD 1-0250

**"Scrap 'em
Gorillas"**

S. A. Rose
IRON & METAL
COMPANY

501 N. Joplin

AD1-0620

**Oldham
Dairy**

512 S. Georgia

AD1-4110

Seymour's

513 N. Bdwy.

AD1-1250

**WE ARE
ROOTING FOR
A WINNER**

**Dickey
Clay
Manufacturing
Company**

900 E. 2nd

AD1-1400

Eager
To Serve
YOU!

City National
Bank
Of Pittsburgh

522 S. Bdwy

AD1-8400

Prescription
Specialists

Cut-Rate
Prices

Free
Delivery

Lindburg
Drug
Inc.

611 N. Bdwy

AD1-7300

**ELECTRIC HEAT
IS**

Instant, Flameless, Clean, Constant, and Worry-Free

LIVE MODERN-GO TOTAL-ELECTRIC

It costs so much LESS than you think



320 N. BDWY.

AD1-4000

Call Today For FREE Estimates

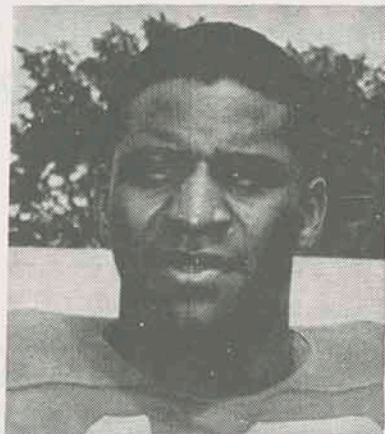
MEET THE 1968 GORILLAS



PHIL SCHMIDT
Guard, Caldwell



FRED SCHOENING
Guard, Fulton, Mo.



ALPHA BIBBS
Halfback, Kansas City, Mo.



ALBERT SCHMIDT
Halfback, Caldwell



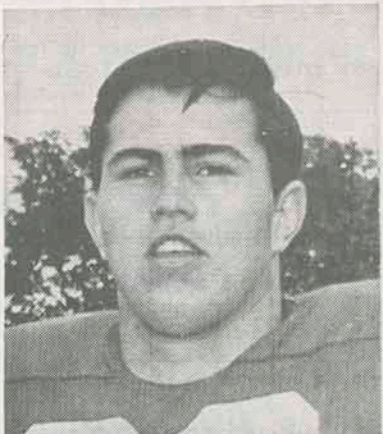
JIM BRENNAN
End, Kansas City



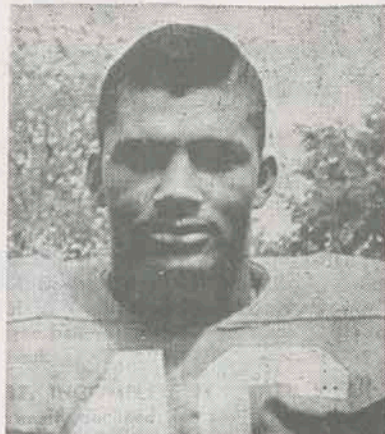
JIM MANLEY
Guard, Fort Scott



GARY TAYLOR
Quarterback, Joplin, Mo.



BOB HOWARD
Fullback, Kansas City

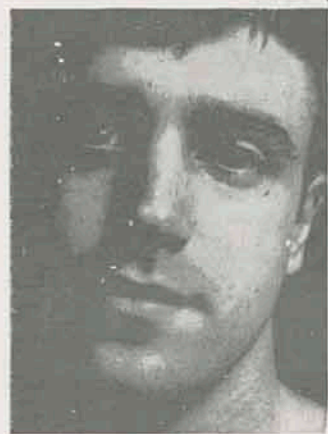


FLOYD MAY
Halfback, Kansas City, Mo.

Break your beard in right.

Right now your beard is in the formative stage.

You can shave it with a razor blade like your father does. And each time you do your beard will grow back a little more difficult. Until one day shaving's no longer a chore. It's an agony.



Look no further than your father's face for proof.

But fortunately, you're catching your beard at an early age. You can break it in to be just as shaveable 10 and 20 years from now as it is today.

With a REMINGTON® shaver.

And if you think the kind of shave we're selling won't be close enough for you, you're wrong.

Our new blades are sharper than anything that's been in an electric shaver before. And there's a dial that lets you adjust them for your skin and beard.

What's more, you can dial a REMINGTON electric shaver into a sideburn trimmer.

Admittedly, it costs more to buy our electric shaver than a razor and some blades.

But it's a good investment.

These next few years will determine how you and your beard will get along for the rest of your lives.



REMINGTON
ELECTRIC SHAVER DIVISION, BRIDGEPORT, CONNECTICUT.

We Manufacture
The Best In
Wallboard

Wallace
Manufacturing
Company

811 E. Jefferson

AD1-8200

For The Best In
Service, Comfort,
Convenience
and Economy

Choose
Modern Gas
Appliances

See your Gas Appliance Dealer
Plumber, Heating Contractor
Or . . .

The Gas
Service Co.

118 E. Fourth

AD1-3300

We Are
Back
Of You
Gorillas

•

Tri-State
Building &
Supply Co.

3035 N. Bdwy.

AD1-5260

Fight Gorillas, Fight

Fieldcrest Superette

2006 S. Joplin

AD1-6500

NAYLOR-QUINN
Funeral Home

609 N. Elm

AD1-0680

GOOD LUCK GORILLAS

Daugherty Pontiac

119 N. Bdwy.

AD1-0900

John's Sports
Center

1511 N. Bdwy.

AD 1-7740

A Complete Sympathetic
Funeral Service for Every-
one of Every Creed and
Income



Brenner
Mortuary

114 E. 4th

AD1-5600

GO

GORILLAS

GO

**FIRST
STATE BANK
OF ARMA**

Serving the Area
With Pride
For Many Years
ARMA, KANSAS

**TWO
WINNERS**

THE GORILLAS
and
JAYHAWK COAL

**MACKIE
CLEMENS**
COAL CO.

502½ N. Bdwy. AD1-1050

Good Luck, Gorillas

**MINERS
State Bank**

211 E. McKay
Frontenac AD1-9280

YEA, YEA, GORILLAS

Moore Furniture

622 N. Bdwy AD1-6360

**Helen Maletz
Insurance Agency**
102 W. Fourth AD1-0640

Go

Big Red

Go

**Pittsburg
Optical Service**

105 W. 5th AD1-6590

**Fight Gorillas, Fight
Saia Explosives**

303 E. McKay Frontenac
AD1-9610

**The Gorillas
Have Quality**

We Have It Too



**BECK & HILL
Market**

303 N. Bdwy. AD1-0540

WIN!

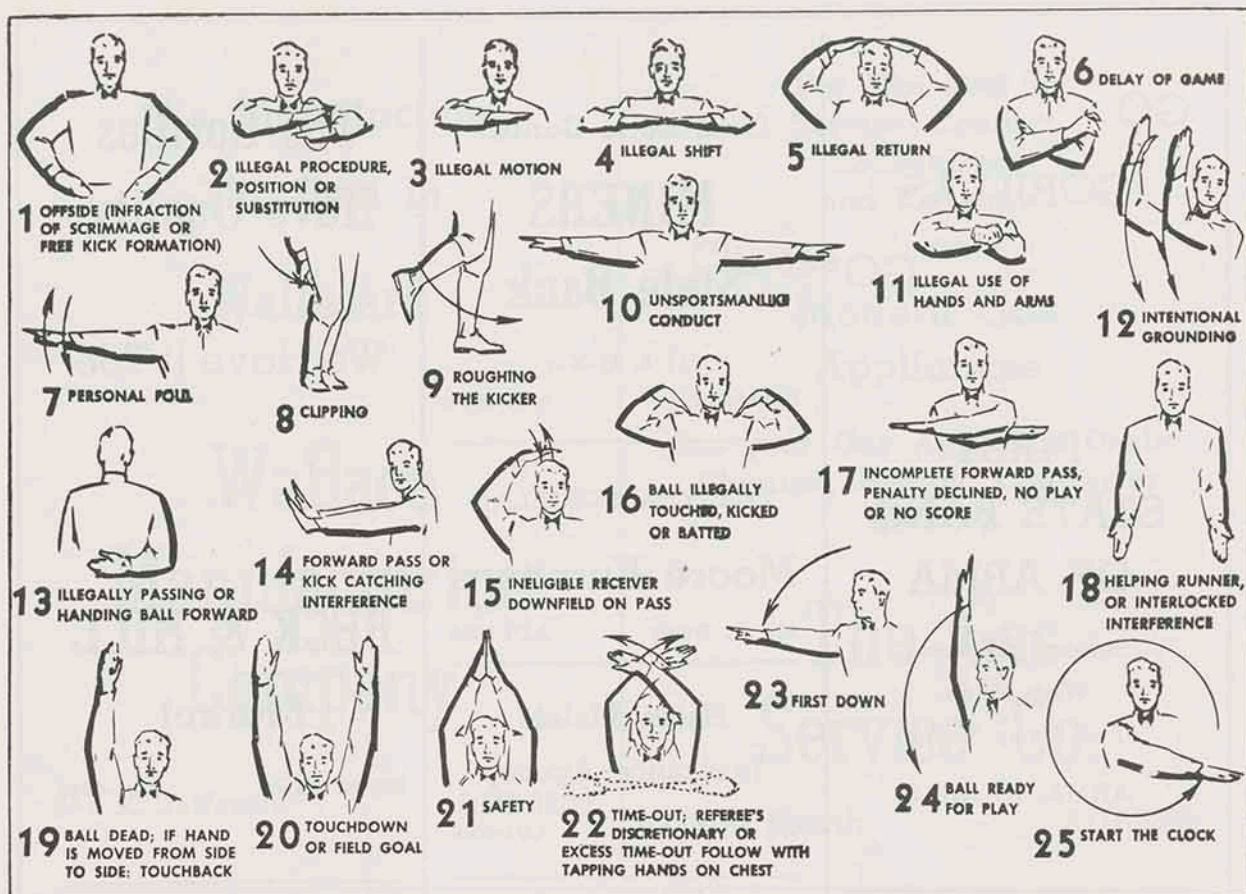
WIN!

WIN!



**Pittsburg
Automotive**

503 N. Locust AD1-5850



1. OFFSIDE by either team; Violation of scrimmage or free kick formation; Encroachment on neutral zone—Loss of Five Yards.

2. ILLEGAL PROCEDURE, POSITION OR SUBSTITUTION—Putting ball in play before Referee signals "Ready-for-Play"; Failure to complete substitution before play starts; Player out-of-bounds when scrimmage begins, or on free kick formation; Failure to maintain proper alignment of offensive team when ball is snapped; False start or simulating start of a play; Taking more than two steps after Fair Catch is made; Player on line receiving snap; Free kick out-of-bounds—Loss of Five Yards.

3. ILLEGAL MOTION—Offensive player illegally in motion when ball is snapped—Loss of Five Yards.

4. ILLEGAL SHIFT—Failure to pause one full second in shift play—Loss of Five Yards.

5. ILLEGAL RETURN—Infraction of substitution rule—Loss of Five Yards.

6. DELAY OF GAME—Consuming more than 25 seconds in putting the ball in play after it is declared ready-for-play; Failure to remove injured player for whom excess timeout was granted; Crawling—Loss of Five Yards. Team not ready to

play at start of either half—Loss of 15 Yards.

7. PERSONAL FOUL—Tackling or blocking defensive player who has made fair catch; Piling on; Hurdling; Tripping; Grasping face mask of opponent; Tackling player out-of-bounds, or running into player obviously out of play; Loss of 15 Yards. (Flagrant offenders will be disqualified.)

8. CLIPPING—Loss of 15 Yards.

PENALTIES

9. ROUGHING THE KICKER or holder—Loss of 15 Yards.

10. UNSPORTSMANLIKE CONDUCT—Striking an opponent with fist, forearm, elbow or locked hands; Kicking or kneeling—Loss of 15 Yards (offenders will be disqualified); Violation of rules during intermission; Illegal return of disqualified player; Coaching from side lines; Invalid signal for Fair Catch; Persons illegally on field—Loss of 15 Yards. (Flagrant offenders will be disqualified.)

11. ILLEGAL USE OF HANDS AND ARMS by offensive or defensive player—Loss of 15 Yards.

12. INTENTIONAL GROUNDING of forward pass—Loss of Five Yards from spot of pass Plus Loss of Down.

13. ILLEGAL FORWARD PASS OR ILLEGALLY HANDING BALL FORWARD—Loss of Five Yards from spot of foul Plus Loss of Down.

14. FORWARD PASS OR KICK CATCHING INTERFERENCE—Interference with opportunity of player of receiving team to catch a kick—Loss of 15 yards. Interference by member of offensive team on forward pass—Loss of 15 Yards Plus Loss of Down. Interference by defensive team on forward pass—Passing Team's Ball at Spot of Foul and First Down.

15. INELIGIBLE RECEIVER DOWNFIELD ON PASS—Loss of 15 Yards.

16. BALL ILLEGALLY TOUCHED, KICKED OR BATTED—Forward pass being touched by ineligible receiver beyond the line of scrimmage—Loss of 15 Yards from Spot of Preceding Down and Loss of a Down. Eligible pass receiver going out-of-bounds and later touching a forward pass—Loss of Down; Illegally kicking the ball—Loss of 15 Yards; Illegally kicking or batting a free ball—Offended team's ball at Spot of Foul.

17. INCOMPLETE FORWARD PASS—Penalty declined; No play or no score.

18. HELPING THE RUNNER, or interlocked interference—Loss of 15 Yards.

GORILLA BOOSTERS

The following firms and individuals have cooperated with the Athletic Council in making this program and the 1-page ad in the Pittsburgh Headlight-Sun possible. Their spirit and friendliness as well as all advertisers represented in this program are worthy of your support and patronage.

Abe's Flowers	Campbell "66" Express	J. C. Penney Co.
Abbe Deruy Maytag Co.	Centennial Life Insurance	Gutteridge Pharmacy
Angwin Blair Insurance Agency	City National Bank of Pittsburgh	Plaza Bakery
Arma Elevator	Coca Cola	Palace Clothing Co.
August Rua Insurance Agency	Cook Paint and Varnish	Pepsi-Cola Bottling Co.
Baker Printing, Inc.	College Bakery and Donut Shop	Pla-Mor Smoke House
Beasley Tire Co.	Cinema-Pittsburg Drive-In	Seymours
Beitzinger Hardware and Furniture Co.	Meadow Gold Dairy	Smith Funeral Home
Besse Motor Hotel	Midwest Auto Store	Jones Store
Bob's Textile Care Service	Mackey-Clemens Fuel Co.	KG&E The Electric Co.
Burger Chef	Moore's Furniture	KSEK
Weeks-Wilbert Realty	Montgomery Ward and Co.	Ku Ku Burger
The Pittsburg Headlight-Sun	Crawford County Realty	Lindburg Drug, Inc.
Hull and Dillon Packing Co.	Deruy-Albertini Furniture Co.	1 Hour Martinizing
Gas Service	Dryer's Shoe Store	Miller's Studio
Gibson's Discount Store	Ellsworth Funeral Home	National Bank of Pittsburg
McCall Shoe Store	First State Bank of Pittsburg	Naylor-Quinn Funeral Home
Bowlus School Supply	The Appliance Center	Oldham's Dairy
Bud's Jewelry (Bud Benelli)	Gragg Typewriter Co.	Otto's Cafe
Brenner Mortuary	Grant Oil Co.	Walt Panneck Men's Wear
Clyde's Music, Inc.	General Machinery and Supply Co.	Thomas Frame and Wheel Aligning
Flowers by Gale		W. A. Thomas Supply Co.
		Tower Ball Room
		Bill Williams Chevrolet
		F. W. Woolworth Co.

The Athletic Council appointed by the President is charged with the responsibility for carrying out the Athletic program of the College. They have many responsibilities such as stadium decorations, arrangements for concessions, tickets, seat reservations, press box, guards, half-time activities, etc.

Athletic Director Carnie Smith is chairman of the committee responsible for the Gorilla Booster and Richard I. Jacques is the editor. Refer publication matters to the Athletic Council, Phone AD 1-7000.

GO BIG RED
Hofer Truck Sales

20th & Bypass

AD1-5210

Compliments of

Pla-Mor Smoke House

420 N. Bdwy

AD1-9767



The Chevrolet starting line-up for 1969:

(if we don't build the car you want, maybe what you want isn't a car.)

Chevrolet

Caprice Coupe
Caprice Sedan

Impala Custom Coupe
Impala Sport Coupe
Impala Sport Sedan
Impala Convertible
Impala 4-Door Sedan

Bel Air 4-Door Sedan
Bel Air 2-Door Sedan

Biscayne 4-Door Sedan
Biscayne 2-Door Sedan

Chevelle

Malibu Sport Coupe
Malibu Sport Sedan
Malibu Convertible
Malibu 4-Door Sedan

300 Deluxe Sport Coupe
300 Deluxe Coupe
300 Deluxe 4-Door Sedan

Chevrolet Wagons

119" Wheelbase
Kingswood Estate Wagon
(2- & 3-seat)
Kingswood Station Wagon
(2- & 3-seat)

Townsmen Station Wagon
(2- & 3-seat)
Brookwood Station Wagon
(2-seat)

116" Wheelbase

Concours Estate Wagon
(2- & 3-seat)
Concours Station Wagon
(2- & 3-seat)
Greenbrier Station Wagon
(2- & 3-seat)
Nomad Station Wagon
(2-seat)

Camaro

Sport Coupe
Convertible

Chevy Nova

Coupe
Sedan

Corvair

Monza Sport Coupe
Monza Convertible
Corvair 500 Sport Coupe

Corvette

Coupe
Convertible

Putting you first, keeps us first.

