

Pittsburg State University

## Pittsburg State University Digital Commons

---

Caney High School, 1911-1972

Yearbooks

---

1963

### Caney High School Yearbook, 1963

Caney High School

Follow this and additional works at: [https://digitalcommons.pittstate.edu/caney\\_high\\_yearbooks](https://digitalcommons.pittstate.edu/caney_high_yearbooks)

---

#### Recommended Citation

Caney High School, "Caney High School Yearbook, 1963" (1963). *Caney High School, 1911-1972*. 53.  
[https://digitalcommons.pittstate.edu/caney\\_high\\_yearbooks/53](https://digitalcommons.pittstate.edu/caney_high_yearbooks/53)

This Book is brought to you for free and open access by the Yearbooks at Pittsburg State University Digital Commons. It has been accepted for inclusion in Caney High School, 1911-1972 by an authorized administrator of Pittsburg State University Digital Commons. For more information, please contact [digitalcommons@pittstate.edu](mailto:digitalcommons@pittstate.edu).



1963

Caney Valley Historical Society

KANE-KAN





Caney Valley Historical Society





·HIGH SCHOOL·

Caney Valley Historical Society



Caney Valley Historical Society



A large, stylized graphic of the letter 'K' is positioned on the left side of the page. It is composed of several overlapping, thick, grey and black geometric shapes that form the vertical stem and the diagonal strokes of the letter. The design is modern and abstract.

Caney Valley Historical Society

# CANEY HIGH SCHOOL

## KANE-KAN 1963

Herein we, the staff of the 1963 Kane-Kan, present glimpses of school life of the year 1962-63. We have endeavored to make this annual reflect as accurately as possible the spirit of the students and the school as a whole. We hope that you may turn its pages in future years and recall pleasant memories.





## ADMINISTRATION AND FACULTY

4



## STUDENTS

9



## ACTIVITIES

35



## ATHLETICS

49



## ROYALTY

59





We, the annual staff of 1963, dedicate this annual to Earl Morris.

For nine years Earl has dedicated his efforts to the upkeep of our school. He is a friend to every student and teacher at Caney High School; therefore, we, in our last year at Caney High School feel he deserves this dedication.



# SCHOOL BOARD



The Board of Education is the agent responsible for establishing the educational activities of our public schools. The citizens on the board have regular meetings with Mr. Ritchey, the superintendent, to outline the policies of the program. The members of the board are: Left to right, first row: Messrs. E. M. Baker, Doyle Burch, O. J. Bridenstine. Second row: E. M. Dick, C. E. Lingle, Noble Notestine.



# SUPERINTENDENT

Kenneth I. Ritchey, our superintendent, completes seven years at Caney this year. As superintendent he is in charge of administration of the policies of the Caney-Public Schools.



# CLERK

Her laugh and smile are familiar... "Give her a typewriter, a telephone, and a problem; she's content!" Let the office become noisy and she's very "disturbed." Being the office secretary means real work, and there's plenty that Miss Liberman does in the Caney High office.

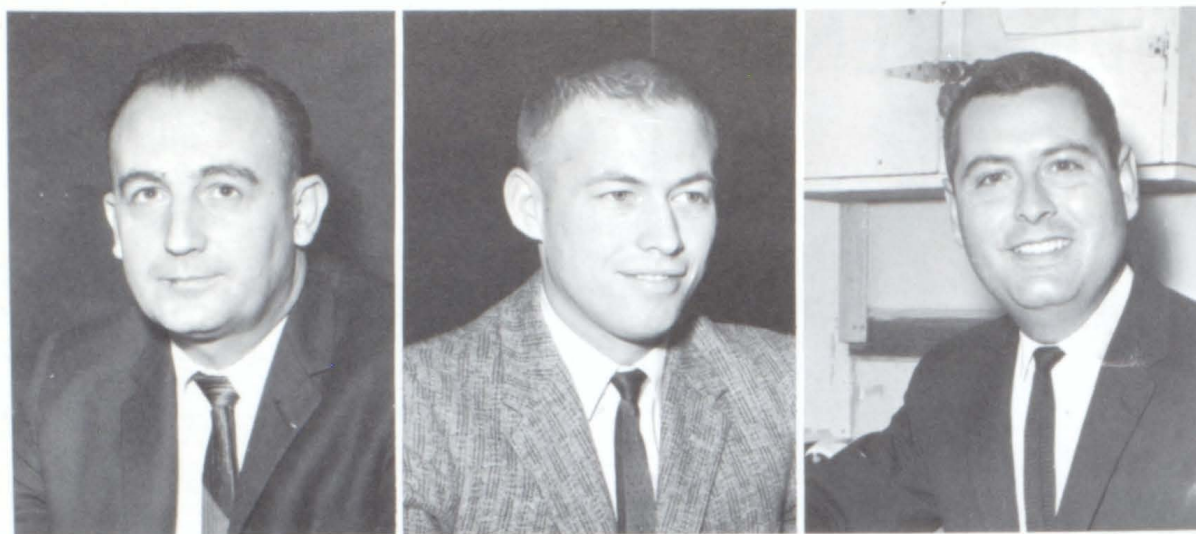


# PRINCIPAL

Well known around Caney High is our Principal, Mr. Chambers. As a friend or as principal, he can't be beat in the opinion of most of the students. He holds meetings, interviews new teachers, makes announcements, "peps up" assemblies, frowns upon "bad" boys, and cries at graduation! Here, too, his work is never done. There is always more to do and he doesn't mind helping people with individual problems.







LEFT TO  
RIGHT:  
Kenneth  
Armstrong,  
English;  
Clifford  
Bale, Sci-  
ence;  
Easton  
Berry,  
Music.

## FACULTY

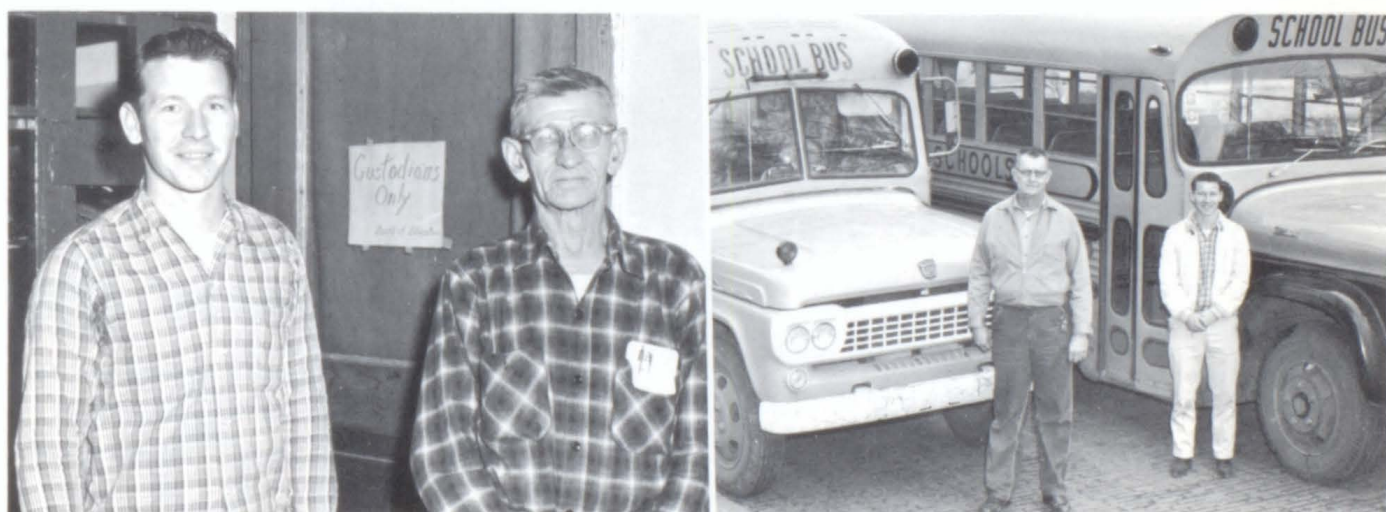
LEFT TO RIGHT, FIRST ROW: DIMPLE BROWN, Home Economics; BRAD BUCKNER, Biology; WILLIAM COFFMAN, Business Education; DON DAVIS, Science & Math; MINNIE DE NELSKY, Foreign Language; RUTH DOW, Librarian; RALPH FIELD, Vocational Agriculture; LOUISE FRANKS, English.







LEFT TO RIGHT, TOP ROW: KELLY GUTHRIE, Social Science; BOBBY HENSON, Math; CHARLES HOFFMAN, Boys Physical Education; RUTH MOSSLANDER, Girls Physical Education; GEORGE RAU, Industrial Arts; MARGARET READEY, English; HORACE TAYLOR, Social Science; MARION TYLER, Math.



LEFT TO RIGHT, CUSTODIANS: Bill Ernest, Earl Morris. BUS DRIVERS, Walter Grother, Bill Ernest.

## CUSTODIANS AND BUS DRIVERS



# PROPHECY

June 15, 1973

Dear Friend:

Wish you could have been here for the Alum banquet. We had a wonderful time. I'll give you a report on the class of '63.

Floyd Stockwell just received his discharge from the Army. He is looking for work as a baker.

Karen Lane, married and has three children, is in charge of the biggest children's Therapy Clinics in the four state area.

Anne Pinner graduated from Pittsburg with a degree in Art Education. She is currently living in San Antonio, Texas where she teaches Art in the senior high school.

Dennis Wakeland is a famous, but poor, professor of history in a college back East. He had planned to be married by now, but his rich uncle hasn't come through.

Billy Coffman has a degree in drafting. Don't know where he is working, but he must have a good job if his wife's clothes and jewelry are any indication.

Mike Scimeca is working on his Ph.D. He is, as he puts it--still single, of course.

Chuck Gregg after six years of Junior College and as many children has retired to the Sunny Side Rest Home at Caney recuperating from a nervous breakdown.

Dick Harris, still single, graduated from college and is working for Phillips. He was telling around that he is making \$650 per month and his expenses are only \$500. Perhaps he was trying to interest one of the single girls.

Gene Hockett spent some time with Uncle Sam. He is now home living on a small farm. Also works in one of the local garages.

Frank Huffman has a college degree and is working. He didn't have much to say. However, he did say he was still single.

Eddie Smith has his own garage and I guess several hot rods. He doesn't think he has time for marriage.

Dan McGinnis graduated from college with a degree in business administration. He is married and I believe they have two children.

Joyce Hannegan is married and has two children. She had a good job with Phillips in Bartlesville.

Donna Parker is raising her own football team. Don't know how many she lacks, but evidently not too many. She married a guy by the name of Roper.

Stanley Price has a degree in accounting and is a C.P.A. He is married and they have two small children.

Forrest Noah attended junior college. He is married and he and his "small" family live in Caney. He works for Phillips.

Pattie Glatfelder graduated from Coffeyville College. She is married and running her own nursery school.

Ruth Muck completed nurses training and worked as a nurse in a hospital for three years. For the past four years she says she has simply been a housewife. What little nursing she has done has been hereford cattle.

Kent Notestine married Karen Scott. They have two little ones. He is working as a C.P.A. in Bartlesville.

Janet Bryan is working at the capital building in Topeka. She graduated from Coffeyville College and is married.

David Troutman graduated from college and is working for Uncle Sam.

Allen Harrison has a TV and Radio repair shop in town. He also works, when needed, at the mortuary.

Karen Nelson graduated from nurses training and is a nurse in a small hospital in New Mexico.

Junior Moore is a successful engineer and is happily married to a beautiful young girl.

Marta Buster is a beautician. She has five children. Her first marriage went on the rocks. She is currently married to a man from California.

Tim Fulton graduated from Oklahoma Tech at Okmulgee. He is a plumber here in town.

Vicki Ibach attended Bartlesville Business College and worked awhile. However, when she married she retired from work (office work, that is.).

Priscilla Robertson is married to a doctor. She evidently met him during an operation as she is a surgical nurse.

Kay O'Shields graduated from Bartlesville Business College. She calls herself an old maid office worker.

Arlene Vining, author of a Pulitzer Prize winning novel; millionairess, due to the sudden departure of her two latest husbands. She has two children and a butler.

Loretta Grother is a private secretary at Phillips in Bartlesville.

Max Armitage is in the U. S. Navy, a career man.

Boyd Newby is a veterinary and has his own clinic on his hereford ranch in Texas. He and Ruth have one son--three years old.

Clayton Dean is another Navy man. He, too, is making it a career. You know, he will be eligible for retirement before I am.

Barbara Koontz graduated from Ottawa University. She is married and has two children. Understand she is teaching part time in a mission school.

Diana Bright said she was trying to solve her own problems and wasn't getting much help from S. V. who was crying on her shoulder.

Marilyn Durscherl is an interior decorator; she said she wanted to dedicate her life to the redecorating of ol' Caney High. She's afraid she can't do much with only \$6.43.

Carolyn Lessman is a beautician and is working as a cleaning lady in the home of a wealthy person. Believe he was in the same class.

Sandy White is a beautician also. She is married, but she says she didn't find a millionaire so she is working five days a week in her shop.

Howard Kennedy is home on furlough. He just finished boot camp--graduated with top honors. Weights 190 pounds.

Linda Marshall attended college two years and then attended airline school. She is married to a pilot.

Sue Vaught attended business college in Bartlesville. She then moved to the city and I understand she is partying all the time.

Mike Hait says he has a street cleaning degree. Actually, I think he has done better than he will confess.

John Winkler received his B.A. degree in liberal arts from K.U. in 1968 and his M.A. in 1969. He is presently assistant manager of a Penney's department store. He has been happily married for two years and is making payments on a new Cadillac. COOL!

Donna Barrett is working at Phillips. She is married and has at least one child. Don't believe she told me how many children.

Sharon Payne is a beautician. She is married to G. G. and they have five children.

Patsy Hinman is a commercial artist doing fashion designing.

Carolyn Mattix got both her B.S. degree in Home Ec. and her man at Manhattan.

Jerry Meyer roamed the country trying to find a profession. He finally gave up and returned to his favorite sport. He is presently the National Snooker Champ.

Steve Potts talked a lot but didn't say much. Just back from college. It must have been rough on him because he has quite a bald spot.

Bob Courtright said he was terribly embarrassed, this being the year of the great depression. Said he had invested his life savings in the longhanded underwear business and now the bottoms were falling out everywhere.

Ron Odom said he finished first year Chemistry after blowing the lab up twice and driving five lab teachers mad.

Mike Clark lives in the bargain basement at Peru and is driving back and forth to school here at Caney. Actually, he could finish but each year he finds a new U T partner and flunks purposely.

Judy Heapes is a beautician. She is married and has three children. By the by, her husband is an astronaut and he was here with his Sputnik hair-do.

Sharon Harris graduated from Pittsburg in 1967, and has been teaching school since. She is indeed a very attractive "old maid" school teacher.

Eraina Brinkley is now Mrs. Clarence Ray Wade. They have three fine children.

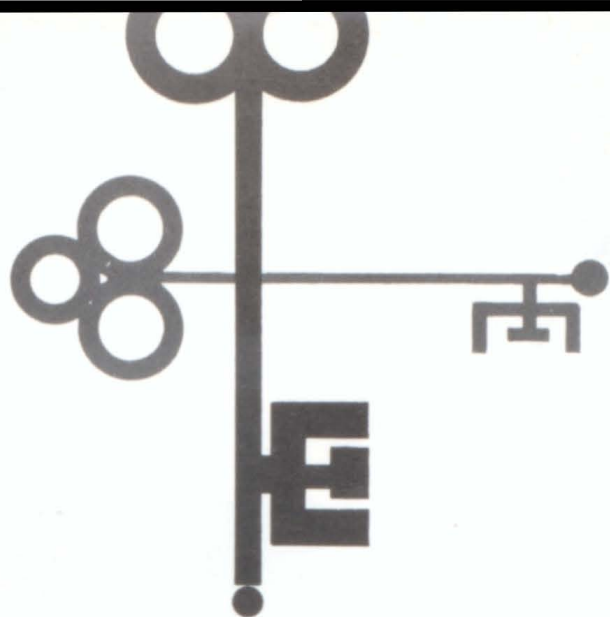
Dianne Gillham is a school teacher. She is married and has four children of her own. Incidentally, she was late as usual.

Hope I haven't forgotten anyone. They all seemed so happy to see me and most of them could hardly believe it possible for me to be so thin.

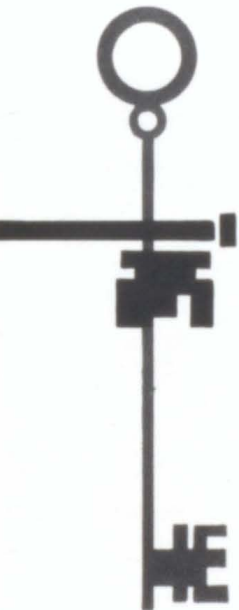
Sincerely yours,

R. W. Chambers

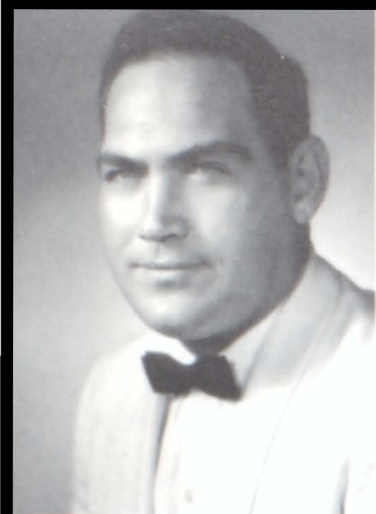




# SENIORS







GEORGE RAU  
Sponsor



RUTH MOSSLANDER  
Sponsor

*Ruth Mosslander*



WILLIAM COFFMAN  
Sponsor

STEVE POTTS  
Football 1, 2, 3, 4; Track 1,  
2, 3; Science Club 4; Boy's  
Glee Club 1, 2, 3, 4; Mixed  
Chorus 1, 2, 3, 4; Y. F. C.  
Club President 3, 4.



President

## Caney Valley Historical Society

### Student Council



MIKE CLARK  
Peru High School 1; Band 2;  
Boy's Glee Club 3, 4; Mixed  
Chorus 3, 4; Kays 3, 4, Board  
3; Playmakers 3, 4; F. B. L. A.  
4; Football 3; Golf 3, 4;  
Student Council 3, 4.

JANET BRYAN  
Kayettes 1, 2, 3, 4, Board 3;  
Playmakers 2, 3, 4; F. B. L. A.  
3, 4; Sigma Alpha 3, 4; French  
Club 2; Band 1, 2, 3, 4, Vice-  
President 3; Class Treasurer  
1; Girl's State; Yearbook  
Staff 4; Football Queen At-  
tendant 1, 3; Basketball  
Queen Candidate 3, 4,  
Queen 4.



Secretary



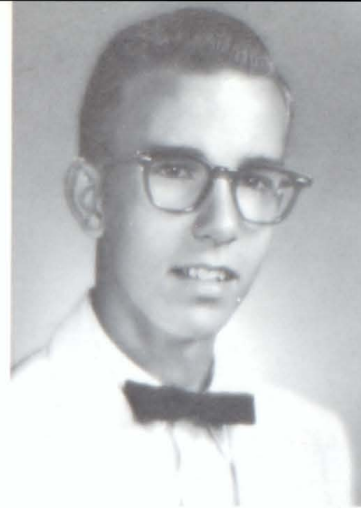
MAX ARMITAGE  
F. F. A. 1, 2, 3, 4; Annual  
Staff 4.



PATTIE GLATFELDER  
Kayettes 1, 2, 3, 4, Board 3,  
President 4; Band 1, 2, 3, 4,  
Officer 4; F. B. L. A. 3, 4,  
Officer 3; Mixed Chorus 2,  
3, 4; Girl's Glee Club 2, 3,  
4; Student Council 3, 4;  
Serenaders 3, 4.



RONNIE ODOM  
 Band 1; Mixed Chorus 1, 2, 3, 4; Boy's Glee Club 1, 2, 3, 4; Mixed Ensemble 4; Kays 1; Sigma Alpha 1, 2, 3, 4; Science Club 3, 4, Vice-President 4; Math and Science Camp 3; Basketball 1, 2; Golf 1, 2, 3, 4; Letterman's Club 2, 3, 4.



LORETTA GROTHER  
 Band 1, 2, 3, 4; Kayettes 2, 3, 4, Board 4; Office Girl 4.

FORREST NOAH  
 Kays 1, 2, 3; Sigma Alpha 1, 2, 3; Track 3; Football 4.

CAROLYN MATTIX  
 Mixed Chorus 1; Girl's Glee Club 1; Band 1, 2, 3, 4; Kayettes 1, 2, 4; French Club 2.



Vice-President

## Caney Valley Historical Society

FRANK HUFFMAN  
 Basketball 1, 2, 3, 4; Football 1, 2, 3, 4, Co-Captain 4; Golf 1, 2, 3, 4; Playmakers 4; Boy's Glee Club 4; Yearbook Staff 4; Letterman's Club 1, 2, 3, 4; Kays 4; Student Council 3, 4, Vice-President 3; F.B.L.A. 4; Mixed Chorus 4.

CAROLYN LESSMAN  
 Kayettes 1, 2, 3; Playmakers 2, 3, 4; Girl's Glee Club 1, 2; Mixed Chorus 1, 2; F.B.L.A. 3, 4, Treasurer 4.



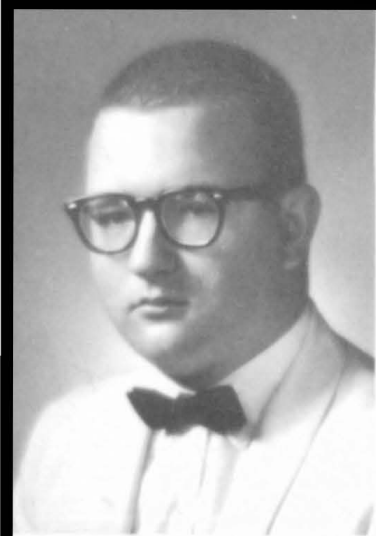
Treasurer

HOWARD KENNEDY  
 Kays 1; Boy's Glee Club 2, 4; Mixed Chorus 2, 4; Playmakers 1, 2, 3, 4; F.B.L.A. 4; Football Manager 1, 2.

KAY O'SHIELDS  
 Kayettes 1, 2, 3; Girl's Glee Club 1, 2, 3, 4; Mixed Chorus 1, 2, 3, 4.



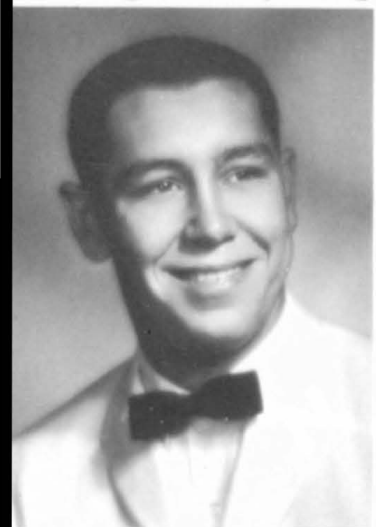




DENNIS WAKELAND  
Golf 2, 3; Sigma Alpha 3;  
Science Club 3, 4.



DONNA PARKER  
Kayettes 1, 2, 3, 4, Board 2,  
3; Band 1, 2, 3, 4; Mixed  
Chorus 1, 2, 3; Girl's Glee  
Club 1, 2, 3; F.B.L.A. 4;  
Playmakers 4; Football  
Queen Attendant 4; Pepper-  
ettes 3; Cheerleader 3.

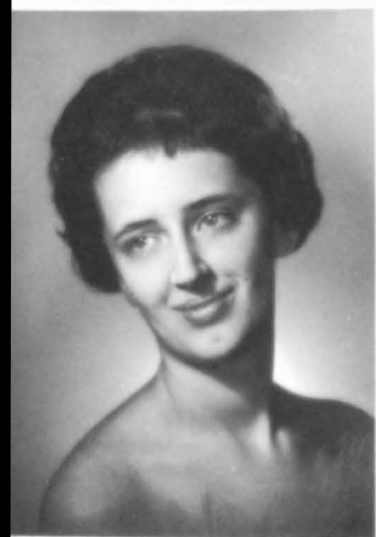


DANNY MCGINNIS  
Basketball 1, 2, 3, 4; Football  
1, 2, 3, 4; Track 1, 2; Letter-  
man's Club 1, 2, 3, 4, Sec-  
retary 3; Playmakers 3, 4,  
President 4; Boy's Glee Club  
4; Mixed Chorus 4; Kays 3,  
4; F.B.L.A. 4, Yearbook  
Staff 4.

TIM FULTON  
F. F. A. 1, 2, 3, 4; Football  
1, 2, 3, 4; Playmakers 2, 4;  
Letterman's Club 2, 4.

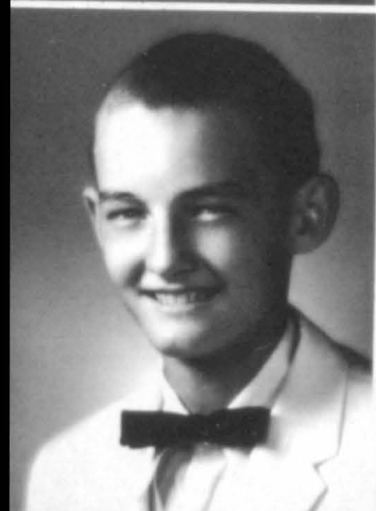
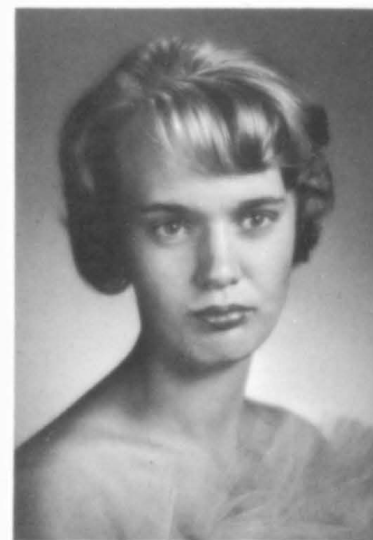


## Caney Valley Historical Society



KAREN LANE  
Kayettes 1, 2, 3; Girl's Glee  
Club 1, 2, 3, 4; Mixed Chorus  
1, 2, 3, 4; Office Girl 4.

ANNE PINNER  
Saint Francis Academy 1;  
Edna High School 2; Play-  
makers 3, 4; F.B.L.A. 4;  
Girl's Glee Club 3, 4; Mixed  
Chorus 3, 4; Girl's Ensemble  
3; Yearbook Staff 4; Mixed  
Ensemble 4; Sigma Alpha 4.



GENE HOCKETT  
F. F. A. 4.



KAREN NELSON  
Tahlequah High School 1, 2;  
Sigma Alpha 3; F.B.L.A. 3,  
4; Playmakers 4; Girl's Glee  
Club 3, 4; Mixed Chorus 3,  
4; Kayettes 3, 4; Pepperettes  
4.



BOYD NEWBY

F.F.A. 1, 2, 3, 4, Secretary 2, Treasurer 3, President 4; F.F.A. Judging Team 1, 2, 3, 4; Playmakers 4; Sigma Alpha 1; Boy's State 3

RUTH MUCK

Band 1, 2, 3, 4; Girl's Glee Club 1, 2, 3, 4; Mixed Chorus 1, 2, 3, 4; Girl's Ensemble 2, 3, 4; Serenaders 3, 4; French Club 2; Yearbook Staff 4; Playmakers 1, 2, 3, 4; Mixed Ensemble 1, 4.



KENT NOTESTINE

Golf 1, 2, 3, 4; Football 1, 3; F.B.L.A. 4; Student Council 4; Kays 2, 3; Mixed Chorus 3; Boy's Glee Club 3; Basketball 1, 2.

LINDA MARSHALL

Kayettes 1, 2, 3; Mixed Chorus 3; Girl's Glee Club 3; F.B.L.A. 4, Secretary 4; Football Queen Attendant 3, 4; Playmakers 4.



Caney Valley Historical Society



MIKE HAIT

Football 1, 3, 4; Basketball 1; Boy's Glee Club 3, 4; Mixed Chorus 3, 4; Playmakers 4.

DIANNE GILLHAM

Student Council 2; F.B.L.A. 3, 4, Reporter 4; Kayettes 1, 2, 3, 4, Board 1, 3; Pepperettes 1, 2, 3, 4, Officers 2, 3, 4; Cheerleader 1, 3; Girl's Glee Club 1, 2, 3, 4; Mixed Chorus 1, 2, 3, 4; Playmakers 2, 4; French Club 2; Basketball Queen Candidate 2.

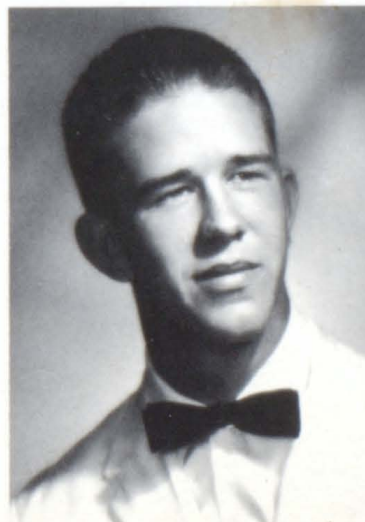


CHUCK GREGG

Mixed Chorus 1, 2, 3, 4; Boy's Glee Club 1, 2, 3, 4; Mixed Ensemble 4; Football 1, 3, 4; Basketball 1, 2, 3; Track 2; Letterman's Club 2, 3, 4; Kay 4; Student Council President 3; Annual Staff 4.

PRISCILLA ROBERTSON

Broken Arrow High School 1, 2; Girl's Glee Club 3, 4; Mixed Chorus 3, 4.

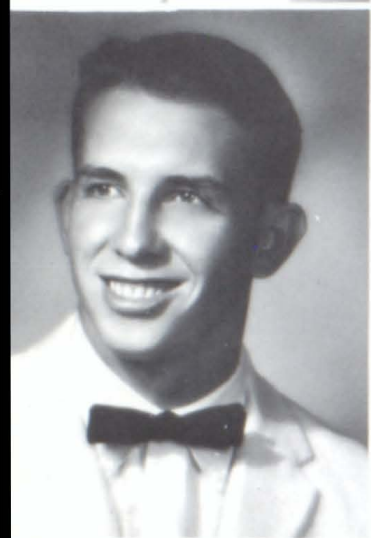






MIKE SCIMECA  
Football 1; Basketball 1, 2;  
Golf 1, 2, 3, 4; Kays 1, 2, 3,  
4; Band 1, 2; Letterman's  
Club 2, 3, 4; Playmakers 2,  
3, 4; Boy's Glee Club 3, 4;  
Mixed Chorus 3, 4; Student  
Council 3, 4; F.B.L.A. 4.

BARBARA KOONTZ  
Sigma Alpha 1, 2, 3, 4,  
Secretary-Treasurer 4; Mixed  
Chorus 1, 2, 3, 4; Girl's Glee  
Club 1, 2, 3, 4; Girl's Ensemble  
2, 3; Mixed Ensemble 1, 4.



STANLEY PRICE  
Basketball 1, 3, 4; Football  
1, 2, 3, 4; Track 3; Boy's  
Glee Club 1, 2, 3, 4; Mixed  
Chorus 1, 2, 3, 4; Playmakers  
3, 4, Vice-President 4;  
Yearbook Staff 4; Letterman's  
Club 2, 3, 4; Kays 1; Student  
Council 1; Class Vice-Presi-  
dent 2; F.B.L.A. 4, Sec-  
retary 4; Football Co-  
Captain 4.

CLAYTON DEAN  
F.F.A. 2, 3, 4; Judging Team  
3, 4, Officer 4; Basketball 1.



## Caney Valley Historical Society



JOYCE HANNEGAN  
Mixed Chorus 1, 2, 3, 4; Girl's  
Glee Club 1, 2, 3, 4; Band 1,  
2; Playmakers 3, 4; F.B.L.A.  
3, 4; Kayettes 1, 2; Yearbook  
Staff 4.

SANDRA WHITE  
Mixed Chorus 3, 4; Girl's  
Glee Club 3, 4; Kayettes 1;  
Pepperettes 1, 2, Vice-Pres-  
ident 1; Class Secretary 2;  
Football Queen Candidate  
1; Denver South High School.  
3.



ARLENE VINING  
Mixed Chorus 1, 2, 3, 4; Girl's  
Glee Club 1, 2, 3, 4; Kayettes  
1, 2, 3, 4; Vice-President 4;  
Pepperettes 1, 2, 3, 4; Treas-  
urer 3, 4; Playmakers 4;  
F.B.L.A. 3, 4, President 4;  
Yearbook Staff 4; Student  
Council 4; Sigma Alpha 1,  
2, 3, 4; Girl's State.

SUE VAUGHT  
Pepperettes 1, 2, 3; Cheer-  
leader 1, 2, 3; Kayettes 1;  
Student Council 1; Mixed  
Chorus 1, 2, 3, 4; Girl's Glee  
Club 1, 2, 3, 4; F.B.L.A. 3,  
4.



**JUNIOR MOORE**  
Sigma Alpha 1, 2, 3, 4;  
Science Club 3; Student  
Council 4; Football 1; Boy's  
State Alternate.

**ERAINA BRINKLY**  
Okmulgee High School 1;  
Girl's Chorus 2, 3, 4; Girl's  
Ensemble 3; Mixed Chorus  
2, 3, 4; Mixed Ensemble 4;  
Playmakers 3, 4; F. B. L. A.  
3, 4; Kayettes 3.

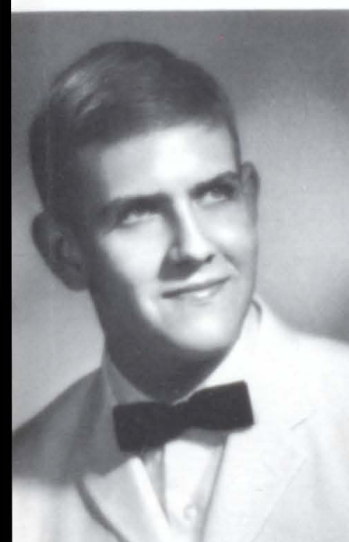


**JERRY MEYER**  
Basketball 1, 3; Class Treas-  
urer 1; Mixed Chorus 2, 3, 4;  
Boy's Glee Club 2, 3, 4; Kays  
2, 3, 4, President 4; Play-  
makers 3; Yearbook Staff 4;  
French Club 2.

**JUDY HEAPES**  
Girl's Glee Club 3, 4; Mixed  
Chorus 3, 4; Office Girl 3;  
Playmakers 4; Mixed Ensem-  
ble 4; Pepperettes 1;



## Caney Valley Historical Society



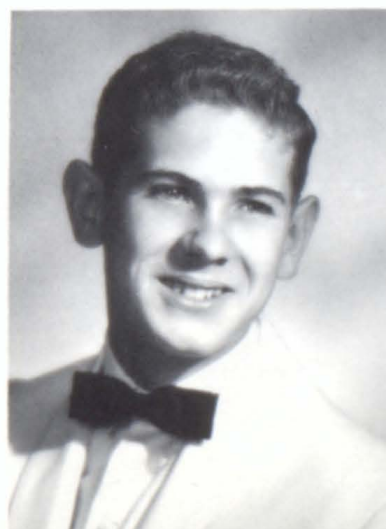
**JOHN WINKLER**  
Mixed Chorus 1, 2, 4; Boy's  
Glee Club 1, 2, 4; Kays 1,  
2; Mixed Ensemble 1, 4;  
Playmakers 1, 2; Band 1, 2;  
4; Sigma Alpha 1, 2, 3, 4;  
Music Camp 3; Band Camp  
1, 2; Serenaders 1, 2.

**DONNA BARRETT**  
Girl's Glee Club 2, 3, 4; Mix-  
ed Chorus 2, 3, 4; Playmakers  
4; F. B. L. A. 3, 4; Kayettes  
1, 2; Pepperettes 1, 2, 3;  
Cheerleader 1, 2, 3.



**BILLY COFFMAN**  
Schell City High School 1;  
Havana High School 2, 3;  
Kays 4; Playmakers 4;  
F. B. L. A. 4; Boy's Glee  
Club 4; Mixed Chorus 4;  
Basketball 4; Track 4.

**LINDA LOWRY**  
Mixed Chorus 1, 2, 3, 4; Girl's  
Glee Club 1, 2, 3, 4; Kayettes  
1, 2, 3.







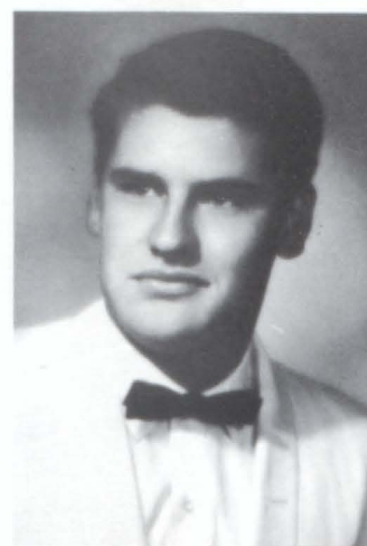
ALLEN HARRISON  
F.F.A. 1, 2, 3, 4, Judging  
Team 2, 3, 4, Vice-President  
4.

MARTA BUSTER  
Kayettes 1; Pepperettes 4;  
Cheerleader 1, 4; Playmakers  
3, 4, Treasurer 4; F.B.L.A.  
4; Basketball Queen Candi-  
date 2; Yearbook Staff 4;  
Office Girl 2, 4.



DICK HARRIS  
Basketball 1, 2, 3, 4; Football  
1, 3, 4; Track 2; Mixed Cho-  
rus 1, 2, 3, 4; Boy's Glee Club  
1, 2, 3, 4; Playmakers 4;  
Kays 1, 2, 3; Letterman's  
Club 2, 3, 4; F.B.L.A. 4.

DAVID TROUTMAN  
F.F.A. 1, 2, 3, 4, Judging  
Team 2, 3, 4, Officer 4;  
Football 3; Playmakers 4.



## Caney Valley Historical Society



SHARON PAYNE  
Mixed Chorus 4; Girl's Glee  
Club 4; Playmakers 4;  
F.B.L.A. 4.

VICKI IBACH  
Kayettes 1, 2, 3, 4, Board 1,  
2, 3, 4, Treasurer 3; Play-  
makers 4; F.B.L.A. 3, 4;  
Vice-President 4; Girl's  
Glee Club 1, 2, 3, 4; Mixed  
Chorus 1, 2, 3, 4; Yearbook  
Staff 4; Cheerleader 1;  
Girl's State Alternate.



EDDIE SMITH



DIANA BRIGHT  
Mixed Chorus 1, 2, 3, 4; Girl's  
Glee Club 1, 2, 3, 4; Kayettes  
1; Pepperettes 1; Cheerleader  
1; F.B.L.A. 3, 4; Playmakers  
4.

MARILYN DURSCHERL  
Class Secretary 3; Kayettes  
1, 2, 3, 4, Board 3, 4; Sigma  
Alpha 1, 3, 4; Student Council  
4, Secretary-Treasurer  
4; Band 1, 2, 3, 4, President  
4; Mixed Chorus 1, 2, 3, 4;  
Girl's Glee Club 1, 2, 3, 4;  
Mixed Ensemble 4; Serenaders  
4; Girl's State Alternate; Music  
and Art Camp 2; Emporia Music  
Camp 3.

ROBERT COURTRIGHT  
Class President 1, 3; Class  
Treasurer 2; Student Council  
4; Basketball 3, 4; Football  
3, 4; Track 3, 4; Boy's Glee  
Club 2, 3, 4; Mixed Chorus  
2, 3, 4; Kays 3, 4; Boy's State;  
Letterman's Club 3, 4.



SHARON HARRIS  
Class Treasurer 3; Band 1,  
2, 3, 4; Serenaders 3, 4; Mixed  
Chorus 1, 2, 3, 4; Girl's Glee  
Club 1, 2, 3, 4; Kayettes 1,  
2, 3, 4, Officer 3, 4; Sigma  
Alpha 2, 3, 4; Student Council  
3, 4, Vice-President 4;  
Playmakers 4.

FLOYD STOCKWELL



## Caney Valley Historical Society



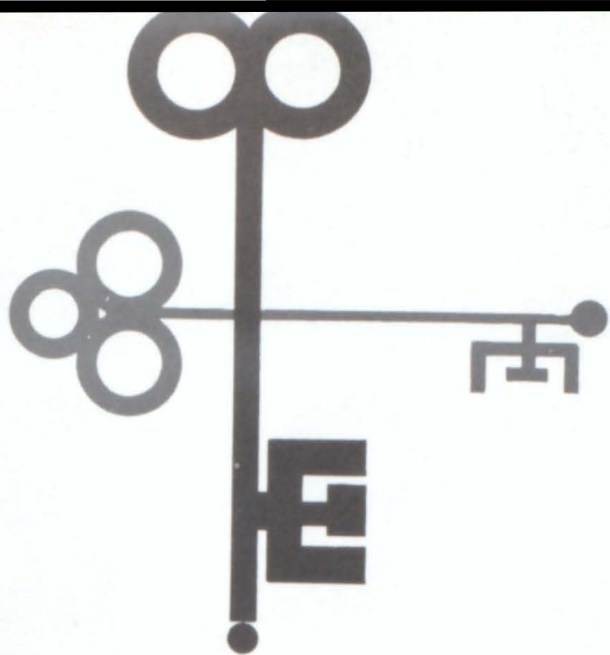
PATSY HINMAN



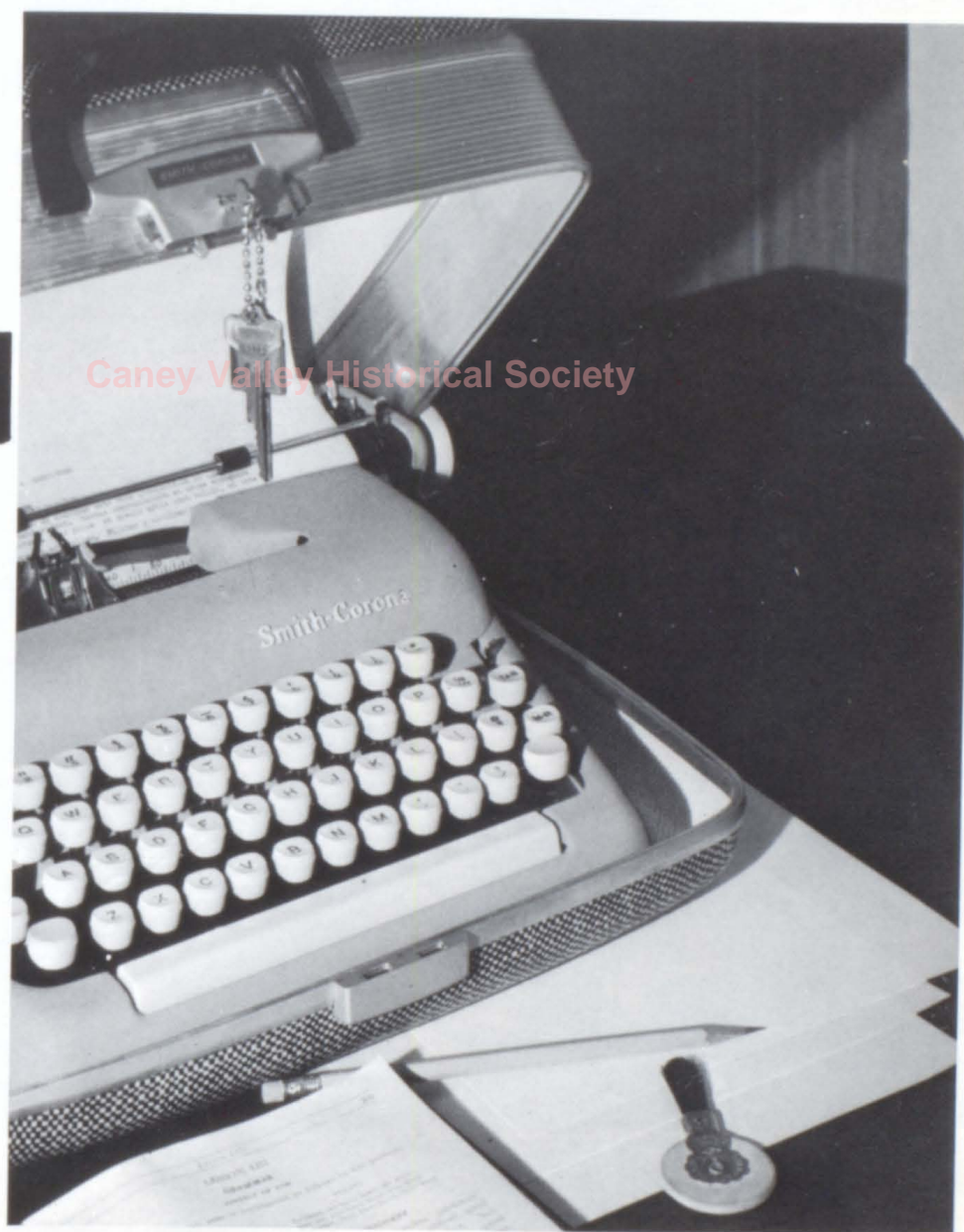








# JUNIORS



Caney Valley Historical Society







## JUNIORS

LEFT TO RIGHT, OFFICERS: Randy Johnson, president, Rudy Taylor, vice-president, Marthena Burch, secretary, Kathy George, treasurer, Scott Hollopeter, student council. FIRST ROW: Dennis Alston, Darlene Antle, Harold Baker. SECOND ROW: Roy Barnhart, James Barnett, Larry Blagg. THIRD ROW: Mr. Field, sponsor, Mrs. Tyler, sponsor, Mr. Taylor, sponsor.



Caney Valley Historical Society

LEFT TO RIGHT, FIRST ROW: Steve Boggs, John Brown, Marthena Burch. SECOND ROW: Floretta Casey, Johnnie Chastain, Gary Coker, Steve Coltharp, Bill Cowan, Mickey Crocker. THIRD ROW: Lewis Dean, DeAnn Dick, Lanell Earhart, Mary Beth Eden, Loyd Fields, Martha Franks.







LEFT TO RIGHT, FIRST ROW: John Freisberg, Kathy George, Raymond Griffin, Sheri Heapes, David Hoad, Jim Hockett. SECOND ROW: David Holeman, Scott Hollopeter, Randy Johnson, Michael Cushman, Kenneth Jones, Rosa Knotts. THIRD ROW: Janice Land, Judy Long, Tommy Lynn.



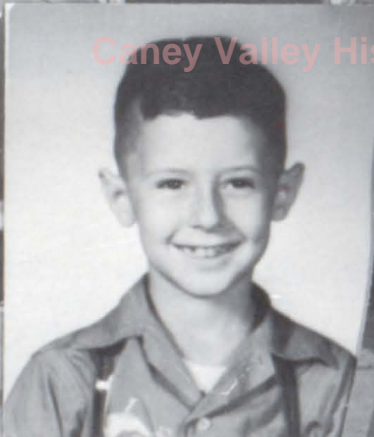
### Caney Valley Historical Society



LEFT TO RIGHT, FIRST ROW: Regina Meyers, Terry Miller, Duffy Morency. SECOND ROW: Phillip McKee, Jerry Orcutt, Dollie Phillips, Diana Pittman, Merideth Robison, Louie Ross. THIRD ROW: Glenn Shafer, Tommy Shafer, Nancy Shaw, Linda Smith, Rudy Taylor, Norma Williams.









# SOPHOMORES







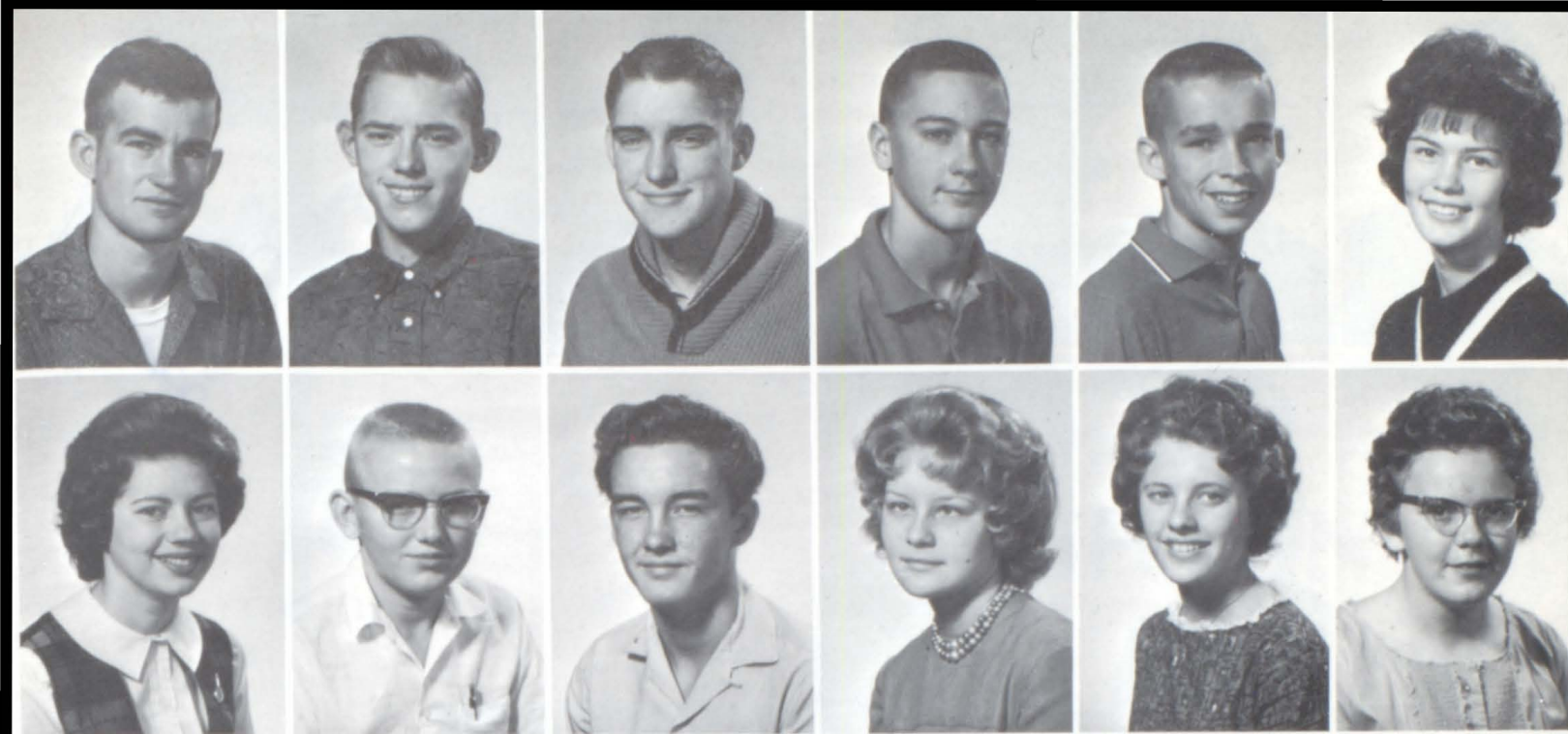
## SOPHOMORES

LEFT TO RIGHT, OFFICERS: Susan Parker, president, Patty Sullivan, vice-president, David Franks, secretary, Leo Stevens, treasurer, Dennis Rogers, student council. FIRST ROW: Jennifer Allison, Alfred Ashford, Jim Atkinson. SECOND ROW: Barbara Atterberry, JoAnn Avery, Pamela Barth. THIRD ROW: Mr. Davis, sponsor, Mrs. Brown, sponsor, Mr. Buckner, sponsor.

LEFT TO RIGHT, FIRST ROW: Jackie Billups, Gerald Brisco, Gary Bronnenberg. SECOND ROW: Janice Bronnenberg, Jerry Browning, Sherrill Call, Lee Campbell, Ella Casper, Roseann Chambers. THIRD ROW: George Cowan, Suzanne Culver, Diana Daniel, John Dumond, Robert Eden, Ronnie Ernest.







LEFT TO RIGHT, FIRST ROW: Gary Finney, David Franks, Richard Giblin, Ronnie Glatfelder, Gary Hale, Peggy Harrison. SECOND ROW: Kathy Haynes, Danny Hoad, Jerry Hockett, Bonnie Hollis, Sheryl Ibach, Myrtle Ingerson. THIRD ROW: Lana Kannard, Jim Kidwell, LeRoy King.



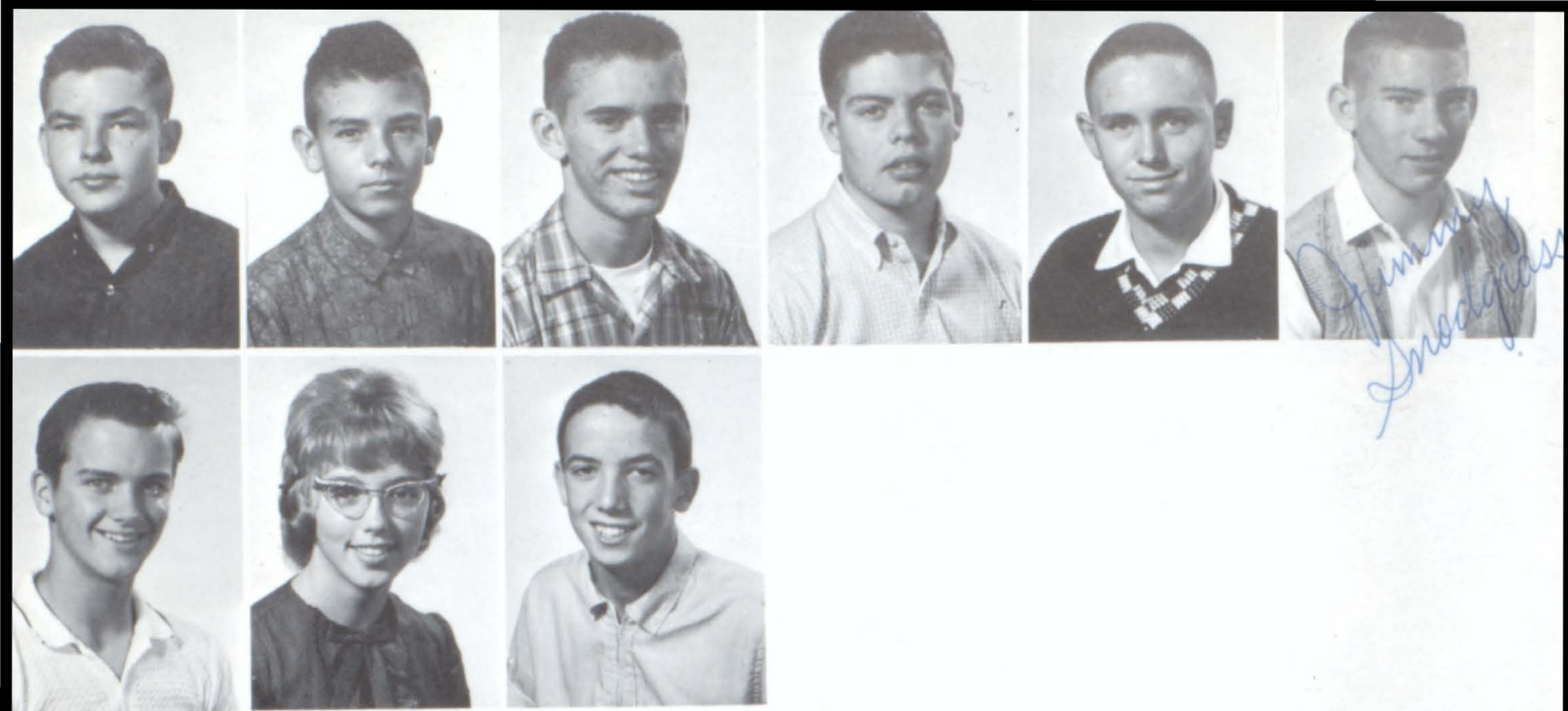
Caney Valley Historical Society



LEFT TO RIGHT, FIRST ROW: John King, Ronnie Koger, Barbara McDowell. SECOND ROW: Larry Mason, Bob Mason, Jim Meyer, Alfred Morrison, Sheryl Murphy, Susan Parker. THIRD ROW: Cynthia Pearsall, Pattie Perkins, Johnny Perry, Charles Redding, Dennis Rogers, Carolyn Ryan.







LEFT TO RIGHT, FIRST ROW: Terry Shinn, Leonard Shook, Jay Shrock, Philip Smith, Tony Smith, Jim Snodgrass. SECOND ROW: Leo Stevens, Patty Sullivan, Douglas Taylor. THIRD ROW: Dan Thomas.

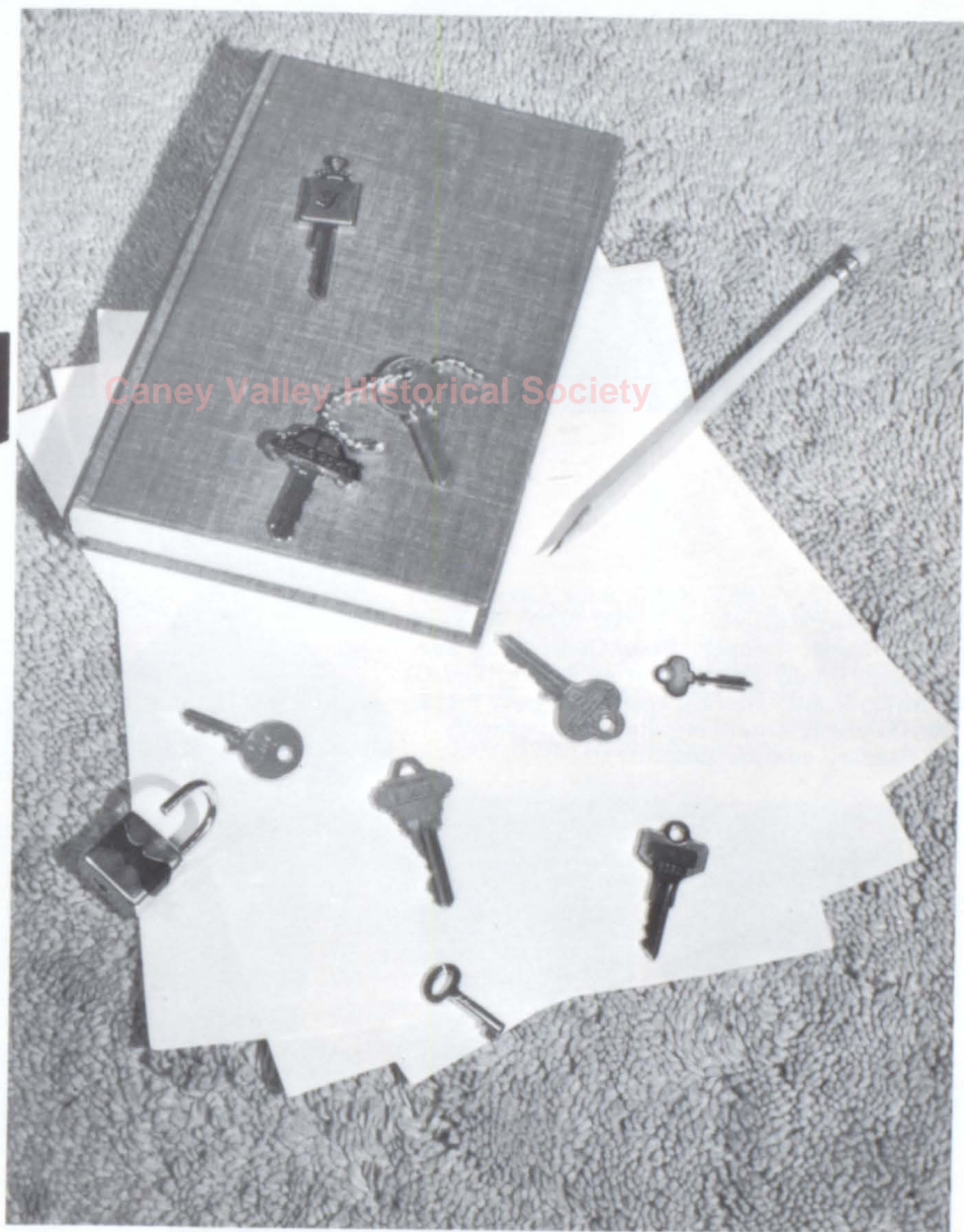
## Caney Valley Historical Society

LEFT TO RIGHT, FIRST ROW: James Thomas. SECOND ROW: Linda Todd, Jim Tormey, Linda Troutman. THIRD ROW: Joe VanZandt, Nelson Vernon, Clinton Walls, Cheryl Whetstine, Ellen White, Kenneth Williamson.





# FRESHMEN



Caney Valley Historical Society





## FRESHMEN

LEFT TO RIGHT, OFFICERS: Treva Taylor, president, Freddy Toner, vice-president, Linda Leonard, secretary, Sue Ducummon, treasurer, Roger Burch, student council. FIRST ROW: Linda Allison, Cindy Bæhl, Mike Boles. SECOND ROW: Judy Brinkley, Roger Burch, Larry Carlile. THIRD ROW: Mrs. De-Nelsky, sponsor, Mr. Armstrong, sponsor, Mrs. Ready, sponsor.

Caney Valley Historical Society

LEFT TO RIGHT, FIRST ROW: Alex Carra, John Carter, Tommy Catlett. SECOND ROW: Maxine Chrisman, Nancy Cooper, Patty Courtright, Sue Ducummon, Danny Edens, Shirley Edens. THIRD ROW: Mike Fichtl, Melvin Finney, Randy Fuqua, Charles Harrison, David Hindle, not pictured; Phillip Hindle, not pictured.







LEFT TO RIGHT, FIRST ROW: Linda Houser, Edith Hughes, Tom Holeman, John Kelly, Ruby King, Linda Leonard. SECOND ROW: Cletz Lutz, Cheryle Mason, Dorothy Meyer, Jim Meyer, Toni Mitchell, Louise Mooney. THIRD ROW: Dale McBride, Bobby McGinnis, Peggy Nash.

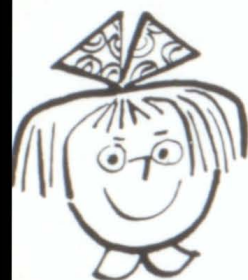
### Caney Valley Historical Society



LEFT TO RIGHT, FIRST ROW: Jack Orcutt, Joye Orcutt, Jim O'Shields. SECOND ROW: Lloyd Payne, Tim Perkins, Darrel Pocock, Joyce Pratt, David Presley, Bradley Price. THIRD ROW: Wendell Price, Ramona Robertson, Jan Rogers, Jean Rogers, Judy Ross, Danny Salisbury.







LEFT TO RIGHT, FIRST ROW: Lawrence Scott, Delores Shafer, Jackie Simpson, not pictured, Tom Simpson, Anna Tate. SECOND ROW: Treva Taylor, Lois Theiss. THIRD ROW: Charlotte Thomas, not pictured.

## Caney Valley Historical Society

LEFT TO RIGHT, FIRST ROW: Thomasa Thomas. SECOND ROW: Freddie Toner, Paula Tormey, Patricia Vernon. THIRD ROW: Julie Wakeland, Dennis Weber, Kenneth Wooten, Linda Wooten, Linda Young.





## EIGHTH GRADE



LEFT TO RIGHT, FIRST ROW: Janie Windle, Charlene Carey, Mariam Richey, Bessie Cowan, Susan Fields, Carolyn Crocker, Sherry Pearsall, Donna Dick, Cheryl Gilliland, Donna Henderson, Martha Hait, Joyce Dufoe, Mary Morrison. SECOND ROW: Ronnie Etter, Sheila Ashford, Flossie Ross, Arvilla Lamb, Landa Moreland, Marjorie Billups, Sheryl Layton, Lynn Bowen, Kathy Land, Carol Coker, Mary Dale Robbins, Anna Lee Thomison, Charles Mattix, Mrs. Franks, sponsor. THIRD ROW: Carl Perry, Jimmy Alston, John Short, Robert Haughn, Darlene Taylor, Cathy McCay, Patty Messner, Sharon Heapes, Sharon Miller, Don Wilson, Douglas Walls, Charles Jackson, Dennis Henderson, Mr. Guthrie, sponsor. FOURTH ROW: Mr. Bale, sponsor, William Nelson, Douglas Kincaid, Bill Bailey, Jerry Hockett, Vernon Soles, Jackie Bolden, Robbie Scimeca, John Sanborn, Tony Smith, Terry Trimble, Donald Muck, Danny Ross, Steve Pendleton, John Pinner, Johnny Ross, Owen Mooney.

## SEVENTH GRADE



LEFT TO RIGHT, FIRST ROW: Dale Holeman, Tommy Munday, John Ritchey, Larry Thompson, Tracy Bradford, John Carlile, Terry McClure, Charles Thomas, David Robbins, Gregg Mitchell. SECOND ROW: Tommy Leanord, Jimmy Culver, Jacquetta Brinkley, Renie Kannard, Pam Murphy, Mary Woolsey, Crystal Geddes, Peggy Young, Dianne Alston, Barbara Allison, Juanita Dufoe, Elva Blakemore, Shari Cutler, Donna Robbins, Mr. Hoffman, Sponsor. THIRD ROW: Steve Pendleton, Kelly Gramham, Jesse Hall, Sherman Hyatt, Mike Walker, Cal Eden, Jeanne Holeman, Linda Avery, Wilma Carriendar, Emma Lou Todd, Debbie Hockett, Phil Parker, Gwendora Finney. FOURTH ROW: Mr. Henson, Sponsor, Eddie Osborn, Charles McCay, Clair Sircoulomb, Gary Baxter, Ronnie Mitchell, Vicki Smith, Vivan Sharp, Samma Comer, Lee Coltharp, Mike McMillen, Ronald Wilson, Jack Hockett, Eugene Chastain.





## JR. KAYETTES

LEFT TO RIGHT, FIRST ROW: C. Crocker, D. Taylor, D. Dick, R. Kanner, A. Thomison, Mrs. Readey, sponsor. SECOND ROW: M. Woolsey, D. Robbins, B. Cowan, S. Fields, S. Pearsall, C. Gilliland, C. McCay, C. Geddes, G. Finney, P. Murphy. THIRD ROW: S. Comer, M. Hait, P. Messner, F. Ross, S. Ashford, A. Lamb, S. Layton, P. Young, D. Hockett, V. Sharp, W. Carinder. FOURTH ROW: V. Smith, M. Robbins, C. Coker, S. Heape, S. Miller, J. Holeman, M. Morrison, J. Windle, M. Billups, L. Moreland.

Caney Valley Historical Society

## JR. KAYS



LEFT TO RIGHT, FIRST ROW: T. Bradford, L. Thompson, T. McClure, R. Haughn, D. Ross, P. Parker, T. Leonard, J. Short. SECOND ROW: J. Carlile, C. Mattix, R. Wilson, J. Sanborn, T. Smith, R. Cochran, C. McCay, G. Mitchell, S. Pendleton. THIRD ROW: J. Culver, E. Osborn, C. Sircoulomb, D. Muck, T. Trimble, B. Bailey, J. Hockett. FOURTH ROW: R. Shaw, R. Scimeca, S. Hyatt, S. Pendleton, D. Kincaid, J. Pinner, J. Ross, D. Wilson, Mr. Bale, sponsor. FIFTH ROW: M. Walker, G. Baxter, R. Mitchell, V. Soles, L. Coltharp.



# JUNIOR BAND



LEFT TO RIGHT, FIRST ROW: D. Kincaid, M. Hait, L. Moreland, C. McCay, J. Pinner, M. Richey, C. Gilliland. SECOND ROW: D. Dick, S. Pearsall, M. Billups, J. Holeman, W. Carinder, B. Cowan, D. Muck, M. Walker, R. Cochran, L. Coltharp, P. Parker, C. Mattix, C. Crocker. THIRD ROW: F. Parks, P. Messner, B. Bailey, T. Bradford, J. Richey, S. Comer, S. Fields, R. Mitchell, J. Bolden, C. McCay, T. Munday, S. Pendleton, C. Eden, R. Scimeca, R. Etter, J. Sanborn. FOURTH ROW: W. Nelson, V. Smith, Mr. Beery, director, B. Mitchell, D. Taylor.



Donna Dick, twirler,  
Marjorie Billups, majorette,  
Cheryl Gilliland, twirler.



# JUNIOR HIGH BASKETBALL

## FRESHMEN

LEFT TO RIGHT, FIRST ROW: J. Meyer, D. Salisbury, B. Price, R. Burch, W. Price. SECOND ROW: Coach George Rau, D. Presley, F. Toner, D. Edens, B. McGinnis, J. O'Shields, M. Boles, P. Hindle.



## 7TH GRADE

LEFT TO RIGHT, FIRST ROW: J. Hockett, J. Carlile, R. Cochran, T. Bradford, E. Chastain, D. Holeman, C. Thomas, T. McClure. SECOND ROW: S. Pendleton, J. Culver, E. Osburn, P. Parker, M. McMillon, C. McCay. THIRD ROW: R. Robertson, R. Jamison, C. Sirculumb, C. Eden, R. Mitchell, M. Walker, S. Hyatt, G. Baxter, Coach Horace Taylor.



## 8TH GRADE

LEFT TO RIGHT, FIRST ROW: R. Haughn, C. Mattix, D. Kincaid, J. Pinner, R. Scimeca. SECOND ROW: J. Sanborn, T. Trimble, T. Smith, D. Ross, S. Pendleton, Coach Horace Taylor.





# ACTIVITIES



Canby Valley Historical Society





Sharon Harris  
Vice-President



Bob Courtright  
President



Marilyn Durscherl  
Secretary-Treasurer

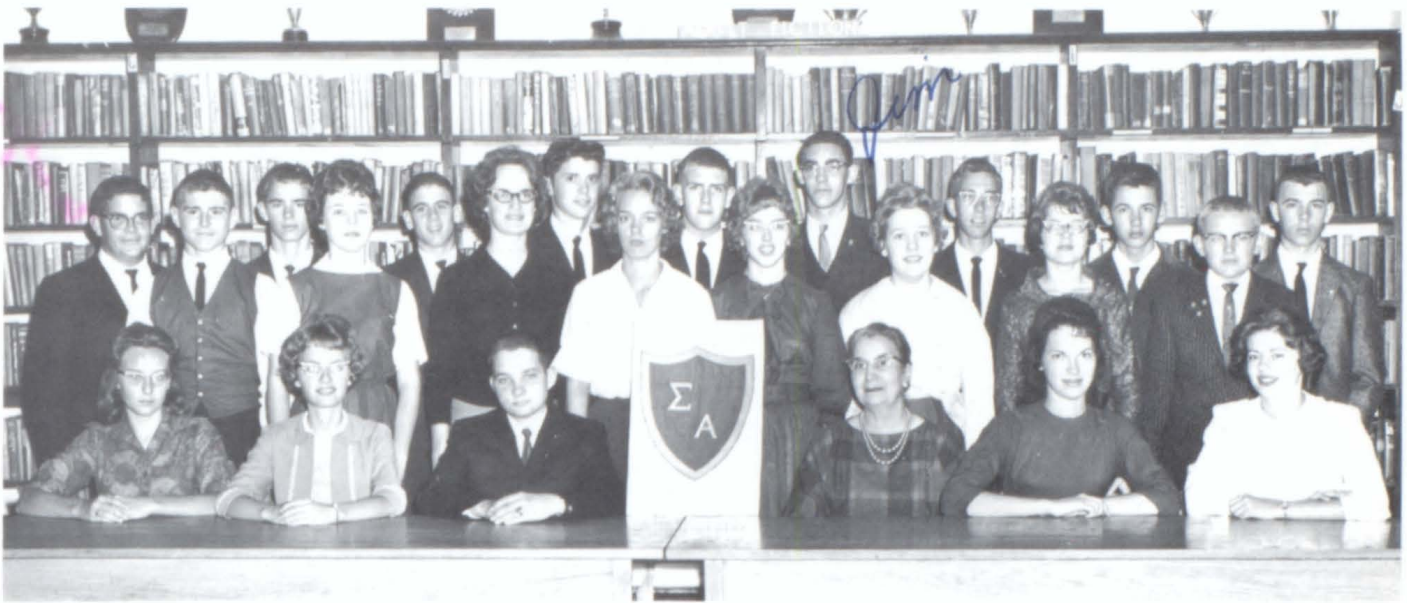
## STUDENT COUNCIL



LEFT TO RIGHT, SEATED: Russell Chambers, sponsor, Sharon Harris, Bob Courtright, Marilyn Durscherl, Ralph Fields, sponsor. FIRST ROW: Roger Burch, Darlene Taylor, Pattie Glatfelder, Arlene Vining, Cathy McCay, Patty Courtright, Tommy Leonard. SECOND ROW: Dennis Rogers, Scott Hollopeter, Mike Clark, Roy Barnhart, Mike Scimeca, Frank Huffman, Robert Haughn.



# SIGMA ALPHA



LEFT TO RIGHT, SEATED: S. Harris, B. Koontz, J. Moore, Mrs. Tyler, sponsor, N. Williams, K. Haynes. FIRST ROW: S. Hollopeter, J. Bryan, A. Vining, A. Pinner, P. Sullivan, D. Phillips, M. Durscherl, D. Hoad. SECOND ROW: J. Barnett, J. Shrock, D. Rogers, R. Koger, J. Winkler, J. Kidwell, R. Odom, G. Shafer, B. Mason.

## Caney Valley Historical Society ZETA SIGMA



LEFT TO RIGHT, SEATED: J. Barnett, R. Odom, M. Cushman, B. Mason. FIRST ROW: J. Van Zandt, L. Carlile, D. Shafer, D. Weber, A. Carra. SECOND ROW: Mr. Bale, sponsor, M. Boles, T. Catlett, R. Koger, J. Kidwell, D. Wakeland, S. Potts, S. Hollopeter, G. Shafer.



# SENIOR KAYETTES



FIRST ROW, LEFT TO RIGHT: M. Franks, A. Vining, P. Glatfelder, S. Harris. SECOND ROW: D. Gillham, M. Durscherl, J. Long, S. Culver, D. Dick, S. Ibach, M. Burch, S. Call, J. Billups, V. Ibach, J. Bronnenberg, C. Mattix. THIRD ROW: D. Antle, D. Pittman, L. Allison, J. Bryan, K. Haynes, P. Sullivan, P. Perkins, K. George, M. Robison. FOURTH ROW: C. Mason, N. Shaw, D. Phillips, L. Grother, P. Harrison, J. Allison, C. Pearsall, L. Leonard. FIFTH ROW: K. Nelson, P. Barth, B. Atterberry, D. Parker, N. Williams. SIXTH ROW: Mrs. Dow, sponsor, R. Chambers, E. Hughes, L. Theiss, L. Houser, C. Lutz.

Caney Valley Historical Society

# SENIOR KAYETTE BOARD



FROM TOP TO BOTTOM: K. Haynes, L. Grother, P. Glatfelder, D. Pittman, A. Vining, N. Shaw, S. Culver, M. Durscherl, K. George, S. Harris, M. Franks, M. Robison, D. Dick, J. Billups, V. Ibach, S. Ibach, M. Burch, Mrs. Dow, sponsor.



# SENIOR KAYS



FIRST ROW, LEFT TO RIGHT: D. Presley, S. Boggs, R. Burch, J. Meyer, D. Weber, G. Cowan, D. Salisbury, D. Morency, J. Meyer. SECOND ROW: M. Scimeca, B. Coffman, M. Clark, T. Catlett, D. Hoad, L. Campbell, T. Smith, S. Hollopeter, P. Smith, J. Barnett. THIRD ROW: T. Holeman, G. Coker, P. McKee, T. Simpson, B. Cowan, J. Orcutt, A. Ashford, H. Baker, Mr. Henson, sponsor. FOURTH ROW: R. Johnson, R. Griffin, D. Hoad, M. Cushman, D. Franks, D. McGinnis, C. Gregg, F. Huffman, D. Edens, B. Courtright, R. Barnhart.

Caney Valley Historical Society

# SENIOR KAY BOARD



FROM LEFT TO RIGHT: D. Morency, J. Orcutt, S. Boggs, M. Scimeca, J. Barnett, Mr. Henson, sponsor, J. Meyer, M. Cushman.



# FBLA



LEFT TO RIGHT, SEATED: A. Vining, V. Ibach, L. Marshall, C. Lessman, D. Gillham, K. Notestine. STANDING, FIRST ROW: K. Nelson, S. Vaught, D. Bright, S. Ibach, J. Long, S. Culver, T. Miller, J. Bryan, D. Barrett, J. Hannegan, M. Buster, D. Parker, B. Atterberry, E. Brinkley, A. Pinner, P. Glatfelder. SECOND ROW: Mr. Coffman, sponsor, S. Boggs, F. Huffman, D. Harris, M. Clark, S. Price, D. McGinnis, G. Coker, H. Kennedy, M. Scimeca, J. Orcutt, B. Coffman.

## Caney Valley Historical Society PLAYMAKERS



LEFT TO RIGHT, SEATED: D. McGinnis, D. Dick, F. Huffman. STANDING: M. Buster, S. Price. FIRST ROW: M. Burch, K. Nelson, J. Bryan, M. Durscherl, L. Leonard, P. Courtright, D. Bright, S. Call, C. Lutz, J. Long, Mrs. Franks, sponsor. SECOND ROW: R. Fuqua, J. Barnett, C. Lessman, V. Ibach, S. Payne, S. Ibach, S. Culver, E. Brinkley, S. Parker, K. George, R. Knotts. THIRD ROW: S. Boggs, R. Chambers, D. Antle, D. Gillham, L. Marshall, S. Harris, D. Barrett, J. Hannegan. FOURTH ROW: M. Scimeca, D. Harris, M. Clark, B. Coffman, M. Robison, D. Parker, M. Hait, P. McKee, P. Sullivan, L. Allison. FIFTH ROW: D. Rogers, B. Newby, R. Muck, N. Williams, J. Heapes, K. Haynes, T. Miller, H. Kennedy, E. Hughes, A. Vining, M. Franks. SIXTH ROW: D. Franks, R. Johnson, G. Coker, J. Orcutt, R. Taylor, B. Cowan, S. Potts, D. Troutman, T. Simpson, T. Fulton, M. Cushman, R. Barnhart, H. Baker, M. Crocker.





FIRST ROW, LEFT TO RIGHT: R. Knotts, J. Long, T. Miller, M. Buster, S. Murphy. SECOND ROW: D. Gillham, L. Kannard, B. Hollis, A. Vining, P. Courtright. THIRD ROW: M. Woolsey, G. Finney, L. Leonard, C. Lutz, E. Hughes, S. Pearsall, D. Dick, C. Gilliland, P. Young. FOURTH ROW: D. Robbins, C. Geddes, P. Murphy, L. Mooney, S. Heape, C. Crocker, L. Bowen, K. Land, V. Sharp, S. Ashford. FIFTH ROW: R. Kannard, J. Brinkley, M. Hait, A. Thomison, J. Holeman, L. Houser, C. Coker, B. Atterberry, M. Chrisman. SIXTH ROW: J. Windle, B. Cowan, K. Nelson, S. Fields, N. Cooper, T. Mitchell, M. Ingerson. SEVENTH ROW: M. Billups, Miss Mosslander, sponsor, S. Ducummon, M. Robbins, M. Morrison, L. Moreland, C. Carey.

## PEPPERETTES

Caney Valley Historical Society



## CHEERLEADERS

LEFT TO RIGHT, FIRST ROW: Rosa Knotts, Sheryl Murphy. SECOND ROW: Judy Long, Terry Miller, Marta Buster.





#### OFFICERS

LEFT TO RIGHT, SEATED: Mr. Field, sponsor, L. Dean, A. Harrison, B. Newby, G. Shafer, L. Fields, C. Dean. STANDING: R. Barnhart, D. Troutman.

#### JUDGING TEAM

LEFT TO RIGHT, SEATED: L. Mason, L. Blagg, L. Dean, B. Mason, J. Shrock, G. Finney. FIRST ROW: G. Shafer, B. Newby, C. Dean, A. Harrison, R. Koger, R. Barnhart, D. Troutman, L. Fields, S. Boggs, Mr. Field, sponsor.



LEFT TO RIGHT, SEATED: L. Mason, R. Koger, G. Cowan, G. Finney, B. Mason, J. Shrock, D. Edens. FIRST ROW: C. Harrison, A. Carra, R. Ernest, J. Carter, J. Atkinson, D. Pocock, J. Orcutt, S. Boggs, T. Perkins, M. Finney, L. Dean. SECOND ROW: B. Newby, B. Cowan, G. Hockett, J. Hockett, M. Fichtl, L. Blagg, M. Crocker, C. Walls, G. Shafer, T. Shafer, D. Holeman, Mr. Field, sponsor. THIRD ROW: J. Simpson, T. Simpson, R. Taylor, R. Barnhart, R. Johnson, L. Fields, D. Troutman, A. Harrison, C. Dean, T. Lynn, M. Armitage, T. Fulton, G. Bronnenberg.

Caney Valley Historical Society

VOCATIONAL AGRICULTURE  
1951





# LETTERMEN



LEFT TO RIGHT, FIRST ROW: L. Fields, R. Odom, F. Huffman, D. McGinnis, R. Giblin, C. Gregg, B. Courtright. SECOND ROW: J. Friesburg, M. Scimeca, T. Fulton. THIRD ROW: D. Harris, S. Potts, L. Dean, R. Edens, P. McKee. FOURTH ROW: S. Price, Coach Brad Buckner, Coach George Rau, Coach Horace Taylor.

## Caney Valley Historical Society SERENADERS



LEFT TO RIGHT, FRONT ROW: D. Morency, P. Barth, S. Harris, D. Rogers, M. Durscherl, P. Smith. SECOND ROW: M. Cushman, L. Fields, R. Muck, G. Hale, D. Franks, D. Hoad, R. Taylor, F. Toner, J. O'Shields, T. Shinn, P. Glatfelder, Director, Mr. Beery.



# SENIOR



## Caney Valley Historical Society

LEFT TO RIGHT, FIRST ROW: M. Durscherl, N. Williams, D. Hoad. SECOND ROW: C. Mattix, L. Allison, K. George, M. Burch, D. Dick, M. Ingerson, R. Knotts. THIRD ROW: D. Taylor, D. Presley, C. Whetstine, C. Ryan, B. McDowell, T. Holeman, D. McBride, S. Parker, P. Perkins, R. Fuqua. FOURTH ROW: M. Franks, R. Taylor, F. Toner, J. O'Shields, T. Shinn, L. Fields.



## TWIRLERS

LEFT TO RIGHT:  
Marthana Burch  
Jackie Billups  
Cynthia Pearsall  
DeAnn Dick



# BAND



Caney Valley Historical Society

LEFT TO RIGHT, FIRST ROW: P. Tormey, L. Grother, C. Pearsall, D. Parker, K. Haynes, J. Billups, J. Bryan. SECOND ROW: J. Barnett, J. Long, P. Smith, D. Rogers, S. Harris, P. Barth, D. Morency. THIRD ROW: M. Cushman, J. Winkler, C. Redding, R. Burch, D. Thomas, J. Thomas, D. Franks, D. Hoad, G. Hale, R. Muck. FOURTH ROW: Mr. Beery, Director, T. Simpson, J. Freisburg, P. Glatfelder.

## MAJORETTE

Martha Franks





# GIRLS CHORUS



LEFT TO RIGHT, FIRST ROW: M. Durscherl, C. Lutz, J. Rogers, K. O'Shields, J. Rogers, T. Thomas, L. Houser, S. Ibach, D. Bright, D. Gillham, R. Knotts, J. Billups, L. Mooney, T. Mitchell, Mr. Berry, Director. SECOND ROW: S. Ducummon, L. Wooten, L. Leanord, J. Young, N. Shaw, L. Earhart, D. Antle, J. Wakeland, T. Taylor, S. Call, J. Avery, R. Robertson, P. Tormey, J. Ross, N. Cooper, S. Parker. THIRD ROW: C. Mason, S. White, E. Brinkley, S. Payne, D. Barrett, J. Hannegan, E. Hughes, L. Theiss, P. Barth, P. Glatfelder, P. Sullivan, C. Pearsall, B. Atterberry, R. Muck, P. Nash, J. Brinkley, J. Pratt, S. Culver, C. Whetstone. FOURTH ROW: D. Meyer, V. Ibach, M. Chrisman, S. Harris, L. Marshall, A. Vining, R. Chambers, J. Heapes, L. Troutman, M. Robison, E. White, M. Franks, T. Miller, K. Haynes, P. Harrison, A. Pinner, L. Lowery, C. Baehl, L. Allison, K. Lane, B. Koontz. FIFTH ROW: P. Robertson, B. McDowell, P. Courtright, S. Vaught, J. Long, pianist, J. Orcutt, C. Ryan, D. Dick, K. Nelson.

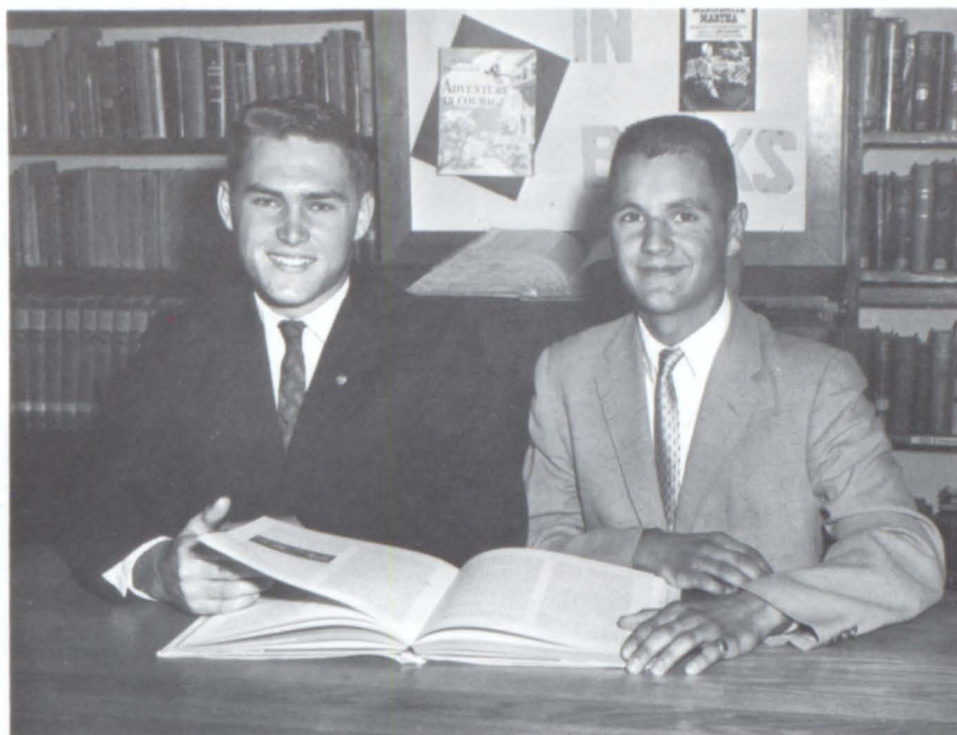
# BOYS CHORUS



LEFT TO RIGHT, FIRST ROW: T. Perkins, D. Hoad, D. Presley, B. Coffman, T. Shinn, J. Chastain, Mr. Berry, Director, J. Barnett, D. Taylor, R. Glatfelder, G. Hale, D. Morency, S. Boggs. SECOND ROW: J. Orcutt, R. Odom, J. Meyer, D. Rogers, M. Scimeca, P. McKee, G. Coker, T. Catlett, J. Simpson, M. Boles, J. Freisberg, J. Browning. THIRD ROW: L. Fields, S. Price, R. Taylor, M. Clark, D. Harris, C. Redding, S. Potts, H. Kennedy, M. Cushman, D. Edens, B. Courtright, M. Hait, F. Huffman. FOURTH ROW: P. Smith, J. Winkler, A. Ashford, D. Franks, C. Gregg, D. McGinnis, R. Giblin, R. Johnson, R. Barnhart, F. Toner, D. Hoad, B. McGinnis, T. Holeman. FIFTH ROW: R. Fuqua, W. Price, L. Carlile, D. Salisbury, D. Weber, D. McBride, B. Price, J. Meyer, R. Burch.



Bob Courtright and Boyd Newby represented Caney at Boys' State.



Donna Parker represented Caney at Neewollah in 1962.

Representing Caney at Girls' State this year was Janet Bryan and Arlene Vining.





# YEARBOOK STAFF



STANDING, LEFT TO RIGHT: Chuck Gregg, Billy Coffman, Jerry Meyer, Max Armitage, Mr. Chambers, sponsor, Stan Price, Franky Huffman, Danny McGinnis. SITTING: Arlene Vining, Marta Buster, Anne Pinner, Janet Bryan, Vicki Ibach, Ruth Muck, Joyce Hannegan.

Caney Valley Historical Society

## OFFICE GIRLS



AROUND, LEFT TO RIGHT: Barbara Koontz, Yetta Liberman, Karen Lane, Loretta Grother, Nancy Shaw, Sheri Heapes, Marta Buster.



# ATHLETICS



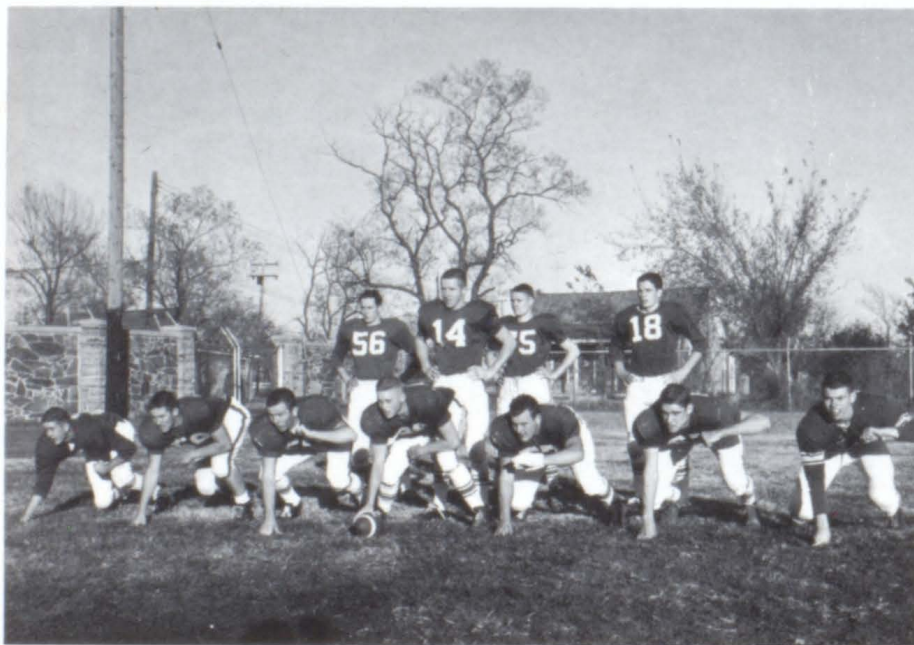
Carney Valley Historical Society



# FOOTBALL TEAM



LEFT TO RIGHT, FIRST ROW: R. Burch, B. Price, W. Price, C. Walls, J. O'Shields. SECOND ROW: D. Harris, P. McKee, S. Price, F. Huffman, D. McGinnis, C. Gregg, M. Hait, L. Fields, T. Fulton, L. Dean, J. Snodgrass. THIRD ROW: R. Fuqua, S. Boggs, B. McGinnis, M. Cushman, M. Boles, T. Shinn, R. Eden, J. Freisberg, S. Potts, Mr. Rau, coach. FOURTH ROW: Mr. Taylor, coach, F. Toner, D. Presley, P. Smith, D. Taylor, J. Tormey, J. Kidwell, R. Giblin, S. Coltharp, J. Shrock, T. Simpson.



## "A" TEAM

LEFT TO RIGHT, FIRST ROW: C. Gregg, T. Fulton, S. Potts, M. Hait, L. Fields, R. Giblin, T. Simpson. SECOND ROW: P. McKee, F. Huffman, J. Freisberg, D. Harris.



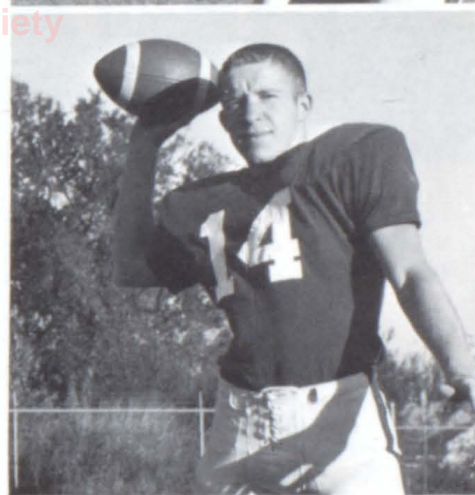


LEFT TO RIGHT, AROUND: Tim Fulton, right tackle, Chuck Gregg, right end, Mike Hait, center, Dick Harris, left half, Frank Huffman, quarterback, Dan McGinnis, right half, Steve Potts, right guard, Stan Price, left guard.



## FOOTBALL SCORES

Caney 7	Eureka 0
Caney 7	St. Patricks 0
Caney 7	Sedan 13
Caney 0	St. Marys 14
Caney 6	Copan 13
Caney 6	Neodesha 52
Caney 0	Fredonia 39
Caney 14	L.C.C. H.S. 42





# BASKETBALL



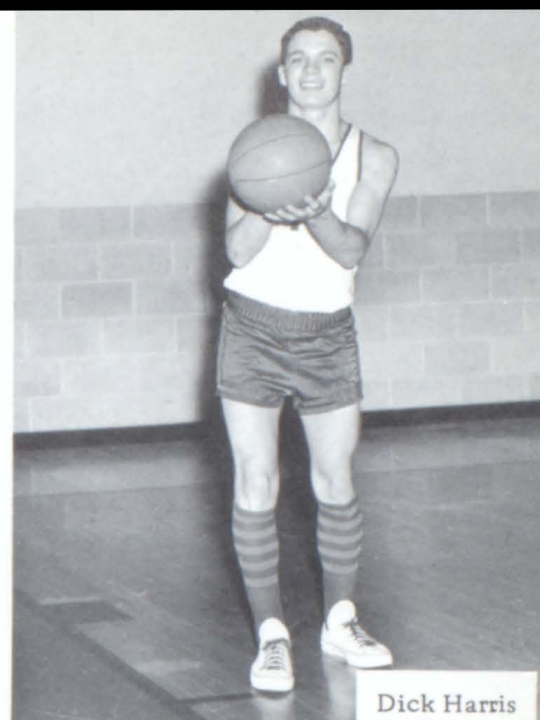
LEFT TO RIGHT, FIRST ROW: Dennis Rogers, Alfred Ashford, Steve Coltharp, Doug Taylor, John Freisberg, Philip Smith, Bill Coffman, Johnnie Chastain. SECOND ROW: Robert Edens, Stanley Price, Franky Huffman, Phillip McKee, Dan McGinnis, Richard Giblin, Steve Potts, Dick Harris, Bob Courtright.



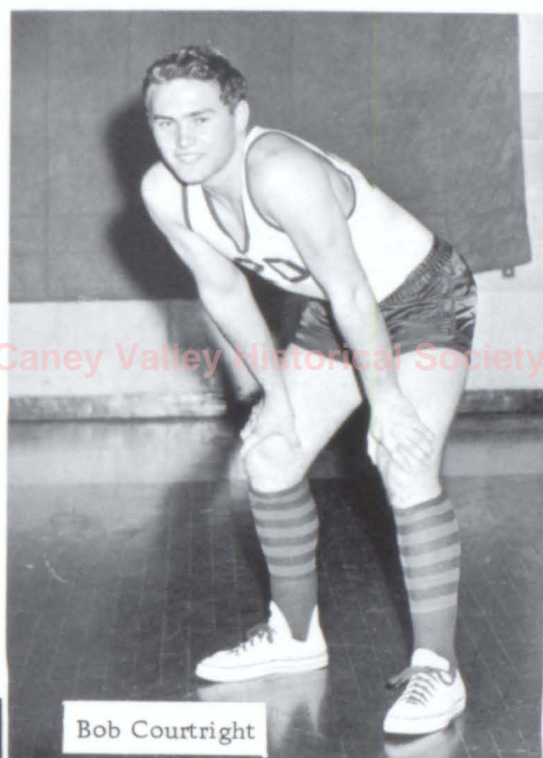




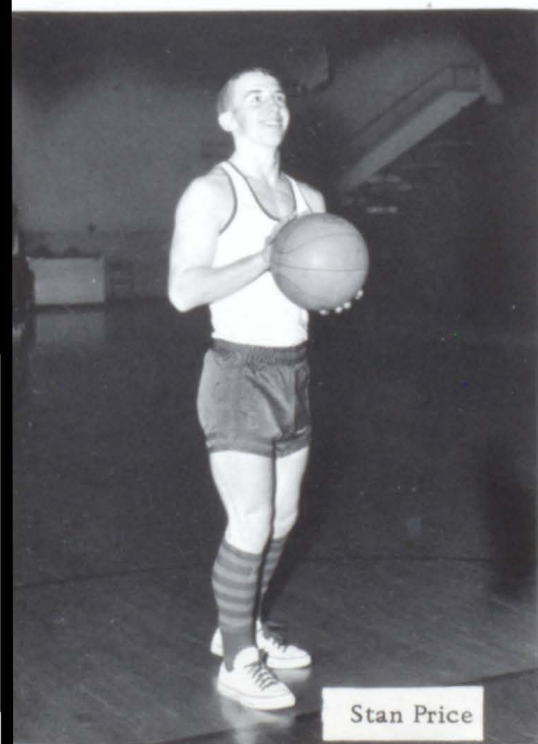
Dan McGinnis



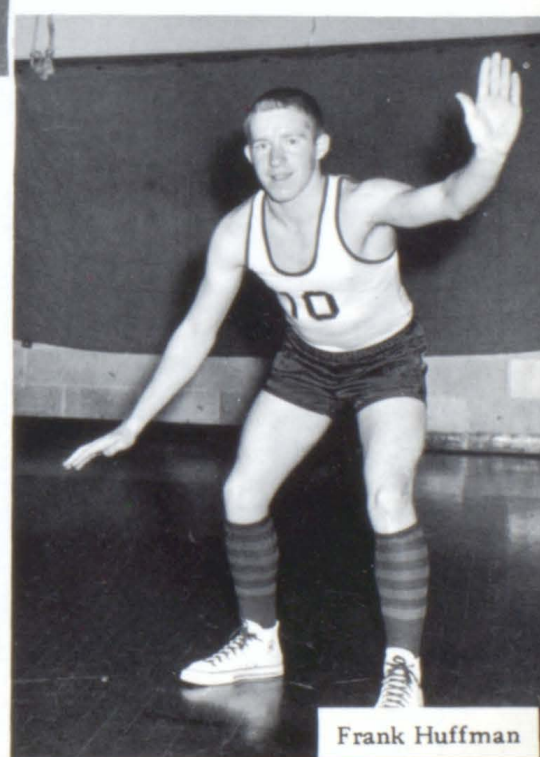
Dick Harris



Bob Courtright



Stan Price



Frank Huffman

Caney Valley Historical Society



A black and white portrait of a young woman, Marthena Burch, identified as the Football Queen. She has dark, wavy hair and is smiling slightly. She is wearing a dark jacket with a white, ruffled collar and a large white flower corsage on her left shoulder. A watermark "Caney Valley Historical Society" is visible across the center of the image.

Caney Valley Historical Society

Marthena Burch  
Football Queen





Caney Valley Historical Society

Janet Bryan  
Basketball Queen



A black and white portrait of a young woman with short, dark, wavy hair. She is looking slightly to the right with a gentle smile. Her right hand is raised, with her fingers resting near her chin. She is wearing a light-colored, possibly white, dress with a ruffled or pleated bodice. A small floral corsage is pinned to her left arm. The background is a plain, light color.

Caney Valley Historical Society

Marta Buster  
FFA Sweetheart



A black and white portrait of a young woman with dark, wavy hair, smiling. She is wearing a strapless, sequined dress and a necklace. The background is a plain, light color.

Caney Valley Historical Society

DeAnn Dick  
Kane Kan Queen





Basketball Queen Attendants, LEFT TO RIGHT, FIRST ROW: Cynthia Pearsall, Sheryl Murphy, Edith Hughes, Sharon Harris, Patty Courtright. SECOND ROW: Martha Franks, Queen Janet Bryan, Kathy George.

Kathy Haynes



Martha Franks



Vicki Ibach



## KANE-KAN QUEEN ATTENDANTS





Football Queen Attendants, LEFT TO RIGHT: Donna Parker, Steve Potts, Queen Marthana Burch, Stan Price, Linda Marshall, Frank Huffman.

## F.F.A. SWEETHEART ATTENDANTS





# BOOSTERS

WAKELAND'S GROCERY  
HARRIS RESTAURANT  
MEYER GREENHOUSE  
LACY DRIVE IN  
STADALMAN LAUNDRY  
PENDLETON CHEVY INC.  
GREGG THEATER  
DR. IVAN L. KOPLIN  
CANEY CLEANERS  
DICK'S GROCERY  
B & C JOBBERS  
O. E. WOODS LUMBER CO.  
HALLIGAN FEED STORE  
ROBERTA'S BEAUTY SHOP  
ROGER'S CITIES SERVICE STATION  
O. B. BRIDENSTINE  
UNION GAS SYSTEM, INC.  
TAYLOR FURNITURE CO.  
GREGORY'S STYLE SHOP  
BERTHA'S BEAUTY SHOP  
OKLAHOMA TIRE AND SUPPLY  
IBACH 66 SERVICE STATION  
NOTESTINE'S GIFTS  
LINGLE'S BEN FRANKLIN  
FLOYD ROGER'S CLEANERS  
AL CHASTAIN REFRIGERATION  
BOB SONNEMANN AGENCY  
BILL BILLUPS SINCLAIR STATION  
BAXTER CITIES SERVICE STATION  
DAIRY QUEEN  
KANSAS GAS AND ELECTRIC

CANEY VALLEY NATIONAL BANK  
IMPORT BEAUTY SHOP  
GILLHAM FURNITURE  
LONG'S GROCERY  
CANEY LUMBER CO.  
LESSMAN PROPANE CO.  
GRAVES' FUNERAL HOME  
BLACKLEDGE SALES CO.  
CANEY BUS TERMINAL  
GARR ELECTRIC  
TONER MOTOR CO., FORD  
CANEY FOOD BANK  
ELLIOTT GROCERY  
CANEY SHOE SHOP  
SURRETT BARBER SHOP  
DALE'S LUNCH  
MONTGOMERY STANDARD STATION  
MILLS & DePRIEST OIL CO.  
HOLLIDAY GROCERY  
SANDOTT LUMBER CO.  
CANEY CHRONICLE  
BAKER'S DRUG STORE  
SAWYER'S CLOTHING STORE  
WINKLER'S PHARMACY  
ESTES FOOD STORE  
LOUIE HILL AGENCY  
PERRILL'S READY-TO-WEAR  
COWAN HARDWARE AND APPLIANCE  
CANEY CAFE  
DICK GRIFFIN-STANDARD LIFE  
ASSOCIATION



**Caney Valley Historical Society**



**Caney Valley Historical Society**

**Caney Valley Historical Society**



**Caney Valley Historical Society**

VALEDICTORIAN  
AND  
SALUTATORIAN

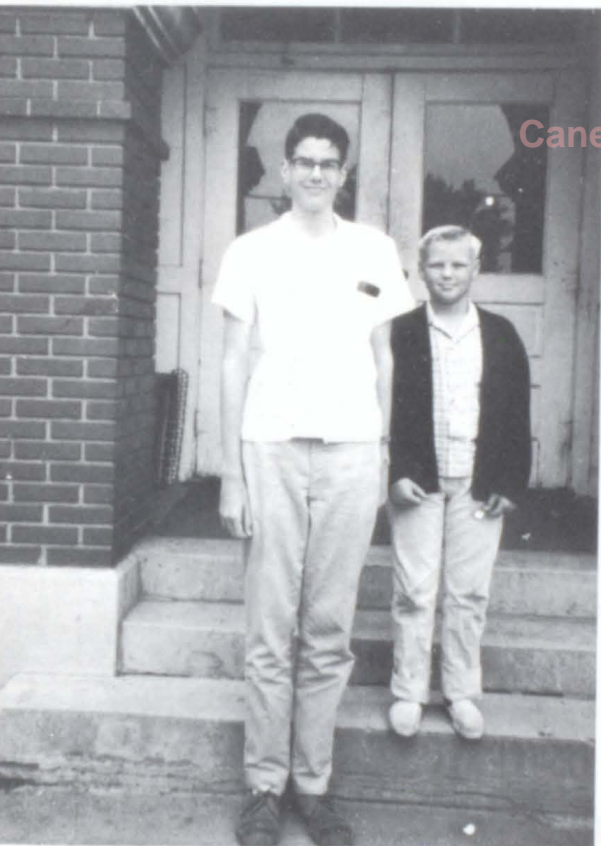


ALL-ROUND  
STUDENT



Caney Valley Historical Society

JUNIOR HIGH  
RECOGNITION STATE  
SCHOLARSHIP  
CONTEST



HIGH SCHOOL  
RECOGNITION  
KANSAS STATE  
SCHOLARSHIP  
CONTEST





## "A" HONOR ROLL FOR 4 YEARS



## "B" HONOR ROLL FOR 4 YEARS





PERFECT  
ATTENDANCE  
FOR  
FOUR YEARS

SAX QUARTET  
ONE AT  
STATE MUSIC  
FESTIVAL



CLARINET SOLO  
ONE AT  
STATE MUSIC  
FESTIVAL





KAYETTE  
3000 POINT  
AWARD

KAYETTE  
DELEGATES  
TO  
CAMP—1963

Caney Valley Historical Society



FIRST PLACE  
IN  
HORTICULTURE  
IN THE STATE  
FFA



KANSAS PEACE  
CORP  
CONFERENCE  
DELEGATES



## GOLF TEAM



## FIRST IN STATE GOLF MEET

Caney Valley Historical Society



## TRACK TEAM



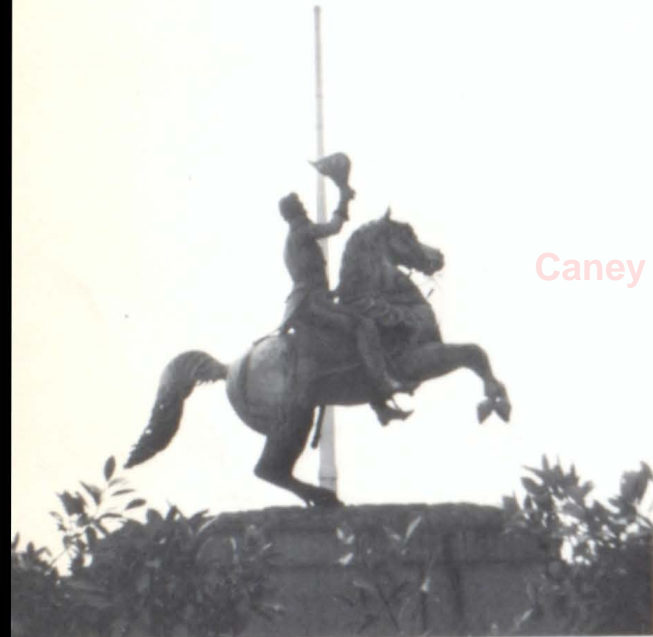
## JUNIOR HIGH TRACK TEAM







SR.



Caney Valley Sneak Society

SNEAK



TRIP



# GRADUATION



Caney Valley Historical Society





JR.-SR.  
PROM



Caney Valley Historical Society





Caney Valley Historical Society







Caney Valley Historical Society