

Pittsburg State University

Pittsburg State University Digital Commons

KNEA 50th Anniversary

2023

PSU/ KNEA Mission, Vision and, Values Statement

KNEA State of Kansas

Follow this and additional works at: <https://digitalcommons.pittstate.edu/knea50>

Recommended Citation

State of Kansas, KNEA, "PSU/ KNEA Mission, Vision and, Values Statement" (2023). *KNEA 50th Anniversary*. 55.

<https://digitalcommons.pittstate.edu/knea50/55>

This Article is brought to you for free and open access by Pittsburg State University Digital Commons. It has been accepted for inclusion in KNEA 50th Anniversary by an authorized administrator of Pittsburg State University Digital Commons. For more information, please contact digitalcommons@pittstate.edu.

Revised Mission, Vision, and Values

V.14ds (2023)

NEW: Our Charter

We are the leading micropolitan university that is measured by the success of our students and the communities we serve; advancing education, research, and discovery of public value; and assuming leadership for improving the economic, social, cultural, and overall health outcomes throughout the region and world.

NEW: Our Mission

To make life better for others through education.

NEW: Our Vision

We make lives better for others by educating and preparing students to make positive contributions to their chosen professions and future communities. We accomplish this by:

- Providing access to valuable education programs and experiences for students
- Serving as a higher education leader for ensuring students achieve their academic goals
- Embracing a historic commitment to learn by doing
- Creating an inclusive educational and work environment where everyone feels valued
- Connecting Kansas to the world and the world to Kansas
- Driving regional economic prosperity and competitiveness through education, research, discovery, and community engagement
- Engaging with diverse communities and organizations to develop innovative solutions to critical social, technical, cultural, and environmental issues

NEW: Design Principles

The following design principles will guide our efforts. They are integrated throughout the university to advance initiatives and drive the accomplishment of goals and objectives on behalf of our students and community partners.

At Pittsburg State University, we/are....

- Simplify
 - actively seek opportunities to reduce barriers for students by improving education-related systems, programs, and processes
- Love Our Place
 - engage with our communities by embracing our cultural, socioeconomic, and physical setting in Southeast Kansas
- Care For People
 - believe all faculty, staff, students, alumni, and community partners belong and deserve to live, learn, and work in fulfilling and healthy environments
- Collaborate
 - listen to others and use knowledge to advance innovative, collaborative approaches to solving problems both on and off campus
- Pursue Excellence
 - are not afraid to take risks in the pursuit of accomplishing goals and objectives that lead to positive outcomes for students, faculty, staff, and community partners

- Proud to be Gorillas
 - we embrace a valuable link between past, current, and future Gorillas that is a distinct point of pride to be celebrated
- Explore with Purpose
 - believe scholarship and research has purpose and impacts communities locally, regionally, nationally, and globally
- Sustain Through Stewardship
 - successfully steward and sustain finite human, financial, and environmental resources

NEW: Goals

Our strategic plan is organized by nine goals and associated initiatives through which we plan to achieve those goals.

Goal 1: Valuable Education Experience

Develop the most valuable learner-centered higher education experience for students.

Goal 2: Student Achievement

Remove barriers and commit to student success as a shared imperative to assist students in achieving their academic goals.

Goal 3: Access, Inclusion and Equity

Create a campus culture that values diversity and works to ensure individuals belong as members of the University community.

Goal 4: Organizational Culture

Strengthen student, faculty, and staff satisfaction with their living, learning, and work environment as a clear institutional priority.

Goal 5: Scholarship, Research, and Creative Activity

Develop a scholarship, research, and creative activity portfolio with strategic intent.

Goal 6: Economic Development

Drive regional economic prosperity and strengthen State-wide competitiveness through education, research, and community engagement programs and initiatives.

Goal 7: Community Engagement

Partner with organizations, alumni, and donors in the City of Pittsburg, throughout the region, and beyond to advance shared educational, cultural, economic, environmental, and social priorities.

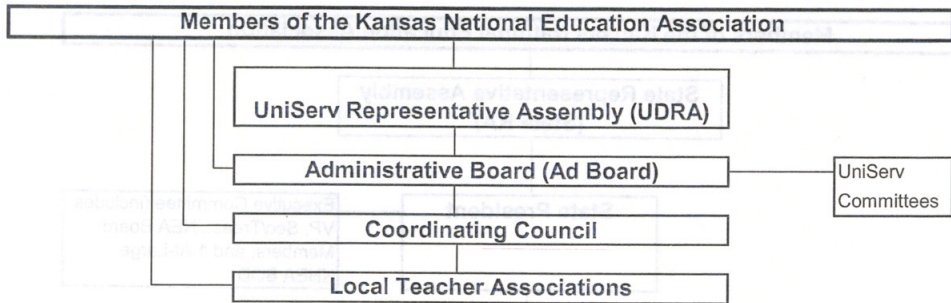
Goal 8: Continuous Improvement

Advance a culture of continuous improvement that values transparency, strategic planning and evaluation, effective communication, shared governance, and creative problem solving.

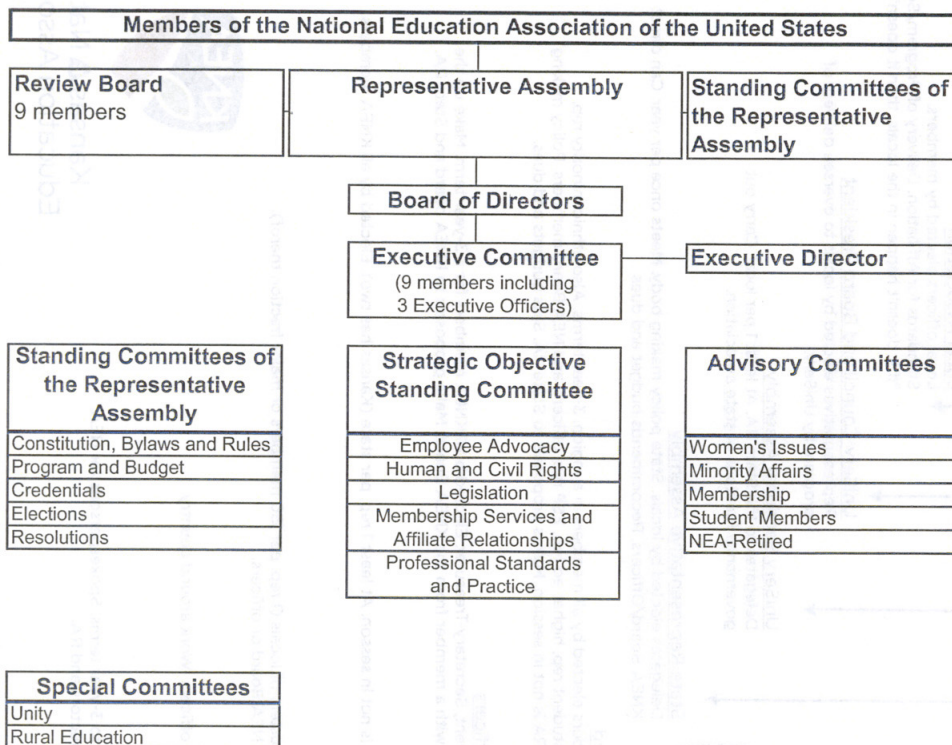
Goal 9: Sustainability and Stewardship

Grow a sustainable future for the University and world through the successful stewardship of finite resources.

UniServ Structure



National Education Association Structure



MEMBERS

KNEA/NEA and LOCAL LEADERSHIP STRUCTURE

MEMBERS

Local Association

Local officers elected by members.
Standards for Affiliation. Delivery of Program/Services.
"If it doesn't happen in the locals, then it doesn't happen."

UniServ Council and Board President

Representatives elected by locals to oversee delivery of program by UniServ.

UniServ Sectional Assembly

Delegates to the State RA. At least 1 per local. Carry out governance functions of state association.

State Representative Assembly

Delegates elected by locals. State policy making body. Meets once per year. Can direct KNEA Board/Officers. Recommends budget and dues

KNEA Board

Board members elected by all members in a region. 3-year terms. Also ethnic minority rep, retired rep, student rep, higher ed rep, ESP rep, officers, and NEA Board members. Policy making body when RA is not in session. Makes proposals to State RA. Sets budgets and dues.

KNEA Executive Officers

President, Vice President, Secretary-Treasurer. Elected by all KNEA members for a 3-year term. Make up the executive committee with a member from the KNEA Board. Make proposals to KNEA board and State RA.

NEA Board of Directors

Policy-making body when RA is not in session. At least 1 rep. per state (Kansas has two). Elected by all KNEA members. 3-year terms.

NEA Representative Assembly

Delegates elected by members in locals or clusters of locals (1 rep. per 150 members or major fraction thereof). Policy making body. Meets 1/year. Can direct NEA Board or officers.

NEA Executive Committee

Elected by NEA RA to 3-year terms, 6 positions plus 3 officers. Work around country. Make decisions in absence of Board.

NEA Officers

President, Vice President, Secretary/Treasurer. Elected by NEA RA to 3-year terms. Spokespersons for NEA. Make recommendations to NEA Executive Committee, Board of Directors and RA.



Kansas National
Education Association