

Pittsburg State University

Pittsburg State University Digital Commons

Carson J. Robison Music Scores

Carson J. Robison, the Cowboy Radio Singer,
1903-1988

2015-01-01

I Just Keep Ploddin' Along

Carson Robison

Follow this and additional works at: <https://digitalcommons.pittstate.edu/cjrms>

Recommended Citation

Robison, Carson, "I Just Keep Ploddin' Along" (2015). *Carson J. Robison Music Scores*. 49.
<https://digitalcommons.pittstate.edu/cjrms/49>

This Sheet Music is brought to you for free and open access by the Carson J. Robison, the Cowboy Radio Singer, 1903-1988 at Pittsburg State University Digital Commons. It has been accepted for inclusion in Carson J. Robison Music Scores by an authorized administrator of Pittsburg State University Digital Commons. For more information, please contact digitalcommons@pittstate.edu.

I JUST KEEP PLODDIN' ALONG

THERE'S NO REASON THAT I CAN SEE FOR TROUBLE TO HAUNT ME SO
SEEMS LIKE TROUBLE IS BOUND TO BE WHEREVER I WANT TO GO
I KNOW PEOPLE WHO LIVE EACH DAY WITH NOTHIN' MUCH ON THEIR MIND
THEY'RE THE PEOPLE WHO LOVE TO SAY THE CLOUDS ARE ALL SILVER LINED
BUT HERE'S A REASON OR TWO - WHY I FEEL LIKE I DO

CHORUS

THINGS AINT BEEN SO HAPPY THIS YEAR
MIGHTY HARD WINTER A COMIN' I HEAR
SEEMS LIKE EVERYTHING'S OUT OF GEAR
AND THE WHOLE DARN WORLD'S GONE WRONG - OH!
I AINT GOT NO MONEY LAID BY
COAL ALL BURNED AND THE RIVER GONE DRY
BUT I GOT TO LIVE UNTIL I DIE
SO I JUST KEEP PLODDIN' ALONG
DOG WONT HUNT - LOOKIN' FRAIL -
TOO FAR GONE TO EVEN WAG HIS TAIL
THE OLD MULE DIED A WEEK AGO
AND IF THAT AINT HARD LUCK - THEN I DONT KNOW
HOLE IN THE ROOF AS BIG AS OUTDOORS
IT NEVER RAINS BUT WHAT IT POURS
TROUBLES COME IN THREE'S AND FOUR'S
BUT I JUST KEEP PLODDIN' ALONG

Verse

THIS DEPRESSION THEY TALK ABOUT - DONT BOTHER ME NONE I'VE FOUND
I'VE GOT PLENTY TO FIGURE OUT - IF PRICES GO UP OR DOWN
LANDLORD'S COMIN' TO GIT THE RENT - HE'S GOIN' TO MAD I KNOW
MY EXCUSES ARE OLD AND BENT - I WORE 'EM OUT LONG AGO
SO NOW I LEAVE IT TO YOU - DO YOU WONDER I'M BLUE

CHORUS

HARD LUCK KEEPS ON CHASIN' ME DOWN - HAUNTS MY TRAIL JIST LIKE AN OL' HOUND
SHOES ALL RAGGED FROM TRAMPIN' ROUND BUT I JIST KEEP PLODDIN' ALONG
I'VE BEEN TEMPTED MANY A TIME TO LAY MY HEAD ON A RAILROAD LINE
LET THE TRAIN COME AND EASE MY MIND * BUT I JIST KEEP PLODDIN' ALONG
COWS GONE DRY - HENS WONT LAY
AINT MUCH LEFT FOR ME TO SAY
OLD GRAY WOLF IS AT MY DOOR
AND HE KEEPS GROWLIN' MORE AND MORE
AINT NO USE TO GRIEVE AND GET GRAY
THAT WONT SCARE MY TROUBLES AWAY
BUT EVERY WORM MUST TURN SOME DAY
SO I JIST KEEP PLODDIN' ALONG

Vamp -

#4 #6

I JUST KEEP PLODDIN' ALONG

THINGS AINT BEEN SO HAPPY THIS YEAR
MIGHTY HARD WINTER A COMIN' I HEAR
SEEMS LIKE EVERYTHING'S OUT OF GEAR
AND THE WHOLE DARN WORLD'S GONE WRONG (OH)
I AINT GOT NO MONEY LAID BY
COAL ALL BURNED AND THE RIVER GONE DRY
BUT I GOT TO LIVE UNTIL I DIE
SO I JUST KEEP PLODDIN' ALONG
DOG WONT HUNT
LOOKIN' FRAIL
TOO FAR GONE TO WAG HIS TAIL
THE OLD MULE DIED
A WEEK AGO
IF THAT AINT HARD LUCK THEN I DONT KNOW
HOLE IN THE ROOF AS BIG AS OUTDOORS
NEVER RAINS BUT WHAT IT POURS
TROUBLES COME IN THREE'S AND FOUR'S
BUT I JUST KEEP PLODDIN' ALONG

(Guitar one fourth)
(Whistle one fourth)

COWS GONE DRY
HENS WONT LAY
NOT MUCH LEFT FOR ME TO SAY
THE OLD GRAY WOLF IS AT MY DOOR
AND HE KEEPS GROWLIN' MORE AND MORE
AINT NO USE TO GRIEVE AND GET GRAY
THAT WONT SCARE MY TROUBLES AWAY
EVERY WORM MUST TURN SOME DAY
SO I JUST KEEP PLODDIN' ALONG.

I JUST KEEP PLODDIN' ALONG

①

CHORUS

MIGHTY HARD WINTER A COMIN' I HEAR
HAUNTIN' MY TRAIL JUST LIKE AN OL' HOUN'

MIGHTY HARD WINTER A COMIN' I HEAR
HAUNTIN' MY TRAIL JUST LIKE AN OL' HOUN'

WHOLE DARN WORLDS GONE WRONG OH
JUST KEEP PLODDIN' A--LONG OH

COAL ALL BURNED AND THE RIVER GONE DRY
LAY MY HEAD ON A RAILROAD LINE

WHOLE DARN WORLDS GONE WRONG OH
JUST KEEP PLOD-DIN' A--LONG OH

COAL ALL BURNED AND THE RIVER GONE DRY
LAY MY HEAD ON A RAILROAD LINE

JUST KEEP PLODDIN' A LONG
JUST KEEP PLODDIN' A--LONG

JUST KEEP PLODDIN' A LONG
JUST KEEP PLODDIN' A--LONG

NEVER RAINS BUT WHAT IT POURS
THAT WONT SCARE MY TROUBLES A WAY

JUST KEEP PLODDIN' A LONG
JUST KEEP PLODDIN' A LONG

NEVER RAINS BUT WHAT IT POURS
THAT WONT SCARE MY TROUBLES A WAY

JUST KEEP PLODDIN' A LONG
JUST KEEP PLODDIN' A LONG

AIN'T NO REAS--ON THAT I CAN SEE FOR TROU-BLE TO HAUNT ME SO
THIS DE--PRES-SION THEY TALK A-BOUT DONT BOTH-ER ME NONE I'VE FOUND

SEEMS LIKE TROUBLE IS BOUND TO BE WHERE EV---ER I WANT TO GO
I'VE GOT PLEN-TY TO FIG--URE OUT IF PRIC-ES GO UP OR DOWN

I KNOW PEO-PLE WHO LIVE EACH DAY WITH NOTH--IN' MUCH ON THEIR MIND
LAND-LORDS COM-IN' TO GET THE RENT HE'S GOIN' TO BE MAD I KNOW

THEY'RE THE PEO PLE WHO LOVE TO SAY "THE CLOUDS ARE ALL SIL--VER LINED"
MY EX--CUS--ES ARE OLD AND BENT I WORE 'EM OUT LONG A----GO

BUT HERES A REAS--ON OR TWO--- WHY I FEEL LIKE I DO----
NOW I LEAVE IT TO YOU--- DO YOU WON---DER I'M BLUE--

THINGS AINT BEEN SO HAP--PY THIS YEAR MIGHT-Y HARD WIN-TER A COM--IN' I HEAR
HARD LUCK KEEPS ON CHAS-IN' ME DOWN HAUNT-IN' MY TRAIL JUST LIKE AN OL' HOUN'

SEEMS LIKE EV--RY-THING'S OUT OF GEAR AND THE WHOLE DARN WORLD'S GONE WRONG NOW
SHOES ALL RAG-GE~~D~~ FROM TRAMP-IN'ROUN BUT I JUST KEEP PLOD--DIN' A LONG NOW

I AIN GOT NO MON--EY LAID BY COAL ALL BURNT AND THE RIV--ER GONE DRY BUT
I'VE BEEN TEMPTED MA---NY A TIME LAY MY HEAD ON A RAIL----ROAD LINE

I GOT TO LIVE UN-TIL I DIE SO I JUST KEEP PLODDIN' A--LONG DOG WONT HUNT
LET THE TRAIN JUST EAZE MY MIND BUT I JUST KEEP PLODDIN A--LONG COWS GONE DRY

LOOK-IN'FRAIL TOO FAR GONE TO WAG HIS TAIL OLD MULE DIED A WEEK A--GO IF
HENS WONT LAY AINT MUCH LEFT FOR ME TO SAY OLD GRAY WOLF IS AT MY DOOR

THAT AINT HARD LUCK I DONT KNOW HOLE IN THE ROOF AS BIG AS OUT-DOORS
HE KEEPS GROWLIN' MORE & MORE AINT NO--- USE TO GRIEVE AND GET GRAY

Bill
Alm



MIGHTY HARD WINTER A COMIN' I HEAR



MIGHTY HARD WINTER A COMIN' I HEAR



Sealy



WHOLE DARN WORLD'S GONE WRONG OH

COAL ALL BURNED AND THE RIVER GONE DR

Bill
Alm



WHOLE DARN WORLD'S GONE WRONG OH

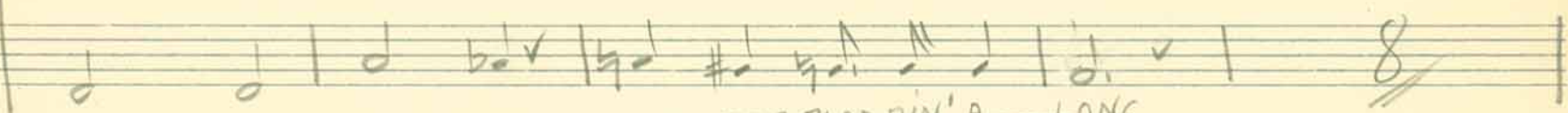
COAL ALL BURNED AND THE RIVER GONE DR



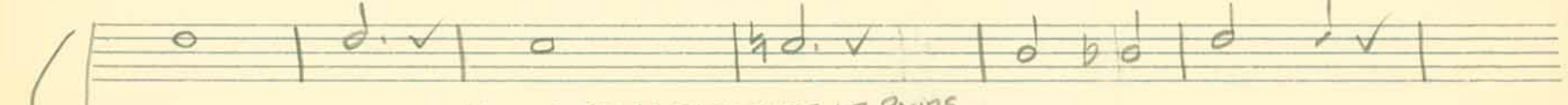
OH



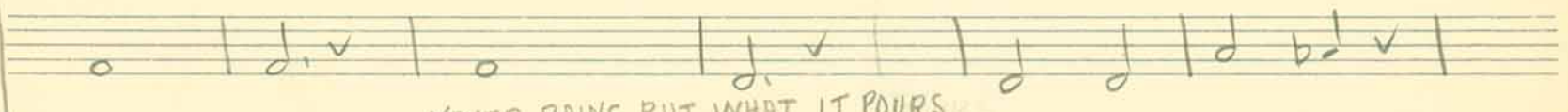
JUST KEEP PLOD-DIN' A LONG



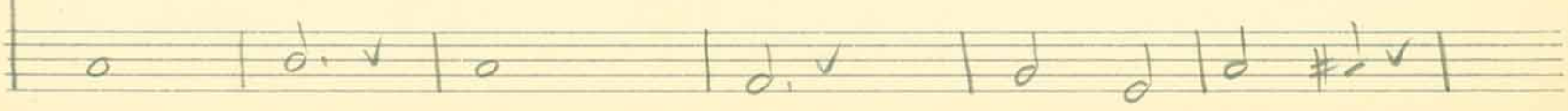
JUST KEEP PLOD-DIN' A LONG



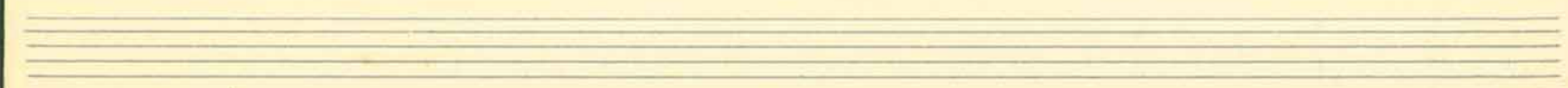
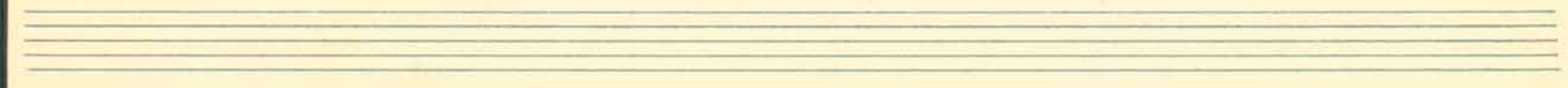
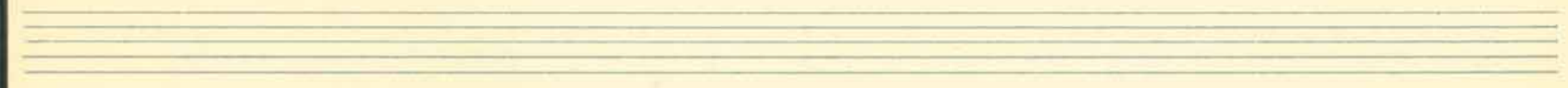
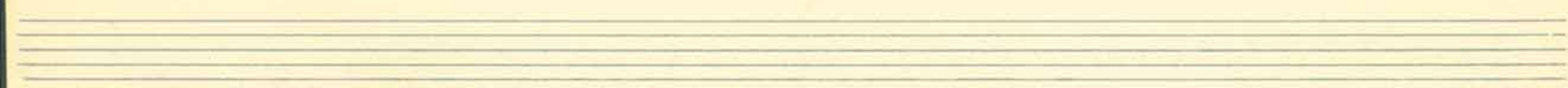
NEVER RAINS BUT WHAT IT POURS



NEVER RAINS BUT WHAT IT POURS



new



I JUST KEEP PLODDIN' ALONG

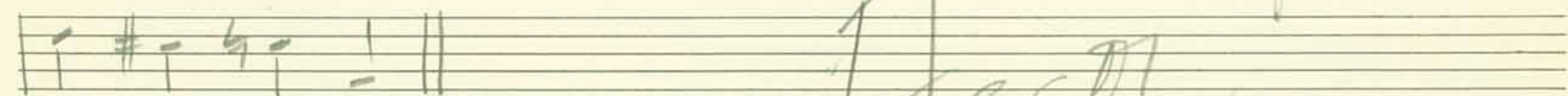
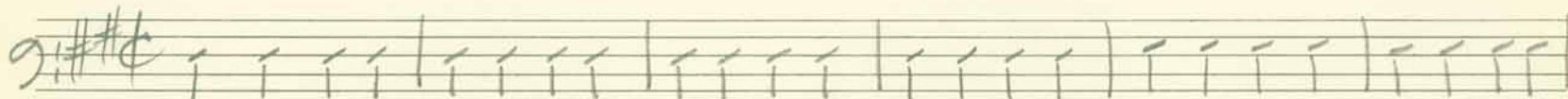
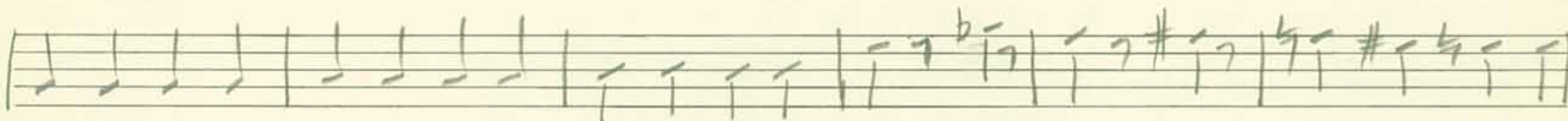
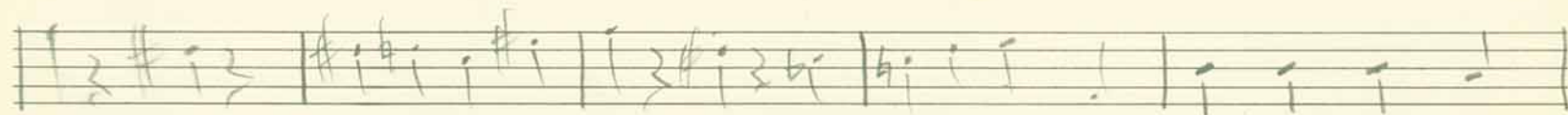
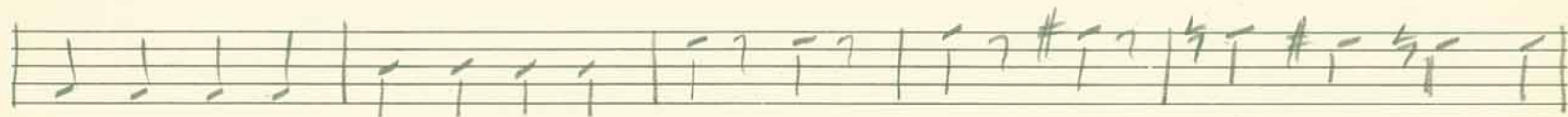
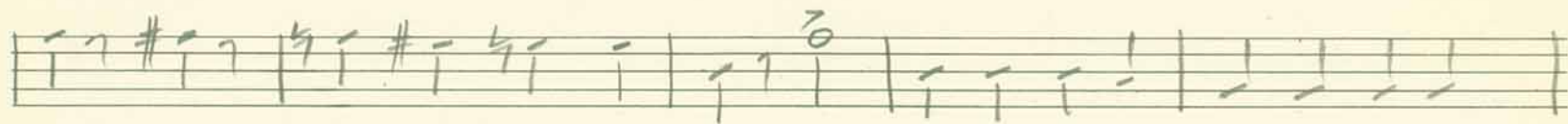
Words & Music By
Carson J. Robison

Handwritten musical notation for the first system, featuring a treble clef and a key signature of one sharp (F#). The notation includes various chords and melodic lines. Above the staff, the following chords are written: Ab, b, c, 9, Ab, b, c, 9, bb, b, c, Eb, 9, Eb, 7, b, f#, 9. Below the staff, the following chords are written: b, f#, 9, b, f#, 9, Ab7, Eb. A bracket indicates a repeat section. Below the repeat section, the following chords are written: B7, c, D7, 9, Bb7.

Handwritten musical notation for the second system, featuring a treble clef and a key signature of one sharp (F#). The notation includes various chords and melodic lines. Above the staff, the following chords are written: D, b, f#, D7, G, 9, D, Bb7. Below the staff, the following chords are written: A7, Ab7, G7, D, A7. A bracket indicates a repeat section. Below the repeat section, the following chords are written: D, Ab7, B7, D7, 9, Bb, G7, C7, F7, Bb, Gdim. Below the staff, the following chords are written: Bb7, D, b, f#, D7, G, 9, D, Bb7. Below the staff, the following chords are written: A7, Ab7, G7, D.

Bass

I JUST KEEP PLODDIN' ALONG



Handwritten signature or flourish.