

Pittsburg State University

## Pittsburg State University Digital Commons

---

Carson J. Robison Music Scores

Carson J. Robison, the Cowboy Radio Singer,  
1903-1988

---

2015-01-01

### I Got a Gal In Kansas

Carson Robison

Follow this and additional works at: <https://digitalcommons.pittstate.edu/cjrms>

---

#### Recommended Citation

Robison, Carson, "I Got a Gal In Kansas" (2015). *Carson J. Robison Music Scores*. 48.  
<https://digitalcommons.pittstate.edu/cjrms/48>

This Sheet Music is brought to you for free and open access by the Carson J. Robison, the Cowboy Radio Singer, 1903-1988 at Pittsburg State University Digital Commons. It has been accepted for inclusion in Carson J. Robison Music Scores by an authorized administrator of Pittsburg State University Digital Commons. For more information, please contact [digitalcommons@pittstate.edu](mailto:digitalcommons@pittstate.edu).

TALK TO GO BETWEEN VERSES OF

"I GOT A GAL IN KANSAS"

That gal is so thin, she uses her elbow for a can-opener.  
I went to kiss her one time in the dark and durn near got cut  
all to pieces.  
She used to have a right purty figure, till one day she went to  
sleep out in the cow pasture and a calf discovered that her  
bustle was stuffed with hay.

- - - - -

I went back to see her one time but the train didnt stop to  
let me off - the engineer said he couldn't tell where the town  
was because the woodpeckers had knocked the depot down.  
She saw a man on the street corner with a sign around his neck  
that read "I am deaf and dumb"- she went up to him and said  
"you poor feller, how long you been deaf and dumb"? and he  
answered "Seven years ma'm"

- - - - -

~~VON & GENE: Now yuh sing some more Cawd Dim ut.~~

Words & Music By  
Carson J. Robison

Chorus-

Chorus-

I GOT

~~XX~~  
back to see her one time but the train didnt stop to let me off - the  
eer said he couldnt tell where the town was cause the woodpeckers had knocked  
spot down. - She seen a man standin' on the street corner with a sign hangin'  
his neck that said "I'm deaf and dumb" and she went up to him and said  
poor feller - how long you been deaf and dumb"? and the feller said "seven year

PROPERTY OF  
CARSON J. ROBISON  
HOTEL KNICKERBOCKER  
120 WEST 45TH ST. NEW YORK

Copyright 1930 By Carson J Robison,  
120 West 45th. New York.



I GOT A GAL IN KANSAS  
PURTY AS A CROSS EYED PUP  
CORN ON HER TOES A WART ON HER NOSE  
AND HER LEFT EYE LOOKS STRAIGHT UP  
SHE'S SO LONG AND SKINNY  
ITS A FACT I'M TELLIN' YOU  
SHE DRINKS MUDDY WATER SO THE PEOPLE CANT LOOK THRU'

CHORUS

I GOT A GAL IN KANSAS  
SHE FOUND A HORNET'S NEST  
AND SHE'S BEEN STANDIN' UP EVER SINCE  
THEY STUNG HER IN THE WEST

INTERLUDE "TURKEY IN THE STRAW" first strain

SHE'S GOT A LOT OF FRECKLES  
SCATTERED ALL OVER HER FACE  
I ASKED HER WHERE SHE GOT ME  
SAYS SHE'S GOT 'EM EVERY PLACE  
HER HAIR WAS LONG AND SHINY  
THE APPLE OF HER EYE  
BUT SHE LOST IT ALL LAST SUMMER  
WHEN SHE HUNG IT OUT TO DRY.

CHORUS

OH I GOT A GAL IN KANSAS  
I'D LIKE TO TRADE HER OFF  
SHE OUGHTA BE DRIVIN' A TAXI  
CAUSE SHE'S GOT A HACKIN' COUGH

*I Got a Gal In Kansas*

*Carson Robison*  
*162*

*clio*

I GOT A GAL IN KAN--SAS PUR---TY AS A CROSS EYED  
SHE'S GOT A LOT OF FRECK-LES SACTTERED ALL OV---ER HER I

PUP FACE I WARTS ON HER NOSE CORNS ON HER TOES AND HER  
ASKED HER-- WHERE SHE GOT EM-- AND - -

LEFT EYE LOOKS STRAIGHT UP SHE'S SO LONG AND SKIN---NY ITS A  
SHE SAID "EV--'RY PLACE" HER HAIR WAS LONG AND SHIN---Y THE

FACT I'M TEL---LIN' YOU SHE SHE DRINKS MUD--DY WAT-----ER SO THE  
AP--PLE OF HER EYE SHE LOST IT ALL LAST SUM---MER WHEN SHE

PEO---PLE CANT LOOK THROUGH  
HUNG IT OUT TO DRY

OH I GOT A GAL IN KAN--SAS SHE FOUND A HOR--NET'S  
OH I GOT A GAL IN KAN--SAS BACK IN THE OLD HOME

NEST AND SHE'S BEEN STANDIN' UP EV---ER SINCE THEY STUNG HER IN THE WEST  
TOWN SHE SAYS HER LEGS ARE NOT TOO LONG CAUSE THEY JUST REACH THE GROUND

3. SHE'S SO DOG GONE LONG AND TALL NO MATTER WHERE SHE'D ROAM  
IF SHE WOULD SLIP AND FALL DOWN FLAT SHE'D BE HALF WAY HOME  
WHEN SHE LEFT HOMESHE WROTE A NOTE AND MAILED IT TO HER MOTHER  
SHE WROTE IF YOU DONT GET THIS ONE LET ME KNOW AND I'LL WRITE ANOTHER  
Chorus

I GOT A GAL IN KANSAS I'D LIKE TO TRADE HER OFF  
SHE OUGHT TO BE DRIVIN' A TAXI CAUSE SHE'S GOT A HACKIN' COUGH

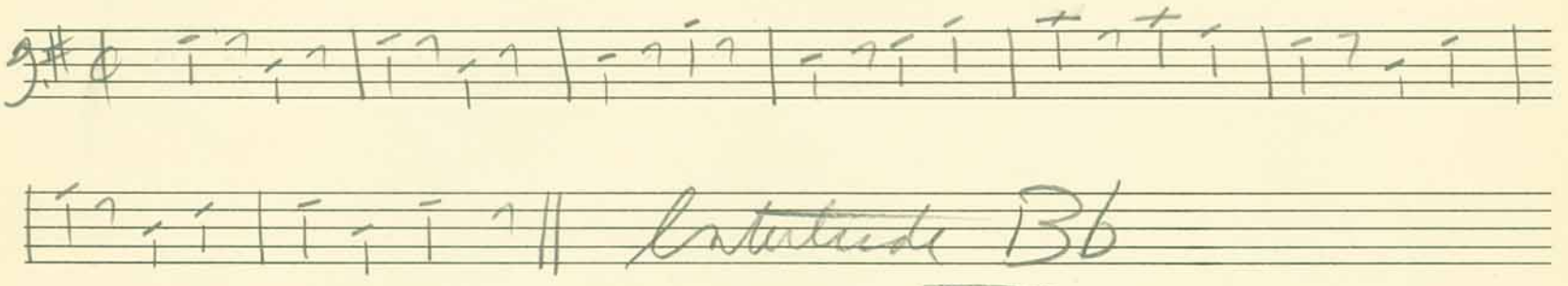
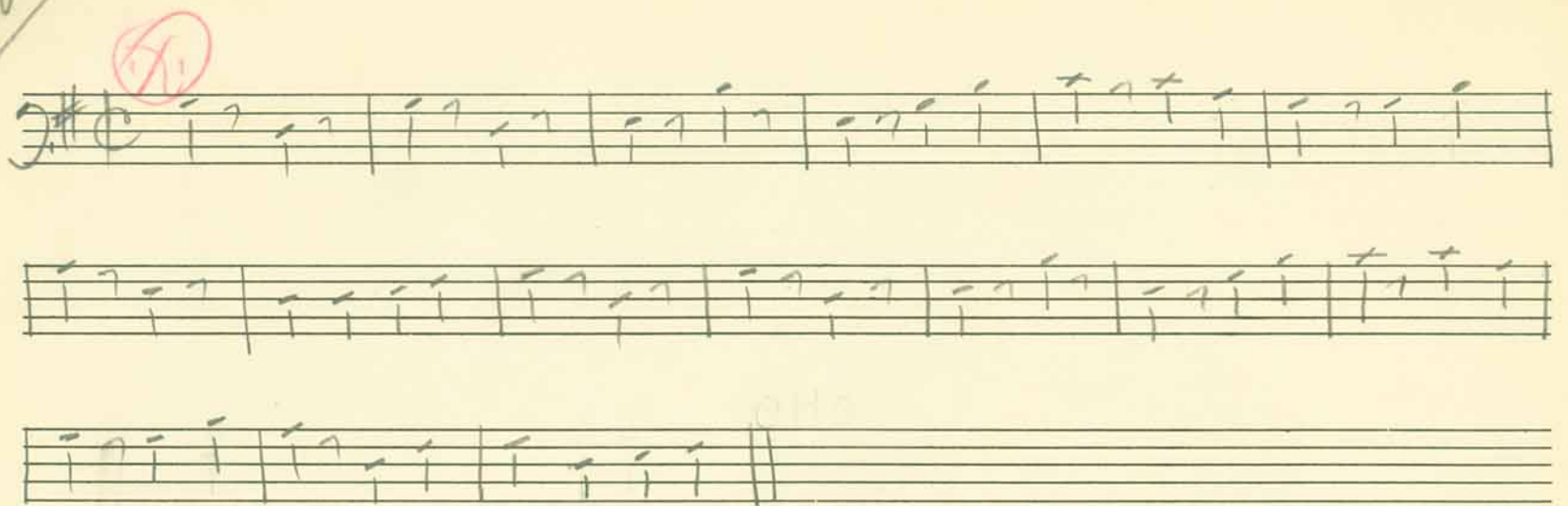
I THOUGHT SHE'D GOT THE SWELL HEAD JUST LIKE A POISONED PUP  
BUT SHE SET DOWN ON A CACTUS PLANT THAT'S WHY SHE'S ALL STUCK UP  
SHE'S GOT A FUNNY FATHER HE'S SHORT AND FAT AND WIDE  
HE'S GOT A BASEBALL MUSTASCHE CAUSE THERE'S NINE HAIRS ON EACH SIDE  
Chorus

I GOT A GAL IN KANSAS AND WHEN SHE'S ALL DRESSED UP  
HER EARS STICK OUT SO GASH DARN FAR THEY CALL HER "LOVIN' CUP"

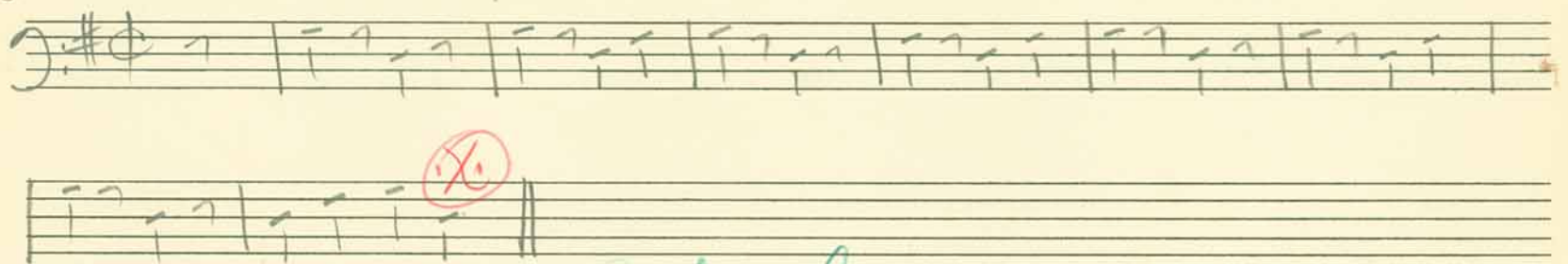


*Pass*

# I GOT A GAL IN KANSAS



Interlude "Turkey In the straw"



*John to Mike - plenty of time.*

novak  
clarinet

# I GOT A GAL IN KANSAS

Handwritten musical notation for Clarinet (Novak) for the song "I Got a Gal in Kansas". The notation is written on a single staff with a treble clef and a key signature of one sharp (F#). The music is in 2/4 time. The notation includes various musical symbols such as notes, rests, and bar lines. There are two red circles with an 'X' inside, one at the beginning of the first staff and one at the end of the sixth staff. The word "Interlude" is written in the middle of the sixth staff.

Four empty musical staves for additional notation.

Bill

# I GOT A GAL IN KANSAS

Handwritten musical notation for "I Got a Gal in Kansas". The notation is written on five staves, each with a treble clef and a key signature of one sharp (F#). The time signature is 4/4. The notes are mostly whole notes, and the chords are indicated by letters above the staves.

Staff 1: G, G, Em, —, C, G

Staff 2: A7, D7, G, —, Em, —

Staff 3: C, G, D7, G, ||

Staff 4: cho G, —, Em, —, C, G, D7

Staff 5: G, ||

## Interlude "Turkey in the Straw"

Handwritten musical notation for the Interlude "Turkey in the Straw". The notation is written on two staves, each with a treble clef and a key signature of one sharp (F#). The time signature is 4/4. The notes are mostly whole notes, and the chords are indicated by letters above the staves.

Staff 1: Bb, G, —, —, D, —, C, G

Staff 2: G, G, D, G, ||

into — J,