

Pittsburg State University

Pittsburg State University Digital Commons

Football Programs, 1916-2013

University Archives

9-21-2013

Southwest Baptist vs Pittsburg State University

Pittsburg State University

Follow this and additional works at: <https://digitalcommons.pittstate.edu/footb>

Recommended Citation

Pittsburg State University, "Southwest Baptist vs Pittsburg State University" (2013). *Football Programs, 1916-2013*. 38.

<https://digitalcommons.pittstate.edu/footb/38>

This Book is brought to you for free and open access by the University Archives at Pittsburg State University Digital Commons. It has been accepted for inclusion in Football Programs, 1916-2013 by an authorized administrator of Pittsburg State University Digital Commons. For more information, please contact digitalcommons@pittstate.edu.

Archives
KD
E 26,5718
2013/2

PITTSBURGH STATE UNIVERSITY OFFICIAL FOOTBALL PROGRAM

PSU

Gameday

Family Day

**Tyler
Disney**



Sponsored by



Pittsburg State vs Southwest Baptist • September 21, 2013 • 7 p.m. • Brandenburg Field/Carnie Smith Stadium



pepsi

PEPSI COLA BOTTLING CO. OF PITTSBURG



1211 N. BROADWAY · PO BOX 1924 · PITTSBURG, KS 66762 · 620 231 3800

2013 PITT STATE FOOTBALL

TABLE OF CONTENTS

2013 Pitt State Schedule.....	1
Head Coach Tim Beck/PSU Coaching Staff.....	3
A.D. Jim Johnson/Athletics Administration.....	5
President Steve Scott.....	7
Pittsburg State University Profile.....	11
Carnie Smith Stadium.....	12
Conference Championships.....	13
Gorilla Fund.....	15
Endowment for Excellence in Athletics.....	16
Football Letterman's Donors.....	17
Endowed Scholarships.....	18
The Gorilla Players.....	21, 23-24, 41-42, 44, 46
Game Day Information	
Game Notes.....	29-39
NCAA Division II National Poll.....	30
Pitt State Roster.....	33
PSU/Opponent Two-Deeps.....	34
Opponent Roster.....	36
Kansas City Gorilla Club.....	51
PSU All-Time Records.....	53-58
Athletic Department Staff.....	59
Athletic Support Groups.....	61
Stadium Emergency Information.....	67

2013 SCHEDULE

Sept. 7	NORTHEASTERN STATE*	THE PITT	7 p.m.
Sept. 14	at Central Oklahoma*	Edmond, Okla.	6 p.m.
Sept. 21	SOUTHWEST BAPTIST*	THE PITT	7 p.m.
	FAMILY DAY		
Sept. 28	at Lincoln*	Jefferson City, Mo.	2 p.m.
Oct. 5	ABILENE CHRISTIAN	THE PITT	2 p.m.
	HOMECOMING		
Oct. 12	at Central Missouri*	Warrensburg, Mo.	1:30 p.m.
Oct. 19	vs. NW Missouri State*	Kansas City, Mo.	3 p.m.
	The Fall Classic at Arrowhead XII		
Oct. 26	at Missouri Western*	St. Joseph, Mo.	1:30 p.m.
Nov. 2	NORTHWESTERN OKLAHOMA	THE PITT	2 p.m.
	HALL OF FAME GAME		
Nov. 9	at Lindenwood*	St. Charles, Mo.	2:37 p.m.
	MIAA TV Game		
Nov. 16	MISSOURI SOUTHERN*	THE PITT	2 p.m.
	Sonic Miner's Bowl		

* - MIAA game HOME games in ALL CAPS



CDL
Electric • Heating • Cooling
Call The Professionals

620-231-6420

201 N. Joplin

Pittsburg, KS 66762

proud sponsor of the:

Tim Beck Radio Show • Monday Nights • KKOW 860 AM

THE BEST OF LOCAL SPORTS

KSN^{HD}
LOCAL NEWS



Eric Knecht & Chris Hagan

ACTION
12^{HD}
NEWS

abc



Cealey Godwin & Andy Searcy

2013 PITT STATE FOOTBALL

HEAD COACH TIM BECK



Tim Beck enters his fourth season as Pittsburg State University's head football coach and his 27th year on the Gorillas' staff. He has compiled a 26-10 (.722) record during his short tenure.

Beck served for 16 years as the Gorillas' offensive coordinator and 22 seasons as a member of the Pitt State coaching staff before becoming his alma mater's 14th Head Football Coach at a press conference on Dec. 9, 2009.

Beck led Pitt State to the school's fourth all-time national championship and a 13-1 record in his second season leading the Gorillas. He earned NCAA Division II National Coach of the Year honors from Liberty Mutual, the Don Hansen Football Committee and FieldTurf™, as well as MIAA Coach of the Year accolades.

In his inaugural season, Beck guided a youthful Pitt State squad to a 6-6 overall record, including a 13-9 victory over Concordia-St. Paul in the 2010 Mineral Water Bowl at Excelsior Springs, Mo.

In year two, the Gorillas won their first eight games, including a dramatic final second 38-35 victory over No. 1 ranked Northwest Missouri State University in The Fall Classic at Arrowhead X on Oct. 1. Pitt State clinched its first MIAA title since 2004 with a 51-28 victory over Missouri Southern in the regular season finale.

The Gorillas went on to post home victories over Washburn (31-22), NW Missouri State (41-16) and Delta State (49-23) to reach the NCAA-II National Championship Game for the fifth time in school history. At Florence, Ala., Beck's Gorillas broke open a 14-13 game with a blocked field goal return for a touchdown and a last-minute score to take a 27-14 halftime advantage against Wayne (Mich.) State. The Gorillas claimed the title with a 35-21 victory over the Warriors.

Last year, the Gorillas won their first five games before finishing the season with a 7-3 record.

Beck previously served as Assistant Head Coach for two years, after being named to that role on the Pitt State staff on December 13, 2007.

During his 16 seasons as offensive coordinator, the Gorilla offense consistently ranked among the finest units in NCAA Division II.

In 2008, Beck was selected the inaugural NCAA Division II Coordinator of the Year by FootballScoop.com, following a vote of his coaching peers.

In 2004, Beck's offensive unit established itself as the most prolific squad in the history of NCAA football. PSU shattered a 118-year-old scoring record, scoring an amazing 837 points (55.8 ppg). His squad also set the NCAA all division records for rushing (5,320 yards) and total offense (8,976 yards).

Beck's teams twice led Division II in scoring (2004, 2006) and ranked in the top two nationally in total offense three times (2004, 2005, 2006). His squads ranked among the national rushing leaders every season, leading Division II in 1995 (318.8 ypg) and 2004 (354.7 ypg).

Beck's "multiple choice" option attack also compiled 16,483 passing

yards (216.9 ypg) and 143 aerial-touchdowns during his final six seasons as offensive coordinator (2004-09).

Prior to assuming the offensive coordinator's role, Beck served two years as Pitt State's defensive coordinator (1992-93). He became a full-time assistant on the Pitt State staff in 1989, after serving first as a student assistant (1987) and then as a graduate assistant (1988).

Beck worked with defensive ends, tight ends and wide receivers during his initial two seasons, before concentrating primarily on the inside linebacking corps from 1989-93. He worked with PSU's quarterbacks from 1994-2009.

During his tenure on the PSU staff, Beck has coached 47 All-Conference players and 23 All-Americans.

Beck was a two-year football letterman at Pittsburg State, playing defensive back for the Gorillas from 1985-86. He earned All-CSIChonors both seasons and was an NMAA All-District 10 pick as a senior. Beck also was a team captain in 1986.

Beck, a Ness City, Kan., native, played football at Dodge City Community College for two years before joining the Gorilla program. He earned his bachelor's degree in physical education from PSU in 1988 and a master's degree in physical education from PSU in the summer of 1989.

He is married to the former Gena Thomas, who competed in track & field and cross country for Pittsburg State from 1987-88. She serves as the Director of Donor Research in the PSU Development Office. The couple have a son, Derek, who turns 19 on Dec. 25, a daughter, Sydney, who turns 17 on Dec. 30, a son, Drew, who turns 14 on July 24, and a daughter, Samantha, who turns eight on Feb. 11. Derek is a redshirt freshman receiver for the Gorillas.



DAVID WIEMERS

Defensive Coordinator/
Assistant Head Coach



STEVE RAMPY

Offensive Coordinator



LANCE CULLEN

Defensive Secondary



RYAN HELLWIG

Defensive Line



JOHN PIERCE

Running Backs



CARL ROTH

Linebackers



STEVE WELLS

Offensive Line



LARRY GORMAN

Off-Campus Recruiting



JOHN KEMP

Defensive Secondary



FRANK NACCARATO

Wide Receivers



NEAL PHILPOT

Wide Receivers



DARRIEN GORDON

Defensive Secondary



IKE EGUA

Graduate Assistant



MARK CHESNUT

Student Assistant



LUKE MILLER

Student Assistant



ZACH RAMPY

Student Assistant



JOHN JOHNSON

Strength Coach



People and Community Are What Counts

Good Luck Pittsburg State Gorillas!

Commitment to our customers has been and will always be top priority. Call, click, or come by to discover how we combine products and people to not only meet, but exceed your local banking expectations.

We ask, listen and solve.



Commerce Bank
Member FDIC

commercebank.com / 231-8400

2013 PITT STATE FOOTBALL

ATHLETIC DIRECTOR JIM JOHNSON



Jim Johnson became the 10th all-time director of intercollegiate athletics at Pittsburg State University on July 30, 2010. He officially began his tenure at the school five weeks later on Sept. 7, 2010.

As athletics director, Johnson provides leadership and support for the Gorillas' 13 varsity intercollegiate sports programs as well as the department's more than 50 full-time and part-time

administrative and coaching staff members.

Johnson also provides leadership in the development and implementation of a departmental strategic plan that is aligned with the university's strategic plan; provides oversight of compliance with NCAA and MIAA rules and work in conjunction with the MIAA office in support of conference activities and initiatives; develops and advances marketing, communications, sponsorship, and fundraising in support of PSU and its athletics program and develops and nurtures relationships with donors, local corporations, and community entities in support of the athletics programs.

Johnson served as commissioner of the MIAA from July 1, 2007 through July 30, 2010, serving as chief operating officer for the 12-member conference, of which Pitt State is a member. He handled the administration of conference championships for 17 sports and provided leadership in areas of marketing and promotions, broadcasting, personnel management, rules compliance, strategic planning, officiating and media relations, as well as provided oversight and management of annual financial resources totaling more than \$1 million.

From 2005 to 2007 he held the position of athletics director at Texas A&M University-Commerce, before taking his assignment with the MIAA. Johnson briefly served as an intercollegiate athletics consultant before becoming the associate athletics director for development in 2003 at the University of Central Missouri.

In 1997, he accepted a position with the National Collegiate Athletic Association, first as a membership services representative and later as a Division II governance liaison. As the governance liaison, Johnson provided legislative and strategic support to the DII Presidents Council, DII Management Council, legislative committee and various project teams and focus groups.

Johnson became the national chair of the NCAA Division II Men's Basketball Committee in June 2010 after serving on the national committee the previous year and held that position until his term

ended on July 31, 2012. On August 1, 2012, Johnson began a four-year term on the Division II Football Committee. He also served on the NCAA-II Membership Committee from 2005-09, including two years as the national chair (2007-09). Johnson was reappointed in 2011 to the NACDA Executive Committee for a four-year term after serving a one-year term in 2006-07 prior to his departure from Texas A&M Commerce. He's also an active member of the Division II Athletics Directors Association.

Johnson holds both a bachelor's and master's degrees from Tarleton State University, where he served as the compliance coordinator and men's athletic coordinator at Tarleton State from 1993-97.

Jim and his wife, Cindy, have two sons, Ely (14) and Riley (11).



RUSS JEWETT

Senior Associate
Athletics Director/Head
Track & Field Coach



PHIL CARR

Associate Athletics
Director/Head Athletic
Trainer



NATALIE CULLEN

Associate Athletics
Director/Senior Woman
Administrator



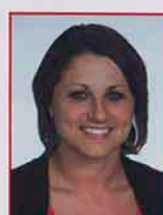
DAN WILKES

Associate
Athletics Director/
Communications



KENDALL GAMMON

Director of Major Gifts



LACIE ANDERSON

Office & Special Events
Manager



MARK DARKER

Finance Manager



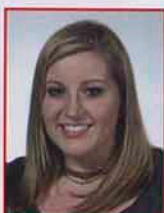
HEIDI JOHNSON

Director of Media
Relations & Promotions



JILL MINNEMAN

Director of Ticket
Operations



CARLA WEHMEYER

Athletics Photographer



BRAD WELLS

Director of Operations

Ron's Supermarket is...

connected2u.

TEXT

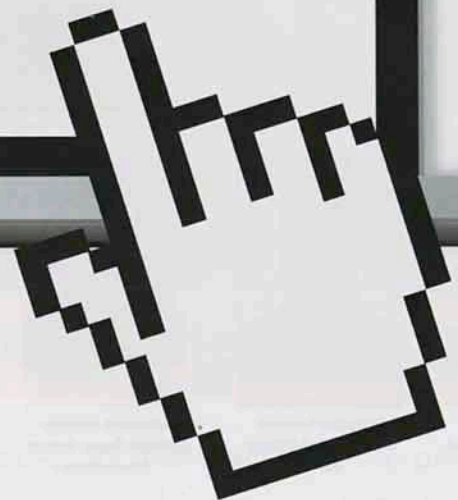
RONs to 72727 to begin receiving exclusive discounts via text message

FACEBOOK

Like us on Facebook!
Just search for Ron's Supermarket.

WWW

visit us on the web at
www.RonsSupermarket.com



Official Grocery Store of Pitt State Athletics & Sponsor of Tailgater of the Game

310 East Centennial, Pittsburg • (620) 231-7920

2013 PITT STATE FOOTBALL

DR. STEVE SCOTT, PRESIDENT



Dr. Steven A. Scott, a native of Baxter Springs, Kan., earned a BSED in mathematics from Pittsburg State University in 1973, an MS in mathematics from Oklahoma State University in 1977, an EdS from Pittsburg State University in 1984, and an EdD from Oklahoma State University in 1990.

Dr. Scott began his lifelong career in education as a teacher and coach at the Riverton Junior and Senior High Schools. He also taught and coached at the Miami (Okla.) Public Schools. From 1981 until 1988, Dr. Scott taught computer science courses at Northeastern Oklahoma A & M College in Miami. He joined the PSU faculty in 1989 as an assistant professor in the Department of Curriculum and Instruction. In 1995, Dr. Scott was named chairman of the Department of Special Services and Leadership Studies. From 1999 until 2006, he served as dean of the College of Education and was named vice president for academic affairs in 2006.

In June 2008, the title of Provost was added, recognizing the broad scope of Dr. Scott's leadership activities throughout campus. In 2009, the Kansas Board of Regents selected Dr. Scott to become the ninth president of Pittsburg State University.

Among his many responsibilities at PSU, Dr. Scott has been highly involved in the university's strategic planning process, academic program review, accreditation, and meeting the university's performance agreements with the Kansas Board of Regents.

Dr. Scott has written and presented in a variety of forums and formats in support of the use of instructional technologies by K-12 teachers. In addition, his grant writing efforts have yielded more than a million dollars in externally-funded projects that have benefitted hundreds of teachers, numerous school districts, the Greenbush Service Center, and other institutions of higher education.

Dr. Scott is a recipient of the PSU Outstanding Alumni Award, the Office of Multicultural Affairs' PSU Outstanding Chairperson Award, and the Southeast Kansas Education Service Center's Putting Kids First Award.

Dr. Scott and his wife, Cathy, live in Pittsburg. They have two grown children, Kylie and Phillip.



KANSAS BOARD OF REGENTS

The Kansas Board of Regents is a nine-member body appointed by the Governor, confirmed by the Kansas legislature, that governs the six public universities, supervises state-supported educational programs at the 19 community colleges and 11 technical schools and colleges and coordinates all 37 public postsecondary institutions in Kansas. Fred Logan of Prairie Village serves as board chairman, while Kenny Wilk of Lansing serves as vice chair.

Photo
N/A

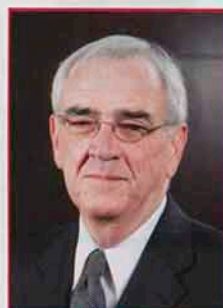
Shane Bangerter
Dodge City

Photo
N/A

Ann Brandau-Murguia
Kansas City



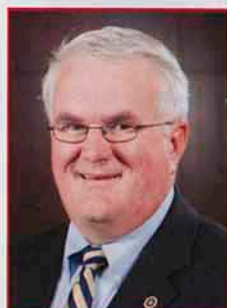
Mildred Edwards
Wichita



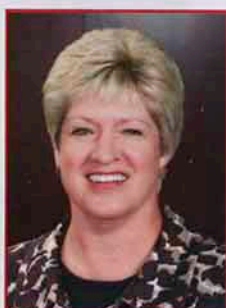
Tim Emert
Independence



Fred Logan
Prairie Village



Ed McKechnie
Pittsburg



Robba Moran
Hays

Photo
N/A

Helen Van Etten
Topeka



Kenny Wilk
Lansing



Andy Tompkins
Topeka (Pres/CEO)

Push'em back, Push'em back, waaay back.

Get discounts up to 40%*.

Call, click, or visit on your car insurance and find out how you can save money by switching to the #1 team.

Like a good neighbor, State Farm is there.®

CALL FOR A QUOTE 24/7.



Rex Garner

1317 N Broadway
Pittsburg, KS 66762
Bus: 620-231-7882

rex.garner.b6vc@statefarm.com



Lori Ann Spachek

2809 N Broadway Suite C
Pittsburg, KS 66762
Bus: 620-231-2027

www.loriannspachek.com



Kellan Foster

3640 E 7th Street
Joplin, MO 64801
Bus: 417-623-1700

www.kellanfoster.com



Connie Shiverdecker

1018 Main St
Neodesha, KS 66757
Bus: 620-325-2938

www.connieshiverdecker.com



Terry Bessman

120 N Kansas Avenue
Columbus, KS 66725
Bus: 620-429-2480

www.terrybessmaninsurance.com



Kyle Hickam Ins Agency Inc

Kyle Hickam
2606 E 32nd Street
Joplin, MO 64804
Bus: 417-624-8443



Harold Mann Insurance Agency Inc

Harold Mann
1109 W 8th
Coffeyville, KS 67337
Bus: 620-251-3680



Ryan Disbrow

115 N Maple Street
Garnett, KS 66032
Bus: 785-448-1660

www.ryandisbrow.com



Betty Blubaugh

1730 Broadway
Parsons, KS 67357
Bus: 620-421-4010

www.bettyblubaugh.com



Matthew P Davidson

1029 Gulf Street
Lamar, MO 64759
Bus: 417-682-3395

www.mattdavidsoninsurance.com



Jennifer Dietsch

821 West Main Street
Chanute, KS 66720
Bus: 620-431-4280

www.jenniferdietsch.com



Darold L Elrod Ins Agency Inc

Darold Elrod
205 East Main
Chanute, KS 66720
Bus: 620-431-2680



Francis Buche

711 S Broadway
Pittsburg, KS 66762
Bus: 620-231-5080

www.francisbuche.com



Les Hammett

3021 Main
Parsons, KS 67357
Bus: 620-421-2170

www.leshammett.com



Jerry Poston

1601 S Garrison
Carthage, MO 64836
Bus: 417-358-5052

www.jerryposton.com

statefarm.com®

 **State Farm™**



COMMITTED TO THE COMMUNITY

Teamwork is critical to success in sports, helping one another to achieve victory. Arvest is proud to team up with our community to help support our athletes. We provide complete financial support when and where you need it. All the services of a large bank with the personal touch of a community banker - Arvest Bank.

216 N Broadway, Pittsburg
(620) 231-2350
arvest.com

We are a proud gameday sponsor
of the Pitt State Gorillas!

ARVEST[®]
BANK

Member FDIC
 EQUAL HOUSING
LENDER



TOYOTA • SCION • VOLKSWAGEN

785-843-7700 • 1-800-787-9664

3400 South Iowa, Lawrence, KS

*The Miles Schnaer family and
Crown Toyota, Scion & Volkswagen
are proud supporters of*



Pittsburg
State
University

Paula (Beebe) Schnaer

*Bachelor of Science
Education '72*

Mandi (Schnaer) Dow

*Bachelor of Science
Education '99*

Ali Schnaer

**Maddox Miles
Dow**

Miles Schnaer

*Bachelor of Science
Biology '71*

www.crownautomotive.com

2013 PITT STATE FOOTBALL

PITTSBURG STATE UNIVERSITY



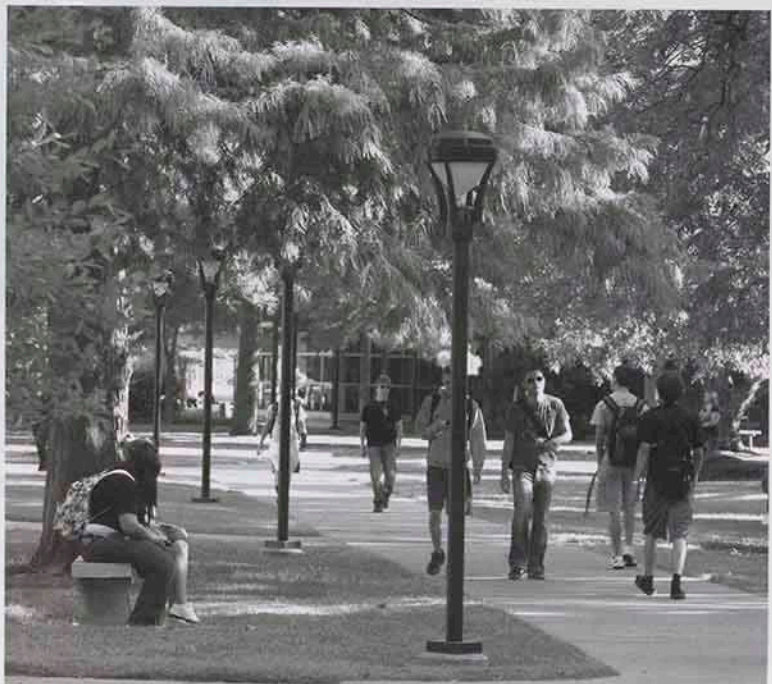
THIS IS PITTSBURG STATE UNIVERSITY

Founded in 1903, PSU was originally known as the State Manual Training Normal School, and featured a modest enrollment of 54 students. The ensuing century saw it evolve into Kansas State Teachers College in 1923, then Kansas State College of Pittsburg in 1959, and finally in 1977 the Pittsburg State University that nearly 7,300 students now attend.

Pittsburg State is considered one of the premiere educational institutions in the Midwest. More than 150 undergraduate and graduate degree programs are offered in the university's four colleges. Each college has earned national recognition for its programs, students and faculty. This recognition can be attributed to the outstanding quality of our faculty and to the student to faculty ratio, which is an incredibly low, 19-to-1. Eight out of ten Pittsburg State University students receive financial assistance.

The university's campus is located on 430 acres of beautifully maintained land in Pittsburg, Kansas. Technology and tradition are featured throughout the campus, with wireless internet available in every building. A sense of academic excellence emanates from the university's buildings, some of which are nearly a century old.

One of six universities governed by the Kansas Board of Regents, Pittsburg State is dedicated to its mission of helping students achieve their full potential.



2013 PITT STATE FOOTBALL

BRANDENBURG FIELD / CARNIE SMITH STADIUM

Pittsburg State University plays its home football games at Brandenburg Field/Carnie Smith Stadium, widely recognized as one of the finest venues in NCAA Division II.

Affectionately referred to as both "The Pitt" and "The Jungle" by Gorilla players and fans, Brandenburg Field/Carnie Smith Stadium provides one of the strongest home field advantages in college football.

Entering the 2012 campaign, Pittsburg State has won 129 of its last 142 regular season home games, posting a 129-12-1 record (.912) over the last 27 seasons.

The Gorillas have won 73 percent of their home games during the 87-year history of the facility, with a 329-118-12 all-time home record since the facility opened in 1924.

PSU's home field advantage strengthened in 2001 with the completion of a \$3.7 million expansion project to Carnie Smith Stadium. With the improvements, all made possible by private funding, an additional 2,300 seats were added to Carnie Smith Stadium, including new club seating on both the East and West stands. The stadium capacity grew from 5,611 permanent seats to 7,950.

Additionally, 16 luxury sky boxes were added to the East side of the stadium. New restroom, concession stand and ticket booth facilities were created, an elevator, handicap accessibility and other ADA improvements were made.

Both the home and visitor locker room facilities underwent major improvements, and a new media room was added to the East side for PSU players and media personnel to utilize.

An additional eight luxury sky boxes and elevator service were added to the West side in the summer of 2006. The \$2.5 million project was made possible by private funding.

In 2008, PSU unveiled its new "Jungletron" video scoreboard — the largest replay board in Division II — in the south end zone of the stadium. This \$1.7 million project was made possible entirely by private funding.

The facility was originally named Brandenburg Stadium, in honor of William Aaron Brandenburg, the first president of the University. It was built in 1923 with volunteer labor and money donated by students, alumni, faculty and citizens of Pittsburg.

In 1987, the University announced that the field would continue to bear the name of PSU's first president, but the stadium would be called Carnie Smith Stadium, in honor of the legendary PSU football coach who led the Gorillas to two NIAA national championships (1957 and 1961) and six conference titles during his tenure from 1949-66.

Construction of the facility began with volunteer labor during the summer of 1923, after a successful fund drive raised the necessary \$100,000 to build the stadium. To ensure its completion by the start of the 1924 season, PSU faculty members were required to help work up to eight hours per week.

On October 11, 1924, the first varsity football game was played at the new facility between PSU (known as Kansas State Teachers College) and Baker University, in front of approximately 4,000 fans. The team didn't disappoint all of those who worked so hard to build the new facility, earning a 6-0 victory. KSTC went on to post a 7-0-1 record that year earning the Kansas Intercollegiate Athletic Conference (KIAC) title under head coach Garfield W. Weede.



Brandenburg

STADIUM RECORDS/MILESTONES

Overall Home Record: 332-120-12 (.728)

Regular Season Play: 308-112-12 (.713)

Post Season Play: 24-8 (.750)

Win No. 1: vs. Baker (6-0), Oct. 11, 1924

Win No. 100: vs. Washburn (27-6), Oct. 29, 1960

Win No. 200: vs. Arkansas-Monticello (23-7), Dec. 3, 1988

Win No. 250: vs. Missouri Southern (21-7), Oct. 19, 1996

Win No. 300: vs. Panhandle State (87-0), Sept. 9, 2006

DECADE BY DECADE

1920s:	12-13-0 (.480)	1970s:	26-22-3 (.539)
1930s:	29-17-1 (.628)	1980s:	50-7-0 (.877)
1940s:	24-16-6 (.587)	1990s:	58-5-1 (.911)
1950s:	31-15-0 (.674)	2000s:	54-7-0 (.885)
1960s:	34-12-1 (.734)	2010s:	13-6-0 (.684)

Consecutive Home Wins: 24 (Oct. 5, 1991 to Nov. 5, 1994)

Consecutive Home Losses: 9 (Oct. 6, 1928 to Oct. 3, 1930)

Undefeated Seasons at Home: 25

(1924, 1932, 1934, 1942-43, 1951, 1957, 1960-62, 1971, 1980-82, 1986, 1988, 1990, 1992-93, 1995, 1998, 2000, 2001, 2006, 2008)

Most Lopsided Home Win: 87-0

vs. Panhandle State, Sept. 9, 2006

Most Lopsided Home Defeat: 63-14

vs. Missouri Western, Oct. 20, 2012

Best Home Record (season): 9-0-0, 2004



Brandenburg Field/Carnie Smith Stadium • Dec. 10, 2011

During the last 15 seasons, Pittsburg State University has averaged 8,100 fans per home game (809,959 fans in 100 games). Last year, PSU averaged 8,657 fans in eight home games, ranking fifth nationally in attendance.

Top Home Game Attendance

(1961-present)

1.	MWSU, Oct. 20, 2012	11,910
2.	NWMSU, Oct. 13, 2001	11,862
3.	LU, Sept. 22, 2012	10,779
4.	UCO, Sept. 8, 2012	10,754
5.	ESU, Oct. 18, 2003	10,383

Top Single Game Attendance

(Home, Away, Neutral)

1.	vs. NWMSU, Oct. 17, 2002	26,695
2.	vs. NWMSU, Nov. 6, 2004	25,542
3.	vs. NWMSU, Nov. 4, 2006	22,561
4.	vs. NWMSU, Oct. 4, 2008	21,316
5.	vs. NWMSU, Oct. 29, 2005	21,044

2013 PITT STATE FOOTBALL

CONFERENCE TITLES

Pittsburg State has won outright or shared a total of 30 conference championships during the 105-year history of its intercollegiate football program, including 15 conference titles in the last 28 seasons.

YEAR	CONFERENCE	HEAD COACH	CONF. RECORD
2011	Mid-America Intercollegiate Athletics Association	Tim Beck	8-1-0
2004	Mid-America Intercollegiate Athletics Association	Chuck Broyles	9-0-0
2003	Mid-America Intercollegiate Athletics Association (tied with Central Missouri, Emporia State, Missouri Western, NW Missouri State)	Chuck Broyles	7-2-0
2001	Mid-America Intercollegiate Athletics Association	Chuck Broyles	8-1-0
1996	Mid-America Intercollegiate Athletics Association (tied with NW Missouri State)	Chuck Broyles	8-1-0
1995	Mid-America Intercollegiate Athletics Association	Chuck Broyles	9-0-0
1994	Mid-America Intercollegiate Athletics Association	Chuck Broyles	9-0-0
1992	Mid-America Intercollegiate Athletics Association	Chuck Broyles	9-0-0
1991	Missouri Intercollegiate Athletic Association	Chuck Broyles	8-0-1
1990	Missouri Intercollegiate Athletic Association	Chuck Broyles	9-0-0
1989	Missouri Intercollegiate Athletic Association	Dennis Franchione	10-0-0
1988	Central States Intercollegiate Conference	Dennis Franchione	7-0-0
1987	Central States Intercollegiate Conference	Dennis Franchione	7-0-0
1986	Central States Intercollegiate Conference	Dennis Franchione	7-0-0
1985	Central States Intercollegiate Conference	Dennis Franchione	6-1-0
1982	Central States Intercollegiate Conference (tied with Nebraska-Kearney)	Bruce Polen	6-1-0
1981	Central States Intercollegiate Conference	Ron Randleman	7-0-0
1979	Central States Intercollegiate Conference (tied with Nebraska-Kearney)	Ron Randleman	6-1-0
1970	Rocky Mountain Athletic Conference	Tom Lester	4-1-0
1966	Central Intercollegiate Conference (tied with Fort Hays State)	Carnie Smith	3-1-0
1961	Central Intercollegiate Conference	Carnie Smith	5-0-0
1957	Central Intercollegiate Conference	Carnie Smith	5-0-0
1955	Central Intercollegiate Conference	Carnie Smith	5-0-0
1951	Central Intercollegiate Conference (tied with Emporia State)	Carnie Smith	4-1-0
1949	Central Intercollegiate Conference (tied with Washburn)	Carnie Smith	5-1-0
1942	Central Intercollegiate Conference	Charley Morgan	5-0-0
1941	Central Intercollegiate Conference	Charley Morgan	3-1-0
1935	Central Intercollegiate Conference (tied with Fort Hays State, Wichita State)	"Blue" Howell	3-1-0
1924	Kansas Intercollegiate Athletic Conference	Garfield W. Weede	5-0-1
1919	Kansas Intercollegiate Athletic Conference (tied with College of Emporia)	Garfield W. Weede	5-0-1



**TACO
BELL®**

PROUD TO SUPPORT PITTSBURG STATE UNIVERSITY

**GORILLA
ATHLETICS**

• COME VISIT US AT 1115 S. BROADWAY •

2013 PITT STATE FOOTBALL

GORILLA FUND

The Gorilla Fund is the name established in 2011 for the program previously referred to as the Scholarship & Fund Drive and encompasses all components of the annual fund drive which supports not only scholarships but many other needs and costs that continue to rise annually and are essential for athletic and academic success.

With the exception of major gifts for programs and facilities, the Gorilla Fund combines all annual fundraising efforts into one overall program. Each year revenue goals are established for each of the Gorilla Fund components resulting in an overall annual goal for the Gorilla Fund itself. Note that this goal does not include ticket sales or parking revenue projections as those are considered "gate receipts" and represent a different revenue line item in the overall athletics budget. Other miscellaneous revenue is also considered in the overall athletics budget such as facility rental, special event revenue, camps, etc.

The Gorilla Fund consists of the following components:

- Football Season Ticket Access Program (i.e. annual Fund);
- Gorilla Nation and Gorilla Access
- Pitt Crew Youth Booster Club
- Gorilla Gala
- Program-Specific Fundraisers (e.g. hit-a-thons, lift-a-thons, golf tournaments, drawings, etc.);
- Community and Corporate Sponsorships and Partnerships;
- Merchandise and Apparel Sales (via website); and
- Program-Specific Designated/Restricted Donations.

The Gorilla Fund and its components are administered by the athletics department with assistance from the University Development staff. The Gorilla Fund Advisory Board members are listed below. This group meets annually with the athletics staff to discuss changes for the following year in terms of ticket policies and prices, parking and tailgating policies and enhancements, ticket access donation levels, etc. A special thanks to these individuals for their time and effort to advance the athletics program.

Joe Beitzinger
Steve Beykirch
Mike Carpenter
Dennis Gatewood
Wayne Gilmore
Brian Jones

Mike Lewark
Todd McKnight
Brian Pinamonti
Bob Stefanoni
Corey Williams

In an effort to not omit any donors and participants and so that the list can be kept fresh and current, a listing of donors does not appear in the game program as it would be immediately obsolete. A current list of all of those individuals and businesses who support the Gorillas through donations and gift-in-kind contributions can be found online at:

www.pittstategorillas.com/giving

Visit that site to find a list of donors and partners of many components of the Gorilla Fund.

2013 PITT STATE FOOTBALL

ENDOWMENT FOR EXCELLENCE IN ATHLETICS PROGRAM

From 1987-2012, the Endowment for Excellence in Athletics was a special program initiative to increase support for athletic scholarships. Local businessman and ardent Pitt State Athletics supporter Wayne Allai initiated this outstanding program, which has guaranteed crucial financial support for Gorilla teams for the past quarter century.

Wayne, a 1994 inductee into the PSU Athletics Hall of Fame for Meritorious Achievement, passed away on March 5, 2003. Wayne's wife, Jan, and long-time Endowment supporter A.J. Menghini carried on the oversight of the Endowment for Excellence in Athletics program following his passing.

Thanks to Wayne Allai's vision, Pittsburg State University student-athletes will continue to benefit from the generosity of the Endowment for Excellence in Athletics donors listed below:



Adrian Bank — Gene Irvin
Wayne * & Jan Allai
Dr. & Mrs. W. Wesley Allai
Dr. & Mrs. James M. AuBuchon
Mr. & Mrs. George M. Barberich
Mr. & Mrs. James L. Barone
Mr. Charles (Ted) Barnard *
Ray * & Carolyn Barto
Dr. & Mrs. Kenneth K. Bateman
Tim & Gena Beck
Joe & Christl Beitzinger
Mr. & Mrs. Jim Bishop
Dr. & Mrs. Thomas W. Bryant
Leroy & Elaine Castagno
The Joe Castelli Family
Mr. & Mrs. Paul R. Chappell
Elmer * & Virginia L. Christy
Mr. & Mrs. Gary J. Cinotto
Homer & Evelyn * Cole

Mr. & Mrs. Gene Corsini
Moe & Anita Cotter
Mr. Lee Crawley
Jack & Janet Cremer *
Mr. & Mrs. J.S. Crutcher
Bill * & Barb Darland
William L. Dillion, M.D.
Mr. & Mrs. Roger E. Doue
Mr. & Mrs. Barry D. Draper
Mr. & Mrs. Gordon W. Elliott
Mr. & Mrs. Peter J. Farabi
Mr. & Mrs. Daniel J. Farrell
Judi & Mike Fast
George * & Earleen Fauvergue
Mr. & Mrs. Bill Fowler *
Mr. F. David Fowler
Mr. & Mrs. Joe Fowler
The Fowler Family
Mr. Peter W. Giddings *

Mr. Martin Golob * &
Ms. Karenjo Golob Heronemus
George & Marelu * Graham
Joe & Debra Grisolano
Lebro & Jeanne Grisolano *
Dr. Robert V. & Patty * Haderlein
Bill & Avys Hagman *
Kenneth * & Linda Hagman
Mr. & Mrs. Harlan L. Hess
Clyde F. * & Eda R. Hobson
Dr. & Mrs. Donald M. Holsinger
Mr. Henry Jelochan *
Leon & Marie Jursche *
Dr. John & Patricia * Kazmierski
John & Rosie Levra
Mike & Shirley Loy *
Mr. & Mrs. Brad J. Mattivi
Mr. & Mrs. A.J. Menghini
Peter & Maralyne Monsour *

Owen "Cobb" & Irma O'Hara *
Robert * & Betty Osborn
Mr. & Mrs. Bill M. Rink *
Jack * & Yvonne Robertson
August * & Helen Rua
Mr. & Mrs. David A. Rua
Mr. & Mrs. Raymond M. Ryan
Mr. Fred J. Spigarelli
Mrs. Emily Lu Stocker
Maj. Gen. (Ret) & Mrs. Jack Strukel, Jr.
Mr. & Mrs. Charles Sturdevant
Mr. & Mrs. Robert Terlip *
Mr. & Mrs. J.B. Townner
Mr. & Mrs. David Utermohlen
Mrs. Vera Vinze *
Earl & Betty Ward
Chris White
Mr. & Mrs. George A. Zugmierz
* deceased

2013 PITT STATE FOOTBALL

FOOTBALL LETTERMEN'S FUND DONORS (AUG. 1, 2012 - AUG. 15, 2013)

The following individuals or businesses made contributions to the PSU Football Lettermen's Fund &/or the 2013 Gorilla Golf Invitational between Aug. 1, 2012, & Aug. 15, 2013.

Adrian Bank
Mrs. Janette Allai
Mr. & Mrs. Robert D. Allen
American Football Coaches Foundation
Apollo Surgical Group LLC
Arma Drug, Inc.
Mr. Wesley P. Baker
Mr. & Mrs. Don W. Barcus
Brian Barta
Mrs. Ruth A. Beal
Gerald O. Beaman
Mr. & Mrs. Paul E. Beck
Mr. Joe A. Beitzinger
Mr. Steve F. Beykirch
Mr. Leonard E. Bierman
Mr. John A. Britton
Roy & Wanda Cagle
Mr. & Mrs. John A. Calo
Carter Company
Mr. Eric W. Clawson
Coldwell Banker Jim Bishop & Associates
Mr. John C. Collar
Richard Emmett Colliver
Colliver Amati Consulting
Coleman Family Foundation, Inc.
Commerce Bank
Mr. Jim F. Conrad
Alfred Eugene Corsini
Mr. & Mrs. Maurice H. Cotter
Mr. Gerald Creed
Crossland Construction Company, Inc.
Daino Properties
Mr. Eldon Danenhauer
Mr. Marc R. DeGiusti
Mrs. Jane V. Doherty
Edwards and Wilson Periodontic, PA
Eightball Productions, Inc.
J.W. Emerson
Dr. Larry Dean Evans
Billy K. Ewy
Farmers National Bank of Kansas
Fox Insurance Agency
Mattie E. Foxx
Frank Fletcher Toyota
Mr. Max C. Gallaway
Kendall Gammon
Mr. & Mrs. Tom Gosch
Mrs. Mary E. Graber

Mr. Troy L. Graham
Mr. Bob Grant
Chris M. Hall
Harry's Cafe, Inc.
Mr. Mickey L. Heatherly
Gale A. Hellwig
Mr. & Mrs. Harlan L. Hess
Mr. & Mrs. Michael A. Hessman
Mr. Harry L. Hester
Mr. & Mrs. Leroy D. Heusted
Mr. Charles F. Hinton
Mr. Alan D. Hobson
Homer Holmes
Brain Hoover
Gregory Hough
Mrs. Dee Hough
Mr. Chuck Hosman
Mr. Robert Howdeshell
Mr. Charles B. Howton
Mr. Jerry D. Hudson
Mr. Sterling D. Hudson
James Van Becelaere Company, Inc.
Jay Hatfield Chevrolet Buick Pontiac
Jim's Steak House and Lounge
Jostens, Inc.
Jostens of Southeast Kansas
Dr. Shane R. Kannarr
Mr. Tom B. Kennard
Mr. & Mrs. Larry J. Kramer
Bill Kroenke
Mr. Matt B. Laincz
The Laing Family Trust
Mr. & Mrs. John L. Levra
Mrs. Kimberly F. Little
Mr. Jerald D. Louthan
Mr. Christopher M. Lutz
Mr. Jim L. Manley
Mr. Ken C. Manley
Mr. Timothy W. Manley
Bob Marshall
Mrs. Janet Mayhew
Mr. & Mrs. Brian E. McKenna
Mr. A.J. Menghini, Jr.
Mrs. Martha S. Miller
Miller Family Foundation, Inc.
Jeremy Moss
Mr. Steven E. Neville
Robert P. Numrich
Mr. Jack H. Overman
Mr. Joshua A. Paoni
Parsons Farms, LLC
Mr. Christopher S. Patterson
Mr. Albert L. Phillips
Scot Phillips

Mr. & Mrs. John W. Pierce
Pitt Discount Liquor
Mr. Mark A. Plummer
PMG Solutions, LLC
Mrs. Diana R. Polston
Mr. Doug Potts
Mr. Bill C. Presson
Mrs. Martha M. Puskas
Germaine N. Race
Mrs. Janet K. Rexwinkle
John R. Rexwinkle
Richard E. Colliver Living Trust
John Roderique
Mr. & Mrs. Carl E. Roth
S. E. Dental
Mrs. Jeannie L. Saenz
Mr. Albert L. Schmidt
Mr. Donnell J. Schwarz
Mr. Brett A. Shamblin
Shepherd Of The Hills Historical Society, Inc.
Mr. Eric J. Simmons
Michael W. Slaven
Mark Smith

Mrs. Margaret Stahura
State Farm Insurance Company
Mr. Samuel M. Steele, Jr.
Mr. Robert F. Stringer
Mr. Christopher L. Swartz
Tanner's Bar and Grill
Triple T Foods, Inc.
University Bank
Mr. Vince J. VanBecelaere
Mr. Ron Vignery
Mr. Phil J. Vogrin
A.J. Wachter
Mr. Dustin W. Walters
Mike Ward
Watco Companies, Inc.
Mr. Robert L. Wilbert
April & Dan Wilkes
Mr. Wendell L. Wilkinson
Mr. Ben B. Witty
Mr. John W. Woody
Ken Yoss
Mr. Wayne J. Young

17

Vital Signs

SIGN COMPANY
866.240.SIGN

PROUDLY SUPPORTS *Pitt State* FOOTBALL



SIGNS OF ALL KINDS
DIGITAL SIGNS
VEHICLE WRAPS
BANNERS

Owned and Operated
by
Pitt State Alumni

Your Full Service Sign Company

2013 PITT STATE FOOTBALL

ATHLETIC SCHOLARSHIPS

8993 Football Scholarship
Joseph R. Adams III Scholarship
Christie Allen-Logue Scholarship
Wayne Premo & Jan Allai Athletic Scholarship
Wes & Brenda Lee Allai Football Scholarship
Anonymous Athletic Scholarship
Athletic Endowment Scholarship
Jim & Cathy AuBuchon Athletic Scholarship
George & Linda Barberich Football Scholarship
Ted Barnard Scholarship
J.L. & Donita A. Barone Football Scholarship
Ray & Carolyn Barto Women's Basketball Scholarship
Kenneth K. & Barbara A. Bateman Scholarship
Ralph M. & Mary Alice Bateman Scholarship
Carl Beard Scholarship
Arthur & Carmen Beasley Scholarship
Tim & Gena Beck Football Scholarship
Joe & Christl Beitzinger Athletics Scholarship
E Bezinque Memorial Scholarship
Jim & Nancy Bishop Football Scholarship
G & J Brenner Scholarship
Lavon Brosseau Men's Basketball Scholarship
Carl Broyles Scholarship
Kyle K.B. Broyles Scholarship
Max Broyles Football Scholarship
Tom W. & Koeta Bryant Athletic Scholarship
Capital Campaign Fund Athletic Scholarship
Ted Carnino Basketball Scholarship
Leroy & Elaine Castagno Football Scholarship
Joseph G. Castelli Football Scholarship
Paul & Brenda Rua Chappell Football Scholarship
Elmer & Virginia Christy Football Scholarship
Gary & Margaret Cinotto Scholarship
Evelyn M. Cole Women's Basketball Scholarship
Homer G. & Evelyn M. Cole Men's Basketball Scholarship
Corsi Athletic Scholarship
Moe & Anita Cotter Scholarship
Lee & Ann Crawley Men's Basketball Scholarship
Jack & Janet Cremer Athletic Scholarship
James (Tex) & Audrey Crutcher Football Scholarship
Dale's Sports Scholarship
Bill & Barb Darland Football Scholarship
William L. Dillon Scholarship
Dole Football Scholarship
Roger E. & Agnes Doue Football Scholarship
Barry & Joyce Draper Scholarship

Jesse Eastman Basketball Scholarship
Gordon & Beverly Elliott Athletic Scholarship
Naomi Farabi Women's Basketball Scholarship
James L. Farley Football Scholarship
Lon Farrell Football Scholarship
Vince Fast Athletic Scholarship
Bill & Wadean Fowler Football Scholarship
David Fowler Scholarship
Joe & Suzie Fowler Football Scholarship
John T. Fowler Scholarship
Peter W. & Virginia L. Giddings Athletic Scholarship
Martin T. & Karenjo Golob Heronemus Football Scholarship
George & Marelu Graham Athletic Scholarship
Joe & Debbie Grisolo Scholarship
Lebro (Lee) Grisolo Memorial Scholarship
P & G Gudgen Scholarship
Dr. & Mrs. R.V. Haderlein Scholarship
Ken & Linda Hagman Football Scholarship
William & Avys Hagman Scholarship
Eric Hendrick Football Scholarship
Harlan L. & Carol Billington Hess Scholarship
Clyde F. & Eda R. Hobson Scholarship
Bill E.W. Hollenbeck Football Scholarship
Don & Kay Holsinger Scholarship
Brad G. Holt Football Scholarship
Brian Hutchins Scholarship
A.E. Irvin Football Scholarship
Henry W. Jelochan Athletic Scholarship
Bob Johnson Men's Basketball Scholarship
Leon & Marie Jursche Scholarship
Kansas City Gorilla Club Scholarship
John Patrick Kazmierski & Dr. Lynn Wuthnow Athletic Scholarship
Taylor Kemp "Spirit" Scholarship
John Lance Basketball Scholarship
Tom Lester Football Scholarship
John Levra Football Scholarship
Mike & Shirley Loy Athletic Scholarship
Brad & Gail Mattivi Athletic Scholarship
Harry McDonald Scholarship
Glen & Darlene McLaren Scholarship
AJ & Shirley Menghini Scholarship
Anthony Menghini, Jr. Football Scholarship
Tom & Martha Miller Football Scholarship
W. & D. Miller Scholarship

Will Miller Baseball Scholarship
J & J Miranda Football Scholarship
Peter T. & Maralyne Monsour Athletic Scholarship
Brian Moorman Football Scholarship
William Mounkes Football Scholarship
Joe Murphy Football Scholarship
Mathilde A. Nettek Scholarship
R.A./Z.C. Norris Scholarship
Robert & Betty Osborn Men's Basketball Scholarship
Pepsi Bottling Co. of Pittsburg & Ron's Supermarket Football Scholarship
James R. Peterson Football Scholarship
Thelma Fowler Renfro Scholarship
Tommy Riggs Memorial Scholarship
Bill M. & Edna M. Rink Football Scholarship
Yvonne & Jack Robertson Athletic Scholarship
August & Helen L. Rua Athletic Scholarship
Mr. & Mrs. David Rua of Pittsburg Kansas Scholarship
Bill Russell Baseball Scholarship
Ray & Zoe Ann Ryan Football Scholarship
Ernest Schmidt Basketball Scholarship
Carnie & Cora Smith Football Scholarship
Fred Spigarelli Athletic Scholarship
Michael Spigarelli Football Scholarship
Emily Lu Stocker Gorilla Pride Scholarship
Jack & Gayle Strudel Athletic Scholarship
Charles & Patricia Sturdevant Athletic Scholarship
L B/R K Swisher Scholarship
Tau Kappa Epsilon, Delta Mu Chapter Athletic Scholarships
TeamKong.net Scholarship
Jack Templin Volleyball/Track Scholarship
Bob Terlip Athletic Scholarship
Dick Terwiliger Track Scholarship
Mr. & Mrs. J.B. Towner Scholarship
David C. Uermohlen Golf Scholarship
Mack & Vera (McNamee) Vinze Scholarship
Earl & Betty Ward Scholarship
Karen F. Webb Women's Scholarship
Garfield Weede Track Scholarship
Cecil & Eva Wilkinson Men's Basketball Scholarship
Joe Winchester Men's Cross Country Scholarship
Winfield Scholarship
George & Nancy Zugmiller Athletic Scholarship

Which regional university's business college is listed among the most family friendly schools in the nation?



1. Brigham Young University
2. Dartmouth College
3. Indiana University – Bloomington
4. Pennsylvania State University
5. **Pittsburg State University**
6. College of William and Mary
7. University of Notre Dame
8. Duke University
9. Cornell University
10. University of California – Berkeley

Source: *The Best 296 Business Schools, 2013 Edition*.
Framingham, Mass., The Princeton Review, Inc., page 58.

- In 2010, *Entrepreneur Magazine* ranked the Kelce MBA programs in Accounting and Marketing/Management in the national top 15 for student satisfaction.
- Kelce is consistently named one of the "Best Business Schools" in the nation by *The Princeton Review*.
- The Kelce Enactus student team placed 16th in the 2012 Students in Free Enterprise national exposition and competition.

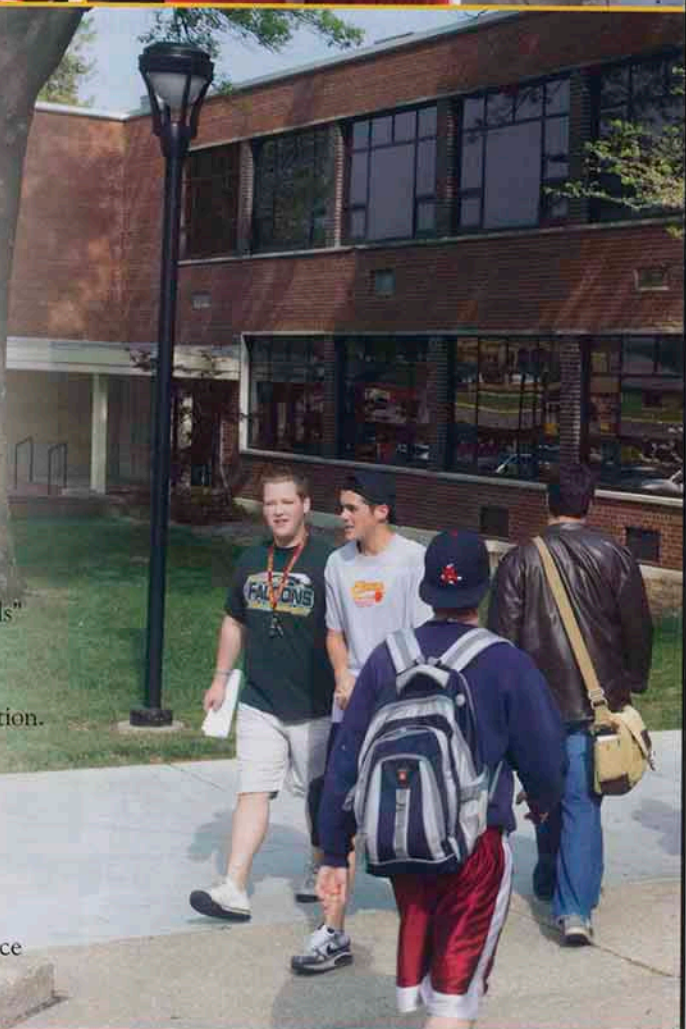


KELCE
COLLEGE OF BUSINESS

Pittsburg State University

national recognition • personal attention • academic excellence

www.pittstate.edu/cob



Visit with Kelce alumni and friends at our hospitality tent before the Family Day (September 21) and Homecoming (October 5) games!

NO. 1 AGAIN

Once again, Freeman Health System ranks as the No. 1 hospital in southwest Missouri by US News & World Report. In addition to receiving high-performing designation in seven specialties, **Freeman was also ranked No. 4 in the state for a second consecutive year.** Such an honor can only be attributed to the caring spirit of our staff, whose compassion knows no bounds, and the loyalty of our patients, whose desire to overcome life's challenges inspires us daily. Thank you for making Freeman the best place to give and receive care.

BEST
REGIONAL HOSPITALS

US News & World Report

SOUTHWEST MISSOURI
RECOGNIZED IN 7 SPECIALTIES
2013-14

BEST
REGIONAL HOSPITALS

US News & World Report

SOUTHWEST MISSOURI
DIABETES & ENDOCRINOLOGY
2013-14

BEST
REGIONAL HOSPITALS

US News & World Report

SOUTHWEST MISSOURI
GASTROENTEROLOGY & GI SURGERY
2013-14

BEST
REGIONAL HOSPITALS

US News & World Report

SOUTHWEST MISSOURI
GERIATRICS
2013-14

BEST
REGIONAL HOSPITALS

US News & World Report

SOUTHWEST MISSOURI
NEPHROLOGY
2013-14

BEST
REGIONAL HOSPITALS

US News & World Report

SOUTHWEST MISSOURI
NEUROLOGY & NEUROSURGERY
2013-14

BEST
REGIONAL HOSPITALS

US News & World Report

SOUTHWEST MISSOURI
ORTHOPEDICS
2013-14

BEST
REGIONAL HOSPITALS

US News & World Report

SOUTHWEST MISSOURI
PULMONOLOGY
2013-14



freemanhealth.org

2013 PITT STATE FOOTBALL



JEFF SEYBOLD, JR.
5-11 • 208 • SO • RB
Lincoln, Neb.



ISRAEL MASELERA
5-8 • 158 • SR • CB
Glenpool, Okla.



DARRACK HARGER
6-4 • 222 • SO • QB
Sand Springs, Okla.



JASON PEETE
6-3 • 191 • JR • S
Olathe, Kan.



JOHN BROWN
5-11 • 170 • SR • WR
Homestead, Fla.



ROBERT MCFIELD
6-6 • 268 • JR • DE
St. Louis, Mo.



RAMSEY HAMILTON
6-2 • 200 • FR-SS • QB
Beggs, Okla.



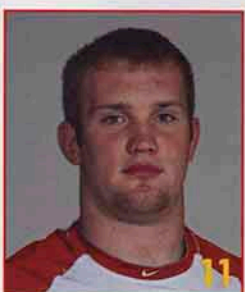
ARIES HERRION
5-10 • 172 • JR • CB
Tulsa, Okla.



MARQUISE CUSHON
5-10 • 156 • SO • WR
Kansas City, Mo.



DENNIS TANNER, JR.
6-3 • 182 • JR • S
Kansas City, Mo.



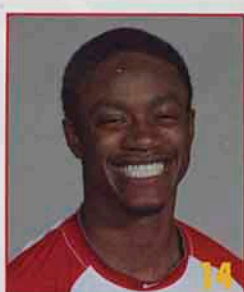
NATE DREILING
6-4 • 226 • SR • LB
Hutchinson, Kan.



ANTHONY ABENOJA
6-3 • 210 • JR • QB
Overland Park, Kan.



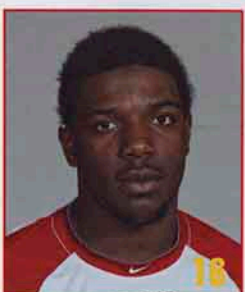
CONNOR FRAZELL
5-10 • 183 • JR • PK
Iola, Kan.



DEVANTE BAUSBY
6-2 • 164 • JR • CB
Kansas City, Mo.



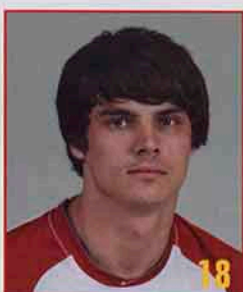
ISAAC MASELERA
6-0 • 181 • JR • S
Glenpool, Okla.



HERMAN MING
6-2 • 190 • SO • WR
Kansas City, Kan.



LEVI KUNTZSCH
6-5 • 211 • SR • WR
Scott City, Kan.



GAVIN LUTMAN
6-4 • 201 • JR • WR
Peculiar, Mo.



KEESTON TERRY
6-3 • 198 • JR • S
Blue Springs, Mo.



ANDRE TAYLOR
5-9 • 178 • JR • WR
St. Petersburg, Fla.



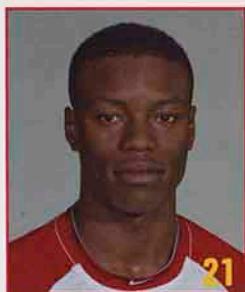
PITTSBURG FORD

1097 S. Hwy 69 • (620) 231-2450



proud members of the
Gorilla Courtesy Car Program

2013 PITT STATE FOOTBALL



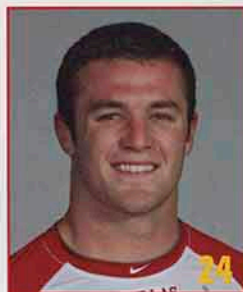
DINO TEAGUE
6-0 • 172 • SO • CB
Tulsa, Okla.



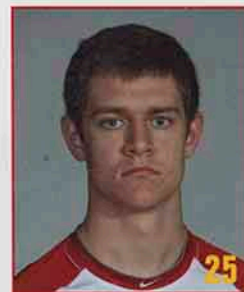
MASON SNOW
6-0 • 167 • FR-RS • WR
Bentonville, Ark.



SOLOMON WATKINS
5-10 • 190 • SR • RB
Sedalia, Mo.



TYLER DISNEY
6-1 • 214 • JR • LB
Stilwell, Kan.



SCOTT RODERIQUE
6-0 • 184 • SO • S
Webb City, Mo.



JAMES CAINE
5-11 • 180 • SR • CB
St. Louis, Mo.



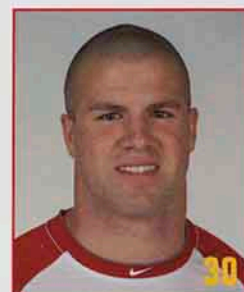
MARKELL WHITE
5-9 • 185 • FR-RS • RB
Lamar, Mo.



JOE WINDSCHEFFEL
6-3 • 228 • SR • LB
Smith Center, Kan.



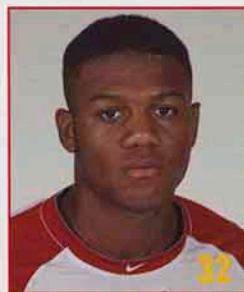
STEVEN SULLIVAN
5-10 • 180 • FR-RS • RB
Blue Springs, Mo.



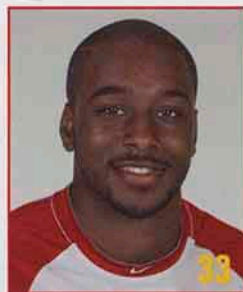
SCOTT LESTER
6-0 • 224 • SR • RB
Andale, Kan.



JARED VINOVERTSKI
6-3 • 210 • SR • S
Lawrence, Kan.



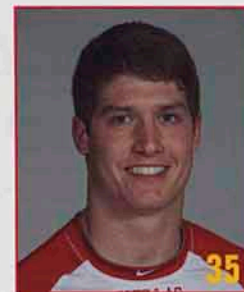
QUAD WARE
6-0 • 192 • FR-RS • S
Broken Arrow, Okla.



QUANDRE HOLMAN
5-9 • 209 • FR-RS • RB
Oklahoma, City, Okla.



BRIAN POSTON
6-0 • 208 • SO • RB
Carthage, Mo.



DANIEL RANK
5-8 • 169 • SR • WR
Arma, Kan.



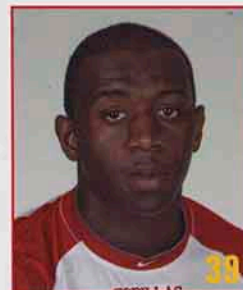
AUSTIN LEAKE
6-1 • 201 • SR • S
Independence, Kan.



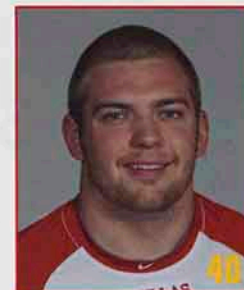
JIMMY WASHINGTON
5-11 • 170 • FR-RS • CB
Wichita, Kan.



CHRIS HEFFERN
5-10 • 180 • JR • S
Iola, Kan.

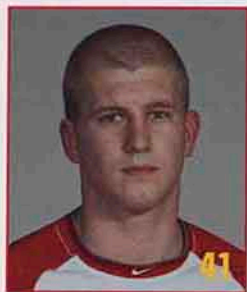


SKYLARR GATSON
5-11 • 189 • FR-RS • S
Wichita, Kan.



TAYLOR COUNTS
5-11 • 213 • SR • RB
Salina, Kan.

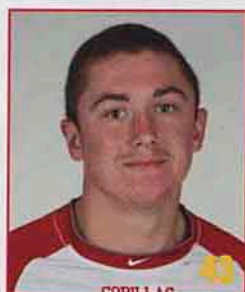
2013 PITT STATE FOOTBALL



LUKE CATLOTH
6-1 • 179 • SR • WR
Olathe, Kan.



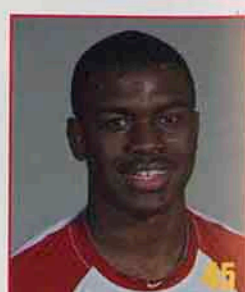
KYLER THOMPSON
6-3 • 225 • JR • DE
LaHarpe, Kan.



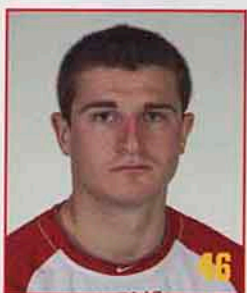
AUSTIN PANKO
6-0 • 177 • FR-rs • WR
Lee's Summit, Mo.



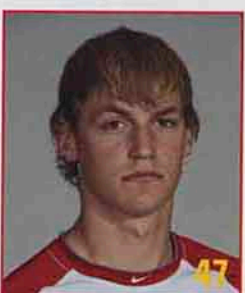
STEPHEN POSTON
6-3 • 220 • SR • WR
Carthage, Mo.



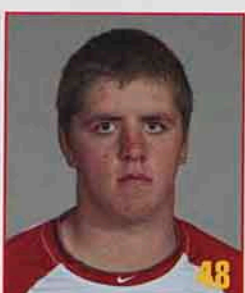
DERON WASHINGTON
6-1 • 191 • SO • S
Raymore, Mo.



CHAD LEVIN
5-8 • 160 • FR-rs • PK
Bentonville, Ark.



GRIFFIN KNOPP
6-3 • 178 • JR • WR/P
Fort Scott, Kan.



ALEX HOWDESHELL
6-1 • 238 • SO • LS
Lee's Summit, Mo.



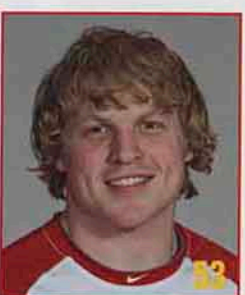
TIMMY CHADD
5-10 • 204 • SO • LB
Wichita, Kan.



COLBY HALL
5-10 • 192 • SO • LB
Lamar, Mo.



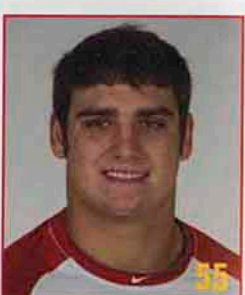
ERIC BRANTLEY
5-11 • 189 • SO • LB
Kansas City, Mo.



DYLAN CASE
5-10 • 204 • SO • LB
Lee's Summit, Mo.



SPENCER BROWN
5-11 • 204 • FR-rs • LB
Lee's Summit, Mo.



HEATH WILSON
6-3 • 250 • FR-rs • DE
Wagoner, Okla.



BLAKE WOELLHOF
6-2 • 210 • FR-rs • LB
Concordia, Kan.



LEWIS FOUTZ
6-3 • 227 • SO • DE
Blue Springs, Mo.



ZACH BURKHART
6-3 • 293 • JR • OL
Mulvane, Kan.

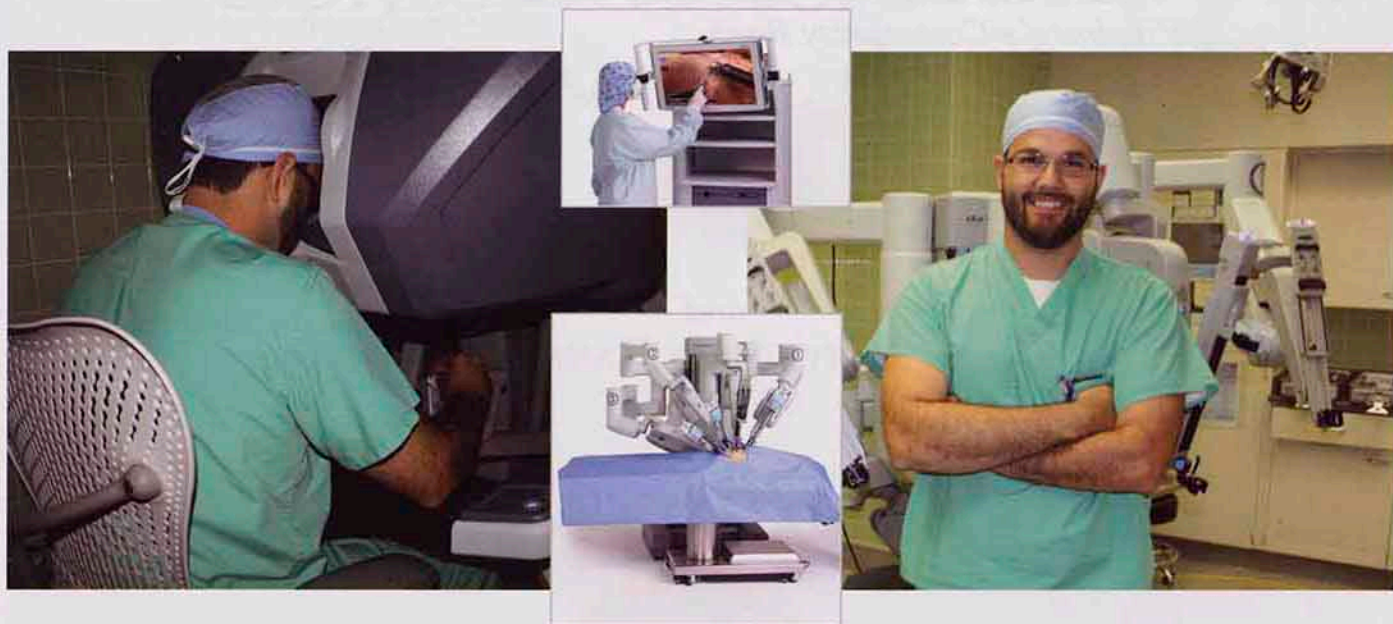


JAKE WALL
6-1 • 253 • FR-rs • OL
Carl Junction, Mo.



CORY PHILLIPS
6-4 • 309 • SO • OL
Blue Springs, Mo.

Leading the way...



Via Christi Hospital Pittsburg, Inc. is ushering our community into 21st century medical technology history with revolutionary robotic assisted surgery. The first ever surgery of its kind performed in southeast Kansas took place August 15, 2013, by Via Christi Hospital ob/gyn Dr. Michael Fenech using the da Vinci Surgery System. Minimally invasive surgery can mean shorter hospital stays and a quicker recovery, returning you to the activities and people you love.



Produce More
Conserve More
Improve Life

MONSANTO



Proud Supporter of Pitt State Football

UNIVERSITY BANK

Pittsburg's Community Bank



and
**UNIVERSITY BANK
ARMA**

Two Great Locations To Serve You!

• SAFE • SECURE • SOUND

Full Service Banking

- Free Checking
- Free Online Banking
- Free ATM Debit Card
- Full Service Brokerage Available
- Very Competitive CD Rates

We Invest In Our Communities

- Home Loans
- Refinancing an Existing Mortgage
- Home Equity Loans
- Commercial and Agricultural Loans
- Installment Loans

**All Loan/Borrowing Decisions
Are Made Locally**



1206 S. Broadway
(620) 231-4200
www.ubpittsburg.com



501 E. Washington
(620) 347-4862
www.ubarma.com



CRIMSON VILLAS AT ROUSE CROSSING



1904 S. Rouse
Pittsburg, KS 66762

620-875-3730

facebook.com/crimsonvillas
crimsonvillas.com

Amenity Rich Student Living!

Sparkling Pool, Free Tanning, 24 Hour Laundry and Fitness Center, Controlled Access, On-Site Maintenance and Management Team, High-Speed Internet, Great Location, On PACT Bus Route

"We're the Gorillas from the Villas..."

2013 PITT STATE FOOTBALL



No. 14 PITTSBURG STATE

(2-0, 2-0 MIAA)

VERSUS

SOUTHWEST BAPTIST

(0-2, 0-1 MIAA)



TONIGHT'S GAME OFFICIALS: DON HUTCHESON (REFEREE), CHIP LOTT (UMPIRE), ALAN MAKOVICKA (HEAD LINESMAN), ERIC COOPER (LINE JUDGE), MATT POWELL (FIELD JUDGE), BO UHRMACHER (SIDE JUDGE), GREG LAURENTIUS (BACK JUDGE)

PITTSBURG STATE (2-0, 2-0 MIAA)

S7	NORTHEASTERN STATE *	W, 45-6
S14	at Central Oklahoma *	W, 65-24
S21	SOUTHWEST BAPTIST *	7 p.m.
S28	at Lincoln *	2 p.m.
O5	ABILENE CHRISTIAN	2 p.m.
O12	at Central Missouri *	1:30 p.m.
O19	vs. No. 3 NW Missouri State *	3 p.m.
O26	at No. 6 Missouri Western *	1:30 p.m.
N2	Northwestern Oklahoma	2 p.m.
N9	at Lindenwood *	2:37 p.m.
N16	MISSOURI SOUTHERN	2 p.m.

* MIAA game

SOUTHWEST BAPTIST (0-2, 0-1 MIAA)

S7	at Truman	L, 37-40
S14	LINDENWOOD *	L, 27-35
S21	at No. 14 Pittsburg State *	7 PM.
S28	MISSOURI SOUTHERN *	6 p.m.
O5	No. 22 WASHBURN *	2 p.m.
O12	at Emporia State *	2 p.m.
O19	at Fort Hays State *	2 p.m.
O26	NEBRASKA-KEARNEY *	1 p.m.
N2	at Northeastern State *	2 p.m.
N9	CENTRAL OKLAHOMA *	1 p.m.
N16	at Lincoln *	2 p.m.

* MIAA game

MIAA STANDINGS

Pittsburg State (14)	2-0	2-0
Washburn (22)	2-0	2-0
Emporia State	2-0	2-0
Lindenwood	2-0	2-0
Missouri Southern	2-0	2-0
NW Missouri State (3)	1-0	2-0
Missouri Western (6)	1-0	2-0
Lincoln	0-1	1-1
Southwest Baptist	0-1	0-2
Central Missouri	0-2	0-2
Central Oklahoma	0-2	0-2
Fort Hays State	0-2	0-2
Nebraska-Kearney	0-2	0-2
Northeastern State	0-2	0-2

This Week's Action

Saturday, September 21

LWU @ UCM, 1:30 p.m.

MWSU @ UNK, 3 p.m.

ESU @ UCO, 6 p.m.

SBU @ PSU, 7 p.m.

LU @ MSSU, 2:37 p.m. (TV)

WU @ NSU, 6 p.m.

NWMSU @ FHSU, 7 p.m.



Welcome to Brandenburg Field/Carnie Smith Stadium for tonight's Mid-America Intercollegiate Athletics Association match-up between Pittsburg State University and Southwest Baptist University.

Pittsburg State, the winningest all-time NCAA Division II program, brings a 2-0 record, including a 2-0 mark in MIAA play, into this evening's contest. The Gorillas, the No. 14 team in the AFCA/Division II, have opened the 2013 campaign with back-to-back lopsided wins over Northeastern State (45-6) and Central Oklahoma (65-24).

Southwest Baptist enters tonight's action 0-2 overall and 0-1 in the MIAA after dropping a pair of hard-fought decisions to Truman (40-37) and Lindenwood (35-27). The Bearcats welcomed back 10 starters (five offense, five defense) from a 3-8 squad in 2012.



THE COACHES

Tim Beck is in his fourth season as head coach at Pitt State. Beck, who has compiled a **28-10 (.737)** career record, led his alma mater (PSU, '88) to the 2011 NCAA Division II National Championship, earning national coach of the year honors from Liberty Mutual, the Don Hansen Football Committee and FieldTurf™.

Beck became the school's 14th all-time head football coach in December 2009, after serving for 23 seasons as an assistant coach for the Gorillas including 16 years as the team's offensive coordinator from 1994-2009.

In 2011, Beck led the Gorillas to the program's second NCAA national championship and the school's fourth national title overall in a 13-1 campaign. Pitt State captured the MIAA Championship and ultimately the NCAA-II National Championship with a 35-21 victory over Wayne (Mich.) State on Dec. 17, 2011.

This will be Beck's second meeting vs. the Bearcats. He is 1-0 vs. SBU.

Southwest Baptist's **Craig Schuler** is in his first year leading the Bearcats. Schuler (Benedictine, '87) came to SBU after nine seasons as assistant head coach/offensive coordinator at MIAA rival Lindenwood. This will be his first meeting vs. Pitt State.

THE PITT STATE-SOUTHWEST BAPTIST SERIES

This will be the 21st all-time meeting between the Gorillas and the Bearcats in a series that dates back to the 1989 season.

Pitt State holds an unblemished **20-0-0** advantage in the series. The Gorillas have averaged a 57-19 victory over the Bearcats in the last seven meetings, dating back to the 2002 season (SBU played an independent football schedule from 2008-11 and did not face PSU in those seasons.)

Last year, Pitt State claimed a 52-9 road win over SBU at Bolivar, Mo., on Sept. 15, 2012. The Gorillas overcame an early 7-0 deficit to score 52 unanswered points with sophomore quarterback Tony Abenoja passing for 259 yards and two scores in the contest. Junior wide receiver John Brown made six catches for 119 yards and a touchdown.

[game notes continued on page 32]

CHATTERS

grill

KITCHEN:

Sun-Thurs 11 AM - 10 PM

Fri-Sat 11 AM - 11 PM

BAR:

Mon-Sun 11 AM - 2 AM

**NOW SERVING BREAKFAST EVERY WEEKEND
7:30 AM - 2 PM**



OVER 20 BOLD FLAVORS

HOURS: Mon-Sun 11 AM - 12 AM

**2401 South Rouse • Pittsburg, KS
(620) 232-7277 • chattersgrill.com**

**Follow us on Facebook:
www.facebook.com/HouseOfWings**

#chatterslife

2013 PITT STATE FOOTBALL

2013 NCAA DIVISION II TOP 25 POLL (RELEASED SEPT. 16, 2013)

School (1st votes)	W-L	Pts.	Prev.	Season Opener	Next Game
1. Valdosta State (28)	1-0	790	1	idle	Sept. 21 vs. Shorter (Ga.)
2. Minnesota State (3)	2-0	765	2	d. Minnesota-Crookston, 68-26	Sept. 21 at No. 7 Minnesota-Duluth
3. Northwest Missouri State	2-0	720	3	d. Central Missouri, 28-24	Sept. 21 at Fort Hays State
4. West Texas A&M	2-0	693	4	d. No. 18 Chadron State, 34-31	Sept. 21 vs. Texas A&M-Commerce
5. Colorado State-Pueblo (1)	2-0	673	5	d. Angelo State, 45-24	Sept. 21 vs. Western New Mexico
6. Missouri Western	2-0	648	6	d. Missouri S&T, 63-3	Sept. 21 at Nebraska-Kearney
7. Minnesota-Duluth	2-0	576	7	d. Upper Iowa, 37-19	Sept. 21 vs. No. 2 Minnesota State
8. Indiana (Pa.)	2-0	560	8	d. Cheyney, 49-0	Sept. 21 at Seton Hill (Pa.)
9. Henderson State	2-0	544	9	d. McKendree, 75-14	Sept. 21 at Southeastern Oklahoma State
10. Grand Valley State	2-0	518	10	d. Truman, 31-15	Sept. 21 vs. Tiffin
11. Carson-Newman	2-0	474	11	d. Colorado Mines, 27-24	Sept. 21 vs. Brevard
12. Indianapolis	2-0	403	14	d. St. Xavier (Ill.), 51-20	Sept. 21 at Drake
13. Bloomsburg	2-0	395	15	d. Edinboro, 47-35	Sept. 21 at Kutztown
14. PITTSBURG STATE	2-0	383	16	d. Central Oklahoma, 65-24	Sept. 21 vs. Southwest Baptist
15. Shepherd (W. Va.)	2-0	333	17	d. Fairmont State (W. Va.), 27-7	Sept. 21 vs. Urbana
16. West Alabama	1-1	280	12	lost to McNeese State, 44-42	Sept. 19 at Florida Tech
17. Tuskegee	2-0	270	19	d. Albany State (Ga.), 19-13	Sept. 21 vs. No. 19 Winston-Salem State
18. North Carolina-Pembroke	2-0	206	23	d. Fayetteville State, 38-24	Sept. 21 vs. Shaw
19. Winston-Salem State	1-1	182	20	d. Virginia-Lynchburg, 62-8	Sept. 21 vs. No. 17 Tuskegee
20. West Chester	2-0	174	23	d. Gannon, 56-41	Sept. 21 at Millersville
21. Chadron State	1-1	142	18	lost to No. 4 West Texas A&M, 34-31	Sept. 21 vs. Colorado Mesa
22. Washburn	2-0	117	NR	d. Fort Hays State, 54-17	Sept. 21 at Northeastern State
23. St. Cloud State	2-0	105	NR	d. Winona State, 29-26	Sept. 21 at Concordia-St. Paul
24. North Alabama	1-1	78	22	lost to Jacksonville State, 24-21, 20T	Sept. 21 vs. Delta State
25. Midwestern State	0-1	70	13	lost to Tarleton State, 27-24	Sept. 21 at West Georgia

Others Receiving Votes: Tarleton State, 54; Emporia State, 49; California (Pa.), 43; Shaw, 35; New Haven, 19; Michigan Tech, 18; Texas A&M-Kingsville, 13; Concord (W. Va.), 12; LIU-C.W. Post, 9; Colorado Mines, 8; Missouri Southern, 8; Saginaw Valley State, 7; Ohio Dominican, 6; North Greenville, 5; Southwestern Oklahoma State, 5; West Georgia, 3; Delta State, 2; Slippery Rock, 2; Wingate, 2; Stillman, 1.

Plate Party with GUS!

**Celebrate Gus' 90th birthday with
HALF-OFF Gorilla license plates!**

September 7-27, 2013

Get a NEW Gorilla license plate and get **HALF-OFF** the PSU donation, **PLUS** you'll be entered to win great prizes, such as Rua Skybox tickets and PSU merchandise.

a \$15 gift to PSU will be due instead of \$30



All other state & county fees will still apply.
Regular \$30 will be due upon your 2014 renewal.

**PSU Alumni and
Constituent Relations**

620-235-4758 or
877-PSU-ALUM
www.pittstate.edu/alumni



Weir
(620) 396-8554

Parsons
(620) 421-5110

AGChoice

A DIVISION OF MFA ENTERPRISES, INC.

Hepler
(620) 368-4347

Chelsea
(918) 789-2559

Moran
(620) 237-4668



2013 PITT STATE FOOTBALL

PSU'S REGULAR SEASON SUCCESS

Pitt State has won 258 of its last 304 regular season games, posting a phenomenal **258-44-2 (.852)** mark during the past 29 seasons (1985-2013).

PSU is **141-14-1** at home, **111-22-1** on the road and **4-8-0** at neutral sites in the regular season during that span.

PITT STATE IN THE AFCA TOP 25 POLL

Pitt State has been ranked in Division II's top 10 **97 times** in the last **180 polls** and the Gorillas have been ranked in the top 25 poll in **154 of 180** weeks overall (dating back to the 1999 season).

The Gorillas, who climbed to No. 14 in this week's poll, have been ranked in the Division II top 15 **136 times** in the last **180 polls**.

GORILLAS IN "THE PITT"

The Gorillas have compiled a **333-120-12 (.729)** record at Brandenburg Field/Carnie Smith Stadium since the facility opened in 1924.

The Gorillas are **165-20-1 (.890)** at home during the past 29 seasons (1985-2013). Pitt State is **143-14-1 (.908)** in 158 regular season home games and **22-6 (.786)** in 28 post-season home games during that span.

PITT STATE ALL-TIME WINNINGEST DIVISION II PROGRAM

Pittsburg State is the all-time winningest NCAA Division II football program. The Gorillas, who are in their 105th season of intercollegiate competition, have compiled a **665-329-48 overall record**, winning 66.1 percent of their 1,042 all-time games.

Pittsburg State is one of just 18 NCAA Division II institutions to have recorded 500 all-time victories and the Gorillas are just one of three schools to have reached the 600-win plateau. Tuskegee is second on the all-time list with 640 victories, followed by Hillsdale (603), Central Oklahoma (592) and Texas A&M-Kingsville (587).

Team	Wins
1. Pittsburg State	665
2. Tuskegee	642
3. Hillsdale	603
4. Central Oklahoma	592
5. Texas A&M-Kingsville	589

(Includes games as NAIA members)

[game notes continued on page 35]

NEPTUNE AUTO

"A Complete Auto Care Center"

902 W. 4th * Pittsburg

(620) 231-5890

**Don't Miss The Neptune Auto
Pitt State Football Showcase at**

**[http://www.youtube.com/
pittstateathletics](http://www.youtube.com/pittstateathletics)**

PITT REALTY

PASTEUR & ASSOCIATES

For All Your Realty Needs

1401 N. Broadway * Pittsburg, KS

(620) 231-0933

www.pittrealty.net

2013 PITT STATE FOOTBALL

PITT STATE ROSTER

NO	NAME	POS	HT	WT	CL	EXP	HOMETOWN	NO	NAME	POS	HT	WT	CL	EXP	HOMETOWN
1	Jeff Seybold, Jr.	RB	5-11	208	So.	1L	Lincoln, Neb.	66	Cody Carlson	LB	5-8	181	Fr.	RS	Berly, Kan.
2	Israel Maselera	CB	5-8	158	Sr.	3L	Glenpool, Okla.	67	Bo Farrow	OL	6-2	250	Fr.	HS	Broken Arrow, Okla.
3	Barrack Harger	QB	6-4	222	So.	1L	Sand Springs, Okla.	68	Boston Higgins	OL	6-3	269	Jr.	2L	Blue Springs, Mo.
4	Jason Peete	S	6-3	191	Jr.	2L	Olathe, Kan.	69	Tank Burns	DL	6-2	282	Jr.	2L	Columbus, Kan.
5	John Brown	WR	5-11	170	Sr.	2L	Homestead, Fla.								
6	Todd Freeman	QB	5-11	173	Fr.	RS	Wichita, Kan.	70	Cale Karigan	OL	6-5	268	Jr.	2L	Paola, Kan.
7	Ramsey Hamilton	QB	6-2	200	Fr.	RS	Beggs, Okla.	71	Jesse Ingle	OL	6-3	255	Jr.	TR	Valley Center, Kan.
8	Aries Herrion	CB	5-10	172	Jr.	2L	Tulsa, Okla.	72	Taylor Peak	OL	6-2	267	Sr.	1L	Girard, Kan.
9	Marquise Gushon	WR	5-10	156	So.	1L	Kansas City, Mo.	73	Ollie Venegas	OL	6-3	300	Jr.	2L	Olathe, Kan.
								74	Austin Vanderpool	LB	5-11	203	Fr.	RS	Shawnee, Kan.
10	Bennis Tanner, Jr.	S	6-3	182	Jr.	2L	Kansas City, Mo.	75	Travis Funk	OL	6-3	305	Fr.	RS	Kearney, Mo.
11	Nate Dreiling	LB	6-4	226	Sr.	3L	Hutchinson/Victoria, Kan.	76	Jordan Wiedemann	S	6-2	191	Fr.	RS	Maize, Kan.
12	Anthony Abenoja	QB	6-3	210	Jr.	2L	Overland Park, Kan.	77	Cody Holland	OL	6-6	334	Sr.	3L	Neosho, Mo.
13	Connor Frazell	PK	5-10	183	Jr.	1L	Iola, Kan.	78	Bo Weber	OL	6-4	273	Fr.	RS	Bentonville, Ark.
14	DeVante Bausby	CB	6-2	164	Jr.	2L	Kansas City, Mo.	79	Tyler Smith	OL	6-4	291	Jr.	2L	Sand Springs, Okla.
15	Isaac Maselera	S	6-0	181	Jr.	TR	Glenpool, Okla.								
16	Herman Ming	WR	6-2	190	So.	1L	Kansas City, Kan.	80	Austin Daniel	WR	6-2	201	So.	1L	Webb City, Mo.
17	Levi Kuntzsch	WR	6-5	211	Sr.	3L	Scott City, Kan.	81	Luke Rumpy	WR	5-9	170	Jr.	2L	Overland Park, Kan.
18	Gavin Lutman	WR	6-4	201	Jr.	2L	Peculiar, Mo. High School	82	Brady Letchworth	TE	6-3	220	Jr.	2L	Blue Springs, Mo.
19	Keeston Terry	S	6-3	198	Jr.	1L	Blue Springs, Mo.	83	Zach Bessette	TE	6-3	225	Jr.	1L	Elysses, Kan.
								84	Bradley Argabright	WR	6-1	182	Jr.	2L	Olpe, Kan.
20	Derek Beck	WR	5-1	165	Fr.	RS	Pittsburg, Kan.	85	Breu White	TE	6-6	239	Fr.	RS	Kansas City, Kan.
21	Dino Teague	CB	6-0	172	So.	1L	Tulsa, Okla.	86	Conner Combes	TE	6-5	250	Sr.	1L	Overland Park, Kan.
22	Mason Snow	WR	6-0	167	Fr.	RS	Bentonville, Ark.	87	Trey Myers	TE	6-4	226	So.	SQ	Kansas City, Mo.
23	Eric Smith	CB	5-10	185	So.	TR	Brentwood, Calif.	88	Kyle Swartz	TE	6-3	226	Fr.	RS	Olathe, Kan.
24	Tyler Disney	LB	6-1	214	Jr.	2L	Stillwell, Kan.	89	Trey Berryberry	WR	5-11	176	Sr.	1L	Garthage, Mo.
25	Scott Boderique	S	6-0	184	So.	1L	Webb City, Mo.								
26	James Gaine	CB	5-11	180	Sr.	TR	St. Louis, Mo.	90	Joe Uzzel	DL	6-4	233	Sr.	3L	Gatoosa, Okla.
27	Savoy Santiago	S	6-0	198	Fr.	RS	Bentonville, Ark.	91	Justin Strong	DL	6-1	242	So.	SQ	Harrisonville, Mo.
28	Joe Windscheffel	LB	6-3	228	Sr.	3L	Smith Center, Kan.	92	Montrae Strickland	DL	6-4	225	So.	1L	Lee's Summit, Mo.
29	Steven Sullivan	RB	5-10	180	Fr.	RS	Blue Springs, Mo.	93	Matt Anderson	DL	6-2	318	Jr.	2L	Sand Springs, Okla.
								94	Will Grissom	DL	6-5	269	Sr.	3L	East Orange, N.J.
30	Scott Lester	FB	6-0	224	Sr.	1L	Wichita, Kan.	95	Derrick Decker	DE	6-5	216	Fr.	RS	Rose Hill, Kan.
31	Jared Vinoverski	S	6-3	210	Sr.	3L	Lawrence, Kan.	96	Dallas Shalz	DL	6-2	228	Jr.	2L	Kansas City, Kan.
32	Quad Ware	S	6-0	192	Fr.	RS	Broken Arrow, Okla.	97	Avery Adair	DE	6-5	228	Jr.	2L	Raytown, Mo.
33	Dre Holman	RB	5-9	209	Fr.	RS	Oklahoma City, Okla.	98	Darian Holmes	DL	6-2	275	Fr.	RS	Kansas City, Mo.
34	Brian Poston	RB	6-0	208	So.	1L	Garthage, Mo.	99	Taye Irvin	DL	6-1	327	So.	1L	LaGrange, Ga.
35	Daniel Rank	WR	5-8	169	Sr.	SQ	Arma, Kan.	Additional Squad Members							
36	Austin Leake	S	6-1	201	Sr.	SQ	Independence, Kan.	Mitchell Argabright	S	5-11	150	Fr.	HS	Olpe, Kan.	
37	Jimmy Washington	CB	5-11	170	Fr.	RS	Wichita, Kan.	Colin Aubuchon	TE	6-3	255	Fr.	HS	Lee's Summit, Mo.	
38	Chris Heffern	S	5-10	180	Jr.	1L	Iola, Kan.	Daniel August	DL	6-4	270	Fr.	HS	Broken Arrow, Okla.	
39	Skytarr Gatson	S	5-11	189	Fr.	RS	Wichita, Kan.	Demetrius Bernard	LB	5-11	225	Fr.	HS	O'Fallon, Mo.	
								Spencer Bernhardt	WR	6-2	180	Fr.	HS	Pittsburg, Kan.	
40	Taylor Counts	RB	5-11	213	Sr.	1L	Salina, Kan.	Brady Bradbury	S	5-9	170	Fr.	HS	Adair, Okla.	
41	Luke Gallo	WR	6-1	179	Sr.	SQ	Olathe, Kan.	Andy Brestel	DL	6-3	285	Fr.	HS	Muskogee, Okla.	
42	Kyler Thompson	DE	6-3	225	Jr.	1L	Lallahe, Kan.	Antoine Brown	DE	6-3	220	Fr.	HS	Tulsa, Okla.	
43	Kyle Anderson	TE	6-4	230	Fr.	RS	Rose Hill, Kan.	David Cardinal Jr.	RB	5-8	205	Fr.	HS	Hays, Kan.	
44	Stephen Poston	WR	6-3	220	Sr.	1L	Garthage, Mo.	Chase Carney	OL	6-5	240	Fr.	HS	Fayetteville, Ark.	
45	Beron Washington	S	6-1	191	So.	SQ	Raymore, Mo.	Ryan Gpircani	OL	6-4	255	Fr.	HS	Overland Park, Kan.	
46	Chad Levin	PK	5-8	160	Fr.	RS	Bentonville, Ark.	Thomas LePage	QB	6-3	180	Fr.	HS	Jefferson City, Mo.	
47	Griffin Knopp	P	6-3	178	Jr.	1L	Fort Scott, Kan.	Carson Letchworth	TE	6-3	230	Fr.	HS	Blue Springs, Mo.	
48	Alex Howdeshell	LS	6-1	238	So.	1L	Lee's Summit, Mo.	Aren Martin	WR	6-1	190	Fr.	HS	Lebanon, Mo.	
49	Nick Sims	CB	5-9	172	Fr.	RS	Wichita, Kan.	Robert McField	DE	6-6	268	Jr.	1L	St. Louis, Mo.	
								Ryan McVerlin	WR	5-9	185	Fr.	HS	Stillwell, Kan.	
50	Timmy Chadd	LB	5-10	204	So.	SQ	Wichita, Kan.	Jared Murphy	DL	6-2	250	Fr.	HS	Prairie Grove, Ark.	
51	Colby Hall	LB	5-10	192	So.	1L	Lamar, Mo.	Alex Norris	S	6-2	210	Fr.	HS	Overland Park, Kan.	
52	Eric Brantley	LB	5-11	189	So.	1L	Kansas City, Mo.	Andy Otting	TE	6-3	230	Fr.	HS	Topeka, Kan.	
53	Dylan Case	LB	5-10	204	So.	SQ	Lee's Summit, Mo.	Austin Panko	WR	6-0	177	Fr.	RS	Lee's Summit, Mo.	
54	Spencer Brown	LB	5-11	204	Fr.	RS	Lee's Summit, Mo.	Jacob Ralph	OL	6-5	280	Fr.	HS	Bentonville, Ark.	
55	Heath Wilson	DE	6-3	250	Fr.	RS	Wagoner, Okla.	Dexton Robertson	OL	6-4	300	Fr.	HS	Cashion, Okla.	
56	Blake Woelhof	LB	6-2	210	Fr.	RS	Concordia, Kan.	Michael Rose	RB	5-10	170	Fr.	HS	Albuquerque, N.M.	
57	Lewis Foutz	DE	6-3	227	So.	1L	Blue Springs, Mo.	Joe Saia	WR	6-3	220	So.	HS	Pittsburg, Kan.	
58	Zach Burkhart	OL	6-3	293	Jr.	TR	Mulvane, Kan.	Ben Saint	OL	6-2	320	Fr.	HS	O'Fallon, Mo.	
59	Jake Wall	OL	6-1	253	Fr.	RS	Carl Junction, Mo.	Kellen Sims	WR	5-11	180	Fr.	HS	Wichita, Kan.	
								José Speer	DE	6-4	220	Fr.	HS	Webb City, Mo.	
60	Cory Phillips	OL	6-4	309	So.	SQ	Blue Springs, Mo.	Ethan Spore	S	6-0	190	Fr.	HS	Oswego, Kan.	
61	Gavin Rainwater	DL	6-2	311	So.	1L	Neosho, Mo.	Andre Taylor	WR	5-9	178	Jr.	TR	St. Petersburg, Fla.	
62	Deaven Jensen	DE	6-1	237	Jr.	TR	Lenexa, Kan.	Christian Thompson	WR	6-3	210	Fr.	HS	Albuquerque, N.M.	
63	Jake Taylor	OL	6-8	294	So.	SQ	Oologah, Okla.	Jaxon Uhles	LB	6-0	235	Fr.	HS	Norman, Okla.	
64	Steyr Stubenrauch	LS	6-0	200	Fr.	RS	Bonner Springs, Kan.	Solomon Watkins	RB	5-10	190	Sr.	3L	Sedalia, Mo.	
65	Drew Gill	LB	6-0	183	Fr.	RS	Pittsburg, Kan.	Kelly Wortham	OL	6-3	270	Fr.	HS	Yukon, Okla.	
								Jaxon Wright	DB	6-0	172	Fr.	HS	Holton, Kan.	
								Deontre Youngblood	DB	6-0	180	Fr.	HS	Tulsa, Okla.	

COACHING STAFF: Tim Beck, Head Coach; Dave Wiemers, Assistant Head Coach/Defensive Coordinator; Steve Rumpy, Offensive Coordinator; Lance Cullen, Secondary; Ryan Hellwig, Defensive Line; Neal Philpot, Wide Receivers; John Pierce, Running Backs; Carl Roth, Linebackers; Steve Wells, Offensive Line; Larry Garman, In-Season Recruiting; Darrien Gordon, Secondary; John Kemp, Secondary; Frank Naccarato, Wide Receivers; John Johnson, Strength; Ike Eguae, Graduate Assistant; Mark Chesnut, Student Assistant; Luke Miller, Student Assistant; Zach Rumpy, Student Assistant.

2013 PITT STATE FOOTBALL

DEPTH CHARTS

PITTSBURG STATE OFFENSE

WR	5	John Brown (5-11, 170, Sr.)
	17	Levi Kuntzsch (6-5, 211, Sr.)
TE	86	Conner Combes (6-5, 250, Sr.)
	88	Kyle Swartz (6-3, 226, Fr-RS)
LT	77	Cody Holland (6-6, 334, Sr.)
	78	Bo Weber (6-4, 273, Fr-RS)
LG	79	Tyler Smith (6-4, 291, Jr.)
	58	Zach Burkhart (6-3, 293, Jr.)
C	72	Taylor Peak (6-2, 267, Sr.)
	58	Zach Burkhart (6-3, 293, Jr.)
RG	73	Ollie Venegas (6-3, 300, Jr.)
	70	Kale Carigan (6-5, 268, Jr.)
RT	68	Boston Higgins (6-3, 269, Jr.)
	71	Jesse Ingle (6-3, 255, Jr.)
WR	80	Austin Daniel (6-2, 201, So.)
	9	Marquise Cushon (5-10, 156, So.)
WR	18	Gavin Lutman (6-4, 201, Jr.)
	84	Bradley Argabright (6-1, 182, Jr.)
QB	12	Anthony Abenoja (6-3, 210, Jr.)
	3	Darrack Harger (6-4, 222, So.)
FB	30	Scott Lester (6-0, 224, Sr.)
	34	Brian Poston (6-0, 208, So.)
TB	1	Jeff Seybold, Jr. (5-11, 208, So.)
	33	Dre Holman (5-9, 209, Fr-RS)
PK	13	Connor Frazell (5-10, 183, Jr.)
LS	48	Alex Howdeshell (6-1, 238, So.)
H	81	Luke Rampy (5-9, 170, Jr.)

PITTSBURG STATE DEFENSE

DE	90	Joe Uzzel (6-4, 233, Sr.)
	57	Lewis Foutz (6-3, 227, So.)
NG	99	Taye Irvin (6-1, 327, So.)
	62	Deaven Jensen (6-1, 237, Jr.)
DT	94	Will Grissom (6-5, 269, Sr.)
	96	Dallas Shalz (6-2, 228, Jr.)
DE	55	Heath Wilson (6-3, 250, Fr-RS)
	97	Avery Adair (6-5, 228, Jr.)
LB	28	Joe Windscheffel (6-3, 228, Sr.)
	24	Tyler Disney (6-1, 214, Jr.)
LB	11	Nate Dreiling (6-4, 226, Sr.)
	52	Eric Brantley (5-11, 189, So.)
CB	21	Dino Teague (6-0, 172, So.)
	8	Aries Herrion (5-10, 172, Jr.)
SS	4	Jason Peete (6-3, 191, Jr.)
	25	Scott Roderique (6-0, 184, So.)
FS	45	Deron Washington (6-1, 191, So.)
	15	Isaac Maselera (6-0, 181, Jr.)
WS	19	Keeston Terry (6-2, 190, Jr.)
	32	Quad Ware (6-0, 192, Fr-RS)
CB	14	De'Vante Bausby (6-2, 164, Jr.)
	37	Jimmy Washington (5-11, 170, Fr-RS)
P	47	Griffin Knopp (6-3, 178, Jr.)
PR	5	John Brown (5-11, 170, Sr.)
KR	5	John Brown (5-11, 170, Sr.)
	9	Marquise Cushon (5-10, 156, So.)

SOUTHWEST BAPTIST OFFENSE

WR	10	Nathan Mourik (6-2, 175, Jr.)
	80	Ivan Lofton (6-3, 180, Fr.)
WR	32	Buck Rodges (6-0, 200, Fr.)
	16	Nyran Ross (5-10, 170, Sr.)
LT	62	Sydney Wiggs (6-4, 280, Jr.)
	70	Dayne Bullock (6-3, 265, Fr.)
LG	73	Jimmy Schmitzer (6-1, 300, So.)
	76	Josiah Quick (6-1, 300, Fr.)
C	53	Cody Cutting (6-3, 270, Jr.)
	55	Brock Baker (6-1, 270, Jr.)
RG	72	Justin Cleeton (6-5, 250, Sr.)
	74	Kaleb Gadson (6-2, 290, Fr.)
RT	63	Derrick Okafor (6-3, 275, Sr.)
	77	Josh Johnson (6-8, 290, Fr.)
WR	11	Zachary Sohn (5-10, 182, Sr.)
	18	Brad Sundstrom (6-5, 235, Sr.)
QB	7	Willie Tindal (5-10, 187, Jr.)
	14	Omar Kharroub (6-0, 190, Jr.)
RB	3	Robert McWright (6-0, 220, Jr.)
	2	ViaVia Manuma (5-11, 230, So.)
WR	1	Derwyn Lauderdale (5-11, 175, Jr.)
	6	Anthony Frazzell (6-0, 175, Jr.)
PK	39	Dylan Beers (6-1, 195, Jr.)
LS	91	David Layman (5-11, 225, So.)

SOUTHWEST BAPTIST DEFENSE

DE	46	Johnathon Drury (6-2, 235, Sr.)
	37	Caleb Scott (6-1, 220, Sr.)
DT	95	Antonio Gardner (6-3, 270, Sr.)
	54	Keiland Jones (6-0, 285, Fr.)
DT	60	Dontrell Woods (6-0, 297, Fr.)
	90	Phillip Garza (6-2, 300, Jr.)
DE	41	Victor Clavier (6-1, 250, Fr.)
	44	Nathaniel Belak (5-11, 220, Sr.)
LB	42	Zach Moore (5-10, 215, Sr.)
	27	Darryl Battles (5-10, 210, Fr.)
LB	9	Shaquille Shedd (6-4, 240, Sr.)
	57	Damontez Pendleton (6-1, 230, Jr.)
CB	25	Evan Ray (6-1, 200, Sr.)
	19	Quinton Doswell (6-1, 180, Fr.)
WS	8	Derrick Fofanah (5-11, 200, Jr.)
	26	Alex Bartlett (6-0, 200, Jr.)
FS	21	Ivan Hodges (5-10, 185, Sr.)
	29	Antion McBee (6-2, 205, Sr.)
SS	24	Karre' Wallace (5-10, 188, Sr.)
	28	Antwaun Lewis (5-10, 170, Fr.)
CB	20	George Sanders (5-9, 170, Fr-RS)
	22	Nick Burns (6-0, 183, So.)
P	13	Derek Koon (5-8, 180, Sr.)
PR	24	Karre' Wallace (5-10, 188, Sr.)
KR	16	Nyran Ross (5-10, 170, Sr.)

2013 PITT STATE FOOTBALL

PSU-SBU OFFENSIVE COMPARISON

Total Offense		Yards	Avg.
Pittsburg State (1)		1181	590.5
Southwest Baptist (6)		924	462.0
Rushing Offense		Yards	Avg.
Pittsburg State (1)		715	357.5
Southwest Baptist (8)		196	98.0
Passing Offense		Yards	Avg.
Southwest Baptist (1)		728	364.0
Pittsburg State (9)		466	233.0
Scoring Offense		Points	Avg.
Pittsburg State (2)		110	55.0
Southwest Baptist (8)		64	32.0
Passing Efficiency	C-A-TD-I	Yards	Rat.
Pittsburg State (2)	39-50-0	466	202.5
Southwest Baptist (5)	44-72-2	728	168.0
Kickoff Returns		No/Yards	Avg.
Pittsburg State (3)		6/147	24.5
Southwest Baptist (7)		11/228	20.7
Third Down Conversions		Tot	Pct.
Pittsburg State (2)		16/28	57.1
Southwest Baptist (6)		12/30	40.0
Time of Possession		Avg	
Pittsburg State (4)		33:17	
Southwest Baptist (5)		32:22	
Penalties		Tot/Yds	Avg
Pittsburg State (6)		9/100	50.0
Southwest Baptist (11)		18/147	73.5

PSU-SBU DEFENSIVE COMPARISON

Total Defense	Yards	Avg.	
Pittsburg State (3)	675	337.5	
Southwest Baptist (8)	803	401.5	
Rushing Defense	Yards	Avg.	
Pittsburg State (8)	354	177.0	
Southwest Baptist (9)	355	177.5	
Passing Defense	Yards	Avg.	
Pittsburg State (2)	321	160.5	
Southwest Baptist (7)	448	224.0	
Scoring Defense	Points	Avg.	
Pittsburg State (2)	30	15.0	
Southwest Baptist (11)	75	37.5	
Passing Eff. Defense	C-A-TD-I	Yards	Rat.
Pittsburg State (2)	26-52-1	321	104.4
Southwest Baptist (9)	32-53-3	448	138.7
Punt Returns	No/Yards	Avg.	
Pittsburg State (7)	4/24	6.0	
Southwest Baptist (14)	3/-1	-0.3	
Turnover Margin	Mar	Avg	
Pittsburg State (2)	+3	+1.5	
Southwest Baptist (9)	+0	+0.0	
Net Punting	Tot/Net	Avg	
Pittsburg State (2)	3/124	41.3	
Southwest Baptist (5)	7/259	36.9	

GROUND GAME PSU'S BREAD AND BUTTER...

Pitt State's success can be directly linked to its ability to rush the football.

Since the 1986 season, PSU has rushed for 200-plus yards in 279 of 331 overall games. The Gorillas have posted a **248-31-1 (.888)** record when they eclipse 200 yards rushing. Pitt State is an even more impressive **136-6-0 (.958)** when it eclipses 300 yards rushing.

By contrast, PSU is just 23-30-1 (.435) in the handful of games when it has been held below 200 yards rushing.

Since 1986, PSU has rushed the ball for the highest yardage total among all NCAA Division II programs, with **96,636 yards** (including postseason competition) for an average of **288.9** yards per game.

... BUT DON'T OVERLOOK PSU PASSING ATTACK

While it's no secret Pitt State's offensive success has been predicated on running the football, the Gorillas have unleashed a potent passing attack to compliment their stalwart running game.

Since the start of the 2004 season, the Gorillas have passed for **23,450 yards** and **176 TDs**, averaging 225.5 passing yards and 1.7 touchdown passes per game in the last 104 outings.

In 2012, quarterback Tony Abenoja established a new single-season passing record, averaging 233.0 passing yards per game. As a team, Pitt State passed for 2498 yards (249.8 ypg) and 15 touchdowns on the season a year ago.

The Gorillas have averaged 233.0 passing yards in their first two games with seven touchdowns and no interceptions.

PITT STATE DISPLAYS PROLIFIC OFFENSE

The Pitt State offense has asserted itself as one of the top units in NCAA Division II the past nine seasons (2004-12).

Pitt State's high octane "multiple choice" offense ranked either No. 1 or No. 2 nationally in both scoring and total offense in three of the last seven seasons.

In 2004, PSU staked its claim as the most prolific offense in the history of NCAA football, leading Division II in scoring (55.8 ppg), rushing (354.7 ypg) and total offense (598.4 ypg).

Pitt State broke the NCAA's 118-year-old all-time all division scoring record with 837 points, besting the old mark of 765 points set by Harvard in 1886. The Gorillas also broke the all-time NCAA all division records for rushing (5,320 yards) and total offense (8,976 yards) in 2004.

Oklahoma set the previous rushing record (5,196 yards) in 1971, and Texas Tech held the previous total offense mark (7,576 yards) in 2003.

In 2005, Pitt State ranked second nationally in scoring and total offense, averaging **46.8 points** and **536.0 total yards** per game. The Gorillas also ranked seventh nationally in rushing, averaging 295.2 yards a game.

In 2006, Pitt State led NCAA Division II in scoring and ranked No. 2 nationally in total offense, averaging 44.8 points and **454.8 total yards** per game in 2006.

In 2007, the Gorillas ranked 21st nationally in scoring and 19th nationally in total offense, averaging **37.4 points** and **454.2 total yards** per game. In 2008, Pitt State ranked 18th nationally in scoring (35.5 ppg) and 21st in the nation in total offense (432.6 ypg).

In 2009, the Pitt State offense averaged 29.4 points and 434.4 total yards per game, while the Gorillas averaged 22.8 points and 357.7 total yards per game in 2010.

In 2011, the Gorillas ranked sixth nationally in **scoring (40.2 ppg)** and 19th in the country in **total offense (448.5 ypg)**. Last year, the Gorillas ranked 24th nationally in total offense (454.4 ypg) and 27th in the country in rushing offense (204.6 ypg).

In 2012, the Gorillas ranked 24th nationally in total offense (454.4 ypg) and 27th in the country in rushing offense (204.6 ypg).

This year, Pittsburg State is currently ranked fourth nationally in **rushing (357.5 ypg)** and **scoring (55.0 ppg)** and sixth in the country in **total offense (590.5 ypg)**.

[game notes continued on page 39]

2013 PITT STATE FOOTBALL

SOUTHWEST BAPTIST ROSTER

NO	NAME	POS	HT	WT	CL	HOMETOWN
1	Derwyn Lauderdale	WR	5-10	175	Jr.	Houston, Texas
2	Via Via Manuma	RB	5-11	230	So.	Pago Pago, American Samoa
3	Robert McWright	RB	6-0	220	Jr.	Dallas, Texas
4	Nehemiah Gross	RB	5-10	190	Fr.	San Diego, Calif.
5	Kevin Paredes	WR	5-9	180	Fr-RS	Hawthorne, Calif.
6	Anthony Frezzell	WR	6-0	175	Jr.	Detroit, Mich.
7	Willie Tindal	QB	5-10	187	Jr.	Fl. Lauderdale, Fla.
8	Derrick Fofanah	NK	5-11	200	Jr.	Dallas, Texas
9	Shaquille Shedd	LB	6-2	240	Sr.	Cowan, Tenn.
10	Nathan Mourik	WR	6-2	175	Jr.	Pasadena, Texas
11	Zachary Sohn	WR	5-10	182	Sr.	Fredericktown, Mo.
12	MJ Swartwood	QB	5-11	205	So.	ML. Vernon, Mo.
13	Joey Dominguez	QB	6-3	210	Fr-RS	Lawton, Okla.
14	Omar Kharroub	QB	6-0	190	Jr.	San Francisco, Calif.
15	Tanner Ramsey	QB	6-2	230	Fr.	Mesquite, Texas
16	Nyran Ross	WR	5-10	170	Sr.	Marathon, Fla.
17	Brandon Jones	DB	6-1	181	Fr.	Houston, Texas
18	Brad Sundstrom	WR	6-5	235	Sr.	Dayton, Ohio
19	Quinton Boswell	DB	6-1	180	Fr.	San Bernardino, Calif.
20	George Sanders	DB	5-9	170	Fr-RS	Houston, Texas
21	Ivan Hodges	DB	5-10	185	Sr.	Dinuba, Calif.
22	Nick Burns	DB	6-1	183	So.	Houston, Texas
23	Chad Nolan	DB	6-0	200	Fr.	San Marcos, Calif.
24	Karre' Wallace	DB	5-10	188	Sr.	Houston, Texas
25	Evan Ray	DB	6-1	200	Sr.	Detroit, Mich.
26	Alex Bartlett	NK	6-0	200	Jr.	Harrisonville, Mo.
27	Barryl Battles	LB	5-10	210	Fr.	Mesquite, Texas
28	Antwaun Lewis	DB	5-10	170	Fr.	Albany, Ga.
29	Antion McBe	DB	6-2	205	So.	St. Louis, Mo.
30	Fernando Cedeno	PK	6-1	200	So.	Morelia, Mexico
31	Kashaun Hutchinson	NK	5-11	190	Fr.	Woodbine, Ga.
32	Buck Rodges	WR	5-11	180	Fr.	Mesquite, Texas
33	Keaton Patterson	NK	6-0	200	Jr.	Ozark, Mo.
34	Logan Robinson	DB	6-2	220	Fr.	La Quinta, Calif.
35	Marcus Strickland	RB	5-10	190	Fr-RS	Kansas City, Mo.
36	Chris Uzomah	NK	5-9	200	Fr-RS	Houston, Texas
37	Caleb Scott	DE	6-1	220	Sr.	Springfield, Mo.
38	Austin Molitor	PK	6-5	210	So.	Bentonville, Ark.
39	Jorge Batres	PK	5-11	205	Jr.	Dallas, Texas
40	Tamario Beaugard	RB	5-11	210	Fr-RS	Benton, Texas
41	Victor Clavier	DL	6-1	250	Fr.	Orlando, Fla.
42	Zach Moore	LB	5-10	215	Sr.	Chandler, Ariz.
43	Tim Manuma	LB	6-2	240	Sr.	Pago Pago, American Samoa
44	Nathaniel Belak	DE	5-11	220	Sr.	Gaithersburg, Md.
45	David Layman	LS	5-11	220	So.	Prairie Grove, Ark.
46	Johnathan Drury	DE	6-2	210	Sr.	Park Rapids, Minn.
47	Alex Hamilton	DE	6-2	214	Jr.	Vallejo, Calif.
48	Travis Gregory	DB	5-7	175	Jr.	Malden, Mo.
49	De'shawn Tone	DE	6-1	245	Fr.	El Cajon, Calif.
50	Jordan Fanger	LB	6-3	203	Fr.	Fenton, Mo.
51	Tyler Curtis	LB	6-2	215	Fr.	Bolivar, Mo.
52	Chuck Stevens	OL	6-5	310	Jr.	New Orleans, La.
53	Cody Cutting	OL	6-3	270	Jr.	Keller, Tex.
54	Keilan Jones	OL	6-0	285	Fr.	Mainland, Fla.

NO	NAME	POS	HT	WT	CL	HOMETOWN
55	Brock Baker	OL	6-1	270	Jr.	Willard, Mo.
56	Blake Poncio	LB	5-11	195	Jr.	Katy, Texas
57	Damonte Pendleton	LB	6-1	230	Jr.	Chicago, Ill.
58	Zach Reid	DL	6-0	300	Fr.	St. Louis, Mo.
60	Dontrell Woods	DL	6-0	297	Jr.	St. Louis, Mo.
61	Austin Conrad	OL	5-11	300	Fr-RS	Buffalo, Mo.
62	Sydney Wiggs	OL	6-4	280	Jr.	Conyers, Ga.
63	Derrick Okalor	OL	6-3	275	Sr.	Dallas, Texas
64	Zack Castillo	OL	6-1	235	Fr.	Jenks, Okla.
68	Mike McIntosh	DL	5-10	266	Fr.	Loveland, Colo.
69	Kantrell Boyson	DL	6-3	368	Fr-RS	Kenosha, Wis.
70	Dayne Bullock	OL	6-3	265	Fr.	Austin, Texas
71	Austin Fanger	DE	6-3	210	Fr.	Fenton, Mo.
72	Justin Cleeton	OL	6-5	250	Sr.	Fair Grove, Mo.
73	Jimmy Schmitzer	OL	6-1	310	So.	Cypress, Texas
74	Kaleb Gadson	OL	6-2	290	Fr.	Columbia, Mo.
76	Josiah Quick	OL	6-1	300	Fr.	Grandview, Mo.
77	Josh Johnson	OL	6-8	290	So.	Raymore, Mo.
78	Jacob Castillo	DL	6-0	230	Fr.	Jenks, Okla.
80	Ivan Lofton	WR	6-3	180	Fr.	Grandview, Mo.
81	John Tolliver	PK	6-4	220	Jr.	Harrison, Ark.
82	Imari Price	WR	5-9	166	Jr.	North Port, Fla.
84	Davante Golden	WR	6-0	180	Fr-RS	Houston, Texas
85	Jacoby Watson	WR	5-11	185	Fr-RS	Houston, Texas
86	Letreal Peterson	WR	5-10	165	Fr-RS	Arlington, Texas
87	Justin Caylor	WR	6-3	230	Fr-RS	Bentonville, Ark.
88	Scottie Wilson Jr.	WR	6-1	185	Fr.	Platte City, Mo.
89	Tanner Kelley	WR	5-9	160	So.	Urbana, Mo.
90	Phillip Garza	DL	6-2	300	Jr.	Houston, Texas
91	Calvin Lovig	PK	6-0	165	Fr.	Cape Girardeau, Mo.
92	Ricky Jansen	DE	6-2	220	So.	Elsberry, Mo.
93	Robert Jansen	DE	6-1	225	So.	Elsberry, Mo.
94	Aaron Cleeton	DL	6-7	200	Fr-RS	Fair Grove, Mo.
95	Antonio Gardner	DL	6-3	270	Jr.	Chicago, Ill.
96	Justin Dotson	DL	5-10	245	Fr-RS	San Antonio, Tex.
97	Zach Dangeau	DL	6-2	275	Jr.	Fayetteville, Ark.

COACHING STAFF: Craig Schuler, Head Coach; Phil Staback, Offensive Coordinator; Marcus Klund, Defensive Coordinator; Robert Clardy, Wide Receivers; Rickey Hunley Jr, Defensive Backs; Anthony Vitale, Offensive Line.

WACO SCHOOLHOUSE HAUNT

wacoschoolhousehaunt.com

OPEN FALL 2013

148 ROSE STREET WACO, MISSOURI

(just south of Asbury between Pittsburg and Joplin)



LIKE US ON FACEBOOK

Lucky BUT
lawncare inc.
620.249.3485

WE'VE GOT THIS IN-STOCK & READY TO SHIP



Parts & Accessories for Trucks & SUVs

1947-2013 **CHEVY/GMC**

| 1948-2013 **FORD**

| 1994-2012 **DODGE**

LMC
TRUCK
PARTS & ACCESSORIES

PARTS FOR
1972-93 DODGE TRUCKS
SPRING 2014



(800) 562-8782

www.LMCTRUCK.com

©2013 Long Motor Corp.

TEAM KONG

www.teamkong.com



Your online source for daily Gorilla content!

Coach & player podcasts by Tom Van Hoy

Stories posted immediately following the game

Game previews & unique PSU features

Podcasts, blogs and polls engaging all Gorilla fans

A proud partner of PSU Athletics!

2013 PITT STATE FOOTBALL



DREILING CLIMBS CAREER TACKLE CHART

Junior linebacker **Nate Dreiling** continues to climb both the Pitt State and MIAA career tackles charts. Dreiling (6-4, 228) has posted double-digit tackles in 24 of 38 career games for the Gorillas.

The Hutchinson/Victoria, Kan., native now has 401 (10.5 pg) career tackles. He needs 70 stops to become PSU's all-time tackles leader. Dreiling trails only former

All-American Chris Brown (470) on the career list.

Dreiling needs 16 tackles to break into the top 10 on the MIAA's all-time tackle chart. Truman's Marti Rave (1977-79) holds the conference career tackle mark with 489 stops.

PSU Career Tackles

- | | Total |
|-------------------------------------|------------|
| 1. Chris Brown, 1992-95 | 470 |
| 2. Nate Dreiling, 2011-pres. | 401 |

Total

MIAA Career Tackles

- | | Total |
|----------------------------------------------|------------|
| 1. Marti Rave, Truman, 1977-79 | 489 |
| 2. Zach Watkins, WU, 2006-09 | 473 |
| 3. Chris Brown, Pitt State, 1992-95 | 470 |
| Nate Dreiling, Pitt State, 2011-pres. | 401 |

Total

ABENOJA AMONG NATIONAL LEADERS

Junior quarterback **Tony Abenoja** moved into the top 10 list for career records for Pitt State quarterbacks during the past 29 seasons with Pitt State's 2-0 start to the season.

Abenoja improved to **9-3 (.750)** as the Gorillas starter.

Pitt State quarterbacks have combined to win 81.4 percent of their games since the start of the 1985 season, posting a combined **279-63-2** record.



Abenoja garnered MIAA Offensive Player of the Week honors for the second time in his career after his play in the season opener vs. NSU on Sept. 7.

For the season, he has completed 37 of 48 passes (.771) for 439 yards (219.5 ypg) and six touchdowns with no interceptions (195.2 passer rating). He also has rushed the ball 19 times for 141 yards (7.4 ypc) and two scores, averaging 290.0 yards of total offense per game. Abenoja currently ranks fifth in Division II in passing efficiency.

SCOUTING THE BEARCATS

SBU enters tonight's action averaging 462.0 yards of total offense, including 364.0 passing yards per game.

Junior quarterback **Willie Tindal** (5-10, 187) leads the MIAA averaging 350.5 ypg passing and 369.0 total yards per game. The Fort Lauderdale, Fla., native has tallied 701 yards on 43-of-69 (.623) passing with five touchdowns and two interceptions.

Junior wide receiver **Derwyn Lauderdale** (5-10, 175) has hauled in 19 receptions for 338 yards and three touchdowns. He currently ranks first in the MIAA in receptions and second in receiving yards per contest.

ViaVia Manuma (5-11, 230) and **Robert McWright** (6-0, 220) split carries in the Bearcat backfield. Manuma, a sophomore from American Samoa, tallied 70 yards on 15 carries after missing the team's first game.

Senior linebacker **Shaquille Shedd** (6-2, 240) leads the Bearcats on defense with 22 tackles (10 solo) on the season. Senior defensive back **Ivan Hodges** (5-10, 185) has recorded two interceptions to go along with 13 tackles (seven solo) to start the season.

New vendors!

Enjoy samples
from your
favorite
area
restaurants!

A new homecoming tradition!

TASTE

of Pittsburg

New beer &
wine tasting!

Plus,
live music
from
Area 51!

BAMBOO • BARTO'S IDLE HOUR • BIG BEN'S BBQ • CAFÉ DEL RIO • CHATTERS/HOUSE OF WINGS
JOSIE'S RISTORANTÉ • THE MALL DELI • PALLUCCA'S • SODEXO • SWEET DESIGNS CAKERY • PLUS MORE!

Friday, Oct. 4 • 6-8 p.m. • KTC Courtyard • \$20/person • RSVP by Sept. 25

620-235-4758

www.pittstate.edu/tasteofpittsburg

JOIN US FOR THESE ADDITIONAL HOMECOMING EVENTS:

Friday, Oct. 4 – Outstanding Alumni Award Reception, 4:30-6 p.m., Wilkinson Alumni Center
Saturday, Oct. 5 – Homecoming Parade, Campus Tours, GorillaFest, Chicken Wars Tailgate

BROADWAY *Electronics, Inc.*

SONY

make.believe



**Sales
Service
Installation**

**1010 South
Broadway
(620) 231-5780**

AN EXCLUSIVE TV EXPERIENCE
DESIGNED JUST FOR YOU

CONTOUR_{sm}

FROM **COX**

to learn more

Call 866-719-2452 | Click cox.com/contour | Come by your Cox Solutions Store

© 2013 Cox Communications, Inc.

2013 PITT STATE FOOTBALL



GAVIN RAINWATER
6-2 • 311 • SO • DL
Neosho, Mo.



DEAVEN JENSEN
6-1 • 237 • JR • DE
Lenexa, Kan.



JAKE TAYLOR
6-8 • 294 • SO • OL
Oologah, Okla.



BOSTON HIGGINS
6-3 • 269 • JR • OL
Blue Springs, Mo.



TANK BURNS
6-2 • 282 • JR • DL
Columbus, Kan.



CALE KARIGAN
6-5 • 268 • JR • OL
Paola, Kan.



JESSE INGLE
6-3 • 255 • JR • OL
Valley Center, Kan.



TAYLOR PEAK
6-2 • 267 • SR • OL
Girard, Kan.



OLLIE VENEGAS
6-3 • 300 • JR • OL
Olathe, Kan.



TRAVIS FUNK
6-3 • 305 • FR-BS • OL
Kearney, Mo.



CODY HOLLAND
6-6 • 334 • SR • OL
Neosho, Mo.



BO WEBER
6-4 • 273 • FR-BS • OL
Bentonville, Ark.



TYLER SMITH
6-4 • 291 • JR • OL
Sand Springs, Okla.



AUSTIN DANIEL
6-2 • 201 • SO • WR
Webb City, Mo.



LUKE RUMPY
5-9 • 170 • JR • WR
Overland Park, Kan.

2013 PITT STATE FOOTBALL



BRADY LETCHWORTH
6-3 • 220 • JR • TE
Blue Springs, Mo.



ZACH BESSETTE
6-3 • 235 • JR • TE
Ulysses, Kan.



BRADLEY ARGABRIGHT
6-1 • 182 • JR • WR
Olpe, Kan.



CONNER COMBES
6-5 • 250 • SR • TE
Overland Park, Kan.



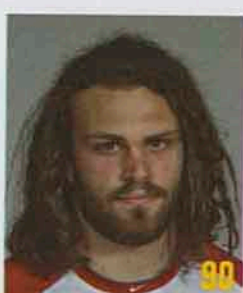
TREY MYERS
6-4 • 226 • SO • TE
Kansas City, Mo.



KYLE SWARTZ
6-3 • 226 • FR-BS • TE
Olathe, Kan.



TREY DERRYBERRY
5-11 • 176 • SR • WR
Carthage, Mo.



JOE UZZEL
6-4 • 233 • SR • DL
Catoosa, Okla.



JUSTIN STRONG
6-1 • 242 • SO • DL
Harrisonville, Mo.



MONTRAE STRICKLAND
6-4 • 225 • SO • DL
Lee's Summit, Mo.



MATT ANDERSON
6-2 • 318 • JR • DL
Sand Springs, Okla.



WILL GRISSOM
6-5 • 269 • SR • DL
Orange, N.J.



DALLAS SHALZ
6-2 • 228 • JR • DL
Kansas City, Kan.



AVERY ADAIR
6-5 • 228 • JR • DE
Raytown, Mo.



DARIAN HOLMES
6-2 • 275 • FR-BS • DL
Kansas City, Mo.



TAYE IRVIN
6-1 • 327 • SO • DL
LaGrange, Ga.



KYLE ANDERSON
6-4 • 230 • FR-BS • TE
Rose Hill, Kan.



MITCHELL ARGABRIGHT
5-11 • 150 • FR • S
Olpe, Kan.



COLIN AUBUCHON
6-3 • 255 • FR • TE
Lee's Summit, Mo.



DANIEL AUGUST
6-4 • 270 • FR • DL
Broken Arrow, Okla.

Proud supporters of GORILLA FOOTBALL!

PSU GRAD

OUR TENTH YEAR
2003
FOX 14
K F J X T V
2013
IN THE FOUR STATES

Dan Hawk & Jake Faber

www.fox14tv.com

2013 PITT STATE FOOTBALL



DEREK BECK
5-10 • 150 • FR-RS • WR
Pittsburg, Kan.



DEMETRIUS BERNARD
5-11 • 225 • FR • LB
O'Fallon, Mo.



SPENCER BERNHARDT
6-2 • 180 • FR • WR
Pittsburg, Kan.



BRADY BRADBURY
5-9 • 170 • FR • S
Adair, Okla.



ANDREW BRESTEL
6-3 • 285 • FR • DL
Muskogee, Okla.



ANTOINE BROWN
6-3 • 220 • FR • DE
Tulsa, Okla.



DAVID CARDINAL, JR.
5-8 • 205 • FR • RB
Hays, Kan.



CODY CARLSON
5-8 • 181 • FR-RS • LB
Derby, Kan.



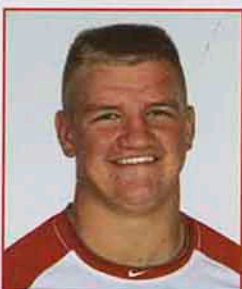
CHASE CARNEY
6-5 • 260 • FR • OL
Fayetteville, Ark.



RYAN CIPRIANI
6-4 • 255 • FR • DL
Overland Park, Kan.



DERRICK DECKER
6-5 • 215 • FR-RS • TE
Rose Hill, Kan.



BO FARROW
6-2 • 250 • FR • OL
Broken Arrow, Okla.



TODD FREEMAN
5-11 • 173 • FR-RS • QB
Wichita, Kan.



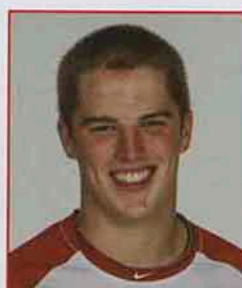
DREW GILL
6-0 • 183 • FR-RS • LB
Pittsburg, Kan.



MATT HERMANN
6-2 • 220 • FR-RS • TE
Broken Arrow, Okla.



THOMAS LEPAGE
6-3 • 180 • FR • QB
Jefferson City, Mo.



CARSON LETCHWORTH
6-3 • 230 • FR • TE
Blue Springs, Mo.



AREN MARTIN
6-1 • 190 • FR • WR
Lebanon, Mo.



RYAN MCNERLIN
5-9 • 185 • FR • WR
Stillwell, Kan.



JARED MURPHY
6-2 • 250 • FR • DL
Prairie Grove, Ark.



Amazing events, full-service
for any budget, anytime,
to any location in our
community.



Gluten Free & Allergen-Free
Menus are Available

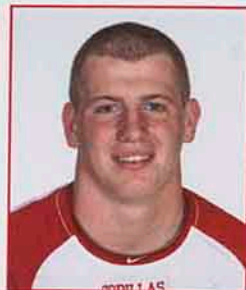


*Banquets
Meetings
Weddings
Outdoor
Indoor*

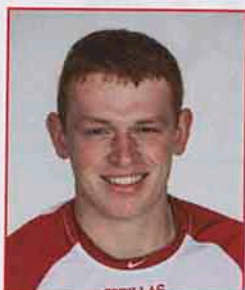
620-235-4995
catering@pittstate.edu
www.pittstatecatering.catertrax.com



2013 PITT STATE FOOTBALL



ALEX NORRIS
6-2 • 210 • FR • S
Overland Park, Kan.



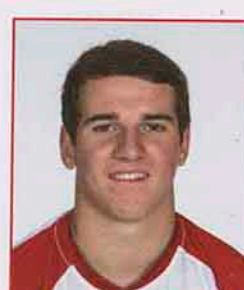
ANDY OTTING
6-3 • 230 • FR • TE
Topeka, Kan.



JACOB RALPH
6-5 • 280 • FR • OL
Bentonville, Ark.



DEXTON ROBERTSON
6-4 • 300 • FR • OL
Cashion, Okla.



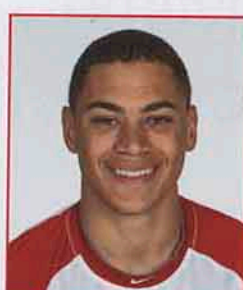
MICHAEL ROSE
5-10 • 170 • FR • RB
Albuquerque, N.M.



BEN SAINT
6-2 • 320 • FR • OL
O'Fallon, Mo.



SAVOY SANTIAGO
6-0 • 198 • FR-RS • S
Bentonville, Ark.



KELLEN SIMS
5-11 • 180 • FR • WR
Wichita, Kan.



NICK SIMS
5-9 • 172 • FR-RS • CB
Wichita, Kan.



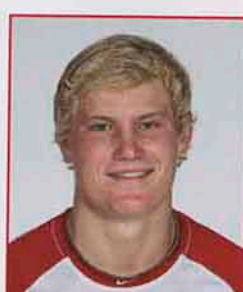
JOSÉ SPEER
6-4 • 220 • FR • DE
Webb City, Mo.



ETHAN SPORE
6-0 • 190 • FR • S
Oswego, Kan.



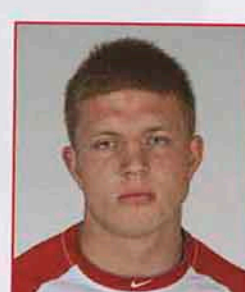
STEYR STUBENRAUCH
6-0 • 200 • FR-RS • LS
Bonner Springs, Kan.



CHRIS THOMPSON
6-3 • 210 • FR • WR
Albuquerque, N.M.



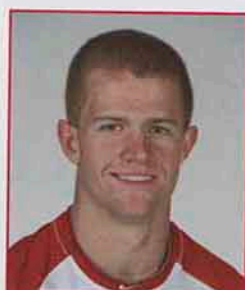
JAXON UHLES
6-0 • 235 • FR • LB
Norman, Okla.



AUSTIN VANDERPOOL
5-11 • 203 • FR-RS • LB
Shawnee, Kan.



DREU WHITE
6-6 • 239 • FR-RS • TE
Kansas City, Kan.



JORDAN WIEDEMANN
6-2 • 191 • FR-RS • S
Maize, Kan.



KELLY WORTHAM
6-3 • 270 • FR • OL
Yukon, Okla.



JAXON WRIGHT
6-0 • 172 • FR • DB
Holton, Kan.



DEONTRE YOUNGBLOOD
6-0 • 180 • FR • DB
Tulsa, Okla.

Ditt

DISCOUNT LIQUOR

1001 South Broadway • 231-2626

OPEN AT 9 A.M. ON PSU GAMEDAYS



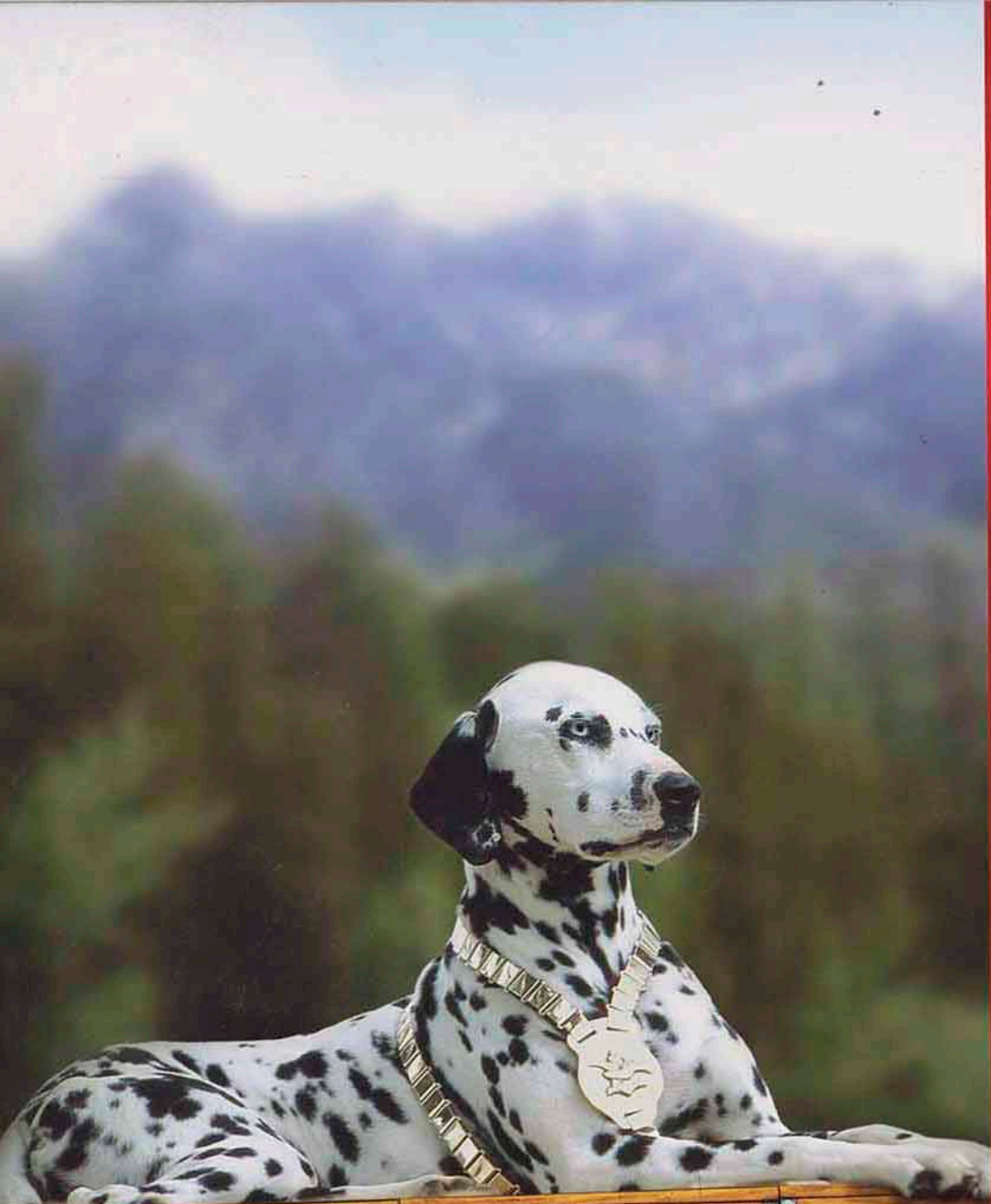
**TAILGATE
RESPONSIBLY**

Preferred Stop for Responsible Gorilla Tailgaters

One of the largest selections of beer, liquor and wine in town

Wine Wednesday - 10% off all wine

WE ID - MUST BE 21



Budweiser

**Your Commitment
is Spot On**

*We at Eagle Beverage,
proud distributor of
Budweiser, appreciate your
commitment to enjoying
our products responsibly.*

*We proudly support
Pittsburg State University.*



Welcome to Pittsburg State University

Family Day 2013

Every year Pittsburg State University honors students for their academic and co-curricular achievements. It is also important for us to recognize the families and friends whose love and support are integral elements in a student's success. Today we honor the families of all PSU students for their support and encouragement.

The Honorary Family Award is a program sponsored by the Pittsburg State University Foundation and the Advancement Ambassadors. PSU students were given the opportunity to nominate their family for this prestigious award by providing a written response to a series of questions. A committee of alumni, students, and staff reviewed each application and ranked each nominee. Our congratulations to all the families that were nominated!

Pittsburg State University is pleased to announce:

The 2013 Honorary Family Michael & Jill Chaloupka Liberty, MO

Mr. and Mrs. Chaloupka were nominated by their daughter, Abbey, a sophomore Graphic Communication major:

In her nomination, Abbey wrote:

"Since the moment I was born, my family has been my rock and my foundation. I know that I can rely on them and trust in them to support me in all that I do. My family always encouraged me to dream big and live up to my full potential. My parents have spent their lives raising my brother and I to be the best that we can be, by instilling values of respect, honesty, loyalty, generosity, and love into our lives. And just like my parents make everyone feel at home, so does Pittsburg State University."

Congratulations Michael & Jill Chaloupka!

Go Gorillas!

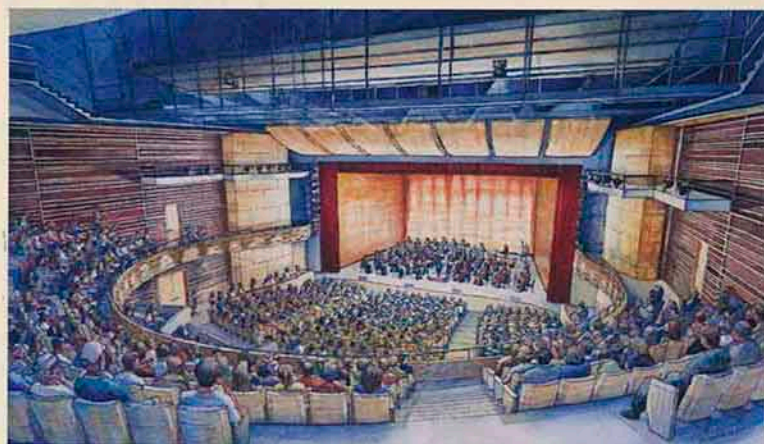


Pittsburg State University Center for the Arts



**Honor a loved one.
Show your support
of the arts.**

Seat plaques in the large performance hall are still available for gifts of \$500 and \$1,000. All gifts will support completion of the facility.



For additional information, visit:
pittstate.edu/centerforarts

To make a gift, visit:
pittstate.edu/givenow

Office of University Development
phone: 620-235-4768
email: devel@pittstate.edu



**John and Jane
Doe**

In Memory of
Jane Doe
The Jane Doe Family

Sample seat plaques

*Congratulate
Julie West*

Nevada Middle School

Pitsco Educator of the Game

- Eighth grade practical technology education instructor
- Entering her 23rd year in education
- Sponsors Nevada Middle School Renaissance/Student Council, a program that has received Missouri state awards
- Serves on the MAP Steering, Teacher Evaluation, Instructional Practices Inventory, and Data committees
- Member of Bethel Missionary Baptist Church
- Served as the Cystic Fibrosis Fundraiser Chairperson, Penny Wars student scholarship chairperson, Ambulance Barn Toy Drive volunteer and food drive volunteer
- Received her bachelor's degree from Missouri State in 1991 and her master's degree from Pittsburg State in 1997
- Goes the extra mile for all students, including providing extra tutoring both before and after school

For winning today's award, Mrs. West will receive a recognition plaque during pregame activities on the field. In addition, Pitsco will donate \$500 to Nevada Middle School in honor of Mrs. West.

To nominate a teacher or administrator for the Pitsco Educator of the Game, go to www.PittStateGorillas.com.





Mariner Wealth Advisors

Plan your arrival



At Mariner Wealth Advisors, we work as a team to help clients and their families achieve and maintain financial peace of mind – preserving the wealth they have created and building a legacy for future generations of family and business leaders. Nationally ranked by Barron's, we're here to help you achieve your goals.*

2012

- #1 Top Financial Advisor in the state of Kansas
- #4 Top 100 Financial Advisors
- #7 Top 100 Independent Wealth Advisors

2011

- #1 Top Financial Advisor in the state of Kansas
- #6 Top 100 Independent Wealth Advisors
- #17 Top 100 Financial Advisors



Darrell Markley

Senior Wealth Advisor
Pittsburg Office
620 240-1872

darrell.markley@marinerwealthadvisors.com



Kyndra Burgess

Wealth Advisor
Pittsburg Office
620 240-1870

kyndra.burgess@marinerwealthadvisors.com



Lindsay Halsey

Client Service Associate
Pittsburg Office
620 240-1809

lyndsay.halsey@marinerwealthadvisors.com

* Barron's ranked Marty Bicknell and the teams at Mariner the number four financial advisor and number seven independent wealth advisor nationally in 2012. Barron's also ranked Bicknell the #1 advisor in the state of Kansas for 2009, 2010, 2011 and 2012. The Barron's recognitions are based upon information compiled using data for Mariner Holdings, a global financial services firm that owns and manages both Mariner Wealth Advisors and its affiliate, Montage Investments, an independent asset management firm.

2013 PITT STATE FOOTBALL

CAREER YARDS

Player	Comp.-Att.	Yards
1. Neal Philpot, 2001-04	326-678	5831
2. Andy Majors, 2002-05	352-597	5531
3. Mark Smith, 2005-08	337-521	5190
4. Mark Hittner, 1976-79	325-741	4830
5. Zack Siegrist, 1994-98	265-325	4174

SINGLE SEASON YARDS

Player	Comp.-Att.	Yards
1. Andy Majors, 2005	198-346	3065
2. Mark Smith, 2008	161-253	2348
3. Anthony Abenoja, 2012	169-280	2330
4. Zac Dickey, 2011	149-248	2290
5. Neal Philpot, 2004	96-170	1825

SINGLE GAME YARDS

Player	Comp.-Att.	Yds
1. 378 Anthony Abenoja vs. Northeastern State, Aug. 30, 2012	26-36	3
2. 358 Andy Majors vs. Southwest Baptist, Oct. 15, 2005	20-28	2
3. 336 Anthony Abenoja vs. Central Missouri, Oct. 6, 2012	23-38	2
4. 334 Andy Majors vs. Delta State, Aug. 27, 2005	23-49	2
5. 324 Mark Smith vs. Emporia State, Nov. 10, 2007	19-24	5

MOST TOUCHDOWNS

Game: 4	five times, most recently: John McCoy, vs. Emporia State, Oct. 17, 2009
Season: 25	Neal Philpot, 2004
Career: 61	Neal Philpot, 2001-04

CAREER TOUCHDOWNS

Player	Tds
1. Neal Philpot, 2001-04	61
2. Andy Majors, 2002-05	43
3. Jay Padden, 1987-90	40
3. Zack Siegrist, 1994-98	40
3. Mark Smith, 2005-08	40

SINGLE SEASON TOUCHDOWNS

Player	Tds
1. Neal Philpot, 2004	25
2. Andy Majors, 2005	20
3. Jay Padden, 1990	19
3. Andy Majors, 2004	19
5. Mark Smith, 2008	18

MOST ATTEMPTS

Game: 49	Andy Majors, vs. Delta State, Aug. 27, 2005
Season: 346	Andy Majors, 2005
Career: 741	Mark Hittner, 1976-79

CAREER ATTEMPTS

Player	Att.
1. Mark Hittner, 1976-79	741
2. Neal Philpot, 2001-04	678
3. Andy Majors, 2002-05	597
4. Zack Siegrist, 1994-98	525
5. Mark Smith, 2005-08	521

SINGLE SEASON ATTEMPTS

Player	Att.
1. Andy Majors, 2005	346
2. Anthony Abenoja, 2012	280
3. Mark Smith, 2008	253
4. Zac Dickey, 2011	248
5. Mark Hittner, 1977	218

MOST COMPLETIONS

Game: 26	Anthony Abenoja vs. Northeastern State, Aug. 30, 2012
Season: 198	Andy Majors, 2005
Career: 352	Andy Majors, 2002-05

CAREER COMPLETIONS

Player	Comp.
1. Andy Majors, 2002-05	352
2. Mark Smith, 2005-08	337
3. Neal Philpot, 2001-04	326
4. Mark Hittner, 1976-79	325
5. Zack Siegrist, 1994-98	265

SINGLE SEASON COMPLETIONS

Player	Comp.
1. Andy Majors, 2005	198
2. Anthony Abenoja, 2012	169
3. Mark Smith, 2008	161
4. Zac Dickey, 2011	149
5. Andy Majors, 2004	113

HIGHEST COMPLETION PCT.

Season: .681	Andy Majors, 2004 (113-166)
Career: .647	Mark Smith, 2005-08 (337-521)

CAREER COMPLETION PERCENTAGE (MIN. 250 ATT.)

Player	Comp.-Att.	Pct.
1. Mark Smith, 2005-2008	337-521	.6468
2. Anthony Abenoja, 2011-pres.	184-309	.5955
3. Andy Majors, 2002-05	352-597	.5896
4. Zac Dickey, 2010-11	240-436	.5505
5. Jay Padden, 1987-90	233-440	.5295

SINGLE SEASON COMPLETION PERCENTAGE (MIN. 100 ATT.)

Player	Comp.-Att.	Pct.
1. Andy Majors, 2004	113-166	.6807
2. Geno Waters, 2006	86-129	.6667
3. Mark Smith, 2008	161-253	.6363
4. Mark Smith, 2007	111-176	.6306
5. Anthony Abenoja, 2012	169-280	.6035

HIGHEST AVG./COMPLETION

Season: 21.5	Lateef Walker, 1999 (36-774)
Career: 19.0	Lateef Walker, 1998-2001 (70-1329)

TOTAL OFFENSE

MOST TOTAL YARDS

Game: 430	Andy Majors, vs. SBU, Oct. 15, 2005
Season: 4028	Andy Majors, 2005
Career: 10168	Neal Philpot, 2001-04

CAREER MOST TOTAL YARDS

Player	Pass	Rush	Total
1. Neal Philpot, 2001-04	5831	4337	10168
2. Andy Majors, 2002-05	5531	2336	7867
3. Mark Smith, 2005-08	5190	2367	7554
4. Germaine Race, 2003-06	0	6985	6985
5. Ronald Moore, 1989-92	0	5776	5776

SINGLE SEASON MOST TOTAL YARDS

Player	Pass	Rush	Total
1. Andy Majors, 2005	963	3065	4028
2. Zac Dickey, 2011	2290	1165	3455
3. Mark Smith, 2008	2348	968	3316
4. Neal Philpot, 2004	1825	1398	3223
5. Neal Philpot, 2003	1663	1144	2807

SINGLE GAME MOST TOTAL YARDS

Yds	Player	Rush	Pass
1. 430	Andy Majors vs. Southwest Baptist, Oct. 15, 2005	72	358
2. 413	Zac Dickey vs. Northwest Missouri, Dec. 3, 2011*	147	266
3. 401	Neal Philpot vs. Emporia State, Oct. 9, 2004	172	229
4. 393	Andy Majors vs. Delta State, Aug. 27, 2005	59	334
5. 379	Ronald Moore vs. Portland State, Dec. 5, 1992	379	0
5. 379	Anthony Abenoja vs. Northeastern State, Aug. 30, 2012	1	378

MOST TOTAL OFFENSIVE PLAYS

Season: 539	Andy Majors, 2005
Career: 1505	Neal Philpot, 2001-04

HIGHEST AVG./GAME

Season: 287.7	Andy Majors, 2005 (4028 yards in 14 games)
Career: 216.3	Neal Philpot, 2001-04 (10168 yards in 47 games)

RECEIVING

MOST YARDS GAINED

Game: 238	Kendall Fisher, vs. Emporia State, Oct. 17, 2009
Season: 1495	Ronnie West, 1991
Career: 2521	Ronnie West, 1990-91

CAREER YARDS

Player	Rec.	Yards
1. Ronnie West, 1990-91	123	2521
2. John Brown, 2011-pres.	124	2189
3. Gene Wayenberg, Jr., 1980-81	75	1827
4. Jermaine Carpenter, 2003-04	69	1671
5. Marques Nelson, 2005-08	82	1582

SINGLE SEASON YARDS

Player	Rec.	Yards
1. Ronnie West, 1991	74	1495
2. John Brown, 2011	61	1216
3. Gene Wayenberg, Jr., 1981	48	1124
4. Jermaine Carpenter, 2004	49	1115
5. Ronnie West, 1990	49	1026

Barto's Idle Hour

Frontenac, KS
(620) 232-9813 | (620) 232-9834

Chicken • Steaks
Polka Dancing Friday/Saturday
Open 4 p.m. Tuesday - Saturday

WINE • SPIRITS • IMPORT BEERS • KEGS

Centennial Retail Liquor

Party Shop Featuring Pop, Ice & Mixes

2308 S. Rouse
Pittsburg, Ks 66762

620-232-3700

Owners • Gay & Kent Grisham

Now Open
Sundays
12 - 8 p.m.

Now Open
Sundays
12 - 8 p.m.



Crawford County

cornered



If you're looking for an affordable, relaxing weekend getaway, a family day trip, a week of outdoor recreation or great sports, you'll find it in Crawford County, Kansas. Crawford County is the ideal destination featuring a unique blend of history, heritage, art, culture, food and activities for all ages! Crawford County, Kansas *"We Have Your Next Getaway Cornered!"*

Visit CrawfordCounty.com

More than 1,000 Employees

crawford
COUNTY
Convention & Visitors Bureau

CAMPUS BOOKSTORE

(620) 231-6747

Across From Campus
#1 Textbook Rentals

**Good Luck
Gorillas!!**

**Pitt State Gameday
Apparel Sold Here**



NPB Companies, Inc.
Event Staff & Security Services

[913] 281-2887

contact@npbcompanies.com

2013 PITT STATE FOOTBALL

PSU INDIVIDUAL RECORDS

Starting in 2002, the NCAA adjusted its statistics policy to allow for a continuous season in football. Prior to 2001, regular season and post season statistics were kept independently of one another. PSU has modified its all-time records — combining regular season and post season play — to reflect the NCAA's change.

RUSHING

MOST YARDS GAINED

Game: 379	Ronald Moore, vs. Portland St., Dec. 5, 1992
Season: 2575	Ronald Moore, 1992
Career: 7062	Germaine Race, 2003-06

CAREER YARDS

Player	Att.	Yards
1. Germaine Race, 2003-06 †	941	6985
2. Ronald Moore, 1989-92	869	5776
3. Darren Dawson, 1989-91	667	4565
4. Neal Philpot, 2001-04	827	4337
5. Richard Overton, 1977-80	825	4004
6. Monte Weathers, 1984-87	438	3852
7. Caleb Farabi, 2005-2008	597	3292
8. Anthony Chatmon, 1998-2001	429	3149
9. Bruce Stancell, 1983-86	571	2887
10. Joey Tobin, 1989-93	404	2651

† NCAA-II Record (formerly)

SINGLE SEASON YARDS

Player	Att.	Yards
1. Ronald Moore, 1992	356	2585
2. Germaine Race, 2004	247	2213
3. Germaine Race, 2006	310	1944
4. Germaine Race, 2005	239	1846
5. Darren Dawson, 1991	282	1698
6. Monte Weathers, 1987	191	1684
7. Ronald Moore, 1991	264	1576
8. Steve Howard, 1970	272	1568
9. Mike Meek, 1988	239	1530
10. Darren Dawson, 1989	189	1452

SINGLE GAME YARDS

Yds.	Player	Att.	Tds
1. 379	Ronald Moore vs. Portland State, Dec. 5, 1992	37	5
2. 309	Germaine Race vs. Central Missouri, Nov. 11, 2006	49	4
3. 305	Germaine Race vs. Truman, Oct. 22, 2005	23	3
4. 273	Justin Johnson vs. Missouri Southern, Sept. 27, 1997	16	5
5. 268	Germaine Race vs. Fort Hays State, Oct. 14, 2006	27	4
6. 265	Willie Brown vs. Emporia State, Nov. 10, 1984	33	2
7. 257	Richard Overton vs. Missouri Western, Nov. 1, 1980	26	2
8. 256	Ronald Moore vs. Missouri Southern, Oct. 24, 1992	23	3
9. 247	Monte Weathers vs. Emporia State, Nov. 7, 1987	16	2
10. 245	Germaine Race vs. Southwest Baptist, Oct. 21, 2006	21	3

MOST YARDS GAINED/QUARTERBACK

Game: 212	Mark Smith, vs. UNO, Nov. 15, 2008 *
Season: 1398	Neal Philpot, 2004
Career: 4337	Neal Philpot, 2001-04

CAREER YARDS

Player	Att.	Yards
1. Neal Philpot, 2001-04	827	4337
2. Mark Smith, 2005-2008	436	2364
3. Andy Majors, 2002-05	393	2336
4. Jeff Moreland, 1991-95	564	2075
5. Zac Dickey, 2010-11	354	2066

SINGLE SEASON YARDS

Player	Att.	Yards
1. Neal Philpot, 2004	196	1398
2. Zac Dickey, 2011	210	1165
3. Neal Philpot, 2003	222	1144
4. Neal Philpot, 2001	235	1103
5. Lateef Walker, 1999	223	1101

SINGLE GAME YARDS

Yds.	Player	Att.	Tds
1. 212	Mark Smith vs. Nebraska-Omaha, Nov. 15, 2008 *	20	1
2. 209	Neal Philpot vs. Northwest Missouri, Oct. 13, 2001	23	1
3. 198	Neal Philpot vs. Washburn, Oct. 11, 2003	23	2
4. 195	Lateef Walker vs. North Alabama, Sept. 4, 1999	20	2
5. 172	Neal Philpot vs. Emporia State, Oct. 9, 2004	20	4
6. 167	Neal Philpot vs. Southwest Baptist, Nov. 9, 2002	24	2
7. 166	Neal Philpot vs. Washburn, Oct. 2, 2004	14	1
8. 159	Gene Stegeman vs. Missouri S&T, Sept. 20, 1986	23	1
9. 153	Neal Philpot vs. Truman, Oct. 27, 2001	30	2
10. 147	Zac Dickey vs. Northwest Missouri, Dec. 3, 2011 *	20	0

MOST TOUCHDOWNS

Game: 5	Six times, most recently by: Germaine Race, vs. SBU, Oct. 15, 2005
Season: 39	Ronald Moore, 1992
Career: 107	Germaine Race, 2003-06

CAREER TOUCHDOWNS

Player	Tds
1. Germaine Race, 2003-06 †	107
2. Ronald Moore, 1989-92	74
3. Darren Dawson, 1989-91	61
4. Neal Philpot, 2001-04	60
5. Richard Overton, 1977-80	50
6. Anthony Chatmon, 1998-2001	46
7. Monte Weathers, 1984-87	44
8. Caleb Farabi, 2005-2008	43
9. Gene Stegeman, 1984-87	42
10. Andy Majors, 2002-05	34
11. Mark Smith, 2005-2008	29

(records prior to 1968 incomplete)

† NCAA all division record (former)

SINGLE SEASON TOUCHDOWNS

Player	Tds
1. Ronald Moore, 1992	39
2. Germaine Race, 2005	33
3. Germaine Race, 2006	31
4. Germaine Race, 2004	26
5. Darren Dawson, 1991	22
6. Richard Overton, 1979	21
7. Darren Dawson, 1989	21
8. Monte Weathers, 1987	20
9. Ronald Moore, 1991	20
10. Caleb Farabi, 2007	20

(records prior to 1968 incomplete)

MOST ATTEMPTS

Game: 49	Germaine Race, vs. Central Missouri, Nov. 11, 2006
Season: 356	Ronald Moore, 1992
Career: 941	Germaine Race, 2003-06

CAREER ATTEMPTS

Player	Att.
1. Germaine Race, 2003-06	941
2. Ronald Moore, 1989-92	869
3. Neal Philpot, 2001-04	827
4. Richard Overton, 1977-80	825
5. Darren Dawson, 1989-91	667
6. Caleb Farabi, 2005-2008	597
7. Bruce Stancell, 1983-86	571
8. Jeff Moreland, 1991-95	564
9. Bob Howard, 1967-69	538
10. Gene Stegeman, 1984-87	519

HIGHEST AVG./CARRY

Season: 8.96	Germaine Race, 2004 (247 carries, 2213 yards)
Career: 8.79	Monte Weathers, 1984-87 (438 carries, 3852 yards)

CAREER HIGHEST AVG./CARRY (MIN. 100 ATT.)

Player	Att.	Yds	Avg.
1. Monte Weathers, 1984-87	438	3852	8.79
2. Kenny Vernon, 1987-88	140	1182	8.44
3. Anthony Chatmon, 1998-2001	429	3189	7.43
4. Germaine Race, 2003-06	941	6985	7.42
5. Sean Scott, 1992-94	110	792	7.20

SINGLE SEASON HIGHEST AVG./CARRY (MIN. 50 ATT.)

Player	Att.	Yds	Avg.
1. Germaine Race, 2004	247	2213	8.96
2. Monte Weathers, 1987	191	1684	8.82
3. Anthony Chatmon, 2001	61	529	8.67
4. Monte Weathers, 1986	173	1430	8.27
5. Germaine Race, 2005	239	1846	7.72

HIGHEST AVG./GAME

Season: 172.3	Ronald Moore, 1992
Career: 134.3	Germaine Race, 2003-06

CAREER HIGHEST AVG./G

Player	G	Yds	Avg.
1. Germaine Race, 2003-06	52	6985	134.3
2. Steve Howard, 1970-71	21	2352	112.0
3. Darren Dawson, 1989-91	41	4565	111.3
4. Ronald Moore, 1989-92	54	5776	107.0
5. Rex Garner, 1975-76	19	1786	94.0
6. Richard Overton, 1977-80	43	4004	93.1
7. Neal Philpot, 2001-04	47	4337	92.3
8. Willie Brown, 1981-84	23	2047	89.0
9. Monte Weathers, 1984-87	43	3811	88.6
10. Bob Howard, 1967-69	29	2319	80.0

SINGLE SEASON HIGHEST AVG./G

Player	G	Yds	Avg.
1. Ronald Moore, 1992	15	2585	172.3
2. Germaine Race, 2006	12	1944	162.0
3. Germaine Race, 2004	15	2213	147.5
4. Steve Howard, 1970	11	1568	142.5
5. Germaine Race, 2005	13	1846	142.0
6. Monte Weathers, 1987	12	1684	140.3
7. Willie Brown, 1984	9	1183	131.4
8. Mike Meek, 1988	12	1530	127.5
9. Caleb Farabi, 2007	11	1370	124.5
10. Monte Weathers, 1986	12	1430	119.2

MOST 100-YARD GAMES

Season: 14	Ronald Moore, 1992 (15 games)
Career: 36	Germaine Race, 2003-06 (52 games)

PASSING

MOST YARDS GAINED

Game: 378	Anthony Abenoja, vs. NSU, Aug. 30, 2012
Season: 3065	Andy Majors, 2005
Career: 5831	Neal Philpot, 2001-04

**American
Concrete**
Company, Inc.



AND
Pittsburg State University
Building a Solid
Foundation for the
Community



Dennis, Jane & Justin Crain
Owners

Celebrating 42 years and 3 generations

504 N Smelter • 620-231-1520 • www.americanconcreteco.net



EXCHANGE
State Bank
Member FDIC

108 E St. John
Girard, KS 66743

(620) 724-4911

**GO
GORILLAS!!**

**GO
PITT STATE**



Meadowbrook Mall

JCPenney 231-2300
Goody's 235-0147
Pittsburg 8 Theater 232-2256
Theater Arcade 232-2256
Maurices 231-1940
The Buckle 231-0210
The Mail Deli 231-7590
Cafe Del Rio 232-5895
Hibbett Sports 232-6760
Crowell Hallmark 231-3330
Bath & Body Works 232-6589
The Pretzel Place 240-0190
GNC 231-1008
Regis Hairstylist 231-0100
Claire's Accessories 231-1522
Fashion Nails 231-9141
KS Drivers License 231-0711
University Bank ATM 231-4200
Game Recycle 308-6855
Alpha Wireless 687-0116

Meadowbrook Commons

Comeau Jewelry 231-2530
Sally Beauty Supply 235-0417
OneMain Financial 235-0425
SEK Urgent Care 231-8003
U.S. Recruiting 231-3600
Hospices Compassus 232-9898
Advance America 231-4477
Mag-Lab 232-1900
Via Christi Home Med 235-0327
Via Christi Behav Hlth 231-1068
Sassypantz Boutique 231-3900

Meadowbrook Annex

U.S. Cellular 231-2444
Edward Jones 231-8804
Herron Regional Dental Center 231-8400

Westco HOME FURNISHINGS 231-895

www.meadowbrookcomplex.com

Mall Management

620-231-9240
620-231-9259 FAX
meadowbrook@sunnetworks.net

MEADOWBROOK
SHOPPING COMPLEX

THERE'S ALWAYS SOMETHING HAPPENING AT...

202 East Centennial • Pittsburg, Kansas 66762
620-231-9240

Follow us on Twitter at twitter.com/PittsburgMall



malibu tanning salon

Call and schedule an
appointment today!

(620)232-8266

124 N. Broadway
Pittsburg, KS 66762

VERSAPRO
HEATED SUNLESS SPA SERIES™

Now offering UV
free
tanning with our
VersaPro
Sunless Spray
Tan System



2013 PITT STATE FOOTBALL

SINGLE GAME YARDS

Yds.	Player	Rec.	TDs
1. 238	Kendall Fisher vs. Emporia State, Oct. 17, 2009	6	3
2. 215	Gene Wayenberg, Jr. vs. Missouri Western, Nov. 1, 1980	8	1
3. 195	Jermaine Carpenter vs. Emporia State, Oct. 9, 2004	4	2
4. 190	Ronnie West vs. Emporia State, Nov. 2, 1991	8	2
5. 189	Ronnie West vs. North Dakota State, Dec. 1, 1990	8	2

MOST TOUCHDOWNS

Game: 4	Bruce Roach, vs. Washburn, Oct. 29, 1960; Scott Bailey, vs. FHSU, Oct. 15, 1988
Season: 16	Jermaine Carpenter, 2004
Career: 27	Ronnie West, 1990-91

CAREER TOUCHDOWNS

Player	TDs
1. Ronnie West, 1990-91	27
2. Jermaine Carpenter, 2003-04	23
3. John Brown, 2011-pres.	20
4. Blaise Bauer, 1985-88	18
5. Marques Nelson, 2005-08	15

SINGLE SEASON TOUCHDOWNS

Player	TDs
1. Jermaine Carpenter, 2004	16
2. Ronnie West, 1991	14
3. Ronnie West, 1990	13
4. John Brown, 2011	12
5. Bruce Roach, 1960	10
5. Gene Wayenberg, Jr., 1981	10

MOST RECEPTIONS

Game: 13	John Brown, vs. Missouri Western, Oct. 20, 2012
Season: 74	Ronnie West, 1991
Career: 124	John Brown, 2011-pres.

CAREER RECEPTIONS

Player	Rec.
1. John Brown, 2011-pres.	124
2. Ronnie West, 1990-91	123
3. Caleb Farabi, 2005-08	101
4. Wilton Jones, 1976-79	92
5. Marques Nelson, 2005-08	89

SINGLE SEASON RECEPTIONS

Player	Rec.
1. Ronnie West, 1991	74
2. John Brown, 2012	63
3. John Brown, 2011	61
4. Ray Staten, 1992	54
5. Ronnie West, 1990	49
5. Jermaine Carpenter, 2004	49

SCORING

MOST TOTAL POINTS

Game: 32	two times, most recently by: Ronald Moore, vs. Portland St., Dec. 5, 1992
Season: 254	Ronald Moore, 1992
Career: 480	Ronald Moore, 1989-92

CAREER SCORING

Player	TD	1XP	2XP	FG	Pts.
1. Germaine Race, 03-06 †	109	0	2	0	638
2. Ronald Moore, 89-92	78	0	6	0	480
3. Nathan Alleman, 03-06	0	314	0	29	401
4. Darren Dawson, 88-91	61	0	0	0	366
5. Neal Philpot, 01-04	60	0	1	0	362

† NCAA all division record (former)

SINGLE SEASON SCORING

Player	TD	1XP	2XP	FG	Pts.
1. Ronald Moore, 1992	41	0	4	0	254
2. Germaine Race, 2005	33	0	0	0	198
3. Germaine Race, 2006	31	0	1	0	188
4. Germaine Race, 2004	27	0	1	0	164
5. Nathan Alleman, 2004	0	109	0	8	133

MOST TOUCHDOWNS

Game: 5	five times, most recently by: John Brown, vs. Missouri Southern, Nov. 12, 2011
Season: 41	Ronald Moore, 1992
Career: 109	Germaine Race, 2003-06 †

† NCAA all division record

CAREER TOUCHDOWNS

Player	TDs
1. Germaine Race, 2003-06	109
2. Ronald Moore, 1989-92	78
3. Darren Dawson, 1988-91	61
4. Anthony Chatmon, 1998-2001	52
5. Richard Overton, 1977-80	50

SINGLE SEASON TOUCHDOWNS

Player	TDs
1. Ronald Moore, 1992	41
2. Germaine Race, 2005	33
3. Germaine Race, 2006	31
4. Germaine Race, 2004	27

SINGLE GAME TOUCHDOWNS

1. 5	Richard Overton, vs. MWSU, Nov. 3, 1979
1. 5	Ronald Moore, vs. N.Dakota St., Nov. 27, 1992
1. 5	Ronald Moore, vs. Portland St., Dec. 5, 1992
1. 5	Justin Johnson, vs. MSSU, Sept. 27, 1997
1. 5	John Brown, vs. MSSU, Nov. 12, 2011

MOST TOTAL POINTS/PLACEKICKER

Game: 18	Josh Barcus, vs. WU, Nov. 14, 1998 (3 FG, 9 PAT)
Season: 133	Nathan Alleman, 2004
Career: 401	Nathan Alleman, 2003-06

CAREER SCORING BY A PLACEKICKER

Player	XP	FG	Total
1. Nathan Alleman, 2003-06	314	29	401
2. James Jenkins, 1988-91	195	35	300
3. Josh Barcus, 1995-98	155	44	287
4. Jared Witter, 2007-2010	142	23	211
5. Mike Bowman, 1985-87	117	27	198

SINGLE SEASON SCORING BY A KICKER

Player	XP	FG	Total
1. Nathan Alleman, 2004	109	8	133
2. Nathan Alleman, 2005	88	11	121
3. Chase McCoy, 2011	65	18	119
4. James Jenkins, 1990	63	12	99
5. Mike Bowman, 1986	53	13	92

MOST FIELD GOALS MADE

Game: 4	Josh Barcus, vs. UCM, Oct. 15, 1998
Season: 18	Chase McCoy, 2011
Career: 44	Josh Barcus, 1995-98

CAREER FIELD GOALS MADE

Player	FG
1. Josh Barcus, 1995-98	44
2. James Jenkins, 1988-91	35
3. Nathan Alleman, 2003-06	29
4. Mike Bowman, 1985-87	27
5. Jared Witter, 2007-2010	23

SINGLE SEASON FIELD GOALS MADE

Player	FG
1. Chase McCoy, 2011	18
2. Josh Barcus, 1998	16
3. Josh Barcus, 1995	13
3. Mike Bowman, 1986	13
3. Daniel Chappell, 2002	13

MOST CONSECUTIVE FGs MADE

11	Josh Barcus, Sept. 19, 1998 to Oct. 24, 1998
----	----------------------------------------------

MOST PATS MADE

Game: 13	N. Alleman, vs. Missouri S&T, Sept. 25, 2004
Season: 109	Nathan Alleman, 2004
Career: 314	Nathan Alleman, 2003-06 †

† NCAA Division II Record

CAREER PATS MADE

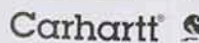
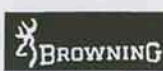
Player	PAT
1. Nathan Alleman, 2003-06	314
2. James Jenkins, 1988-91	195
3. Josh Barcus, 1995-98	155
4. Jeff Wood, 1992-94	120
5. Mike Bowman, 1985-87	117

SINGLE SEASON PATS MADE

Player	PAT
1. Nathan Alleman, 2004	109
2. Nathan Alleman, 2005	88
3. Nathan Alleman, 2006	70
4. Chase McCoy, 2011	65
5. James Jenkins, 1990	63

MOST CONSECUTIVE PATS MADE

123	Nathan Alleman, Oct. 8, 2005 to Dec. 2, 2006
-----	----------------------------------------------



1806 N. Broadway
Pittsburg, KS 66762

620-231-7740
1-800-TRY LEVI



2013 PITT STATE FOOTBALL

PUNT RETURNS

HIGHEST PUNT RETURN AVG. (SINCE 1960)

Season: 17.3 Bill Presson, 1960 (16-276)
Career: 17.3 Bill Presson, 1960 (16-276)

CAREER HIGHEST PUNT RETURN AVG. (MIN. 15 RET.)

Player	Ret.	Yds.	Avg.
1. Bill Presson, 1960	16	276	17.25
2. Ronnie West, 1990-91	39	585	15.00
3. John Brown, 2011-present	55	799	14.53
4. Harrison Kush, 2006-08	52	724	13.90
5. Monte Weathers, 1984-87	61	686	11.25

SINGLE SEASON HIGHEST PUNT RETURN AVG. (MIN. 10 RET.)

Player	Ret.	Yds.	Avg.
1. Bill Presson, 1960	16	276	17.25
2. Harrison Kush, 2006	19	325	17.11
3. Ronnie West, 1990	24	383	15.96
4. John Brown, 2012	28	430	15.36
5. John Brown, 2011	27	369	13.67

KICKOFF RETURNS

HIGHEST KICKOFF RETURN AVG. (SINCE '60)

Season: 31.9 Bill Presson, 1960 (9-287)
Career: 27.5 Levi Neville, 2000-03 (38-1044)

CAREER HIGHEST KICKOFF RETURN AVG. (MIN. 25 RET.)

Player	Ret.	Yds.	Avg.
1. Levi Neville, 2000-03	38	1044	27.47
2. Ronnie West, 1990-91	36	987	27.42
3. Chris Hudson, 1994-96	52	1414	27.19
4. Ronald Moore, 1989-92	42	1084	25.81
5. Bryan Pray, 2005-06	53	1359	25.64

SINGLE SEASON HIGHEST KICKOFF RETURN AVG. (MIN. 9 RET.)

Player	Ret.	Yds.	Avg.
1. Bill Presson, 1960	9	287	31.89
2. Levi Neville, 2001	17	526	30.94
3. Gene Wayenberg, 1956	9	272	30.22
4. Levi Neville, 2000	9	271	30.11
5. Chris Hudson, 1996	19	560	29.47

PUNTING

HIGHEST PUNTING AVG.

Season: 46.0 Brian Moorman, 1997 (41-1884)
Career: 44.0 Brian Moorman, 1995-98 (188-8267)

CAREER HIGHEST PUNTING AVERAGE (MIN. 50 PUNTS)

Player	Punts	Yds.	Avg.
1. Brian Moorman, 1995-98	188	8267	43.97
2. Jared Witter, 2007-2010	158	6582	41.66
3. Kevin Shipley, 1977-80	152	6142	40.41
4. David Mitchell, 1993-94	87	3505	40.29
5. Chris Lutz, 1999-2002	163	6352	38.97

SINGLE SEASON HIGHEST PUNTING AVERAGE (MIN. 130 ATT.)

Player	Punts	Yds.	Avg.
1. Brian Moorman, 1997	41	1884	45.95
2. Brian Moorman, 1998	38	1734	45.63
3. Brian Moorman, 1996	43	1884	43.49
4. Jared Witter, 2008	35	1493	42.65
5. Jared Witter, 2009	33	1400	42.40

DEFENSE

MOST TOTAL TACKLES (SINCE 1976)

Game: 21 Chris Brown, vs. N. Alabama, Dec. 12, 1992
Season: 172 B.J. McGovern, 1995
Career: 470 Chris Brown, 1992-95

CAREER TACKLES (SINCE '76)

Player	Tackles
1. Chris Brown, 1992-95	470
2. Josh Lattimer, 2002-05	394
3. Nate Dreiling, 2010-pres.	382
4. John Roderique, 1986-89	365
5. Mark Kilgore, 1979-82	363
6. Andrew Poling, 1996-99	359
7. Troy Wilson, 1989-92	317
8. Wes Baker, 1997-2000	314
9. Cooper Harris, 1992-94	295
10. Andy Sweet, 1990-94	287

SINGLE SEASON TACKLES (SINCE '76)

Player	Tackles
1. B.J. McGovern, 1995	172
2. John Burke, 1978	162
3. Nate Dreiling, 2010	160
4. Anthony Parks, 1995	154
5. Chris Brown, 1995	149
6. Earl Henry, 2001	146
7. John Roderique, 1989	143
8. James Gray, 1989	142
9. Nate Dreiling, 2011	139
10. Shane Talaya, 1991	136

SINGLE GAME TACKLES

- 21 Chris Brown, vs. North Alabama, Dec. 12, 1992
- 20 Chris Brown, vs. Northern Colorado, Nov. 18, 1995
- 20 Wes Baker, vs. Central Missouri, Sept. 23, 2000
- 19 Tim Bradbury, vs. Jacksonville State, Dec. 12, 1992
- 19 B.J. McGovern, vs. Northern Colorado, Nov. 18, 1995

MOST INTERCEPTIONS (SINCE 1974)

Game: 3 four times, most recently by:
Jeremy Neville, vs. WU, Sept. 21, 2002
Season: 9 Duke Palmer, 1992
Career: 20 Ted Adams, 1986-89

CAREER INTERCEPTIONS

Player	INT
1. Ted Adams, 1986-89	20
2. Barry Wren, 1987-90	18
3. Duke Palmer, 1989-92	17
4. Mark Kilgore, 1979-82	13
4. John Pringle, 1979-82	13

SINGLE SEASON INTERCEPTIONS

Player	INT
1. Duke Palmer, 1992	9
2. Rob Kaelin, 1983	8
2. Ted Adams, 1986	8
4. Mark Kilgore, 1981	7
4. John Pringle, 1981	7
4. Joel Thornton, 1992	7
4. Nate Dreiling, 2011	7

MOST QUARTERBACK SACKS (SINCE 1981)

Season: 23.0 Troy Wilson, 1992
Career: 46.0 Sam Pittman, 1980-83

CAREER QUARTERBACK SACKS

Player	Sacks
1. Sam Pittman, 1980-83	46.0
2. Troy Wilson, 1989-92	45.0
3. Ryan Meredith, 2003-06	32.5
4. Ben Peterson, 1995-98	29.0
5. Aaron McConnell, 2000-03	22.0

SINGLE SEASON QUARTERBACK SACKS

Player	Sacks
1. Troy Wilson, 1991	23.0
2. Sam Pittman, 1982	22.0
3. Ron Freeman, 1981	18.0
4. Ben Peterson, 1998	14.0
5. Roman Wiehebrink, 1986	13.0

MOST PASS BREAKUPS (SINCE 1981)

Season: 17 Donnie Johnson, 1987
Career: 40 Ted Adams, 1986-89

CAREER PASS BREAKUPS

Player	PBU
1. Ted Adams, 1986-89	40
2. Travis Stepps, 1997-2001	28
2. Levi Neville, 2000-03	28
4. Donnie Johnson, 1985-88	25
5. Andrew Poling, 1996-99	21

SINGLE SEASON PASS BREAKUPS

Player	PBU
1. Donnie Johnson, 1987	17
2. Travis Stepps, 2001	16
3. Kevin Harkless, 1987	15
4. Eric Wright, 2004	14
5. Ted Harre, 1984	12
5. Ted Adams, 1986	12
5. Eric Perks, 1992	12



FARMERS INSURANCE GROUP
of companies

RUA INSURANCE AGENCY, INC.

DAVID RUA

1504 N. Broadway - Pittsburg, Kansas

Phone 231-6460

AUTO • FIRE • LIFE • COMMERCIAL

THE First NATIONAL BANK

OF GIRARD



P.O. BOX 6
GIRARD, KANSAS
(620) 724-6111 (Phone)

Website:

www.fnbgirard.com

Online Banking and Bill Pay!

2013 PITT STATE FOOTBALL

PSU ATHLETICS STAFF



CAYTE BILLMAN

Asst. Softball Coach



GLENN BLISS

Play Clock Operator



STEVE BRAZEAL

Operations Assistant



SCOTT BROYLES

Equipment Manager



TODD BRYNDS

Athletic Training



HENRY BUSET

PSU Team Filmer



VINCE DAINO

Video Board Operator



AMANDA DAVIED

Asst. Women's Bkb. Coach



TYLER DAWSON

Athletics Assistant



LORI DYER

Athletics Assistant



GRANT EBBERT

Athletics Assistant



ELIZABETH ECONOMON

Softball Coach



AARON FLOOD

Athletics Assistant



KATELYN FLOOD

Athletics Assistant



CADE GOSCH

Media Relations G.A.



LINDA GRAHAM

Spirit Squad Coach



GAVIN HOWSER

Athletics Assistant



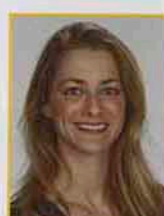
PRESTON INGRAM

Asst. Men's Basketball Coach



TIM JAMES

Game Clock Operator



NATALIE JEPSON-KUNZINGER

Dance Team Coach



KEVIN KALM

Asst. Athletic Trainer



KARL KUNKEL

Faculty Representative



LANE LORD

Women's Basketball Coach



TODD LOVELAND

Golf Coach



BRIAN MANTOOTH

Asst. Track & Field Coach



ERIC MILLER

Asst. Baseball Coach



VERN MORTON

Scoreboard Operator



JENNY MUELLER

Asst. Volleyball Coach



ALEX MUFF

Athletics Assistant



KEVIN MUFF

Men's Basketball Coach



MATT MURRAY

Baseball Coach



DARREN PRATHER

Public Address Announcer



NICK PHILLIPS

Asst. Baseball Coach



TIM PIERCE

Operations Assistant



CALLIE RONAN

Athletics Assistant



KYLE RUTLEDGE

Asst. Track & Field Coach



RYAN STOCK

Asst. Men's Basketball Coach



IBRAHEEM SUBERU

Volleyball Coach



DOUG WHITTEN

Marching Band



MARY WOLFE

Ticket Operations Asst.



MICHAEL ZAFUTA

Team Physician



Team Threads

Custom Screen Print, Embroidery & Logo Wear

119 W. Maple, Columbus, KS 66725 – teamthreads@hotmail.com
620-429-4402

SEK URGENT CARE

IMMEDIATE CARE & INJURY CENTER

OPEN 7 DAYS A WEEK

Where Family and Time Matter



OCCUPATIONAL CARE NETWORK SERVICES:

- Drug Screening
- Physicals
- DOT
- Audiology
- Vision testing
- X-Ray
- Functional Capacity Testing
- Smoking Cessation Program
- Weight Loss Management
- PFT
- Breath Alcohol Testing

620-231-8003



PREVENTATIVE & NON LIFE THREATENING INJURIES & ILLNESS

- Cuts/Lacerations/S titches
- Blood Pressure Checks
- Asthma
- Cough and Colds
- Bronchitis
- Infections
- Zip Pass Scheduling
- Allergies
- Nausea & Vomiting
- Rashes
- Sinus Infections
- Sore Throats
- Primary Care
- And Many Other Medical Services



WWW.SEKURGENTCARE.COM

• Located in Meadowbrook Mall •



2013 PITT STATE FOOTBALL

SUPPORT GROUPS



SPRIT SQUAD

First Row (L-R): Jordan Tate, Jessica Williams, Jayna Guerra. **Second Row:** Tiffany Jordan, Hanna Smedley, Tori DeClements, Jessica Corkill, Micky Walker, Hannah Pio. **Third Row:** Assistant Coach, John Rowe, Shelby George, Allison Smith, Syriena Kelley, Kayla Hughes, Clare Petrucci, Nichole Kolarik, Cheyenne Bass, Coach Linda Graham. **Fourth Row:** Adrian McElroy, Tyler Prussing, Eb Scroggins, Joe Samaniego, Jake Gehlbach, Braxton Reinke, Marcos Valadez. **Back Row:** DJ McCray, Myles Taylor, John Tricks, Tyler Drake, John Norman, Blake Schropp, Zach Maggard.

CRIMSON & GOLD DANCERS

Front Row (L-R): Jessica Crabtree, Jordan Tincher (Head Captain), Chelsea Montgomery (captain), Jamie Wellington. **Middle Row:** Gracie Spencer, Sara Joseph, Alesha Edwards, Olivia Laidler. **Back Row:** Macy Moutray, Haley Poulter, Natalie Jepson-Kundiger (coach), Katie Sands, Taylor Brumbaugh.



SPORTS MEDICINE STAFF

Left to Right: Josh Reed, Tanisha Troutt, Kevin Kalm, ATC, LAT, Tamara Erdman, Phil Carr, ATC, LAT, Liza Erwin, Todd Brynds, ATC, LAT, Nicole Goetz, Devin Linenbrink, Colin Pettibon.



New Century

Comprehensive Orthopedic Surgery
& Sports Medicine Services

New Century Orthopedics is a full service orthopedics group based in Pittsburg, Kansas, and servicing surrounding areas. The staff offers operative and non-operative treatment of arthritis, fractures, sports injuries, joint replacement, shoulder and knee injuries, foot and ankle problems, wrist and hand disorders, spinal problems and osteoporosis. New Century accepts all major insurances and workers compensation claims.



ON-SITE SERVICES

- Ambulatory Surgery Center
- Physical Therapy Department
- Certified Athletic Trainers
- Open MRI
- Bone Densitometry



Michael Zafuta, M.D.
Orthopedic Surgeon



PITTSBURG

Interiors



Chloe Kuhel PSU '09



We carry top furniture brands: Flexsteel, Bassett, Norwalk, Simply Amish and many more!



Kevin Crane PSU '95



Huge selection of tile, hardwood, carpet and area rugs



818 E. Hwy. K-171 Pittsburg KS • (620)231-3102

Hours: Mon.- Fri. 9-5:30 - Sat. 10-4

www.pittsburginteriors.com



We proudly employ PSU Gorillas



Tim & Patty McNair, Owners
PSU '80

An Independently Owned and Operated Member of Coldwell Banker Real Estate Corporation.

SOLD

**COLDWELL
BANKER**

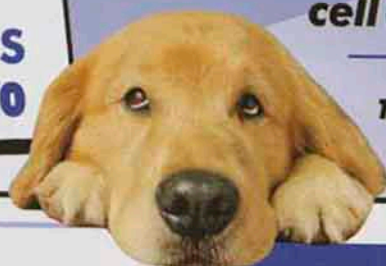
**JIM BISHOP
& ASSOCIATES
620-231-4370**

Serving Pittsburg, Kansas
and the surrounding areas
as a resource for all
MLS listings within the
Pittsburg Market Area.



**Jim Bishop
and Associates**
cell (620) 875-1821

TAKE A VIRTUAL
TOUR ONLINE
RIGHT NOW!



JIMBISHOP.COM

**COLDWELL
BANKER**

302 E. Centennial Dr.
Pittsburg, Kansas 66762
local: (620) 231-4370
toll free: 800-765-7080
www.jimbishop.com



Sandy Emerson
(620) 249-4841



Gail McClaskey
(620) 249-1086



Cindy Loy
(620) 235-9177



Amy Loy Herring
(620) 687-1241



Tyler Casey
(620) 249-5767



Bobbi Rogers
(620) 249-1180

For the latest
info on **all** MLS
Properties in
the Pittsburg
area, visit our
website today!



Carol Hammerbacher
(620) 249-0648



Jenni Hall
(620) 575-6411



Doug Hitchcock
(620) 232-4795



Amanda Vandevender
Office Manager



Jim Bishop
(620) 875-1821

Voted No.1 Real Estate Company in 2012

EVANS MOTORS

• SINCE 1935 •



**proud members of the
Gorilla Courtesy Car Program**

**PITTSBURG Ks. SOUTH 69 JCT / 400 JCT
GIRARD, KS 66743
PH: (866) 447-7815**



GO PITT!

Countryside Dentistry



Wylie Bell, DDS

232-CARE

**1034 U.S. 69
Frontenac, KS**

Show off your smile.

ClearCorrect



*"Entrust your
family with our
family. Where
we create
bigger, brighter,
more beautiful
smiles
everyday."*



2013 PITT STATE FOOTBALL

EMERGENCY INFORMATION

CARNIE SMITH STADIUM

- Reserved Seats
- Student Seats
- Gorilla Seats
- Club Seats
- General Admission
- Visitor Seats
- Handicap Seats



University Emergency Call Boxes are available at selected locations for 911 emergency:

Stadium East First North
Stadium East Second North
Stadium East Second South
Stadium East Third North
Stadium East Third South
Stadium East Fourth North
Stadium East Fourth South
Stadium East Elevator
East Second-Wall by Elevator

911	Stadium West Second North	911
911	Stadium West Second South	911
911	Stadium West Third Central	911
911	Stadium West Elevator	911
911	West Stadium Press Box	Phone

Trained Personnel are on hand to assist in the event an emergency situation occurs during a football game at Carnie Smith Stadium.

If necessary, the public address announcer will provide instructions for evacuating the stadium in the event of severe weather, fire, or another emergency situation.

Fire extinguishers are available in the following locations:

East Stadium

Level 1: North across from restroom
Level 1: Central across from elevator
Level 1: South across from restroom
Level 2: North near handicapped seating
Level 2: Near Elevator
Level 2: South near handicapped seating
Level 3: North by stairwell
Level 3: Near Elevator
Level 3: South by stairwell
Level 4: Near Elevator
Skyboxes
Concession Stands

West Stadium

Level 1: Concession Stands
(Fire Alarm Pull Boxes are located on the North & South Ends and by Ticket Booths)
Level 2: North
(Fire Alarm Pull Box located near extinguisher)
Level 2: Two Centrally Located
(Fire Alarm Pull Box located near stairs)
Level 2: South
(Fire Alarm Pull Box located near extinguisher)
Level 3: Central
(Fire Alarm Pull Box located near extinguisher)
Skyboxes and Rua Box
Concession Stands, West Pantry on 2nd Level

GET READY FOR GAMEDAY AT THE

GORILLA BOOKSTORE

LOCATED INSIDE THE OVERMAN STUDENT CENTER



The Gorilla Bookstore is the official Pitt State bookstore, carrying all your Gorilla clothing, gift items and classroom needs.

Order online at www.pitstate.bkstore.com
or call (620) 231-1930

Best wishes to all Gorilla Athletes and Coaches from the Gorilla Bookstore!

Proud supporters of GORILLA FOOTBALL!



Dowe Quick



1953-2013

Celebrating 60 Years



www.koamtv.com

COME VISIT

GORILLA NATION

AT

SPORTSWEAR

HATS

LICENSE PLATES

CAR FLAGS

BANNERS

GLASSWARE

FOOTBALLS

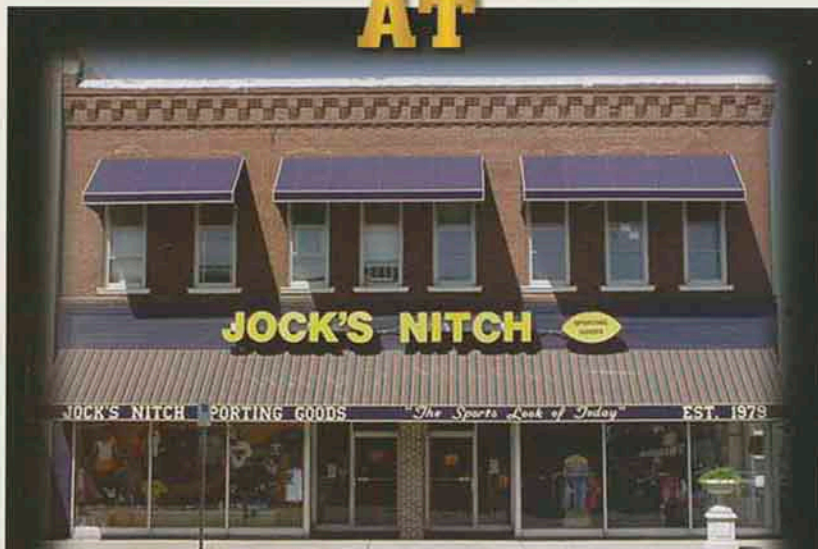
JEWELRY

LICENSE FRAMES

STICKERS

CLOCKS

KEYCHAINS



523 N BROADWAY 620-231-9410

WWW.**JOCKSNITCH**.com



Like us on Facebook
"Jock's Nitch Sporting Goods"



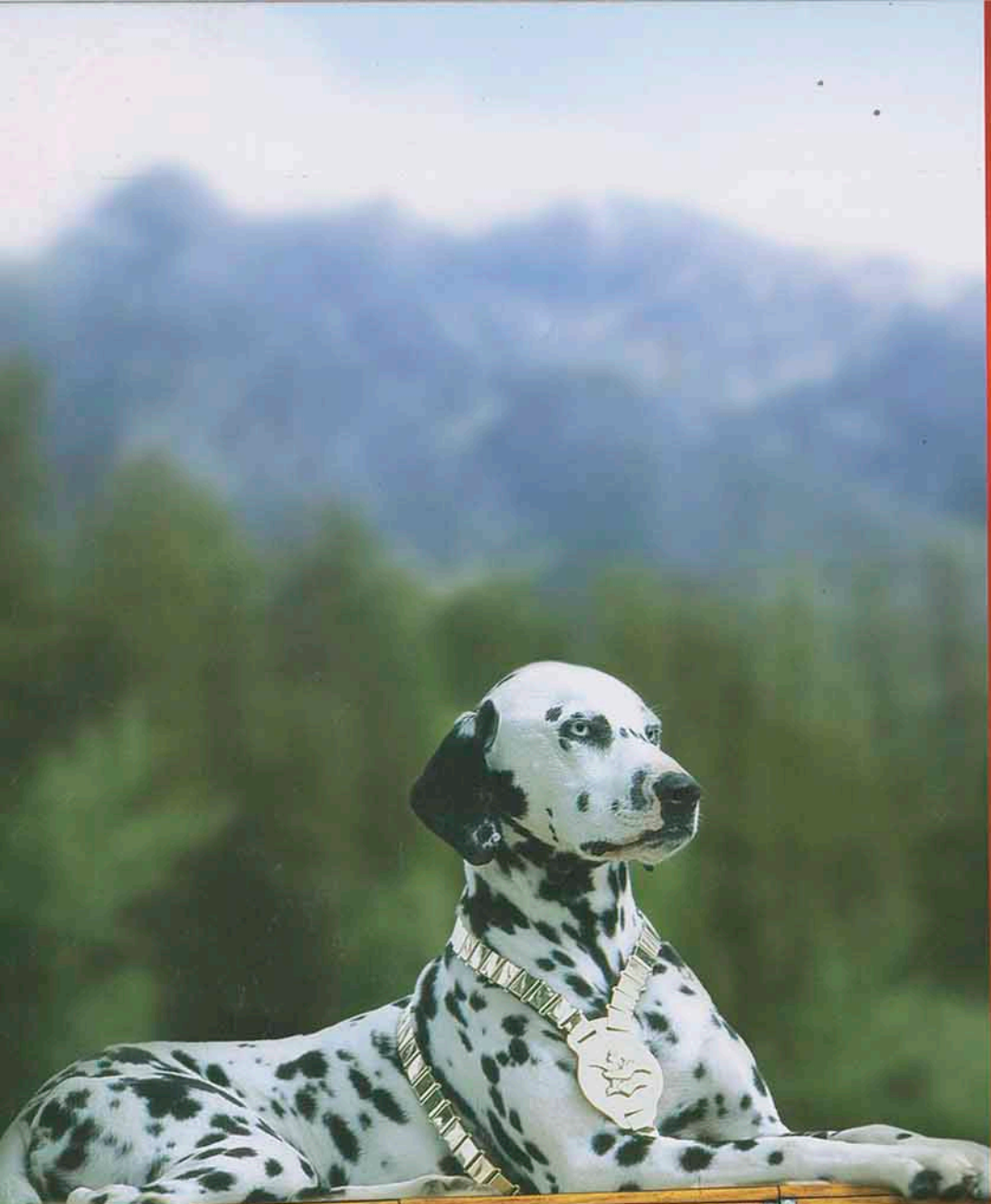
Follow us on Twitter
@JocksNitchPSU



*Infants, Toddlers, Youth,
Mens & Womens Clothing, T-Shirts,
Sweatshirts, Polos, Jackets, Embroidery,
Custom Screen Printing & Much More!*



Monday thru Saturday 9AM-7PM



Budweiser

**Your Commitment
is Spot On**

*We at Eagle Beverage,
proud distributor of
Budweiser, appreciate your
commitment to enjoying
our products responsibly.*

*We proudly support
Pittsburg State University.*



Welcome to Pittsburg State University

Family Day 2013

Every year Pittsburg State University honors students for their academic and co-curricular achievements. It is also important for us to recognize the families and friends whose love and support are integral elements in a student's success. Today we honor the families of all PSU students for their support and encouragement.

The Honorary Family Award is a program sponsored by the Pittsburg State University Foundation and the Advancement Ambassadors. PSU students were given the opportunity to nominate their family for this prestigious award by providing a written response to a series of questions. A committee of alumni, students, and staff reviewed each application and ranked each nominee. Our congratulations to all the families that were nominated!

Pittsburg State University is pleased to announce:

The 2013 Honorary Family Michael & Jill Chaloupka Liberty, MO

Mr. and Mrs. Chaloupka were nominated by their daughter, Abbey, a sophomore Graphic Communication major:

In her nomination, Abbey wrote:

"Since the moment I was born, my family has been my rock and my foundation. I know that I can rely on them and trust in them to support me in all that I do. My family always encouraged me to dream big and live up to my full potential. My parents have spent their lives raising my brother and I to be the best that we can be, by instilling values of respect, honesty, loyalty, generosity, and love into our lives. And just like my parents make everyone feel at home, so does Pittsburg State University."

Congratulations Michael & Jill Chaloupka!

Go Gorillas!



Pittsburg State University Center for the Arts



**Honor a loved one.
Show your support
of the arts.**

Seat plaques in the large performance hall are still available for gifts of \$500 and \$1,000. All gifts will support completion of the facility.



For additional information, visit:
pittstate.edu/centerforarts

To make a gift, visit:
pittstate.edu/givenow

Office of University Development
phone: 620-235-4768
email: devel@pittstate.edu



**John and Jane
Doe**

In Memory of
Jane Doe
The Jane Doe Family

Sample seat plaques

*Congratulate
Julie West*

Nevada Middle School

Pitsco Educator of the Game

- Eighth grade practical technology education instructor
- Entering her 23rd year in education
- Sponsors Nevada Middle School Renaissance/Student Council, a program that has received Missouri state awards
- Serves on the MAP Steering, Teacher Evaluation, Instructional Practices Inventory, and Data committees
- Member of Bethel Missionary Baptist Church
- Served as the Cystic Fibrosis Fundraiser Chairperson, Penny Wars student scholarship chairperson, Ambulance Barn Toy Drive volunteer and food drive volunteer
- Received her bachelor's degree from Missouri State in 1991 and her master's degree from Pittsburg State in 1997
- Goes the extra mile for all students, including providing extra tutoring both before and after school

For winning today's award, Mrs. West will receive a recognition plaque during pregame activities on the field. In addition, Pitsco will donate \$500 to Nevada Middle School in honor of Mrs. West.

To nominate a teacher or administrator for the Pitsco Educator of the Game, go to www.PittStateGorillas.com.





Mariner Wealth Advisors

Plan your arrival



At Mariner Wealth Advisors, we work as a team to help clients and their families achieve and maintain financial peace of mind – preserving the wealth they have created and building a legacy for future generations of family and business leaders. Nationally ranked by Barron's, we're here to help you achieve your goals.*

2012

- #1 Top Financial Advisor in the state of Kansas
- #4 Top 100 Financial Advisors
- #7 Top 100 Independent Wealth Advisors

2011

- #1 Top Financial Advisor in the state of Kansas
- #6 Top 100 Independent Wealth Advisors
- #17 Top 100 Financial Advisors



Darrell Markley

Senior Wealth Advisor
Pittsburg Office
620 240-1872

darrell.markley@marinerwealthadvisors.com



Kyndra Burgess

Wealth Advisor
Pittsburg Office
620 240-1870

kyndra.burgess@marinerwealthadvisors.com



Lindsay Halsey

Client Service Associate
Pittsburg Office
620 240-1809

lyndsay.halsey@marinerwealthadvisors.com

* Barron's ranked Marty Bicknell and the teams at Mariner the number four financial advisor and number seven independent wealth advisor nationally in 2012. Barron's also ranked Bicknell the #1 advisor in the state of Kansas for 2009, 2010, 2011 and 2012. The Barron's recognitions are based upon information compiled using data for Mariner Holdings, a global financial services firm that owns and manages both Mariner Wealth Advisors and its affiliate, Montage Investments, an independent asset management firm.