

Pittsburg State University

Pittsburg State University Digital Commons

Football Programs, 1916-2013

University Archives

9-7-2013

Northeasten State vs. Pittsburg State

Pittsburg State University

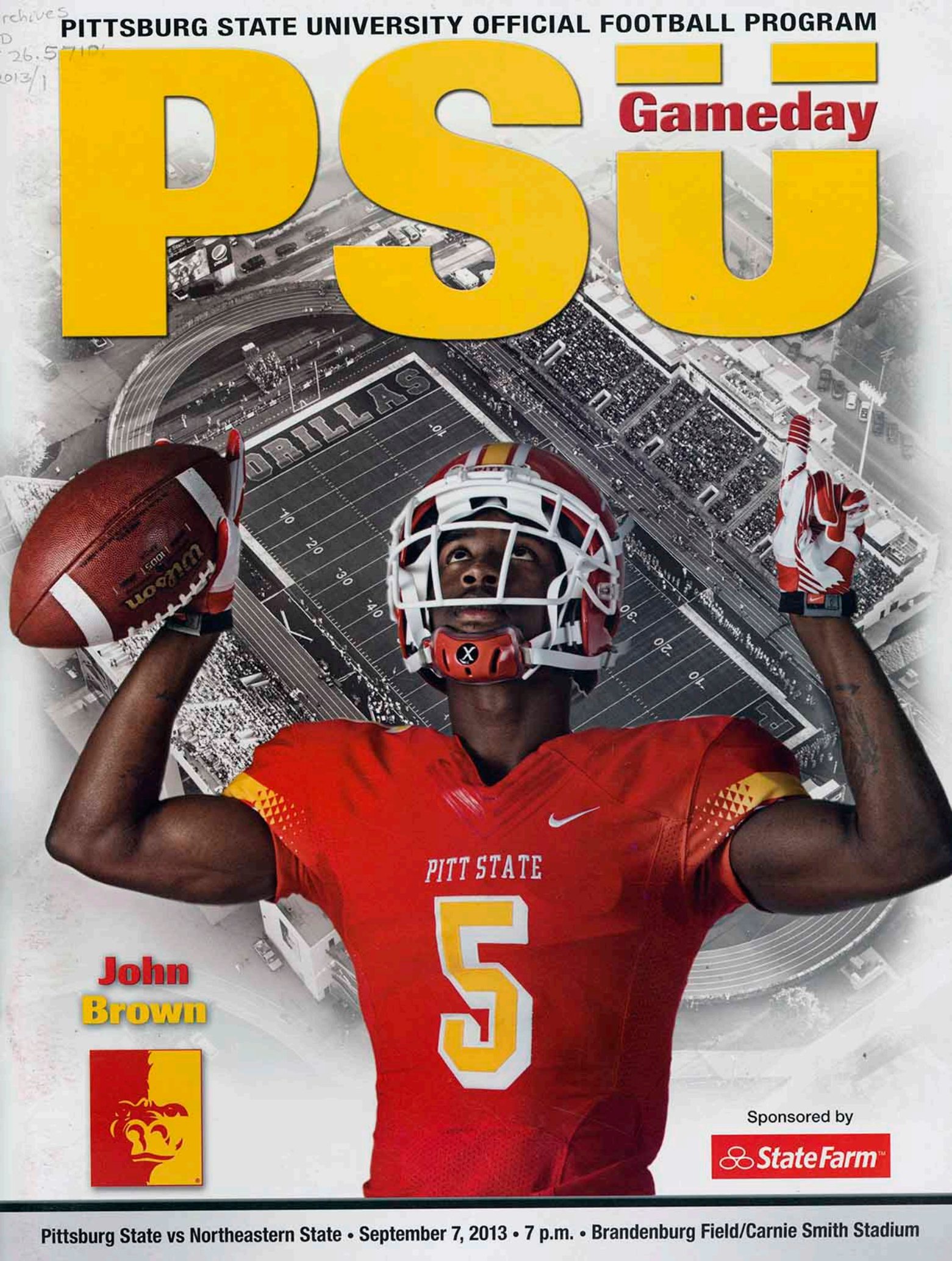
Follow this and additional works at: <https://digitalcommons.pittstate.edu/footb>

Recommended Citation

Pittsburg State University, "Northeasten State vs. Pittsburg State" (2013). *Football Programs, 1916-2013*. 37.

<https://digitalcommons.pittstate.edu/footb/37>

This Book is brought to you for free and open access by the University Archives at Pittsburg State University Digital Commons. It has been accepted for inclusion in Football Programs, 1916-2013 by an authorized administrator of Pittsburg State University Digital Commons. For more information, please contact digitalcommons@pittstate.edu.



archives
D
26.5710
013/1

PITTSBURG STATE UNIVERSITY OFFICIAL FOOTBALL PROGRAM

PSU

Gameday

**John
Brown**



Sponsored by



Pittsburg State vs Northeastern State • September 7, 2013 • 7 p.m. • Brandenburg Field/Carnie Smith Stadium



Freddy's

FROZEN CUSTARD &
STEAKBURGERS®

1314 S Broadway • Pittsburg, KS • 620.308.6508



THE TASTE THAT
brings you back.

www.freddysUSA.com



Fresh FOOD FOR
OUR *Hungry* FANS

Freddy's is a proud sponsor
of Pittsburg State athletics!

START LEADING OTHERS.
START ABOVE THE REST.
START ACCOMPLISHING MORE.
START DEFINING YOURSELF.
START MAKING A DIFFERENCE.
START FEELING INSPIRED.

START STRONG.

There's strong. Then there's Army Strong. Enroll in Army ROTC at PSU to complement your education with the training, experience and skills needed to make you a leader. Army ROTC also offers the opportunity to compete for full-tuition scholarships and a monthly stipend for your education. And when you graduate, you will have an edge in life as an Army Officer and a leader.

ARMY ROTC

U.S. ARMY
ARMY STRONG.

For more information please contact CPT Chad Murrow
at 620-235-4898 or visit: goarmy.com/rotc/psu

© 2008. Paid for by the United States Army. All rights reserved.

2013 PITT STATE FOOTBALL

SUPPORT GROUPS



SPRIT SQUAD

First Row (L-R): Jordan Tate, Jessica Williams, Jayna Guerra. **Second Row:** Tiffany Jordan, Hanna Smedley, Tori DeClements, Jessica Corkill, Micky Walker, Hannah Pio. **Third Row:** Assistant Coach, John Rowe, Shelby George, Allison Smith, Syriena Kelley, Kayla Hughes, Clare Petrucci, Nichole Kolarik, Cheyenne Bass, Coach Linda Graham. **Fourth Row:** Adrian McElroy, Tyler Prüssing, Eb Scroggins, Joe Samaniego, Jake Gehlbach, Braxton Reinke, Marcos Valadez. **Back Row:** DJ McCray, Myles Taylor, John Tricks, Tyler Drake, John Norman, Blake Schropp, Zach Maggard.

CRIMSON & GOLD DANCERS

Front Row (L-R): Jessica Crabtree, Jordan Tincer (Head Captain), Chelsea Montgomery (captain), Jamie Wellington. **Middle Row:** Gracie Spencer, Sara Joseph, Alesha Edwards, Olivia Laidler. **Back Row:** Macy Moutray, Haley Poulter, Natalie Jepson-Kundiger (coach), Katie Sands, Taylor Brumbaugh.



SPORTS MEDICINE STAFF

Left to Right: Josh Reed, Tanisha Troutt, Kevin Kalm, ATC, LAT, Tamara Erdman, Phil Carr, ATC, LAT, Liza Erwin, Todd Brynds, ATC, LAT, Nicole Goetz, Devin Linenbrink, Colin Pettibon.



pepsi

PEPSI COLA BOTTLING CO. OF PITTSBURG



1211 N. BROADWAY · PO BOX 1924 · PITTSBURG, KS 66762 · 620 231 3800

2013 PITT STATE FOOTBALL

TABLE OF CONTENTS

2013 Pitt State Schedule.....	1
Head Coach Tim Beck/PSU Coaching Staff.....	3
A.D. Jim Johnson/Athletics Administration.....	5
President Steve Scott.....	7
Pittsburg State University Profile.....	11
Carnie Smith Stadium.....	12
Conference Championships.....	13
Gorilla Fund.....	15
Endowment for Excellence in Athletics.....	16
Football Letterman's Donors.....	17
Endowed Scholarships.....	18
The Gorilla Players.....	21, 23-24, 41-42, 44, 46
Game Day Information	
Game Notes.....	29-39
NCAA Division II National Poll.....	30
Pitt State Roster.....	33
PSU/Opponent Two-Deeps.....	34
Opponent Roster.....	36
Kansas City Gorilla Club.....	51
PSU All-Time Records.....	53-58
Athletic Department Staff.....	59
Athletic Support Groups.....	61
Stadium Emergency Information.....	67

2013 SCHEDULE

Sept. 7	NORTHEASTERN STATE*	THE PITT	7 p.m.
Sept. 14	at Central Oklahoma*	Edmond, Okla.	6 p.m.
Sept. 21	SOUTHWEST BAPTIST*	THE PITT	7 p.m.
	FAMILY DAY		
Sept. 28	at Lincoln*	Jefferson City, Mo.	2 p.m.
Oct. 5	ABILENE CHRISTIAN	THE PITT	2 p.m.
	HOMECOMING		
Oct. 12	at Central Missouri*	Warrensburg, Mo.	1:30 p.m.
Oct. 19	vs. NW Missouri State*	Kansas City, Mo.	3 p.m.
	The Fall Classic at Arrowhead XII		
Oct. 26	at Missouri Western*	St. Joseph, Mo.	1:30 p.m.
Nov. 2	NORTHWESTERN OKLAHOMA	THE PITT	2 p.m.
	HALL OF FAME GAME		
Nov. 9	at Lindenwood*	St. Charles, Mo.	2:37 p.m.
	MIAA TV Game		
Nov. 16	MISSOURI SOUTHERN*	THE PITT	2 p.m.
	Sonic Miner's Bowl		

* - MIAA game HOME games in ALL CAPS



CDL
Electric • Heating • Cooling

Call The Professionals

620-231-6420

201 N. Joplin

Pittsburg, KS 66762

proud sponsor of the:

Tim Beck Radio Show • Monday Nights • KKOW 860 AM

THE BEST OF LOCAL SPORTS

KSN^{HD}
LOCAL NEWS



Eric Knecht & Chris Hagan

ACTION
12 **abc**
HD
NEWS



Cealey Godwin & Andy Searcy

2013 PITT STATE FOOTBALL

HEAD COACH TIM BECK



Tim Beck enters his fourth season as Pittsburg State University's head football coach and his 27th year on the Gorillas' staff. He has compiled a 26-10 (.722) record during his short tenure.

Beck served for 16 years as the Gorillas' offensive coordinator and 22 seasons as a member of the Pitt State coaching staff before becoming his alma mater's 14th Head Football Coach at a press conference on Dec. 9, 2009.

Beck led Pitt State to the school's fourth all-time national championship and a 13-1 record in his second season leading the Gorillas. He earned NCAA Division II National Coach of the Year honors from Liberty Mutual, the Don Hansen Football Committee and FieldTurf™, as well as MIAA Coach of the Year accolades.

In his inaugural season, Beck guided a youthful Pitt State squad to a 6-6 overall record, including a 13-9 victory over Concordia-St. Paul in the 2010 Mineral Water Bowl at Excelsior Springs, Mo.

In year two, the Gorillas won their first eight games, including a dramatic final second 38-35 victory over No. 1 ranked Northwest Missouri State University in The Fall Classic at Arrowhead X on Oct. 1. Pitt State clinched its first MIAA title since 2004 with a 51-28 victory over Missouri Southern in the regular season finale.

The Gorillas went on to post home victories over Washburn (31-22), NW Missouri State (41-16) and Delta State (49-23) to reach the NCAA-II National Championship Game for the fifth time in school history. At Florence, Ala., Beck's Gorillas broke open a 14-13 game with a blocked field goal return for a touchdown and a last-minute score to take a 27-14 halftime advantage against Wayne (Mich.) State. The Gorillas claimed the title with a 35-21 victory over the Warriors.

Last year, the Gorillas won their first five games before finishing the season with a 7-3 record.

Beck previously served as Assistant Head Coach for two years, after being named to that role on the Pitt State staff on December 13, 2007.

During his 16 seasons as offensive coordinator, the Gorilla offense consistently ranked among the finest units in NCAA Division II.

In 2008, Beck was selected the inaugural NCAA Division II Coordinator of the Year by FootballScoop.com, following a vote of his coaching peers.

In 2004, Beck's offensive unit established itself as the most prolific squad in the history of NCAA football. PSU shattered a 118-year-old scoring record, scoring an amazing 837 points (55.8 ppg). His squad also set the NCAA all division records for rushing (5,320 yards) and total offense (8,976 yards).

Beck's teams twice led Division II in scoring (2004, 2006) and ranked in the top two nationally in total offense three times (2004, 2005, 2006). His squads ranked among the national rushing leaders every season, leading Division II in 1995 (318.8 ypg) and 2004 (354.7 ypg).

Beck's "multiple choice" option attack also compiled 16,483 passing

yards (216.9 ypg) and 143 aerial touchdowns during his final six seasons as offensive coordinator (2004-09).

Prior to assuming the offensive coordinator's role, Beck served two years as Pitt State's defensive coordinator (1992-93). He became a full-time assistant on the Pitt State staff in 1989, after serving first as a student assistant (1987) and then as a graduate assistant (1988).

Beck worked with defensive ends, tight ends and wide receivers during his initial two seasons, before concentrating primarily on the inside linebacking corps from 1989-93. He worked with PSU's quarterbacks from 1994-2009.

During his tenure on the PSU staff, Beck has coached 47 All-Conference players and 23 All-Americans.

Beck was a two-year football letterman at Pittsburg State, playing defensive back for the Gorillas from 1985-86. He earned All-CSIU honors both seasons and was an NAIA All-District 10 pick as a senior. Beck also was a team captain in 1986.

Beck, a Ness City, Kan., native, played football at Dodge City Community College for two years before joining the Gorilla program. He earned his bachelor's degree in physical education from PSU in 1988 and a master's degree in physical education from PSU in the summer of 1989.

He is married to the former Gena Thomas, who competed in track & field and cross country for Pittsburg State from 1987-88. She serves as the Director of Donor Research in the PSU Development Office. The couple have a son, Derek, who turns 19 on Dec. 25, a daughter, Sydney, who turns 17 on Dec. 30, a son, Drew, who turned 14 on July 24, and a daughter, Samantha, who turns eight on Feb. 11. Derek is a redshirt freshman receiver for the Gorillas.



DAVID WIEMERS

Defensive Coordinator/
Assistant Head Coach



STEVE RAMPY

Offensive Coordinator



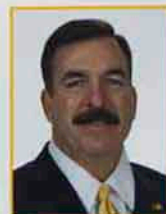
LANCE CULLEN

Defensive Secondary



RYAN HELLWIG

Defensive Line



JOHN PIERCE

Running Backs



CARL ROTH

Linebackers



STEVE WELLS

Offensive Line



LARRY GARMAN

Off-Campus Recruiting



JOHN KEMP

Defensive Secondary



FRANK NACCARATO

Wide Receivers



NEAL PHILPOT

Wide Receivers



DARRIEN GORDON

Defensive Secondary



IKE EGUA

Graduate Assistant



MARK CHESNUT

Student Assistant



LUKE MILLER

Student Assistant



ZACH RAMPY

Student Assistant



JOHN JOHNSON

Strength Coach

2013 PITT STATE FOOTBALL

DEPTH CHARTS

PITTSBURG STATE OFFENSE

WR	5	John Brown (5-11, 170, Sr.)
	17	Levi Kuntzsch (6-5, 211, Sr.)
TE	86	Conner Combes (6-5, 250, Sr.)
	88	Kyle Swartz (6-3, 226, Fr-RS)
LT	77	Cody Holland (6-6, 334, Sr.)
	78	Bo Weber (6-4, 273, Fr-RS)
LG	79	Tyler Smith (6-4, 291, Jr.)
	58	Zach Burkhart (6-3, 293, Jr.)
C	72	Taylor Peak (6-2, 267, Sr.)
	67	Bo Farrow (6-2, 250, Fr.)
RG	73	Ollie Venegas (6-3, 300, Jr.)
	70	Kale Carigan (6-5, 268, Jr.)
RT	68	Boston Higgins (6-3, 269, Jr.)
	71	Jesse Ingle (6-3, 255, Jr.)
WR	80	Austin Daniel (6-2, 201, So.)
	9	Marquise Cushon (5-10, 156, So.)
WR	18	Gavin Lutman (6-4, 201, Jr.)
	84	Bradley Argabright (6-1, 182, Jr.)
QB	12	Anthony Abenoja (6-3, 210, Jr.)
	3	Barrack Harger (6-4, 222, So.)
FB	30	Scott Lester (6-0, 224, Sr.)
	34	Brian Poston (6-0, 208, So.)
TB	1	Jeff Seybold, Jr. (5-11, 208, So.)
	33	Dre Holman (5-9, 209, Fr-RS)
PK	13	Connor Frazell (5-10, 183, Jr.)
LS	48	Alex Howdeshell (6-1, 238, So.)
H	81	Luke Rampy (5-9, 170, Jr.)

PITTSBURG STATE DEFENSE

DE	90	Joe Uzzel (6-4, 233, Sr.)
	57	Lewis Foutz (6-3, 227, So.)
NG	62	Deaven Jensen (6-1, 237, Jr.)
	99	Taye Irvin (6-1, 327, So.)
DT	94	Will Grissom (6-5, 269, Sr.)
	96	Dallas Shalz (6-2, 228, Jr.)
DE	97	Avery Adair (6-5, 228, Jr.)
	55	Heath Wilson (6-3, 250, Fr-RS)
LB	28	Joe Windscheffel (6-3, 228, Sr.)
	24	Tyler Disney (6-1, 214, Jr.)
LB	11	Nate Dreiling (6-4, 226, Sr.)
	52	Eric Brantley (5-11, 189, So.)
CB	8	Aries Herrion (5-10, 172, Jr.) OR
	21	Dino Teague (6-0, 172, So.)
SS	4	Jason Peete (6-3, 191, Jr.)
	25	Scott Roderique (6-0, 184, So.)
FS	45	Deron Washington (6-1, 191, So.)
	15	Isaac Maselera (6-0, 181, Jr.)
WS	19	Keeston Terry (6-2, 190, Jr.)
	32	Quad Ware (6-0, 192, Fr-RS)
CB	14	De'Vante Bausby (6-2, 164, Jr.)
	37	Jimmy Washington (5-11, 170, Fr-RS)
P	47	Griffin Knopp (6-3, 178, Jr.)
PR	5	John Brown (5-11, 170, Sr.)
KR	5	John Brown (5-11, 170, Sr.)
	9	Marquise Cushon (5-10, 156, So.)

NORTHEASTERN STATE OFFENSE

WR	7	Cruz Williams (6-2, 163, Sr.)
	84	Steffon Herd (6-4, 190, Fr-RS)
WR	82	Jordan Robinson (6-1, 180, So.)
	5	Tank Richmond (6-0, 165, Fr-RS)
LT	76	Ethan James (6-5, 315, Jr.)
	53	Tyler Easter (6-4, 275, Fr-RS)
LG	63	Johnathon Brown (6-2, 305, Jr.)
	77	Devin Crisp (6-3, 295, Fr-RS)
C	67	Ross Dvorak (6-1, 290, So.)
	70	Hudson Baab (6-2, 285, Fr-RS)
RG	79	Tevon Lawson (6-1, 325, So.)
	71	Aaron Patterson (6-2, 290, Fr.)
RT	72	Buck Spurger (6-6, 340, Jr.)
	74	Jacob Meador (6-4, 305, Fr.)
TE	13	Logan Andrews (6-4, 220, Jr.)
	81	Marco Renteria (6-2, 250, Fr-RS)
WR	17	Prince McJunkins (6-1, 185, Jr.)
	85	Aaron Kirkpatrick (5-6, 175, So.)
QB	8	Johnny Deaton (6-3, 210, Jr.)
	11	Thor Long (6-1, 205, So.)
RB	20	Joel Rockmore (5-7, 185, Jr.)
	22	Terrance Dixon (5-10, 189, Jr.)
FB	43	Nick Whitlow (6-0, 230, Sr.)
	35	Lane Dortch (6-0, 220, Fr-RS)
PK	39	Dylan Beers (6-1, 195, Jr.)
LS	65	Anthony Frazier (6-1, 290, So.)
H	17	Prince McJunkins (6-1, 185, So.)

NORTHEASTERN STATE DEFENSE

DE	23	Cole Johnson (6-2, 250, Sr.)
	92	Jeremiah Milton (6-2, 230, Fr-RS)
NG	93	Faafetai Te'o (6-1, 305, Sr.)
	62	Bobby Poiter (6-1, 287, Jr.)
DT	66	Kenny Garrett (6-4, 290, Sr.)
	90	Kinley Choute (6-2, 310, Jr.)
DE	33	James Renfrow (6-2, 205, So.)
	91	Leo Gross (6-3, 250, Jr.)
LB	24	Colten Nevel (6-1, 195, Jr.)
	30	Carson Smallwood (6-0, 190, Fr.)
LB	57	Jack Gray (6-1, 220, Sr.)
	40	Eddie General (5-10, 190, Jr.)
LB	41	Langston Jones (6-0, 205, Sr.)
	29	Beau Proctor (5-10, 205, Fr.)
CB	4	Marquin Watts (5-10, 165, Sr.)
	42	David Lewis (5-9, 185, Sr.)
FS	15	Kyler Harris (6-0, 180, So.)
	19	Darrain Winston (5-11, 175, Fr-RS)
SS	3	Victor Johnson (6-1, 190, Sr.)
	31	Steven Hopper (6-0, 190, So.)
CB	10	Vernon Jones (5-11, 165, Sr.)
	46	Chandler Barr (6-1, 170, Jr.)
P	39	Dylan Beers (6-1, 195, Jr.)
PR	10	Vernon Jones (5-11, 165, Sr.)
KR	20	Joel Rockmore (5-7, 185, Jr.)
	10	Vernon Jones (5-11, 165, Sr.)

2013 PITT STATE FOOTBALL

ATHLETIC DIRECTOR JIM JOHNSON



Jim Johnson became the 10th all-time director of intercollegiate athletics at Pittsburg State University on July 30, 2010. He officially began his tenure at the school five weeks later on Sept. 7, 2010.

As athletics director, Johnson provides leadership and support for the Gorillas' 13 varsity intercollegiate sports programs as well as the department's more than 50 full-time and part-time

administrative and coaching staff members.

Johnson also provides leadership in the development and implementation of a departmental strategic plan that is aligned with the university's strategic plan; provides oversight of compliance with NCAA and MIAA rules and work in conjunction with the MIAA office in support of conference activities and initiatives; develops and advances marketing, communications, sponsorship, and fundraising in support of PSU and its athletics program and develops and nurtures relationships with donors, local corporations, and community entities in support of the athletics programs.

Johnson served as commissioner of the MIAA from July 1, 2007 through July 30, 2010, serving as chief operating officer for the 12-member conference, of which Pitt State is a member. He handled the administration of conference championships for 17 sports and provided leadership in areas of marketing and promotions, broadcasting, personnel management, rules compliance, strategic planning, officiating and media relations, as well as provided oversight and management of annual financial resources totaling more than \$1 million.

From 2005 to 2007 he held the position of athletics director at Texas A&M University-Commerce, before taking his assignment with the MIAA. Johnson briefly served as an intercollegiate athletics consultant before becoming the associate athletics director for development in 2003 at the University of Central Missouri.

In 1997, he accepted a position with the National Collegiate Athletic Association, first as a membership services representative and later as a Division II governance liaison. As the governance liaison, Johnson provided legislative and strategic support to the DII Presidents Council, DII Management Council, legislative committee and various project teams and focus groups.

Johnson became the national chair of the NCAA Division II Men's Basketball Committee in June 2010 after serving on the national committee the previous year and held that position until his term

ended on July 31, 2012. On August 1, 2012, Johnson began a four-year term on the Division II Football Committee. He also served on the NCAA-II Membership Committee from 2005-09, including two years as the national chair (2007-09). Johnson was reappointed in 2011 to the NACDA Executive Committee for a four-year term after serving a one-year term in 2006-07 prior to his departure from Texas A&M Commerce. He's also an active member of the Division II Athletics Directors Association.

Johnson holds both a bachelor's and master's degrees from Tarleton State University, where he served as the compliance coordinator and men's athletic coordinator at Tarleton State from 1993-97.

Jim and his wife, Cindy, have two sons, Ely (14) and Riley (11).



RUSS JEWETT

Senior Associate
Athletics Director/Head
Track & Field Coach



PHIL CARR

Associate Athletics
Director/Head Athletic
Trainer



NATALIE CULLEN

Associate Athletics
Director/Senior Woman
Administrator



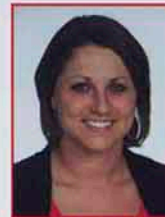
DAN WILKES

Associate
Athletics Director/
Communications



KENDALL GAMMON

Director of Major Gifts



LACIE ANDERSON

Office & Special Events
Manager



MARK DARKER

Finance Manager



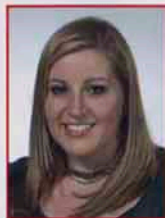
HEIDI JOHNSON

Director of Media
Relations & Promotions



JILL MINNEMAN

Director of Ticket
Operations



CARLA WEHMEYER

Athletics Photographer



BRAD WELLS

Director of Operations



People and Community Are What Counts

Good Luck Pittsburgh State Gorillas!

Commitment to our customers has been and will always be top priority. Call, click, or come by to discover how we combine products and people to not only meet, but exceed your local banking expectations.

We ask, listen and solve.



Commerce Bank
Member FDIC

commercebank.com / 231-8400

2013 PITT STATE FOOTBALL

DR. STEVE SCOTT, PRESIDENT



Dr. Steven A. Scott, a native of Baxter Springs, Kan., earned a BSED in mathematics from Pittsburg State University in 1973, an MS in mathematics from Oklahoma State University in 1977, an EdS from Pittsburg State University in 1984, and an EdD from Oklahoma State University in 1990.

Dr. Scott began his lifelong career in education as a teacher and coach at the Riverton Junior and Senior High Schools. He also taught and coached at the Miami (Okla.) Public Schools. From 1981 until 1988, Dr. Scott taught computer science courses at Northeastern Oklahoma A & M College in Miami. He joined the PSU faculty in 1989 as an assistant professor in the Department of Curriculum and Instruction. In 1995, Dr. Scott was named chairman of the Department of Special Services and Leadership Studies. From 1999 until 2006, he served as dean of the College of Education and was named vice president for academic affairs in 2006.

In June 2008, the title of Provost was added, recognizing the broad scope of Dr. Scott's leadership activities throughout campus. In 2009, the Kansas Board of Regents selected Dr. Scott to become the ninth president of Pittsburg State University.

Among his many responsibilities at PSU, Dr. Scott has been highly involved in the university's strategic planning process, academic program review, accreditation, and meeting the university's performance agreements with the Kansas Board of Regents.

Dr. Scott has written and presented in a variety of forums and formats in support of the use of instructional technologies by K-12 teachers. In addition, his grant writing efforts have yielded more than a million dollars in externally-funded projects that have benefitted hundreds of teachers, numerous school districts, the Greenbush Service Center, and other institutions of higher education.

Dr. Scott is a recipient of the PSU Outstanding Alumni Award, the Office of Multicultural Affairs' PSU Outstanding Chairperson Award, and the Southeast Kansas Education Service Center's Putting Kids First Award.

Dr. Scott and his wife, Cathy, live in Pittsburg. They have two grown children, Kylie and Phillip.



KANSAS BOARD OF REGENTS

The Kansas Board of Regents is a nine-member body appointed by the Governor, confirmed by the Kansas legislature, that governs the six public universities, supervises state-supported educational programs at the 19 community colleges and 11 technical schools and colleges and coordinates all 37 public postsecondary institutions in Kansas. Fred Logan of Prairie Village serves as board chairman, while Kenny Wilk of Lansing serves as vice chair.

Photo
N/A

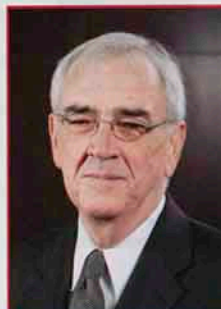
Shane Bangerter
Dodge City

Photo
N/A

Ann Brandau-Murguia
Kansas City



Mildred Edwards
Wichita



Tim Emert
Independence



Fred Logan
Prairie Village



Ed McKechnie
Pittsburg



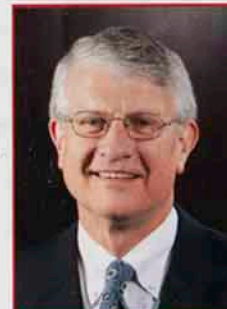
Robba Moran
Hays

Photo
N/A

Helen Van Etten
Topeka



Kenny Wilk
Lansing



Andy Tompkins
Topeka (Pres/CEO)

Ron's Supermarket is... **connected2u.**

TEXT

RONs to 72727 to begin receiving exclusive discounts via text message

FACEBOOK

Like us on Facebook!
Just search for Ron's Supermarket.

WWW

visit us on the web at
www.RonsSupermarket.com

RON'S

Supermarket



Official Grocery Store of Pitt State Athletics & Sponsor of Tailgater of the Game

310 East Centennial, Pittsburg • (620) 231-7920



COMMITTED TO THE COMMUNITY

Teamwork is critical to success in sports, helping one another to achieve victory. Arvest is proud to team up with our community to help support our athletes. We provide complete financial support when and where you need it. All the services of a large bank with the personal touch of a community banker - Arvest Bank.

216 N Broadway, Pittsburg
(620) 231-2350
arvest.com

We are a proud gameday sponsor
of the Pitt State Gorillas!

ARVEST[®]
BANK

Member FDIC
 EQUAL HOUSING
LENDER

Push'em back, Push'em back, waaay back.

Get discounts up to 40%*.

Call, click, or visit on your car insurance and find out how you can save money by switching to the #1 team.

Like a good neighbor, State Farm is there.®

CALL FOR A QUOTE 24/7.



Rex Garner

1317 N Broadway
Pittsburg, KS 66762
Bus: 620-231-7882

rex.garner.b6vc@statefarm.com



Lori Ann Spachek

2809 N Broadway Suite C
Pittsburg, KS 66762
Bus: 620-231-2027

www.loriannspachek.com



Kellan Foster

3640 E 7th Street
Joplin, MO 64801
Bus: 417-623-1700

www.kellanfoster.com



Connie Shiverdecker

1018 Main St
Neodesha, KS 66757
Bus: 620-325-2938

www.connieshiverdecker.com



Terry Bessman

120 N Kansas Avenue
Columbus, KS 66725
Bus: 620-429-2480

www.terrybessmaninsurance.com



Kyle Hickam Ins Agency Inc

Kyle Hickam
2606 E 32nd Street
Joplin, MO 64804
Bus: 417-624-8443



Harold Mann Insurance Agy Inc

Harold Mann
1109 W 8th
Coffeyville, KS 67337
Bus: 620-251-3680



Ryan Disbrow

115 N Maple Street
Garnett, KS 66032
Bus: 785-448-1660

www.ryandisbrow.com



Betty Blubaugh

1730 Broadway
Parsons, KS 67357
Bus: 620-421-4010

www.bettyblubaugh.com



Matthew P Davidson

1029 Gulf Street
Lamar, MO 64759
Bus: 417-682-3395

www.mattdavsoninsurance.com



Jennifer Dietsch

821 West Main Street
Chanute, KS 66720
Bus: 620-431-4280
www.jenniferdietsch.com



Darold L Elrod Ins Agy Inc

Darold Elrod
205 East Main
Chanute, KS 66720
Bus: 620-431-2680



Francis Buche

711 S Broadway
Pittsburg, KS 66762
Bus: 620-231-5080
www.francisbuche.com



Les Hammett

3021 Main
Parsons, KS 67357
Bus: 620-421-2170
www.leshammett.com



Jerry Poston

1601 S Garrison
Carthage, MO 64836
Bus: 417-358-5052
www.jerryposton.com

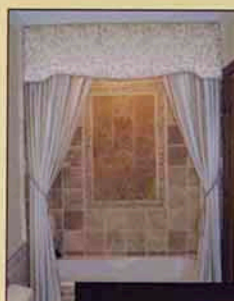
statefarm.com®

 **State Farm™**



Furniture, Flooring, Design Services, Accessories

PITTSBURG *Interiors*



Chloe Kuhel PSU '09.



Kevin Crane PSU '95



We carry top furniture brands: Flexsteel, Bassett, Norwalk, Simply Amish and many more!



Huge selection of tile, hardwood, carpet and area rugs



818 E. Hwy. K-171 Pittsburg KS • (620)231-3102

Hours: Mon.- Fri. 9-5:30 - Sat. 10-4

www.pittsburginteriors.com



We proudly employ PSU Gorillas



Tim & Patty McNair, Owners
PSU '80





TOYOTA • SCION • VOLKSWAGEN

785-843-7700 • 1-800-787-9664

3400 South Iowa, Lawrence, KS

*The Miles Schnaer family and
Crown Toyota, Scion & Volkswagen
are proud supporters of*



Pittsburg
State
University

Paula (Beebe) Schnaer

*Bachelor of Science
Education '72*

Mandi (Schnaer) Dow

*Bachelor of Science
Education '99*

Ali Schnaer

**Maddox Miles
Dow**

Miles Schnaer

*Bachelor of Science
Biology '71*

www.crownautomotive.com

2013 PITT STATE FOOTBALL

PITTSBURG STATE UNIVERSITY



THIS IS PITTSBURG STATE UNIVERSITY

Founded in 1903, PSU was originally known as the State Manual Training Normal School, and featured a modest enrollment of 54 students. The ensuing century saw it evolve into Kansas State Teachers College in 1923, then Kansas State College of Pittsburg in 1959, and finally in 1977 the Pittsburg State University that nearly 7,300 students now attend.

Pittsburg State is considered one of the premiere educational institutions in the Midwest. More than 150 undergraduate and graduate degree programs are offered in the university's four colleges. Each college has earned national recognition for its programs, students and faculty. This recognition can be attributed to the outstanding quality of our faculty and to the student to faculty ratio, which is an incredibly low, 19-to-1. Eight out of ten Pittsburg State University students receive financial assistance.

The university's campus is located on 430 acres of beautifully maintained land in Pittsburg, Kansas. Technology and tradition are featured throughout the campus, with wireless internet available in every building. A sense of academic excellence emanates from the university's buildings, some of which are nearly a century old.

One of six universities governed by the Kansas Board of Regents, Pittsburg State is dedicated to its mission of helping students achieve their full potential.



2013 PITT STATE FOOTBALL

BRANDENBURG FIELD / CARNIE SMITH STADIUM

Pittsburg State University plays its home football games at Brandenburg Field/Carnie Smith Stadium, widely recognized as one of the finest venues in NCAA Division II.

Affectionately referred to as both "The Pit" and "The Jungle" by Gorilla players and fans, Brandenburg Field/Carnie Smith Stadium provides one of the strongest home field advantages in college football.

Entering the 2012 campaign, Pittsburg State has won 129 of its last 142 regular season home games, posting a 129-12-1 record (.912) over the last 27 seasons.

The Gorillas have won 73 percent of their home games during the 87-year history of the facility, with a 329-118-12 all-time home record since the facility opened in 1924.

PSU's home field advantage strengthened in 2001 with the completion of a \$5.7 million expansion project to Carnie Smith Stadium. With the improvements, all made possible by private funding, an additional 2,300 seats were added to Carnie Smith Stadium, including new club seating on both the East and West stands. The stadium capacity grew from 5,611 permanent seats to 7,950.

Additionally, 16 luxury sky boxes were added to the East side of the stadium. New restroom, concession stand and ticket booth facilities were created, an elevator, handicap accessibility and other ADA improvements were made.

Both the home and visitor locker room facilities underwent major improvements, and a new media room was added to the East side for PSU players and media personnel to utilize.

An additional eight luxury sky boxes and elevator service were added to the West side in the summer of 2006. The \$2.5 million project was made possible by private funding.

In 2008, PSU unveiled its new "Jungletron" video scoreboard — the largest replay board in Division II — in the south end zone of the stadium. This \$1.7 million project was made possible entirely by private funding.



Brandenburg

The facility was originally named Brandenburg Stadium, in honor of William Aaron Brandenburg, the first president of the University. It was built in 1923 with volunteer labor and money donated by students, alumni, faculty and citizens of Pittsburg.

In 1987, the University announced that the field would continue to bear the name of PSU's first president, but the stadium would be called Carnie Smith Stadium, in honor of the legendary PSU football coach who led the Gorillas to two NIAA national championships (1957 and 1961) and six conference titles during his tenure from 1949-66.

Construction of the facility began with volunteer labor during the summer of 1923, after a successful fund drive raised the necessary \$100,000 to build the stadium. To ensure its completion by the start of the 1924 season, PSU faculty members were required to help work up to eight hours per week.

On October 11, 1924, the first varsity football game was played at the new facility between PSU (known as Kansas State Teachers College) and Baker University, in front of approximately 4,000 fans. The team didn't disappoint all of those who worked so hard to build the new facility, earning a 6-0 victory. KSTC went on to post a 7-0-1 record that year earning the Kansas Intercollegiate Athletic Conference (KIAC) title under head coach Garfield W. Weede.

STADIUM RECORDS/MILESTONES

Overall Home Record: 332-120-12 (.728)

Regular Season Play: 308-112-12 (.713)

Post Season Play: 24-8 (.750)

Win No. 1: vs. Baker (6-0), Oct. 11, 1924

Win No. 100: vs. Washburn (27-6), Oct. 29, 1960

Win No. 200: vs. Arkansas-Monticello (23-7), Dec. 3, 1988

Win No. 250: vs. Missouri Southern (21-7), Oct. 19, 1996

Win No. 300: vs. Panhandle State (87-0), Sept. 9, 2006

DECADE BY DECADE

1920s: 12-13-0 (.480)	1970s: 26-22-3 (.539)
1930s: 29-17-1 (.628)	1980s: 50-7-0 (.877)
1940s: 24-16-6 (.587)	1990s: 58-5-1 (.914)
1950s: 31-15-0 (.671)	2000s: 51-7-0 (.885)
1960s: 34-12-1 (.734)	2010s: 13-6-0 (.684)

Consecutive Home Wins: 24 (Oct. 5, 1991 to Nov. 5, 1994)

Consecutive Home Losses: 9 (Oct. 6, 1928 to Oct. 3, 1930)

Undefeated Seasons at Home: 25

(1924, 1932, 1934, 1942-43, 1951, 1957, 1960-62, 1971, 1980-82, 1986, 1988, 1990, 1992-93, 1995, 1998, 2000, 2004, 2006, 2008)

Most Lopsided Home Win: 87-0

vs. Panhandle State, Sept. 9, 2006

Most Lopsided Home Defeat: 63-14

vs. Missouri Western, Oct. 20, 2012

Best Home Record (season): 9-0-0, 2004



Brandenburg Field/Carnie Smith Stadium • Dec. 10, 2011

During the last 15 seasons, Pittsburg State University has averaged 8,100 fans per home game (809,959 fans in 100 games). Last year, PSU averaged 8,657 fans in eight home games, ranking fifth nationally in attendance.

Top Home Game Attendance

(1961-present)

1. MWSU, Oct. 20, 2012	11,910
2. NWMSU, Oct. 13, 2001	11,862
3. LU, Sept. 22, 2012	10,779
4. UCO, Sept. 8, 2012	10,754
5. ESU, Oct. 18, 2003	10,383

Top Single Game Attendance

(Home, Away, Neutral)

1. vs. NWMSU, Oct. 17, 2002	26,695
2. vs. NWMSU, Nov. 6, 2004	25,542
3. vs. NWMSU, Nov. 4, 2006	22,561
4. vs. NWMSU, Oct. 4, 2008	21,376
5. vs. NWMSU, Oct. 29, 2005	21,044

2013 PITT STATE FOOTBALL

CONFERENCE TITLES

Pittsburg State has won outright or shared a total of 30 conference championships during the 105-year history of its intercollegiate football program, including 15 conference titles in the last 28 seasons.

YEAR	CONFERENCE	HEAD COACH	CONF. RECORD
2011	Mid-America Intercollegiate Athletics Association	Tim Beck	8-1-0
2004	Mid-America Intercollegiate Athletics Association	Chuck Broyles	9-0-0
2003	Mid-America Intercollegiate Athletics Association (tied with Central Missouri, Emporia State, Missouri Western, NW Missouri State)	Chuck Broyles	7-2-0
2001	Mid-America Intercollegiate Athletics Association	Chuck Broyles	8-1-0
1996	Mid-America Intercollegiate Athletics Association (tied with NW Missouri State)	Chuck Broyles	8-1-0
1995	Mid-America Intercollegiate Athletics Association	Chuck Broyles	9-0-0
1994	Mid-America Intercollegiate Athletics Association	Chuck Broyles	9-0-0
1992	Mid-America Intercollegiate Athletics Association	Chuck Broyles	9-0-0
1991	Missouri Intercollegiate Athletic Association	Chuck Broyles	8-0-1
1990	Missouri Intercollegiate Athletic Association	Chuck Broyles	9-0-0
1989	Missouri Intercollegiate Athletic Association	Dennis Franchione	10-0-0
1988	Central States Intercollegiate Conference	Dennis Franchione	7-0-0
1987	Central States Intercollegiate Conference	Dennis Franchione	7-0-0
1986	Central States Intercollegiate Conference	Dennis Franchione	7-0-0
1985	Central States Intercollegiate Conference	Dennis Franchione	6-1-0
1982	Central States Intercollegiate Conference (tied with Nebraska-Kearney)	Bruce Polen	6-1-0
1981	Central States Intercollegiate Conference	Ron Randleman	7-0-0
1979	Central States Intercollegiate Conference (tied with Nebraska-Kearney)	Ron Randleman	6-1-0
1970	Rocky Mountain Athletic Conference	Tom Lester	4-1-0
1966	Central Intercollegiate Conference (tied with Fort Hays State)	Carnie Smith	3-1-0
1961	Central Intercollegiate Conference	Carnie Smith	5-0-0
1957	Central Intercollegiate Conference	Carnie Smith	5-0-0
1955	Central Intercollegiate Conference	Carnie Smith	5-0-0
1951	Central Intercollegiate Conference (tied with Emporia State)	Carnie Smith	4-1-0
1949	Central Intercollegiate Conference (tied with Washburn)	Carnie Smith	5-1-0
1942	Central Intercollegiate Conference	Charley Morgan	5-0-0
1941	Central Intercollegiate Conference	Charley Morgan	3-1-0
1935	Central Intercollegiate Conference (tied with Fort Hays State, Wichita State)	"Blue" Howell	3-1-0
1924	Kansas Intercollegiate Athletic Conference	Garfield W. Weede	5-0-1
1919	Kansas Intercollegiate Athletic Conference (tied with College of Emporia)	Garfield W. Weede	5-0-1



**TACO
BELL®**

PROUD TO SUPPORT PITTSBURG STATE UNIVERSITY

**GORILLA
ATHLETICS**

• COME VISIT US AT 1115 S. BROADWAY •

2013 PITT STATE FOOTBALL

GORILLA FUND

The Gorilla Fund is the name established in 2011 for the program previously referred to as the Scholarship & Fund Drive and encompasses all components of the annual fund drive which supports not only scholarships but many other needs and costs that continue to rise annually and are essential for athletic and academic success.

With the exception of major gifts for programs and facilities, the Gorilla Fund combines all annual fundraising efforts into one overall program. Each year revenue goals are established for each of the Gorilla Fund components resulting in an overall annual goal for the Gorilla Fund itself. Note that this goal does not include ticket sales or parking revenue projections as those are considered "gate receipts" and represent a different revenue line item in the overall athletics budget. Other miscellaneous revenue is also considered in the overall athletics budget such as facility rental, special event revenue, camps, etc.

The Gorilla Fund consists of the following components:

- Football Season Ticket Access Program (i.e. annual Fund);
- Gorilla Nation and Gorilla Access
- Pitt Crew Youth Booster Club
- Gorilla Gala
- Program-Specific Fundraisers (e.g. hit-a-thons, lift-a-thons, golf tournaments, drawings, etc.);
- Community and Corporate Sponsorships and Partnerships;
- Merchandise and Apparel Sales (via website); and
- Program-Specific Designated/Restricted Donations.

The Gorilla Fund and its components are administered by the athletics department with assistance from the University Development staff. The Gorilla Fund Advisory Board members are listed below. This group meets annually with the athletics staff to discuss changes for the following year in terms of ticket policies and prices, parking and tailgating policies and enhancements, ticket access donation levels, etc. A special thanks to these individuals for their time and effort to advance the athletics program.

Joe Beitzinger
Steve Beykirch
Mike Carpenter
Dennis Gatewood
Wayne Gilmore
Brian Jones

Mike Lewark
Todd McKnight
Brian Pinamonti
Bob Stefanoni
Corey Williams

In an effort to not omit any donors and participants and so that the list can be kept fresh and current, a listing of donors does not appear in the game program as it would be immediately obsolete. A current list of all of those individuals and businesses who support the Gorillas through donations and gift-in-kind contributions can be found online at:

www.pittstategorillas.com/giving

Visit that site to find a list of donors and partners of many components of the Gorilla Fund.

2013 PITT STATE FOOTBALL

ENDOWMENT FOR EXCELLENCE IN ATHLETICS PROGRAM

From 1987-2012, the Endowment for Excellence in Athletics was a special program initiative to increase support for athletic scholarships. Local businessman and ardent Pitt State Athletics supporter Wayne Allai initiated this outstanding program, which has guaranteed crucial financial support for Gorilla teams for the past quarter century.

Wayne, a 1994 inductee into the PSU Athletics Hall of Fame for Meritorious Achievement, passed away on March 5, 2003. Wayne's wife, Jan, and long-time Endowment supporter A.J. Menghini carried on the oversight of the Endowment for Excellence in Athletics program following his passing.

Thanks to Wayne Allai's vision, Pittsburg State University student-athletes will continue to benefit from the generosity of the Endowment for Excellence in Athletics donors listed below:



Adrian Bank — Gene Irvin

Wayne * & Jan Allai

Dr. & Mrs. W. Wesley Allai

Dr. & Mrs. James M. AuBuchon

Mr. & Mrs. George M. Barberich

Mr. & Mrs. James L. Barone

Mr. Charles (Ted) Barnard *

Ray * & Carolyn Barto

Dr. & Mrs. Kenneth K. Bateman

Tim & Gena Beck

Joe & Christl Beitzinger

Mr. & Mrs. Jim Bishop

Dr. & Mrs. Thomas W. Bryant

Leroy & Elaine Castagno

The Joe Castelli Family

Mr. & Mrs. Paul R. Chappell

Elmer * & Virginia L. Christy

Mr. & Mrs. Gary J. Cinotto

Homer & Evelyn * Cole

Mr. & Mrs. Gene Corsini

Moe & Anita Cotter

Mr. Lee Crawley

Jack & Janet Cremer *

Mr. & Mrs. J.S. Crutcher

Bill * & Barb Darland

William L. Dillion, M.D.

Mr. & Mrs. Roger E. Doue

Mr. & Mrs. Barry D. Draper

Mr. & Mrs. Gordon W. Elliott

Mr. & Mrs. Peter J. Farabi

Mr. & Mrs. Daniel J. Farrell

Judi & Mike Fast

George * & Earleen Fauvargue

Mr. & Mrs. Bill Fowler *

Mr. F. David Fowler

Mr. & Mrs. Joe Fowler

The Fowler Family

Mr. Peter W. Giddings *

Mr. Martin Golob * &

Ms. Karenjo Golob Heronemus

George & Marelu * Graham

Joe & Debra Grisolano

Lebro & Jeanne Grisolano *

Dr. Robert V. & Patty * Haderlein

Bill & Avys Hagman *

Kenneth * & Linda Hagman

Mr. & Mrs. Harlan L. Hess

Clyde F. * & Eda R. Hobson

Dr. & Mrs. Donald M. Holsinger

Mr. Henry Jelochan *

Leon & Marie Jursche *

Dr. John & Patricia * Kazmierski

John & Rosie Levrá

Mike & Shirley Loy *

Mr. & Mrs. Brad J. Mattivi

Mr. & Mrs. A.J. Menghini

Peter & Maralyne Monsour *

Owen "Cobb" & Irma O'Hara *

Robert * & Betty Osborn

Mr. & Mrs. Bill M. Rink *

Jack * & Yvonne Robertson

August * & Helen Rua

Mr. & Mrs. David A. Rua

Mr. & Mrs. Raymond M. Ryan

Mr. Fred J. Spigarelli

Mrs. Emily Lu Stocker

Maj. Gen. (Ret) & Mrs. Jack Strukel, Jr.

Mr. & Mrs. Charles Sturdevant

Mr. & Mrs. Robert Terlip *

Mr. & Mrs. J.B. Townner

Mr. & Mrs. David Utermoehlen

Mrs. Vera Vinze *

Earl & Betty Ward

Chris White

Mr. & Mrs. George A. Zugmierz

* deceased

2013 PITT STATE FOOTBALL

FOOTBALL LETTERMEN'S FUND DONORS (AUG. 1, 2012 - AUG. 15, 2013)

The following individuals or businesses made contributions to the PSU Football Lettermen's Fund &/or the 2013 Gorilla Golf Invitational between Aug. 1, 2012, & Aug. 15, 2013.

Adrian Bank
Mrs. Janette Allai
Mr. & Mrs. Robert D. Allen
American Football Coaches Foundation
Apollo Surgical Group LLC
Arma Drug, Inc.
Mr. Wesley P. Baker
Mr. & Mrs. Don W. Barcus
Brian Barta
Mrs. Ruth A. Beal
Gerald O. Beaman
Mr. & Mrs. Paul E. Beck
Mr. Joe A. Beitzinger
Mr. Steve F. Beykirch
Mr. Leonard E. Bierman
Mr. John A. Britton
Roy & Wanda Cagle
Mr. & Mrs. John A. Calo
Carter Company
Mr. Eric W. Clawson
Coldwell Banker Jim Bishop & Associates
Mr. John C. Collar
Richard Emmett Collier
Colliver Amati Consulting
Coleman Family Foundation, Inc.
Commerce Bank
Mr. Jim F. Conrad
Alfred Eugene Corsini
Mr. & Mrs. Maurice H. Cotter
Mr. Gerald Creed
Crossland Construction Company, Inc.
Daino Properties
Mr. Eldon Danenhauer
Mr. Marc R. DeGiusti
Mrs. Jane V. Doherty
Edwards and Wilson Periodontic, PA
Eightball Productions, Inc.
J.W. Emerson
Dr. Larry Dean Evans
Billy K. Ewy
Farmers National Bank of Kansas
Fox Insurance Agency
Mattie E. Foxx
Frank Fletcher Toyota
Mr. Max C. Gallaway
Kendall Gammon
Mr. & Mrs. Tom Gosch
Mrs. Mary E. Graber

Mr. Troy L. Graham
Mr. Bob Grant
Chris M. Hall
Harry's Cafe, Inc.
Mr. Mickey L. Heatherly
Gale A. Hellwig
Mr. & Mrs. Harlan L. Hess
Mr. & Mrs. Michael A. Hessman
Mr. Harry L. Hester
Mr. & Mrs. Leroy D. Heusted
Mr. Charles F. Hinton
Mr. Alan D. Hobson
Homer Holmes
Brain Hoover
Gregory Hough
Mrs. Dee Hough
Mr. Chuck Hosman
Mr. Robert Howdeshell
Mr. Charles B. Howton
Mr. Jerry D. Hudson
Mr. Sterling D. Hudson
James Van Becelaere Company, Inc.
Jay Hatfield Chevrolet Buick Pontiac
Jim's Steak House and Lounge
Jostens, Inc.
Jostens of Southeast Kansas
Dr. Shane B. Kannarr
Mr. Tom B. Kennard
Mr. & Mrs. Larry J. Kramer
Bill Kroenke
Mr. Matt D. Lincez
The Laing Family Trust
Mr. & Mrs. John L. Levrá
Mrs. Kimberly F. Little
Mr. Jerald D. Louthan
Mr. Christopher M. Lutz
Mr. Jim L. Manley
Mr. Ken C. Manley
Mr. Timothy W. Manley
Bob Marshall
Mrs. Janet Mayhew
Mr. & Mrs. Brian E. McKenna
Mr. A.J. Menghini, Jr.
Mrs. Martha S. Miller
Miller Family Foundation, Inc.
Jeremy Moss
Mr. Steven E. Neville
Robert P. Numrich
Mr. Jack H. Overman
Mr. Joshua A. Paoni
Parsons Farms, LLC
Mr. Christopher S. Patterson
Mr. Albert L. Phillips
Scot Phillips

Mr. & Mrs. John W. Pierce
Pitt Discount Liquor
Mr. Mark A. Plummer
PMG Solutions, LLC
Mrs. Diana R. Polston
Mr. Doug Potts
Mr. Bill C. Presson
Mrs. Martha M. Puskas
Germaine N. Race
Mrs. Janet K. Rexwinkle
John R. Rexwinkle
Richard E. Collier Living Trust
John Roderique
Mr. & Mrs. Carl E. Roth
S. E. Dental
Mrs. Jeannie L. Saenz
Mr. Albert L. Schmidt
Mr. Donnell J. Schwarz
Mr. Brett A. Shamblin
Shepherd Of The Hills Historical Society, Inc.
Mr. Eric J. Simmons
Michael W. Slaven
Mark Smith

Mrs. Margaret Stahura
State Farm Insurance Company
Mr. Samuel M. Steele, Jr.
Mr. Robert F. Stringer
Mr. Christopher L. Swartz
Tanner's Bar and Grill
Triple T Foods, Inc.
University Bank
Mr. Vince J. VanBecelaere
Mr. Ron Vignery
Mr. Phil J. Vogrin
A.J. Wachter
Mr. Dustin W. Walters
Mike Ward
Walco Companies, Inc.
Mr. Robert L. Wilbert
April & Dan Wilkes
Mr. Wendell L. Wilkinson
Mr. Ben B. Witty
Mr. John W. Woody
Ken Yoss
Mr. Wayne J. Young

Vital Signs

SIGN COMPANY
866.240.SIGN
PROUDLY SUPPORTS *Pitt State* FOOTBALL



○ SIGNS OF ALL KINDS
○ DIGITAL SIGNS
○ VEHICLE WRAPS
○ BANNERS

Owned and Operated
by
Pitt State Alumni

Your Full Service Sign Company

2013 PITT STATE FOOTBALL

ATHLETIC SCHOLARSHIPS

8993 Football Scholarship	Jesse Eastman Basketball Scholarship	Will Miller Baseball Scholarship
Joseph R. Adams III Scholarship	Gordon & Beverly Elliott Athletic Scholarship	J & J Miranda Football Scholarship
Christie Allen-Logue Scholarship	Naomi Farabi Women's Basketball Scholarship	Peter T. & Maralyne Monsour Athletic Scholarship
Wayne Premo & Jan Allai Athletic Scholarship	James L. Farley Football Scholarship	Brian Moorman Football Scholarship
Wes & Brenda Lee Allai Football Scholarship	Lon Farrell Football Scholarship	William Mounkes Football Scholarship
Anonymous Athletic Scholarship	Vince Fast Athletic Scholarship	Joe Murphy Football Scholarship
Athletic Endowment Scholarship	Bill & Wadean Fowler Football Scholarship	Mathilde A. Netteis Scholarship
Jim & Cathy AuBuchon Athletic Scholarship	David Fowler Scholarship	R.A./Z.C. Norris Scholarship
George & Linda Barberich Football Scholarship	Joe & Suzie Fowler Football Scholarship	Robert & Betty Osborn Men's Basketball Scholarship
Ted Barnard Scholarship	John T. Fowler Scholarship	Pepsi Bottling Co. of Pittsburgh &
J.L. & Donita A. Barone Football Scholarship	Peter W. & Virginia L. Giddings Athletic Scholarship	Ron's Supermarket Football Scholarship
Ray & Carolyn Barto Women's Basketball Scholarship	Martin T. & Karenjo Golob Heronemus	James R. Peterson Football Scholarship
Kenneth K. & Barbara A. Bateman Scholarship	Football Scholarship	Thelma Fowler Renfro Scholarship
Ralph M. & Mary Alice Bateman Scholarship	George & Marelou Graham Athletic Scholarship	Tommy Riggs Memorial Scholarship
Carl Beard Scholarship	Joe & Debbie Grisolano Scholarship	Bill M. & Edna M. Rink Football Scholarship
Arthur & Carmen Beasley Scholarship	Lebro (Lee) Grisolano Memorial Scholarship	Yvonne & Jack Robertson Athletic Scholarship
Tim & Gena Beck Football Scholarship	P & G Gudgen Scholarship	August & Helen L. Rua Athletic Scholarship
Joe & Christl Beitzinger Athletics Scholarship	Dr. & Mrs. R.V. Haderlein Scholarship	Mr. & Mrs. David Rua of Pittsburg Kansas Scholarship
E Bezinque Memorial Scholarship	Ken & Linda Hagman Football Scholarship	Bill Russell Baseball Scholarship
Jim & Nancy Bishop Football Scholarship	William & Avys Hagman Scholarship	Ray & Zoe Ann Ryan Football Scholarship
G & J Brenner Scholarship	Eric Hendrick Football Scholarship	Ernest Schmidt Basketball Scholarship
Lavon Brosseau Men's Basketball Scholarship	Harlan L. & Carol Billington Hless Scholarship	Carnie & Cora Smith Football Scholarship
Carl Broyles Scholarship	Clyde F. & Eda R. Hobson Scholarship	Fred Spigarelli Athletic Scholarship
Kyle K.B. Broyles Scholarship	Bill E.W. Hollenbeck Football Scholarship	Michael Spigarelli Football Scholarship
Max Broyles Football Scholarship	Don & Kay Holsinger Scholarship	Emily Lu Stocker Gorilla Pride Scholarship
Tom W. & Koeta Bryant Athletic Scholarship	Brad G. Holt Football Scholarship	Jack & Gayle Strukel Athletic Scholarship
Capital Campaign Fund Athletic Scholarship	Brian Hutchins Scholarship	Charles & Patricia Sturdevant Athletic Scholarship
Ted Carnino Basketball Scholarship	A.E. Irvin Football Scholarship	L B/R K Swisher Scholarship
Leroy & Elaine Castagno Football Scholarship	Henry W. Jelochan Athletic Scholarship	Tau Kappa Epsilon, Delta Mu Chapter Athletic Scholarships
Joseph G. Castelli Football Scholarship	Bob Johnson Men's Basketball Scholarship	TeamKong.net Scholarship
Paul & Brenda Rua Chappell Football Scholarship	Leon & Marie Jursche Scholarship	Jack Templin Volleyball/Track Scholarship
Elmer & Virginia Christy Football Scholarship	Kansas City Gorilla Club Scholarship	Bob Terlip Athletic Scholarship
Gary & Margaret Cinotto Scholarship	John Patrick Kazmierski &	Dick Terwiliger Track Scholarship
Evelyn M. Cole Women's Basketball Scholarship	Dr. Lynn Wuthnow Athletic Scholarship	Mr. & Mrs. J.B. Towner Scholarship
Homer G. & Evelyn M. Cole Men's Basketball Scholarship	Taylor Kemp "Spirit" Scholarship	David C. Utermoehlen Golf Scholarship
Corsini Athletic Scholarship	John Lance Basketball Scholarship	Mack & Vera (McNamee) Vinze Scholarship
Moe & Anita Cotter Scholarship	Tom Lester Football Scholarship	Earl & Betty Ward Scholarship
Lee & Ann Crawley Men's Basketball Scholarship	John Levra Football Scholarship	Karen F. Webb Women's Scholarship
Jack & Janet Cremer Athletic Scholarship	Mike & Shirley Loy Athletic Scholarship	Garfield Weede Track Scholarship
James (Tex) & Audrey Crutcher Football Scholarship	Brad & Gail Mattivi Athletic Scholarship	Cecil & Eva Wilkinson Men's Basketball Scholarship
Dale's Sports Scholarship	Harry McDonald Scholarship	Joe Winchester Men's Cross Country Scholarship
Bill & Barb Darland Football Scholarship	Glen & Darlene McLaren Scholarship	Winfield Scholarship
William L. Dillon Scholarship	AJ & Shirley Menghini Scholarship	George & Nancy Zugmire Athletic Scholarship
Dole Football Scholarship	Anthony Menghini, Jr. Football Scholarship	
Roger E. & Agnes Doue Football Scholarship	Tom & Martha Miller Football Scholarship	
Barry & Joyce Draper Scholarship	W. & D. Miller Scholarship	

Which regional university's business college is listed among the most family friendly schools in the nation?



1. Brigham Young University
2. Dartmouth College
3. Indiana University – Bloomington
4. Pennsylvania State University
5. **Pittsburg State University**
6. College of William and Mary
7. University of Notre Dame
8. Duke University
9. Cornell University
10. University of California – Berkeley

Source: *The Best 296 Business Schools, 2013 Edition*.
Framingham, Mass., The Princeton Review, Inc., page 58.

- In 2010, *Entrepreneur Magazine* ranked the Kelce MBA programs in Accounting and Marketing/Management in the national top 15 for student satisfaction.
- Kelce is consistently named one of the "Best Business Schools" in the nation by *The Princeton Review*.
- The Kelce Enactus student team placed 16th in the 2012 Students in Free Enterprise national exposition and competition.

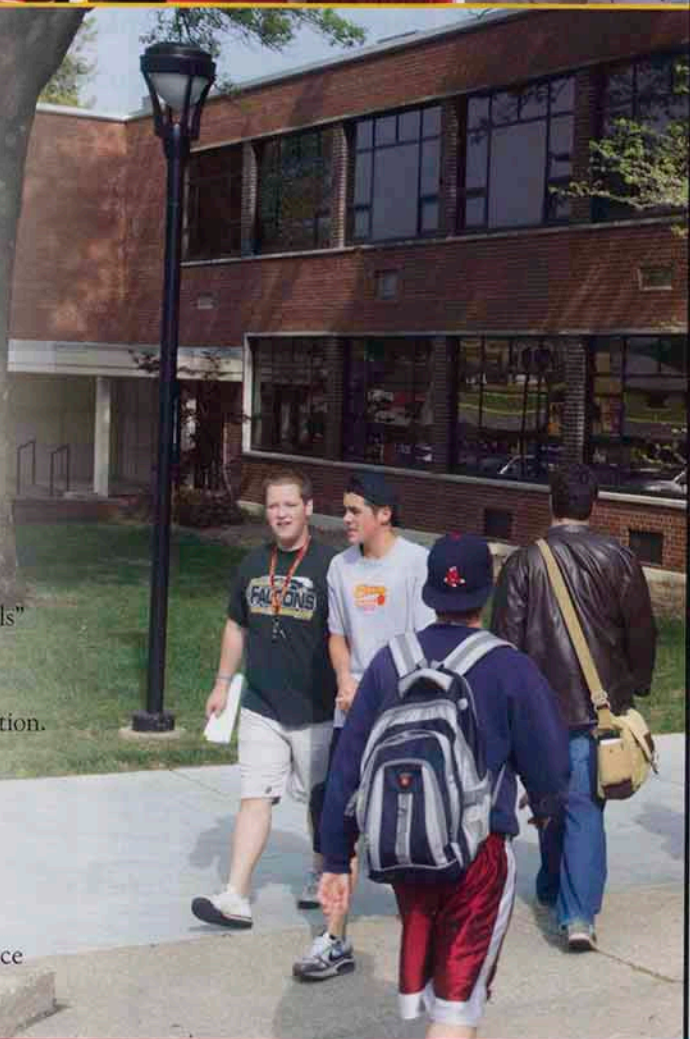


KELCE
COLLEGE OF BUSINESS

Pittsburg State University

national recognition • personal attention • academic excellence

www.pittstate.edu/cob



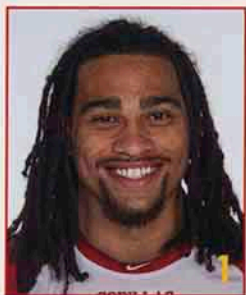
Visit with Kelce alumni and friends at our hospitality tent before the Family Day (September 21) and Homecoming (October 5) games!

NO. 1 AGAIN

Once again, Freeman Health System ranks as the No. 1 hospital in southwest Missouri by US News & World Report. In addition to receiving high-performing designation in seven specialties, **Freeman was also ranked No. 4 in the state for a second consecutive year.** Such an honor can only be attributed to the caring spirit of our staff, whose compassion knows no bounds, and the loyalty of our patients, whose desire to overcome life's challenges inspires us daily. Thank you for making Freeman the best place to give and receive care.



2013 PITT STATE FOOTBALL



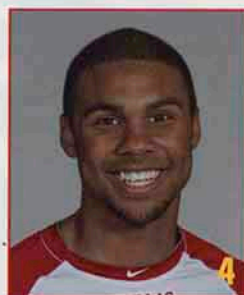
JEFF SEYBOLD, JR.
5-11 • 208 • SO • RB
Lincoln, Neb.



ISRAEL MASELERA
5-8 • 158 • SR • CB
Glenpool, Okla.



DARRACK HARGER
6-4 • 222 • SO • QB
Sand Springs, Okla.



JASON PEETE
6-3 • 191 • JR • S
Olathe, Kan.



JOHN BROWN
5-11 • 170 • SR • WR
Homestead, Fla.



ROBERT MCFIELD
6-6 • 268 • JR • DE
St. Louis, Mo.



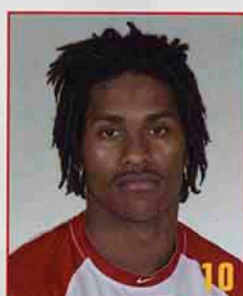
RAMSEY HAMILTON
6-2 • 200 • FR-RS • QB
Beggs, Okla.



ARIES HERRION
5-10 • 172 • JR • CB
Tulsa, Okla.



MARQUISE CUSHON
5-10 • 156 • SO • WR
Kansas City, Mo.



DENNIS TANNER, JR.
6-3 • 182 • JR • S
Kansas City, Mo.



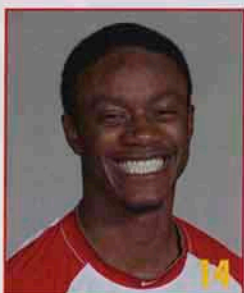
NATE DREILING
6-4 • 226 • SR • LB
Hutchinson, Kan.



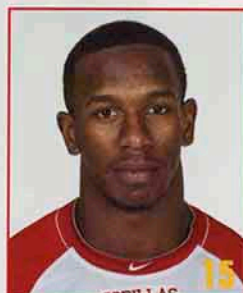
ANTHONY ABENOJA
6-3 • 210 • JR • QB
Overland Park, Kan.



CONNOR FRAZELL
5-10 • 183 • JR • PK
Iola, Kan.



DEVANTE BAUSBY
6-2 • 164 • JR • CB
Kansas City, Mo.



ISAAC MASELERA
6-0 • 181 • JR • S
Glenpool, Okla.



HERMAN MING
6-2 • 190 • SO • WR
Kansas City, Kan.



LEVI KUNTZSCH
6-5 • 211 • SR • WR
Scott City, Kan.



GAVIN LUTMAN
6-4 • 201 • JR • WR
Peculiar, Mo.



KEESTON TERRY
6-3 • 198 • JR • S
Blue Springs, Mo.



ANDRE TAYLOR
5-9 • 178 • JR • WR
St. Petersburg, Fla.



PITTSBURG FORD

1097 S. Hwy 69 • (620) 231-2450



proud members of the
Gorilla Courtesy Car Program

2013 PITT STATE FOOTBALL



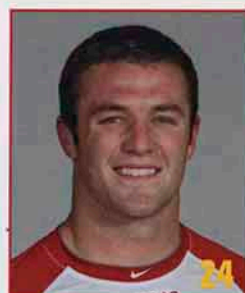
DINO TEAGUE
6-0 • 172 • SO • CB
Tulsa, Okla.



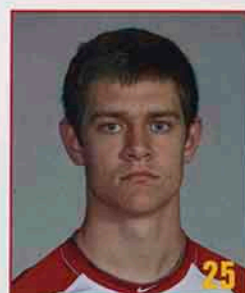
MASON SNOW
6-0 • 167 • FR-RS • WR
Bentonville, Ark.



SOLOMON WATKINS
5-10 • 190 • SR • RB
Sedalia, Mo.



TYLER DISNEY
6-1 • 214 • JR • LB
Stilwell, Kan.



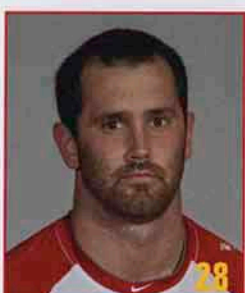
SCOTT RODERIQUE
6-0 • 184 • SO • S
Webb City, Mo.



JAMES CAINE
5-11 • 180 • SR • CB
St. Louis, Mo.



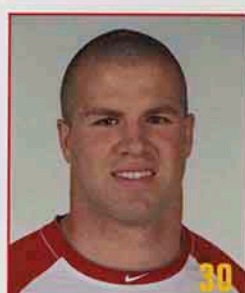
MARKELL WHITE
5-9 • 185 • FR-RS • RB
Lamar, Mo.



JOE WINDSCHEFFEL
6-3 • 228 • SR • LB
Smith Center, Kan.



STEVEN SULLIVAN
5-10 • 180 • FR-RS • RB
Blue Springs, Mo.



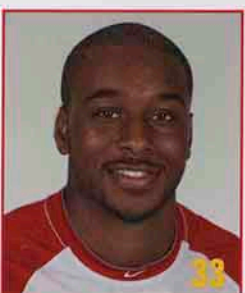
SCOTT LESTER
6-0 • 224 • SR • RB
Andale, Kan.



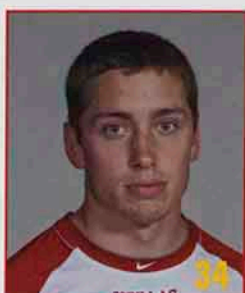
JARED VINOVERSKI
6-3 • 210 • SR • S
Lawrence, Kan.



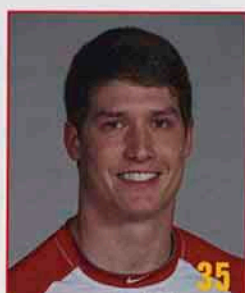
QUAD WARE
6-0 • 192 • FR-RS • S
Broken Arrow, Okla.



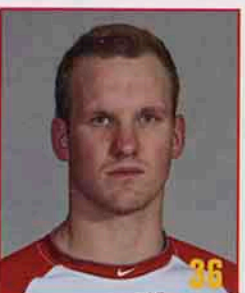
QUANDRE HOLMAN
5-9 • 209 • FR-RS • RB
Oklahoma, City, Okla.



BRIAN POSTON
6-0 • 208 • SO • RB
Carthage, Mo.



DANIEL RANK
5-8 • 169 • SR • WR
Arma, Kan.



AUSTIN LEAKE
6-1 • 201 • SR • S
Independence, Kan.



JIMMY WASHINGTON
5-11 • 170 • FR-RS • CB
Wichita, Kan.



CHRIS HEFFERN
5-10 • 180 • JR • S
Iola, Kan.

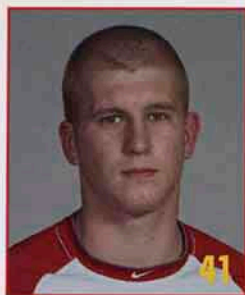


SKYLARR GATSON
5-11 • 189 • FR-RS • S
Wichita, Kan.



TAYLOR COUNTS
5-11 • 213 • SR • RB
Salina, Kan.

2013 PITT STATE FOOTBALL



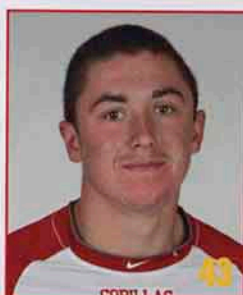
LUKE CATLOTH

6-1 • 179 • SR • WR
Olathe, Kan.



KYLER THOMPSON

6-3 • 225 • JR • DE
Lallarpe, Kan.



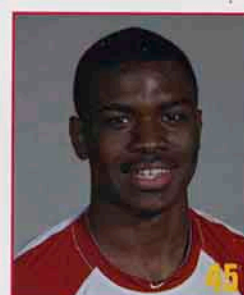
AUSTIN PANKO

6-0 • 177 • FR-RS • WR
Lee's Summit, Mo.



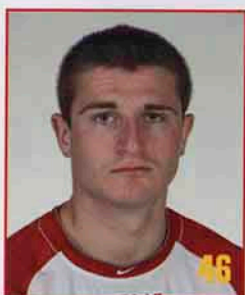
STEPHEN POSTON

6-3 • 220 • SR • WR
Carthage, Mo.



DERON WASHINGTON

6-1 • 191 • SO • S
Raymore, Mo.



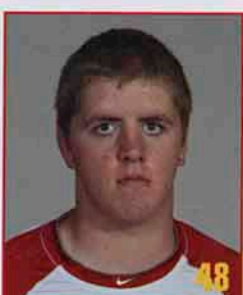
CHAD LEVIN

5-8 • 160 • FR-RS • PK
Bentonville, Ark.



GRIFFIN KNOPP

6-3 • 178 • JR • WR/P
Fort Scott, Kan.



ALEX HOWDESHELL

6-1 • 238 • SO • LS
Lee's Summit, Mo.



TIMMY CHADD

5-10 • 204 • SO • LB
Wichita, Kan.



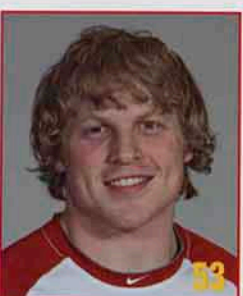
COLBY HALL

5-10 • 192 • SO • LB
Lamar, Mo.



ERIC BRANTLEY

5-11 • 189 • SO • LB
Kansas City, Mo.



DYLAN CASE

5-10 • 204 • SO • LB
Lee's Summit, Mo.



SPENCER BROWN

5-11 • 204 • FR-RS • LB
Lee's Summit, Mo.



HEATH WILSON

6-3 • 250 • FR-RS • DE
Wagoner, Okla.



BLAKE WOELLHOF

6-2 • 210 • FR-RS • LB
Concordia, Kan.



LEWIS FOUTZ

6-3 • 227 • SO • DE
Blue Springs, Mo.



ZACH BURKHART

6-3 • 293 • JR • OL
Mulvane, Kan.



JAKE WALL

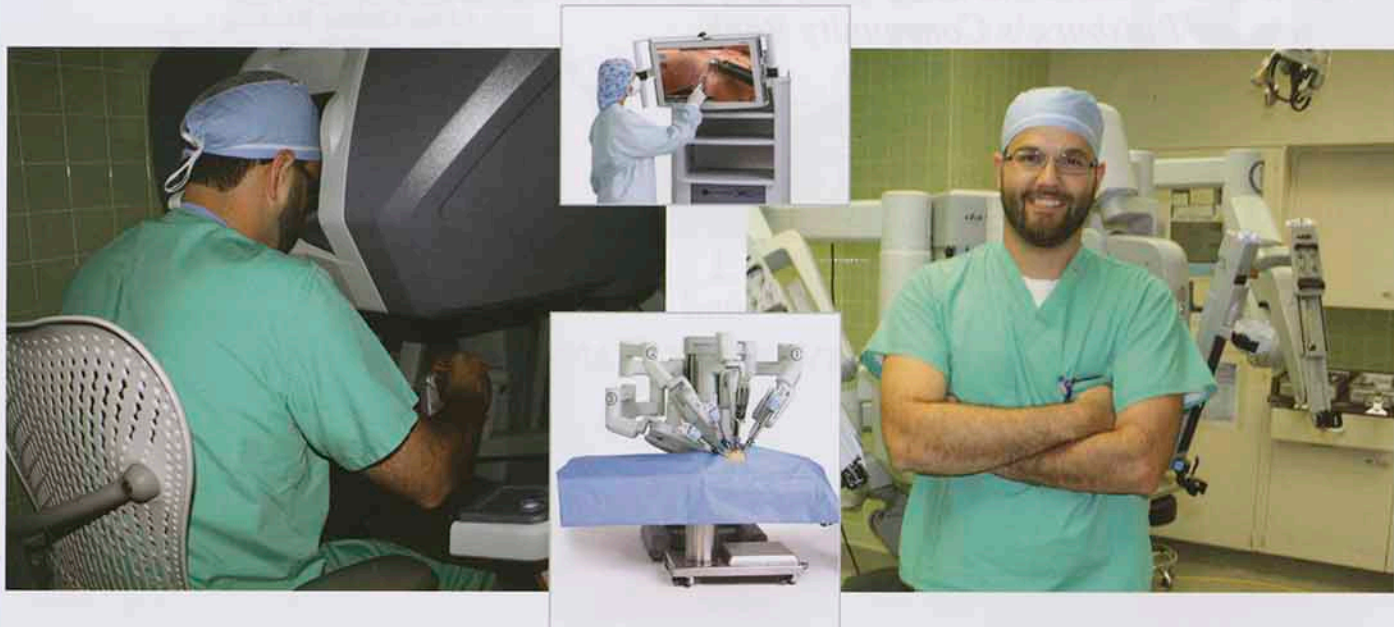
6-1 • 253 • FR-RS • OL
Carl Junction, Mo.



CORY PHILLIPS

6-4 • 309 • SO • OL
Blue Springs, Mo.

Leading the way...



Via Christi Hospital Pittsburg, Inc. is ushering our community into 21st century medical technology history with revolutionary robotic assisted surgery. The first ever surgery of its kind performed in southeast Kansas took place August 15, 2013, by Via Christi Hospital ob/gyn Dr. Michael Fenech using the da Vinci Surgery System. Minimally invasive surgery can mean shorter hospital stays and a quicker recovery, returning you to the activities and people you love.



Proud Supporter of Pitt State Football

UNIVERSITY BANK

Pittsburg's Community Bank



and
**UNIVERSITY BANK
ARMA**

Two Great Locations To Serve You!

• SAFE • SECURE • SOUND

Full Service Banking

- Free Checking
- Free Online Banking
- Free ATM Debit Card
- Full Service Brokerage Available
- Very Competitive CD Rates

We Invest In Our Communities

- Home Loans
- Refinancing an Existing Mortgage
- Home Equity Loans
- Commercial and Agricultural Loans
- Installment Loans

**All Loan/Borrowing Decisions
Are Made Locally**



1206 S. Broadway
(620) 231-4200
www.ubpittsburg.com



501 E. Washington
(620) 347-4862
www.ubarma.com



CRIMSON VILLAS

AT ROUSE CROSSING



1904 S. Rouse
Pittsburg, KS 66762

620-875-3730

facebook.com/crimsonvillas
crimsonvillas.com

Amenity Rich Student Living!

Sparkling Pool, Free Tanning, 24 Hour Laundry and Fitness Center, Controlled Access, On-Site Maintenance and Management Team, High-Speed Internet, Great Location, On PACT Bus Route

"We're the Gorillas from the Villas..."

Produce More
Conserve More
Improve Life

MONSANTO



CHATTERS

grill

KITCHEN:

Sun-Thurs 11 AM - 10 PM
Fri-Sat 11 AM - 11 PM

BAR:

Mon-Sun 11 AM - 2 AM

**NOW SERVING BREAKFAST EVERY WEEKEND
7:30 AM - 2 PM**



OVER 20 BOLD FLAVORS

HOURS: Mon-Sun 11 AM - 12 AM

**2401 South Rouse • Pittsburg, KS
(620) 232-7277 • chattersgrill.com**

**Follow us on Facebook:
www.facebook.com/HouseOfWings**

#chatterslife

2013 PITT STATE FOOTBALL

No. 21 PITTSBURG STATE

[0-0, 0-0 MIAA]

VERSUS

NORTHEASTERN STATE

[0-0, 0-0 MIAA]



TONIGHT'S GAME OFFICIALS: DANNY HARRIS (REFEREE), B.J. MOORE (UMPIRE), BILL CANNAWAY (HEAD LINESMAN), BEN TENPENNY (LINE JUDGE), MIKE BLOCK (FIELD JUDGE), T.L. PRICE (SIDE JUDGE), JEFF PASOLD (BACK JUDGE)

PITTSBURG STATE [0-0, 0-0 MIAA]

87	NORTHEASTERN STATE *	7 p.m.
614	at Central Oklahoma *	6 p.m.
621	SOUTHWEST BAPTIST *	7 p.m.
628	at Lincoln *	2 p.m.
635	ABILENE CHRISTIAN	2 p.m.
612	at Central Missouri *	1:30 p.m.
619	vs. No. 4 Northwest Missouri *	3 p.m.
626	at No. 6 Missouri Western *	1:30 p.m.
62	Northwestern Oklahoma	2 p.m.
69	at Lindenwood *	2:37 p.m.
616	MISSOURI SOUTHERN	2 p.m.

* MIAA game



Welcome to Brandenburg Field/Carnie Smith Stadium for tonight's 2013 Mid-America Intercollegiate Athletics Association season opener between Pittsburg State University and Northeastern State University.

Pittsburg State, the winningest all-time NCAA Division II program, returns 15 starters from a 2012 squad that posted a 7-3 overall record. The Gorillas enter the 2013 season as the preseason No. 21 team in the AFCA/Division II Top 25 poll.

Northeastern State also returns 15 starters from its 2012 squad. The RiverHawks posted a 4-6 record in their initial campaign as members of the MIAA. NSU closed out the season with four straight wins, after opening the season 0-6 a year ago.

NORTHEASTERN STATE [0-0, 0-0 MIAA]

87	at No. 21 Pittsburg State *	7 p.m.
614	MISSOURI SOUTHERN *	2:30 p.m.
621	WASHBURN *	6 p.m.
628	at Emporia State *	1 p.m.
635	No. 4 NORTHWEST MISSOURI *	2 p.m.
612	at No. 6 Missouri Western *	1:30 p.m.
619	EASTERN NEW MEXICO	2 p.m.
626	at Central Missouri *	1:30 p.m.
62	SOUTHWEST BAPTIST *	2 p.m.
69	at Lincoln *	2 p.m.
616	CENTRAL OKLAHOMA *	1 p.m.

* MIAA game

MIAA STANDINGS

W Missouri State (4)	0-0	0-0
Missouri Western (6)	0-0	0-0
Pittsburg State (21)	0-0	0-0
Central Missouri	0-0	0-0
Central Oklahoma	0-0	0-0
Emporia State	0-0	0-0
Fort Hays State	0-0	0-0
Lincoln	0-0	0-0
Missouri Southern	0-0	0-0
Nebraska-Kearney	0-0	0-0
Northeastern State	0-0	0-0
Southwest Baptist	0-0	0-0
Washburn	0-0	0-0

This Week's Action

Thursday, September 5

UCO @ MSSU, 6 p.m.
 SWSU @ NWMSU, 6:30 p.m.
 CSU @ FHSU, 7 p.m.

Saturday, September 7

NSU @ PSU, 7 p.m.

WU @ UNK, 6 p.m.
 MWSU @ UCM, 7 p.m.
 LU @ LWU, 7 p.m.

SBU @ TSU, 7 p.m.

THE COACHES



Tim Beck begins his fourth season as head coach at Pitt State. Beck, who has compiled a **26-10 (.722)** career record, led his alma mater (PSU, '88) to the 2011 NCAA Division II National Championship, earning national coach of the year honors from Liberty Mutual, the Don Hansen Football Committee and FieldTurf™.

Beck became the school's 14th all-time head football coach in December 2009, after serving for 23 seasons as an assistant coach for the Gorillas including 16 years as the team's offensive coordinator from 1994-2009.

In 2011, Beck led the Gorillas to the program's second NCAA national championship and the school's fourth national title overall in a 13-1 campaign. Pitt State captured the MIAA Championship and ultimately the NCAA-II National Championship with a 35-21 victory over Wayne (Mich.) State on Dec. 17, 2011.

This will be Beck's second meeting vs. the RiverHawks. He is 1-0 vs. Northeastern State.

Northeastern State's **Kenny Evans** is in his sixth year as head coach leading his alma mater. Evans (NSU, '82) has compiled a **20-35 (.364)** overall record for the RiverHawks.

THE PITT STATE-NORTHEASTERN STATE SERIES

This will be the 29th all-time meeting between the Gorillas and the RiverHawks in a series that dates back to the 1912 season.

Pitt State holds a slight **14-12-2** advantage in the series. The Gorillas have won the only two contests between the two schools since 1970.

Pitt State posted a 41-20 victory over NSU in the 2012 season opener at Tahlequah, Okla., on Aug. 30. Sophomore quarterback Tony Abenoja, making his first start under center for the Gorillas, passed for a school record 378 yards and two touchdowns in the contest.

Abenoja connected with junior wide receiver John Brown nine times in the contest for 140 yards and a pair of scores. Brown compiled 270 all-purpose yards in the game, including returns.

Abenoja earned MIAA Offensive Player of the Week honors following the contest, while Brown garnered MIAA Special Teams Player of the Week recognition.

[game notes continued on page 32]

2013 PITT STATE FOOTBALL

2013 NCAA DIVISION II TOP 25 POLL [RELEASED AUG. 18, 2013]

School (1st votes)	2012 W-L	Pts.	Prev.	Season Opener	Next Game
1. Valdosta State (26)	12-2	766	1	Sept. 7 vs. Fort Valley State	Sept. 21 vs. Shorter
2. Minnesota State (3)	13-1	726	3	Sept. 7 at Mary (N.D.)	Sept. 14 vs. Minnesota-Crookston
3. West Texas A&M (1)	12-3	707	4	Sept. 7 at Western State	Sept. 14 vs. No. 20 Chadron State
4. Northwest Missouri State (1)	10-3	616	10	Sept. 5 vs. No. 22 Saginaw Valley State	Sept. 14 vs. Central Missouri
5. Winston-Salem State	14-1	599	2	Sept. 5 at North Carolina-Pembroke	Sept. 14 vs. Virginia-Lynchburg
6. Missouri Western	12-2	586	5	Sept. 5 at Central Missouri	Sept. 14 vs. Missouri S&T
7. Shippensburg (Pa.)	11-2	559	14	Sept. 7 at No. 25 Shepherd (W. Va.)	Sept. 14 at Slippery Rock
8. Colorado State-Pueblo	12-1	522	6	Sept. 7 at Northern Colorado	Sept. 14 vs. Angelo State
9. Ashland	11-1	506	9	Sept. 7 at No. 19 Indianapolis	Sept. 14 at Wayne State (Mich.)
10. Indiana (Pa.) (1)	12-2	416	7	Sept. 7 at Southern Connecticut State	Sept. 14 vs. Cheyney
11. Minnesota-Duluth	10-2	410	12	Sept. 7 vs. Sioux Falls (S.D.)	Sept. 14 at Upper Iowa
12. New Haven	10-1	407	8	Sept. 7 at West Chester	Sept. 14 vs. Pace
13. Henderson State	10-1	371	11	Sept. 7 vs. Southern Nazarene	Sept. 14 vs. McKendree
14. Grand Valley State	8-3	361	NR	Sept. 7 vs. Azusa Pacific	Sept. 14 vs. Truman
15. Midwestern State	9-2	319	16	Sept. 14 vs. Tarleton State	Sept. 21 at West Georgia
16. West Alabama	9-4	297	21	Sept. 7 vs. Clark Atlanta	Sept. 14 at McNeese State
17. Carson-Newman	9-3	290	13	Sept. 5 vs. Wayne State (Mich.)	Sept. 14 at Colorado Mines
18. Bloomsburg	10-2	227	17	Sept. 7 vs. Stonehill	Sept. 14 at Edinboro
19. Indianapolis	10-3	212	15	Sept. 7 vs. No. 9 Ashland	Sept. 14 vs. Saint Xavier (Ill.)
20. Chadron State	9-3	195	18	Sept. 5 at Missouri S&T	Sept. 14 vs. No. 3 West Texas A&M
21. PITTSBURG STATE	7-3	165	NR	Sept. 7 vs. Northeastern State	Sept. 14 at Central Oklahoma
22. Saginaw Valley State	8-3	141	NR	Sept. 5 at No. 4 Northwest Missouri State	Sept. 14 vs. Malone
23. Lenoir-Rhyne	9-3	140	20	Sept. 7 vs. Concord (W. Va.)	Sept. 14 at Davidson
24. Tuskegee	10-2	124	23	Sept. 7 at Alabama A&M	Sept. 14 at Albany State
25. Shepherd (W. Va.)	8-3	108	25	Sept. 7 vs. No. 7 Shippensburg	Sept. 14 at Fairmont (W. Va.)

Others Receiving Votes: Harding, 106; Winona State, 77; Albany St. (Ga.), 51; North Alabama, 39; Michigan Tech, 38; Central Washington, 34; Central Missouri, 31; St. Cloud State, 30; Delta State, 26; American International (Mass.), 21; Charleston (W. Va.), 21; Ferris State, 21; Emporia State, 20; West Chester, 20; Hillsdale, 14; Miles, 14; Colorado Mines, 11; Elizabeth City State, 11; Mercyhurst, 11; Washburn, 8; Ohio Dominican, 6; Fort Valley State, 4; Tarleton State, 3; California (Pa.), 2; Missouri S&T, 2; New Mexico Highlands, 2; North Carolina-Pembroke, 2; Southern Arkansas, 2; Texas A&M-Kingsville, 2; Wayne State (Mich.), 1.

Plate Party with GUS!

**Celebrate Gus' 90th birthday with
HALF-OFF Gorilla license plates!**

September 7-27, 2013

Get a NEW Gorilla license plate and get **HALF-OFF** the PSU donation, **PLUS** you'll be entered to win great prizes, such as Rua Skybox tickets and PSU merchandise.

a \$15 gift to PSU will be due instead of \$30

All other state & county fees will still apply.
Regular \$30 will be due upon your 2014 renewal.

**PSU Alumni and
Constituent Relations**

620-235-4758 or
877-PSU-ALUM
www.pittstate.edu/alumni





Weir
(620) 396-8554

Parsons
(620) 421-5110

AGChoice

A DIVISION OF MFA ENTERPRISES, INC.

Hepler
(620) 368-4347

Chelsea
(918) 789-2559

Moran
(620) 237-4668



2013 PITT STATE FOOTBALL

PSU'S REGULAR SEASON SUCCESS

Pitt State has won 256 of its last 302 regular season games, posting a phenomenal **256-44-2 (.851)** mark during the past 29 seasons (1985-2013).

PSU is **142-14-1** at home, **110-22-1** on the road and **4-8-0** at neutral sites in the regular season during that span.

PITT STATE IN THE AFCA TOP 25 POLL

Pitt State has been ranked in Division II's top 10 **97 times** in the last **178 polls** and the Gorillas have been ranked in the top 25 poll in **152 of 178** weeks overall (dating back to the 1999 season).

The Gorillas were preseason ranked in the NCAA Division II top 25 for the 22nd time in the last 24 years in August when Pitt State was tabbed at No. 21.

PITT STATE ALL-TIME WINNINGEST DIVISION II PROGRAM

Pittsburg State is the all-time winningest NCAA Division II football program. The Gorillas, who are in their 105th season of intercollegiate competition, have compiled a **663-329-48 overall record**, winning 66.1 percent of their 1,040 all-time games.

Pittsburg State is one of just 18 NCAA Division II institutions to have recorded 500 all-time victories and the Gorillas are just one of three schools to have reached the 600-win plateau. Tuskegee is second on the all-time list with 640 victories, followed by Hillsdale (603), Central Oklahoma (592) and Texas A&M-Kingsville (587).

Team	Wins
1. Pittsburg State	663
2. Tuskegee	640
3. Hillsdale	603
4. Central Oklahoma	592
5. Texas A&M-Kingsville	587

(Includes games as NAIA members)

GROUND GAME PSU'S BREAD AND BUTTER...

Pitt State's success can be directly linked to its ability to rush the football.

Since the 1986 season, PSU has rushed for 200-plus yards in 278 of 330 overall games. The Gorillas have posted a **246-31-1 (.887)** record when they eclipse 200 yards rushing. Pitt State is an even more impressive **135-6-0 (.957)** when it eclipses 300 yards rushing.

By contrast, PSU is just 23-30-1 (.435) in the handful of games when it has been held below 200 yards rushing.

Since 1986, PSU has rushed the ball for the highest yardage total among all NCAA Division II programs, with **95,282 yards** (including postseason competition) for an average of **288.7** yards per game.

... BUT DON'T OVERLOOK PSU PASSING ATTACK

While it's no secret Pitt State's offensive success has been predicated on running the football, the Gorillas have unleashed a potent passing attack to compliment their stalwart running game.

Since the start of the 2004 season, the Gorillas have passed for **22,984 yards** and **169 TDs**, averaging 225.3 passing yards and 1.7 touchdown passes per game in the last 102 outings.

In 2012, quarterback Tony Abenoja established a new single-season passing record, averaging 233.0 passing yards per game. As a team, Pitt State passed for 2498 yards (249.8 ypg) and 15 touchdowns on the season a year ago.

PITT STATE DISPLAYS PROLIFIC OFFENSE

The Pitt State offense has asserted itself as one of the top units in NCAA Division II the past nine seasons (2004-12).

Pitt State's high octane "multiple choice" offense ranked either No. 1 or No. 2 nationally in both scoring and total offense in three of the last seven seasons.

In 2004, PSU staked its claim as the most prolific offense in the history of NCAA football, leading Division II in scoring (**55.8 ppg**), rushing (**354.7 ypg**) and total offense (**598.4 ypg**).

Pitt State broke the NCAA's 118-year-old all-time all division scoring record with 837 points, besting the old mark of 765 points set by Harvard in 1886. The Gorillas also broke the all-time NCAA all division records for rushing (5,320 yards) and total offense (8,976 yards) in 2004.

[game notes continued on page 35]

PITT REALTY

PASTEUR & ASSOCIATES

For All Your Realty Needs

1401 N. Broadway * Pittsburg, KS

(620) 231-0933

www.pittrealty.net

2013 PITT STATE FOOTBALL

PITT STATE ROSTER

NO	NAME	POS	HT	WT	CL	EXP	HOMETOWN	NO	NAME	POS	HT	WT	CL	EXP	HOMETOWN
1	Jeff Seybold, Jr.	RB	5-11	208	So.	1L	Lincoln, Neb.	66	Cody Carlson	LB	5-8	181	Fr.	RS	Derby, Kan.
2	Israel Maselera	CB	5-8	158	Sr.	3L	Glenpool, Okla.	67	Bo Farrow	OL	6-2	250	Fr.	HS	Broken Arrow, Okla.
3	Barrack Harger	QB	6-4	222	So.	1L	Sand Springs, Okla.	68	Boston Higgins	OL	6-3	269	Jr.	2L	Blue Springs, Mo.
4	Jason Peete	S	6-3	191	Jr.	2L	Olathe, Kan.	69	Tank Burns	DL	6-2	282	Jr.	2L	Columbus, Kan.
5	John Brown	WR	5-11	170	Sr.	2L	Homestead, Fla.								
6	Todd Freeman	QB	5-11	173	Fr.	RS	Wichita, Kan.	70	Gale Karigan	OL	6-5	268	Jr.	2L	Paola, Kan.
7	Ramsey Hamilton	QB	6-2	200	Fr.	RS	Beggs, Okla.	71	Jesse Ingle	OL	6-3	255	Jr.	TR	Valley Center, Kan.
8	Aries Herrion	CB	5-10	172	Jr.	2L	Tulsa, Okla.	72	Taylor Peak	OL	6-2	267	Sr.	1L	Girard, Kan.
9	Marquise Cushon	WR	5-10	156	So.	1L	Kansas City, Mo.	73	Ollie Venegas	OL	6-3	300	Jr.	2L	Olathe, Kan.
								74	Austin Vanderpool	LB	5-11	203	Fr.	RS	Shawnee, Kan.
10	Dennis Tanner, Jr.	S	6-3	182	Jr.	2L	Kansas City, Mo.	75	Travis Funk	OL	6-3	305	Fr.	RS	Kearney, Mo.
11	Nate Dreiling	LB	6-4	226	Sr.	3L	Hutchinson/Victoria, Kan.	76	Jordan Wiedemann	S	6-2	191	Fr.	RS	Maize, Kan.
12	Anthony Abenoja	QB	6-3	210	Jr.	2L	Overland Park, Kan.	77	Cody Holland	OL	6-6	334	Sr.	3L	Neosho, Mo.
13	Connor Frazell	PK	5-10	183	Jr.	1L	Iola, Kan.	78	Bo Weber	OL	6-4	273	Fr.	RS	Bentonville, Ark.
14	DeVante Bausby	CB	6-2	164	Jr.	2L	Kansas City, Mo.	79	Tyler Smith	OL	6-4	291	Jr.	2L	Sand Springs, Okla.
15	Isaac Maselera	S	6-0	181	Jr.	TR	Glenpool, Okla.								
16	Herman Ming	WR	6-2	190	So.	1L	Kansas City, Kan.	80	Austin Daniel	WR	6-2	201	So.	1L	Webb City, Mo.
17	Levi Kuntzsch	WR	6-5	211	Sr.	3L	Scott City, Kan.	81	Luke Rumpy	WR	5-9	170	Jr.	2L	Overland Park, Kan.
18	Gavin Lutman	WR	6-4	201	Jr.	2L	Peculiar, Mo. High School	82	Brady Leitchworth	TE	6-3	220	Jr.	2L	Blue Springs, Mo.
19	Keeston Terry	S	6-3	198	Jr.	1L	Blue Springs, Mo.	83	Zach Bessette	TE	6-3	225	Jr.	1L	Ulysses, Kan.
								84	Bradley Argabright	WR	6-1	182	Jr.	2L	Olpe, Kan.
20	Derek Beck	WR	5-1	165	Fr.	RS	Pittsburg, Kan.	85	Dreu White	TE	6-6	239	Fr.	RS	Kansas City, Kan.
21	Dino Teague	CB	6-0	172	So.	1L	Tulsa, Okla.	86	Conner Combes	TE	6-5	250	Sr.	1L	Overland Park, Kan.
22	Mason Snow	WR	6-0	167	Fr.	RS	Bentonville, Ark.	87	Trey Myers	TE	6-4	226	So.	SQ	Kansas City, Mo.
23	Eric Smith	CB	5-10	185	So.	TR	Brentwood, Calif.	88	Kyle Swartz	TE	6-3	226	Fr.	RS	Olathe, Kan.
24	Tyler Disney	LB	6-1	214	Jr.	2L	Stillwell, Kan.	89	Trey Berryberry	WR	5-11	176	Sr.	1L	Carthage, Mo.
25	Scott Roderique	S	6-0	184	So.	1L	Webb City, Mo.								
26	James Gaine	CB	5-11	180	Sr.	TR	St. Louis, Mo.	90	Joe Uzzel	DL	6-4	233	Sr.	3L	Catoosa, Okla.
27	Savoy Santiago	S	6-0	198	Fr.	RS	Bentonville, Ark.	91	Justin Strong	DL	6-1	242	So.	SQ	Harrisonville, Mo.
28	Joe Windschell	LB	6-3	228	Sr.	3L	Smith Center, Kan.	92	Montrae Strickland	DL	6-4	225	So.	1L	Lee's Summit, Mo.
29	Steven Sullivan	RB	5-10	180	Fr.	RS	Blue Springs, Mo.	93	Matt Anderson	DL	6-2	318	Jr.	2L	Sand Springs, Okla.
								94	Will Grissom	DL	6-5	269	Sr.	3L	East Orange, N.J.
30	Scott Lester	FB	6-0	224	Sr.	1L	Wichita, Kan.	95	Derrick Decker	DE	6-5	216	Fr.	RS	Rose Hill, Kan.
31	Jared Vinoverski	S	6-3	210	Sr.	3L	Lawrence, Kan.	96	Dallas Shalz	DL	6-2	228	Jr.	2L	Kansas City, Kan.
32	Quad Ware	S	6-0	192	Fr.	RS	Broken Arrow, Okla.	97	Avery Adair	DE	6-5	228	Jr.	2L	Raytown, Mo.
33	Bre Holman	RB	5-9	209	Fr.	RS	Oklahoma City, Okla.	98	Barian Holmes	DL	6-2	275	Fr.	RS	Kansas City, Mo.
34	Brian Poston	RB	6-0	208	So.	1L	Carthage, Mo.	99	Taye Irvin	DL	6-1	327	So.	1L	LaGrange, Ga.
35	Daniel Rank	WR	5-8	169	Sr.	SQ	Arma, Kan.	Additional Squad Members							
36	Austin Leake	S	6-1	201	Sr.	SQ	Independence, Kan.			S	5-11	150	Fr.	HS	Olpe, Kan.
37	Jimmy Washington	CB	5-11	170	Fr.	RS	Wichita, Kan.		Mitchell Argabright	TE	6-3	255	Fr.	HS	Lee's Summit, Mo.
38	Chris Heffern	S	5-10	180	Jr.	1L	Iola, Kan.		Colin Aubuchon	DL	6-4	270	Fr.	HS	Broken Arrow, Okla.
39	Skytarr Gatson	S	5-11	189	Fr.	RS	Wichita, Kan.		Daniel August	LB	5-11	225	Fr.	HS	O'Fallon, Mo.
									Demetrius Bernard	WR	6-2	180	Fr.	HS	Pittsburg, Kan.
40	Taylor Counts	RB	5-11	213	Sr.	1L	Salina, Kan.		Spencer Bernhardt	S	5-9	170	Fr.	HS	Adair, Okla.
41	Luke Gallo	WR	6-1	179	Sr.	SQ	Olathe, Kan.		Brady Bradbury	DL	6-3	285	Fr.	HS	Muskogee, Okla.
42	Kyler Thompson	DE	6-3	225	Jr.	1L	Lallapre, Kan.		Andy Brestel	DE	6-3	220	Fr.	HS	Tulsa, Okla.
43	Kyle Anderson	TE	6-4	230	Fr.	RS	Rose Hill, Kan.		Antoine Brown	RB	5-8	205	Fr.	HS	Hays, Kan.
44	Stephen Poston	WR	6-3	220	Sr.	1L	Carthage, Mo.		David Cardinal Jr.	OL	6-5	240	Fr.	HS	Fayetteville, Ark.
45	Beron Washington	S	6-1	191	So.	SQ	Raymore, Mo.		Chase Carney	OL	6-4	255	Fr.	HS	Overland Park, Kan.
46	Chad Levin	PK	5-8	160	Fr.	RS	Bentonville, Ark.		Ryan Cipriani	QB	6-3	180	Fr.	HS	Jefferson City, Mo.
47	Griffin Knopp	P	6-3	178	Jr.	1L	Fort Scott, Kan.		Thomas LePage	TE	6-3	230	Fr.	HS	Blue Springs, Mo.
48	Alex Howdeshell	LS	6-1	238	So.	1L	Lee's Summit, Mo.		Carson Leitchworth	WR	6-1	190	Fr.	HS	Lebanon, Mo.
49	Nick Sims	CB	5-9	172	Fr.	RS	Wichita, Kan.		Aren Martin	DE	6-6	268	Jr.	1L	St. Louis, Mo.
									Robert McField	WR	5-9	185	Fr.	HS	Stillwell, Kan.
50	Timmy Chadd	LB	5-10	204	So.	SQ	Wichita, Kan.		Ryan McVerlin	DL	6-2	250	Fr.	HS	Prairie Grove, Ark.
51	Colby Hall	LB	5-10	192	So.	1L	Lamar, Mo.		Jared Murphy	S	6-2	210	Fr.	HS	Overland Park, Kan.
52	Eric Brantley	LB	5-11	189	So.	1L	Kansas City, Mo.		Alex Norris	TE	6-3	230	Fr.	HS	Topeka, Kan.
53	Dylan Case	LB	5-10	204	So.	SQ	Lee's Summit, Mo.		Andy Otting	WR	6-0	177	Fr.	RS	Lee's Summit, Mo.
54	Spencer Brown	LB	5-11	204	Fr.	RS	Lee's Summit, Mo.		Austin Panko	OL	6-5	280	Fr.	HS	Bentonville, Ark.
55	Heath Wilson	DE	6-3	250	Fr.	RS	Wagoner, Okla.		Jacob Ralph	OL	6-4	300	Fr.	HS	Cashion, Okla.
56	Blake Woellhof	LB	6-2	210	Fr.	RS	Concordia, Kan.		Dexton Robertson	RB	5-10	170	Fr.	HS	Albuquerque, N.M.
57	Lewis Foutz	DE	6-3	227	So.	1L	Blue Springs, Mo.		Michael Rose	OL	4-2	320	Fr.	HS	O'Fallon, Mo.
58	Zach Burkhart	OL	6-3	293	Jr.	TR	Mulvane, Kan.		Ben Saint	WR	5-11	180	Fr.	HS	Wichita, Kan.
59	Jake Wall	OL	6-1	253	Fr.	RS	Carl Junction, Mo.		Kellen Sims	DE	6-4	220	Fr.	HS	Webb City, Mo.
									Jose Speer	S	6-0	190	Fr.	HS	Oswego, Kan.
60	Cory Phillips	OL	6-4	309	So.	SQ	Blue Springs, Mo.		Ethan Spore	WR	5-9	178	Jr.	TR	St. Petersburg, Fla.
61	Gavin Rainwater	DL	6-2	311	So.	1L	Neosho, Mo.		Andre Taylor	WR	6-3	210	Fr.	HS	Albuquerque, N.M.
62	Deaven Jensen	DE	6-1	237	Jr.	TR	Lenexa, Kan.		Christian Thompson	LB	6-0	235	Fr.	HS	Norman, Okla.
63	Jake Taylor	OL	6-8	294	So.	SQ	Oologah, Okla.		Jaxon Uhles	RB	5-10	190	Sr.	3L	Sedalia, Mo.
64	Sleyst Stubenrauch	LS	6-0	200	Fr.	RS	Bonner Springs, Kan.		Solomon Watkins	RB	5-9	185	Fr.	RS	Lamar, Mo.
65	Brew Gill	LB	6-0	183	Fr.	RS	Pittsburg, Kan.		Markell White	OL	6-3	270	Fr.	HS	Yukon, Okla.
									Kelly Wortham	DB	6-0	172	Fr.	HS	Holtan, Kan.
									Jaxon Wright	DB	6-0	180	Fr.	HS	Tulsa, Okla.
									Deontre Youngblood	DB	6-0	180	Fr.	HS	

COACHING STAFF: Tim Beck, Head Coach; Dave Wiemers, Assistant Head Coach/Defensive Coordinator; Steve Rumpy, Offensive Coordinator; Lance Cullen, Secondary; Ryan Hellwig, Defensive Line; Neal Philpot, Wide Receivers; John Pierce, Running Backs; Carl Roth, Linebackers; Steve Wells, Offensive Line; Larry Garman, In-Season Recruiting; Darrien Gordon, Secondary; John Kemp, Secondary; Frank Naccarato, Wide Receivers; John Johnson, Strength; Ike Eguare, Graduate Assistant; Mark Chesnut, Student Assistant; Luke Miller, Student Assistant; Zach Rumpy, Student Assistant.

2013 PITT STATE FOOTBALL

NORTHEASTERN STATE ROSTER

NO	NAME	POS	HT	WT	CL	HOMETOWN	NO	NAME	POS	HT	WT	CL	HOMETOWN
2	Marquint Grant	DB	5-10	170	Fr-RS	Grand Prairie, Texas	58	Brad Ross	DL	6-1	260	So.	Oklahoma City, Okla.
3	Victor Johnson	DB	6-1	190	Sr.	Waco, Texas	59	Austin Mefford	LB	6-0	215	So.	Nowata, Okla.
4	Marquin Watts	DB	5-10	165	Sr.	Lewisville, Texas	60	Reuben Washington	DL	6-1	285	Fr.	Houston, Texas
5	Tank Richmond	WR	6-0	165	Fr-RS	Oklahoma City, Okla.	61	Bustin Reid	OL	6-3	290	Jr.	Purcell, Okla.
6	Cory Meaders	QB	6-3	190	Fr.	Anna, Texas	62	Bobby Pointer	DL	6-1	287	Sr.	Dewar, Okla.
7	Cruz Williams	WR	6-4	215	Jr.	Little Rock, Ark.	63	Jonathan Brown	OL	6-2	305	Jr.	Sylvester, Ga.
8	Johnny Deaton	QB	6-3	210	Sr.	Sand Springs, Okla.	65	Anthony Frazier	LS	6-1	290	So.	Midwest City, Okla.
9	J.J. Ozturk	PK	5-8	160	Fr.	Park Hill, Okla.	66	Kenny Garrett	DL	6-4	290	Sr.	Oklahoma City, Okla.
10	Vernon Jones	DB	6-0	175	Sr.	Jacksonville, Fla.	67	Ross Dvorak	OL	6-1	290	So.	Louisburg, Kan.
11	Thor Long	QB	6-1	205	So.	Sherman, Texas	70	Hudson Baab	OL	6-2	285	Fr-RS	Cleveland, Okla.
12	Peter Udumoh	WR	6-3	190	Fr.	Tulsa, Okla.	71	Aaron Patterson	OL	6-2	290	Fr.	Stillwater, Okla.
13	Logan Andrews	TE	6-4	220	Jr.	Gore, Okla.	72	Buck Spurger	OL	6-6	340	Jr.	Comanche, Texas
14	Jared Taylor	RB	6-0	200	Fr.	Fort Worth, Texas	74	Jacob Meador	OL	6-4	305	Fr.	Little Elm, Texas
15	Kyler Harris	DB	6-0	180	So.	Muskogee, Okla.	75	Adam Williams	OL	6-3	270	Fr.	Melissa, Texas
16	Marcus Colton	DB	5-9	175	Jr.	Florissant, Mo.	76	Ethan James	OL	6-5	315	Jr.	Gore, Okla. / Gore HS
17	Prince McJunkins	WR	6-1	185	So.	Wagoner, Okla.	77	Devin Crisp	OL	6-3	295	Fr-RS	Oklahoma City, Okla.
19	Barrain Winston	DB	5-11	175	Fr-RS	Midwest City, Okla.	78	Trenton Hooker	OL	6-3	290	So.	Locust Grove, Okla.
20	Joel Rockmore	RB	5-7	185	Jr.	Fort Worth, Texas	79	Trevon Lawson	OL	6-1	325	So.	Ardmore, Okla.
21	Zach Eggleston	DB	5-11	175	Fr-RS	Beggs, Okla.	81	Marco Renteria	TE	6-2	250	Fr-RS	San Antonio, Texas
22	Terrance Dixon	RB	5-10	189	Jr.	Sand Springs, Okla.	82	Jordan Robinson	WR	6-1	180	So.	Wagoner, Okla.
23	Cole Johnson	DE	6-2	250	Sr.	Tulsa, Okla.	83	Steffon Herd	WR	6-4	190	Fr-RS	Oklahoma City, Okla.
24	Colten Nevel	LB	6-1	195	Jr.	Caloosa, Okla.	84	Jay Werner	TE	6-2	225	Fr.	Poteau, Okla.
25	Chavez Wyatt	RB	5-8	180	Fr.	Oklahoma City, Okla.	85	Aaron Kirkpatrick	WR	5-6	175	So.	Frisco, Texas HS
26	Dylan Yazel	RB	5-10	165	Fr.	Greenwood, Ark.	87	Austin Roberts	WR	5-11	195	Fr.	Ozark, Mo.
27	Brew Patton	PK	6-1	155	Sr.	Fayetteville, Ark.	88	Kyle Matheson	TE	6-2	225	Fr-RS	Highland Village, Texas
28	Josiah Reed	WR	5-9	160	Fr-RS	Ardmore, Okla.	89	Ray Dobbbs	WR	6-2	180	Fr.	Carrollton, Texas
29	Beau Proctor	LB	5-10	205	Fr.	Norman, Okla.	90	Kenley Choute	DL	6-2	310	Jr.	Fort Lauderdale, Fla.
30	Garson Smallwood	LB	6-0	190	Fr.	Pryor, Okla.	91	Leo Gross	DL	6-3	250	Jr.	Oklahoma City, Okla.
31	Steven Hopper	DB	6-0	190	So.	Broken Arrow, Okla.	92	Jeremiah Milton	DL	6-3	230	Fr-RS	Tulsa, Okla.
33	James Renfrow	DE	6-2	235	Jr.	Broken Arrow, Okla.	93	Faafetai Te'o	DL	6-1	305	Sr.	Pago Pago, American Samoa
35	Lane Dortch	FB	6-0	220	Fr-RS	Fort Gibson, Okla.	94	Bakota Moran	DL	6-1	270	Fr-RS	Midwest City, Okla.
36	Michael Davis	LB	5-10	200	Fr.	Troup, Texas							
37	Cory Park	LB	6-3	230	Jr.	Claremore, Okla.							
39	Dylan Beers	PK	6-1	195	Jr.	Jenks, Okla.							
40	Eddie General	LB	5-10	190	Jr.	Reddick, Fla.							
41	Langston Jones	LB	6-0	205	Sr.	Whitesboro, Texas							
42	David Lewis	DB	5-9	185	Sr.	Mesquite, Texas							
43	Nick Whitlow	FB	6-0	230	Sr.	Henryetta, Okla.							
44	Ashdon Perry	RB	6-0	210	So.	Ardmore, Okla.							
46	Chandler Barr	DB	6-1	170	Jr.	Anadarko, Okla.							
47	Braden Smith	DE	6-2	220	Fr-RS	Commerce, Okla.							
48	Bonnie Fuston	LB	5-10	210	Jr.	Enid, Okla.							
49	Kenny Culbertson	LB	6-2	215	So.	Frisco, Texas							
50	Brian West	DL	6-2	240	Fr.	Muldrow, Okla.							
51	Mark Skotnicki	DL	6-0	300	Fr.	Frisco, Texas							
53	Tyler Easter	OL	6-4	275	Fr-RS	Spavinaw, Okla.							
54	Tanner Sheets	OL	6-4	265	Fr.	Fort Gibson, Okla.							
56	Jacob Barton	DL	6-0	290	Fr.	Gainesville, Texas							
57	Jack Gray	LB	6-1	220	Sr.	Chandler, Okla.							

COACHING STAFF: Kenny Evans, Head Coach; John Murray, Assistant Head Coach; Paul Lane, Offensive Coordinator; Steve Patterson, Co-Defensive Coordinator; Casey Carlo, Co-Defensive Coordinator; Mike Barela, Offensive Line; Bradley Thomas, Wide Receivers.

WACO SCHOOLHOUSE HAUNT

wacoschoolhousehaunt.com

OPEN FALL 2013

148 ROSE STREET WACO, MISSOURI

(just south of Asbury between Pittsburg and Joplin)



LIKE US ON FACEBOOK

Lucky BUT
lawncare inc.
620.249.3485

2013 PITT STATE FOOTBALL

PSU-NSU OFFENSIVE COMPARISON [2012]

Total Offense		Yards	Avg.
Pittsburg State		4544	454.4
Northeastern State		3741	374.1
Rushing Offense		Yards	Avg.
Pittsburg State		2046	204.6
Northeastern State		1757	175.7
Passing Offense		Yards	Avg.
Pittsburg State		2498	249.8
Northeastern State		1984	198.4
Scoring Offense		Points	Avg.
Pittsburg State		330	33.0
Northeastern State		231	23.1
Passing Efficiency	C-A-TD-I	Yards	Rat.
Pittsburg State	181-300-9	2498	140.8
Northeastern State	164-338-131	1984	100.9
Kickoff Returns		No/Yards	Avg.
Pittsburg State		36/694	19.3
Northeastern State		42/807	19.2
Third Down Conversions		Tot	Pct.
Pittsburg State		71/151	47%
Northeastern State		53/148	36%
Time of Possession		Avg	
Pittsburg State		34:06	
Northeastern State		28:20	
Penalties		Tot/Yds	Avg
Pittsburg State		72/575	57.5
Northeastern State		69/718	71.8

PSU-NSU DEFENSIVE COMPARISON [2012]

Total Defense		Yards	Avg.
Pittsburg State		3204	320.4
Northeastern State		4063	406.3
Rushing Defense		Yards	Avg.
Pittsburg State		1410	141.0
Northeastern State		1784	178.4
Passing Defense		Yards	Avg.
Pittsburg State		1794	179.4
Northeastern State		2279	227.9
Scoring Defense		Points	Avg.
Pittsburg State		330	33.0
Northeastern State		314	31.4
Passing Eff. Defense	C-A-TD-I	Yards	Rat.
Pittsburg State	129-261-12	1794	114.4
Northeastern State	209-343-122	2279	126.1
Punt Returns		No/Yards	Avg.
Pittsburg State		34/457	13.4
Northeastern State		16/57	3.6
Turnover Margin		Mar	Avg
Pittsburg State		+2	+0.2
Northeastern State		-6	-0.6
Net Punting		Tot/Net	Avg
Pittsburg State		44/1765	33.4
Northeastern State		55/2079	32.1

Oklahoma set the previous rushing record (5,196 yards) in 1971, and Texas Tech held the previous total offense mark (7,576 yards) in 2003.

In 2005, Pitt State ranked second nationally in scoring and total offense, averaging **46.8 points** and **536.0 total yards** per game. The Gorillas also ranked seventh nationally in rushing, averaging 295.2 yards a game.

In 2006, Pitt State led NCAA Division II in scoring and ranked No. 2 nationally in total offense, averaging **44.8 points** and **454.8 total yards** per game in 2006.

In 2007, the Gorillas ranked 21st nationally in scoring and 19th nationally in total offense, averaging **37.4 points** and **454.2 total yards** per game. In 2008, Pitt State ranked 18th nationally in scoring (35.5 ppg) and 21st in the nation in total offense (432.6 ypg).

In 2009, the Pitt State offense averaged 29.4 points and 434.4 total yards per game, while the Gorillas averaged 22.8 points and 357.7 total yards per game in 2010.

In 2011, the Gorillas ranked sixth nationally in **scoring (40.2 ppg)** and 19th in the country in **total offense (448.5 ypg)**. Last year, the Gorillas ranked 24th nationally in total offense (454.4 ypg) and 27th in the country in rushing offense (204.6 ypg).

THE PITT STATE OFFENSE

Junior quarterback **Tony Abenoja** is set to lead the high-powered Pitt State offense for a second season. Abenoja (6-3, 210) showcased a strong passing arm and flashes exceptional play during his rookie season as a starter.

The Overland Park, Kan., native earned honorable mention All-MIAA honors while passing for 2,330 yards and 15 touchdowns and rushing for 241 yards and three more scores. He set a school record by averaging 233.0 passing yards per game while directing a Pitt State "pistol" offense that generated 33.0 points and 454.4 total yards per game in 2012.

Sophomore **Jeff Seybold, Jr.** heads a cast of athletes battling to become the Gorillas feature running back.

Seybold (5-11, 208) battled back from a medical redshirt season to enjoy a solid spring camp. He has 63 career carries for 299 yards and two TDs in 10 games over two seasons for the Gorillas.

Redshirt freshmen **Dre Holman** (5-9, 209) and **Steve Sullivan** (5-10, 180) also capitalized on productive redshirt seasons and enter fall camp squarely in the mix for significant action for the Gorillas.

Senior **Scott Lester** (6-0, 224) and sophomore **Brian Poston** (6-0, 208) are expected to see significant action at the "B" back position.

At wide receiver, the Gorillas welcome back one of the most explosive players in NCAA Division II in senior **John Brown**, as well as a deep stable of play makers.

Brown (5-11, 170), a 2012 Harlon Hill Trophy finalist, earned consensus All-America honors as a junior in 2012. The Homestead, Fla., native finished the season ranked No. 2 in Division II in all-purpose yards (200.0 ypg) and No. 20 nationally in receiving yards (97.3 ypg).

Brown, a burner with 4.27 (second 40-yard dash) speed, caught 63 passes for 973 yards and eight touchdowns on the season. He enters the 2013 campaign as Pitt State's all-time receptions leader with 124 catches for 2,189 yards and 20 touchdowns.

Juniors **Gavin Lutman** and **Luke Rampy** also return with starting experience to the receiving corps. Rampy (5-9, 170) caught 18 passes for 311 yards (17.1 ypc) and two touchdowns in 2012, while Lutman (6-4, 201) added 13 grabs for 168 yards (12.9 ypc).

Senior **Levi Kuntzsch** (6-5, 211), junior **Bradley Argabright** (6-1, 182) and sophomores **Austin Daniel** (6-2, 201) and **Herman Ming** (6-2, 190) all are expected to see significant action for the Gorillas. Sophomore **Marquis Cushon** (5-10, 156) also moved to receiver from cornerback during spring drills.

A trio of players — senior **Conner Combes** (6-5, 250), junior **Zach Bessette** (6-3, 225) and redshirt freshman **Kyle Swartz** (6-3, 226) — are expected to lead Pitt State's tight end contingent.

Combes and Swartz both are returning from injury in 2012, while Bessette saw limited action in his first season in the program a year ago.

Up front, the Gorillas return three players who started all 10 games last year — senior tackle **Cody Holland** (6-6, 334) and junior guards **Tyler Smith** (6-4, 291) and **Ollie Venegas** (6-3, 300).

Holland, a three-year starter with 29 career starts, will move to left tackle this fall. The Neosho, Mo., native earned second-team All-MIAA and honorable mention All-America honors during his junior campaign.

Senior **Taylor Peak** (6-2, 267) is expected to start at center, while junior **Boston Higgins** (6-3, 269) will start at right tackle.

[game notes continued on page 39]

TEAM KONG

www.teamkong.com



Your online source for daily Gorilla content!

Coach & player podcasts by Tom Van Hoy

Stories posted immediately following the game

Game previews & unique PSU features

Podcasts, blogs and polls engaging all Gorilla fans

A proud partner of PSU Athletics!

WE'VE GOT THIS IN-STOCK & READY TO SHIP



Parts & Accessories for Trucks & SUVs

1947-2013 **CHEVY/GMC**

1948-2013 **FORD**

1994-2012 **DODGE**

LMC
TRUCK

PARTS & ACCESSORIES

PARTS FOR
1972-93 DODGE TRUCKS
SPRING 2014



(800) 562-8782

www.LMCTRUCK.com

©2013 Long Motor Corp.

BROADWAY *Electronics, Inc.*

SONY
make.believe



**Sales
Service
Installation**

**1010 South
Broadway
(620) 231-5780**

AN EXCLUSIVE TV EXPERIENCE
DESIGNED JUST FOR YOU

CONTOUR sm

FROM **COX**

to learn more

Call 866-719-2452 | Click cox.com/contour | Come by your Cox Solutions Store

© 2013 Cox Communications, Inc.

2013 PITT STATE FOOTBALL

THE PITT STATE OFFENSE

The Gorillas also feature a veteran cast on the defensive side of the ball, led by senior linebacker **Nate Dreiling**, who is bidding to become just the second position player in program history to earn All-America honors in all four seasons.

Dreiling (6-4, 226) made a team-leading 83 tackles (25 solo) with 9.5 tackles-for-loss and 4.0 quarterback sacks in 2012. He enters the 2013 campaign with 382 tackles, needing 89 stops to become the school's all-time tackle leader and 108 stops to set the MIAA record in the category.

In addition to Dreiling, Pitt State welcomes back a pair of talented linebackers in senior **Joe Windscheffel** and junior **Tyler Disney**.

Windscheffel (6-3, 228) and Disney (6-1, 214) posted nearly identical statistical numbers in 2012. Both players made 43 tackles, 2.0 tackles-for-loss and one interception apiece. Windscheffel did so starting nine games, while Disney drew one start last year.

In the secondary, the Gorillas welcome back a pair of All-MIAA safeties with starting experience in juniors **Jason Peete** and **Keeston Terry**.

Peete (6-3, 191) earned honorable mention All-MIAA honors as a junior in 2012, making 45 tackles with 4.5 TFLs as well as eight pass breakups. Terry (6-3, 198), who transferred to Pitt State from the University of Kansas, added 38 tackles and two interceptions on the season, also earning honorable mention All-MIAA recognition.

Sophomore **Deron Washington** (6-1, 191) and junior transfer **Isaac Maselera** (6-0, 181) figure to battle for the starting role at free safety.

At cornerback, juniors **DeVante Bausby** and **Aries Herrion** and sophomore **Dino Teague** look to provide veteran leadership.

Bausby (6-2, 164) posted 21 tackles, grabbed a pair of interceptions and broke up one pass during the 2012 season, while Herrion (5-10, 172) added 22 stops and an interception. Teague (6-0, 172) saw limited action a year ago, but it coming off a solid spring camp for the Gorillas.

Senior **Israel Maselera** (5-8, 158) and senior transfer **James Caine** (5-11, 180) also figure to battle for significant action.

The Gorillas' defensive line cast features an experienced group led by senior **Joe Uzzel**.

Uzzel (6-4, 233) earned honorable mention All-MIAA honors in 2012 playing primarily at defensive end where he made 36 tackles, including 8.0 TFLs and 3.0 quarterback sacks. The Catoosa, Okla., native figures to split time at defensive end and defensive tackle this year.

Junior **Avery Adair** (6-5, 228) also figures to see significant action at defensive end. Adair made 21 tackles with 6.0 TFLs and 4.5 quarterback sacks last year.

Sophomore **Lewis Foutz** (6-3, 227) and redshirt freshman **Heath Wilson** (6-3, 250) also are expected to vie for playing time at defensive end for the Gorillas.

Junior transfer **Deaven Jensen** (6-1, 237), junior **Dallas Shalz** (6-2, 228), sophomores **Taye Irvin** (6-1, 327) and **Gavin Rainwater** (6-2, 311) and senior **Will Grissom** (6-5, 269) return to the interior line.

SCOUTING THE RIVERHAWKS

Northeastern State returns 15 starters (six offense, nine defense) from last year's squad that posted a 4-6 record during the school's inaugural year in MIAA play.

The RiverHawks fell in their first six contests before closing out their 2012 campaign on a four-game winning streak.

Junior running back **Joel Rockmore** (5-7, 185) returns to the squad after an All-MIAA sophomore campaign. The Fort Worth, Texas, native tallied 1,024 yards (5.51 ypc) and 10 touchdowns in nine games last season. Rockmore ranked second in the conference in rushing (113.8 ypg) and fifth in all-purpose yards (151.4 ypg). Senior quarterback **Johnny Deaton** (6-3, 210) completed 152 of 318 (.478) passes for 1861 yards with 10 TDs and 12 INTs last season.

Senior Linebacker **Langston Jones** (6-0, 205) returns after receiving second-team All-MIAA honors in 2012. Jones led the conference in tackles with 110 (11.0 tpg). He also tallied 11.0 tackles-for-loss, 2.0 quarterback sacks and one interception on the season.

Senior defensive back **Victor Johnson** (6-1, 190) was second on the team with 82 tackles (46 solo), two INTs, seven pass breakups, and a fumble recovery. Senior defensive back **Vernon Jones** (6-0, 175) also finished third in the MIAA with five interceptions.

New vendors!

Enjoy samples
from your
favorite
area
restaurants!

A new homecoming tradition!

TASTE
of Pittsburg

New beer &
wine tasting!

Plus,
live music
from
Area 51!

BAMBOO • BARTO'S IDLE HOUR • BIG BEN'S BBQ • CAFÉ DEL RIO • CHATTERS/HOUSE OF WINGS
JOSIE'S RISTORANTÉ • THE MALL DELI • PALLUCCA'S • SODEXO • SWEET DESIGNS CAKERY • PLUS MORE!

Friday, Oct. 4 • 6-8 p.m. • KTC Courtyard • \$20/person • RSVP by Sept. 25

620-235-4758

www.pittstate.edu/tasteofpittsburg

JOIN US FOR THESE ADDITIONAL HOMECOMING EVENTS:

Friday, Oct. 4 – Outstanding Alumni Award Reception, 4:30-6 p.m., Wilkinson Alumni Center
Saturday, Oct. 5 – Homecoming Parade, Campus Tours, GorillaFest, Chicken Wars Tailgate

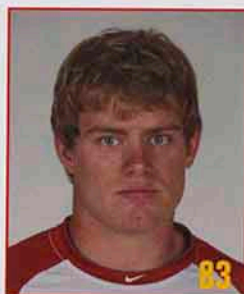
Sponsored by PSU Alumni & Constituent Relations

2013 PITT STATE FOOTBALL



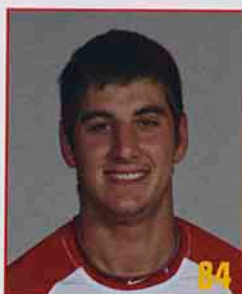
BRADY LETCHWORTH

6-3 • 220 • JR • TE
Blue Springs, Mo.



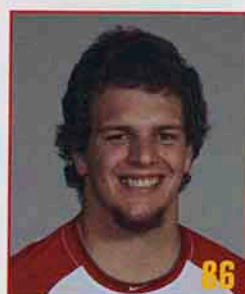
ZACH BESSETTE

6-3 • 235 • JR • TE
Ulysses, Kan.



BRADLEY ARGABRIGHT

6-1 • 182 • JR • WR
Olpe, Kan.



CONNER COMBES

6-5 • 250 • SR • TE
Overland Park, Kan.



TREY MYERS

6-4 • 226 • SO • TE
Kansas City, Mo.



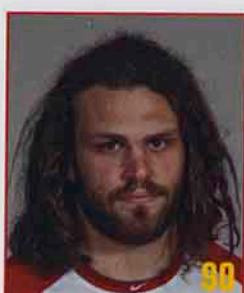
KYLE SWARTZ

6-3 • 226 • FR-BS • TE
Olathe, Kan.



TREY DERRYBERRY

5-11 • 176 • SR • WR
Carthage, Mo.



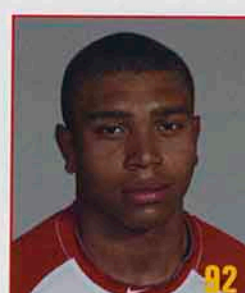
JOE UZZEL

6-4 • 233 • SR • DL
Catoosa, Okla.



JUSTIN STRONG

6-1 • 242 • SO • DL
Harrisonville, Mo.



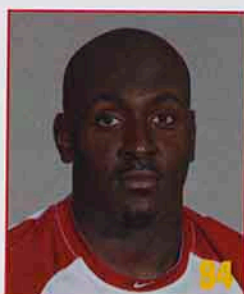
MONTRAE STRICKLAND

6-4 • 225 • SO • DL
Lee's Summit, Mo.



MATT ANDERSON

6-2 • 318 • JR • DL
Sand Springs, Okla.



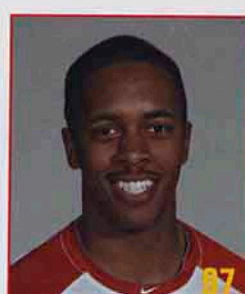
WILL GRISSOM

6-5 • 269 • SR • DL
Orange, N.J.



DALLAS SHALZ

6-2 • 228 • JR • DL
Kansas City, Kan.



AVERY ADAIR

6-5 • 228 • JR • DE
Raytown, Mo.



DARIAN HOLMES

6-2 • 275 • FR-BS • DL
Kansas City, Mo.



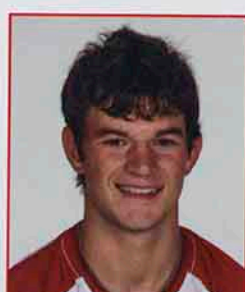
TAYE IRVIN

6-1 • 327 • SO • DL
LaGrange, Ga.



KYLE ANDERSON

6-4 • 230 • FR-BS • TE
Rose Hill, Kan.



MITCHELL ARGABRIGHT

5-11 • 150 • FR • S
Olpe, Kan.



COLIN AUBUCHON

6-3 • 255 • FR • TE
Lee's Summit, Mo.



DANIEL AUGUST

6-4 • 270 • FR • DL
Broken Arrow, Okla.

2013 PITT STATE FOOTBALL



GAVIN RAINWATER
6-2 • 311 • SO • DL
Neosho, Mo.



DEAVEN JENSEN
6-1 • 237 • JR • DE
Lenexa, Kan.



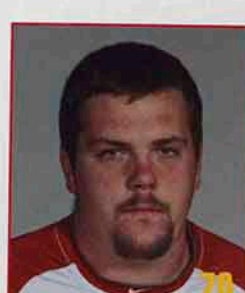
JAKE TAYLOR
6-8 • 294 • SO • OL
Oologah, Okla.



BOSTON HIGGINS
6-3 • 269 • JR • OL
Blue Springs, Mo.



TANK BURNS
6-2 • 282 • JR • DL
Columbus, Kan.



CALE KARIGAN
6-5 • 268 • JR • OL
Paola, Kan.



JESSE INGLE
6-3 • 255 • JR • OL
Valley Center, Kan.



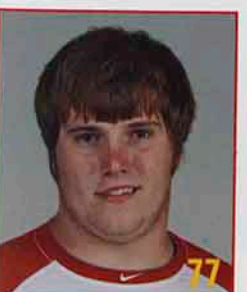
TAYLOR PEAK
6-2 • 267 • SR • OL
Girard, Kan.



OLLIE VENEGAS
6-3 • 300 • JR • OL
Olathe, Kan.



TRAVIS FUNK
6-3 • 305 • FR-BS • OL
Kearney, Mo.



CODY HOLLAND
6-6 • 334 • SR • OL
Neosho, Mo.



BO WEBER
6-4 • 273 • FR-BS • OL
Bentonville, Ark.



TYLER SMITH
6-4 • 291 • JR • OL
Sand Springs, Okla.



AUSTIN DANIEL
6-2 • 201 • SO • WR
Webb City, Mo.



LUKE RAMPY
5-9 • 170 • JR • WR
Overland Park, Kan.

2013 PITT STATE FOOTBALL



DEREK BECK
5-10 • 150 • FR-RS • WR
Pittsburg, Kan.



DEMETRIUS BERNARD
5-11 • 225 • FR • LB
O'Fallon, Mo.



SPENCER BERNHARDT
6-2 • 180 • FR • WR
Pittsburg, Kan.



BRADY BRADBURY
5-9 • 170 • FR • S
Adair, Okla.



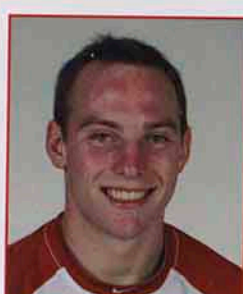
ANDREW BRESTEL
6-3 • 285 • FR • DL
Muskogee, Okla.



ANTOINE BROWN
6-3 • 220 • FR • DE
Tulsa, Okla.



DAVID CARDINAL, JR.
5-8 • 205 • FR • RB
Hays, Kan.



CODY CARLSON
5-8 • 181 • FR-RS • LB
Derby, Kan.



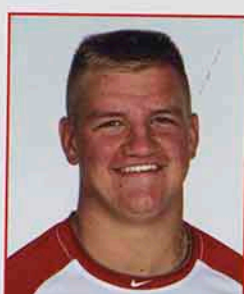
CHASE CARNEY
6-5 • 260 • FR • OL
Fayetteville, Ark.



RYAN CIPRIANI
6-4 • 255 • FR • DL
Overland Park, Kan.



DERRICK DECKER
6-5 • 215 • FR-RS • TE
Rose Hill, Kan.



BO FARROW
6-2 • 250 • FR • OL
Broken Arrow, Okla.



TODD FREEMAN
5-11 • 173 • FR-RS • QB
Wichita, Kan.



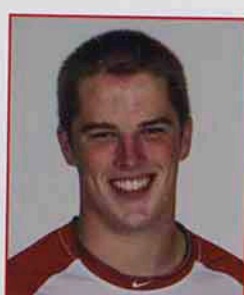
DREW GILL
6-0 • 183 • FR-RS • LB
Pittsburg, Kan.



MATT HERMANN
6-2 • 220 • FR-RS • TE
Broken Arrow, Okla.



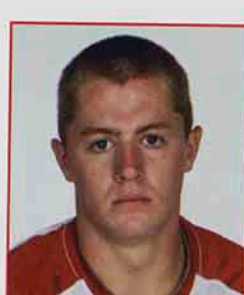
THOMAS LEPAGE
6-3 • 180 • FR • QB
Jefferson City, Mo.



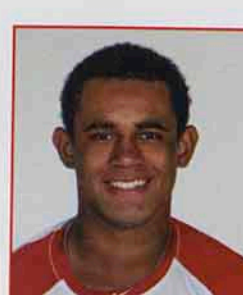
CARSON LETCHWORTH
6-3 • 230 • FR • TE
Blue Springs, Mo.



AREN MARTIN
6-1 • 190 • FR • WR
Lebanon, Mo.

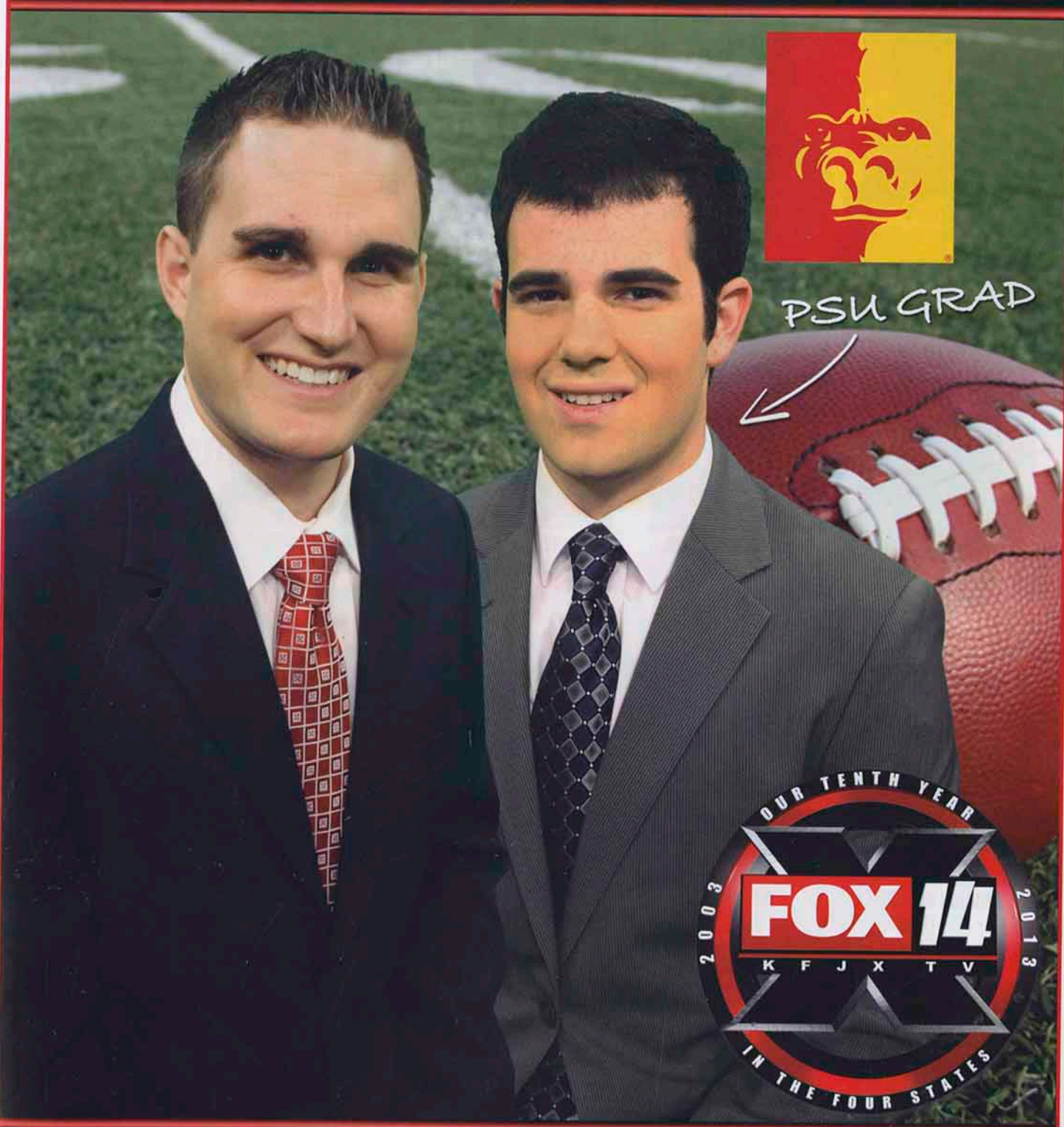


RYAN MCNERLIN
5-9 • 185 • FR • WR
Stillwell, Kan.



JARED MURPHY
6-2 • 250 • FR • DL
Prairie Grove, Ark.

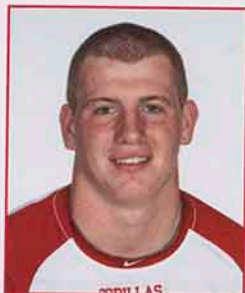
Proud supporters of GORILLA FOOTBALL!



Dan Hawk & Jake Faber

www.fox14tv.com

2013 PITT STATE FOOTBALL



ALEX NORRIS
6-2 • 210 • FR • S
Overland Park, Kan.



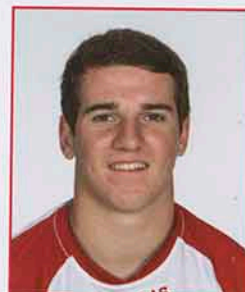
ANDY OTTING
6-3 • 230 • FR • TE
Topeka, Kan.



JACOB RALPH
6-5 • 280 • FR • OL
Bentonville, Ark.



DEXTON ROBERTSON
6-4 • 300 • FR • OL
Cashion, Okla.



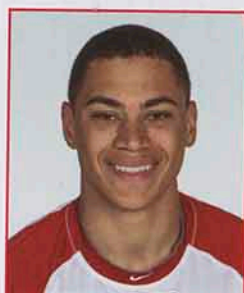
MICHAEL ROSE
5-10 • 170 • FR • RB
Albuquerque, N.M.



BEN SAINT
6-2 • 320 • FR • OL
O'Fallon, Mo.



SAVOY SANTIAGO
6-0 • 198 • FR-RS • S
Bentonville, Ark.



KELLEN SIMS
5-11 • 180 • FR • WR
Wichita, Kan.



NICK SIMS
5-9 • 172 • FR-RS • CB
Wichita, Kan.



JOSÉ SPEER
6-4 • 220 • FR • DE
Webb City, Mo.



ETHAN SPORE
6-0 • 190 • FR • S
Oswego, Kan.



STEYR STUBENRAUCH
6-0 • 200 • FR-RS • LS
Bonner Springs, Kan.



CHRIS THOMPSON
6-3 • 210 • FR • WR
Albuquerque, N.M.



JAXON UHLES
6-0 • 235 • FR • LB
Norman, Okla.



AUSTIN VANDERPOOL
5-11 • 203 • FR-RS • LB
Shawnee, Kan.



DREU WHITE
6-6 • 239 • FR-RS • TE
Kansas City, Kan.



JORDAN WIEDEMANN
6-2 • 191 • FR-RS • S
Maize, Kan.



KELLY WORTHAM
6-3 • 270 • FR • OL
Yukon, Okla.



JAXON WRIGHT
6-0 • 172 • FR • DB
Holton, Kan.



DEONTRE YOUNGBLOOD
6-0 • 180 • FR • DB
Tulsa, Okla.



Amazing events, full-service
for any budget, anytime,
to any location in our
community.



Gluten Free & Allergen-Free
Menus are Available



Banquets
Meetings
Weddings
Outdoor
Indoor

620-235-4995
catering@pittstate.edu
www.pittstatecatering.catertrax.com



SHEPHERD TEAM AUTO PLAZA

U.S. Hwy 69 • Fort Scott, KS 66701

Toll-Free - (800) 559-0930

Local - (620) 223-0900



**proud members of the
Gorilla Courtesy Car Program**

Pitt

DISCOUNT LIQUOR

1001 South Broadway • 231-2626

OPEN AT 9 A.M. ON PSU GAMEDAYS



**TAILGATE
RESPONSIBLY**

Preferred Stop for Responsible Gorilla Tailgaters

One of the largest selections of beer, liquor and wine in town

Wine Wednesday - 10% off all wine

WE ID - MUST BE 21

Crawford County

cornered



If you're looking for an affordable, relaxing weekend getaway, a family day trip, a week of outdoor recreation or great sports, you'll find it in Crawford County, Kansas. Crawford County is the ideal destination featuring a unique blend of history, heritage, art, culture, food and activities for all ages! Crawford County, Kansas *"We Have Your Next Getaway Cornered!"*

Visit CrawfordCounty.com

More than 13,000 Employees

Over 12,000 Acres

64 Consecutive Years

crawford
COUNTY
Convention & Visitors Bureau

CAMPUS BOOKSTORE

(620) 231-6747

Across From Campus
#1 Textbook Rentals

**Good Luck
Gorillas!!**

**Pitt State Gameday
Apparel Sold Here**



NPB Companies, Inc.
Event Staff & Security Services

(913) 281-2887

contact@npbcompanies.com



*200 S East Ave
Columbus, KS*



*4001 Parkview
Pittsburg, KS
1115 SW Oldham Pkwy
Lee's Summit, MO*

Go Gorillas!!!



*1021 N Hwy 69
Frontenac, KS*



*Columbus-Joplin
Wichita-Salina
Lee's Summit/KC*

THE 4-STATES SPORTS AUTHORITY

For Gorilla Football,
It's All You Need To Know



"The Voice of the Pitt State Gorillas"



Eddie Lomshek
Sports Director,
Play-By-Play



Aaron McConnell
Former PSU DL
Color Analyst

Pregame show starts one hour prior to kick off.

*A comprehensive postgame show with a college scoreboard
follows each game broadcast.*

ROCK 107.1
"THE ROCK STATION"

"The Voice of the Gorillas"

Copy Products, Inc.

*...with the reliability, efficiency, and variety of features that today's demanding offices require. We
are authorized to rent, lease, sell and service
virtually every piece of equipment offered by:*

90 Days Same As Cash
True in-house leasing options
Third party leasing
Rent-to-own
Short term rentals
Generous trade-in allowances



KONICA MINOLTA

TOSHIBA

Don't copy. Lead.



*Your Satisfaction Is Our
NUMBER ONE PRIORITY!!!*

800-237-3595
111 S. Broadway
Pittsburg, KS 66762

**Copy
Products,
Inc.**



Charley LaPorte
Regional Sales Mgr.

2013 PITT STATE FOOTBALL

KANSAS CITY GORILLA CLUB

Pittsburg State University receives strong support from the Greater Kansas City Gorilla Club, a booster organization founded in 1990. The mission of the club is "to support Pittsburg State athletic programs and to promote the University in the Kansas City area."

PSU has more than 6,000 alumni living and working in the Kansas City area on both sides of the Kansas/Missouri border. The group conducts regular meetings throughout the year often featuring PSU coaches as guest speakers.

All Gorilla fans are invited to join the club as a means of supporting Pitt State Athletics. Membership benefits include free tailgate parties at all home football games, bus trips to selected games (additional charge), Kickoff Fundraising Auction, social gatherings and many more opportunities to be with the rest of America's greatest Division II fans.

Dona Collar serves as the Kansas City Gorilla Club President. For more information on the Kansas City Gorilla Club, contact Casey Casebolt at Caseygorilla@aol.com, or just come by the KCCG Tailgate Party at any Pitt State home game



MEMBERSHIP APPLICATION

To join the Greater Kansas City Gorilla Club, please complete this application and send to Phil Kubler, 5930 Albervan, Shawnee, KS 66216. A donation of \$50 entitles you to family membership, \$25 for individual membership, with club benefits increasing with the value of your contribution. Every donation plays a vital role in PSU's ability to provide scholarships to deserving student-athletes and ultimately field successful teams!

Name _____ Phone _____
Address (City, State, Zip) _____
Place of Employment _____ Work Phone _____
Email Address _____ Years Attended PSU _____



Best Wishes Gorillas in 2013

Locally Owned and Operated
by Glen & Elizabeth Nichols

Two Pittsburg Locations:

3008 N. Broadway • 1125 S. Broadway

In Parsons: 320 E. Main



AND
Pittsburg State University
 Building a Solid
 Foundation for the
 Community



Dennis, Jane & Justin Crain
 Owners

Celebrating 42 years and 3 generations

504 N Smelter • 620-231-1520 • www.americanconcreteco.net



EXCHANGE
State Bank
 Member FDIC

108 E St. John
 Girard, KS 66743

(620) 724-4911

**GO
 GORILLAS!!**

**GO
 PITT STATE**

GO PITT STATE!



GO PITT STATE!

MEADOWBROOK SHOPPING COMPLEX - WWW.MEADOWBROOKCOMPLEX.COM

Meadowbrook Mall

JCPenney 231-2300
 Goody's 235-0147
 Pittsburg 8 Theater 232-2256
 Theater Arcade 232-2256
 Maurices 231-1940
 The Buckle 231-0210
 The Mall Deli 231-7590
 Cafe Del Rio 232-5895
 Hibbett Sports 232-6760
 Crowell Hallmark 231-3330
 Bath & Body Works 232-6589
 The Pretzel Place 240-0190
 GNC 231-1008
 Regis Hairstylist 231-0100
 Claire's Accessories 231-1522
 Fashion Nails 231-9141
 KS Drivers License 231-0711
 University Bank ATM 231-4200
 Game Recycle 308-6855
 Alpha Wireless 687-0116

Meadowbrook Commons

Comeau Jewelry 231-2530
 Sally Beauty Supply 235-0417
 OneMain Financial 235-0425
 SEK Urgent Care 231-8003
 U.S. Recruiting 231-3800
 Hospices Compassus 232-9898
 Advance America 231-4477
 Mag-Lab 232-1900
 Via Christi Home Med 235-0327
 Via Christi Behav Hlth 231-1068
 Sassypantz Boutique 231-3900

Meadowbrook Annex

U.S. Cellular 231-2444
 Edward Jones 231-8604
 Herron Regional Dental Center 231-6400

Westco HOME FURNISHINGS 231-895

www.meadowbrookcomplex.com

Mall Management

620-231-9240
 620-231-9259 FAX
meadowbrook@sunnetworks.net

MEADOWBROOK
 SHOPPING COMPLEX
 THERE'S ALWAYS SOMETHING HAPPENING AT...

202 East Centennial • Pittsburg, Kansas 66762
 620-231-9240

Follow us on Twitter at twitter.com/PittsburgMall



malibu tanning salon

Call and schedule an
 appointment today!

(620)232-8266

124 N. Broadway
 Pittsburg, KS 66762

VERSAPRO
 HEATED SUNLESS SPA SERIES

Now offering UV
 free
 tanning with our
 VersaPro
 Sunless Spray
 Tan System



2013 PITT STATE FOOTBALL

PSU INDIVIDUAL RECORDS

Starting in 2002, the NCAA adjusted its statistics policy to allow for a continuous season in football. Prior to 2001, regular season and post season statistics were kept independently of one another. PSU has modified its all-time records — combining regular season and post season play — to reflect the NCAA's change.

RUSHING

MOST YARDS GAINED

Game: 379 Ronald Moore, vs. Portland St., Dec. 5, 1992
Season: 2575 Ronald Moore, 1992
Career: 7062 Germaine Race, 2003-06

CAREER YARDS

Player	Att.	Yards
1. Germaine Race, 2003-06 †	941	6985
2. Ronald Moore, 1989-92	869	5776
3. Darren Dawson, 1989-91	667	4565
4. Neal Philpot, 2001-04	827	4337
5. Richard Overton, 1977-80	825	4004
6. Monte Weathers, 1984-87	438	3852
7. Caleb Farabi, 2005-2008	597	3292
8. Anthony Chatmon, 1998-2001	429	3149
9. Bruce Stancell, 1983-86	571	2887
10. Joey Tobin, 1989-93	404	2651

† NCAA-II Record (formerly)

SINGLE SEASON YARDS

Player	Att.	Yards
1. Ronald Moore, 1992	356	2585
2. Germaine Race, 2004	247	2213
3. Germaine Race, 2006	310	1944
4. Germaine Race, 2005	239	1846
5. Darren Dawson, 1991	282	1698
6. Monte Weathers, 1987	191	1684
7. Ronald Moore, 1991	264	1576
8. Steve Howard, 1970	272	1568
9. Mike Meek, 1988	239	1530
10. Darren Dawson, 1989	189	1452

SINGLE GAME YARDS

Yds.	Player	Att.	Tds
1. 379	Ronald Moore vs. Portland State, Dec. 5, 1992	37	5
2. 309	Germaine Race vs. Central Missouri, Nov. 11, 2006	49	4
3. 305	Germaine Race vs. Truman, Oct. 22, 2005	23	3
4. 273	Justin Johnson vs. Missouri Southern, Sept. 27, 1997	16	5
5. 268	Germaine Race vs. Fort Hays State, Oct. 14, 2006	27	4
6. 265	Willie Brown vs. Emporia State, Nov. 10, 1984	33	2
7. 257	Richard Overton vs. Missouri Western, Nov. 1, 1980	26	2
8. 256	Ronald Moore vs. Missouri Southern, Oct. 24, 1992	23	3
9. 247	Monte Weathers vs. Emporia State, Nov. 7, 1987	16	2
10. 245	Germaine Race vs. Southwest Baptist, Oct. 21, 2006	21	3

MOST YARDS GAINED/QUARTERBACK

Game: 212 Mark Smith, vs. UNO, Nov. 15, 2008 *
Season: 1398 Neal Philpot, 2004
Career: 4337 Neal Philpot, 2001-04

CAREER YARDS

Player	Att.	Yards
1. Neal Philpot, 2001-04	827	4337
2. Mark Smith, 2005-2008	436	2364
3. Andy Majors, 2002-05	393	2336
4. Jeff Moreland, 1991-95	564	2075
5. Zac Dickey, 2010-11	354	2066

SINGLE SEASON YARDS

Player	Att.	Yards
1. Neal Philpot, 2004	196	1398
2. Zac Dickey, 2011	210	1165
3. Neal Philpot, 2003	222	1144
4. Neal Philpot, 2001	235	1103
5. Lateef Walker, 1999	223	1101

SINGLE GAME YARDS

Yds.	Player	Att.	Tds
1. 212	Mark Smith vs. Nebraska-Omaha, Nov. 15, 2008 *	20	1
2. 209	Neal Philpot vs. Northwest Missouri, Oct. 13, 2001	23	1
3. 198	Neal Philpot vs. Washburn, Oct. 11, 2003	23	2
4. 195	Lateef Walker vs. North Alabama, Sept. 4, 1999	20	2
5. 172	Neal Philpot vs. Emporia State, Oct. 9, 2004	20	4
6. 167	Neal Philpot vs. Southwest Baptist, Nov. 9, 2002	24	2
7. 166	Neal Philpot vs. Washburn, Oct. 2, 2004	14	1
8. 159	Gene Stegeman vs. Missouri S&T, Sept. 20, 1986	23	1
9. 153	Neal Philpot vs. Truman, Oct. 27, 2001	30	2
10. 147	Zac Dickey vs. Northwest Missouri, Dec. 3, 2011 *	20	0

MOST TOUCHDOWNS

Game: 5 Six times, most recently by:
Germaine Race, vs. SBU, Oct. 15, 2005

Season: 39 Ronald Moore, 1992
Career: 107 Germaine Race, 2003-06

CAREER TOUCHDOWNS

Player	Tds
1. Germaine Race, 2003-06 †	107
2. Ronald Moore, 1989-92	74
3. Darren Dawson, 1989-91	61
4. Neal Philpot, 2001-04	60
5. Richard Overton, 1977-80	50
6. Anthony Chatmon, 1998-2001	46
7. Monte Weathers, 1984-87	44
8. Caleb Farabi, 2005-2008	43
8. Gene Stegeman, 1984-87	42
9. Andy Majors, 2002-05	34
10. Mark Smith, 2005-2008	29

(records prior to 1968 incomplete)
† NCAA all division record (formerly)

SINGLE SEASON TOUCHDOWNS

Player	Tds
1. Ronald Moore, 1992	39
2. Germaine Race, 2005	33
3. Germaine Race, 2006	31
4. Germaine Race, 2004	26
5. Darren Dawson, 1991	22
6. Richard Overton, 1979	21
6. Darren Dawson, 1989	21
8. Monte Weathers, 1987	20
8. Ronald Moore, 1991	20
8. Caleb Farabi, 2007	20

(records prior to 1968 incomplete)

MOST ATTEMPTS

Game: 49 Germaine Race, vs. Central Missouri, Nov. 11, 2006
Season: 356 Ronald Moore, 1992
Career: 941 Germaine Race, 2003-06

CAREER ATTEMPTS

Player	Att.
1. Germaine Race, 2003-06	941
2. Ronald Moore, 1989-92	869
3. Neal Philpot, 2001-04	827
4. Richard Overton, 1977-80	825
5. Darren Dawson, 1989-91	667
6. Caleb Farabi, 2005-2008	597
7. Bruce Stancell, 1983-86	571
8. Jeff Moreland, 1991-95	564
9. Bob Howard, 1967-69	538
10. Gene Stegeman, 1984-87	519

HIGHEST AVG./CARRY

Season: 8.96 Germaine Race, 2004
(247 carries, 2213 yards)
Career: 8.79 Monte Weathers, 1984-87
(438 carries, 3852 yards)

CAREER HIGHEST AVG./CARRY (MIN. 100 ATT.)

Player	Att.	Yds	Avg.
1. Monte Weathers, 1984-87	438	3852	8.79
2. Kenny Vernon, 1987-88	140	1182	8.44
3. Anthony Chatmon, 1998-2001	429	3189	7.43
4. Germaine Race, 2003-06	941	6985	7.42
5. Sean Scott, 1992-94	110	792	7.20

SINGLE SEASON HIGHEST AVG./CARRY (MIN. 50 ATT.)

Player	Att.	Yds	Avg.
1. Germaine Race, 2004	247	2213	8.96
2. Monte Weathers, 1987	191	1684	8.82
3. Anthony Chatmon, 2001	61	529	8.67
4. Monte Weathers, 1986	173	1430	8.27
5. Germaine Race, 2005	239	1846	7.72

HIGHEST AVG./GAME

Season: 172.3 Ronald Moore, 1992
Career: 134.3 Germaine Race, 2003-06

CAREER HIGHEST AVG./G

Player	G	Yds	Avg.
1. Germaine Race, 2003-06	52	6985	134.3
2. Steve Howard, 1970-71	21	2352	112.0
3. Darren Dawson, 1989-91	41	4565	111.3
4. Ronald Moore, 1989-92	54	5776	107.0
5. Rex Garner, 1975-76	19	1786	94.0
6. Richard Overton, 1977-80	43	4004	93.1
7. Neal Philpot, 2001-04	47	4337	92.3
8. Willie Brown, 1981-84	23	2047	89.0
9. Monte Weathers, 1984-87	43	3811	88.6
10. Bob Howard, 1967-69	29	2319	80.0

SINGLE SEASON HIGHEST AVG./G

Player	G	Yds	Avg.
1. Ronald Moore, 1992	15	2585	172.3
2. Germaine Race, 2006	12	1944	162.0
3. Germaine Race, 2004	15	2213	147.5
4. Steve Howard, 1970	11	1568	142.5
5. Germaine Race, 2005	13	1846	142.0
6. Monte Weathers, 1987	12	1684	140.3
7. Willie Brown, 1984	9	1183	131.4
8. Mike Meek, 1988	12	1530	127.5
9. Caleb Farabi, 2007	11	1370	124.5
10. Monte Weathers, 1986	12	1430	119.2

MOST 100-YARD GAMES

Season: 14 Ronald Moore, 1992 (15 games)
Career: 36 Germaine Race, 2003-06 (52 games)

PASSING

MOST YARDS GAINED

Game: 378 Anthony Abenoja, vs. NSU, Aug. 30, 2012
Season: 3065 Andy Majors, 2005
Career: 5831 Neal Philpot, 2001-04

2013 PITT STATE FOOTBALL

PUNT RETURNS

HIGHEST PUNT RETURN AVG. (SINCE 1960)

Season: 17.3 Bill Presson, 1960 (16-276)
Career: 17.3 Bill Presson, 1960 (16-276)

CAREER HIGHEST PUNT RETURN AVG. (MIN. 15 RET.)

Player	Ret.	Yds.	Avg.
1. Bill Presson, 1960	16	276	17.25
2. Ronnie West, 1990-91	39	585	15.00
3. John Brown, 2011-present	55	799	14.53
4. Harrison Kush, 2006-08	52	724	13.90
5. Monte Weathers, 1984-87	61	686	11.25

SINGLE SEASON HIGHEST PUNT RETURN AVG. (MIN. 10 RET.)

Player	Ret.	Yds.	Avg.
1. Bill Presson, 1960	16	276	17.25
2. Harrison Kush, 2006	19	325	17.11
3. Ronnie West, 1990	24	383	15.96
4. John Brown, 2012	28	430	15.36
5. John Brown, 2011	27	369	13.67

KICKOFF RETURNS

HIGHEST KICKOFF RETURN AVG. (SINCE '60)

Season: 31.9 Bill Presson, 1960 (9-287)
Career: 27.5 Levi Neville, 2000-03 (38-1044)

CAREER HIGHEST KICKOFF RETURN AVG. (MIN. 25 RET.)

Player	Ret.	Yds.	Avg.
1. Levi Neville, 2000-03	38	1044	27.47
2. Ronnie West, 1990-91	36	987	27.42
3. Chris Hudson, 1994-96	52	1414	27.19
4. Ronald Moore, 1989-92	42	1084	25.81
5. Bryan Pray, 2005-06	53	1359	25.64

SINGLE SEASON HIGHEST KICKOFF RETURN AVG. (MIN. 9 RET.)

Player	Ret.	Yds.	Avg.
1. Bill Presson, 1960	9	287	31.89
2. Levi Neville, 2001	17	526	30.94
3. Gene Wayenberg, 1956	9	272	30.22
4. Levi Neville, 2000	9	271	30.11
5. Chris Hudson, 1996	19	560	29.47

PUNTING

HIGHEST PUNTING AVG.

Season: 46.0 Brian Moorman, 1997 (41-1884)
Career: 44.0 Brian Moorman, 1995-98 (188-8267)

CAREER HIGHEST PUNTING AVERAGE (MIN. 50 PUNTS)

Player	Punts	Yds.	Avg.
1. Brian Moorman, 1995-98	188	8267	43.97
2. Jared Witter, 2007-2010	158	6582	41.66
3. Kevin Shipley, 1977-80	152	6142	40.41
4. David Mitchell, 1993-94	87	3505	40.29
5. Chris Lutz, 1999-2002	163	6352	38.97

SINGLE SEASON HIGHEST PUNTING AVERAGE (MIN. 30 ATT.)

Player	Punts	Yds.	Avg.
1. Brian Moorman, 1997	41	1884	45.95
2. Brian Moorman, 1998	38	1734	45.63
3. Brian Moorman, 1996	43	1884	43.49
4. Jared Witter, 2008	35	1493	42.65
5. Jared Witter, 2009	33	1400	42.40

DEFENSE

MOST TOTAL TACKLES (SINCE 1976)

Game: 21 Chris Brown, vs. N. Alabama, Dec. 12, 1992
Season: 172 B.J. McGivern, 1995
Career: 470 Chris Brown, 1992-95

CAREER TACKLES (SINCE '76)

Player	Tackles
1. Chris Brown, 1992-95	470
2. Josh Lattimer, 2002-05	394
3. Nate Dreiling, 2010-pres.	382
4. John Roderique, 1986-89	365
5. Mark Kilgore, 1979-82	363
6. Andrew Poling, 1996-99	359
7. Troy Wilson, 1989-92	317
8. Wes Baker, 1997-2000	314
9. Cooper Harris, 1992-94	295
10. Andy Sweet, 1990-94	287

SINGLE SEASON TACKLES (SINCE '76)

Player	Tackles
1. B.J. McGivern, 1995	172
2. John Burke, 1978	162
3. Nate Dreiling, 2010	160
4. Anthony Parks, 1995	154
5. Chris Brown, 1995	149
6. Earl Henry, 2001	146
7. John Roderique, 1989	143
8. James Gray, 1989	142
9. Nate Dreiling, 2011	139
10. Shane Tafuya, 1991	136

SINGLE GAME TACKLES

1. 21	Chris Brown, vs. North Alabama, Dec. 12, 1992
2. 20	Chris Brown, vs. Northern Colorado, Nov. 18, 1995
2. 20	Wes Baker, vs. Central Missouri, Sept. 23, 2000
4. 19	Tim Bradbury, vs. Jacksonville State, Dec. 12, 1992
4. 19	B.J. McGivern, vs. Northern Colorado, Nov. 18, 1995

MOST INTERCEPTIONS (SINCE 1974)

Game: 3 four times, most recently by:
Jeremy Neville, vs. WU, Sept. 21, 2002
Season: 9 Duke Palmer, 1992
Career: 20 Ted Adams, 1986-89

CAREER INTERCEPTIONS

Player	INT
1. Ted Adams, 1986-89	20
2. Darryl Wren, 1987-90	18
3. Duke Palmer, 1989-92	17
4. Mark Kilgore, 1979-82	13
4. John Pringle, 1979-82	13

SINGLE SEASON INTERCEPTIONS

Player	INT
1. Duke Palmer, 1992	9
2. Rob Kaelin, 1983	8
2. Ted Adams, 1986	8
4. Mark Kilgore, 1981	7
4. John Pringle, 1981	7
4. Joel Thornton, 1992	7
4. Nate Dreiling, 2011	7

MOST QUARTERBACK SACKS (SINCE 1981)

Season: 23.0 Troy Wilson, 1992
Career: 46.0 Sam Pittman, 1980-83

CAREER QUARTERBACK SACKS

Player	Sacks
1. Sam Pittman, 1980-83	46.0
2. Troy Wilson, 1989-92	45.0
3. Ryan Meredith, 2003-06	32.5
4. Ben Peterson, 1995-98	29.0
5. Aaron McConnell, 2000-03	22.0

SINGLE SEASON QUARTERBACK SACKS

Player	Sacks
1. Troy Wilson, 1991	23.0
2. Sam Pittman, 1982	22.0
3. Ron Freeman, 1981	18.0
4. Ben Peterson, 1998	14.0
5. Roman Wiehebrink, 1986	13.0

MOST PASS BREAKUPS (SINCE 1981)

Season: 17 Donnie Johnson, 1987
Career: 40 Ted Adams, 1986-89

CAREER PASS BREAKUPS

Player	PBU
1. Ted Adams, 1986-89	40
2. Travis Stepps, 1997-2001	28
2. Levi Neville, 2000-03	28
4. Donnie Johnson, 1985-88	25
5. Andrew Poling, 1996-99	21

SINGLE SEASON PASS BREAKUPS

Player	PBU
1. Donnie Johnson, 1987	17
2. Travis Stepps, 2001	16
3. Kevin Harkless, 1987	15
4. Eric Wright, 2004	14
5. Ted Harre, 1984	12
5. Ted Adams, 1986	12
5. Eric Perks, 1992	12



FARMERS INSURANCE GROUP
of companies

RUA INSURANCE AGENCY, INC.

DAVID RUA

1504 N. Broadway - Pittsburg, Kansas
Phone 231-6460

AUTO • FIRE • LIFE • COMMERCIAL

THE First NATIONAL BANK

OF GIRARD



P.O. BOX 6
GIRARD, KANSAS
(620) 724-6111 (Phone)

Website:

www.fnbgirard.com

Online Banking and Bill Pay!

2013 PITT STATE FOOTBALL

CAREER YARDS

Player	Comp.-Att.	Yards
1. Neal Philpot, 2001-04	326-678	5831
2. Andy Majors, 2002-05	352-597	5531
3. Mark Smith, 2005-08	337-521	5190
4. Mark Hittner, 1976-79	325-741	4830
5. Zack Siegrist, 1994-98	265-525	4174

SINGLE SEASON YARDS

Player	Comp.-Att.	Yards
1. Andy Majors, 2005	198-346	3065
2. Mark Smith, 2008	161-253	2348
3. Anthony Abenoja, 2012	169-280	2330
4. Zac Dickey, 2011	149-248	2290
5. Neal Philpot, 2004	96-170	1825

SINGLE GAME YARDS

Player	C-Att.	Tds
1. 378 Anthony Abenoja vs. Northeastern State, Aug. 30, 2012	26-36	3
2. 358 Andy Majors vs. Southwest Baptist, Oct. 15, 2005	20-28	2
3. 336 Anthony Abenoja vs. Central Missouri, Oct. 6, 2012	23-38	2
4. 334 Andy Majors vs. Delta State, Aug. 27, 2005	23-49	2
5. 324 Mark Smith vs. Emporia State, Nov. 10, 2007	19-24	5

MOST TOUCHDOWNS

Game: 4	five times, most recently: John McCoy, vs. Emporia State, Oct. 17, 2009
Season: 25	Neal Philpot, 2004
Career: 61	Neal Philpot, 2001-04

CAREER TOUCHDOWNS

Player	Tds
1. Neal Philpot, 2001-04	61
2. Andy Majors, 2002-05	43
3. Jay Padden, 1987-90	40
3. Zack Siegrist, 1994-98	40
3. Mark Smith, 2005-08	40

SINGLE SEASON TOUCHDOWNS

Player	Tds
1. Neal Philpot, 2004	25
2. Andy Majors, 2005	20
3. Jay Padden, 1990	19
3. Andy Majors, 2004	19
5. Mark Smith, 2008	18

MOST ATTEMPTS

Game: 49	Andy Majors, vs. Delta State, Aug. 27, 2005
Season: 346	Andy Majors, 2005
Career: 741	Mark Hittner, 1976-79

CAREER ATTEMPTS

Player	Att.
1. Mark Hittner, 1976-79	741
2. Neal Philpot, 2001-04	678
3. Andy Majors, 2002-05	597
4. Zack Siegrist, 1994-98	525
5. Mark Smith, 2005-08	521

SINGLE SEASON ATTEMPTS

Player	Att.
1. Andy Majors, 2005	346
2. Anthony Abenoja, 2012	280
3. Mark Smith, 2008	253
4. Zac Dickey, 2011	248
5. Mark Hittner, 1977	218

MOST COMPLETIONS

Game: 26	Anthony Abenoja vs. Northeastern State, Aug. 30, 2012
Season: 198	Andy Majors, 2005
Career: 352	Andy Majors, 2002-05

CAREER COMPLETIONS

Player	Comp.
1. Andy Majors, 2002-05	352
2. Mark Smith, 2005-08	337
3. Neal Philpot, 2001-04	326
4. Mark Hittner, 1976-79	325
5. Zack Siegrist, 1994-98	265

SINGLE SEASON COMPLETIONS

Player	Comp.
1. Andy Majors, 2005	198
2. Anthony Abenoja, 2012	169
3. Mark Smith, 2008	161
4. Zac Dickey, 2011	149
5. Andy Majors, 2004	113

HIGHEST COMPLETION PCT.

Season: .681	Andy Majors, 2004 (113-166)
Career: .647	Mark Smith, 2005-08 (337-521)

CAREER COMPLETION PERCENTAGE (MIN. 250 ATT.)

Player	Comp.-Att.	Pct.
1. Mark Smith, 2005-2008	337-521	.6468
2. Anthony Abenoja, 2011-pres.	184-309	.5955
3. Andy Majors, 2002-05	352-597	.5896
4. Zac Dickey, 2010-11	240-436	.5505
5. Jay Padden, 1987-90	233-440	.5295

SINGLE SEASON COMPLETION PERCENTAGE (MIN. 100 ATT.)

Player	Comp.-Att.	Pct.
1. Andy Majors, 2004	113-166	.6807
2. Geno Waters, 2006	86-129	.6667
3. Mark Smith, 2008	161-253	.6363
4. Mark Smith, 2007	111-176	.6306
5. Anthony Abenoja, 2012	169-280	.6035

HIGHEST AVG./COMPLETION

Season: 21.5	Lateef Walker, 1999 (36-774)
Career: 19.0	Lateef Walker, 1998-2001 (70-1329)

TOTAL OFFENSE

MOST TOTAL YARDS

Game: 430	Andy Majors, vs. SBU, Oct. 15, 2005
Season: 4028	Andy Majors, 2005
Career: 10168	Neal Philpot, 2001-04

CAREER MOST TOTAL YARDS

Player	Pass	Rush	Total
1. Neal Philpot, 2001-04	5831	4337	10168
2. Andy Majors, 2002-05	5531	2336	7867
3. Mark Smith, 2005-08	5190	2367	7554
4. Germaine Race, 2003-06	0	6985	6985
5. Ronald Moore, 1989-92	0	5776	5776

SINGLE SEASON MOST TOTAL YARDS

Player	Pass	Rush	Total
1. Andy Majors, 2005	963	3065	4028
2. Zac Dickey, 2011	2290	1165	3455
3. Mark Smith, 2008	2348	968	3316
4. Neal Philpot, 2004	1825	1398	3223
5. Neal Philpot, 2003	1663	1144	2807

SINGLE GAME MOST TOTAL YARDS

Yds	Player	Rush	Pass
1. 430	Andy Majors vs. Southwest Baptist, Oct. 15, 2005	72	358
2. 413	Zac Dickey vs. Northwest Missouri, Dec. 3, 2011*	147	266
3. 401	Neal Philpot vs. Emporia State, Oct. 9, 2004	172	229
4. 393	Andy Majors vs. Delta State, Aug. 27, 2005	59	334
5. 379	Ronald Moore vs. Portland State, Dec. 5, 1992	379	0
5. 379	Anthony Abenoja vs. Northeastern State, Aug. 30, 2012	1	378

MOST TOTAL OFFENSIVE PLAYS

Season: 539	Andy Majors, 2005
Career: 1505	Neal Philpot, 2001-04

HIGHEST AVG./GAME

Season: 287.7	Andy Majors, 2005 (4028 yards in 14 games)
Career: 216.3	Neal Philpot, 2001-04 (10168 yards in 47 games)

RECEIVING

MOST YARDS GAINED

Game: 238	Kendall Fisher, vs. Emporia State, Oct. 17, 2009
Season: 1495	Ronnie West, 1991
Career: 2521	Ronnie West, 1990-91

CAREER YARDS

Player	Rec.	Yards
1. Ronnie West, 1990-91	123	2521
2. John Brown, 2011-pres.	124	2189
3. Gene Wayenberg, Jr., 1980-81	75	1827
4. Jermaine Carpenter, 2003-04	69	1671
5. Marques Nelson, 2005-08	82	1582

SINGLE SEASON YARDS

Player	Rec.	Yards
1. Ronnie West, 1991	74	1495
2. John Brown, 2011	61	1216
3. Gene Wayenberg, Jr., 1981	48	1124
4. Jermaine Carpenter, 2004	49	1115
5. Ronnie West, 1990	49	1026

Barto's Idle Hour

Frontenac, KS

(620) 232-9813 | (620) 232-9834

Chicken • Steaks

Polka Dancing Friday/Saturday

Open 4 p.m. Tuesday - Saturday

WINE • SPIRITS • IMPORT BEERS • KEGS

Centennial Retail Liquor

Party Shop Featuring Pop, Ice & Mixes

2308 S. Rouse
Pittsburg, Ks 66762

620-232-3700

Owners • Gay & Kent Grisham

Now Open
Sundays
12 - 8 p.m.

Now Open
Sundays
12 - 8 p.m.





Team Threads

Custom Screen Print, Embroidery & Logo Wear

119 W. Maple, Columbus, KS 66725 – teamthreads@hotmail.com
620-429-4402

SEK URGENT CARE

IMMEDIATE CARE & INJURY CENTER

OPEN 7 DAYS A WEEK

Where Family and Time Matter



OCCUPATIONAL CARE NETWORK SERVICES:

- Drug Screening
- Physicals
- DOT
- Audiology
- Vision testing
- X-Ray
- Functional Capacity Testing
- Smoking Cessation Program
- Weight Loss Management
- PFT
- Breath Alcohol Testing

620-231-8003



PREVENTATIVE & NON LIFE THREATENING INJURIES & ILLNESS

- Cuts/Lacerations/S titches
- Blood Pressure Checks
- Asthma
- Cough and Colds
- Bronchitis
- Infections
- Zip Pass Scheduling
- Allergies
- Nausea & Vomiting
- Rashes
- Sinus Infections
- Sore Throats
- Primary Care
- And Many Other Medical Services



WWW.SEKURGENTCARE.COM

• Located in Meadowbrook Mall •



2013 PITT STATE FOOTBALL

SINGLE GAME YARDS

Yds.	Player	Rec.	TDs
1. 238	Kendall Fisher vs. Emporia State, Oct. 17, 2009	6	3
2. 215	Gene Wayenberg, Jr. vs. Missouri Western, Nov. 1, 1980	8	1
3. 195	Jermaine Carpenter vs. Emporia State, Oct. 9, 2004	4	2
4. 190	Ronnie West vs. Emporia State, Nov. 2, 1991	8	2
5. 189	Ronnie West vs. North Dakota State, Dec. 1, 1990	8	2

MOST TOUCHDOWNS

Game: 4	Bruce Roach, vs. Washburn, Oct. 29, 1960; Scott Bailey, vs. FHSU, Oct. 15, 1988
Season: 16	Jermaine Carpenter, 2004
Career: 27	Ronnie West, 1990-91

CAREER TOUCHDOWNS

Player	TDs
1. Ronnie West, 1990-91	27
2. Jermaine Carpenter, 2003-04	23
3. John Brown, 2011-pres.	20
4. Blaise Bauer, 1985-88	18
5. Marques Nelson, 2005-08	15

SINGLE SEASON TOUCHDOWNS

Player	TDs
1. Jermaine Carpenter, 2004	16
2. Ronnie West, 1991	14
3. Ronnie West, 1990	13
4. John Brown, 2011	12
5. Bruce Roach, 1960	10
5. Gene Wayenberg, Jr., 1981	10

MOST RECEPTIONS

Game: 13	John Brown, vs. Missouri Western, Oct. 20, 2012
Season: 74	Ronnie West, 1991
Career: 124	John Brown, 2011-pres.

CAREER RECEPTIONS

Player	Rec.
1. John Brown, 2011-pres.	124
2. Ronnie West, 1990-91	123
3. Caleb Farabi, 2005-08	101
4. Wilton Jones, 1976-79	92
5. Marques Nelson, 2005-08	89

SINGLE SEASON RECEPTIONS

Player	Rec.
1. Ronnie West, 1991	74
2. John Brown, 2012	63
3. John Brown, 2011	61
4. Ray Staten, 1992	54
5. Ronnie West, 1990	49
5. Jermaine Carpenter, 2001	49

SCORING

MOST TOTAL POINTS

Game: 32	two times, most recently by: Ronald Moore, vs. Portland St., Dec. 5, 1992
Season: 251	Ronald Moore, 1992
Career: 480	Ronald Moore, 1989-92

CAREER SCORING

Player	TD	1XP	2XP	FG	Pts.
1. Germaine Race, 03-06 †	109	0	2	0	658
2. Ronald Moore, 89-92	78	0	6	0	480
3. Nathan Alleman, 03-06	0	314	0	29	401
4. Darren Dawson, 88-91	61	0	0	0	366
5. Neal Philpot, 01-04	60	0	1	0	362

† NCAA all division record (former)

SINGLE SEASON SCORING

Player	TD	1XP	2XP	FG	Pts.
1. Ronald Moore, 1992	41	0	4	0	254
2. Germaine Race, 2005	33	0	0	0	198
3. Germaine Race, 2006	31	0	1	0	188
4. Germaine Race, 2004	27	0	1	0	164
5. Nathan Alleman, 2004	0	109	0	8	133

MOST TOUCHDOWNS

Game: 5	five times, most recently by: John Brown, vs. Missouri Southern, Nov. 12, 2011
Season: 41	Ronald Moore, 1992
Career: 109	Germaine Race, 2003-06 †

† NCAA all division record

CAREER TOUCHDOWNS

Player	TDs
1. Germaine Race, 2003-06	109
2. Ronald Moore, 1989-92	78
3. Darren Dawson, 1988-91	61
4. Anthony Chatmon, 1998-2001	52
5. Richard Overton, 1977-80	50

SINGLE SEASON TOUCHDOWNS

Player	TDs
1. Ronald Moore, 1992	41
2. Germaine Race, 2005	33
3. Germaine Race, 2006	31
4. Germaine Race, 2004	27

SINGLE GAME TOUCHDOWNS

1. 5	Richard Overton, vs. MWSU, Nov. 3, 1979
1. 5	Ronald Moore, vs. N.Dakota St., Nov. 27, 1992
1. 5	Ronald Moore, vs. Portland St., Dec. 5, 1992
1. 5	Justin Johnson, vs. MSSU, Sept. 27, 1997
1. 5	John Brown, vs. MSSU, Nov. 12, 2011

MOST TOTAL POINTS/PLACEKICKER

Game: 18	Josh Barcus, vs. WU, Nov. 14, 1998 (3 FG, 9 PAT)
Season: 133	Nathan Alleman, 2004
Career: 401	Nathan Alleman, 2003-06

CAREER SCORING BY A PLACEKICKER

Player	XP	FG	Total
1. Nathan Alleman, 2003-06	314	29	401
2. James Jenkins, 1988-91	195	35	300
3. Josh Barcus, 1995-98	155	44	287
4. Jared Witter, 2007-2010	142	23	211
5. Mike Bowman, 1985-87	117	27	198

SINGLE SEASON SCORING BY A KICKER

Player	XP	FG	Total
1. Nathan Alleman, 2004	109	8	133
2. Nathan Alleman, 2005	88	11	121
3. Chase McCoy, 2011	65	18	119
4. James Jenkins, 1990	63	12	99
5. Mike Bowman, 1986	53	13	92

MOST FIELD GOALS MADE

Game: 18	Josh Barcus, vs. UCM, Oct. 15, 1998
Season: 18	Chase McCoy, 2011
Career: 44	Josh Barcus, 1995-98

CAREER FIELD GOALS MADE

Player	FG
1. Josh Barcus, 1995-98	44
2. James Jenkins, 1988-91	35
3. Nathan Alleman, 2003-06	29
4. Mike Bowman, 1985-87	27
5. Jared Witter, 2007-2010	23

SINGLE SEASON FIELD GOALS MADE

Player	FG
1. Chase McCoy, 2011	18
2. Josh Barcus, 1998	16
3. Josh Barcus, 1995	13
3. Mike Bowman, 1986	13
3. Daniel Chappell, 2002	13

MOST CONSECUTIVE FGs MADE

11	Josh Barcus, Sept. 19, 1998 to Oct. 24, 1998
----	--

MOST PATS MADE

Game: 13	N. Alleman, vs. Missouri S&T, Sept. 25, 2004
Season: 109	Nathan Alleman, 2004
Career: 314	Nathan Alleman, 2003-06 †

† NCAA Division II Record

CAREER PATS MADE

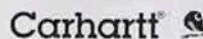
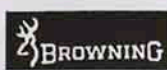
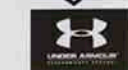
Player	PAT
1. Nathan Alleman, 2003-06	314
2. James Jenkins, 1988-91	195
3. Josh Barcus, 1995-98	155
4. Jeff Wood, 1992-94	120
5. Mike Bowman, 1985-87	117

SINGLE SEASON PATS MADE

Player	PAT
1. Nathan Alleman, 2004	109
2. Nathan Alleman, 2005	88
3. Nathan Alleman, 2006	70
4. Chase McCoy, 2011	65
5. James Jenkins, 1990	63

MOST CONSECUTIVE PATS MADE

123	Nathan Alleman, Oct. 8, 2005 to Dec. 2, 2006
-----	--



1806 N. Broadway
Pittsburg, KS 66762

620-231-7740
1-800-TRY LEVI





New Century

Comprehensive Orthopedic Surgery
& Sports Medicine Services

New Century Orthopedics is a full service orthopedics group based in Pittsburg, Kansas, and servicing surrounding areas. The staff offers operative and non-operative treatment of arthritis, fractures, sports injuries, joint replacement, shoulder and knee injuries, foot and ankle problems, wrist and hand disorders, spinal problems and osteoporosis. New Century accepts all major insurances and workers compensation claims.



ON-SITE SERVICES

- Ambulatory Surgery Center
- Physical Therapy Department
- Certified Athletic Trainers
- Open MRI
- Bone Densitometry



Michael Zafuta, M.D.
Orthopedic Surgeon

2013 PITT STATE FOOTBALL

PSU ATHLETICS STAFF



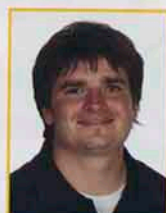
CAYTE BILLMAN

Asst. Softball Coach



GLENN BLISS

Play Clock Operator



STEVE BRAZEAL

Operations Assistant



SCOTT BROYLES

Equipment Manager



TODD BRYNDS

Athletic Training



HENRY BUSEY

PSU Team Filmer



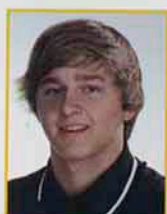
VINCE DAINO

Video Board Operator



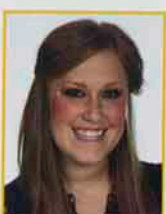
AMANDA DAVIED

Asst. Women's Bkh. Coach



TYLER DAWSON

Athletics Assistant



LORI DYER

Athletics Assistant



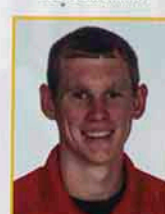
GRANT EBBERT

Athletics Assistant



ELIZABETH ECONOMON

Softball Coach



AARON FLOOD

Athletics Assistant



KATELYN FLOOD

Athletics Assistant



CADE GOSCH

Media Relations G.A.



LINDA GRAHAM

Spirit Squad Coach



GAVIN HOWSER

Athletics Assistant



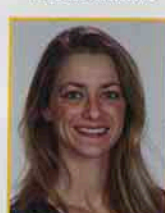
PRESTON INGRAM

Asst. Men's Basketball Coach



TIM JAMES

Game Clock Operator



NATALIE JEPSON-KUNDIGER

Dance Team Coach



KEVIN KALM

Asst. Athletic Trainer



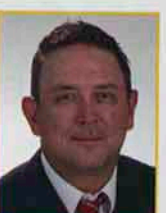
KARL KUNKEL

Faculty Representative



LANE LORD

Women's Basketball Coach



TODD LOVELAND

Golf Coach



BRIAN MANTOOTH

Asst. Track & Field Coach



ERIC MILLER

Asst. Baseball Coach



VERN MORTON

Scoreboard Operator



JENNY MUELLER

Asst. Volleyball Coach



ALEX MUFF

Athletics Assistant



KEVIN MUFF

Men's Basketball Coach



MATT MURRAY

Baseball Coach



DARREN PRATHER

Public Address Announcer



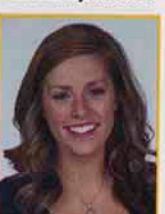
NICK PHILLIPS

Asst. Baseball Coach



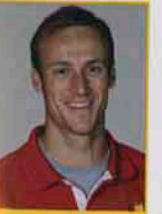
TIM PIERCE

Operations Assistant



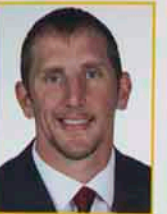
CALLIE RONAN

Athletics Assistant



KYLE RUTLEDGE

Asst. Track & Field Coach



RYAN STOCK

Asst. Men's Basketball Coach



IBRAHEEM SUBERU

Volleyball Coach



DOUG WHITTEN

Marching Band



MARY WOLFE

Ticket Operations Asst.



MICHAEL ZAFUTA

Team Physician

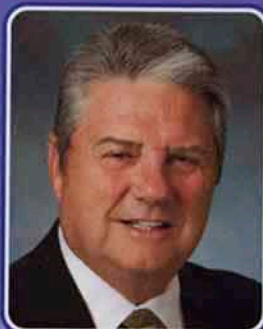
An Independently Owned and Operated Member of Coldwell Banker Real Estate Corporation.

SOLD

**COLDWELL
BANKER**

**JIM BISHOP
& ASSOCIATES
620-231-4370**

Serving Pittsburg, Kansas
and the surrounding areas
as a resource for all
MLS listings within the
Pittsburg Market Area.



**Jim Bishop
and Associates**
cell (620) 875-1821

TAKE A VIRTUAL
TOUR ONLINE
RIGHT NOW!



JIMBISHOP.COM

**COLDWELL
BANKER**

302 E. Centennial Dr.
Pittsburg, Kansas 66762
local: (620) 231-4370
toll free: 800-765-7080
www.jimbishop.com



Sandy Emerson
(620) 249-4841



Gail McClaskey
(620) 249-1086



Cindy Loy
(620) 235-9177



Amy Loy Herring
(620) 687-1241



Tyler Casey
(620) 249-5767



Bobbi Rogers
(620) 249-1180

For the latest
info on all MLS
Properties in
the Pittsburg
area, visit our
website today!



Carol Hammerbacher
(620) 249-0648



Jenni Hall
(620) 575-6411



Doug Hitchcock
(620) 232-4795



Amanda Vandevender
Office Manager



Jim Bishop
(620) 875-1821

Voted No. 1 Real Estate Company in 2012

EVANS MOTORS

• SINCE 1935 •



**proud members of the
Gorilla Courtesy Car Program**

**PITTSBURG Ks. SOUTH 69 JCT / 400 JCT
GIRARD, KS 66743
PH: (866) 447-7815**



GO PITT!

Countryside Dentistry



Wylie Bell, DDS

232-CARE

**1034 U.S. 69
Frontenac, KS**

Show off your smile.

ClearCorrect



*"Entrust your
family with our
family. Where
we create
bigger, brighter,
more beautiful
smiles
everyday."*



EMERGENCY INFORMATION

Diagram of the 2011-2012 Seating Chart:

- Visiting Team Bench:** Located on the left side of the field. The seating is divided into sections labeled with letters: K, L, M, N, O, P, Q, R, S, T, U, V, W, X, Y, Z. The skyboxes are located above this bench.
- Home Team Bench:** Located on the right side of the field. The seating is divided into sections labeled with letters: A, B, C, D, E, F, G, H, I, J, K, L, M, N, O, P, Q, R, S, T, U, V, W, X, Y, Z. The skyboxes are located below this bench.
- Skyboxes:** Located above the visiting team bench and below the home team bench. They are color-coded: red for the visiting team, green for the home team, and yellow for the skyboxes.
- Field:** The field is green with white yard lines. The 50-yard line is marked in the center. The end zones are red and yellow.
- End Zones:** The left end zone is labeled "PITT STATE" and the right end zone is labeled "GORILLAS".

If necessary, the public address announcer will provide instructions for evacuating the stadium in the event of severe weather, fire, or another emergency situation.

Stadium East First North
Stadium East Second North
Stadium East Second South
Stadium East Third North
Stadium East Third South
Stadium East Fourth North
Stadium East Fourth South
Stadium East Elevator
East Second-Wall by Elevator

911	Stadium West Second North	911
911	Stadium West Second South	911
911	Stadium West Third Central	911
911	Stadium West Elevator	911
911	West Stadium Press Box	Phone
911		
911		
911		
Phone		

East Stadium
Level 1: North across from restroom
Level 1: Central across from elevator
Level 1: South across from restroom
Level 2: North near handicapped seating
Level 2: Near Elevator
Level 2: South near handicapped seating
Level 3: North by stairwell
Level 3: Near Elevator
Level 3: South by stairwell
Level 4: Near Elevator
Skyboxes
Concession Stands

West Stadium
Level 1: Concession Stands
(Fire Alarm Pull Boxes are located on the North & South Ends and by Ticket Booths)
Level 2: North
(Fire Alarm Pull Box located near extinguisher)
Level 2: Two Centrally Located
(Fire Alarm Pull Box located near stairs)
Level 2: South
(Fire Alarm Pull Box located near extinguisher)
Level 3: Central
(Fire Alarm Pull Box located near extinguisher)
Skyboxes and Rua Box
Concession Stands, West Pantry on 2nd Level

GORILLA BOOKSTORE

The Gorilla Bookstore is the official Pitt State bookstore, carrying all your Gorilla clothing, gift items and classroom needs.

Order online at www.pitstate.bkstore.com
or call (620) 231-1930

*Best wishes to all Gorilla Athletes and Coaches
from the Gorilla Bookstore!*



Proud supporters of GORILLA FOOTBALL!



Dowe Quick



1953-2013

Celebrating 60 Years

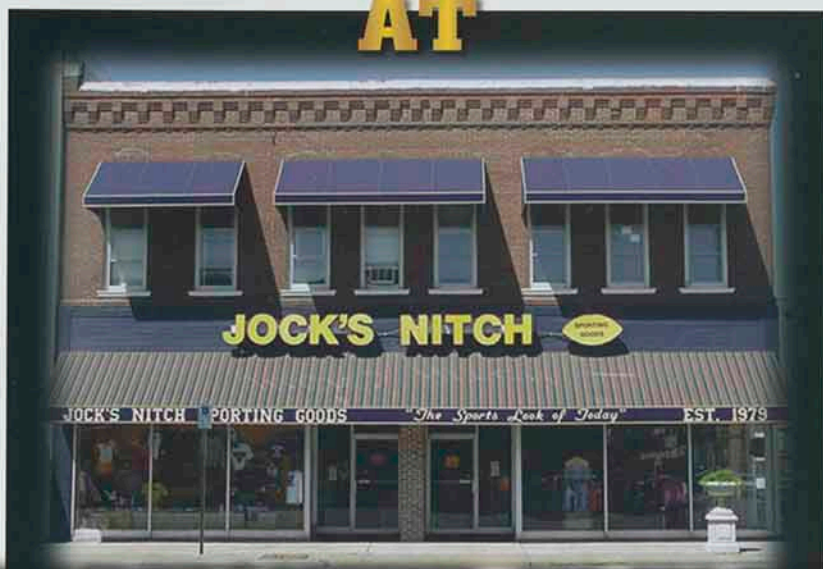


www.koamtv.com

COME VISIT

GORILLA NATION

AT



523 N BROADWAY 620-231-9410

SPORTSWEAR

HATS

LICENSE PLATES

CAR FLAGS

BANNERS

GLASSWARE

FOOTBALLS

JEWELRY

LICENSE FRAMES

STICKERS

CLOCKS

KEYCHAINS

WWW.JOCKSNITCH.com



Like us on Facebook
"Jock's Nitch Sporting Goods"



Follow us on Twitter
@JocksNitchPSU

JOCK'S NITCH

Infants, Toddlers, Youth,

Mens & Womens Clothing, T-Shirts,

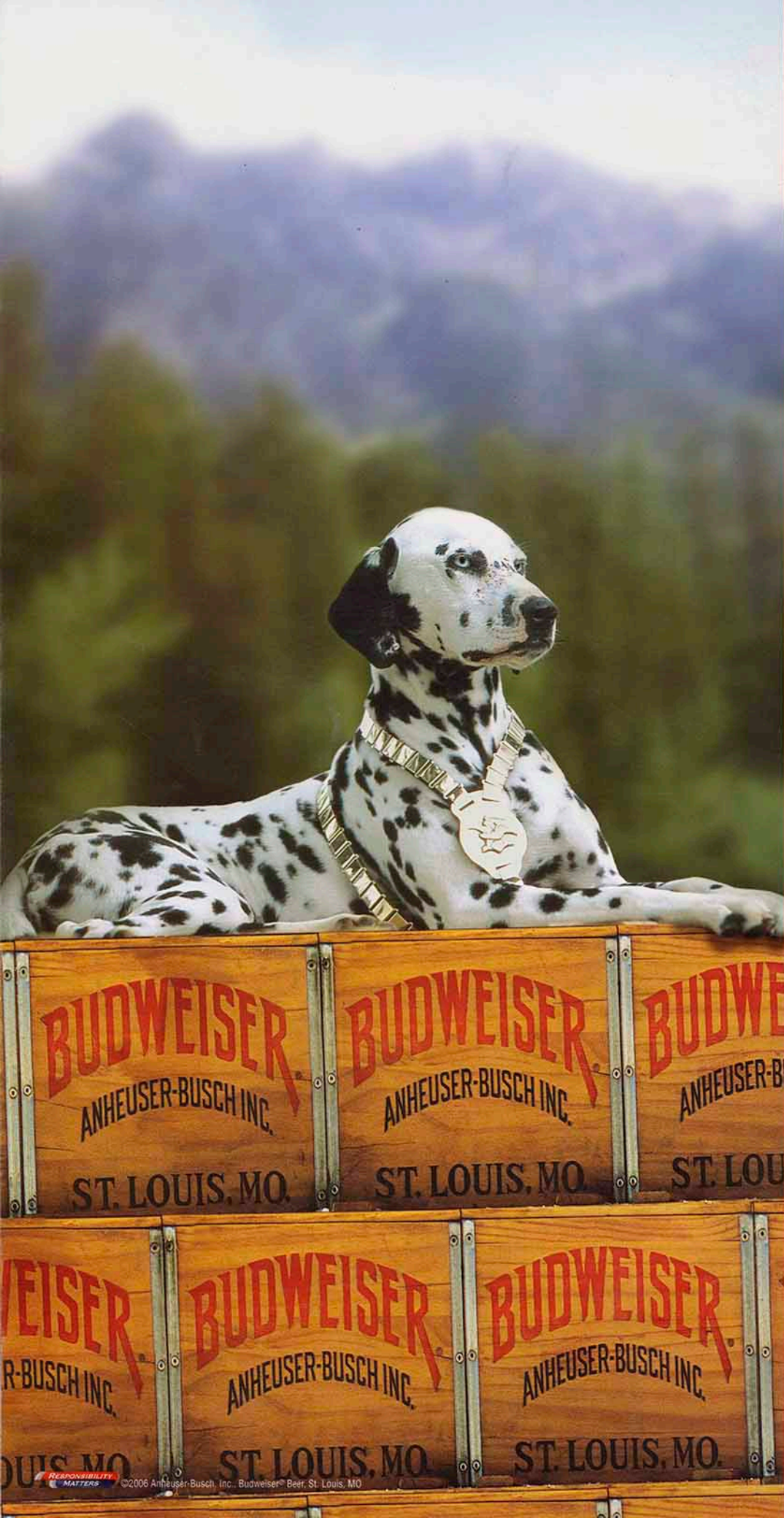
Sweatshirts, Polos, Jackets, Embroidery,

Custom Screen Printing & Much More!



Monday thru Saturday 9AM-7PM

Sunday 12PM-5PM



Budweiser

Your Commitment is Spot On

*We at Eagle Beverage,
proud distributor of
Budweiser, appreciate your
commitment to enjoying
our products responsibly.*

*We proudly support
Pittsburg State University.*

