

Pittsburg State University

Pittsburg State University Digital Commons

Paper and Posters Presentations

2017 Research Colloquium

4-2017

Teaching and Leadership Website Project

Praveen Kumar Guraja
Pittsburg State University

Follow this and additional works at: https://digitalcommons.pittstate.edu/papers_2017



Part of the [Education Commons](#)

Recommended Citation

Guraja, Praveen Kumar, "Teaching and Leadership Website Project" (2017). *Paper and Posters Presentations*. 5.
https://digitalcommons.pittstate.edu/papers_2017/5

This Presentation is brought to you for free and open access by the 2017 Research Colloquium at Pittsburg State University Digital Commons. It has been accepted for inclusion in Paper and Posters Presentations by an authorized administrator of Pittsburg State University Digital Commons. For more information, please contact digitalcommons@pittstate.edu.

QMC PROJECT PRESENTATION

TEACHING AND LEADERSHIP WEBSITE

Submitted to:
Professor Eli Aba

By:
Praveen Kumar Guraja

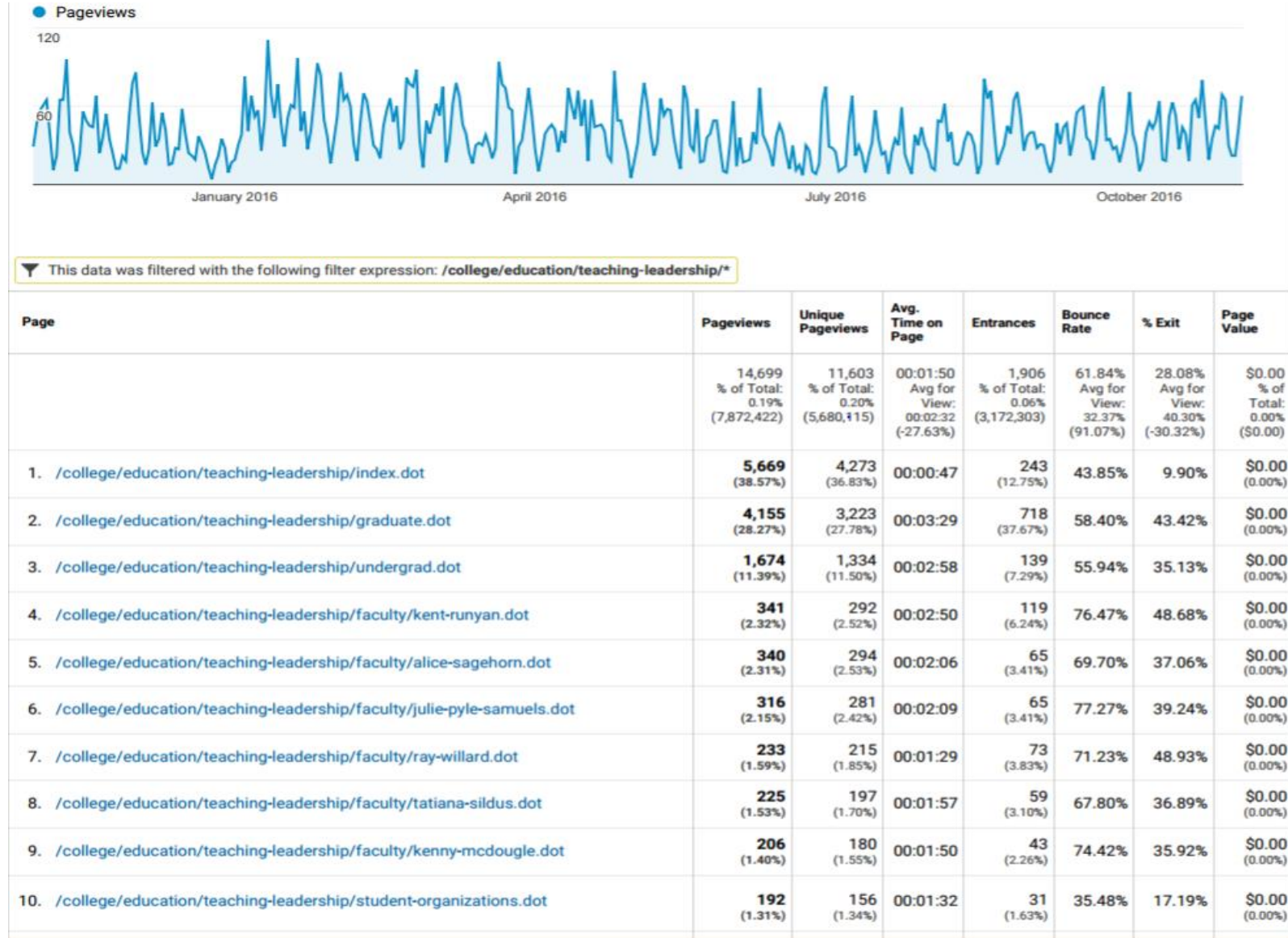
Abstract

- This project explores the data that report on Pittsburg State University department of Teaching and Leadership website and its page visitors.
- Pittsburg State University is one of the small universities in the Midwest in the United States.
- This project is done using different quality management tools. The primary tools used in the project are Pareto chart and P- Chart.
- This is a quantitative type of research that deals with statistical data taken from google analytics software.

Introduction

- Through this research, we tried to check the flow of visitors for one year and out of those total visitors, we also tried to identify unique page viewers and compare the data using various quality tools.
- This research attempted to find what are the times of the year that have several users and what information they are trying to search.
- There are different links on the website and the research tried to know the number of people who are navigating another link using the index page.
- This research attempted to investigate more on Index page, Graduate programs and Undergraduate programs.

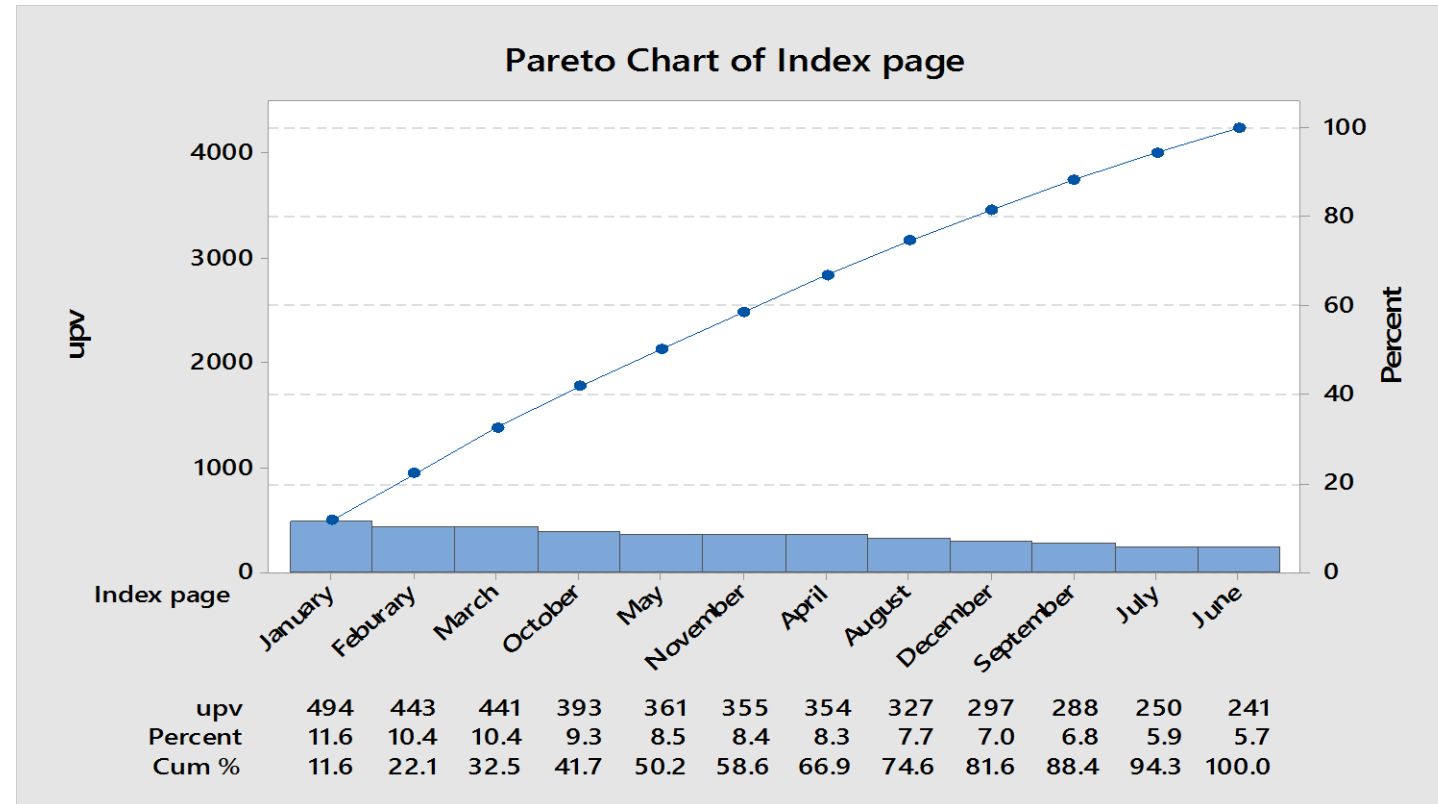
Sample Data



Internal Department Links

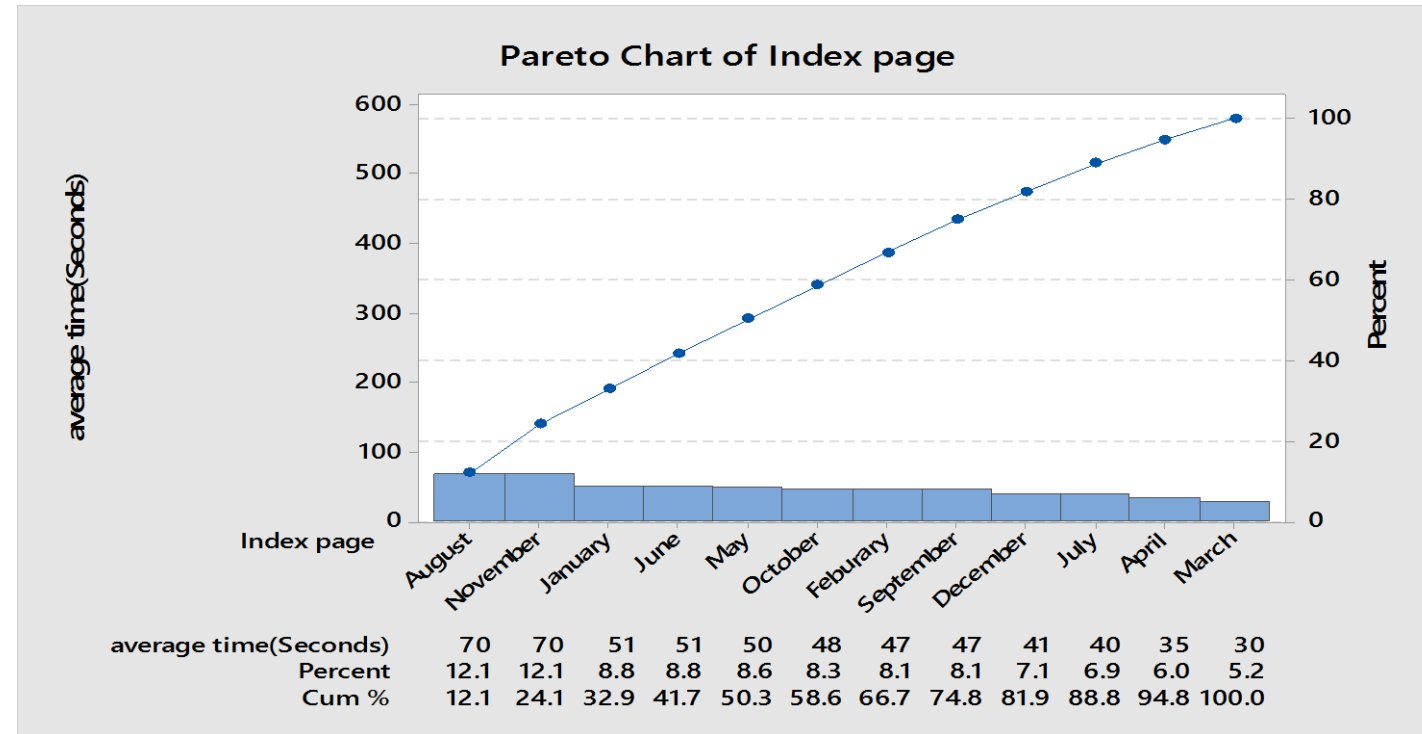
1	Internal department links
2	/academic-programs/educational-leadership-graduate-program
3	/academic-programs/early-childhood-education-through-third-grade-major
4	/academic-programs/education-school-health-graduate-program
5	/academic-programs/elementary-teaching-graduate-program
6	/academic-programs/early-childhood-development-emphasis
7	/academics/academic-programs.dot?dept=teachingandleadership
8	/academic-programs/english-for-speakers-of-other-languages-minor
9	/academic-programs/elementary-teaching-graduate-emphasis
10	/academics/academic-programs.dot?keyword=Education&submitit=Go
11	/academics/academic-programs.dot?keyword=teaching&submitit=Go
12	/academics/academic-programs.dot?keyword=special+education&submitit=Go
13	/academic-programs/elementary-education-k-6-major
14	/academic-programs/special-education-teaching-graduate-program
15	/academics/academic-programs.dot?keyword=Education+&submitit=Go
16	/academic-programs/secondary-teaching-licensure-graduate-program
17	/academics/academic-programs.dot?keyword=Elementary+Education&submitit=Go
18	/academic-programs/special-education-teaching-k-12-high-incidence-low-incidence-graduate-program
19	/academics/academic-programs.dot?keyword=elementary+education&submitit=Go
20	/academics/academic-programs.dot?keyword=Special+Education&submitit=Go
21	/academics/academic-programs.dot?keyword=teacher&submitit=Go
22	/academic-programs/special-education-teaching-k-12-high-incidence-low-incidence-graduate-emphasis
23	/academics/academic-programs.dot?keyword=early+childhood&submitit=Go
24	/academic-programs/autism-spectrum-disorders-certificate
25	/academic-programs/reading-graduate-program
26	/academic-programs/secondary-education-graduate-emphasis

Index Page Unique Pageviews



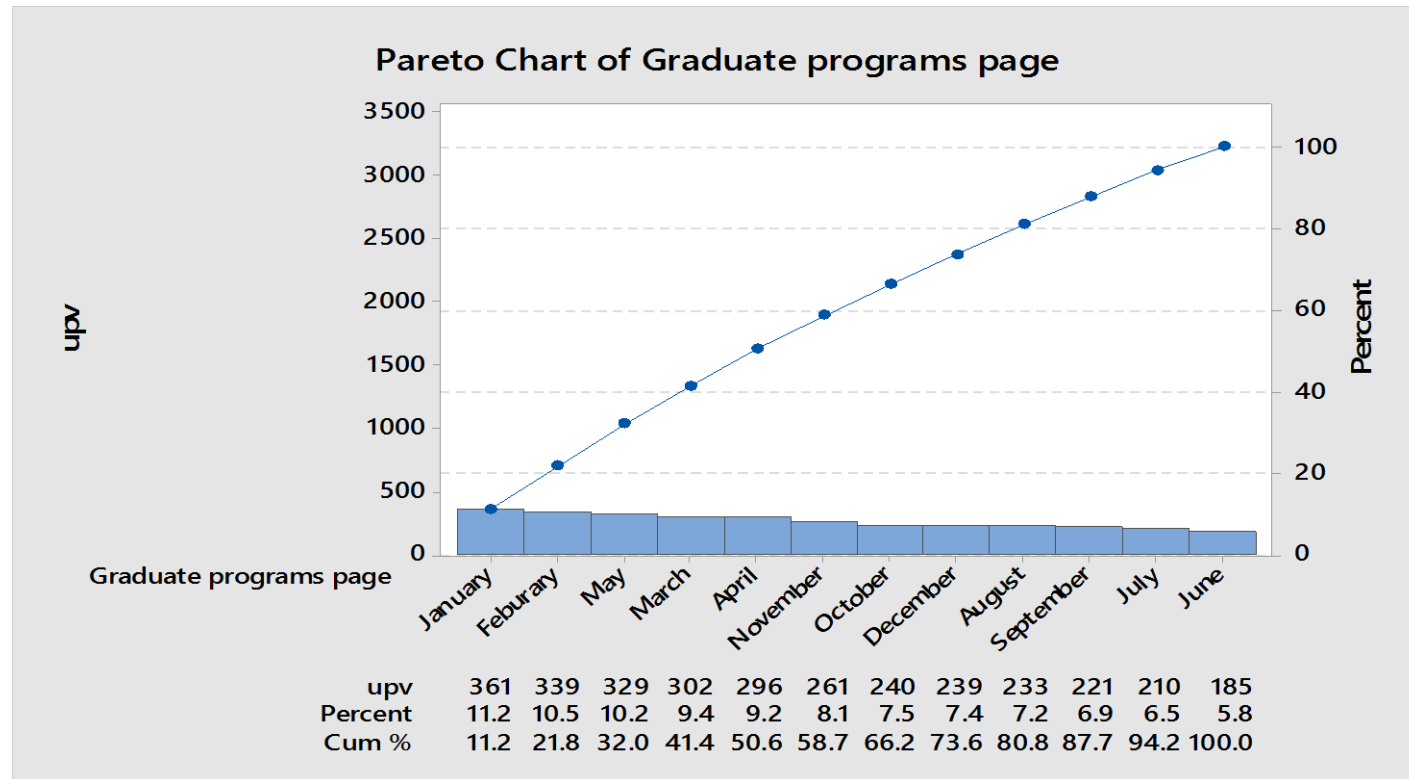
The above Pareto chart shows that first two months of unique pageviews for index page are the most vital of all, that is in the month of January and February that was accessed by 494 and 443 people respectively. June is the month that we would have improve in terms

Index Page Average Time Spent In Seconds



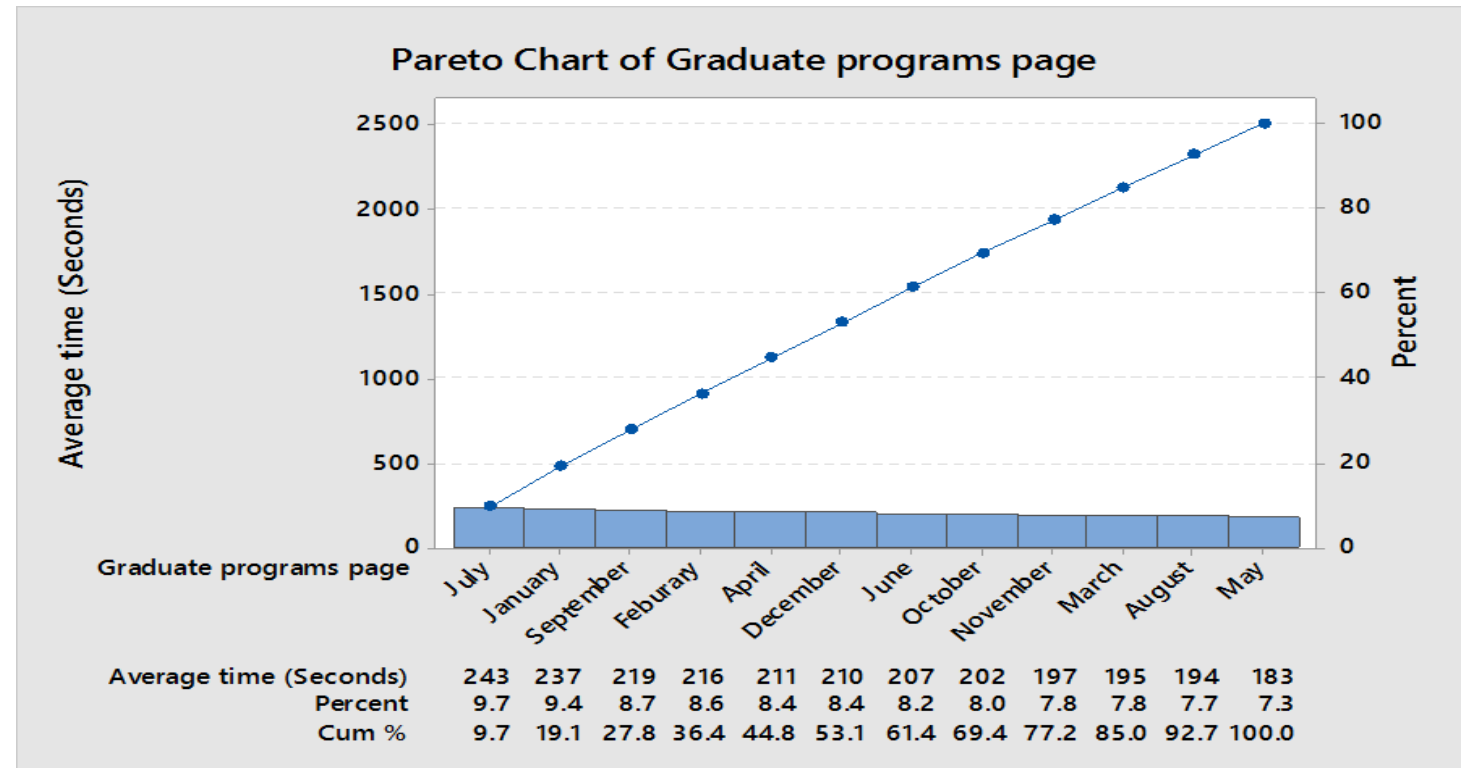
The above Pareto chart shows that August and November are the month people accessed the index page and spent more time on the page. 70 seconds is the significant time spent by people in viewing the page. March is the month people spent least amount of time on the index page.

Graduate Programs Page Unique Pageviews



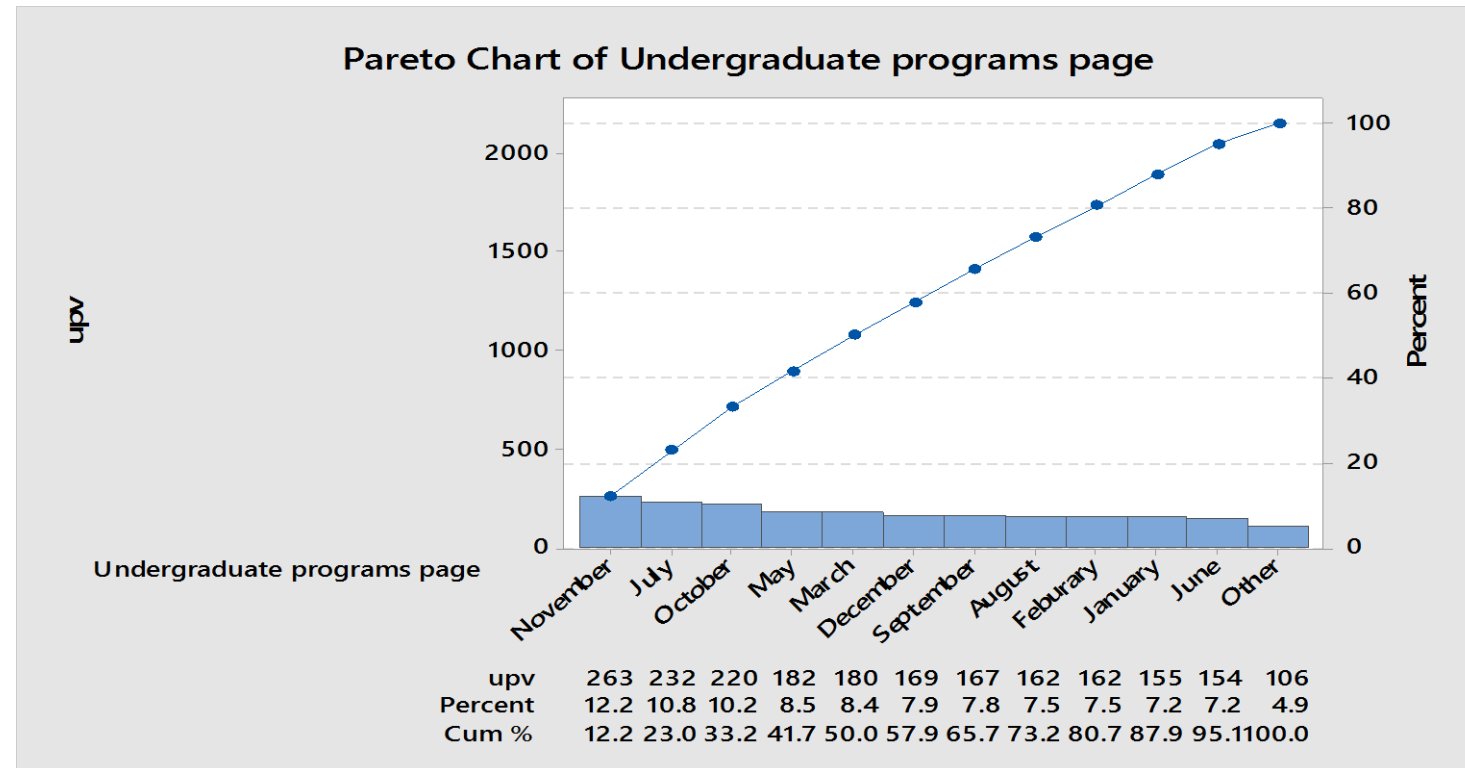
The above Pareto chart shows that first two months of unique pageviews for graduate programs page are the most vital of all, that is in the month of January and February that was accessed by 361 and 339 people respectively. June is the month that we would have improve in terms of having more numbers.

Graduate Programs Page Average Time Spent In Seconds



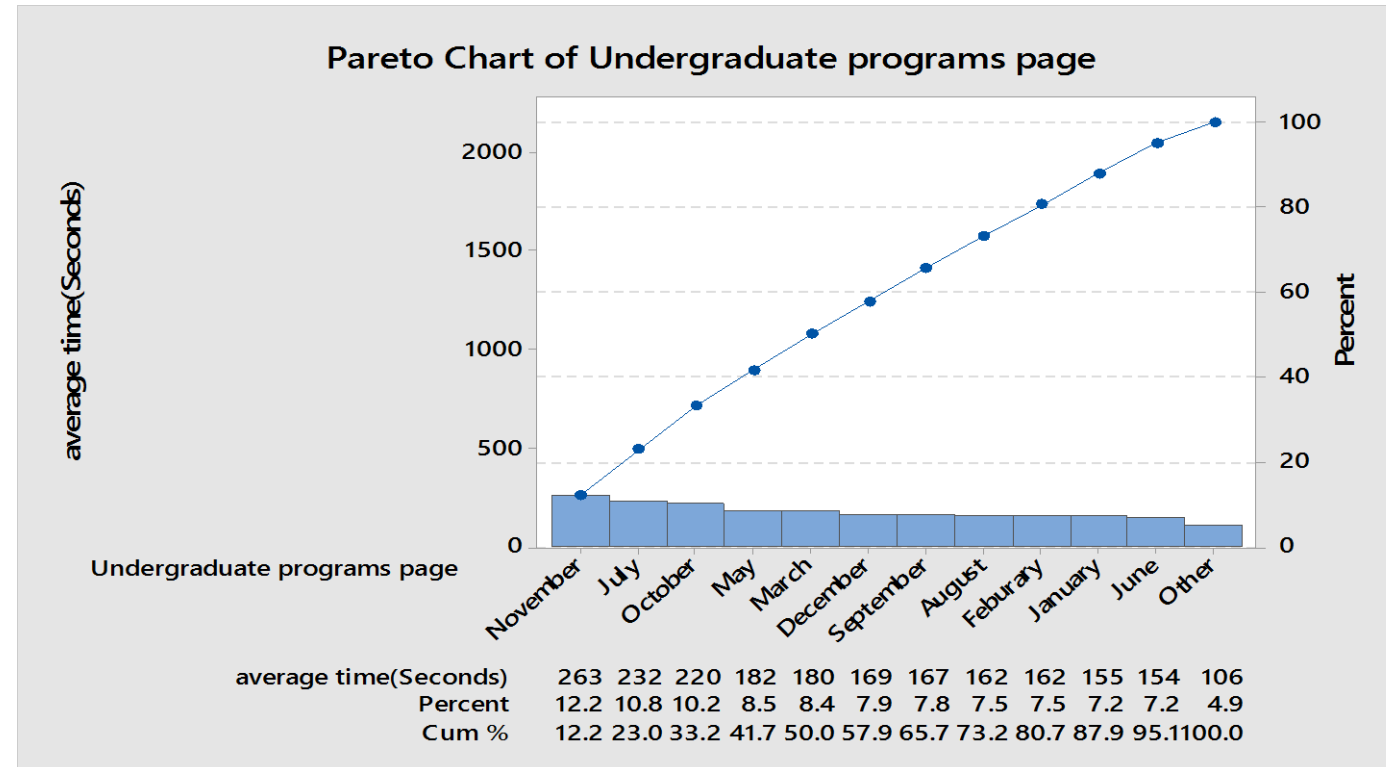
The above Pareto chart shows that July and January are the month people accessed the graduate programs page and spent more time on the page. May is the month people spent least amount of time on the graduate programs page. 243 seconds was spent by people in the month of July on the graduate programs.

Undergrad Programs Page Unique Pageviews



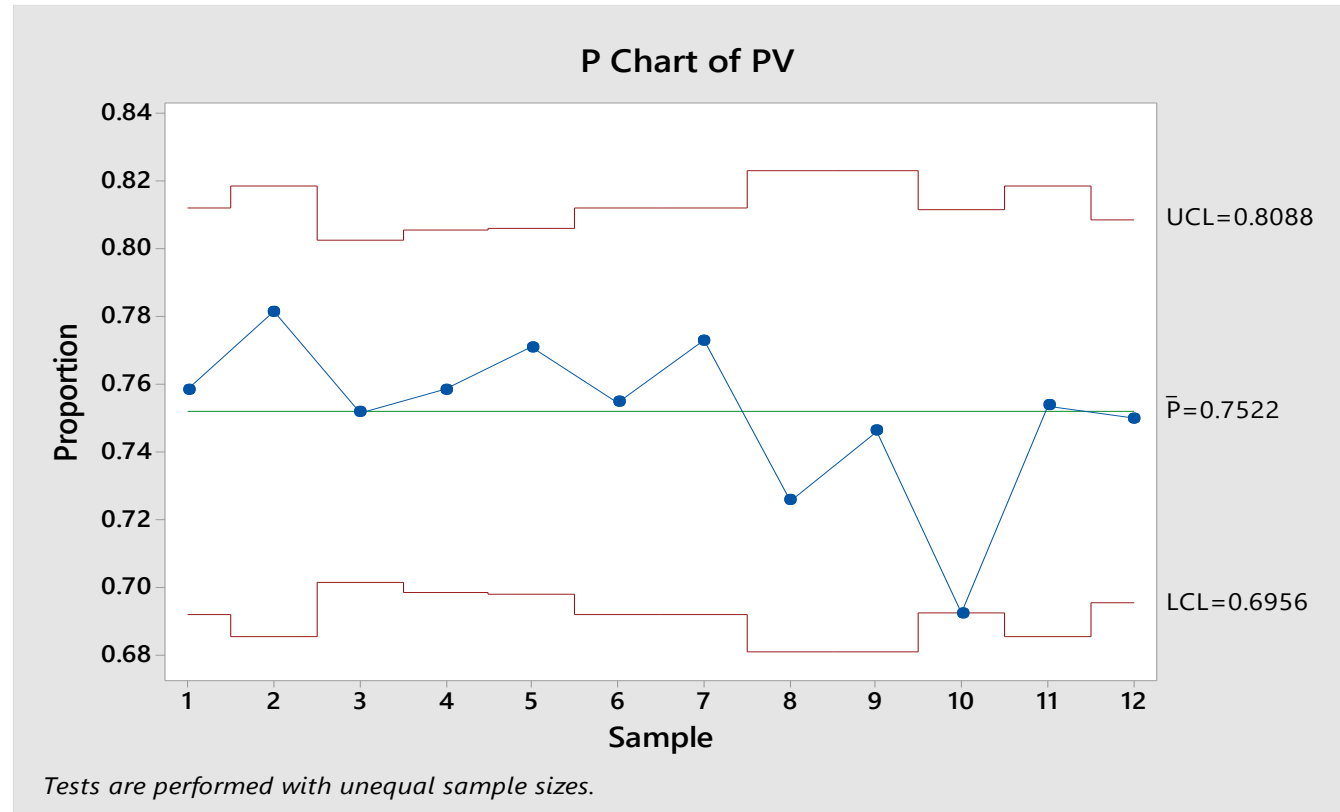
The above Pareto chart shows that first two months of unique pageviews for undergraduate programs page are the most vital of all, that is in the month of November, July, and October that was accessed by 263, 232, and 220 people respectively. April is the month that we would have improve in terms of having more number of unique page viewers.

Undergrad Programs Page Average Time Spent In Seconds



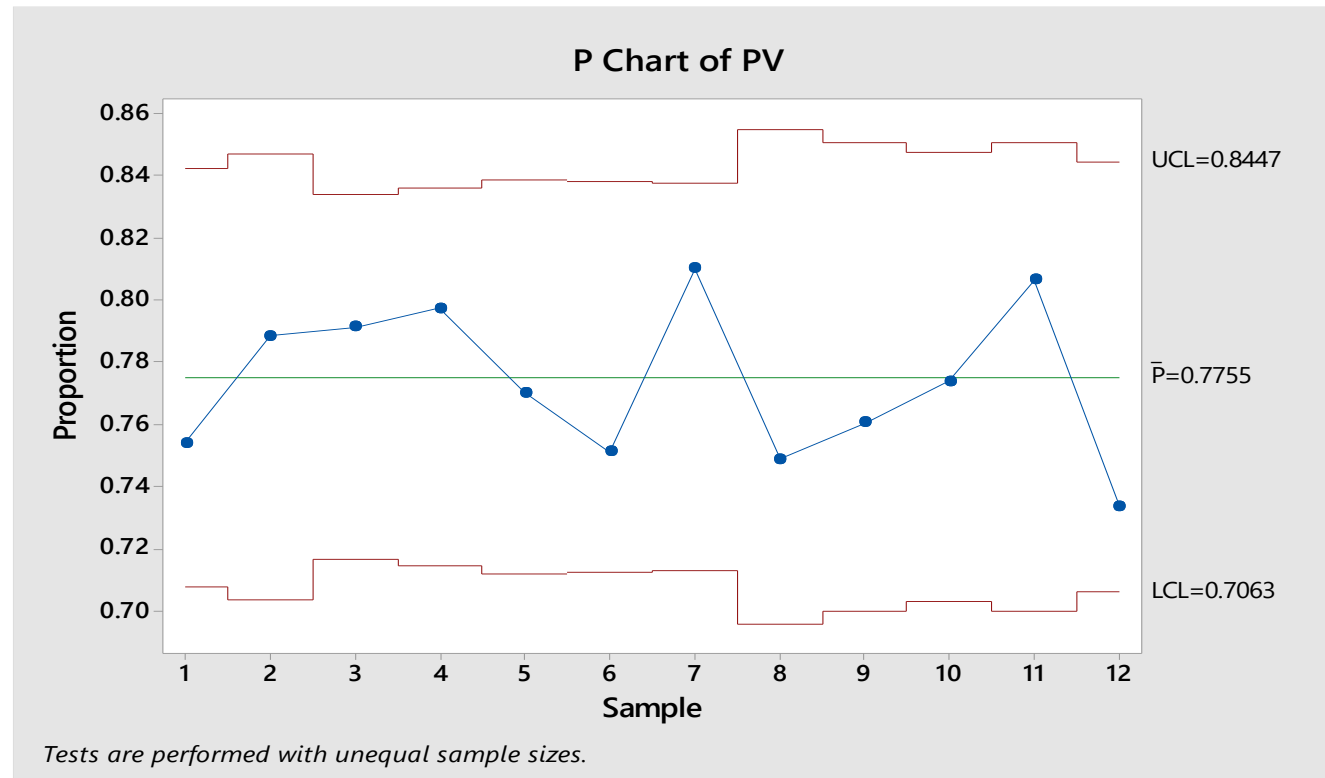
The above Pareto chart shows that November, July and October are the month people accessed the undergraduate programs page and spent more time on the page. May is the month people spent least amount of time on the undergraduate programs page. The highest time spent is 263 seconds in November.

P – Chart Index Page



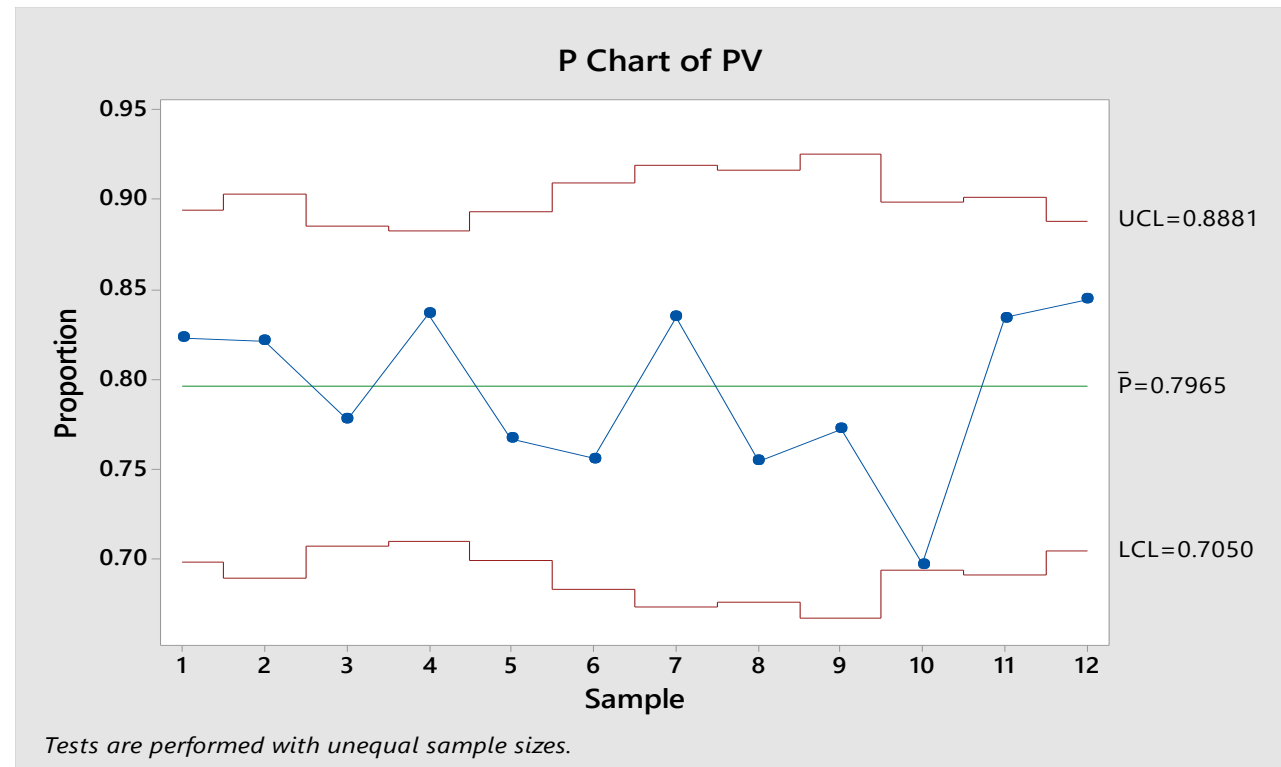
The above P chart for Index page shows that 10th month is the most vital cause that needs improvement. We want more of month 2 that is doing good. This research identified that 10th month needs more attention so that we could get the process in control.

P – Chart Graduate Programs Page



The above P chart for graduate programs page shows that 12th month is the most vital cause that needs improvement. We want more of month 7 and month 11 that are doing good. This research identified that 12th month needs more attention so that we could get the process in control.

P – Chart Undergrad Programs Page



The above P chart for undergraduate programs page shows that 10th month is the most vital cause that needs improvement. We want more of month 12 that is doing good. This research identified that 10th month needs more attention so that we could get the process in control.

Assumptions and Limitations

- This research need to do this quality check for all the departments. I think the sample size should be more. We need to have more access to the data of the samples without any restrictions.
- The data obtained needs to be more specific with respect to age to understand the sample behavior.
- This research assumes that everyone in the sample accessed the website for academic purpose.
- It is expected that the quality tools will be measuring what it should be measuring.

References

- Abdallah, S., & Jaleel, B. (2015). Website appeal: Development of an assessment tool and evaluation framework of E-marketing. *Journal of Theoretical and Applied Electronic Commerce Research*, 10(3), 45-62. doi: 10.4067/S0718-18762015000300005
- Goetsch, D., & Davis, S. (2013). *Quality management for organizational excellence: Introduction to total quality* (6th ed.). Upper Saddle River, NJ: Prentice Hall.
- Reinecke, K., Yeh, T., Miratrix, L., Mardiko, R., Zhao, Y., Liu, J., & Gajos, K. Z. (2013). Predicting users' first impressions of website aesthetics with a quantification of perceived visual complexity and colorfulness. *Proceedings of the SIGCHI Conference on Human Factors in Computing Systems* (pp. 2049-2058). ACM. doi: 10.1145/2470654.2481281
- Tague, N., (2005). ASQ quality press, The quality box, 2nd edition, 376-378. Retrieved from <http://rube.asq.org/chapters/H1224.pdf?SSOForce=Y>
- Wong, L.-M., Yan, H., Margel, D., & Fleshner, N. E. (2013). Urologists in cyberspace: A review of the quality of health information from American urologists' websites using three validated tools. *Canadian Urological Association Journal*, 7(3-4), 100+. Retrieved from [http://go.galegroup.com/ps/i.do?p=AONE&sw=w&u=psu _main&v=2.1&it=r&id=GALE%7CA327378813&sid=summon&asid=be4f634048fcdf120fb294e7893ac523](http://go.galegroup.com/ps/i.do?p=AONE&sw=w&u=psu_main&v=2.1&it=r&id=GALE%7CA327378813&sid=summon&asid=be4f634048fcdf120fb294e7893ac523)

Checking for Understanding

Any Questions?