

Pittsburg State University

Pittsburg State University Digital Commons

Football Programs, 1916-2013

University Archives

11-8-1941

Southwestern Builders vs Pittsburg Gorillas

Kansas State Teachers College of Pittsburg

Follow this and additional works at: <https://digitalcommons.pittstate.edu/footb>

Recommended Citation

Kansas State Teachers College of Pittsburg, "Southwestern Builders vs Pittsburg Gorillas" (1941). *Football Programs, 1916-2013*. 3.

<https://digitalcommons.pittstate.edu/footb/3>

This Book is brought to you for free and open access by the University Archives at Pittsburg State University Digital Commons. It has been accepted for inclusion in Football Programs, 1916-2013 by an authorized administrator of Pittsburg State University Digital Commons. For more information, please contact digitalcommons@pittstate.edu.

Official Program

Pittsburg vs. Southwestern

Saturday, November 8, 1941

2:00 p. m.

Price 10c



GOLD AND CRIMSON

On the plains of Southeast Kansas
 'Neath an ever cloudless sky,
Far away from surging ocean
 And the storm bird's plaintive cry,
With her prairies rolling westward
 Where the Redman once roamed free;
With her ensign proudly waving,
 Stands our dear K. S. T. C.

Let us greet the Gold and Crimson
 With a strong and cordial cheer;
Let our hearts be ever loyal
 To our Alma Mater dear!

Let our worthy sons and daughters
 For our College proudly stand,
Shielding zealously her honor
 In one brave unbroken band;
Let them hold aloft her banner
 With a stout and steady arm
Rallying her children 'round it
 From the city, town, and farm.

Buy United States Defense Savings Bonds!

With the Southwestern Coaches

Dick Nolan, Head Coach, attended college at Emporia State Teachers College where he was an all state guard in 1935 and served as freshmen coach for his Alma Mater in 1936.

When he was employed by the Arkansas City Junior College he faced a tough assignment as the college had not won a game in twenty seven consecutive starts. Nolan took over and in 1939 the Ark City eleven won top honors among the Kansas Junior Colleges and was unscored on in Kansas play.

Nolan came to Southwestern in 1940.

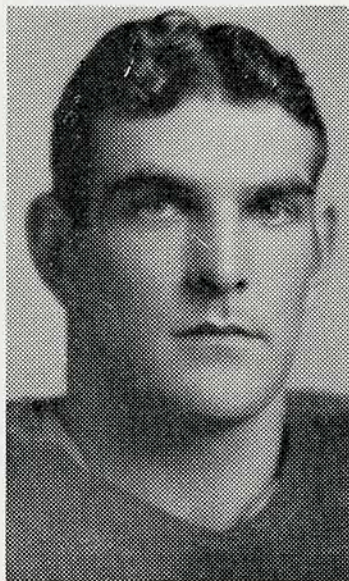
Clare Seay, a graduate and quarterback for North Texas Teachers is the line coach.

Harold Bratches is a former basketball star for Southwestern and is now student freshmen coach

Southwestern Builders, 1941



VANN, Back

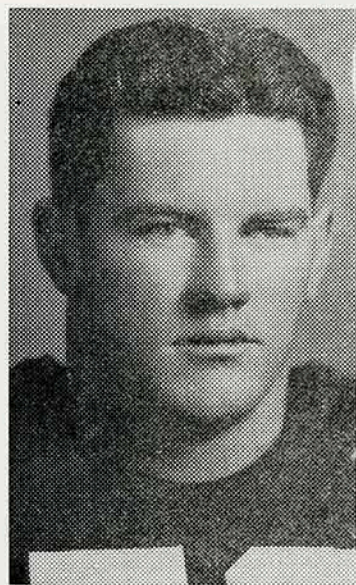


SHAFFER, End



SWAFFORD, Back

Southwestern Builders, 1941



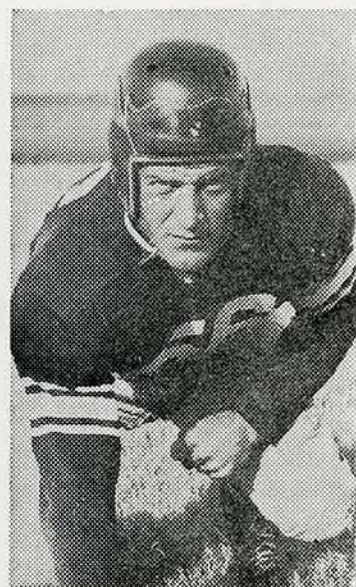
LAYDEN, End



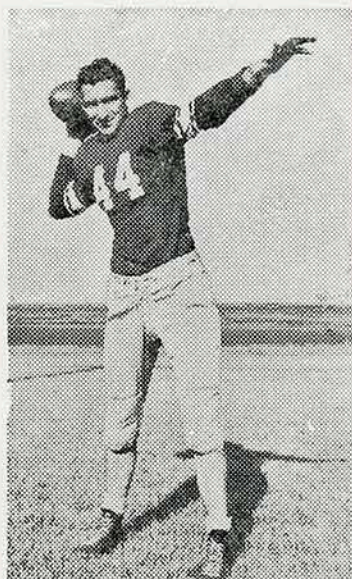
C. BARHAM, Back



AITSON, Back



ED BARHAM, Guard

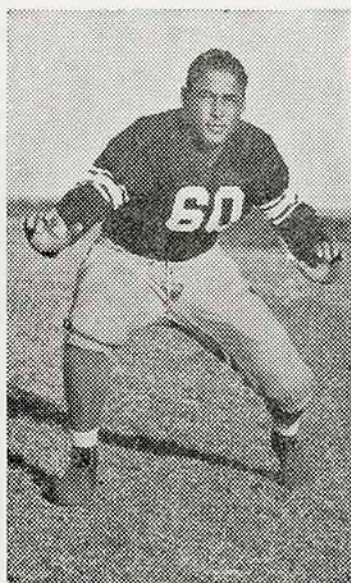


WHEELER, Back

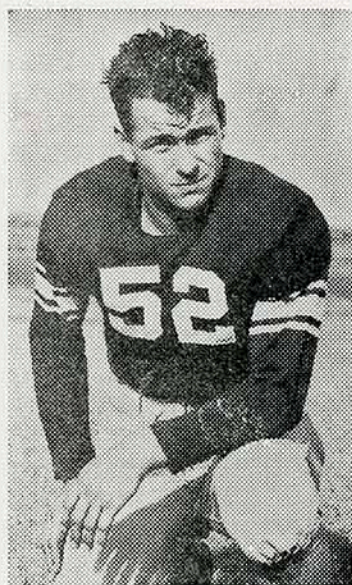
Southwestern Builders, 1941



DUNCAN, Center



BLAND, Tackle



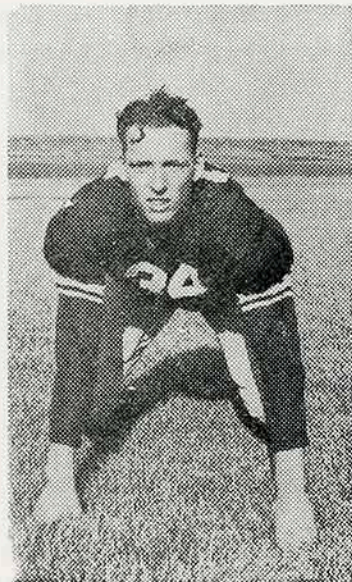
LANDRETH, Guard



SHAW, Tackle



WRAY, Quarter



ARMSTRONG, Guard

SOUTHWESTERN ROSTER

Dick Nolan, Head Coach

Clare Seay and Harold Bratches, Assistants

No.	Name	Position	Weight
20	Junior Glasscock	Back	140
21	Charles Ward	Back	150
28	Ross Barnes	Back	155
29	Vernon Aitson	Back	145
31	John Mathewson	Guard	170
32	Charles Landreth	Guard	175
33	Junior Duncan	Center	185
34	Wiley Armstrong	Guard	181
35	Emmet Reymen	Back	165
36	Joe Vann	Back	150
37	Bob Miles	Back	170
38	Jack Morris	End	170
39	*Bill Landreth	Guard	195
40	*Kermit Frank	Tackle	180
42	*George Seipp	Back	165
43	*Franny Roufle	End	175
44	Floyd Wheeler	Back	165
45	Jim Hesler	Back	175
46	*Truell Shaffer	End	185
47	*Bob Layden	End	190
48	*Conroy Barham	Back	195
49	Buck Wray	Back	202
50	Dick Pestinger	End	170
51	*Bryce Roderick	Guard	195
52	Junior Zahn	End	170
53	Jim McMahon	Tackle	195
54	*Jack Rose	Center	200
55	*Ed Barham	Guard	195
57	Harold Rogers	Center	207
58	*Bob Robinson	Tackle	220
59	Hiawath Bland	Tackle	210
60	*Victor Bland	Tackle	220
61	Ralph Shaw	Tackle	215
77	*John Swafford	Back	165

*Letter men

Probably
Lin

SOUTHWESTERN

46	Shaffer
58	Robinson
39	Landreth
54	Rose
55	E. Barham
60	Vic Bland
47	Layden
49	Wray
29	Aitson
77	Swafford
48	C. Barham

Referee
Umpire
Head Linesman

NEXT HO

Augustana, S. D. v

Saturday, Nover

le Starting

neups

PITTSBURG

LE	Jones	78
LT	Steele	98
LG	Beard	80
C	Gire	99
RG	D. Spigarelli	86
RT	Holmes	97
RE	Ridenour	70
QB	J. Morgan	77
LH	Martin	94
RH	Begando	66
FB	Melcher	73

ICIALS

	Pierce Astle
	Joe Ramp
	Floyd McNair

K. S. T. C. ROSTER

G. W. Weede, Athletic Director
Charlie Morgan, Head Coach; Prentice Gudgen, Assistant Coach

No.	Name	Wt.	Pos.	Home
99	Gire, Kenneth	205	C	Pittsburg
98	Steele, Alfred	210	T	Pittsburg
97	Holmes, Vernon	200	T	Blue Mound
95	Pelton, Clyde	205	T	Raymond
94 (96)	Martin, Johnny	195	B	Arma
93	Bottger, Merle	198	E	Manhattan
92	Childs, Ralph	190	B	Kansas City, Ks.
91	Sears, Bob	190	G	Baxter Springs
90 (88)	Brim, A. M.	195	E	Pittsburg
89	Salb, Richard	194	C	Hartford
88 (90)	Morgan, Bill	185	B	Pittsburg
87	Spigarelli, Adolph	194	G	Frontenac
86	Spigarelli, Dino	199	G	Frontenac
85	Hazell, Alvin	195	T	Hutchinson
84	McCoy, Walden	195	T	Riverton
83	Emery, Frank	195	C	Nevada, Mo.
82	Hartman, Bill	200	G	Pittsburg
81	Bertuzzi, Andy	175	E	Arma
80 (77)	Beard, Carl	170	G	Pittsburg
79	Hottenstein, John	180	G	Humboldt
78	Jones, Melvin	170	E	Gridley
77 (80)	Morgan, Jack	160	B	Pittsburg
76	Lance, John	170	B	Pittsburg
75	Turner, Chancy	175	B	Yates Center
74 (73)	Conner, Jack	175	B	Burden
73 (74)	Melcher, George	170	B	Clay Center
72 (70)	German, Don	170	B	Pittsburg
71	Smith, Walter	175	B	Mineral
70 (72)	Ridenour, Eugene	180	E	Pittsburg
68	Duffey, Duglas	160	E	Independence
67	Schuetz, Le Roy	160	B	Clay Center
66 (64)	Begando, Joe	150	B	Pittsburg
65	Tolle, Glenn	150	B	Yates Center
64 (66)	Lollar, Tom	152	B	Chetopa
58	Senzee, Art	210	T	Mulberry
57	Marshbanks, Jim	195	T	Pittsburg
56	Edwards, James	170	G	Girard
55	Zimmerman, Harry	180	T	Macksville
54	Stevens, Elmer	172	G	Villa Grove, Ill.
53	Mengarilli, Augustine	185	G	Girard
	Gilliland, Charles	160	B	Pittsburg

Numbers in parentheses are for yellow jerseys in cases where numbers have changed.

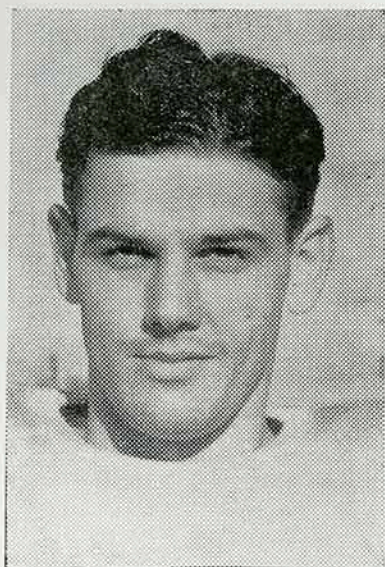
OME GAME

s. Pittsburg Gorillas

nber 15, 2:00 p. m.

e Pep Club of K. S. T. C. Hats off to a live wire bunch.

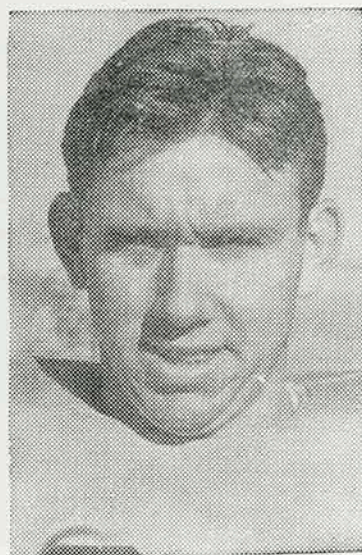
Presenting the 1941 Gorilla Gridsters



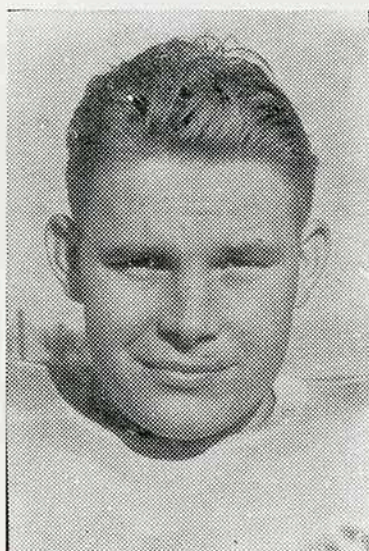
JACK MORGAN
Quarterback



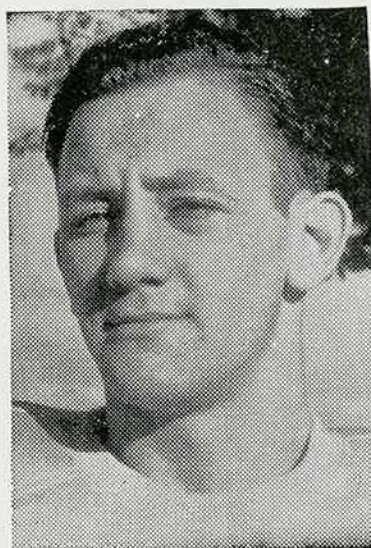
JOE BEGANDO
Back



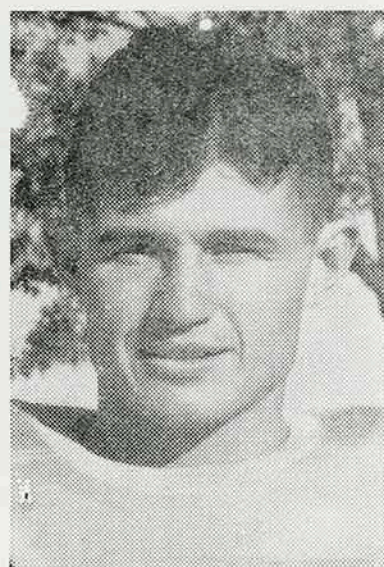
JOHNNY MARTIN
Back



VERNON HOLMES
Tackle

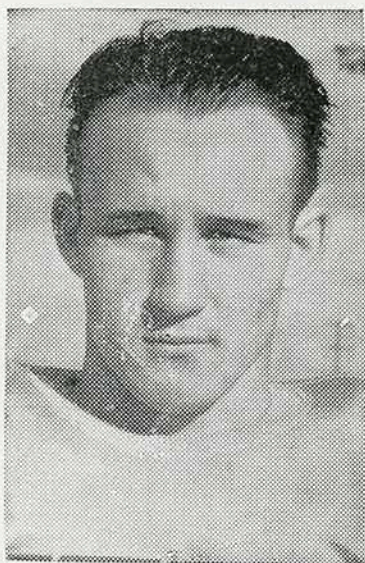


GEORGE MELCHER
Back

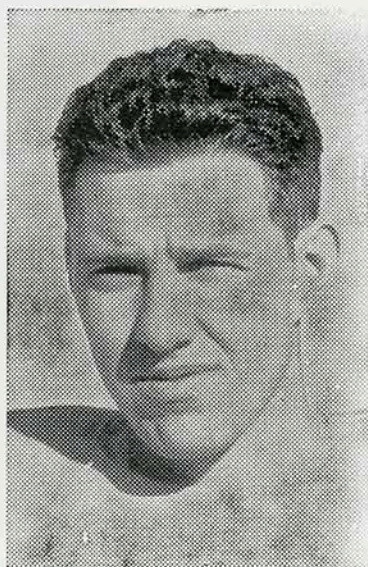


MELVIN JONES
End

Yea Gorillas! Fight! Fight! Fight!



EUGENE RIDENOUR
End



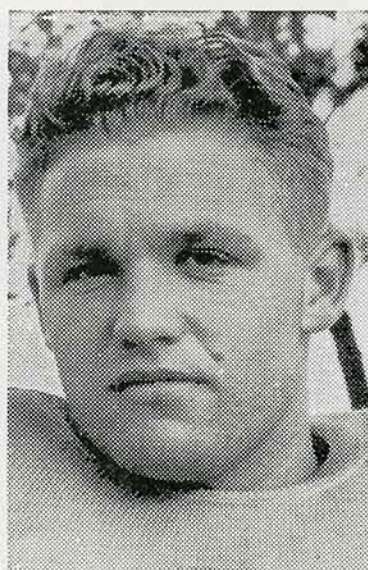
ALFRED STEELE
Tackle



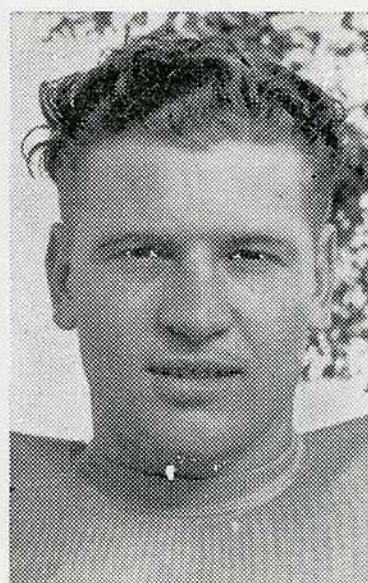
ADOLPH SPIGARELLI
Guard



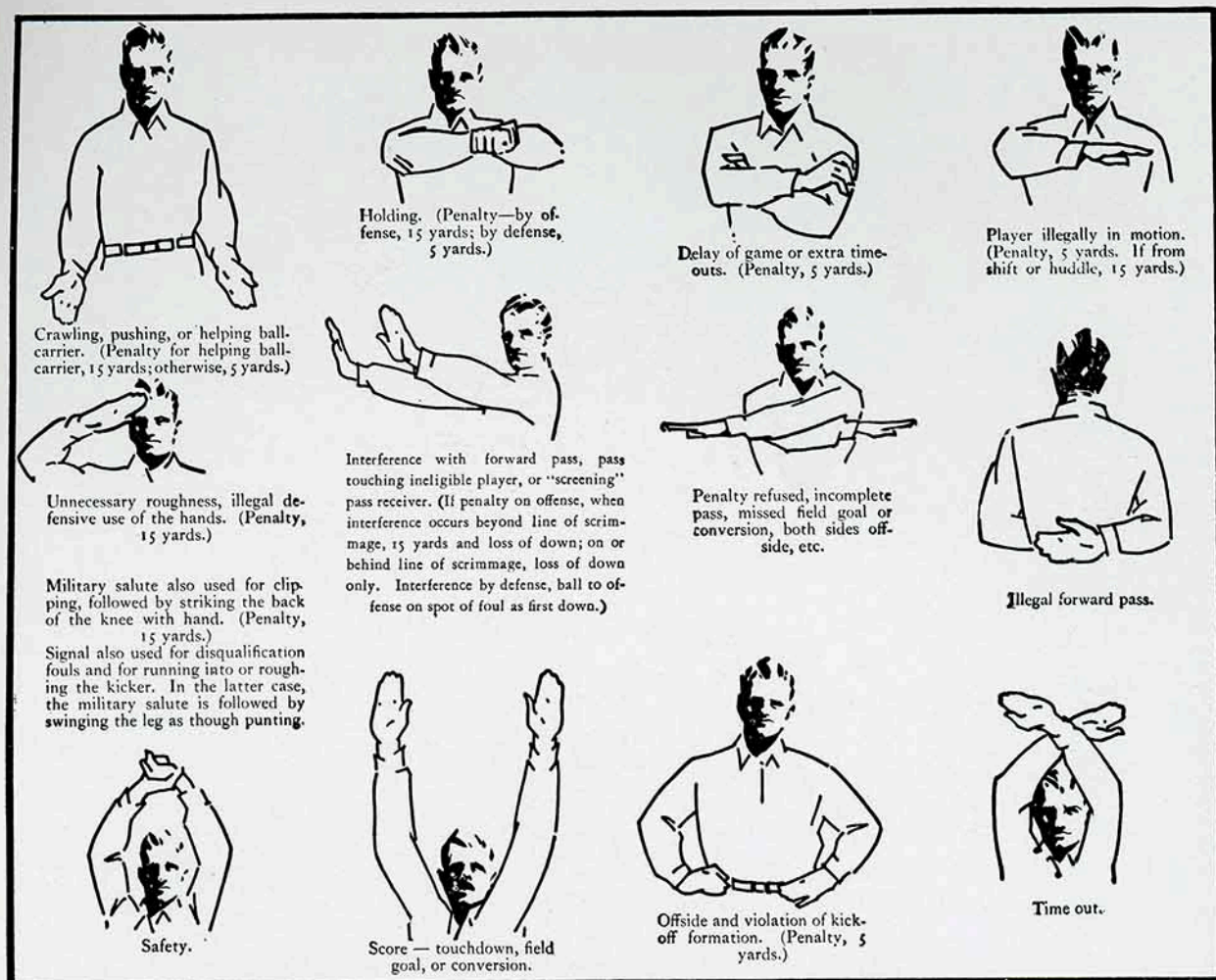
CARL BEARD
Guard



RICHARD SALB
Center



KENNETH GIRE
Center



INTERPRETATION OF OFFICIALS' SIGNALS

PRINCIPAL PENALTIES

Loss of a Down

Forward pass touched by ineligible player.
Forward pass from less than 5 yards back or second forward pass during same play.
Incomplete forward pass.
Intentionally grounding pass (also 15 yards).
Interference by passing team with player eligible for catch.

Loss of 5 Yards

Request for time out more than three times during a half.
Illegal delay of game by either team.
Failure of substitute to report.
Violation of kick-off formation.
Center, guard or tackle may not drop back.
Player in motion, less than 5 yards back.
Player out of bounds when scrimmage begins.
Attempts to draw opponents offside.
Interference with opponents before ball is put in play.
Player taking more than two steps after fair catch.
Illegal use of hands and arms by players of defensive team.
Running into the kicker.
Crawling into the runner.

Loss of 15 Yards

Forward pass touched by ineligible player.
Substitute communicating before ball is put in play.
Failure to come to stop in shift play.
Intentionally grounding pass to save loss of yardage.
Interference by passing team with player eligible for catch.
Interference with opportunity to make fair catch.
Pass touching or being touched by ineligible player.
Throwing to ground the player who has made fair catch.
Illegal use of hands and arms by players of offensive team.
Roughing the kicker.
Flagrant roughing of kicker (also disqualification).
Piling up.

Loss of Half Distance to Goal

Tripping, tackling runner out of bounds, etc. Clipping.
Unsportsmanlike conduct.
Striking, kneeling, kicking, etc. (also disqualification).
Foul within 1-yard line.
Foul by defensive team behind its goal line.

Loss of Ball

Second kick out of bounds at kick-off.
Failure to advance ball 10 yards in four downs.
Interference by team which did not make pass.
Free ball kicked or kicked at.

The following Pittsburg business firms have cooperated with the Kansas State Teachers College in advertising this game.

American Service Company

Arma Elevator Company

Bee Hive Cafe

Bumgarner's

Firestone Home & Auto Supply Store

Caskey Motor Company

Coca Cola Bottling Company

College Inn

Dunham Laundry

Don Gray Drug Store

Earl Spicer Motor Service

Ellsworth Undertaking Co.

Fadler Produce Company

Ferguson Studio

Gordon Transit Company

Harry's Cafe

The Headlight And The Sun

Hull & Dillon Packing Co.

Jim's Bar-B-Que

The Finest of Foods

Kenny Gibson

Lindburg Drug Store

Long-Bell Lumber Co.

Marvel Shoe Store

Moore Bros.

Pepsi-Cola

Dr. W. T. Plumb

Puritan Dairy

E. K. Smith Funeral Home

O. L. Stamm, Insurance

Ernie Williamson Music
House

Patronize These Advertisers