

Pittsburg State University

Pittsburg State University Digital Commons

Football Programs, 1916-2013

University Archives

9-18-1941

Tahlequah Teachers vs Pitt Gorillas

Kansas State Teachers College of Pittsburg

Follow this and additional works at: <https://digitalcommons.pittstate.edu/footb>

Recommended Citation

Kansas State Teachers College of Pittsburg, "Tahlequah Teachers vs Pitt Gorillas" (1941). *Football Programs, 1916-2013*. 4.

<https://digitalcommons.pittstate.edu/footb/4>

This Book is brought to you for free and open access by the University Archives at Pittsburg State University Digital Commons. It has been accepted for inclusion in Football Programs, 1916-2013 by an authorized administrator of Pittsburg State University Digital Commons. For more information, please contact digitalcommons@pittstate.edu.

O F F I C I A L P R O G R A M

TAHLEQUAH TEACHERS

VS.

PITT GORILLAS

P R I C E
5 C E N T S

THURSDAY
SEPT. 18, 1941
7:30 p. m.





G. W. WEEDE
Director of Athletics



CHARLEY MORGAN, Head Coach

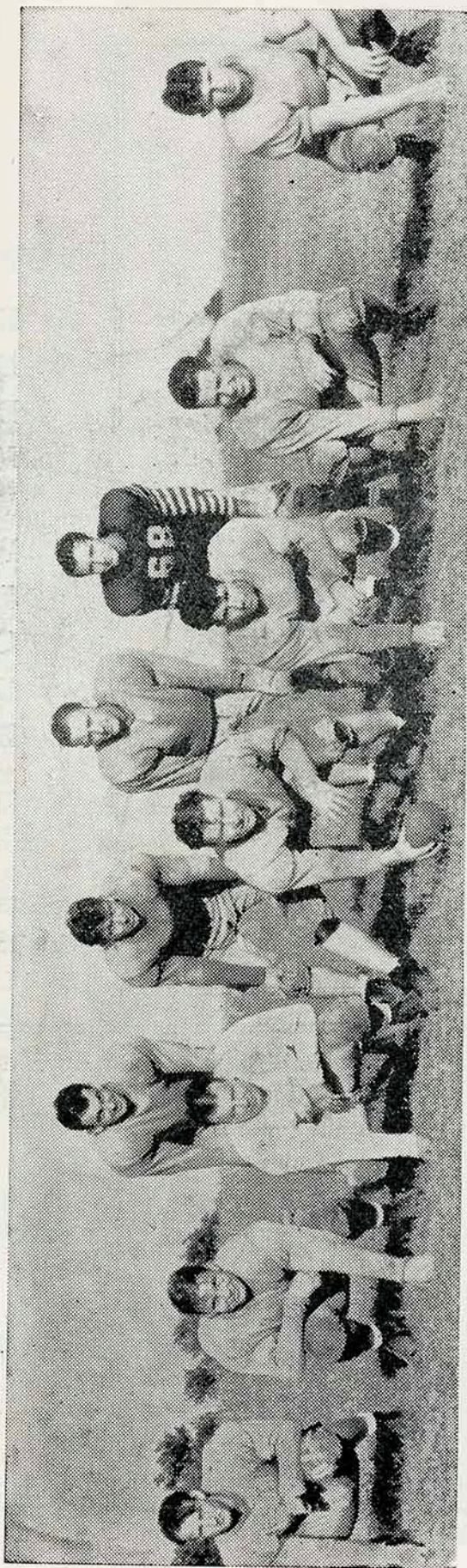
PRENTICE GUDGEN, Assistant Coach

President Rees H. Hughes



A dyed-in-the-wool football fan. Rain or Shine—hot or cold—win, lose, or draw you sports enthusiasts will find him backing the Crimson and Gold till the last white line is crossed.

PROBABLE STARTING GORILLA LINEUP



The boys who probably will start the game against the Tahlequah Redmen all except one are lettermen. On the line, from left to right, are Eugene Ridenour, 180-pound end; Vernon Holmes, tackle, 200 pounds; Dina Spigarelli, guard, 195 pounds; Kenneth Gire, center, 205 pounds; Carl Beard, guard, 170 pounds; Slick Steele, tackle, 210 pounds and Melvin Jones, end 170 pounds. In the backfield are Bill Morgan, who may be replaced at starting quarter by his brother Jack; Johnny Martin, halfback; George Melcher, fullback and Joe Berando, halfback. All are lettermen except Martin.

Little is known here of the quality of the Redmen team D. M. (Doc)

Wadley is bringing here from Tahlequah. Advance notices from Wadley, however, report there are only four lettermen on the team. There will be 24 on the squad. Wadley and Assistant Coach Bob Jagard bring to Pittsburg. The probable Redmen starters show a line average of 179 pounds, a full ten pounds lighter than the Gorilla team. The lineup includes: Douglass, left end, 170; Borders, left tackle, 187; Dunham, left guard, 196; B. Mitchell, center, 170; Williams, right guard, 180; Pitts, right tackle, 180; J. Mitchell, right end, 173; Clayton, quarterback, 170; Bergin, left half, 175; Burton, right half, 167; Hand, fullback 180. Williams, Clayton, B. Mitchell and Berger are the lettermen.

TAHLEQUAH ROSTER

COACHES

D. M. "Doc" Wadley	Head Coach
Bob Jaggard	Ass't Coach

Name	Wt.	Position
Armstrong, Delbert	169	Halfback
Borders, R. C.	187	Tackle
Crow, Clifton	165	End
Dunham, Charlie	196	Guard
Douglas, John	170	End
Green, Gilbert	171	Center
Elliott, Jim	175	Guard
Hand, Rudolph	180	Fullback
Moore, Watie	175	Halfback
Pitts, Wallace	180	Tackle
Pence, Leon	159	Quarterback
Meason, Bob	155	Quarterback
Williams, Burl	175	Guard
Price, Arland	180	Tackle
Clayton, Carlos	170	Quarterback
McGee, Clay	195	Tackle
Mitchell, John	173	End
Mitchell, Bill	170	Center
Burton, Mike	167	Halfback
Gourd, George	155	Halfback
Goodwin, Ernest	156	Guard
Harris, Gene	178	Center
Berber, Kenneth	175	Halfback
Utley, James	170	Guard

Probable
Line

TAHLEQUAH

Douglass
 Borders
 Dunham
 Mitchell
 Williams
 Pitts
 J. Mitchell
 Clayton
 Berger
 Burton
 Hand

OFF

Referee
 Umpire
 Head Linesman

NEXT HOME

Washburn vs. I

Saturday, October

H O M E C O M M

This program is being sold by members of the F

ole Starting ineups

PITTSBURG

LE.....	Jones	78
LT.....	Steele	98
LG.....	Beard	80
C.....	Gire	99
RG.....	D. Spigarelli	86
RT.....	Holmes	97
RE.....	Ridenour	70
QB.....	J. Morgan	77
LH.....	Martin	94
RH.....	Begando	66
FB.....	Melcher	73

FFICIALS

.....	C. C. Custer, K. U.
.....	Bill Collins, K. U.
.....	Paul McCoy, Pittsburg Teachers

K. S. T. C. ROSTER

No.	Name	Wt.	Pos.	Home
99	Gire, Kenneth	205	C	Pittsburg
98	Steele, Alfred	210	T	Pittsburg
97	Holmes, Vernon	200	T	Blue Mound
95	Pelton, Clyde	205	T	Raymond
94	Martin, Johnny	195	B	Arma
93	Bottger, Merle	198	E	Manhattan
92	Childs, Ralph	190	B	Kansas City, Ks.
91	Sears, Bob	190	G	Baxter Springs
90	Brim, A. M.	195	E	Pittsburg
89	Salb, Richard	194	C	Hartford
88	Morgan, Bill	185	B	Pittsburg
87	Spigarelli, Adolph	194	G	Frontenac
86	Spigarelli, Dino	199	G	Frontenac
85	Hazell, Alvin	195	T	Hutchinson
84	McCoy, Walden	195	T	Riverton
83	Emery, Frank	195	C	Nevada, Mo.
82	Hartman, Bill	200	G	Pittsburg
81	Bertuzzi, Andy	175	E	Arma
80	Beard, Carl	170	G	Pittsburg
79	Hottenstein, John	180	G	Humboldt
78	Jones, Melvin	170	E	Gridley
77	Morgan, Jack	160	B	Pittsburg
76	Lance, John	170	B	Pittsburg
75	Turner, Chancy	175	B	Yates Center
74	Conner, Dale	175	B	Burden
73	Melcher, George	170	B	Clay Center
72	German, Don	170	B	Pittsburg
71	Smith, Walter	175	B	Mineral
70	Ridenour, Eugene	180	E	Pittsburg
68	Duffey, Douglas	160	E	Independence
67	Schuetz, Le Roy	160	B	Clay Center
66	Begando, Joe	150	B	Pittsburg
65	Tolle, Glenn	150	B	Yates Center
64	Lollar, Tom	152	B	Chetopa
58	Senzee, Art	210	T	Mulberry
57	Marshbanks, Jim	195	T	Pittsburg
56	Edwards, James	170	G	Girard
55	Zimmerman, Harry	180	T	Macksville
54	Stevens, Elmer	172	G	Villa Grove, Ill.
53	Mengarilli, Augustine	185	G	Girard
	Gilliland, Charles	160	B	Pittsburg

OME GAME

Pittsburg Gorillas

ber 11, 8:30 p. m.

I N G G A M E

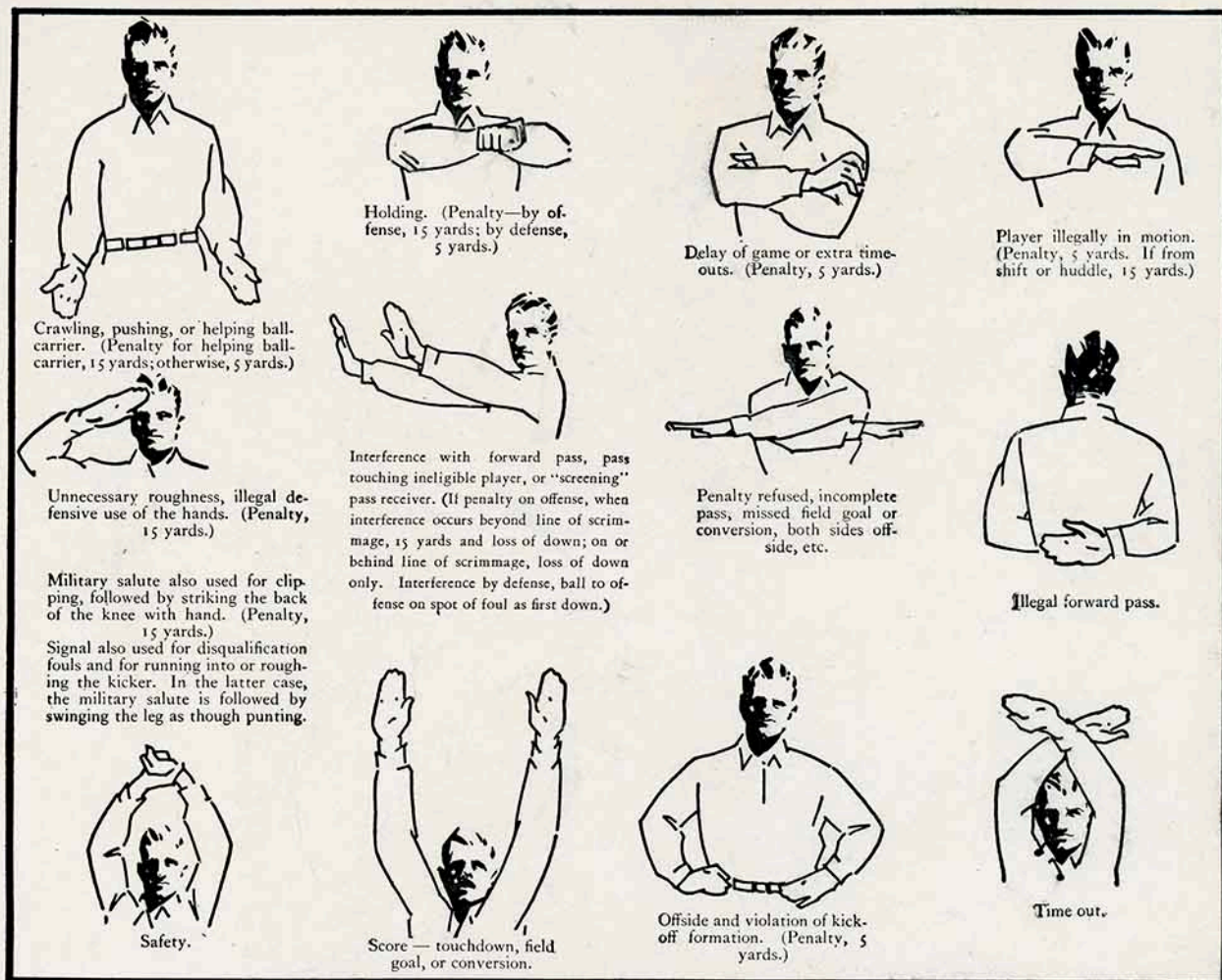
e Pep Club of K. S. T. C. Hats off to a live wire bunch.

THE ATHLETIC COUNCIL



Top: W. L. Friley, J. Ralph Wells, S. L. Householder, H. V. Hartman, G. W. Weede, F. C. German, Bottom: C. R. Wasser, Ernest Mahan, Paul Murphy.

The Athletic Council is charged with working out the details for conducting the entire athletic program of the College and assisting the coaches in arranging the schedules. The Council sets up requirements for earning letters in major sports and awards letters to the athletes who have earned them.



INTERPRETATION OF OFFICIALS' SIGNALS

PRINCIPAL PENALTIES

Loss of a Down

Forward pass touched by ineligible player.
Forward pass from less than 5 yards back or second forward pass during same play.
Incomplete forward pass.
Intentionally grounding pass (also 15 yards).
Interference by passing team with player eligible for catch.

Loss of 5 Yards

Request for time out more than three times during a half.
Illegal delay of game by either team.
Failure of substitute to report.
Violation of kick-off formation.
Center, guard or tackle may not drop back.
Player in motion, less than 5 yards back.
Player out of bounds when scrimmage begins.
Attempts to draw opponents offside.
Interference with opponents before ball is put in play.
Player taking more than two steps after fair catch.
Illegal use of hands and arms by players of defensive team.
Running into the kicker.
Crawling into the runner.

Loss of 15 Yards

Forward pass touched by ineligible player.
Substitute communicating before ball is put in play.
Failure to come to stop in shift play.
Intentionally grounding pass to save loss of yardage.
Interference by passing team with player eligible for catch.
Interference with opportunity to make fair catch.
Pass touching or being touched by ineligible player.
Throwing to ground the player who has made fair catch.
Illegal use of hands and arms by players of offensive team.
Roughing the kicker.
Flagrant roughing of kicker (also disqualification).
Piling up.

Loss of Half Distance to Goal

Tripping, tackling runner out of bounds, etc. Clipping.
Unsportsmanlike conduct.
Striking, kneeling, kicking, etc. (also disqualification).
Foul within 1-yard line.
Foul by defensive team behind its goal line.

Loss of Ball

Second kick out of bounds at kick-off.
Failure to advance ball 10 yards in four downs.
Interference by team which did not make pass.
Free ball kicked or kicked at.

The following Pittsburg business firms have cooperated with the Kansas State Teachers College in advertising this game.

American Service Company

Arma Elevator Company

Bee Hive Cafe

Bumgarner's

Firestone Home & Auto Supply Store

Caskey Motor Company

Coca Cola Bottling Company

College Inn

Dunham Laundry

Don Gray Drug Store

Earl Spicer Motor Service

Ellsworth Undertaking Co.

Fadler Produce Company

Ferguson Studio

Gordon Transit Company

Harry's Cafe

The Headlight And The Sun

Hull & Dillon Packing Co.

Jim's Bar-B-Que

The Finest of Foods

Kenny Gibson

Lindburg Drug Store

Long-Bell Lumber Co.

Marvel Shoe Store

Moore Bros.

Pepsi-Cola

Dr. W. T. Plumb

Puritan Dairy

E. K. Smith Funeral Home

O. L. Stamm, Insurance

Ernie Williamson Music
House

Patronize These Advertisers