

Pittsburg State University

Pittsburg State University Digital Commons

Student Handbooks, 1926-1966

University Archives

1930

Hand Book 1930-1931

Kansas State Teachers College

Follow this and additional works at: <https://digitalcommons.pittstate.edu/handbooks>

Recommended Citation

Kansas State Teachers College, "Hand Book 1930-1931" (1930). *Student Handbooks, 1926-1966*. 6.
<https://digitalcommons.pittstate.edu/handbooks/6>

This Book is brought to you for free and open access by the University Archives at Pittsburg State University Digital Commons. It has been accepted for inclusion in Student Handbooks, 1926-1966 by an authorized administrator of Pittsburg State University Digital Commons. For more information, please contact digitalcommons@pittstate.edu.

ARCHIVES

R.D.

E 216.8

St 94/930-31

RARE BOOK

K

1930-1931

PORTER LIBRARY

K
T153
S933
HA
1930-31
C.1

EAT AT THE
Bob-A-Del Inn
"BEST FOR LESS"

Fine food served in an obliging,
appetizing manner. Foods that are
choice and well cooked in the proper
way.

Try Bob-A-Del Today

H. R. Sells

Phone 1425

**Kodaks and Finishing
Toilet Articles
School Supplies**

Your business is appreciated

The Collegiate

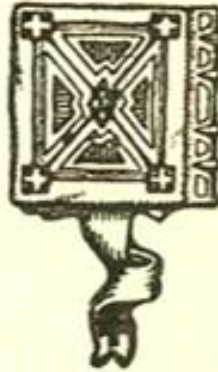
L. P. Wilcox, Prop.

Phone 407

KANSAS STATE TEACHERS COLLEGE
of Pittsburg

HAND BOOK

Volume VIII



1930-'31

Dedicated to the
Class of 1934

George Small, Editor
Jim Nation, Business Manager

Published by the College Y. M. C. A.
Printed at K. S. T. C.

Shoe Repairing

Factory work done in a
new equipped shop.

We call for and deliver.

College Shoe Shop

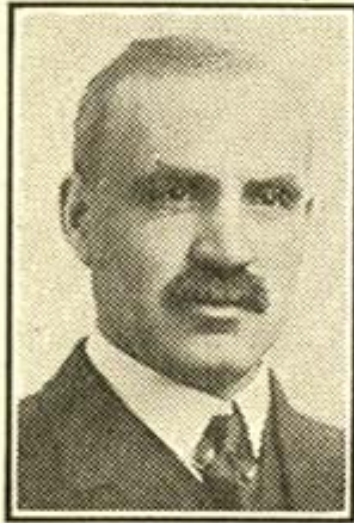
A. C. Marks, Prop.
1603 1-2 S. Bdwy.
Phone 147

You will be surprised how it
pays to look well—

Varsity Barber Shop

Paul—Harvey—Mark
1614 S. Bdwy.

PRESIDENT'S GREETING



To the students of
Kansas State Teachers
College:

We desire to express
our sincere apprecia-
tion to the Christian
Organizations of K. S.
T. C. for their splendid
and efficient work of
the past.

We repeat what we
have said in the past:
In a complete program
of education the de-
velopment of body,
mind, and soul are indispensable. Our Chris-
tian Organizations are doing much to con-
serve and promote this part of our educa-
tion at K. S. T. C.

In behalf of the faculty of the College,
accept our congratulations and our hopes
for greater success in the future than your
Organizations have had in the past.

Cordially,

President W. A. Brandenburg.

THIS HANDBOOK BELONGS TO:

Name

Pittsburg address

Phone number

Home address

Classification

In case of accident,
notify

.....

Address

.....

GREETINGS

I am happy to have the opportunity of extending greetings to you through this means. As Dean of the College, I want you to know that you have come to a bigger and better K. S. T. C. That you have made a wise choice in selecting this institution for your college work. We want you to feel at home here and happy in your work. Our entire faculty join with me in this greeting. If you get into trouble or have problems that are worrying you, let us help you.

Sincerely yours,

G. W. TROUT,
Dean of the College.

GREETINGS FROM DEAN MITCHELL

So many thoughts come to me as I pen the words that will greet you at home, in the shop, the store, or on your vacation.

To say the word that will make college life more of service to you, to voice the sentiment that makes a college student gracious, courteous in addition to strength of character born of labor and sacrifice, is a privilege any woman may covet.

This is my privilege, I hope you will read this greeting the second time and then say, "Well, Dean Mitchell, I'm glad to meet you."

Cordially,

MRS HATTIE MOORE-MITCHELL,
Dean of Women.

HERBERT GRAY'S ADVICE TO FRESHMEN

1. Defend your conscience against the fashions around you. Refuse to do things simply because others do them. Develop your resistance power and you develop character.

2. Keep your temper in hand. Without tempers few people would amount to much, but none make a success of living until they have subdued them.

3. Teach your body to obey your decisions. Appetites and passions are a part of our natural endowment, but they become a curse once out of hand.

4. Learn to accommodate yourself to other people. Real life is a life in society. Knowing how to get along with folks is something to be learned in early years.

5. Use your spiritual powers unceasingly. Spiritual difference that has lasted until middle life dulls the soul. "Remember now thy Creator in the days of thy youth."

ORGANIZATIONS

Fraternities

Sororities

Y. M. C. A.

Y. W. C. A.

Newman Club

Departmental Clubs

Churches

Campus Clubs

Social Fraternities

Kappa Delta Kappa, Alpha Omega Chapter, (Local)
Founded February 3, 1927. President, Mark A. Mills
—Sponsor, Dr. O. W. Chapman. House, 1718 S. Bdwy.

Phi Sigma Epsilon, Beta Chapter. (National)
Founded at K. S. T. C. Emporia 1927. President, Har-
old Brown—Sponsor, Dean L. M. Collins. House, 1801
S. Bdwy.

Sigma Tau Gamma, Epsilon Chapter. (National)
Founded at Warrensburg, Mo. May 1920. President,
Elmer Johnson—Sponsors, O. E. Michie, O. F. Grubbs
and R. M. Coffelt. House 1708 S. Bdwy.

Sigma Ma Delta, Alpha chapter, (National) Found-
ed at Pittsburg, December 16, 1927. President, John
Nation—Sponsor, F. H. Dickinson. House, 201 E.
Williams.

Social Sororities

Alpha Sigma Alpha, Eta Eta Chapter. (National)
Founded at Virginia State Normal in 1901. President,
Avys Rae Taylor—Sponsor, Jane M. Carroll. House,
1812 S. Bdwy.

Delta Sigma Epsilon, Beta Chapter. (National)
Founded at Miami University 1914. President Waneta
Sedoris—Sponsor, Thelma Carnagey. House, 110 W.
Lindburg.

Lambda Phi Delta, Beta Chapter. (National)
Founded at Evanston, Illinois 1916. President, Helen
French—Sponsor, Beatrice Olsen. House, 1810 S. Elm.

Pi Delta Theta, Gamma Chapter. (National) Found-
ed at Miami University 1926. President, Norma Tom-
asi—Sponsor, Mrs. G. E. Braley. House, 213 E.
Williams.

Pi Kappa Sigma, Alpha Beta Chapter. (National)
Founded at Ypsilanti, Michigan, Nov. 17, 1894. Presi-
dent, Ada Fletcher—Sponsor, Mrs. Hallie Bennington.
House, 210 E. Williams.

Sigma Sigma Sigma, Chi Chapter. (National)
Founded at Farmville, Virginia, April 1898. President,
Evelyn Butler—Sponsor, Miss Bertha Spencer. House,
1714 S. Bdwy.

Theta Sigma Upsilon, Epsilon Chapter. (National)
Founded at Emporia 1907. President, Reba Kirby—
Sponsor, Elmina Graham, House 1810 S. Bdwy.

—8—

Professional and Honorary Fraternities

Alpha Gamma Tau, Alpha Chapter. (Professional
Scientific Fraternity)—J. A. Yates, G. E. Abernathy,
and W. H. Matthews, sponsors.

Kappa Delta Pi (National Scholastic Fraternity)—
W. A. Brandenburg, sponsor.

—8—

Lambda Sigma Kappa (Local Premedic Fraternity.)
—O. P. Dellinger, J. R. Wells, and C. Leist, sponsors.

Pi Gamma Mu (National Social Science Fraternity)
—Faculty members of the history department, sponsors.

Pi Kappa Delta, Theta Chapter (National Forensic Fraternity)—J. R. Pelsma, sponsor.

Sigma Tau Delta, Sigma Alpha Chapter (National Professional English Fraternity)—Adele Burnett and Elmina Graham, sponsors.

Sigma Phi Mu (Local Psychology Fraternity)—
C. B. Pyle, sponsor.

Phi Sigma Pi, Delta Chapter (National Honorary Scholastic Industrial Arts Fraternity)—A. H. Whitesitt, sponsor.

Phi Upsilon Omicron, Alpha Chapter (National Professional Home Economics Fraternity)

Pi Omega Pi, Omicron Chapter (National Commercial Teachers Fraternity)—W. S. Lyster, sponsor.

Sigma Alpha Iota, Alpha Chapter (National Women's Music Fraternity)

Phi Mu Alpha, Beta Delta Chapter, (Sinfonia Fraternity of America.)

Departmental and Other Organizations

Arden Players—J. R. Pelsma, sponsor.

Biology Club—J. R. Wells, sponsor.

Band—Oscar Allen, sponsor.

Charles Elliot Education Club—Dr. Pryor, sponsor.

College Art Club—Elsie Bowman, sponsor.

Commerce Club—W. S. Lyster, sponsor.

English Club—

Gorillas—John Nation, president.

Home Economics Club—Ruth Warner, president.

Industrial Arts Society

Kampus Kats

Mathematics Club—J. A. G. Shirk, sponsor.

Messiah Chorus—Walter McCray, sponsor.

Men's Glee Club—Otto Booker, sponsor.

Orchestra—Walter McCray, sponsor.

Panhellenic Council—Prudence Scovell, president.

Polymania Club—Gabriella Campbell, sponsor.

Red Cross Life Saving Corps—Miss Nevins, sponsor.

Primary Training League—Jane Carroll, president.

Shakespeare Club—M. Haughwout, sponsor.

Spanish Club—Miss Guernsey, sponsor.

Women's Athletic Association—Miss Cave, sponsor.

Y. M. C. A. Officers

President—Robertson Strawn.
 Vice-President—John Price.
 Secretary—Herbert James.
 Treasurer—Earl Rassmussen.
 General Secretary—George D. Small.
 Faculty Advisors—
 Harrison L. Euhler.
 Professor Straley.
 Professor Stonecipher.
 Robert Hart.
 John Lance.

Y. W. C. A. Cabinet 1930-1931

President	Julia Belle Breazeale
Vice President	Ruth Cox
Secretary	Avys Rae Taylor
Treasurer	Nina Thomas
Book Exchange Chairman	Edrie Layne
Program	Ruth Williams
Girl Reserve	Virginia Holloran
Publicity	Glada Strode
	Dorothy Strawn
Finance	Gladys Cutsinger
Social	Nadine Stonecipher
	Lynette Beazley
Big Sister	Marjorie Ham
World Fellowship	Clarice Butterly
	Edna Denny
Music	Donna Burr
Regional News Letter	Marjorie Pierce

THE Y. M. C. A. PROGRAM

1. To create and strengthen faith of students in God, through Jesus Christ.
2. To aid men in adapting themselves to college life.
3. To cultivate and develop talent among college men.
4. To stimulate thinking, among students, on world problems.

Membership in the "Y" is entirely free and every man on the campus is invited to join. The activities of the Y. M. C. A. of K. S. T. C. are:

1. Religious Education. The Y. M. C. A. believes that no man can afford to neglect to develop himself spiritually and endeavors to promote serious thinking on the big questions of religion through forums, Bible study groups, and the regular Tuesday morning meetings.

2. Social Service. Throughout the year groups will be organized to promote various kinds of community programs, such as directing Boy Scout troops, teaching Sunday School classes, coaching basketball and baseball, leading song service, and working with gospel teams.

3. Campus Service. Under this head can be included the Y. M. C. A. employment bureau, the freshman program, sick visitation, vocational conferences with business men, social events such as the "Y" Stag and the Y. M.—Y. W. Mixers, and the preparation of this handbook. Mr. Small, the general secretary, is always ready to advise with any man who feels the need of a conference with someone who knows and can help solve a college man's problems.

Y. W. C. A.

As an association, we are a group of girls who are eager to grow, through fellowship and study together, into a richer and broader life. We desire so to unite in purpose the students of our campus that we may be a part of the great group of college women everywhere who are working toward world fellowship and international peace. We hope you will choose to join us in our search for the realization of high ideals of living, as we strive to measure our lives by the national objective: "We unite in a determination to live unreservedly Jesus' law of love and so to know God."

We invite you to enter into all our activities, and to attend our teas, hikes, and other social meetings as well as our study and devotional hours. Every Tuesday morning at 10:10 we hold our weekly fellowship hour. There will be Bible study groups and interracial groups organized to meet your convenience. All those who are here for the first time are urged to join the Freshman Commission, an organization of freshmen girls, who meet separately, but are also a part of the larger Y. W. C. A.

The Y. W. C. A. rest room is on the third floor of Russ Hall, room 314. Come in and use it; it is here for you. In the office adjoining the rest room you will find the Y. W. C. A. secretary, who is anxious to know you personally. Come in and meet her.

CHURCHES

Baptist

First Baptist, 215 West Seventh Street. Rev. C. J. Askins.

First Baptist Mission, 412 North Fairview.

Mt. Heron, 310 East Tenth Street. Rev. J. E. Elias.

Now Hope Baptist, 215 West Eleventh Street. Rev. L. G. Cooper.

North End Baptist Mission, 2011 North Grand

West Side Baptist, 405½ North Warren Street. Avenue.

Catholic

St. Mary's Catholic Church, 201 East Ninth Street
Father McCullough.

Christian

First Christian, 120 West Fifth Street. Rev. F. L. Pettit.

Christian Science

First Church of Christ Science, 302 West Euclid Avenue.

Episcopal

St. Peter's Episcopal, 304 West Euclid Avenue.

Lutheran

St. John's Lutheran, 304 West Third St., Rev. P. Schmidt.

Zion Lutheran, 912 East Washington. Rev. Otto Matuschka.

Methodist

First M. E., 412 North Pine Street. Rev. Wm. McCormack.

Methodist Mission, 1605 North Grand Avenue.

Bethel A. M. E. 407 W. 8th, Rev. W. B. Johnson.

Presbyterian

First Presbyterian, 123 West Sixth. Rev. Arthur B. Miller.

United Presbyterian, 401 North Walnut Street. Rev. J. H. Hutchman.

United Brethren

United Brethren, 405 South Locust Street. Rev. A. C. Slever.

Salvation Army

Citadel, 213 East Fourth Street. Capt. G. L. Clapp.
Assembly of God, 607 North Joplin Avenue. Rev.
R. R. Morrison.

Assembly of God, 701 East Seventh Street.

Church of God in Christ, 112 East 11th Street.
Major Cremo.

Holiness Church, 216 West Eleventh Street.

Reorganized Church of Latter Day Saints, 116½
West Third. W. H. Eliason, Pastor.

Church of the Nazarene, 902 East Fourth Street.
Rev. Victor L. A. Abbey.

Apostolic Church, 2201 North Tucker Street.

Church of Christ, 1605 North Grand.

Spiritualist

Church of Spiritual Science, 113½ West Fifth Street.

Spiritualist Church (First), 114½ West Third Street.
Rev. V. J. Rowe.

SCHOOL ASSEMBLIES

College Assembly is held in the auditorium every Thursday at 10:10. There is always special music, brief devotional exercises, and some program of interest. This is the one time of the week when the student who cares to keep in touch with what is going on on the campus cannot afford to miss it. Special pep meetings or assemblies to hear noted speakers are called from time to time as occasion demands.

NEWMAN CLUB

The Newman Club of K. S. T. C. is an organization of Catholic men and women, affiliated with the national organization, which has representative chapters in all of the leading state universities and colleges throughout the land. Our aim is to broaden the social and scholastic life of college students and to promote a feeling of fellowship among all.

Meetings are held each Tuesday morning at 10:10 in Room 112, Science Hall. A cordial welcome is extended to all.

LESTER GREVE,
President.

PUBLICATIONS

Publication Board. The college annual and newspaper are published under the supervision of a board of publications which hires the major staff members and decides upon the business policies of the two publications. This board, which was created four years ago by the Student Council, is composed of four students and three faculty members. More detailed information may be had by consulting Student Council By-Law XIX, which is printed elsewhere in this book.

The Kanza. The annual is one of the most important activities of any college because it is a permanent and authentic record of the events of the school year. Every student should contribute to the support of the book by buying a copy and by having his picture taken as quickly as possible.

The Collegio The Collegio is the official school paper. Copy for the paper is prepared by the journalism classes, and the printing is done in the school shop. Your activity fee pays your subscription, and your copy will be waiting for you in front of the Industrial Arts building every Friday noon.

DO'S

Attend the Y. W. C. A. "Jolly Up" and the Y. M. C. A. "Stagg." They are held the first week of school. The "Mixer" will be about two weeks off. They are open to all students.

Forget that you came from any high school. Discard high school letters and ways. You belong to K. S. T. C. of Pittsburg now.

Attend all athletic contests. Activity ticket admits.

Join the Gorillas or Kampus Kats.

Help to promote the democratic spirit for which K. S. T. C. is noted.

Cultivate the habit of remembering names and applying them to the right people.

Get acquainted with your instructors. They are your best friends.

Buy a Kanza.

Don't skip chapel.

Read the bulletin boards.

Join the Y. M. C. A. or Y. W. C. A. Membership is free

Attend the meetings of Y. M., Y. W., or Newman Club Tuesday, 10:10 a. m.

Football Schedule--1930

Sept. 27 Tahlequah, Okla., at Muskogee.
Oct. 3 Wichita U. at Pittsburg.
Oct. 10 Washburn at Topeka.
Oct. 17 Hays at Pittsburg.
Oct. 24 Southwestern at Winfield.
Oct. 31 College of Emporia at Pittsburg.
Nov. 7 Springfield at Pittsburg.
Nov. 15 Emporia Teachers at Emporia.
Nov. 21 St. Benedicts at Atchinson.
Thanksgiving Open.
Note: All home games will be played at night.

Basketball Schedule--1930

Dec. 18 Arkansas U. at Fayetteville.
Dec. 19 Arkansas U. at Fayetteville.
Jan. 12 K. S. T. C. at Hays.
Jan. 13 Washburn at Topeka.
Jan. 24 Wichita at Pittsburg.
Jan. 28 K. S. T. C. and Emporia at Pittsburg.
Jan. 31 Southwestern at Pittsburg.
Feb. 6 C. of E. at Pittsburg.
Feb. 9 C. of E. at Emporia.
Feb. 10 K. S. T. C. of Emporia at Emporia.
Feb. 13 Hays at Pittsburg.
Feb. 23 Southwestern at Winfield.
Feb. 24 Wichita at Wichita.
Feb. 27 Washburn at Pittsburg.

THE COACHES

"Doc" Weede is starting his eleventh year as director of athletics at K. S. T. C. "Doc" has retired from active duty as foot ball coach and now is giving all of his time as director of the department and to coaching the track team. In the later capacity he has made his most enviable record, and is fast gaining the reputation of one of the most foremost track coaches in the United States.

John Lance

It is becoming a habit for "John" to turn out winning basket ball teams. He has either won or tied for five championships since coming to K. S. T. C. in 1923. His team last year was undoubtedly one of the greatest to ever grace a Kansas basket ball court. This record of twenty straight victories over all comers is a good mark for future K. S. T. C. basketeers to shoot at.

Edward "Blue" Howell, the youngest member of the coaching staff starts his second year as foot ball coach and much is expected of him. He has ten lettermen and ten reserve men to build a team around this year. "Blue" came to K. S. T. C. from Nebraska University where he gained All-American honors in 1929.

George Walker the fourth member of the coaching staff is a product of Perdue and Illinois University. George starts his fifth season at K. S. T. C. and will have charge of boxing and wrestling, swimming, the Intra-Mural program and assist with basket ball and football.

Track and Field Records

- 100-Yard Dash—Keithly 1929, 9.8 seconds.
220-Yard Dash—Shapcott, 1925 Keithly, 1929, 21.8 sec.
440-Yard Dash—McEnterfer, 1928, 49.8 sec.
880-Yard Dash—Winchester, 1930, 1 min. 56.6 sec.
Mile Run—Nicholson, 1927, 4 min. 27 sec.
Two-Mile Run—Nicholson, 1925, Axtell ('26), 9 min. 58 seconds.
120-Yard High Hurdles—Alyea, 1921, 15.6 sec.
220-Yard Low Hurdles—Titus, 1928, 24.5 sec.
Mile Relay—Keithley, McEnterfer, Snodgrass, Titus, 1928, 3 min. 20.8 sec.
Pole Vault—Butterfield, 1926, 12 ft. 5½ in.
High Jump—Madison, 1929, 6 ft. 3 5-8 in.
Broad Jump—Titus, 1928, 23 ft. 1½ in.
12-Pound Shot—White, 1926, 51 ft. 10 in.
16-Pound Shot—White, 1928, 48 ft. 9 in.
Discus—Roberts, 1930, 136 ft. 6 in.
Javelin—Travis, 1926, 198 ft. 8 in.
Two-Mile Relay—Waner, Cullison, Sandusky, Winchester, 7 min. 59.9 sec.
440-Relay—Madison, Keithley, Kirby, Snodgrass, 42.6 seconds.
880-Relay—Madison, Keithley, Kirby, Snodgrass, 1 min. 28 sec.

FOOTBALL LETTERMEN

Ed. Gaw	C.....	St. Joseph, Mo.
Dale Kessinger.....	H. B.	Atlanta, Kan.
Henry Brock	H.B.....	La Harpe, Kan.
Leland Lewis	C.....	Pawhuska, Okla.
Summer Roberts	E.....	Wellington, Kan.
Ernest Lance	T.....	Pittsburg, Kan.
Wayne Gardner	Q.....	Louisburg, Kan.
Fred Smith	F.B.....	Howard, Kan.
William Wilson	G.....	Lewis, Kan.
Adam Kabler	H.B.....	Omaha, Neb.
Football Reserves		
George Wilson	G.....	Jetmore, Kan.
Tony Bettoga.....	Q.....	Pitcher, Okla.
Curtis Brickey		
Vernon Brickey		
Dick Mack	H.B.....	Pittsburg, Kan.
Jerome Freedman	Q.B.....	Joplin, Mo.
Rollin Schildnecht	G.....	Pittsburg, Kan.
Lee Grossman	E.....	Omaha, Neb.
Marvin McQuerry	H.B.....	Cherokee, Okla.
Manny Robertson	H.B.....	Omaha, Neb.
Track Lettermen		

1. Summer Roberts, Wellington, Kan.
2. Clifford Madison, Hutchinson, Kan.
3. Anton Sandusky, St. Joseph, Mo.
4. Jake Spring, St. Joseph, Mo.
6. Joy Cullison, Urbana, Ill.
5. Adam Kahler, Omaha, Neb.
7. Wellington Towner, Urbana, Ill.
8. George Gardner, Arma, Kan.
9. Robert Schroder, Chase, Kan.
10. Elsworth Briggs, Pittsburg, Kan.
11. Lynn Kirby, Larned, Kan.
12. Palmer Snodgrass, Pittsburg, Kan.
13. Clarence Ratzlaff, Buhler, Kan.

BASKETBALL LETTERMEN

1. Francis Wachter G..... | Frontenac |- 2. Sumner Roberts G..... | Wellington |- 3. Elmer Johnson F..... | Hutchinson |- 4. Wm. Kincaid G..... | Jasper |- 5. Clarence Ratzlaff F..... | Buhler |- 6. Leland Lewis G..... | Pawhuska |- 7. Ernest Schmidt C..... | Winfield |

INTRA MURAL RECORDS AND INFORMATION FOR 1930

Team Winners

Sport	Spring	Summer
Basket Ball—	Collegiates	
Speed Ball (fall)—	Phi Sigs	
Volley Ball—	Phi Sigs	
Play ground Ball—	Phi Sigs	1000 Aces

Individual Winners

Sport	Spring	Summer
Golf—	Harry Hood	Dave Lhuillier
Tennis, singles—	Elmer Johnson	Herschel Briggs
Tennis, doubles—	E. Johnson and Paul Fowler	U. Middleton and T. Harvey
Horseshoe, singles—	Ward Ozbun	R. Robson
Horseshoe, doubles—	C. Garvin and W. Garvin	R. Robson and W. Ozbun

Individual Point Winners

Sport	Spring	Summer
Swimming	Raymond Scott	
Track and Field	Tom Scott 15 points	Tom Scott 12 points

PATRONIZE THESE DONORS OF TROPHIES PERMANENT PRIZES

Sport	Donor 1st Place	Donor 2nd Place
Golf	Collegiate	College Shoe Shop
Tennis, Singles	Bob-A-Dell	Varsity Barber Shop
Doubles	Oasis Garden	College Beauty & Barber Shoppe
Horse Shoe Singles	Campus Grocery	Students Cafe
Doubles	Campus Cleaners	
Basketball	Lindburg-Gray	Lanyon's Jewelry
Track and Field,	High Point Man	— Al's Grocery
Swimming, High Point Man	—	College Inn

Challenge Trophies

Basketball—	Dr. C. H. Smith
Play Ground—	Dr. C. H. Smith
Speed Ball—	Dr. C. H. Smith
Volley Ball—	Bellairs-Wright Oil Co.

Relay Team

	Spring	Summer	
	1. J. Nation	1. R. Robson	-----
Track & Field	2. E. Gaw	2. C. Johnson	9:10 Gym
	3. D. Layne	3. L. Copeland	Class
	4. T. Scott	4. J. Price	

High Point Man in Physical Efficiency Tests for School

Norman May of 2:20 P.E. Class—9.41½ points

	Points	Personal Record
50 Yd. Dash	100	5.9 Sec.
100 Yd. Dash	97½	11.1 Sec.
120 Yd. Low Hurdles	100	15.9 Sec.
Shot Put	98	38' 9"
St. Broad Jump	78	9' 3"
R. Broad Jump	98	19' 9½"
Base Ball Throw	95	105 Yds.
High Jump	95	5' 3"
Hop Step & Jump	83	37' 0
Pull Up	100	15 times

Former Champion, Lester Ingle, Summer 1928, 932 Pts.

Q. M. Records

Track and Field

Event	Holder	Record	Year
50 yd. dash	Joe Skubitz and S. Schmucker	5.6 Sec.	Summer 1926—27
100 yd. dash	T. Scott	10.5 Sec.	Spring 1929
Shot Put	D. Layne	46 ft. 6 in.	Spring 1930
Base Ball Throw	Geo. Caugher	122 yds. 2 ft. 6 in.	Summer 1930
St. Broad Jump	L. Redd	10 ft. 6½ in.	Summer 1929
Hop, Step and Jump	H. Bagley	42 ft. 7½ in.	Summer 1930
10 Flights			
120 yd. Low Hurdles	S. Schmucker and L. Redd	15.4 Sec.	Summer 1926—27
5 Flights			
120 yd. Low Hurdles	Oran Schearer	15.3 Sec.	Summer 1930
High Jump	Chet Johnson	5 ft. 8⅝ in.	Spring 1930
R. Broad Jump	Harold Dunkerton	20 ft. 7½ in.	Spring 1928
440 yd. Relay	Cliff Breithampt P. Shaner J. Nation T. Scott	..	
		48 Sec.	Spring 1920

Swimming

Event	Holder	Record	Year
40 yd. Free Style	E. Nicholson	20.8 Sec.	Summer 1929
100 yd. Free Style	E. Nicholson	1:08 Sec.	Summer 1929
440 yd. Free Style	G. Franks	7:24.3 Sec.	Spring 1928
40 yd. Back Stroke	J. Hosley	28.3 Sec.	Summer 1929
100 yd. Back Stroke	G. Franks	1:34.9 Sec.	Summer 1929
40 yd. Breast Stroke	P. Shearer	29.0 Sec.	Summer 1929
100 yd. Breast Stroke	P. Shearer	1:35.5 Sec.	Summer 1929
160 yd. Relay	2. Dan Scott 3. Ray Scott 1. W. White 4. T. Graham	1:31.6	Spring 1930

CALENDAR. 1930-'31.

FIRST SEMESTER.

Sept. 9, Tuesday—1930First semester enrollment.
Sept. 10, WednesdayClasses begin.
Nov. 10, MondayMid-semester.
Nov. 26, WednesdayDismissal for Thanksgiving recess.
Dec. 1, MondayClasses resumed.
Dec. 19, FridayDismissal for Christmas recess.
Jan. 5, Monday—1931Classes resumed.
Jan. 23, FridayFirst semester ends.

SECOND SEMESTER.

Jan. 26, MondaySecond semester enrollment.
Jan. 27, TuesdayClasses begin.
Feb. 26, ThursdayCommemoration day.
March 30, MondayMid-semester.
April 2, ThursdayDismissal for Easter recess.
April 7, TuesdayClasses resumed.
April 20-26Annual music festival.
April 25, SaturdayScholarship contests.
May 24, SundayBaccalaureate services.
May 28, ThursdayCommencement.

FIRST SUMMER SESSION

June 1, MondayFirst summer session enrollment.
June 2, TuesdayClasses begin.
July 31, FridayFirst summer session ends.

SECOND SUMMER SESSION

August 1, SaturdaySecond summer session enrollment.
August 3, MondayClasses begin.
August 28, FridaySecond summer session ends.

FIRST SEMESTER, 1931-'32.

Sept. 8, TuesdayFirst semester enrollment.

SCHOOL SONG

THE GOLD AND CRIMSON

On the plains of southern Kansas,
 'Neath an ever cloudless sky,
Far away from surging ocean
 And the storm bird's plaintive cry;
With her prairies rolling westward,
 Where the red men once roamed free;
With her ensign proudly waving,
 Stands our dear K. S. T. C.

Chorus

Let us greet the Gold and Crimson
 With a strong and cordial cheer;
Let our hearts be ever loyal
 To our Alma Mater dear!

Let her worthy sons and daughters
 For our College proudly stand,
Shielding zealously her honor
 In one brave unbroken band;
Let them hold aloft her banner
 With a stout and steady arm,
Rallying her children round it
 From the city, town, and farm.

STREET DIRECTORY

West of Bdwy.

Pine	1
Walnut	2
Olive	3
College	4
Miles	5
Catalpa	6
Woodland	7
4th St. Circle	8
Chestnut	9
Georgia	10
Warren	11
Smith	12

East of Bdwy.

Locust	1
Elm	2
Joplin	3
Grand	4
Smelter	5
Michigan	6
Stilwell	7
Maple	8
Taylor	9
Lapham	10
Tucker	11
Putnam	12
Rouse	13
Fairview	14
Highland	15
Water	16

South of 1st St.

Rose	1
Euclid	2
Kansas	3
Forest	4
Park	5
Washington	6
Adams	7
Jefferson	8
Webster	9
Monroe	10
Madison	11
Jackson	12
Quincy	13
Morris	14
Carlton	15
Williams	16
Cleveland	17
Harrison	18
Potlitzer	19
Lindburg	20
Ford	21
Springfield	22
Sommers	23
Longfellow	24

North of 1st St.

First to 27th. consecutively.

The campus proper is bounded on the west by Broadway, on the east by Joplin, on the north by Cleveland, and on the south by Lindburg.

MANUAL YELL

M—A—N—U—A—L
M—M—MAN U—U—UAL
M—A—N—U—A—L MANUAL
YEA TEAM, YEA TEAM, YEA TEAM
FIGHT FIGHT FIGHT

YEA (Opponent), YEA (Opp.), YEA (Opp.)
HOWDY, HOWDY, HOWDY

YEA TEAM, YEA TEAM, YEA TEAM
WE'RE FOR YOU, WE'RE FOR YOU
WE'RE FOR YOU

YEA (Opponent), YEA (Opp.), YEA (Opp.)
FIGHT'EM, FIGHT'EM, FIGHT'EM

FIFTEEN RAHS

RAH, RAH, rah rah rah,
RAH, RAH, rah rah rah,
RAH, RAH, rah rah rah,
TEAM, TEAM, TEAM
WHO, TEAM? WHO, TEAM?
WHO? TEAM, TEAM, TEAM.

Will we beat (opponent's name)? Well yes!
Cheer leader—What's the matter with the team?
Crowd—They're all right, They are, They are.
They are all right, Who? Team, who? Team, who?
Team, Team, Team.

LOCOMOTIVE YELL

Rah, Rah, Rah, Rah.
Fight, Fight, Manual, Fight.
*Rah, Rah, Rah, Rah.
*Fight, Fight, Manual, Fight.
Rah, Rah, Rah, Rah.
Fight, Fight, Manual, Fight.
Rah, Rah, Rah, Rah.
Fight, Fight, Manual, Fight.
Manual Fight, Manual Fight,
Manual Fight, Fight, Fight.

*Getting faster as you go down the rahs and fights.

To students, new and old, the student Council extends a welcome that is genuine.

No student governing body can function to the greatest degree of efficiency without the whole-hearted and loyal co-operation of the student body. It is our desire that we may have the co-operation of the student body in school elections and all other activities.

In order to prevent a one-sided college education, we must participate in school activities. Because activities play such an influencing role in after life as well as in campus years, this phase of college life cannot be neglected.

Together we shall work for the advancement of K. S. T. C.

Sincerely yours,

Athol R. Baily.

President, Student Council.

STUDENT COUNCIL

The Student Council of K. S. T. C. of Pittsburg is the student governing body. The president is elected at an annual spring election by the student body as a whole, and two representatives from each class are chosen at the regular elections in the fall. The members serve for a full school year.

The Student Council was organized in 1919 because of the increasing need of such a group. Any problems which concern the students as a whole are dealt with by the council, and it is now responsible for a number of school activities, such as Commemoration Day, Hobo Day, Stunt Fest, school picnics, freshman rules, class organizations, and the honor point system.

CONSTITUTION OF THE STUDENT COUNCIL OF K. S. T. C.

Article I.

The name of this organization shall be the Student Council of K. S. T. C.

Article II.

The purpose of this organization is to make provisions whereby each school year there will be chosen from the various college classes a group (as hereinafter provided) of students who will be responsible for promoting every student activity of K. S. T. C. in the proper spirit and best interests of the institution.

Article III.

Section 1. The Student Council shall consist of nine members: a president chosen at large by ballot from the student body; and two representatives of the opposite sex from each class.

Sec. 2. The Secretary and Treasurer and such other officers as may be determined upon, shall be chosen by the Council from its own membership.

Article IV

The election of the President shall take place the first Thursday in May, and the remaining members shall be elected the third Thursday following the opening of school in the Fall. Provided further: that for purposes of organization this year (1919), all members of the Council shall be elected at such time as may be designated by the committee framing this constitution.

Article V

Section 1. The Council shall constitute a body to determine upon any, or all policies, affecting the best interests of the student body which may

come up during the school year, provided there is already in existence no other organization in school to which the settlement of the same by reason of its origin or nature should be referred (Y. M. C. A., Y. W. C. A., Athletic Council, etc.); and which, from time to time—as may be warranted by changing conditions—shall initiate such new policies or measure as it sees fit.

Sec. 2. In no case shall any action be taken which is contradictory to the established policies of the institution, unless such action is agreed upon in conference with a faculty committee.

Sec. 3. No business shall be legally transacted unless each of the classes is represented. Provided further: should any class refuse representation at any two consecutive meetings, the Council may legally transact any business at the third meeting in the absence of the representatives of said class.

Sec. 4. No action of the Council shall be considered legal if passed in the absence of more than two members.

Sec. 5. There shall be one regular meeting of the Student Council every two weeks of the school year, excepting summer school; and as many special meetings as the President of the Council may see fit to call.

Sec. 6. All rulings of the Council shall take effect at such time as may be designated by the Council.

Article VI

Section 1. Any eligible person wishing to become president of the Council must file a petition to that effect with the Secretary of the Student Council one week before election; and said petition must be signed by at least twenty-five (25) College students; provided further, that for purposes of organization this year (1919), such petitions shall be filed with the committee framing this constitution.

Sec. 2 All students in order to be eligible to vote must register, stating class to which they belong, at such time and place as may be designated by the Council.

Sec. 3. Registration must close at least thirty-six (36) hours prior to opening of the polls for the primary election.

Sec. 4. A primary election shall be held under the jurisdiction of an election board designated by the Student Council on Tuesday before election day from 9 a. m. to 5 p. m. in such room or rooms as may be designated by the Student Council; and which room or rooms shall be supplied with the necessary booths, ballot boxes, etc.

Sec. 5. The two persons receiving the highest number of votes at the primary shall be considered nominees for the election.

Sec. 6. Ballots for the primary and the election shall be printed, or typewritten, and all voting shall be done in secret.

Sec. 7. For election day all regulations used for the primary shall be followed except that the candidate receiving the highest number of votes shall be declared president.

Sec. 8. In any case of a tie vote, the Council shall be the deciding factor, and in all other matters in any way pertaining to the election of a president not herein provided for, the Council shall be supreme.

Article VII

This constitution may be amended by a two-thirds vote of the Council in regular session; and all such amendments must be referred to each of the four classes. Said amendments shall take effect and be in force as soon as three-fourths of the classes have ratified them.

BY-LAWS OF THE STUDENT COUNCIL AT K. S. T. C., PITTSBURG

BY-LAW I

Section 1. Any eligible person wishing to become an officer (president, vice-president, secretary, treasurer, Student Council member) of either of the four (4) classes of the college must file a petition to that effect with the President of the Student Council the Friday preceding the general election, which shall be held the third Thursday of the school year, and said petition must be signed by at least ten (10) members of the class of which he desires to become an officer and must state which office he desires.

Sec. 2. All students in order to vote must register, stating class to which they belong, at such time and place as may be designated by the president of the Student Council.

Sec. 3. Registration must close at least twenty-four hours prior to the opening of the polls for the primary election.

Sec. 4. A primary election shall be held under the jurisdiction of an election board designated by the President of the Student Council, on Tuesday before election day, from 9 A. M. to 5 P. M. in such room or rooms as shall be designated by the President

Sec. 5. The two (2) persons receiving the highest number of votes for each office at the primary shall be considered the nominees for the election.

Sec. 6. Ballots for the primary must be printed or typewritten and all balloting must be done in secret.

Sec. 7. For election day all regulations used for the primary shall be followed, except that the candidate for each office of each class receiving the highest number of votes shall be declared elected.

Sec. 8. In case of a tie vote another election for that office shall be held within one week.

Sec. 9. In case there is no election for an office, the Student Council as then formed shall have the power of appointing.

BY-LAW II

(Repealed by By-law XIX.)

BY-LAW III

Sec. 1. Each student shall be allowed to hold school offices for which the points allotted shall not exceed ten (10).

Sec. 2. The following shall be the number of points allotted to the different offices:

President of the Student Council.....	10
Editor of the Collegio.....	10
Business Manager of the Collegio.....	10
Editor of the Kanza.....	10
Business Manager of the Kanza.....	10
President of the Y. M. C. A.....	10
President of the Y. W. C. A.....	10
President of the College Classes.....	7
President of the Gorillas.....	7
President of the Kampus Kats.....	7
President of the W. A. A.....	7
President of the Newman Club.....	7
President of Sororities and Fraternities.....	7
President of Vocational Club.....	7
Head Cheer Leader.....	7
President of all organizations not listed.....	5
Members of the Student Council.....	5
Assistant Cheer Leaders.....	5
Captain of Varsity Football Team.....	5
Captain of Varsity Track Team.....	5
Captain of Varsity Basketball Team.....	5
Kanza Staff Members.....	2½
Vice-presidents of all organizations except Student Council.....	2½
Secretaries of all organizations except Student Council.....	2½
Treasurers of all organizations except Student Council.....	2½
Secretary-Treasurer of any organization.....	4

Members of the Athletic Council.....	2½
Members of Y. M.-Y. W. cabinets.....	2½
Business manager of all organizations not listed	3
Members of Board of Publications.....	5

Sec. 3. Every student must register, as soon as elected, the offices that he holds, with the secretary of the Student Council, and in case a student is elected to several offices for which the points shall exceed ten (10), he shall be allowed three days after notification by the Student Council to choose from which office he shall withdraw and shall notify the secretary of the Student Council of his decision. In case no resignation is received from such student, the Student Council shall decide which offices he shall retain.

Sec. 4. In case of new offices being originated or of dispute arising over the number of points to be allotted an office, the Student Council shall decide such questions by a majority vote.

Sec. 5. The provision of this by-law shall take effect at the opening of school in September, 1923.

BY-LAW IV

Article 1. The officers of classes shall be as follows: Each class shall have one president, one vice-president, one secretary-treasurer, one woman representative to the Student Council, and one man representative to the Student Council.

This by-law will become effective upon passage.

BY-LAW V

Article 1. If for any reason any class officer has to give up his office before the expiration of his term of office his successor shall be chosen at a meeting duly called by the president of his class. Two-thirds of the class membership must be present at this meeting. The class shall elect by vote in any manner it sees fit a person whom it wishes to recommend to the Student Council for appointment to the vacancy. The Student Council will then determine the eligibility of the person so recommended. If the council finds that the person is eligible it will then officially declare said person elected to the office.

This by-law will become effective upon passage.

BY-LAW VI

Any member of the Student Council who absents himself without authority from the President of the Student Council to do so, from three regular meetings of the Student Council shall forfeit his membership in the Student Council. The class whom the expelled member represented in the Student Council

COLLEGE SERVICE

1606 South

Kanotex Gasoline — Per

Car Washing

Lunch Room — Beau

Drive in and Get You

FF

Station owned

Bellairs-W

Pittsburg

E SUPER STATION

Broadway

coil Motor Oil — Lee Tires
and Greasing

y Shop — Barber Shop

r Car Vacuum Cleaned

REE

and operated by

ight Oil Co.

, Kansas

shall immediately elect another person of the same sex as the person expelled to fill the vacancy. The President of the Council shall not excuse a member of the Council from attendance at a regular Council meeting except in cases of extreme urgency. This by-law effective upon passage.

BY-LAW VII

A person shall have been enrolled in this institution for resident work for at least two semesters before he is eligible for the Presidency of the Student Council. This by-law effective upon passage.

BY-LAW VIII

The Student Council of the Kansas State Teachers College of Pittsburg shall hold in reserve twenty per cent (20 per cent) of its net income of money from any source whatsoever during the administration of any Council, said fund to be turned over by the Secretary to the President of the college at the end of each school year and kept in the vaults of the college until the opening of school in September in the following school year, when the fund will be turned over to the President of the Student Council for that year who will see that the money so received is deposited in a savings bank to the credit of the Council, by the Council's treasurer, who will check against the fund for any purpose, when directed to do so by the Student Council in regular session. This by-law is effective upon passage.

BY-LAW X

When for any reason whatsoever the office of President of the Student Council becomes vacant during the school year, the Student Council shall have power to appoint, by a majority vote of the Council's membership, the person who shall succeed to the office which was vacated.

Any person so appointed shall not serve, by reason of such appointment, longer than the duration of the unexpired term which he was elected to fill. This by-law shall be effective on the opening day of school in September, 1924.

BY-LAW XI

In sessions of the Student Council where there is a tie vote when voting on any question which requires a majority only for adoption, the President of the Student Council may cast the deciding vote. Effective April 2, 1924.

BY-LAW XII

Repealed by By-Law XVII.

BY-LAW XIII

No person shall be eligible to hold the office of President of the Student Council, Editor of the Collegio, Business Manager of the Collegio, or any other college class, unless said person is enrolled in K. S. T. C. with full rank and can comply with all the other provisions of this constitution and by-laws relative to eligibility of candidates. This by-law effective immediately upon adoption.

BY-LAW XIV

No person shall be eligible to vote in college elections or college class elections unless said person is enrolled in K. S. T. C. with full college rank and can comply with all other provisions of this constitution and by-laws relative to the eligibility of voters. This by-law effective immediately upon adoption.

BY-LAW XV

Within two calendar months after the opening day of school in September of each school year the Student Council of K. S. T. C. shall have printed and ready for distribution to members of the student body and the public at large, copies of the Student Council constitution and by-laws printed in pamphlet form. This pamphlet will contain in addition to the Student Council constitution and by-laws, a calendar of all school activities for the current year and any other matter of an informational or advertising nature which the Council may see fit to include. It is particularly desired that this pamphlet be distributed on enrollment day.

BY-LAW XVI

The officers of the Beta Chapter Xi Phi leadership fraternity shall not be awarded points under the existing point system. The Council recognizes the worth of this group as a campus organization and does not wish to interfere with its operation by making its officers subject to the point system. On account of the peculiar make-up of this organization, its members being school leaders and therefore having near the maximum number of points, the Council believes this action necessary.

BY-LAW XVII

Article 1. The Gorillas, men's pep organization of K. S. T. C., shall be given complete charge of the cheer leading staff of the college with power to make such provisions as they see fit in regard to the number, qualifications, means of selection, and tenure of office of said cheer leaders.

Article 2. By-law Number XII of the Student Council is hereby repealed.

Article 3. This by-law shall become effective immediately after its passage by the Student Council.

BY-LAW XVIII

No person shall be eligible to hold the office of Editor of the Collegio unless said person has completed five (5) hours credit in the Journalism courses of the Department of English, and can comply with all other provisions of this Constitution and by-laws relative to eligibility of candidates. This by-law becomes effective upon publication in the Collegio.

BY-LAW XIX

Article 1. Sec. 1. There is hereby created a board of seven members to be known as the Board of Publications which shall exist for the purpose of sponsoring and supervising all student publications other than club, fraternal, and departmental journals.

Sec. 2. Organization of the board: The board shall consist of three faculty members and four students. Faculty members shall be appointed by the President of the college and shall serve as long as they are connected with the college or until their resignation is accepted by the board. Immediately upon passage of this by-law the senior, junior, and sophomore classes of the college shall elect from a list of three nominations made by the now existing Kanza Advisory Board, one student each to serve upon the board. The Student Council shall likewise elect from three nominations made by the now existing board one member from the student body at large.

Sec. 3. Continuity of the board: Vacancies occurring in any one or all of the faculty positions shall be filled by appointment made by the President of the college. Each student member of the Board of Publications shall serve as long as he is continuously enrolled as a fully accredited resident student of the college, or until his resignation is accepted by the board, or until the board, by a vote of five out of seven shall request his resignation. If the fourth student position on the board be vacant the Board of Student Publications shall recommend three candidates from the student body at large from which list the Student Council shall elect one person to fill the vacancy.

Article II. Powers of the Board. The board shall make and enforce policies and rules governing the sponsoring and supervision of the publications over which it has jurisdiction. The board shall by a vote of five of its members have authority to hire the major staff members of the publications over which

it has authority, and to fix the salaries of the staff members.

The board shall keep permanent records of the business of the publications from year to year.

The board shall approve major contracts entered into by the staffs of the various publications.

The board shall make its own by-laws, elect its own chairman, and determine its own rules of procedure.

Article III. All previous by-laws or parts of by-laws of the K. S. T. C. of Pittsburg Student Council which are in conflict with this law are hereby repealed.

HOW TO CHANGE ENROLLMENT

Every semester there are a few students who find that they have made some mistake in their enrollments and that it is necessary to make some changes or adjustments. These changes are made through the office of the Dean of the College, but the student must first secure the written consent of the head of the department in which he is majoring. Thus there are two things to do: first, go to the head of your department and talk over your schedule, having him fill out cards with which he is already provided; and second, take these cards to the dean's office and have him make the change.

It is very important that any necessary changes be correctly made for no student can receive credit for a course in which he has not been fully and properly enrolled.

All changes must be made within one week after enrollment.

SCHOOL ELECTIONS

Class officers and members of the Student Council are elected at the general election held the third Thursday after the opening of the fall semester. A primary election is held on the Tuesday before the general election for the purpose of eliminating all but two candidates for each office. Any person wishing to become a candidate for any of the offices to be filled must file a nominating petition bearing the signatures of ten of his classmates with the president of the Student Council on or before the Friday preceding the election. Students must register at places to be provided in order to be eligible to vote.

Dates for the fall election are:

Friday, Sept. 19—Nominating petition must be filed with president of Student Council.

Tuesday, Sept. 23—Primary election.

Thursday, Sept. 25—General election.

DRAMATICS

Debating and Oratory in K. S. T. C. have assumed the proportions of major sports. Last year 13 students engaged in 27 debates, and 12 entered the preliminary national contest. Eight debaters and two orators were sent to the National Pi Kappa Delta tournament in Ohio.

The usual oratorical contests and prizes will be available again this year.

Places on the debate squad are secured through competitive tryouts open to every student enrolled in the institution.

Students interested in debating should watch for announcements of the tryout date.

Students representing the institution in debate are eligible to membership in the national forensic fraternity—Pi Kappa Delta.

DRAMATICS

Each year the Arden Players present three plays under the direction of the Department of Speech. Any student in the college may try for a part in these plays. The time and place of the tryouts will be announced in assembly at the proper time.

There is also an evening of one-act plays given by the dramatic art class, and a play given by the senior class.

Participation in any play during a winter term makes a student a member of the Arden Players.

Initiation services are held once a year for all eligible persons wishing to join the National Dramatic Art Fraternity—Theta Alpha Phi.

ALL-SCHOOL PARTIES

All-school parties are held on Friday nights from time to time in the gymnasium. It is planned to hold a party at least once a month.

PORTER LIBRARY REGULATIONS

Library Hours

Monday to Friday—7:30 a. m. to 9:00 p. m.
Saturday—8:00 a. m. to 5:00 p. m.
Library is closed on Thursday from 10:00 to 11:10
for Assembly.

Reference Books

On the shelves in the Main Reading Room are the reference books, such as dictionaries, encyclopedias, yearbooks, etc. Reference books are indicated in the general catalog by the letter "R" These books are not checked out of the library, but must be used in the Main Reading Room. Permission to borrow the book for class use may be obtained at the Reference Desk, and the book must be returned to the Reference Desk at the close of the class period.

Periodicals

The bound periodicals are shelved in the stacks and in the Main Reading Room. They are not to be checked out of the library for home use, but may be borrowed for class use and must be returned at the close of the class period. Current magazines may be drawn out after 8:30 p. m. and are to be returned by 8:10 the next morning. Older unbound issues may be kept for one week only.

Reserved Books

Books for required reading are placed on reserve in the Delivery Room, on the first floor. They are not to be taken from the library during the day without special permission, but may be borrowed for home use after 8:30 p. m., and must be returned by 8:10 the next morning. "Reserve" books in use at 8:30 p. m. must be returned to the Loan Desk and recharged before being taken from the library, otherwise the fine for taking books "without permission" will be imposed. Lists of books placed on reserve are posted on the bulletin board. Students should ask for books by author and title.

Literary Readings

Books for Literary Readings may be drawn out for two weeks. Identification cards are issued to students enrolled in this course, and these cards must be presented each time a book is issued.

High School and Junior High Library

The southeast room on the first floor is for the use of the high school and junior high, and is not to be used by College students for study purposes.

How to Obtain a Book at the Main Loan Desk

In the card catalog find the card which represents the book you wish to use. In the upper left corner of the card will be found the call number of the book. Fill out the Call Slip and give it to the assistant at the Loan Desk, who will bring the book from the stacks. Books not on reserve may be kept for two weeks.

If you do not know how to use the card catalog, or what books will give you the desired information, consult the Reference Librarian in the Main Reading Room. The Reference Librarian is always ready and willing to assist students in finding what they want in the library.

No ink should be used in the library except in fountain pens.

Fines

Five cents per day is charged for two-week books and periodicals kept overtime.

Ten cents for the first hour and one cent for each additional hour is charged for "Reserve" books. Reserve books not returned by 8:20 a. m. are counted one hour overdue. If one day overdue, the fine is 25 cents per day.

A fine of 25 cents is charged for reference books and bound magazines taken without permission.

Books will not be issued to students having fines one month unpaid, without the consent of the librarian.

Extracts From ROOMING REGULATIONS

Closing Hours for Women Students. The hours of closing the houses, from September to April, shall be 10:15 p. m., except Friday and Saturday evenings, when it shall be 11:15 p. m. From April to September, closing hours extend to 10:30 p. m. and 11:30 p. m., respectively.

Women students attending all-school functions which extend over the regular closing hour will be given a reasonable length of time to reach their rooming places.

Women students shall not visit other towns during evenings without advising their housemother as to their intention, and any extension of closing hour is arranged before student leaves her rooming place. Sunday night closing hours are not extended on account of late arrival from overland trip from week-end visit.

Quiet Hours. General quiet hours are observed after 8:00 p. m. At any time during the day boisterousness throughout the halls, or corridors, or calling from one floor to the other, is to be discouraged.

Parlor Privileges. Parlor privileges shall be provided for students at reasonable times. Any features undesirable to either housemother or student should be reported to the Rooms Committee. Under no consideration will women students be permitted to receive gentlemen callers in their rooms or to entertain them later than the "closing hour."

Student Absences Over Night. Women students who are to be absent from their rooming places over night must leave the address with the housemother and have the housemother's approval of all details before they leave the house. This absence should be reported by the housemother the following school day to the office of the Dean of Women.

Change of Rooming Place. Students are not to change rooming places during the semester without notifying the Rooms Committee before such change is made. Women students must secure permission from the Dean of Women before any change is made.

Willful violation of the above rule will be considered sufficient reason for dismissal from College.

Students are required to secure rooms in houses on the approved list, and any violation of this regulation automatically relieves a student of class attendance and he forfeits his grades for the current semester.

MY TIME BUDGET

(How I spend my allowance of 24 hours a day)

	Hours a day	Hours a wk.
Sleep
Meals
Recitations (classroom and lab.).....
Study (preparation for curriculum work)
General reading (current periodicals, fiction, drama, verse, essay, etc., outside of assignments made in connection with curriculum work) and reflective thinking
.....
.....
.....
.....
.....
.....
.....
Extra-curriculum activities (commit- tee work, practice, attendance at meetings, preparation of talks for meetings, etc.)
Employment (to earn money).....
Recreation (including both re-crea- tion and "wreck-reation," fellow- ship with friends, parties, socials, hikes, movies, etc.).....
Private worship (Bible study and prayer for personal spiritual growth)
Other things:
.....
.....
.....
.....
Total.....	24	168

(Arranged by Harry Bone)

FALL CLASS SCHEDULE

Hour	Subject	Ct. No.	Hr. Ct.	Room	Professor
.....
.....
.....
.....
.....
.....
.....
.....

10:10 Tuesday—Y. M., Y. W.

10:10 Thursday—Assembly

DAILY REMINDER

September		September
	MONDAY	15
Entrance exams.		
	TUESDAY	16
Enrollment	Y. M. C. A.—Y. W. C. A.	
10	WEDNESDAY	17
Class work begins		
11	THURSDAY	18
First assembly—Carney Hall	Assembly	
12	FRIDAY	19
13	SATURDAY	20
14	SUNDAY	21

DAILY REMINDER

September

October

22

MONDAY

29

23

TUESDAY

30

Y. M. C. A.—Y. W. C. A.

Y. M. C. A.—Y. W. C. A.

24

WEDNESDAY

1

25

THURSDAY

2

Assembly

Assembly

26

FRIDAY

3

Football, Wichita here

27

SATURDAY

4

Football, N. E. O. T. C., there

28

SUNDAY

5

DAILY REMINDER

October		October
6	MONDAY	13
7	TUESDAY	14
Y. M. C. A.—Y. W. C. A.		Y. M. C. A.—Y. W. C. A.
8	WEDNESDAY	15
9	THURSDAY	16
Assembly		Assembly
10	FRIDAY	17
Football, Washburn there		Football, Hays here
11	SATURDAY	18
		Football, Hays there
12	SUNDAY	19

DAILY REMINDER

October		October
20	MONDAY	27
<hr/>		
21	TUESDAY	28
<hr/>		
Y. M. C. A.—Y. W. C. A.		Y. M. C. A.—Y. W. C. A.
22	WEDNESDAY	29
<hr/>		
23	THURSDAY	30
<hr/>		
Assembly		Assembly
24	FRIDAY	31
<hr/>		
Football Southwestern there		Football, C. of E. here
25	SATURDAY	1
<hr/>		
		Football—C. of E., there
26	SUNDAY	2
<hr/>		

DAILY REMINDER

November		November
3	MONDAY	10
		Mid-semester term opens
4	TUESDAY	11
		Y. M. C. A.—Y. W. C. A.
5	WEDNESDAY	12
6	THURSDAY	13
		Assembly
7	FRIDAY	14
		Football, Springfield here
8	SATURDAY	15
		Football, Emp. Tchrs, there
9	SUNDAY	16

DAILY REMINDER

November

November

17

MONDAY

24

18

TUESDAY

25

Y. M. C. A.—Y. W. C. A.

Y. M. C. A.—Y. W. C. A.

19

WEDNESDAY

26

Assembly
Thanksgiving dismissal

20

THURSDAY

27

Assembly

No game scheduled

21

FRIDAY

28

Football, St. Benedicts there

22

SATURDAY

29

Football—Springf'd T. there

23

SUNDAY

30

DAILY REMINDER

December

December

1

MONDAY

8

Resumption of classes

2

TUESDAY

9

Y. M. C. A.—Y. W. C. A.

Y. M. C. A.—Y. W. C. A.

3

WEDNESDAY

10

4

THURSDAY

11

Assembly

Assembly

5

FRIDAY

12

6

SATURDAY

13

7

SUNDAY

14

DAILY REMINDER

December

December

15

MONDAY

22

16

TUESDAY

23

Y. M. C. A.—Y. W. C. A.

17

WEDNESDAY

24

18

THURSDAY

25

Basketball, Ark. U. there
Assembly

Christmas

19

FRIDAY

26

Basketball, Ark. U. there
Dismissal for Christmas

20

SATURDAY

27

21

SUNDAY

28

DAILY REMINDER

Dec., '29; Jan., '30

January

29	MONDAY	5
Resumption of work		
30	TUESDAY	6
Y. M. C. A.—Y. W. C. A.		
31	WEDNESDAY	7
1	THURSDAY	8
Assembly		Assembly
2	FRIDAY	9
3	SATURDAY	10
4	SUNDAY	11

DAILY REMINDER

January		January
12	MONDAY	19
Basketball, Hays there		
13	TUESDAY	20
Basketball, Washburn there.		
Y. M. C. A.—Y. W. C. A.		Y. M. C. A.—Y. W. C. A.
14	WEDNESDAY	21
15	THURSDAY	22
Assembly		
16	FRIDAY	23
End of first semester		
17	SATURDAY	24
Basketball, Wichita here		
18	SUNDAY	25

WINTER CLASS SCHEDULE

Hour	Subject	Ct. No.	Hr. Ct.	Room	Professor
.....
.....
.....
.....
.....
.....
.....

10:10 Tuesday—Y. M., Y. W.

10:10 Thursday—Assembly

DAILY REMINDER

January February

26 MONDAY 2

Second semester enrollment

27 TUESDAY 3

Class begins

Y. M. C. A.—Y. W. C. A.

Y. M. C. A.—Y. W. C. A.

28 WEDNESDAY 4

Basketball,
Emporia Teachers here

29 THURSDAY 5

Assembly

Assembly

30 FRIDAY 6

Basketball,
College of Emporia here

31 SATURDAY 7

Basketball,
Southwestern here

1 SUNDAY 8

DAILY REMINDER

February		February
9	MONDAY	16
Basketball, C. of E. at Emporia		
10	TUESDAY	17
Basketball, Emporia Teachers there Y. M. C. A.—Y. W. C. A.		
11	WEDNESDAY	18
12	THURSDAY	19
Assembly		
13	FRIDAY	20
Basketball, Hays here		
14	SATURDAY	21
15	SUNDAY	22

DAILY REMINDER

February

March

23

MONDAY

2

Basketball,
Southwestern there

24

TUESDAY

3

Basketball,
Wichita there

Y. M. C. A.—Y. W. C. A.

Y. M. C. A.—Y. W. C. A.

25

WEDNESDAY

4

26

THURSDAY

5

Commemoration Day
Assembly

Assembly

27

FRIDAY

6

Basketball, Washburn here

28

SATURDAY

7

2

SUNDAY

8

DAILY REMINDER

March		March
9	MONDAY	16
10	TUESDAY	17
Y. M. C. A.—Y. W. C. A.		Y. M. C. A.—Y. W. C. A.
11	WEDNESDAY	18
12	THURSDAY	19
Assembly		Assembly
13	FRIDAY	20
14	SATURDAY	21
15	SUNDAY	22

DAILY REMINDER

March		April
23	MONDAY	30
		Mid-semester term opens
24	TUESDAY	31
	Y. M. C. A.—Y. W. C. A.	Y. M. C. A.—Y. W. C. A.
25	WEDNESDAY	1
		Dismissal for Easter
26	THURSDAY	2
	Assembly	Assembly
27	FRIDAY	3
28	SATURDAY	4
29	SUNDAY	5

DAILY REMINDER

April

April

6

MONDAY

13

7

TUESDAY

14

Classes resumed

Y. M. C. A.—Y. W. C. A.

Y. M. C. A.—Y. W. C. A.

8

WEDNESDAY

15

9

THURSDAY

16

Assembly

Easter dismissal
Assembly

10

FRIDAY

17

11

SATURDAY

18

12

SUNDAY

19

DAILY REMINDER

April

April

20

MONDAY

27

Music Festival

21

TUESDAY

28

Music Festival
Resumption of work
Y. M. C. A.—Y. W. C. A.

Y. M. C. A.—Y. W. C. A.

22

WEDNESDAY

29

Music Festival

23

THURSDAY

30

Music Festival
Assembly

24

FRIDAY

1

Music Festival

25

SATURDAY

2

Scholarship Contest

26

SUNDAY

3

DAILY REMINDER

May		May
4	MONDAY	11
5	TUESDAY	12
	Y. M. C. A.—Y. W. C. A.	Y. M. C. A.—Y. W. C. A.
6	WEDNESDAY	13
7	THURSDAY	14
	Assembly	Assembly
8	FRIDAY	15
9	SATURDAY	16
10	SUNDAY	17

DAILY REMINDER

May		May
18	MONDAY	25
		Enroll summer term
19	TUESDAY	26
20	WEDNESDAY	27
21	THURSDAY	28
		Commencement
22	FRIDAY	29
23	SATURDAY	30
24	SUNDAY	31
Baccalaureate		

NOTES

1871-1872

1872-1873

1873-1874

1874-1875

1875-1876

1876-1877

1877-1878

1878-1879

NOTES

NOTES

College Beaute and Barber Shop

All lines of
Beauty Culture

Permanent Waving a
Specialty

In the Bellairs-Wright
Service Station

1608 S. Bdwy

Phone 444

Lochrie's Students Cafe

Home Cooking
You will like it.

Try us

In the Bellairs-Wright
Service Station

Clothing and Shoes

Special attention to approved college stylings.
We have served the men
of K. S. T. C. for years.

Sam & Oscar
CLOTHIERS
HOLDEN AND WARD