

Pittsburg State University

## Pittsburg State University Digital Commons

---

Football Programs, 1916-2013

University Archives

---

11-8-1940

### McPherson Bulldogs vs Pittsburg Gorillas

Kansas State Teachers College of Pittsburg

Follow this and additional works at: <https://digitalcommons.pittstate.edu/footb>

---

#### Recommended Citation

Kansas State Teachers College of Pittsburg, "McPherson Bulldogs vs Pittsburg Gorillas" (1940). *Football Programs, 1916-2013*. 6.

<https://digitalcommons.pittstate.edu/footb/6>

This Book is brought to you for free and open access by the University Archives at Pittsburg State University Digital Commons. It has been accepted for inclusion in Football Programs, 1916-2013 by an authorized administrator of Pittsburg State University Digital Commons. For more information, please contact [digitalcommons@pittstate.edu](mailto:digitalcommons@pittstate.edu).

Archives  
KD  
E26.5710  
940/11-8

# OFFICIAL PROGRAM

PRICE 5c

Friday, November 8, 1940  
2:00 p. m.

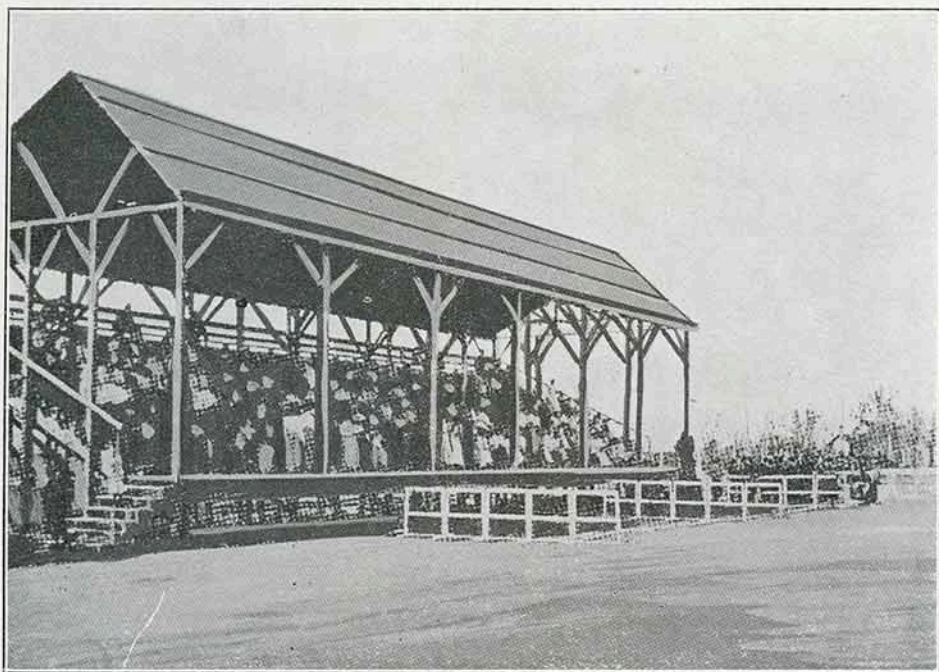
W. ANGWIN

McPherson Bulldogs  
vs.  
Pittsburg Gorillas



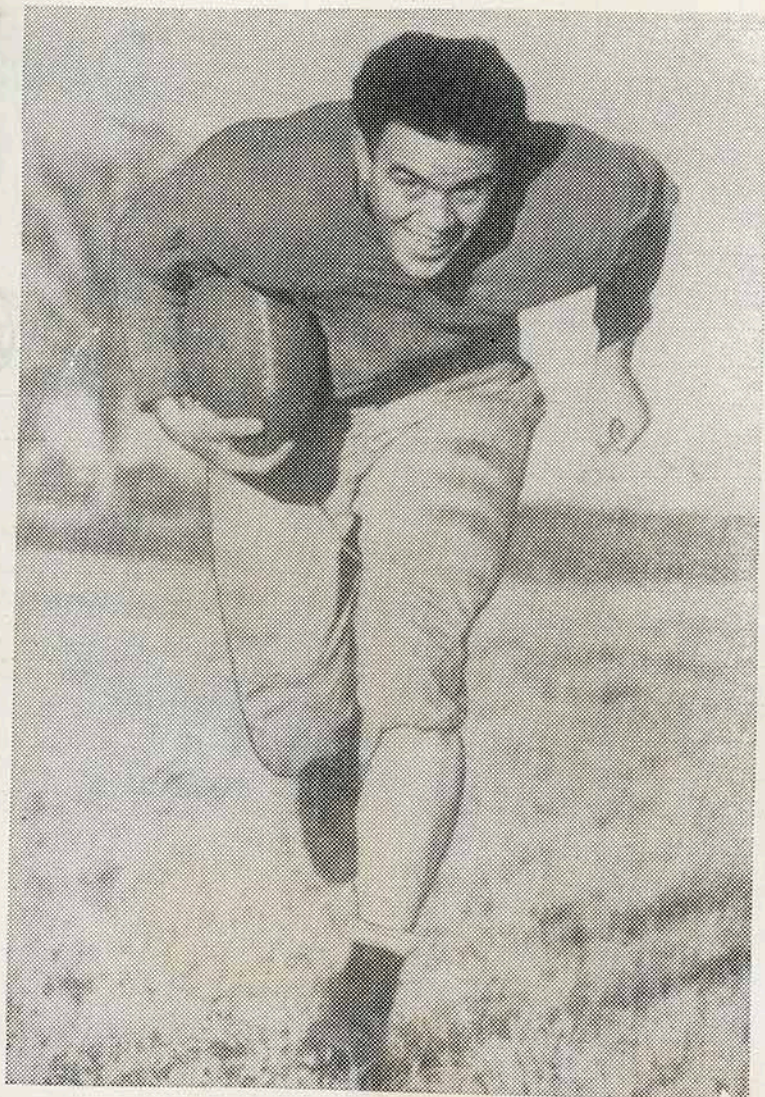


The College Band under the direction of Emile Michaux has been reorganized into a marching band to provide music for the games and entertainment between halves



Remember when the old Grandstand looked like this back in the days when K. S. T. C. was S. M. T. N.? It stood on the west side of the athletic field which is now largely occupied by Science Hall. The old Grandstand was built in 1910. Now the new and enlarged Brandenburg Stadium with its press box facilities stands as a memorial to the industry and aggressiveness of President Brandenburg





CHARLES DELLASEGA, Back



WAYNE WICKSTRUM  
Back



ACTION



## McPHERSON ROSTER

Coach Thomas Hayden  
Assistant Coach. C. R. Rock

20	Unruh
21	Maupin
22	Goering
23	Bullinger
24	Brust
25	Brubaker
26	Myers
27	Voth
28	Funk
29	Arnold
30	Dannelley
31	Reinecker
32	Hill
33	Vetter
34	Leonard
36	M. Knockstedt
37	Callan
38	Eberly
39	Cook
40	D. Knockstedt
41	French
42	Wanamaker
45	Myer

Probab

## McPHERSON

41	French
31	Reinecker
21	Maupin
26	Myers
22	Goering
45	Myer
42	Wanamaker
33	Vetter
23	Bullinger
24	Brust
37	Callan

Referee .....  
Umpire .....  
Headlinesman .....

NEXT H  
**Ft. Hays Tigers v**  
**Saturday, Nov**

Annual Homecoming Event

This program is being sold by members of the

Starting

aps

## PITTSBURG

93	Jursche	54
10	Sauer	57
99	Beard	79
	Gire	99
	Perdue	88
	Steele	96
	Sutterby	56
	Bill Morgan	90
	Kramer	72
	Hall	83
	Dellasega	86

Ted O'Sullivan

Ab Hinshaw

Lawrence Ely

## K. S. T. C. ROSTER

No.	Name	Position	Wt.	Home
53	McDonald, Harry	Back	165	Arma
54	Jursche, Leon	End	175	Frontenac
55	Shonk, Ray	Guard	180	Pittsburg
56	Sutterby, Lee	End	185	Blue Mound
57	Sauer, Frank	Tackle	220	Brownell
58	Dugan, Keith	Tackle	185	Ft. Scott
64	Begando, Joe	Back	145	Pittsburg
65	James, J. T.	End	170	Arkansas City
66	Walsh, Tom	Back	165	Leavenworth
67	Jones, Melvin	End	170	Gridley
69	Abell, Glen	Back	150	Olathe
70	Weir, Forrest	Center	170	Miami, Okla.
71	Fowler, Bill	Back	170	Arcadia
72	Kramer, Woodrow	Back	160	Olathe
73	Emery, Frank	Back	175	Nevada, Mo.
74	Archer, Chas.	End	170	Larned
75	Wickstrum, Wayne	Back	170	Leonardville
76	Melcher, Geo.	Back	165	Clay Center
77	Morgan, Jack	Back	160	Pittsburg
78	Ridenour, Eugene	Guard	165	Pittsburg
79	Beard, Carl	Guard	170	Pittsburg
80	Dessinger, Morris	Guard	175	Ozawkie
81	Salb, Richard	Center	185	Hartford
82	Gardner, Gerald	End	175	Clay Center
83	Hall, Vernon	Back	170	Parsons
84	Steen, Robert	Back	185	Hutchinson
85	Brim, A. M.	End	180	Pittsburg
86	Dellasega, Chas.	Back	170	Frontenac
87	Bottger, Merl	End	190	Manhattan
88	Perdue, Fred	Guard	180	Coffeyville
89	Spigarelli, Deno	Guard	185	Frontenac
90	Morgan, Bill	Back	180	Pittsburg
91	Anderson, Glenn	Back	180	Hutchinson
93	Byerley, Keith	Tackle	190	Minneola
94	Tims, Ed	Guard	200	Pittsburg
95	Mishmash, Harold	Center	190	Pittsburg
96	Steele, Alfred	Tackle	200	Pittsburg
97	Holmes, Vernon	Tackle	195	Blue Mound
99	Gire, Kenneth	Center	210	Pittsburg

ME GAME

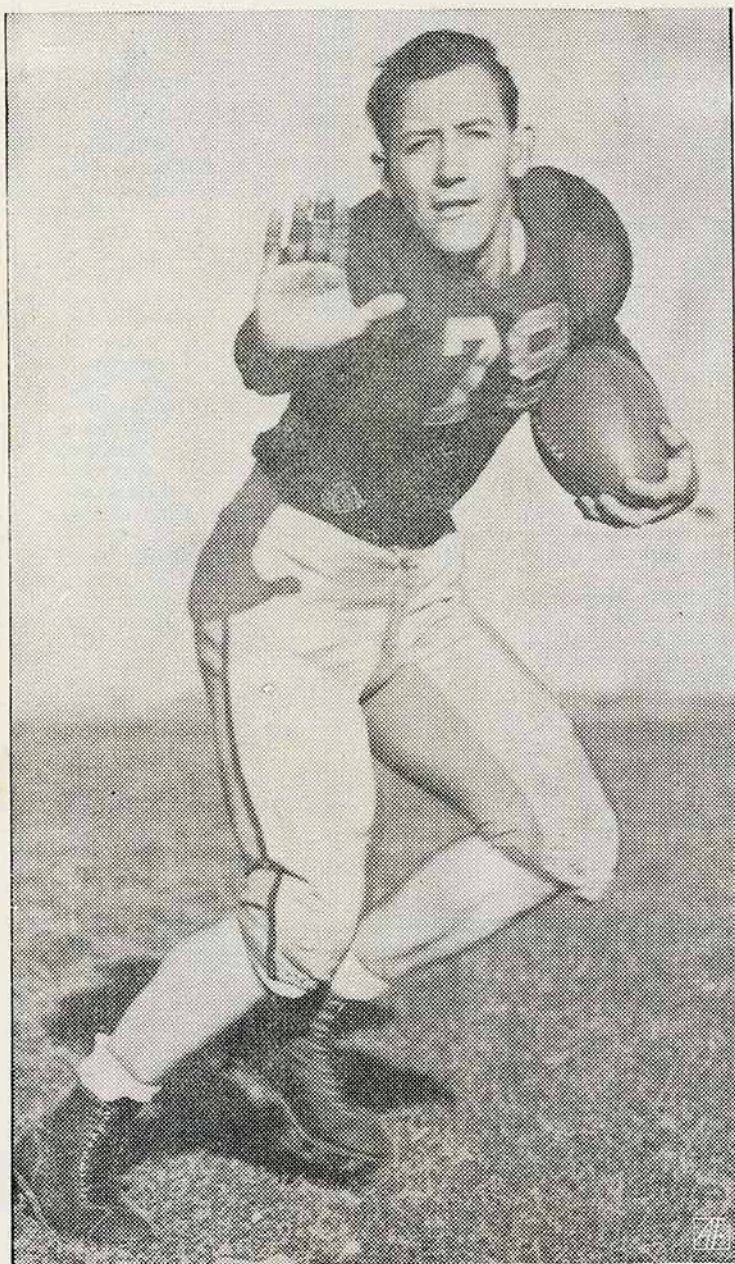
# Pittsburg Gorillas

ber 16, 2 p. m.

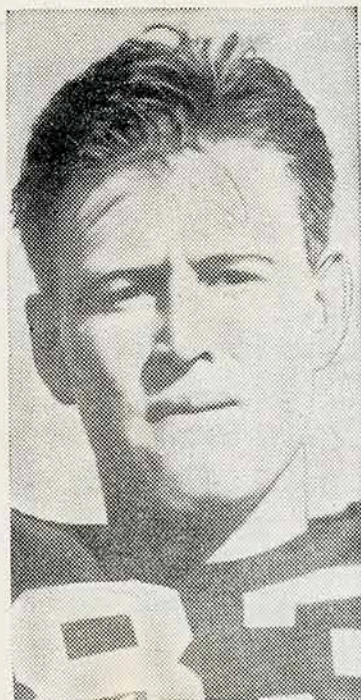
l Be Observed At This Game

ub of K. S. T. C. Hats off to a live wire bunch.





GEORGE MELCHER, Back



VERNON HALL  
Back



HAROLD MISHMASH  
Center



The following Pittsburg business firms have cooperated with the Kansas State Teachers College in advertising this game.

---

American Service Company

Arma Elevator Company

Bee Hive Cafe

Bumgarner Tire Service

Caskey Motor Company

Coca Cola Bottling Co.

Dunham Laundry

Ellsworth Undertaking Co.

Fadler Produce Company

Ferguson Studio

FOX Theatres

Gordon Transit Co.

Harry's Cafe

The Headlight and The Sun

Hull & Dillon Packing Co.

Jim's Bar-B-Que

The finest of foods

Kansas Gas & Electric Co.

Kenny Gibson

613 North Broadway

Long-Bell Lumber Co.

Montgomery Ward and Co.

Pepsi-Cola

Dr. W. T. Plumb

Puritan Dairy

Safety Auto Supply

312 North Broadway

Schnackenberg Dairy

E. K. Smith Funeral Home

O. L. Stamm, Insurance

Ward-Bobbitt Funeral Home

Ernie Williamson Music House

---

Patronize These Advertisers