

Pittsburg State University

Pittsburg State University Digital Commons

Football Programs, 1916-2013

University Archives

11-2-1940

St. Benedict Ravens vs Pittsburg Gorillas

Kansas State Teachers College of Pittsburg

Follow this and additional works at: <https://digitalcommons.pittstate.edu/footb>

Recommended Citation

Kansas State Teachers College of Pittsburg, "St. Benedict Ravens vs Pittsburg Gorillas" (1940). *Football Programs, 1916-2013*. 7.

<https://digitalcommons.pittstate.edu/footb/7>

This Book is brought to you for free and open access by the University Archives at Pittsburg State University Digital Commons. It has been accepted for inclusion in Football Programs, 1916-2013 by an authorized administrator of Pittsburg State University Digital Commons. For more information, please contact digitalcommons@pittstate.edu.

A full-page illustration of a football player in a red uniform with the number 10, running with the ball. He is wearing a brown helmet and has a determined expression. The background is a stylized landscape with a blue sky, yellow ground, and green grass at the bottom.

Welcome Grads!

OFFICIAL
PROGRAM

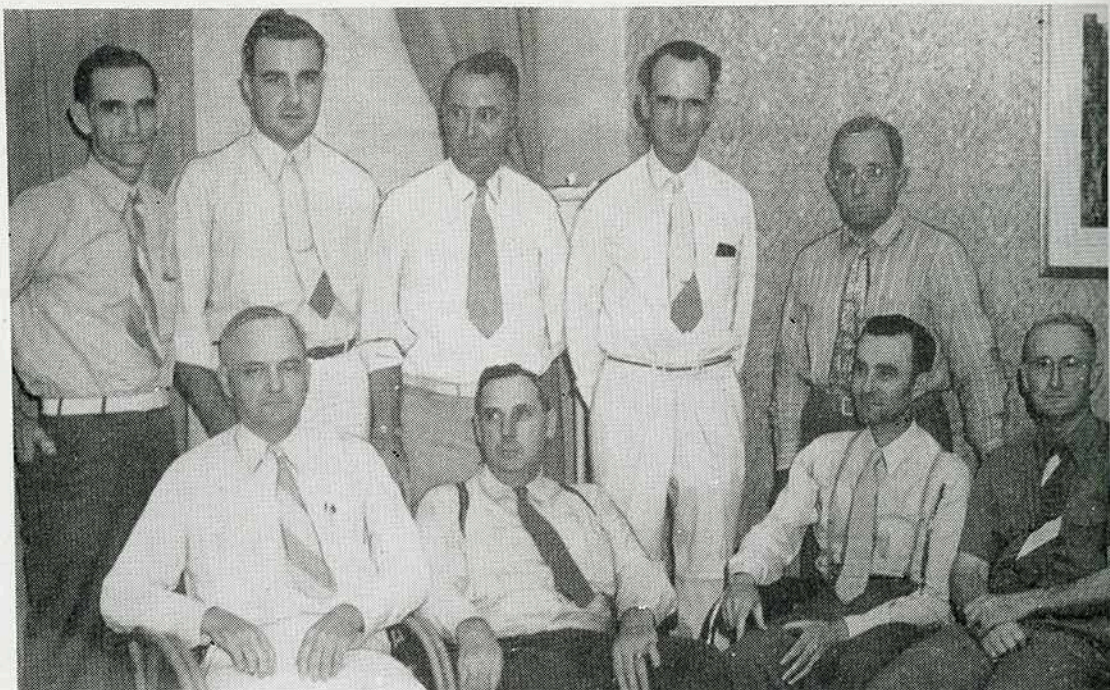
PRICE 10c

Saturday,
Nov. 2, 1940
1:00 p. m.

St. Benedict Ravens
vs.

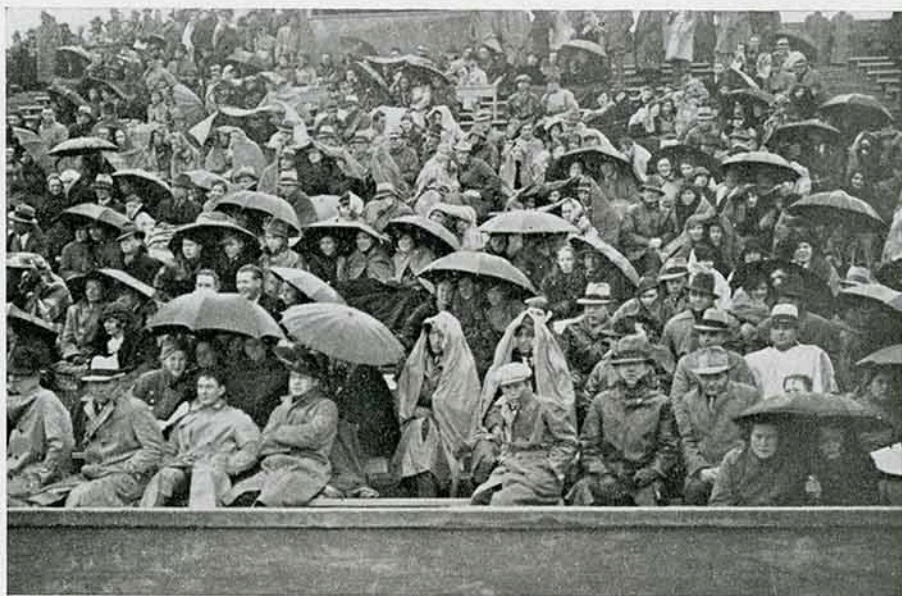
Pittsburg Gorillas

HOMECOMING GAME



ATHLETIC COUNCIL

Top Row—F. C. German; Harold Perry; R. L. Schwanzle; "Doc" Weede; C. R. Wasser. Bottom Row—J. R. Wells; S. L. Householder, chairman; Ernest Mahan; H. V. Hartman. Note: R. L. Schwanzle and Harold Perry are on leave of absence and Paul Murphy with W. L. Friley are added members.



Weather doesn't mean a thing to an honest-to-goodness, dyed-in-the-wool, football fan.

The Coaches

THE RAVEN PILOTS

Don Elser, head coach, and Marty Peters, his assistant, have been directing athletics at St. Benedict's college since the fall of 1937. A harmonious coaching team, they have been slowly building up their players and establishing their system until the season of 1940 finds them with as fine a squad of outstanding performers as can be found in any other small college in the country.

An All-American in the line at Notre Dame, Peters has been absorbed with the problem of creating a tough forward wall heavier than that of most teams, with just as much speed if not more. This season, with the Ravens boasting a line averaging a little over 200 pounds, he seems to have succeeded.

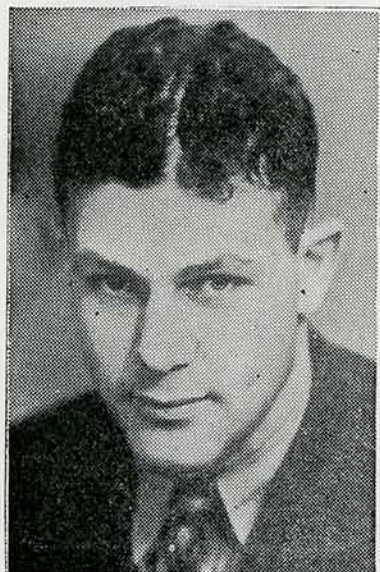
Elser, a fullback at Notre Dame under Hunk Anderson and Elmer Layden, has developed some fine backs since coming to the Raven household. On the squad today we have Irv Comp, Don O'Connor and Frank Lynch, all fine ball carriers and hard hitters. In the past Elser's coaching successes were with such well known Raven ball handlers as Joe Weiler and Don Martin, quarterbacks; Leo Danaher and Joe Quigley, halfbacks.

"Doc" Weede
Athletic Director

John Lance
Basketball Coach

Charley Morgan
Football Coach

Prentice Gudgen
Assistant Coach



DON ELSER



MARTY PETERS

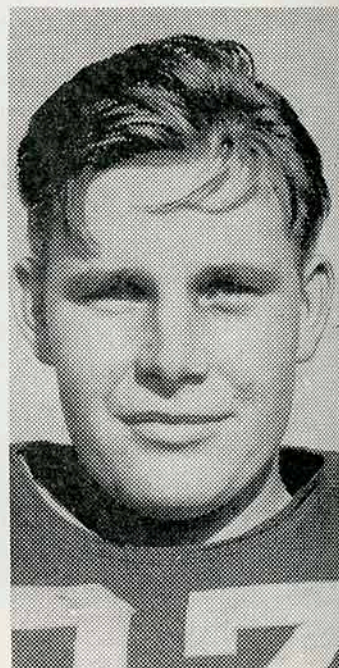
Yea Gorillas!



GERALD GARDNER
End



LEON JURSCHE
End



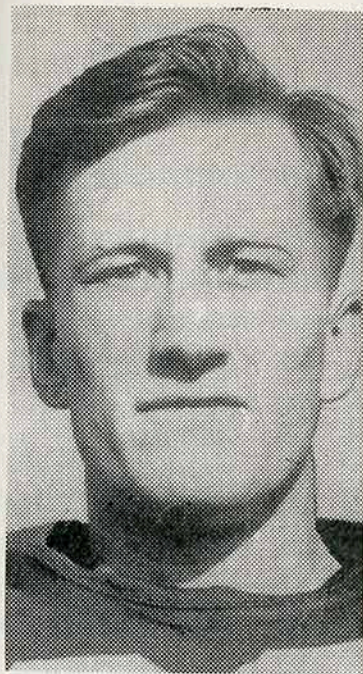
VERNON HOLMES
Tackle



MELVIN JONES
End

Majorette Katherine Magnetti, senior from Cherokee, Kans.

Fight! Fight!



FRED PURDUE
Guard



KEITH DUGAN
Tackle



RAY SHONK
Guard



ALFRED STEELE
Tackle



Majorette Nadine Johnston, Sophomore from
McCune, Kansas.

ST. BENEDICT'S ROSTER

Don Elser, Head Coach; Marty Peters, Assistant

No.	Name	Position
20	Mulcahy	H Back
21	Miller	Quarter
22	Krause	Center
23	Alles	Quarter
24	Glavin	End
25	Jaraczewski	H Back
26	O'Connor	H Back
27	Ryan	Quarter
28	Massa	Guard
29	Conley	Center
30	Gergeni	End
31	Comp	H Back
32	Visnic	Guard
33	Vaessen	End
34	Cozzo	Guard
35	Donahue	End
36	Farrell	End
37	Blaney	H Back
38	McAlpin	Guard
39	Wojciechowski	End
40	Budreck	Full Back
41	Smith	Full Back
43	Hayes	Center
44	Grazda	Tackle
45	Lynch	Full Back
46	Brennan	Tackle
47	Dockery	Center
48	Conklin	Tackle
49	Foran	Tackle
50	Hoban	Full Back
51	McKeever	H Back
52	Hart	H Back
53	McDonald	Guard
54	Loika	Tackle

ST. BENEDICT'S

30	Steve Gergeni
48	George Conklin
32	Larry Visnic
47	Joe Dockery
38	Bob McAlpin
49	Nick Foran (C)
35	Jake Donahue
23	Jim Alles
31	Irv Comp
26	Don O'Connor
45	Frank Lynch

Referee

Umpire

Head Linesman

NEXT H

McPherson vs. Friday, Nove

Former scores between the Gorillas and St. Benedict's
1926, 58 to 0 in 1927, 28

This program is being sold by members of the

arting

S

PITTSBURG

Jursche	54
Sauer	57
Beard	79
Gire	99
Perdue	88
Steele	96
Sutterby	56
Bill Morgan	90
Kramer	72
Hall	83
Dellasega	86

E. A. Thomas	
Dick Sklaar	
Dick Godlove	

K. S. T. C. ROSTER

No.	Name	Position	Wt.	Home
53	McDonald, Harry	Back	165	Arma
54	Jursche, Leon	End	175	Frontenac
55	Shonk, Ray	Guard	180	Pittsburg
56	Sutterby, Lee	End	185	Blue Mound
57	Sauer, Frank	Tackle	220	Brownell
58	Dugan, Keith	Tackle	185	Ft. Scott
64	Begando, Joe	Back	145	Pittsburg
65	James, J. T.	End	170	Arkansas City
66	Walsh, Tom	Back	165	Leavenworth
67	Jones, Melvin	End	170	Gridley
69	Abell, Glen	Back	150	Olathe
70	Weir, Forrest	Center	170	Miami, Okla.
71	Fowler, Bill	Back	170	Arcadia
72	Kramer, Woodrow	Back	160	Olathe
73	Emery, Frank	Back	175	Nevada, Mo.
74	Archer, Chas.	End	170	Larned
75	Wickstrum, Wayne	Back	170	Leonardville
76	Melcher, Geo.	Back	165	Clay Center
77	Morgan, Jack	Back	160	Pittsburg
78	Ridenour, Eugene	Guard	165	Pittsburg
79	Beard, Carl	Guard	170	Pittsburg
80	Dessinger, Morris	Guard	175	Ozawkie
81	Salb, Richard	Center	185	Hartford
82	Gardner, Gerald	End	175	Clay Center
83	Hall, Vernon	Back	170	Parsons
84	Steen, Robert	Back	185	Hutchinson
85	Brim, A. M.	End	180	Pittsburg
86	Dellasega, Chas.	Back	170	Frontenac
87	Bottger, Merl	End	190	Manhattan
88	Perdue, Fred	Guard	180	Coffeyville
89	Spigarelli, Deno	Guard	185	Frontenac
90	Morgan, Bill	Back	180	Pittsburg
91	Anderson, Glenn	Back	180	Hutchinson
93	Byerley, Keith	Tackle	190	Minneola
94	Tims, Ed	Guard	200	Pittsburg
95	Mishmash, Harold	Center	190	Pittsburg
96	Steele, Alfred	Tackle	200	Pittsburg
97	Holmes, Vernon	Tackle	195	Blue Mound
99	Gire, Kenneth	Center	210	Pittsburg

E GAME

Pittsburg Gorillas

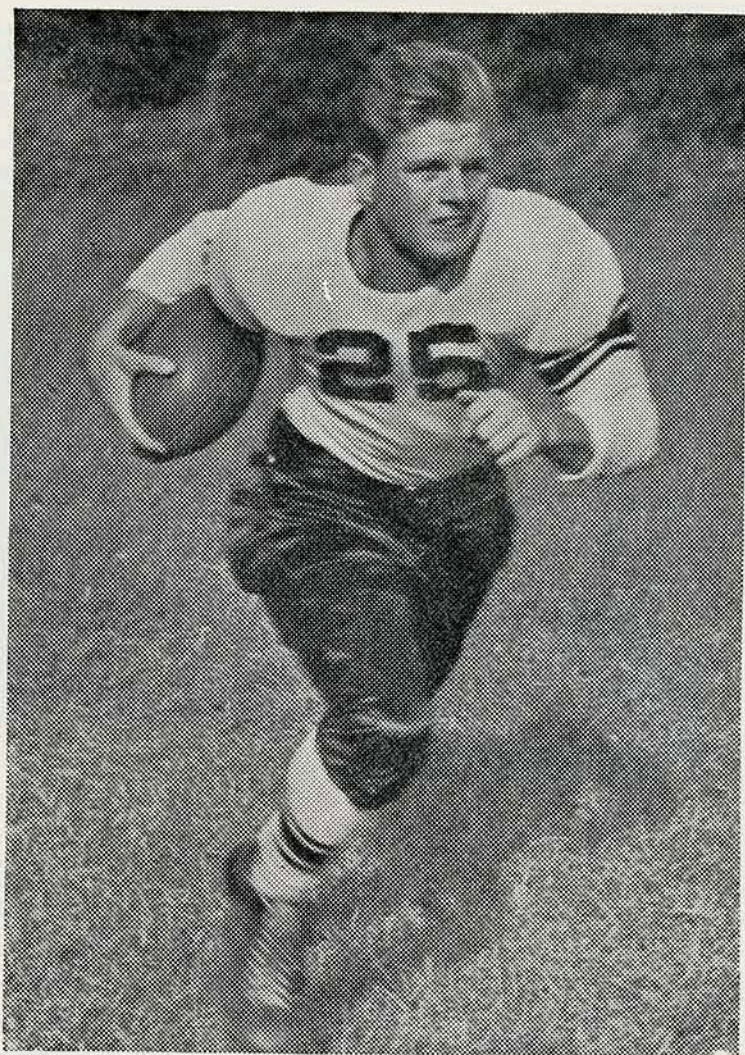
er 8, 2 p. m.

evens lost 28 to 0 in 1922, 33 to 0 in 1923, 30 to 7 in
30 and 7 to 0 in 1939

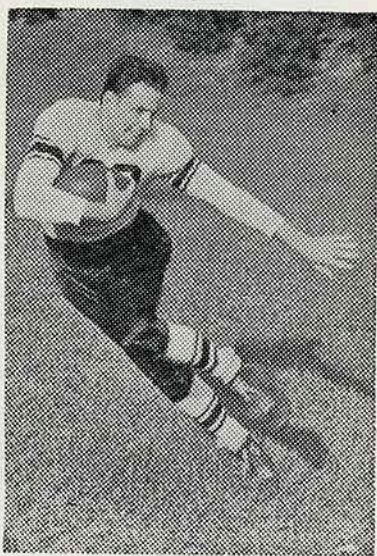
f K. S. T. C. Hats off to a live wire bunch.



IRV COMP, Halfback
198 pounds



DON O'CONNOR, Halfback
168 pounds



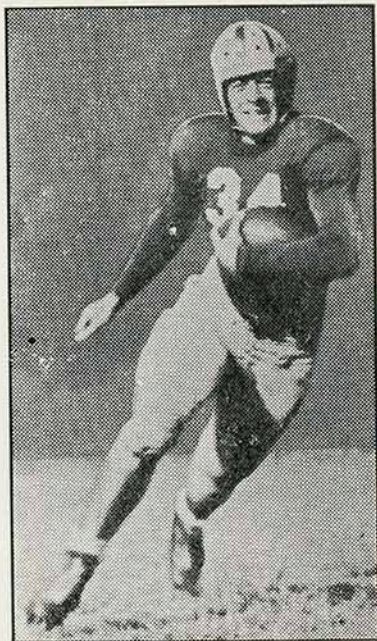
DON McKEEVER, Halfback
165 pounds



GEO. CONKLIN, Tackle
223 pounds

LARRY VISNIC, Guard
181 pounds

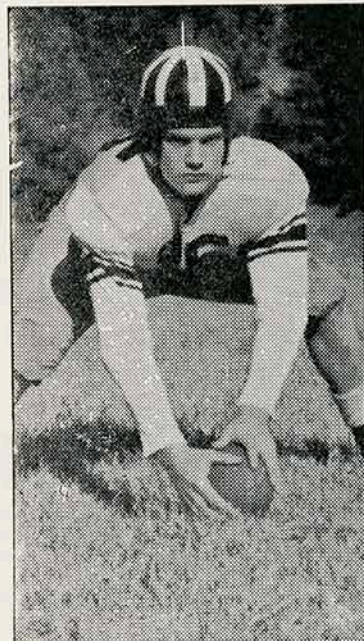
These Ravens Vie With Gorillas Today



ED JARACZEWSKI Halfback
154 pounds



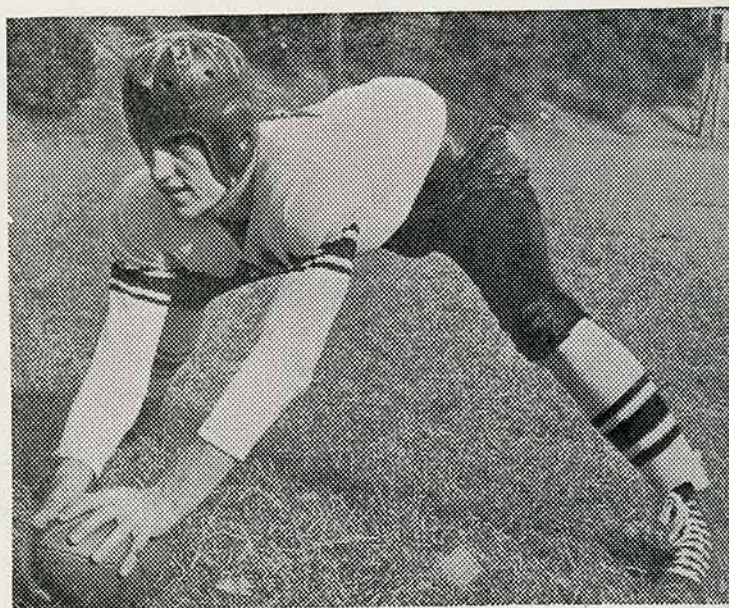
DAVE HART, Halfback
153 pounds



JOE DOCKERY, Center
188 pounds

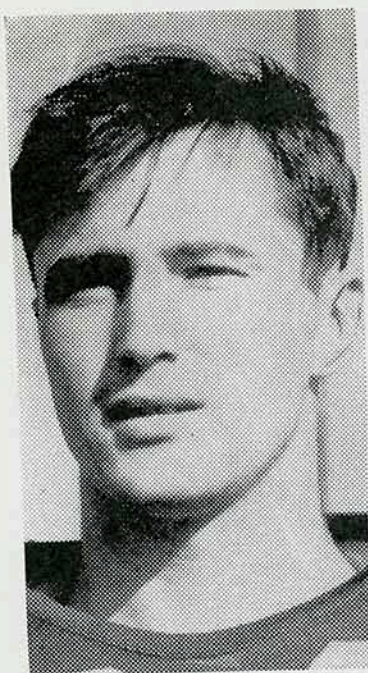


MAX GRAZDA, Tackle
236 pounds

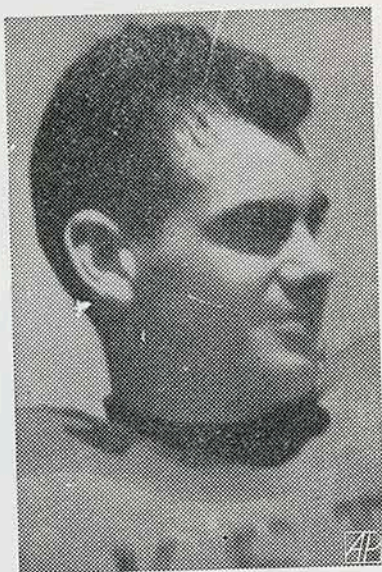


BOB HAYES, Center
200 pounds

Backing The Gorilla Line



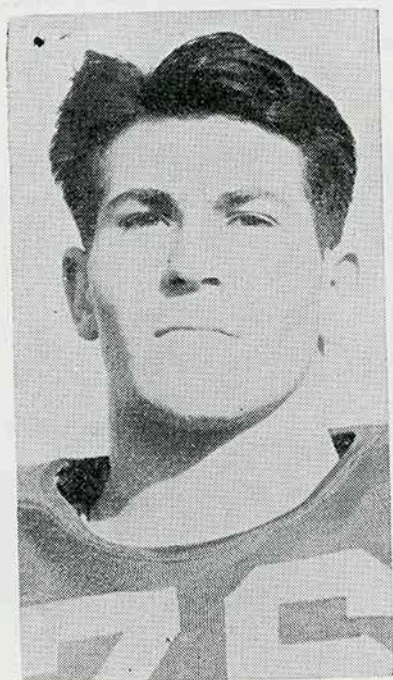
JOE BEGANDO
Back



BILL MORGAN
Back



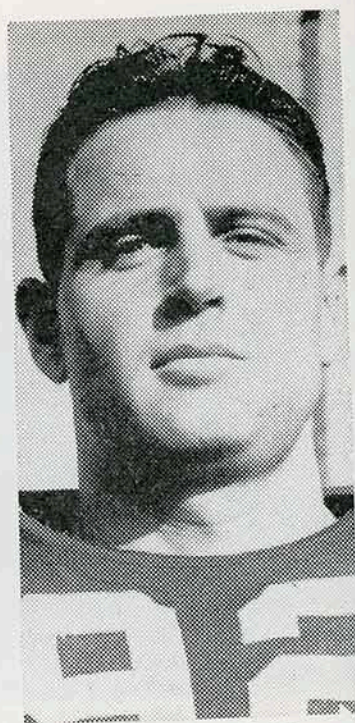
HARRY McDONALD
Back



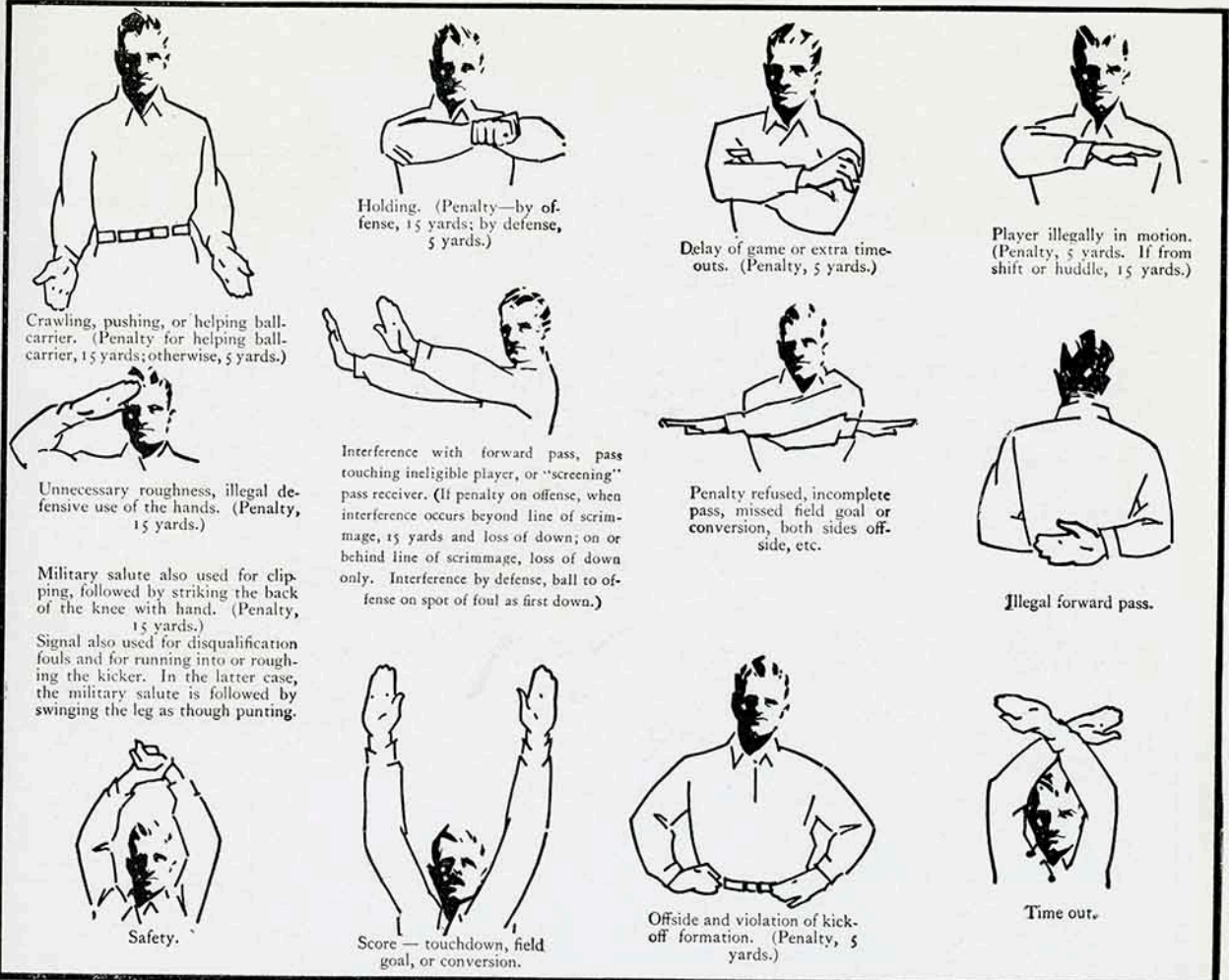
CARL BEARD
Guard



KENNETH GIRE
Center



ROBERT STEEN
Back



INTERPRETATION OF OFFICIALS' SIGNALS

PRINCIPAL PENALTIES

Loss of a Down

Forward pass touched by ineligible player.
 Forward pass from less than 5 yards back or second forward pass during same play.
 Incomplete forward pass.
 Intentionally grounding pass (also 15 yards).
 Interference by passing team with player eligible for catch.

Loss of 5 Yards

Request for time out more than three times during a half.
 Illegal delay of game by either team.
 Failure of substitute to report.
 Violation of kick-off formation.
 Center, guard or tackle may not drop back.
 Player in motion, less than 5 yards back.
 Player out of bounds when scrimmage begins.
 Attempts to draw opponents offside.
 Interference with opponents before ball is put in play.

Player taking more than two steps after fair catch.
 Illegal use of hands and arms by players of defensive team.

Running into the kicker.

Crawling by the runner.

Loss of 15 Yards

Forward pass touched by ineligible player.
 Substitute communicating before ball is put in play.

Failure to come to stop in shift play.

Intentionally grounding pass to save loss of yardage.

Interference by passing team with player eligible for catch.

Interference with opportunity to make fair catch.
 Pass touching or being touched by ineligible player.
 Throwing to ground the player who has made fair catch.

Illegal use of hands and arms by players of offensive team.

Roughing the kicker.

Flagrant roughing of kicker (also disqualification).
 Piling up.

Loss of Half Distance to Goal

Tripping, tackling runner out of bounds, etc.
 Clipping.

Unsportsmanlike conduct.

Striking, kneeling, kicking, etc. (also disqualification).

Foul within 1-yard line.

Foul by defensive team behind its goal line.

Loss of Ball

Second kick out of bounds at kick-off.

Failure to advance ball 10 yards in four downs.

Interference by team which did not make pass.

Free ball kicked or kicked at.

The following Pittsburg business firms have cooperated with the Kansas State Teachers College in advertising this game.

American Service Company	Jim's Bar-B-Que The finest of foods
Arma Elevator Company	Kansas Gas & Electric Co.
Bee Hive Cafe	Kenny Gibson 613 North Broadway
Bumgarner Tire Service	Long-Bell Lumber Co.
Caskey Motor Company	Montgomery Ward and Co.
Coca Cola Bottling Co.	Pepsi-Cola
Dunham Laundry	Dr. W. T. Plumb
Ellsworth Undertaking Co.	Puritan Dairy
Fadler Produce Company	Safety Auto Supply 312 North Broadway
Ferguson Studio	Schnackenberg Dairy
FOX Theatres	E. K. Smith Funeral Home
Gordon Transit Co.	O. L. Stamm, Insurance
Harry's Cafe	Ward-Bobbitt Funeral Home
The Headlight and The Sun	Ernie Williamson Music House
Hull & Dillon Packing Co.	

Patronize These Advertisers