

Pittsburg State University

Pittsburg State University Digital Commons

Student Handbooks, 1926-1966

University Archives

1928

Hand Book 1928-1929

Kansas State Teachers College

Follow this and additional works at: <https://digitalcommons.pittstate.edu/handbooks>

Recommended Citation

Kansas State Teachers College, "Hand Book 1928-1929" (1928). *Student Handbooks, 1926-1966*. 8.
<https://digitalcommons.pittstate.edu/handbooks/8>

This Book is brought to you for free and open access by the University Archives at Pittsburg State University Digital Commons. It has been accepted for inclusion in Student Handbooks, 1926-1966 by an authorized administrator of Pittsburg State University Digital Commons. For more information, please contact digitalcommons@pittstate.edu.

Archives

KD

E 26.8:

St 94/928-29

oil

K

1928-'29

EAT AT THE
BOB-A-DELL INN

"Best for Less"

Fine food, served in an obliging, appetizing manner. Foods that are choice and well cooked in the proper way.

Try the Bob-A-Dell Today

H. R. SELLS

PHONE 1425

See Us for that Corsage

**A NECESSITY FOR
SOCIAL OCCASIONS**

Steinhauser's Flowers

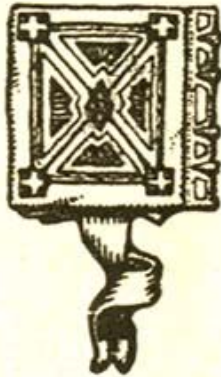
117 West Fifth

Phone 206

KANSAS STATE TEACHERS COLLEGE
of Pittsburg

HAND BOOK

Volume VI



1928-1929

Dedicated to the
Class of 1932

Wm. J. Gier

Published by the College Y. M. C. A.
Leland J. Gier, Business Manager
Printed at K. S. T. C.

When in need of Jewelry
Go to LANYON'S

We Carry a Full Line of
K. S. T. C. Pins and Rings

The
M. S. LANYON JEWELRY CO.
Pittsburg's Leading Jeweler

Campus Barber Shop

We specialize in all the
Latest Styles of Haircutting

SERVICE
is our best advertisement

Paul Jones, Manager

THIS HANDBOOK BELONGS TO

Name *Orrie B. Kellogg*

Pittsburg address *103 E. Cleveland*

Phone number *3480*

Home address *Cherryvale, Ks.*

Classification *Junior*

In case of accident, notify.....

Mrs. O.A. Kellogg

on Mrs. B.G. Middleton same

Address *103 E. Cleveland*

Pittsburg

Kansas

“Welcome to Our City”

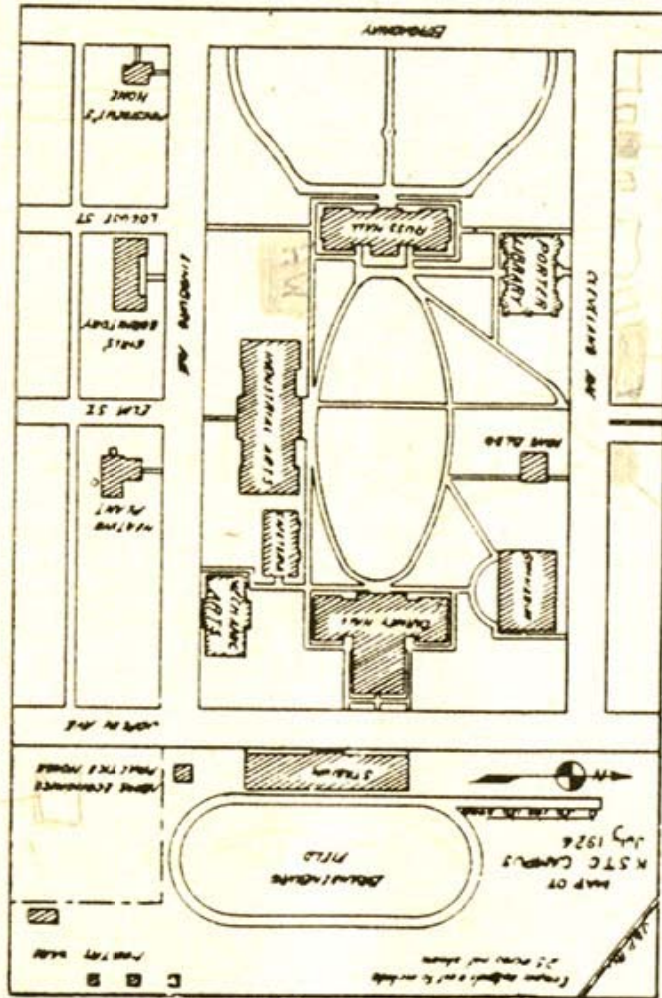
from

Pittsburg's Finest Theaters

The
MIDLAND
and
COLONIAL

Always the Latest
and Best
in Entertainment

Direction of Midland Circuit



KEY TO CAMPUS

The new Music Building is being built just south of Russ Hall. The Horace Mann School, erected by the city of Pittsburg, just off the campus, north of Porter Library, is used by the College for grade teacher training.

Try **THE OASIS** First

Regular Meals.

Short Orders.

Fountain Service.

School Sundries.

Fine Home-Made Candies.

Sheaffer and Parker

Lifetime Fountain Pens.

Come In and Listen to the

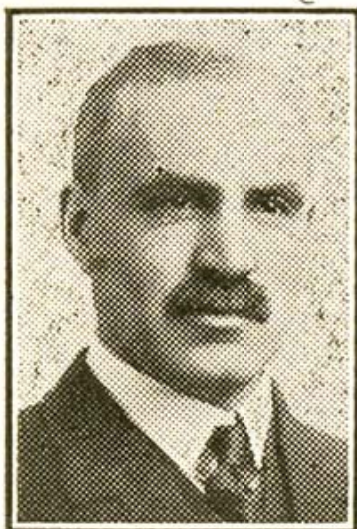
ELECTRAMUSE

THE OASIS

Just off the Campus on Broadway

We serve DeCoursey's Ice Cream
because it is **THE BEST**

PRESIDENT'S GREETING



To the students of Kansas State Teachers College:

The school year just closed has been a splendid one in many respects.

One of the many gratifying things has been the constant increasing attendance, and active participation in student Christian organizations.

A complete educational program demands the development of body, mind, and soul, and he who neglects the spiritual and moral in his education, can have but an incomplete and out-of-balanced education, say the most we may for it. The man or woman who lacks sufficient ambition to develop his mind, body, and soul, sins against himself, and against humanity, and any man who sins against himself and mankind, sins against God.

In behalf of the faculty of the College we bespeak the greatest success in a rounded educational program for the students of K. S. T. C. in 1928-29.

Yours in service,

PRESIDENT W. A. BRANDENBURG.

Visit the **Ferguson Studio**
for your
Kanza and Application
Photos

Satisfaction Guaranteed
Better Kodak Finishing

Ferguson's Studio

523½ N. Broadway
"Photographs live forever"

Two Good Places
to
EAT

OTTO'S CAFETERIA
and
BEE HIVE CAFE

514 N. Bdwy

GREETINGS

In behalf of the College which I have the honor to represent, I wish to extend to you a most cordial welcome to all of the advantages and privileges which this institution can offer to you during your college course. If you are entering for the first time and you feel somewhat lonely and discouraged, we shall be glad to have you call at our office and let us help you. If you have been on this campus before, you know the democratic spirit which characterizes faculty and student body. We want it to become even more intimate if possible, that we may be of greater service to each other. I need not extend any special greetings to you, but we want you to know that we are ever interested in your welfare.

Sincerely yours,

G. W. TROUT,

Dean of the College.

SAVE
with
SAFETY

at

THE
ASH DRUG STORE

605 North Broadway

Phone 36

Free Delivery

GREETINGS FROM DEAN MITCHELL

To know "who," "when," "where," "which way," etc., means so much to a student. To meet this service this little K book comes to you with compliments of the Y. W. and Y. M.

While I'm writing this line, my thoughts wander from the page to you who will read these words.

If I knew how to say "Welcome" to you, "Feel free to drop in at Room 203, Russ Hall, any time," I'd be glad. Even more than Room 203, Russ Hall. If some time when college doors are closed, you feel we could help you, don't hesitate to call us at 1555. The fellowship of such service means so much to us at K. S. T. C.

Yours cordially,

HATTIE MOORE MITCHELL,

Dean of Women.

Campus Grocery and Market

Service and Quality
1610 S. Broadway Phone 3562

EVENTUALLY—

Why not now?

SCHOOL SUPPLIES

Your business is appreciated

The Collegiate

L. P. Wilcox, Prop. Phone 407

College Shoe Shop

We Call For and Deliver

1603½ S. Broadway Phone 147
W. R. Livingston, Prop.

GREETINGS

To the men of K. S. T. C. I extend greetings.

You are welcome to K. S. T. C. campus, to a share in its pleasures, its spirit of service and loyalty; best of all, you are welcome to the great opportunity it affords you for intellectual training and self-development. That is the fundamental purpose of the institution; toward that end its real energies are directed and its resources are expanded. If it fails in this, it fails in the object for which our K. S. T. C. was created and is maintained.

College represents opportunity. Getting and giving an education is a co-operative affair. Seize this opportunity and you can make of yourself an individual of intellectual power; neglect it and college can do nothing for you.

I sincerely hope that every man enrolled in the College has come with an earnest purpose; furthermore, I hope he can work hard and play hard, and find pleasure in both without being deflected from that purpose. The College wants to help him realize every worthy ambition, and it will gladly do its full share toward that end, on condition that he will do his.

Sincerely yours,

L. M. COLLINS,

Dean of Men.

When Shoe Shop

Leaders in Shoe Repairing

516½ N. Broadway Phone 308
We Call For and Deliver Free

Campus Cleaners

At Your Door

PHONES 123 AND 124

DR. A. O. CROWDER

DENTAL SURGEON

608½ North Broadway

Choice Groceries—Fresh Meats

Fred W. Baker

1318 S. Broadway Phone 361

HERBERT GRAY'S ADVICE TO FRESHMEN

1. Defend your conscience against the fashions around you. Refuse to do things simply because others do them. Develop your resistance power and you develop character.

2. Keep your temper in hand. Without tempers few people would amount to much, but none make a success of living until they have subdued them.

3. Teach your body to obey your decisions. Appetites and passions are a part of our natural endowment, but they become a curse once out of hand.

4. Learn to accommodate yourself to other people. Real life is a life in society. Knowing how to get along with folks is something to be learned in early years.

5. Use your spiritual powers unceasingly. Spiritual difference that has lasted until middle life dulls the soul. "Remember now thy Creator in the days of thy youth."

WELCOME TO K. S. T. C.

It will not be necessary to welcome those who have had the privilege of being members of a Hi-Y association to attend the Y. M. C. A. meetings. You know what type of work the Young Men's Christian Association does. You are requested to continue your work at this task.

We especially welcome those who have not had the opportunity, while in high school, of joining the Hi-Y. Graduates count as one of the greatest values of their college education the friendships made through association with men with whom they have become acquainted largely through the contacts made in the Y. M. C. A. We urge you to take advantage of this opportunity.

We welcome you into the association and hope you will co-operate with us, that this year may stand out as a milestone in the progress of the student movement.

Regular meetings are held each Tuesday at 10:10 in Room 210, R. II.

CHARLES YOOS,
President, College "Y."

THE Y. M. C. A. PROGRAM

1. To create and strengthen faith of students in God, through Jesus Christ.
2. To aid men in adapting themselves to college life.
3. To cultivate and develop talent among college men.
4. To stimulate thinking, among students, on world problems.

Y. M. C. A. Officers for 1928-29

Charles YoosPresident
Samuel WebbVice-President
Ralph FergusonSecretary
Archibald RusselTreasurer
Sponsors: Professors Pease, Euler, Collins,
Lance, and Straley.

Membership in the "Y" is entirely free and every man on the campus is invited to join. The activities of the Y. M. C. A. of K. S. T. C. are:

1. Religious Education. The Y. M. C. A. believes that no man can afford to neglect to develop himself spiritually and endeavors to promote serious thinking on the big questions of religion through forums, Bible study groups, and the regular Tuesday morning meetings.

2. Social Service. Throughout the year groups will be organized to promote various kinds of community programs, such as directing Boy Scout troops, teaching Sunday School classes, coaching basketball and baseball, leading song service, and working with gospel teams.

3. Campus Service. Under this head can be included the Y. M. C. A. employment bureau, the freshman program, sick visitation, vocational conferences with business men, social events such as the "Y" Stag and the Y. M.—Y. W. Mixers, and the preparation of this handbook. Mr. Small, the general secretary, is always ready to advise with any man who feels the need of a conference with someone who knows and can help solve a college man's problems.

YOU'RE WELCOME

You're welcome, freshmen, or merely entering here for the first time. We want you to feel at home. This is your college, and the activities are for you.

Speaking for the Y. W. C. A., I want to invite you, personally, to find with us a broader, fuller, richer life. Let us solve our problems, find our needs, and grow in spiritual vitality together. If you are a freshman you have probably come from a Girl Reserve club. Don't feel that your work in it has stopped, but merely continue it in our organization.

What are any of us doing but learning to live? What do any of us want but to make the most of life? How are any of us going to do it alone?

We need you, and you need us.

Your friend,

DOROTHY WOLFE,

President, Y. W. C. A.

COLLEGE Y. W. C. A.

Dorothy Wolfe	President
Clara Marsh	Vice-President
Velma Totten	Secretary
Helen Ireland	Treasurer
Jennie C. Walker.....	General Secretary

Cabinet members: Ruth Shriver, Pauline Roark, Laura Smith, Mary Oskvorak, Margaret Scovell, Daisy Trice, Nora Nolan, Aldean Beatty, and Nina Thomas.

Advisory Committee: Miss Haughawout, Miss Cave, Dean Mitchell, Miss McKee, Miss McPherson, Mrs. Grubbs and Mrs. Brandenburg.

At the beginning of this new year the Young Women's Christian Association, its secretary, its cabinet, and all its members greet you—you who are back again after summer vacations, and you who are new on the campus. We are glad you are here and we want you to tell us if we can help you in any way.

As an association, we are a group of girls who are eager to grow, through fellowship and study together, into a richer and broader life. We desire so to unite in purpose the students of our campus that we may be a part of the great group of college women everywhere who are working toward world fellowship and international peace. We hope you will choose to join us in our search for the realization of high ideals of living, as we strive to measure our lives by the national objective: "We unite in a determination to live unreservedly Jesus' law of love and so to know God."

We invite you to enter into all our activities, and to attend our teas, hikes, and other social meetings as well as our study and devotional hours. Every Tuesday morning at 10:10 we hold our weekly fellowship hour. There will be Bible study groups and inter-racial groups organized to meet your convenience. All those who are here for the first time are urged to join the Freshmen Commission, an organization of freshmen girls, who meet separately, but are also a part of the larger Y. W. C. A.

The Y. W. C. A. rest room is on the third floor of Russ Hall, room 314. Come in and use it; it is here for you. In the office adjoining the rest room you will find the Y. W. C. A. secretary, who is anxious to know you personally. Come in and meet her.

NEWMAN CLUB

The Newman Club of K. S. T. C. is an organization of Catholic men and women, affiliated with the national organization, which has representative chapters in all of the leading state universities and colleges throughout the land. Our aim is to broaden the social and scholastic life of college students and to promote a feeling of fellowship among all.

Meetings are held each Tuesday morning at 10:10, in room 112, Carney Hall. A cordial welcome is extended to all.

LESTER GREVE,

President.

SCHOOL ASSEMBLIES

College Assembly is held in the auditorium every Thursday at 10:10. There is always special music, brief devotional exercises, and some program of interest. This is the one time of the week when the student body gets together for announcements, etc., and the student who cares to keep in touch with what is going on on the campus cannot afford to miss it. Special pep meetings or assemblies to hear noted speakers are called from time to time as occasion demands.

WORKING YOUR WAY

Many of the students at K. S. T. C. earn all or part of their college expenses by working at part-time jobs. The Y. M. C. A., through its secretary, Mr. George Small, maintains an employment bureau for men and there is also a faculty committee for this purpose headed by Professor Dickinson of the Industrial Arts Department. Employment service for women is carried on through the office of the Dean of Women.

PITTSBURG CHURCH DIRECTORY

First Baptist Church—Seventh and Walnut, Rev. C. J. Askins, pastor. Sunday school 9:30 a. m., mixed college class—Mr. George Small. Preaching services 11 a. m., 8 p. m. B. Y. P. U., 7 p. m.

Mt. Hebron Baptist—310 E. Tenth, Rev. J. T. Elias. Church school 9:30 a. m. B. Y. P. U. 6:45 p. m.

New Hope Baptist—215 W. Eleventh, Samuel Cooper, pastor. Sunday school 9:30 a. m. Church services 11 a. m., 8 p. m. B. Y. P. U. 6:30 p. m.

St. Mary's Catholic—201 E. Ninth. Dr. McCullough.

Church of Christ—1605 N. Grand. Sunday school 10 a. m. Preaching 11 a. m. and 8 p. m.

X **First Christian Church**—Fifth and Pine. Rev. F. L. Pettit. Sunday school 9:30 a. m., mixed college class—Dean Hattie Moore Mitchell. Church services 11 a. m., 8 p. m. Christian Endeavor 7 p. m.

First Church of Christ, Scientist—Sunday school 9:30 a. m. Sunday service 11 a. m. Testimonial service 8 p. m.

St. Peter's Episcopal—306 W. Euclid. Church school 9:45 a. m., mixed college class—Rev. Hendry. Young people's meeting 7 p. m. Church services 11 a. m. and 8 p. m.

St. John's Lutheran—Third and Walnut. Rev. P. Schmidt. Sunday school 9:45 a. m. Lutheran league 7:30 p. m. German services 10 a. m. English services 11 a. m.

First Methodist—Fifth and Pine. Rev. Wm. McCormack. Sunday school 9:30 a. m. College class, Dr. C. B. Pyle. Epworth League 6:45 p. m. Church Services 11 a. m., 8 p. m.

Bethel A. M. E.—409 W. Eighth. Rev. Jackson.

First Presbyterian—Sixth and Pine. Rev. C. J. Armentrout. Sunday school 9:30 a. m. College classes, Mrs. Bruce Cameron, Prof. J. A. G. Shirk. Christian Endeavor 7 p. m. Preaching services 11 a. m., 8 p. m.

United Presbyterian—Fourth and Walnut Rev. J. Harper Hutchman. Sunday school 9:30 a. m. Christian Endeavor 7 p. m. Preaching services 11 a. m., 8 p. m.

First United Brethren—405 S. Locust. Rev. Slotterback. Sunday school 9:45 a. m. Christian Endeavor 6:45 p. m. Preaching services 11 a. m., 8 p. m.

Church of the Nazarene—904 E. Fourth. Rev. Ira E. Stevens. Sunday school 9:45 a. m. Young people's meeting 7 p. m. Preaching 11 a. m., 8 p. m.

Mt. Zion Lutheran—912 E. Washington. Rev. Otto Matchuska. Pentacost school Bible class 10 a. m. German services 10:30 a. m. Night service 7:45 p. m.

Salvation Army—Citadel 213 E. Fourth. Captain G. L. Clapp.

CAMPUS ORGANIZATIONS

Social Sororities

ΑΣΑ

Alpha Sigma Alpha, Eta Eta Chapter (National Educational Sorority)—Mildred Large, president; Dorothy Weede, vice-president; Eulalia Roseberry and Jane Carroll, sponsors. 1210 S. Broadway. Phone 3528.

ΔΣΕ

Delta Sigma Epsilon, Theta Chapter (National Pedagogical Sorority)—Josephine Grandle, president; Beatrice Millner, vice-president; Thelma Carnagey, sponsor. 1807 S. Locust. Phone 3416.

ΘΣΥ

Theta Sigma Upsilon, Eta Chapter (National Pedagogical Sorority)—Maurine Scovell, president; Gladys Pinder, vice-president; Elmina Graham, sponsor. 1604 S. Broadway. Phone 3408.

ΠΔΘ

Pi Delta Theta, Gamma Chapter (National Educational Sorority)—Bess Shanks, president; Clastine Allen, vice-president; Lula McPherson, sponsor.

ΣΣΣ

Sigma Sigma Sigma, Chi Chapter (National Educational Sorority)—Lora Lee York, president; Sibyl Gray, vice-president; Lula Smith, sponsor. 1714 S. Broadway. Phone 3407.

ΩΕΣ

Omega Epsilon Sigma, Gamma Chapter (National Educational Sorority)—Myrtle Gregg, president; Winnifred Huffman, vice-president; Edytha Trickett, sponsor.

ΠΚΣ

Social Fraternities

ΚΔΚ

Kappa Delta Kappa (Local Fraternity)—John K. Thompson, president; Kenneth Clark, vice-president; C. H. McDonald and L. L. Rabie, sponsors. 1718 S. Broadway. Phone 2136W.

ΦΣΕ

Phi Sigma Epsilon, Beta Chapter (National Social Fraternity)—William Brandenburg, Jr., president; Dan Scott, vice-president; L. M. Collins, sponsor. 1801 S. Broadway. Phone 812.

ΣΜΔ

Sigma Mu Delta, Alpha Chapter (National Fraternity of Masons and De Molays)—Lorin Bock, president; Herbert Wise, vice-president; F. H. Dickinson and E. W. Baxter, sponsors. 201 E. Williams. Phone 500.

ΣΤΤ

Sigma Tau Gamma, Epsilon Chapter (National Social Fraternity)—Roger Smith, president; Kay Goforth, vice-president; O. E. Michie, O. F. Grubbs, and R. M. Coffelt, sponsors.

Professional and Honorary Fraternities

ΑΤΤ

Alpha Gamma Tau, Alpha Chapter (Professional Scientific Fraternity)—Lester Greves, president; Elmer Shearer, vice-president; J. A. Yates, G. E. Abernathy, and W. H. Matthews, sponsors.

Theta Alpha Phi, Alpha Chapter (National Dramatic Arts Fraternity)—Paul Ham, president; Betty Corby, vice-president; J. R. Pelsma, sponsor.

ΘΑΦ

Kappa Delta Pi (National Scholastic Fraternity)—Merle Farnsworth, president; Edith Thomas, vice-president; W. A. Brandenburg, sponsor.

ΚΔΠ

Lambda Sigma Kappa (Local Pre-medical Fraternity)—William Baker, president; Glenn Hopkins, vice-president; J. R. Wells and C. Leist, sponsors.

ΛΣΚ

Lambda Phi Delta, Beta Chapter (National Fraternity of Fine Arts)—Lucy Osborn, president; Helen Messenger, vice-president; Eva McKee, sponsor.

ΛΦΔ

Xi Phi, Beta Chapter (Honorary Leadership Fraternity)—Mac Allen, president; Jane Carroll and S. L. Householder, sponsors.

ΞΦ

Pi Gamma Mu (National Social Science Fraternity)—Hobart Sallee, president; Albert Ratzlaff, vice-president; faculty members of the history department, sponsors.

ΠΓΜ

Pi Kappa Delta, Theta Chapter (National Forensic Fraternity)—Tom Elliot, president; Charles Yoos, vice-president; J. R. Pelsma, sponsor.

ΠΚΔ

Sigma Tau Delta, Sigma Alpha Chapter (National Professional English Fraternity)—Elsie Mitchell, president; Adele Burnett and Elmina Graham, sponsors.

ΣΤΔ

Sigma Phi Mu (Local Psychology Fraternity)—Flora E. Holroyd, president; Bill Williams, vice-president; C. B. Pyle, sponsor.

ΣΦΜ

Pi Kappa Sigma, Alpha Beta Chapter (National Commercial Sorority)—Margaret Waring, president; Edytha Trickett, sponsor.

ΠΚΣ

Phi Sigma Pi, Delta Chapter (National Honorary Scholastic Industrial Arts Fraternity)—Cecil Pinder, president; A. H. Whitesitt, sponsor.

ΦΣΠ

Phi Upsilon Omicron, Alpha Chapter (National Professional Home Economics Fraternity)—Mabel Beebe, president; Zoe Wolcott, sponsor.

ΦΥΟ

Departmental and Other Organizations

Arden Players—J. R. Pelsma, sponsor.

Biology Club—J. R. Wells, sponsor.

Band—Carl Carter, sponsor.

Charles Eliot Education Club—Chris Reynolds, president.

College Art Club—Elsie L. Bowman and Bertha Spencer, sponsors.

Commerce Club—W. S. Lyerla, sponsor.

English Club—Margaret Lill, president.

Gorillas—Kenneth Clark, president.

Rob. Thomas
Pres.

Home Economics Club—Dorothy Nichols, president.
Industrial Arts Society—Leon Beaver, president.
Kampus Kats—Hazel Horton, president.
Mathematics Club—George Kelley, president.
Men's Glee Club—Otto Booker, sponsor.
Messiah Chorus—Walter McCray, sponsor.
Orchestra—Walter McCray, sponsor.
Panhellenic Council—Prudence Scovell, president.
Polymnia Club—Gabriella Campbell, sponsor.
Primary Training League—Jane Carroll, president.
Red Cross Life Saving Corps—Ruby Van Winkle,
president.
Shakespeare Club—M. Haughawout, sponsor.
Spanish Club—Doris Lutes, president.
Women's Athletic Association—Daisy Bible, presi-
dent.

ATHLETICS

Dr. Garfield Weede, known to all his friends as "Doc," has directed K. S. T. C.'s athletic and physical education program for nine years, and during this time the College has become a consistent winner in all major sports and is now recognized as one of the strongest schools in the state.

During the past six years "Jawn" Lance has gained recognition as one of the outstanding coaches of basketball in the country. For four years we have won or tied for the state championship, and it is generally admitted that Kansas colleges play a superior grade of basketball. John is a former K. S. T. C. athlete and track star and is an associate coach in football and track.

George Walker came here from the University of Illinois Coaching School three years ago as coach of wrestling, swimming and life saving and of the football and basketball reserves and associate coach of track and field events.

Football

With 15 lettermen returning, we have fair prospects for the football season. Eight games have been scheduled, four of which are at home.

Kenneth Pettit, captain for the coming year, has played three years with the Weedemen and should be a very capable leader. Other lettermen are: Anderson, Adams, Baird, Baker, Bournonville, Brock, Fry, Green, Nicholson, Ogden, Pittinger, Pruett, White, and Whitten. There will also be several reserves out to try for a place on the "Varsity squad."

1928 Schedule

- Sept. 22—"Old Grads," here.
Sept. 29—N. E. Oklahoma Teachers, at Tahlequah.
Oct. 6—Wichita, here.
Oct. 13—Open.
Oct. 20—Washburn, at Topeka.
Oct. 27—Open.
Nov. 3—College of Emporia, here.
Nov. 10—Emporia Teachers, at Emporia.
Nov. 23—Hays Teachers, here.
Nov. 29—Southwestern, at Winfield.

Wrestling

Wrestling has been recognized here as a major sport for only three years, and during those three years we have won two state championships. Six members of last year's team are back—Ballard, Curran, Garvin, Madison, Pumpelly, and Wise.

Basketball

The Gorillas have finished at the top of the conference for the past four years. Two of last year's team graduated, but six are returning. They are: Anderson, Benson, Breithaupt, Goforth, Johnson, and Scott.

Track

Prospects for another championship track team for 1929 are fair. Five of last season's champions graduated, and Ralph Titus, who served as captain for the second year, was among the lot. Lettermen who are expected to return are: Benson, Cullison, Green, Keithley, Lafferty, Poncha, Shaw, Snodgrass, Travis, Waner, Winchester, and White.

Women's Athletic Association 28-29

The purpose of this organization is to promote high physical efficiency among the women of the college; to foster college spirit by developing inter-class athletics; to provide recognition for athletic ability; and to promote good citizenship.

The first award of the association is the W. A. A. insignia, which is given for the one hundred points earned for membership. Following this the girls receive chevrons for each of the sports teams on which they earn places. The next award, the "K," is given for seven hundred points earned, under the W. A. A. point system. Girls who make twelve hundred points are awarded medals. The point system is divided into three sections: health, general sports, and athletics.

Officers for the coming year will be elected early in the fall. Daisy Bible is the retiring president, and Miss Hazel Cave of the physical education faculty is sponsor.

K. S. T. C. Track and Field Records

100-Yard Dash—McGinnis, 1914, Hooper ('23), Shaw ('27), 10 sec.

220-Yard Dash—Shapcott, 1925, 21.8 sec.

440-Yard Dash—McEnterfer, 1928, 49.8 sec.

Half Mile—Snodgrass, 1925, 1 min. 57.5 sec.

Mile Run—Nicholson, 1927, 4 min. 27 sec.

Two-Mile Run—Nicholson, 1925, Axtell ('26), 9 min. 58 sec.

120-Yard High Hurdles—Alyea, 1921, 15.6 sec.

220-Yard Low Hurdles—Titus, 1928, 24.5 sec.

Mile Relay—Keithley, McEnterfer, Snodgrass, Titus, 1928, 3 min. 20.2 sec.

Pole Vault—Butterfield, 1926, 12 ft. 5½ in.

High Jump—Fowler, 1925, 6 ft. 2 in.

Broad Jump—Titus, 1928, 23 ft. ½ in.

12-Pound Shot—White, 1926, 51 ft. 10 in.

16-Pound Shot—White, 1928, 48 ft. 9 in.

Discus—Purma, 1925, 130 ft. 11½ in.

Javelin—Travis, 1926, 198 ft. 8 in.

P. & G. BAKERY

Fountain Service

612 South Broadway

For all kinds of Portraits, and especially
Application Photos, go to

REMBRANDT STUDIO

(Above Newman's)

Phone 723

H. W. Hyink, Prop.

PUBLICATIONS

Publication Board. The college annual and newspaper are published under the supervision of a board of publications which hires the major staff members and decides upon the business policies of the two publications. This board, which was created two years ago by the Student Council, is composed of four students and three faculty members. More detailed information may be had by consulting Student Council By-Law XIX, which is printed elsewhere in this book.

The Kanza. The annual is one of the most important activities of any college because it is a permanent and authentic record of the events of the school year. Every student should contribute to the support of the book by buying a copy and by having his picture taken as quickly as possible.

Conrad Lange is business manager of the Kanza for 1929, and Earl Farnsworth is serving his second term as editor.

The Collegio. The Collegio is the official school paper. Ray Heady is editor, and Alfred Gutteridge is business manager. Copy for the paper is prepared by the journalism classes, and the printing is done in the school shop. Your activity fee pays your subscription, and your copy will be waiting for you in front of the Industrial Arts building every Friday noon.

DO'S

Attend the Y. W. C. A. "Jolly Up" and the Y. M. C. A. "Stagg." They are held the first week of school. The "Mixer" will be about two weeks off. They are open to all students.

Forget that you came from any high school. Discard high school letters and ways. You belong to K. S. T. C. of Pittsburg now.

Attend all athletic contests. Activity ticket admits.

Join the Gorillas or Kampus Kats.

Help to promote the democratic spirit for which K. S. T. C. is noted.

Cultivate the habit of remembering names and applying them to the right people.

Get acquainted with your instructors. They are your best friends.

Buy a Kanza.

Don't skip chapel.

Read the bulletin boards.

Join the Y. M. C. A. or Y. W. C. A. Membership is free.

Attend the meetings of Y. M., Y. W., or Newman Club Tuesday, 10:10 a. m.

STUDENT COUNCIL

The Student Council of K. S. T. C. of Pittsburg is the student governing body. The president is elected at an annual spring election by the student body as a whole, and two representatives from each class are chosen at the regular elections in the fall. The members serve for a full school year.

The Student Council was organized in 1919 because of the increasing need of such a group. Any problems which concern the students as a whole are dealt with by the council, and it is now responsible for a number of school activities, such as Commemoration Day, Hobo Day, Stunt Fest, school picnics, freshman rules, class organizations, and the honor point system. Clara Marsh is president.

CONSTITUTION OF THE STUDENT COUNCIL OF K. S. T. C.

Article I.

The name of this organization shall be the Student Council of K. S. T. C.

Article II.

The purpose of this organization is to make provisions whereby each school year there will be chosen from the various college classes a group (as hereinafter provided) of students who will be responsible for promoting every student activity of K. S. T. C. in the proper spirit and best interests of the institution.

Article III.

Section 1. The Student Council shall consist of nine members: a president chosen at large by ballot from the student body; and two representatives of the opposite sex from each class.

Sec. 2. The Secretary and Treasurer and such other officers as may be determined upon, shall be chosen by the Council from its own membership.

Article IV

The election of the President shall take place the first Thursday in May, and the remaining members shall be elected the third Thursday following the opening of school in the Fall. Provided further: that for purposes of organization this year (1919), all members of the Council shall be elected at such time as may be designated by the committee framing this constitution.

Article V

Section 1. The Council shall constitute a body to determine upon any, or all policies, affecting the best interests of the student body which may

come up during the school year. provided there is already in existence no other organization in school to which the settlement of the same by reason of its origin or nature should be referred (Y. M. C. A., Y. W. C. A., Athletic Council, etc.); and which, from time to time—as may be warranted by changing conditions—shall initiate such new policies or measure as it sees fit.

Sec. 2. In no case shall any action be taken which is contradictory to the established policies of the institution, unless such action is agreed upon in conference with a faculty committee.

Sec. 3. No business shall be legally transacted unless each of the classes is represented. Provided further: should any class refuse representation at any two consecutive meetings, the Council may legally transact any business at the third meeting in the absence of the representatives of said class.

Sec. 4. No action of the Council shall be considered legal if passed in the absence of more than two members.

Sec. 5. There shall be one regular meeting of the Student Council every two weeks of the school year, excepting summer school; and as many special meetings as the President of the Council may see fit to call.

Sec. 6. All rulings of the Council shall take effect at such time as may be designated by the Council.

Article VI

Section 1. Any eligible person wishing to become president of the Council must file a petition to that effect with the Secretary of the Student Council one week before election; and said petition must be signed by at least twenty-five (25) College students; provided further, that for purposes of organization this year (1919), such petitions shall be filed with the committee framing this constitution.

Sec. 2 All students in order to be eligible to vote must register, stating class to which they belong, at such time and place as may be designated by the Council.

Sec. 3. Registration must close at least thirty-six (36) hours prior to opening of the polls for the primary election.

Sec. 4. A primary election shall be held under the jurisdiction of an election board designated by the Student Council on Tuesday before election day from 9 a. m. to 5 p. m. in such room or rooms as may be designated by the Student Council; and which room or rooms shall be supplied with the necessary booths, ballot boxes, etc.

Sec. 5. The two persons receiving the highest number of votes at the primary shall be considered nominees for the election.

Sec. 6. Ballots for the primary and the election shall be printed, or typewritten, and all voting shall be done in secret.

Sec. 7. For election day all regulations used for the primary shall be followed except that the candidate receiving the highest number of votes shall be declared president.

Sec. 8. In any case of a tie vote, the Council shall be the deciding factor, and in all other matters in any way pertaining to the election of a president not herein provided for, the Council shall be supreme.

Article VII

This constitution may be amended by a two-thirds vote of the Council in regular session; and all such amendments must be referred to each of the four classes. Said amendments shall take effect and be in force as soon as three-fourths of the classes have ratified them.

BY-LAWS OF THE STUDENT COUNCIL AT K. S. T. C., PITTSBURG

BY-LAW I

Section 1. Any eligible person wishing to become an officer (president, vice-president, secretary, treasurer, Student Council member) of either of the four (4) classes of the college must file a petition to that effect with the President of the Student Council the Friday preceding the general election, which shall be held the third Thursday of the school year, and said petition must be signed by at least ten (10) members of the class of which he desires to become an officer and must state which office he desires.

Sec. 2. All students in order to vote must register, stating class to which they belong, at such time and place as may be designated by the president of the Student Council.

Sec. 3. Registration must close at least twenty-four hours prior to the opening of the polls for the primary election.

Sec. 4. A primary election shall be held under the jurisdiction of an election board designated by the President of the Student Council, on Tuesday before election day, from 9 A. M. to 5 P. M. in such room or rooms as shall be designated by the President

Sec. 5. The two (2) persons receiving the highest number of votes for each office at the primary shall be considered the nominees for the election.

Sec. 6. Ballots for the primary must be printed or typewritten and all balloting must be done in secret.

Sec. 7. For election day all regulations used for the primary shall be followed, except that the candidate for each office of each class receiving the highest number of votes shall be declared elected.

Sec. 8. In case of a tie vote another election for that office shall be held within one week.

Sec. 9. In case there is no election for an office, the Student Council as then formed shall have the power of appointing.

BY-LAW II

(Repealed by By-law XIX.)

BY-LAW III

Sec. 1. Each student shall be allowed to hold school offices for which the points allotted shall not exceed ten (10).

Sec. 2. The following shall be the number of points allotted to the different offices:

President of the Student Council.....	10
Editor of the Collegio.....	10
Business Manager of the Collegio.....	10
Editor of the Kanza.....	10
Business Manager of the Kanza.....	10
President of the Y. M. C. A.....	10
President of the Y. W. C. A.....	10
President of the College Classes.....	7
President of the Gorillas.....	7
President of the Kampus Kats.....	7
President of the W. A. A.....	7
President of the Newman Club.....	7
President of Sororities and Fraternities.....	7
President of Vocational Club.....	7
Head Cheer Leader.....	7
President of all organizations not listed.....	5
Members of the Student Council.....	5
Assistant Cheer Leaders.....	5
Captain of Varsity Football Team.....	5
Captain of Varsity Track Team.....	5
Captain of Varsity Basketball Team.....	5
Kanza Staff Members.....	2½
Vice-presidents of all organizations except Student Council.....	2½
Secretaries of all organizations except Student Council.....	2½
Treasurers of all organizations except Student Council.....	2½
Secretary-Treasurer of any organization.....	4
Members of the Athletic Council.....	2½

Members of Y. M.-Y. W. cabinets.....	2 1/2
Business manager of all organizations not listed	3
Members of Board of Publications.....	3

Sec. 3. Every student must register, as soon as elected, the offices that he holds, with the secretary of the Student Council, and in case a student is elected to several offices for which the points shall exceed ten (10), he shall be allowed three days after notification by the Student Council to choose from which office he shall withdraw and shall notify the secretary of the Student Council of his decision. In case no resignation is received from such student, the Student Council shall decide which offices he shall retain.

Sec. 4. In case of new offices being originated or of dispute arising over the number of points to be allotted an office, the Student Council shall decide such questions by a majority vote.

Sec. 5. The provision of this by-law shall take effect at the opening of school in September, 1923.

BY-LAW IV

Article 1. The officers of classes shall be as follows: Each class shall have one president, one vice-president, one secretary-treasurer, one woman representative to the Student Council, and one man representative to the Student Council.

This by-law will become effective upon passage.

BY-LAW V

Article 1. If for any reason any class officer has to give up his office before the expiration of his term of office his successor shall be chosen at a meeting duly called by the president of his class. Two-thirds of the class membership must be present at this meeting. The class shall elect by vote in any manner it sees fit a person whom it wishes to recommend to the Student Council for appointment to the vacancy. The Student Council will then determine the eligibility of the person so recommended. If the council finds that the person is eligible it will then officially declare said person elected to the office.

This by-law will become effective upon passage.

BY-LAW VI

Any member of the Student Council who absents himself without authority from the President of the Student Council to do so, from three regular meetings of the Student Council shall forfeit his membership in the Student Council. The class whom the expelled member represented in the Student Council shall immediately elect another person of the same sex as the person expelled to fill the vacancy. The

President of the Council shall not excuse a member of the Council from attendance at a regular Council meeting except in cases of extreme urgency. This by-law effective upon passage.

BY-LAW VII

A person shall have been enrolled in this institution for resident work for at least two semesters before he is eligible for the Presidency of the Student Council. This by-law effective upon passage.

BY-LAW VIII

The Student Council of the Kansas State Teachers College of Pittsburg shall hold in reserve twenty per cent (20 per cent) of its net income of money from any source whatsoever during the administration of any Council, said fund to be turned over by the Secretary to the President of the college at the end of each school year and kept in the vaults of the college until the opening of school in September in the following school year, when the fund will be turned over to the President of the Student Council for that year who will see that the money so received is deposited in a savings bank to the credit of the Council, by the Council's treasurer, who will check against the fund for any purpose, when directed so to do by the Student Council in regular session. This by-law is effective upon passage.

BY-LAW X

When for any reason whatsoever the office of President of the Student Council becomes vacant during the school year, the Student Council shall have power to appoint, by a majority vote of the Council's membership, the person who shall succeed to the office which was vacated.

Any person so appointed shall not serve, by reason of such appointment, longer than the duration of the unexpired term which he was elected to fill. This by-law shall be effective on the opening day of school in September, 1924.

BY-LAW XI

In sessions of the Student Council where there is a tie vote when voting on any question which requires a majority only for adoption, the President of the Student Council may cast the deciding vote. Effective April 2, 1924.

BY-LAW XII

Repealed by By-Law XVII.

BY-LAW XIII

No person shall be eligible to hold the office of President of the Student Council, Editor of the Collegio, Business Manager of the Collegio, or any other

college class, unless said person is enrolled in K. S. T. C. with full rank and can comply with all the other provisions of this constitution and by-laws relative to eligibility of candidates. This by-law effective immediately upon adoption.

BY-LAW XIV

No person shall be eligible to vote in college elections or college class elections unless said person is enrolled in K. S. T. C. with full college rank and can comply with all other provisions of this constitution and by-laws relative to the eligibility of voters. This by-law effective immediately upon adoption.

BY-LAW XV

Within two calendar months after the opening day of school in September of each school year the Student Council of K. S. T. C. shall have printed and ready for distribution to members of the student body and the public at large, copies of the Student Council constitution and by-laws printed in pamphlet form. This pamphlet will contain in addition to the Student Council constitution and by-laws, a calendar of all school activities for the current year and any other matter of an informational or advertising nature which the Council may see fit to include. It is particularly desired that this pamphlet be distributed on enrollment days.

BY-LAW XVI

The officers of the Beta Chapter Xi Phi leadership fraternity shall not be awarded points under the existing point system. The Council recognizes the worth of this group as a campus organization and does not wish to interfere with its operation by making its officers subject to the point system. On account of the peculiar make-up of this organization, its members being school leaders and therefore having near the maximum number of points, the Council believes this action necessary.

BY-LAW XVII

Article 1. The Gorillas, men's pep organization of K. S. T. C., shall be given complete charge of the cheer leading staff of the college with power to make such provisions as they see fit in regard to the number, qualifications, means of selection, and tenure of office of said cheer leaders.

Article 2. By-law Number XII of the Student Council is hereby repealed.

Article 3. This by-law shall become effective immediately after its passage by the Student Council.

BY-LAW XVIII

No person shall be eligible to hold the office of Editor of the Collegio unless said person has completed five (5) hours credit in the Journalism courses of the Department of English, and can comply with all other provisions of this Constitution and by-laws relative to eligibility of candidates. This by-law becomes effective upon publication in the Collegio.

BY-LAW XIX

Article 1. Sec. 1. There is hereby created a board of seven members to be known as the Board of Publications which shall exist for the purpose of sponsoring and supervising all student publications other than club, fraternal, and departmental journals.

Sec. 2. Organization of the board: The board shall consist of three faculty members and four students. Faculty members shall be appointed by the President of the college and shall serve as long as they are connected with the college or until their resignation is accepted by the board. Immediately upon passage of this by-law the senior, junior, and sophomore classes of the college shall elect from a list of three nominations made by the now existing Kanza Advisory Board, one student each to serve upon the board. The Student Council shall likewise elect from three nominations made by the now existing board one member from the student body at large.

Sec. 3. Continuity of the board: Vacancies occurring in any one or all of the faculty positions shall be filled by appointment made by the President of the college. Each student member of the Board of Publications shall serve as long as he is continuously enrolled as a fully accredited resident student of the college, or until his resignation is accepted by the board, or until the board, by a vote of five out of seven shall request his resignation. If the fourth student position on the board be vacant the Board of Student Publications shall recommend three candidates from the student body at large from which list the Student Council shall elect one person to fill the vacancy.

Article II. Powers of the Board. The board shall make and enforce policies and rules governing the sponsoring and supervision of the publications over which it has jurisdiction. The board shall by a vote of five of its members have authority to hire the major staff members of the publications over which it has authority, and to fix the salaries of the staff members.

The board shall keep permanent records of the business of the publications from year to year.

The board shall approve major contracts entered into by the staffs of the various publications.

The board shall make its own by-laws, elect its own chairman, and determine its own rules of procedure.

Article III. All previous by-laws or parts of by-laws of the K. S. T. C. of Pittsburg Student Council which are in conflict with this law are hereby repealed.

HOW TO CHANGE ENROLLMENT

Every semester there are a few students who find that they have made some mistake in their enrollments and that it is necessary to make some changes or adjustments. These changes are made through the office of the Dean of the College, but the student must first secure the written consent of the head of the department in which he is majoring. Thus there are two things to do: first, go to the head of your department and talk over your schedule, having him fill out cards with which he is already provided; and second, take these cards to the dean's office and have him make the change.

It is very important that any necessary changes be correctly made for no student can receive credit for a course in which he has not been fully and properly enrolled.

All changes must be made within one week after enrollment.

SCHOOL ELECTIONS

Class officers and members of the Student Council are elected at the general election held the third Thursday after the opening of the fall semester. A primary election is held on the Tuesday before the general election for the purpose of eliminating all but two candidates for each office. Any person wishing to become a candidate for any of the offices to be filled must file a nominating petition bearing the signatures of ten of his classmates with the president of the Student Council on or before the Friday preceding the election. Students must register at places to be provided in order to be eligible to vote.

Dates for the fall election are:

Friday, Sept. 28—Nominating petitions must be filed with president of Student Council.

Tuesday, Oct. 2—Primary election.

Thursday, Oct. 4—General election.

DRAMATICS

Debating and Oratory in K. S. T. C. have assumed the proportions of major sports. Last year 13 students engaged in 27 debates, and 12 entered the preliminary national contest. Eight debaters and two orators were sent to the National Pi Kappa Delta tournament in Ohio.

During the season 1928-29 the debaters will have an opportunity to engage in two provincial debate tournaments—Kansas and Oklahoma—and a number of local single engagements.

Arrangements are being completed to secure the debating team from Sydney, Australia, to appear against a select team from K. S. T. C. some time in December.

The usual oratorical contests and prizes will be available again this year.

Places on the debate squad are secured through competitive tryouts open to every student enrolled in the institution.

Students interested in debating should watch for announcements of the tryout date.

Students representing the institution in debate are eligible to membership in the national forensic fraternity—Pi Kappa Delta.

DRAMATICS

Each year the Arden Players present three plays under the direction of the Department of Speech. Any student in the college may try for a part in these plays. The time and place of the try-outs will be announced in assembly at the proper time.

There is also an evening of one-act plays given by the dramatic art class, and a play given by the senior class.

Participation in any play during a winter term makes a student a member of the Arden Players.

Initiation services are held once a year for all eligible persons wishing to join the National Dramatic Art Fraternity—Theta Alpha Phi.

ALL-SCHOOL PARTIES

All-school parties are held on Friday nights from time to time in the gymnasium. It is planned to hold a party at least once a month.

HOSPITAL FEE

At his first enrollment of each school year, every student pays a hospital fee of one dollar. This fee entitles him to general care and general nursing at Mount Carmel Hospital should the need for it arise at any time while he is enrolled at the college. The fund created from these fees is not intended to cover doctor bills or to pay for special nursing.

POST OFFICE

There is a regular sub-station, known as the College Station, maintained by the Government in Porter Library. The office is open from 8:00 to 11:00 and from 12:30 to 5:30 for any service that may be obtained at any regular first class post office including parcel post, registered and insured mail, etc. Collections from the letter drop are made at 8:00 a. m., 10:15 a. m., 2:00 p. m., and 5:30 p. m.

ABOUT OUR ADVERTISERS

The business men whose ads appear on these pages have made it possible for the Y. M. C. A. to publish this little book and present it to the students. Our advertisers are all up-to-date business men who have proven themselves not only interested in the college but willing to give its activities real substantial backing whenever they can. We urge you to patronize these firms whenever possible.

PORTER LIBRARY REGULATIONS

Library Hours

Monday to Friday—7:30 a. m. to 9:00 p. m.

Saturday—8:00 a. m. to 9:00 p. m.

Library is closed on Thursday from 10:00 to 11:10 for Assembly.

Reference Books

On the shelves in the Main Reading Room are the reference books, such as dictionaries, encyclopedias, yearbooks, etc. Reference books are indicated in the general catalog by the letter "R" These books are not checked out of the library, but must be used in the Main Reading Room. Permission to borrow the book for class use may be obtained at the Reference Desk, and the book must be returned to the Reference Desk at the close of the class period.

Periodicals

The bound periodicals are shelved in the stacks and in the Main Reading Room. They are not to be checked out of the library for home use, but may be borrowed for class use and must be returned at the close of the class period. Current magazines may be drawn out after 8:30 p. m. and are to be returned by 8:10 the next morning. Older unbound issues may be kept for one week only.

Reserved Books

Books for required reading are placed on reserve in the Delivery Room, on the first floor. They are not to be taken from the library during the day without special permission, but may be borrowed for home use after 8:30 p. m., and must be returned by 8:10 the next morning. "Reserve" books in use at 8:30 p. m. must be returned to the Loan Desk and recharged before being taken from the library, otherwise the fine for taking books "without permission" will be imposed. Lists of books placed on reserve are posted on the bulletin board. Students should ask for books by author and title.

Literary Readings

Books for Literary Readings may be drawn out for two weeks. Identification cards are issued to students enrolled in this course, and these cards must be presented each time a book is issued.

High School and Junior High Library

The southeast room on the first floor is for the use of the high school and junior high, and is not to be used by College students for study purposes.

How to Obtain a Book at the Main Loan Desk

In the card catalog find the card which represents the book you wish to use. In the upper left corner of the card will be found the call number of the book. Fill out the Call Slip and give it to the assistant at the Loan Desk, who will bring the book from the stacks. Books not on reserve may be kept for two weeks.

If you do not know how to use the card catalog, or what books will give you the desired information, consult the Reference Librarian in the Main Reading Room. The Reference Librarian is always ready and willing to assist students in finding what they want in the library.

No ink should be used in the library except in fountain pens.

Fines

Five cents per day is charged for two-week books and periodicals kept overtime.

Ten cents for the first hour and one cent for each additional hour is charged for "Reserve" books. Reserve books not returned by 8:20 a. m. are counted one hour overdue. If one day overdue, the fine is 25 cents per day.

A fine of 25 cents is charged for reference books and bound magazines taken without permission.

Books will not be issued to students having fines one month unpaid, without the consent of the librarian.

Extracts From ROOMING REGULATIONS

Closing Hours for Women Students. The hours of closing the houses, from September to April, shall be 10:15 p. m., except Friday and Saturday evenings, when it shall be 11:15 p. m. From April to September, closing hours extend to 10:30 p. m. and 11:30 p. m., respectively.

Women students attending all-school functions which extend over the regular closing hour will be given a reasonable length of time to reach their rooming places.

Women students shall not visit other towns during evenings without advising their housemother as to their intention, and any extension of closing hour is arranged before student leaves her rooming place. Sunday night closing hours are not extended on account of late arrival from overland trip from week-end visit.

Quiet Hours. General quiet hours are observed after 8:00 p. m. At any time during the day boisterousness throughout the halls, or corridors, or calling from one floor to the other, is to be discouraged.

Parlor Privileges. Parlor privileges shall be provided for students at reasonable times. Any features undesirable to either housemother or student should be reported to the Rooms Committee. Under no consideration will women students be permitted to receive gentlemen callers in their rooms or to entertain them later than the "closing hour."

Student Absences Over Night. Women students who are to be absent from their rooming places over night must leave the address with the housemother and have the housemother's approval of all details before they leave the house. This absence should be reported by the housemother the following school day to the office of the Dean of Women.

Change of Rooming Place. Students are not to change rooming places during the semester without notifying the Rooms Committee before such change is made. Women students must secure permission from the Dean of Women before any change is made.

Willful violation of the above rule will be considered sufficient reason for dismissal from College.

Students are required to secure rooms in houses on the approved list, and any violation of this regulation automatically relieves a student of class attendance and he forfeits his grades for the current semester.

STREET DIRECTORY

West of Bdwy.

Pine	1
Walnut	2
Olive	3
College	4
Miles	5
Catalpa	6
Woodland	7
4th St., Circle	8
Chestnut	9
Georgia	10
Warren	11
Smith	12

East of Bdwy.

Locust	1
Elm	2
Joplin	3
Grand	4
Smelter	5
Michigan	6
Stilwell	7
Maple	8
Taylor	9
Lapham	10
Tucker	11
Putnam	12
Rouse	13
Fairview	14
Highland	15
Water	16

South of 1st St.

Rose	1
Euclid	2
Kansas	3
Forest	4
Park	5
Washington	6
Adams	7
Jefferson	8
Webster	9
Monroe	10
Madison	11
Jackson	12
Quincy	13
Morris	14
Carlton	15
Williams	16
Cleveland	17
Harrison	18
Potlitzer	19
Lindburg	20
Ford	21
Springfield	22
Sommers	23
Longfellow	24

North of 1st St.

First to 27th. consecutively.

The campus proper is bounded on the west by Broadway, on the east by Joplin, on the north by Cleveland, and on the south by Lindburg.

JOPLIN & PITTSBURG RAILWAY

(Electric)

Air Line to Joplin

Leaves Seventh and Broadway at 7:15, 8:30, and 9:45 a. m. and every two and one-half hours thereafter until 10:15 p. m.

To Columbus

Leaves Fourth and Broadway at 6:00 a. m. and every hour thereafter until 11:00 p. m. for Columbus, and 11:00 for Scammon.

To Frontenac and State Teachers College

Leaves Fourth and Broadway every thirty minutes until 11:02 p. m.

To Mulberry

Leaves Fourth and Broadway at 5:30 a. m. and every hour thereafter until 10:30 p. m.

To Girard

Leaves Fourth and Broadway at 6:10 a. m. and every hour thereafter until 10:10 p. m.

College and Twentieth Street

Leaves College at 15 minutes and 45 minutes after the hour.

BUS LINES

Headquarters, Stilwell Hotel

Pittsburg to Parsons

Leaves at 1 and 6 p. m.

To Iola

Leaves at 3 p. m.

To Fort Scott

Leaves at 7:20 and 9:30 a. m., 1:30 and 6:30 p. m.
Connect at Fort Scott for Iola, Chanute, Kansas City, and Nevada.

RAILROAD TIME TABLES

FRISCO

South Bound

Train	Depart
No. 183 For Joplin, Monett & St. Louis....	5:05 a. m.
No. 127 For Joplin, Monett & St. Louis....	12:38 p. m.
No. 185 For Joplin, Monett & St. Louis....	10:04 p. m.

North Bound

No. 184 For Girard, Ft. Scott and K. C.....	1:55 a. m.
No. 182 For Girard, Ft. Scott and K. C.....	11:20 a. m.
No. 128 For Girard, Ft. Scott and K. C.....	3:15 p. m.
No. 177 For Cherokee, Parsons and Cherryvale	6:25 a. m.
No. 156 For Minden, Mulberry & Arcadia	8:30 a. m.
No. 178 For Arcadia and Ft. Scott.....	3:45 p. m.

SANTA FE

West Bound

Train	Depart
No. 58 For Girard, Walnut, Erie and Chanute	10:05 a. m.

East Bound

No. 57 For Joplin	3:10 p. m.
-------------------------	------------

MISSOURI PACIFIC

West Bound

Train	Depart
No. 641 For Ft. Scott, Garnett and Topeka	5:30 a. m.
No. 315 For Cherokee, Sherwin, Chetopa and Coffeyville	7:39 a. m.
No. 799 Local freight, carrying passengers for Cherokee, Chetopa and Coffeyville	8:00 a. m.

East Bound

No. 314 For Nevada, Kansas City and St. Louis	7:45 p. m.
--	------------

KANSAS CITY SOUTHERN

North Bound

Train	Depart
No. 4 For Kansas City	3:00 a. m.
No. 2 For Kansas City	11:40 a. m.

South Bound

No. 3 For Joplin, Mena and Port Arthur..	2:35 a. m.
No. 1 For Joplin, Mena and Port Arthur....	7:00 p. m.

MY TIME BUDGET

(How I spend my allowance of 24 hours a day)

	Hours a day	Hours a wk.
Sleep
Meals
Recitations (classroom and lab.).....
Study (preparation for curriculum work)
General reading (current periodicals, fiction, drama, verse, essay, etc., outside of assignments made in connection with curriculum work) and reflective thinking
.....
.....
.....
.....
.....
.....
.....
.....
.....
.....
.....
.....
.....
Extra-curriculum activities (commit- tee work, practice, attendance at meetings, preparation of talks for meetings, etc.)
Employment (to earn money).....
Recreation (including both re-crea- tion and "wreck-reation," fellow- ship with friends, parties, socials, hikes, movies, etc.).....
Private worship (Bible study and prayer for personal spiritual growth)
Other things:
.....
.....
.....
.....
.....
.....
.....
.....
Total	24	168

(Arranged by Harry Bone)

MANUAL YELL

M—A—N—U—A—L
M—M—MAN U—U—UAL
M—A—N—U—A—L MANUAL
YEA TEAM, YEA TEAM, YEA TEAM
FIGHT FIGHT FIGHT

YEA (Opponent), YEA (Opp.), YEA (Opp.)
HOWDY, HOWDY, HOWDY

YEA TEAM, YEA TEAM, YEA TEAM
WE'RE FOR YOU, WE'RE FOR YOU
WE'RE FOR YOU

YEA (Opponent), YEA (Opp.), YEA (Opp.)
FIGHT'EM, FIGHT'EM, FIGHT'EM

FIFTEEN RAHS

RAH, RAH, rah rah rah,
RAH, RAH, rah rah rah,
RAH, RAH, rah rah rah,
TEAM, TEAM, TEAM
WHO, TEAM? WHO, TEAM?
WHO? TEAM, TEAM, TEAM.

Will we beat (opponent's name)? H—— yes!
Cheer leader—What's the matter with the team?
Crowd—They're all right, They are, They are.
They are all right. Team who? Team who?
Team who? Team. Team. Team.

LOCOMOTIVE YELL

Rah, Rah, Rah, Rah.
Fight, Fight, Manual, Fight.
*Rah, Rah, Rah, Rah.
*Fight, Fight, Manual, Fight.
Rah, Rah, Rah, Rah.
Fight, Fight, Manual, Fight.
Rah, Rah, Rah, Rah.
Fight, Fight, Manual, Fight.
Manual Fight, Manual Fight,
Manual Fight, Fight, Fight.

*Getting faster as you go down the rahs and fights.

SCHOOL SONG

THE GOLD AND CRIMSON

On the plains of southern Kansas,
 'Neath an ever cloudless sky,
Far away from surging ocean
 And the storm bird's plaintive cry;
With her prairies rolling westward,
 Where the red men once roamed free;
With her ensign proudly waving,
 Stands our dear K. S. T. C.

Chorus

Let us greet the Gold and Crimson
 With a strong and cordial cheer;
Let our hearts be ever loyal
 To our Alma Mater dear!

Let her worthy sons and daughters
 For our College proudly stand,
Shielding zealously her honor
 In one brave unbroken band;
Let them hold aloft her banner
 With a stout and steady arm,
Rallying her children round it
 From the city, town, and farm.

Phone **999** Phone

MASTER

Cleaners and Tailors

Best Equipped in Southeast Kansas

Walter Elsing, Proprietor

804 North Broadway

Pittsburg, Kansas

DAILY REMINDER

September

September

10

MONDAY

17

Arrived
Unpacked
Entrance exams.

Went for walk
in P.M.

Saw Paul with Ruth & Mild

11

TUESDAY

18

Saw Miss Hodges
7:20 - 11:30
Zelpha & George
Enrollment W. 584 576

Shopped
Went for walk with Florence White
Y. M. C. A. - Y. W. C. A.

12

WEDNESDAY

19

Purchased
att. classes
Lots of "jessies"
Class work begins
Y.M. "Stagg," Y.W. "Jolly Up"

Went to "Jolly Up" with Caroline Livermore - Big Sis to Mrs. Hedrick

13

THURSDAY

20

Took Marguerite Hedrick to Chapel Frosh. Initiation
Saw Paul Savett & Lloyd
First assembly - Carney Hall

Assembly

14

FRIDAY

21

Usual classes
Saw Reedy, Frank, Helen, Brandenburg
Signed up for Y.W. activities

15

SATURDAY

22

Laundered by day and studied in eve took a walk

Football - "Old Grads," here

16

SUNDAY

23

at. I. S. & Church in P.M.
Florence White called in P.M.
met Gertrude Parks.

See Previous
Week DAILY REMINDER

September

October

24 Paged Ruth Wilkes MONDAY 1

for Y. W. on Tues.
 had Ruth
 Forbes & Dick

took
 Marg.

25 went to Christian TUESDAY 2

Church reception
 with Gertrude
 Y. W. Parkes - fine time
 Y. M. C. A. - Y. W. C. A. - good

Y. M. C. A. - Y. W. C. A.

26 Went to Library WEDNESDAY 3

with Imogene
 visited with
 Pauline & Carolyn
 "fortune told"

27 THURSDAY 4

Assembly - good.

Assembly

28 FRIDAY 5

Y. M. - Y. W. Mixer

29 SATURDAY 6

Football, N. E. O. T. C., there

Football - Wichita, here

30 SUNDAY 7

DAILY REMINDER

October

October

8

MONDAY

15

9

TUESDAY

16

Y. M. C. A.—Y. W. C. A.

Y. M. C. A.—Y. W. C. A.

10

WEDNESDAY

17

11

THURSDAY

18

Assembly

Assembly

12

FRIDAY

19

13

SATURDAY

20

Football—Washburn, there

14

SUNDAY

21

DAILY REMINDER

October

October

22

MONDAY

29

23

TUESDAY

30

Y. M. C. A.—Y. W. C. A.

Y. M. C. A.—Y. W. C. A.

24

WEDNESDAY

31

25

THURSDAY

November 1

Assembly

Assembly

26

FRIDAY

2

27

SATURDAY

3

Football—C. of E., here

28

SUNDAY

4

DAILY REMINDER

November

November

5

MONDAY

12

Mid-semester term opens

6

TUESDAY

13

Y. M. C. A.—Y. W. C. A.

Y. M. C. A.—Y. W. C. A.

7

WEDNESDAY

14

8

THURSDAY

15

Assembly

Assembly

9

FRIDAY

16

10

SATURDAY

17

Football—Emp. Tchrs., here

11

SUNDAY

18

DAILY REMINDER

November

November

19

MONDAY

26

20

TUESDAY

27

Y. M. C. A.—Y. W. C. A.

Y. M. C. A.—Y. W. C. A.

21

WEDNESDAY

28

Assembly
Thanksgiving dismissal

22

THURSDAY

29

Assembly

Football—Southwestern, there

23

FRIDAY

30

Football—Hays Tchrs., here

24

SATURDAY

December 1

25

SUNDAY

2

DAILY REMINDER

December

December

17

MONDAY

24

18

TUESDAY

25

Y. M. C. A.—Y. W. C. A.

Christmas

19

WEDNESDAY

26

20

THURSDAY

27

Assembly

21

FRIDAY

28

Dismissal for Christmas

22

SATURDAY

29

23

SUNDAY

30

DAILY REMINDER

December

December

17

MONDAY

24

18

TUESDAY

25

Y. M. C. A.—Y. W. C. A.

Christmas

19

WEDNESDAY

26

20

THURSDAY

27

Assembly

21

FRIDAY

28

Dismissal for Christmas

22

SATURDAY

29

23

SUNDAY

30

DAILY REMINDER

Dec., '28, Jan., '29

January

31 MONDAY 7

1 January TUESDAY 8

New Year's Day

Y. M. C. A.—Y. W. C. A.

2 WEDNESDAY 9

Resumption of work

3 THURSDAY 10

Assembly

Assembly

4 FRIDAY 11

5 SATURDAY 12

6 SUNDAY 13

DAILY REMINDER

January

January

14 MONDAY 21

Enrollment

15 TUESDAY 22

Y. M. C. A.—Y. W. C. A.

Class work begins
Y. M. C. A.—Y. W. C. A.

16 WEDNESDAY 23

17 THURSDAY 24

Assembly

Assembly

18 FRIDAY 25

End first semester

19 SATURDAY 26

20 SUNDAY 27

WINTER CLASS SCHEDULE

Hour	Subject	Ct. No.	Hr. Ct.	Room	Professor
.....
.....
.....
.....
.....
.....
.....
.....

10:10 Tuesday—Y. M., Y. W.

10:10 Thursday—Assembly

DAILY REMINDER

January

February

28

MONDAY

4

29

TUESDAY

5

Y. M. C. A.—Y. W. C. A.

Y. M. C. A.—Y. W. C. A.

30

WEDNESDAY

6

31

THURSDAY

7

Assembly

Assembly

1 February

FRIDAY

8

2

SATURDAY

9

3

SUNDAY

10

DAILY REMINDER

February

February

11

MONDAY

18

12

TUESDAY

19

Y. M. C. A.—Y. W. C. A.

Y. M. C. A.—Y. W. C. A.

13

WEDNESDAY

20

14

THURSDAY

21

Assembly

Assembly

15

FRIDAY

22

16

SATURDAY

23

17

SUNDAY

24

DAILY REMINDER

February

March

25 MONDAY 4

26 TUESDAY 5

Y. M. C. A.—Y. W. C. A.

Y. M. C. A.—Y. W. C. A.

27 WEDNESDAY 6

28 THURSDAY 7

Assembly

Assembly

1 March FRIDAY 8

Commemoration Day

2 SATURDAY 9

3 SUNDAY 10

DAILY REMINDER

March

March

11

MONDAY

18

12

TUESDAY

19

Y. M. C. A.—Y. W. C. A.

Y. M. C. A.—Y. W. C. A.

13

WEDNESDAY

20

14

THURSDAY

21

Assembly

Assembly

15

FRIDAY

22

16

SATURDAY

23

17

SUNDAY

24

DAILY REMINDER

March

April

25	MONDAY	1
Mid-semester term opens		
26	TUESDAY	2
Y. M. C. A.—Y. W. C. A.		Resumption of classes Y. M. C. A.—Y. W. C. A.
27	WEDNESDAY	3
28	THURSDAY	4
Easter dismissal. Assembly		Assembly
29	FRIDAY	5
30	SATURDAY	6
31	SUNDAY	7

DAILY REMINDER

April

April

8

MONDAY

15

9

TUESDAY

16

Y. M. C. A.—Y. W. C. A.

Y. M. C. A.—Y. W. C. A.

10

WEDNESDAY

17

11

THURSDAY

18

Assembly

Assembly

12

FRIDAY

19

13

SATURDAY

20

14

SUNDAY

21

DAILY REMINDER

April		April
22	MONDAY	29
<hr/>		
Music Festival		
23	TUESDAY	30
<hr/>		
Music Festival Y. M. C. A.—Y. W. C. A.		Y. M. C. A.—Y. W. C. A.
24	WEDNESDAY	May 1
<hr/>		
Music Festival		
25	THURSDAY	2
<hr/>		
Music Festival Assembly		Assembly
26	FRIDAY	3
<hr/>		
Music Festival		
27	SATURDAY	4
<hr/>		
28	SUNDAY	5
<hr/>		

DAILY REMINDER

May

May

6

MONDAY

13

7

TUESDAY

14

Y. M. C. A.—Y. W. C. A.

Y. M. C. A.—Y. W. C. A.

8

WEDNESDAY

15

9

THURSDAY

16

Assembly

Assembly

10

FRIDAY

17

11

SATURDAY

18

12

SUNDAY

19

Baccalaureate sermon

DAILY REMINDER

May

May

20

MONDAY

27

Enroll summer term

21

TUESDAY

28

22

WEDNESDAY

29

23

THURSDAY

30

Commencement

24

FRIDAY

31

25

SATURDAY

June 1

26

SUNDAY

2

Little Sisters

NOTES

Ruth Wilkins
104 W. Monroe

Marguerite Hedrick
120 25. Bdwy

Laudine Doherty
113 E. Cleveland

Emogene Jarvis
103 E. Cleveland

Couja Hist of Eng Lit. NOTES

Enrollment $\$$ 22.50
Room Rent. 18.50

Books.	$\$$ 41.00
$\$$ 1.25	10.25
1.25	$\$$ 51.25
2.25	
1.10	
3.00	
1.40	
$\$$ 10.25	

NOTES

$$\begin{array}{r} 42 \text{ hrs.} \\ \underline{5} \\ 40 \\ \underline{18} \\ 22 \end{array}$$

$$\begin{array}{r} 34 \text{ ss. Col.} \\ \underline{5} \\ 29 \\ \underline{7} \\ 22 \end{array}$$

$$\begin{array}{r} 22 \\ \underline{16} \\ 6 \end{array}$$

NOTES

Paul Wilberine, Lth
 8¹⁰ Mathews Institute M. W. F.
 10¹⁰ Corner, Eng. M. W. F.
 11¹² Gruber, to Ed. T. T.
 1¹⁰ Right Singing. M. W. F. T. H.
 2¹⁰ Phyp. Ed.

NOTES

NOTES

NOTES

NOTES

SERVICE PROGRAM

The Y. M. C. A. provides opportunities for an active part in the general Christian program on the campus through the work of its standing committees. Names of committees and brief descriptions follow:

Membership—Enlists new members and promotes fellowship.

Finance—Secures pledges for support of "Y" work.

Publicity—Prepares news stories of plans and accomplishments.

Discussion Groups—Promotes group discussion on timely topics.

Church Relations—Relates men to church of their choice.

Student Assistance—Provides employment and rooms.

Social—Arranges social gatherings.

Publications—Publishes Handbook and Student Directory.

Friendly Relations—Helps foreign students make friendly contacts.

Freshman Work—Helps freshmen to get acquainted and adjusted.

Vocational Guidance—Secures interviews and information.

World Education—Stimulates interest in world problems.

Boys' Work—Furnishes leadership for boys' clubs.

Gospel Teams—Sends religious workers to surrounding communities.

Intercollegiate Relations—Establishes intercollegiate contacts.

FURTHER INFORMATION

Additional information concerning the Y. M. C. A. may be found on page 17. Questions will be answered gladly by any of the officers, cabinet men, or secretary.

Y. M. C. A. MEMBERSHIP APPLICATION

I declare myself to be in sympathy with Association's statement of purpose as found on page 17 of "K" Book, and willing to make it my personal program of allegiance and service. If my application is approved, I promise to give, as I am able, of my time and money in seeking the full realization of the Association's objective.

Signed

Date

College address

Home address

Church member?—Yes..... No..... Denomination.....

Classification..... Phone.....

Committees with which I should like to work:
(See back of application)

.....

.....

Detach, fill out and give to 'Y' Secretary.

**FASHION'S
FRESHEST
FANCIES IN
FOOTWEAR**

Hosiery, Too

FASHION
SHOE CO.

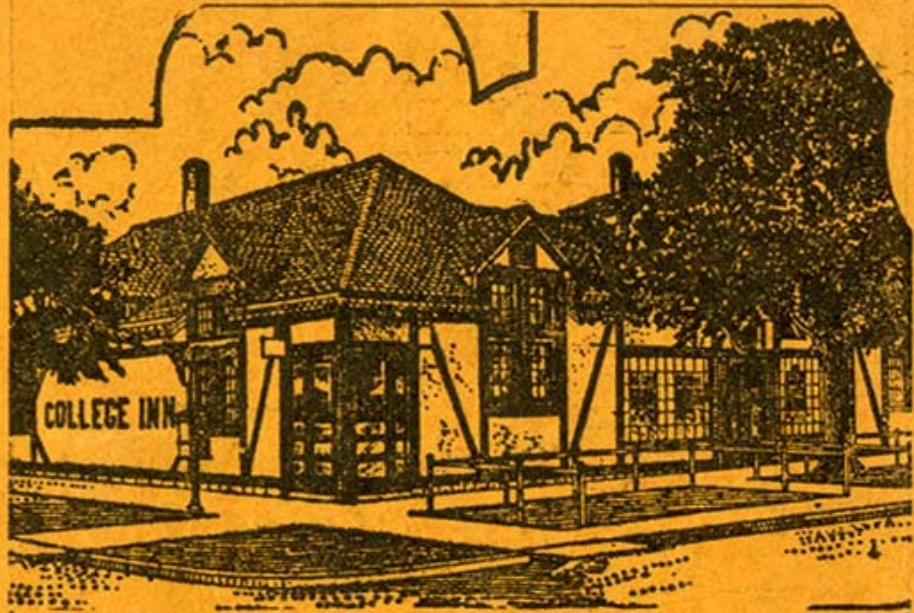
511 N. Broadway

WALTER S. HALE
JEWELER

503 North Broadway

Attractive values in Jewelry.
You will like to trade in his
store. Try him.

He wants your trade.



RED SEAL LUNCH ROOM



DRUGS SODA LUNCH
BOOKS

COLLEGE INN

201 East Cleveland