

Pittsburg State University

Pittsburg State University Digital Commons

Faculty Submissions

Library Services

4-22-2016

Evolving Roles of Librarians: Juggling Print and Electronic Collections While Making Meaningful Connections

Jorge Leon

Pittsburg State University, jleon@pittstate.edu

Barbara M. Pope

Pittsburg State University, bpope@pittstate.edu

Follow this and additional works at: https://digitalcommons.pittstate.edu/axe_faculty



Part of the [Collection Development and Management Commons](#)

Recommended Citation

Leon, Jorge and Pope, Barbara M., "Evolving Roles of Librarians: Juggling Print and Electronic Collections While Making Meaningful Connections" (2016). *Faculty Submissions*. 2.

https://digitalcommons.pittstate.edu/axe_faculty/2

This Article is brought to you for free and open access by the Library Services at Pittsburg State University Digital Commons. It has been accepted for inclusion in Faculty Submissions by an authorized administrator of Pittsburg State University Digital Commons. For more information, please contact digitalcommons@pittstate.edu.

EVOLVING ROLES OF LIBRARIANS:

**Juggling Print and Electronic Collections While Making
Meaningful Connections**

**By Jorge Leon and Barbara M. Pope,
Leonard H. Axe Library
Pittsburg State University
CULS Conference 2016, Manhattan KS**

TRADITIONAL ROLES OF LIBRARIANS

- ▶ Information Literacy / Instruction
- ▶ Collection Development
- ▶ Creating Access to Materials in Print and Electronic Formats
- ▶ Research Aids and Providing Reference Assistance
- ▶ Archival and Preservation Tasks



Leonard H. Axe Library years ago...with orange walls

NEW AND EVOLVING LIBRARY ROLES IN THE 21ST CENTURY

- ▶ **Information and Metadata Literacy**
 - ▶ **Open Access and Open Education Resources Literacy**
 - ▶ **Outreach Librarian and Library Commons Coordinator**
 - ▶ **Assessment and User-Study Coordinators**
 - ▶ **Technology and Digital Resource Librarianship**
- 

CHALLENGES DURING THE 21ST CENTURY

- ▶ Desire to add new services and resources
- ▶ Lack of space
- ▶ Flat or declining budgets
- ▶ Too many roles and responsibilities
- ▶ Disconnect between users and print / electronic resources
- ▶ Changes in checkout pattern



A LITTLE ABOUT PITT STATE

Brief University Data

- Undergraduate and Graduate Programs
- Many Online Only Classes – 140+
- Number of Majors – 150+
- Student to Faculty Ratio – 19:1
- Number of Students – 7,400
- FTE – 6,771



A Snap-Shot of our students



Studying during
late night
extended hours

Recurring student art display



Study group
during Finals
Fall 2015



CHALLENGES AT LEONARD H. AXE LIBRARY

- ▶ **Collection Development Policies and Procedures Were Out of Date**
 - ▶ **Multi-year Renovation and Remodel Plan**
 - ▶ **Reorganization of Positions**
 - ▶ **New Dean of Library Services**
 - ▶ **Learning Outreach Librarian**
 - ▶ **Digital Initiatives Librarian**
- 

MAIN GOALS WE SET OURSELVES

Develop new and innovative ways to make meaningful connections with users

Capitalize on users' expertise to create content and help us connect back to collections

Decorative white lines consisting of several parallel diagonal strokes in the bottom right corner of the slide.

BRIDGING OUTREACH AND COLLECTIONS

- ▶ Give users more *Ownership* over the space
- ▶ Create partnerships where users feel empowered to *Create Content* in the library
- ▶ Promote user events & programs that encourage *using library resources*

GIVING USERS OWNERSHIP OF SPACE

- ▶ **Murals & Partnership With Faculty**
 - ▶ **Student Displays of Art Objects, Photographs**
 - ▶ **Library Renovation Involvement & User Studies**
 - ▶ **Mediated Reservation of Group Work Spaces**
 - ▶ **Sororities and Fraternities - “Letters In The Library”**
- 
- A decorative graphic consisting of several parallel white lines of varying lengths, slanted diagonally from the bottom right towards the top right, located in the lower right quadrant of the slide.



**GIVING USERS OWNERSHIP
OF SPACE**



**GIVING USERS OWNERSHIP
OF SPACE**

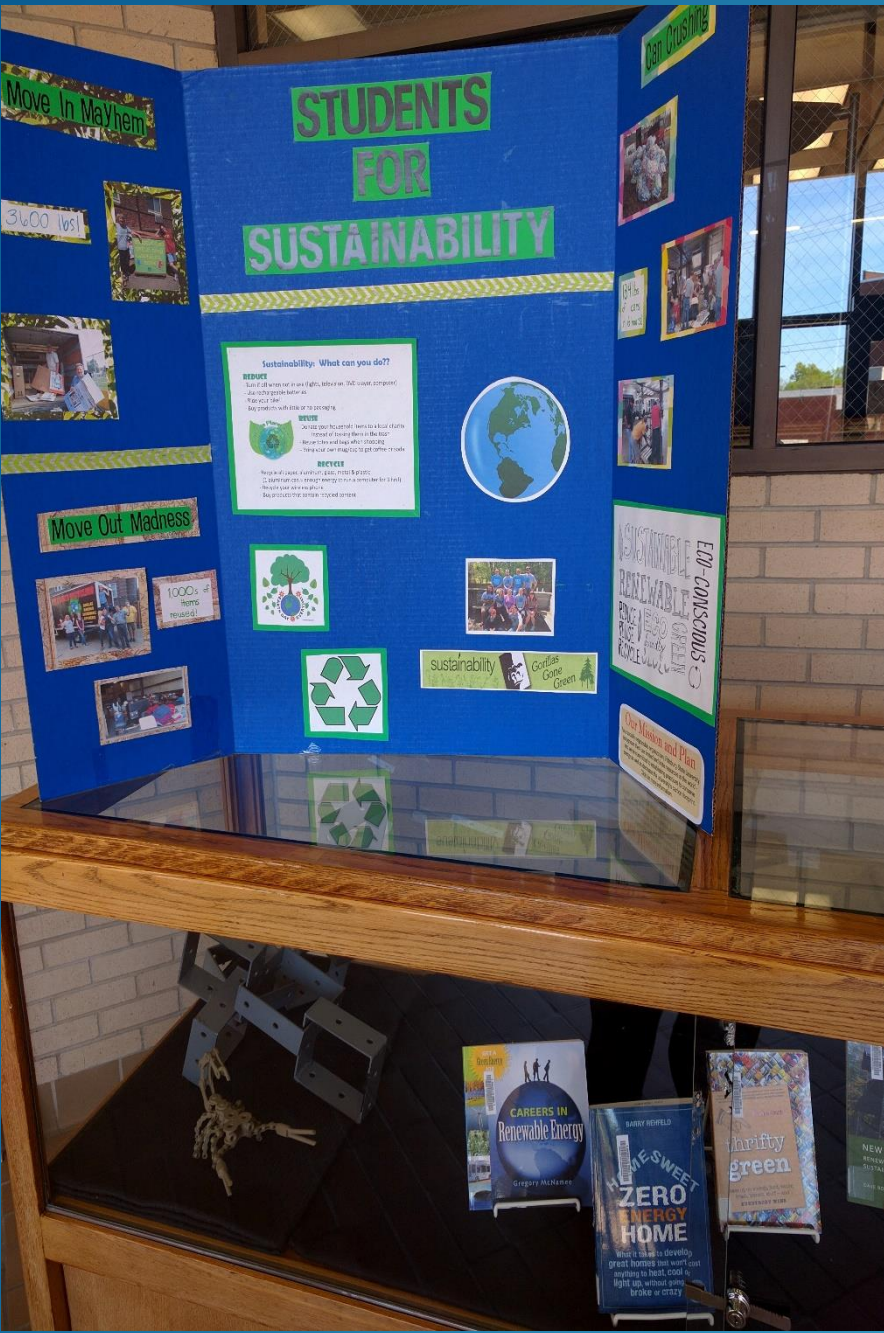
PARTNERSHIPS WHERE USERS CREATE CONTENT IN THE LIBRARY

Reasons for student groups to use library space:

- ▶ Discuss social issues and concerns
- ▶ Promote their projects
- ▶ Recruit for their organizations

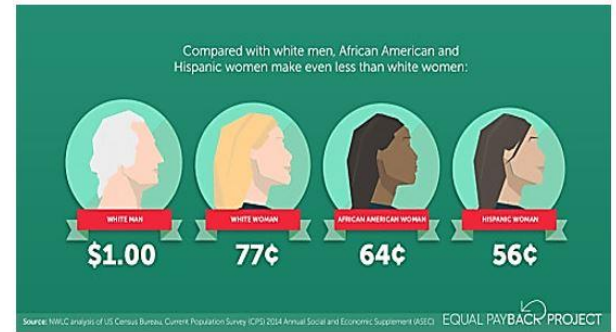
Examples:

- ▶ Students 4 Sustainability
- ▶ Food drives & canned art
- ▶ Equal Pay 2016 Event
- ▶ Banned & Challenged books conversations



USERS CREATING CONTENT IN THE LIBRARY

EQUAL PAY DAY 2016



FEATURING INSIGHTS FROM LOCAL ENTREPRENEURS & HIRING MANAGERS

Sponsored by the Student Alliance for Gender Equity, the Office of Student Diversity and Axe Library.



USERS CREATING CONTENT IN THE LIBRARY



BANNED & CHALLENGED BOOKS

Join the discussion on historically controversial books! All are welcome to share an excerpt from a favorite banned or challenged book!

TUESDAY SEPT 22ND 1-2PM: Diversity & Multiculturalism


WEDNESDAY SEPT 23RD 4-5PM: Open-subject

THURSDAY SEPT 24TH 2-3PM: Young Adult & Graphic Novels

All events held in Axe Library Room 115
Light refreshments provided.



PROMOTE USER EVENTS / PROGRAMS THAT ENCOURAGE USE OF RESOURCES

- ▶ **Faculty Liaisons**
 - ▶ **Course LibGuides**
 - ▶ **Partnerships With Faculty & Academic Departments**
 - **Banned Books**
 - **Mural Project**
 - ▶ **Video Project**
 - ▶ **Luau**
 - ▶ **Table Tents**
 - ▶ **Extended Hours During Finals and Midterms**
- 

PROMOTE USER EVENTS / PROGRAMS THAT ENCOURAGE USE OF RESOURCES

- ▶ **Library Liaisons**
- ▶ **Subject LibGuides**
- ▶ **Course LibGuides**
- ▶ **Library Instruction**

Pittsburg State University Library Services / LibGuides / NURS 850 Curriculum Development (Hite) / Home

NURS 850 Curriculum Development (Hite): Home

Module 2

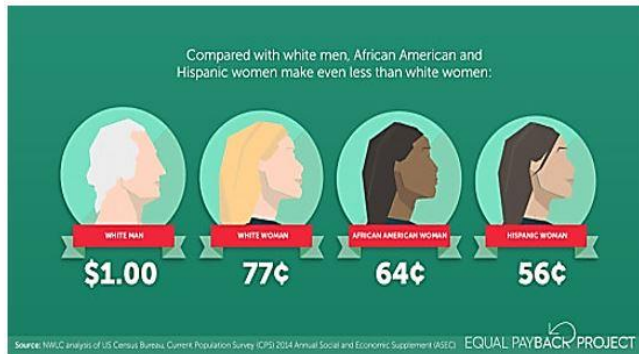
- [Nursing faculty preparedness for clinical teaching.](#)
Suplee, P. D., Gardner, M., & Jerome-D'Emilia, B. (2014). Nursing faculty preparedness for clinical teaching. *The Journal of Nursing Education*, 53(3), S38.
- [Nursing faculty: A vulnerable population.](#)
DalPezzo, N. K., & Jett, K. T. (2010). Nursing faculty: A vulnerable population. *The Journal of Nursing Education*, 49(3), 132-137.
- [What's the ROI for resolving the nursing faculty shortage?](#)
Kowalski, K., & Kelley, B. M. (2013). What's the ROI for resolving the nursing faculty shortage? *Nursing Economics*, 31(2), 70-75.
- [Creating a healthy work environment for nursing faculty.](#)
Kuehn, M. B. (2010). Creating a healthy work environment for nursing faculty. *Creative Nursing*, 16(4), 193-197.

Module 3

- [Fostering Significant Learning in Graduate Nursing Education](#)
Fostering Significant Learning in Graduate Nursing Education. by Geraldine F Marrocco. *Journal of Nursing Education*, 03/2014, Volume 53, Issue 3.

PROMOTE USER EVENTS / PROGRAMS THAT ENCOURAGE USE OF RESOURCES

EQUAL PAY DAY 2016



FEATURING INSIGHTS FROM LOCAL ENTREPRENEURS
& HIRING MANAGERS

Sponsored by the Student Alliance for Gender Equity, the Office of Student Diversity and Axe Library.



GAB student partners during extended hours programming

LESSONS WE LEARNED

- ▶ **Change the way you engage users. Different strategies for different groups.**
- ▶ **Don't Be Afraid to Experiment**
- ▶ **It will be a constant challenge to continuously create new relationships - But the product of user created content is worth the effort**
- ▶ **Departments on campus will find out and approach you about new opportunities**

FURTHER READINGS

Snavely, Loanne. Student Engagement and the Academic Library. Santa Barbara, Calif.: ABC-CLIO, 2012.

Cawthorne, Jon E. “Integrating outreach and building partnerships: Expanding our role in the learning community.” College & Research Libraries News. Nov. 2003. 64 (10): 666-681.

▶ **Barbara M. Pope, MALS**
Periodicals/Reference Librarian
620-235-4884
bpope@pittstate.edu

▶ **Jorge Leon**
Learning Outreach Librarian
620-235-4892
jleon@pittstate.edu

CONTACT INFORMATION

PDF of handout available at this link
<http://libguides.pittstate.edu/pope/home>